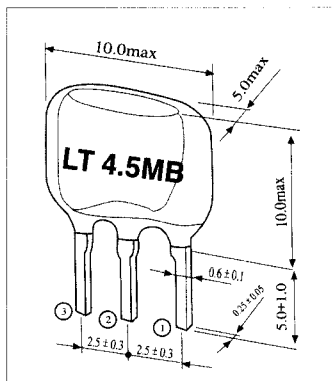


CERAMIC FILTER



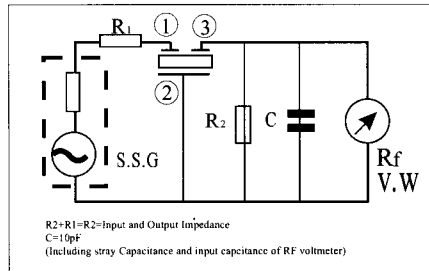
DIMENSIONS (mm) 外形尺寸

- ① Input
- ② Ground
- ③ Output

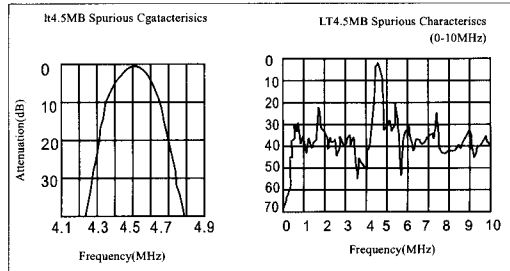
Technical Characteristics 技术特性

Part Number	3dB Band Width(KHz)	20dB Band Width(KHz)	Insertion Loss(dB)	Spurious Rejection(dB)	Input-Output Impedance(Ω)
LT4.5MB	$\geq \pm 60(\pm 105)$	$\leq 530(420)$	$\leq 6(4)$	$\geq 20(4.5^{+0.8}_{-1.0} \text{ MHz})$	1000
LT5.5MB	$\geq \pm 75(\pm 120)$	$\leq 550(470)$	$\leq 6(3)$	$\geq 25(5.5 \pm 1.0 \text{ MHz})$	600
LT6.0MB	$\geq \pm 80(\pm 130)$	$\leq 600(500)$	$\leq 6(2.5)$	$\geq 25(6.0 \pm 1.0 \text{ MHz})$	470
LT6.5MB	$\geq \pm 90(\pm 130)$	$\leq 630(530)$	$\leq 6(2.5)$	$\geq 25(6.5 \pm 1.0 \text{ MHz})$	470

TEST CIRCUIT 测试电路



CHARACTERISTICS 特性曲线

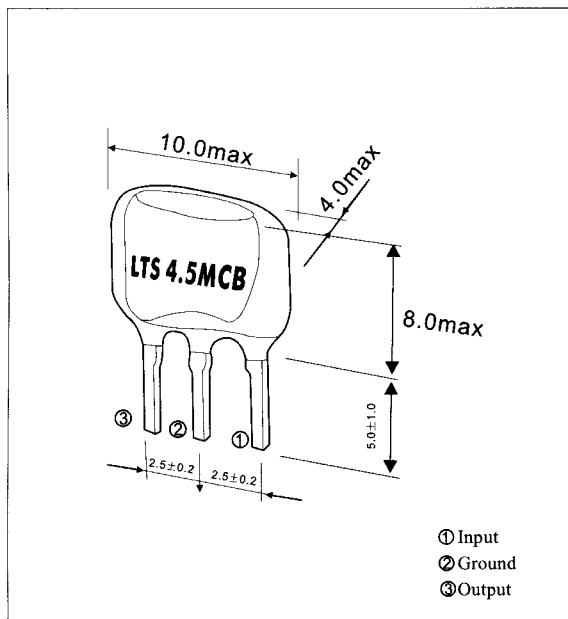


LT4.5MB TWYCR Stage

Technical Characteristics 技术特性

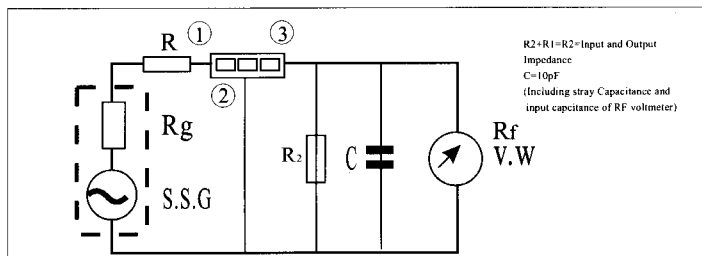
Part Number	3dB Band Width(KHz)	20dB Band Width(KHz)	Insertion Loss(dB)	Spurious Rejection(dB)	Input-Output Impedance(Ω)
LTS4.5MCB	$\pm 60(\pm 110)$	600(470)	6(3.2)	30(0~4.5MHz)	1000
LTS5.5MCB	$\pm 60(\pm 115)$	600(500)	6(3.6)	30(0~5.5MHz)	600
LTS6.5MCB	$\pm 60(\pm 115)$	600(500)	6(4.0)	30(0~6.0MHz)	470
LTS6.5MCB	$\pm 70(\pm 115)$	650(530)	6(3.6)	30(0~6.5MHz)	470
LTSH4.5MDB	$\geq \pm 70$	≤ 750	≤ 6	≥ 30	—
LTSH5.5MDB	$\geq \pm 80$	≤ 750	≤ 6	≥ 30	—
LTSH6.0MDB	$\geq \pm 80$	≤ 750	≤ 6	≥ 30	—
LTSH6.5MDB	$\geq \pm 80$	≤ 800	≤ 6	≥ 30	—

DIMENSION(mm) 外形尺寸

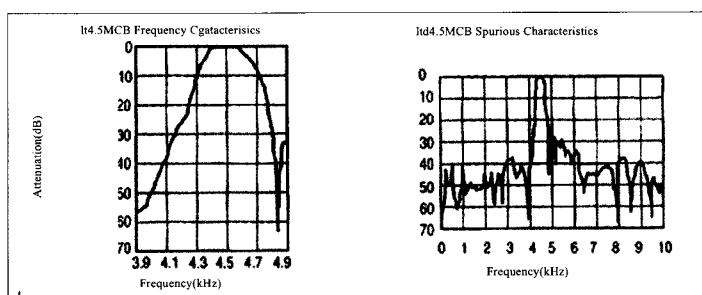


- ① Input
- ② Ground
- ③ Output

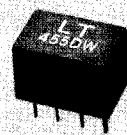
TEST CIRCUIT 测试电路



CHARACTERISTICS 特性曲线



CERAMIC FILTER



LT455(450)...W Series

LT455(450)...W 系列通讯机用陶瓷滤波器

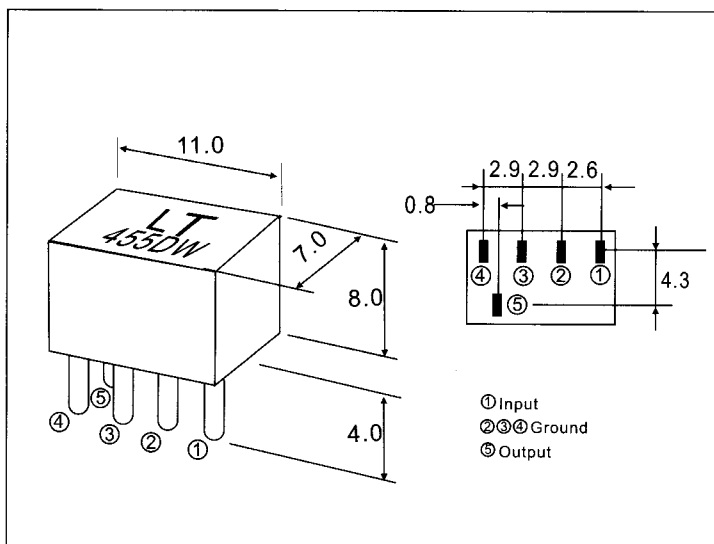
Technical Characteristics(455KHz Series) 技术特性

Part Number 型号	Center frequency (KHz) 中心频率	Insertion Loss (dB)max 插入损耗	Pass Band Ripple (dB)max 通带波动	6dB Bandwidth (KHz)min 6dB带宽	50dB Bandwidth (KHz)max 50dB带宽	Stop Band Att. ±100KHz (dB)min 阻带衰减	Input/output Impedance (Ω) 输入/输出阻抗
LT455BW	455±2.0	4	2	±15	±30	40	1500
LT455CW	455±2.0	4	2	±12.5	±24	40	1500
LT455DW	455±1.5	4	2	±10	±20	40	1500
LT455EW	455±1.5	6	2	±7.5	±15	40	1500
LT455FW	455±1.5	6	2	±6	±12.5	40	2000
LT455GW	455±1.5	6	2	±4.5	±10	40	2000
LT455HW	455±1.0	6	2	±3	±9	40	2000
LT455IW	455±1.0	6	2 </td <td>±2</td> <td>±7.5</td> <td>40</td> <td>2000</td>	±2	±7.5	40	2000
LT455HTW	455±1.0	6	2	±3	±9	60	2000

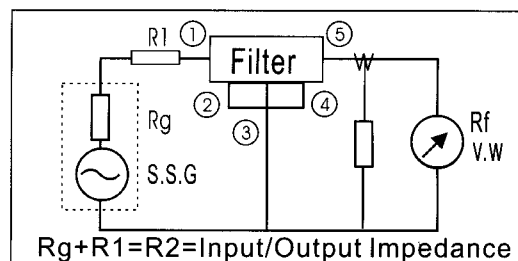
Technical Characteristics(450KHz Series) 技术特性

Part Number 型号	Center frequency (KHz) 中心频率	Insertion Loss (dB)max 插入损耗	Pass Band Ripple (dB)max 通带波动	6dB Bandwidth (KHz)min 6dB带宽	50dB Bandwidth (KHz)max 50dB带宽	Stop Band Att. ±100KHz (dB)min 阻带衰减	Input/output Impedance (Ω) 输入/输出阻抗
LT450BW	450±2.0	4	2	±15	±30	40	1500
LT450CW	450±2.0	4	2	±12.5	±24	40	1500
LT450DW	450±1.5	4	2	±10	±20	40	1500
LT450EW	450±1.5	6	2	±7.5	±15	40	1500
LT450FW	450±1.5	6	2	±6	±12.5	40	2000
LT450GW	450±1.5	6	2	±4.5	±10	40	2000
LT450HW	450±1.0	6	2	±3	±9	40	2000
LT450IW	450±1.0	6	2	±2	±7.5	40	2000
LT450HTW	450±1.0	6	2	±3	±9	60	2000

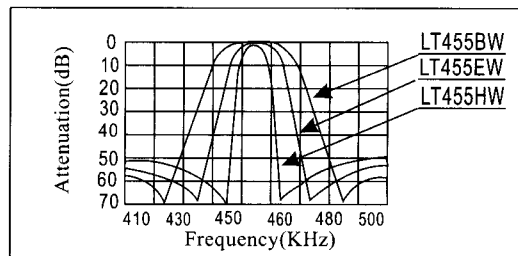
DIMENSIONS(mm) 外形尺寸



TEST CIRCUIT 测试电路



CHARACTERISTICS 特性曲线



CERAMIC DISCRIMINATOR



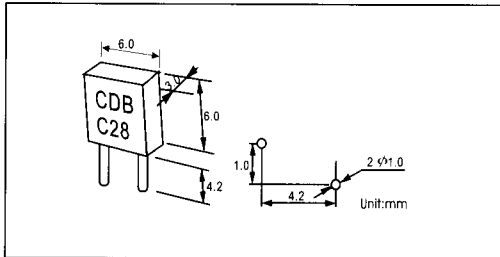
CDB455 Series for Telecommunication 通讯用 CDB455 系列

Part Number 型号	Demodulation Output 解调输出 (mV)	Distortion Factor 畸变因素 (%)	Impedance Chan. 阻抗通道		Resonant Resistance R ₁ 谐振电阻 (Ω)	Capacitance 电容 (pF)		
			Antenna 天线 (Ω)	Antenna 天线 (KHz)				
CDB455C3				455±1.5KHz	48±5KHz	70max	600pF±20%	
CDB455C4				470±1.0KHz	43±2.0KHz	300max	140 F±20%	
CDB455C7	±4.0KHz min	340±60mV	2.0%max					
CDB455C9	±5.0KHz min	100mV	1.5max					
CDB455C10				429±2.0KHz		46KHz	70max	580pF±20%
CDB455C16	±4.0KHz min	190±50mV	2.0max					
CDB455C18	±3KHz min	180±40mV	2.0max					
CDB455C28	±4.0KHz min	40±20mV	3.0max					
CDB455C29	±4.0KHz min	125±30mV	2.5max					
CDB455C32	±4.0KHz min	40±20mV	3.0max					
CDB455C34	±4.0KHz min	65±20mV	2.5max					

JT10.7 Series for FM 调频用 JT10.7 系列

Part Number 型号	Demodulation Output at f ₀ (% max) 解调输出	Distortion Factor at f ₀ (% max) 畸变因素	Demodulation 3dB Band width(KHz)(min) 解调3dB带宽	Applicable IC 应用的 IC
JT10.7MG1	25	1.0	345	CX-2009,CX-200111
JT10.7MG3	650	1.0	±150	TA730P,TA7130 μPC1028H,LA1150
JT10.7MG16	60-90	0.9	300	TA8122AN
JT10.7MG18	60-90	0.9	300	TA8132N
JT10.7MG33	45	0.7	250	TA2007
JT10.7MG80	65	1.0	300	TA2104AFN
JT10.7MG82	90	0.8	320	TA2099N
JT10.7MG92	60	1.0	300	TA2132P
JT10.7MC1	35	1.0	242	CXA1019M,CX-20091

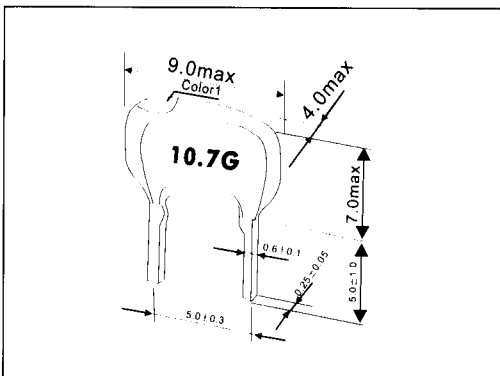
DIMENSION 外形尺寸



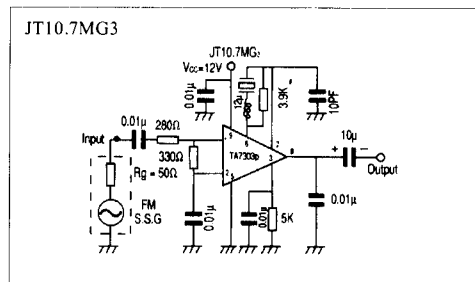
STANDARD RULE 标准模式

Center Frequency 中心频率	D 10.64MHz ±30(KHz)	B 10.67MHz ±30(KHz)	A 10.70MHz ±30(KHz)	C 10.73MHz ±30(KHz)	E 10.76MHz ±30(KHz)
Color 颜色	Black 黑	Blue 蓝	Red 红	Orange 橙	White 白

DIMENSION 外形尺寸



TEST CIRCUIT 测试电路



CERAMIC RESONATOR

ZTH
456F

ZTH 456/503F Series Ceramic Resonators

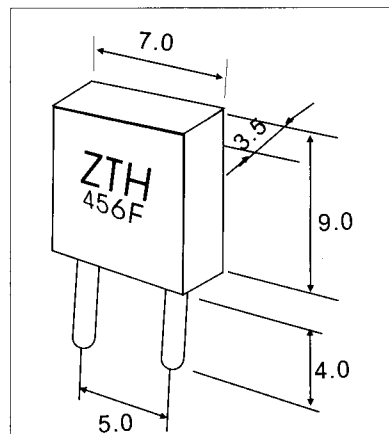
ZTH456/503F系列陶瓷谐振器

ZTH 456F Series for FM Multiplexers 调频立体声用ZTH456F系列陶瓷谐振器

Technical Characteristics 技术特性

Part Number 型号	Frequency Accuracy 频率精度	Applicable IC 适用的IC
ZTH456F14	19.000KHz±38Hz	TA7413AP(TOSHIBA)
ZTH456F15	19.000KHz±38Hz	LA3430(SANYO)
ZTH456F16	19.000KHz±38Hz	TA8122AN(TOSHIBA)
ZTH456F18	19.000KHz±38Hz	TA8132N(TOSHIBA)
ZTH912JF101	918.50KHz±0.3%	TN7291(MATSUSHITA)

DIMENSIONS(mm) 外形尺寸



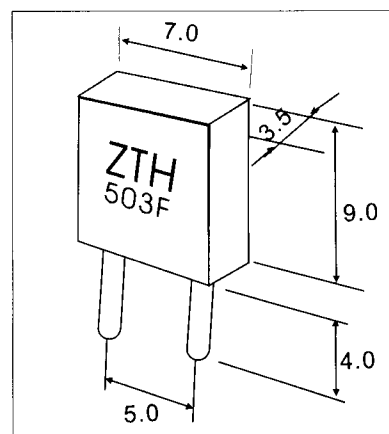
ZTH 530F Series for TV Horizontal Synthesizer Circuits

电视机行信号合成电路用ZTH503F系列压控陶瓷谐振器

Technical Characteristics 技术特性

Part Number 型号	Frequency Accuracy 频率精度	Applicable IC 适用的IC
ZTH503F2	503.5 ± 2KHz	upC1410(NEC)
ZTH503F5	504.5 ± 2KHz	LA7620(SANYO)
ZTH503F6	519 ± 2KHz	M51307(MITSUBISHI)
ZTH503F10	15.734KHz ± 0.5%	TA7777(TOSHIBA)
ZTH503F12	503.5 ± 2KHz	TDA3586(THOMSON)
ZTH503F15	505.1 ± 2KHz	LA7650(SANYO)
ZTH503F30	503.5 ± 1.5KHz	TA8654(TOSHIBA)
ZTH503F38	15.734KHz ± 62KHz	AN5320(MATSUSHITA)
ZTH500F2	500.0 ± 2KHz	μpC1401(NEC)
ZTH500F9	500.0 ± 2KHz	M51308SP(MITSUBISHI)
ZTH500F13	500.0 ± 2KHz	M51367SP(MITSUBISHI)
ZTH500F28	15.68KHz ± 0.4%	LA7680(SANYO)
ZTH500F40	15.68KHz ± 0.4%	LA8691N(TOSHIBA)
ZTH500F55	15.68KHz ± 0.4%	LA7685(SANYO)

DIMENSIONS(mm) 外形尺寸



SHOULDER ELECTRONICS LIMITED

工厂:

江苏省无锡市好达电子有限公司
电话: 86-510-5125288 5115441
传真: 86-510-5125088
地址: 江苏省无锡市蠡溪路258号
邮编: 214072

销售及市场部:

深圳市成月电子有限公司
电话: 86-755- 2979884
传真: 86-755- 2979885
地址: 深圳市福田区车公庙天安数
码城天祥大厦C2单元1楼
邮编: 518040

<http://www.china-shoulder.com>
Email: sdeco@asiansources.com

Factory:

Shoulder Electronics Limited
Tel: 86-510-5125288 5115441
Fax: 86-510-5125088
Add: 258 Lixi Road, Wuxi, Jiangsu, China. 214072

International Sales & Marketing Office:

Shoulder Electronics Limited
Tel: 86-755- 2979884
Fax: 86-755- 2979885
Add: 1/F., C2., Tian Xiang Bldg, Tian An
Cyberpark, Che Gong Miao, Fu Tian
Dist, Shenzhen, 518040, China.

