

M3DS Simply ROM Trim Tool Instruction

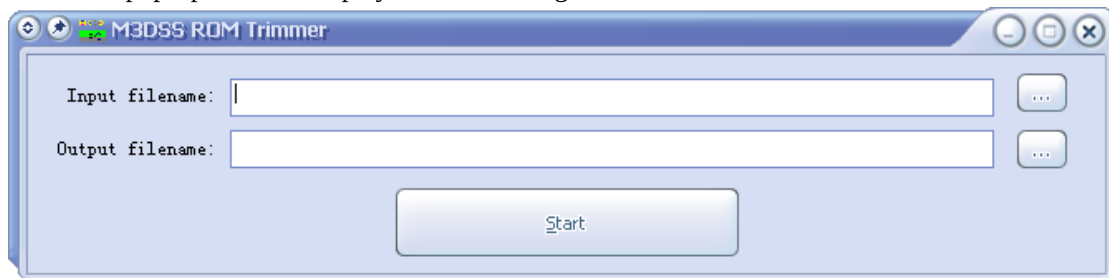
1\Brief

Because the capacity of NDS cartridge has a fixed standard, such as 128Mb, 256Mb, 512Mb and 1Gb etc, So the capacity of the Dump has the same standard: 128Mb, 256Mb, 512Mb and 1Gb(They will display on the PC like this: 16MB, 32MB, 64MB and 128MB, 1Byte=8bits).

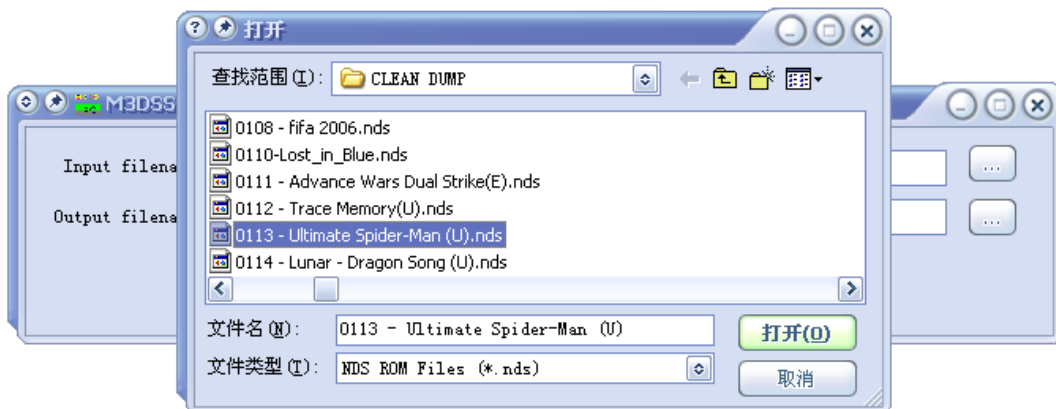
Every game has their capacity, which is not exactly the same as the standard. Supposed that the game has a 300Mb capacity, it needs a 512Mb game cartridge to run, and then the other 212Mb is redundant. The M3DS Simply ROM Trim Tool can delete the redundant data to save the space and also keep the game running well according to this theory.

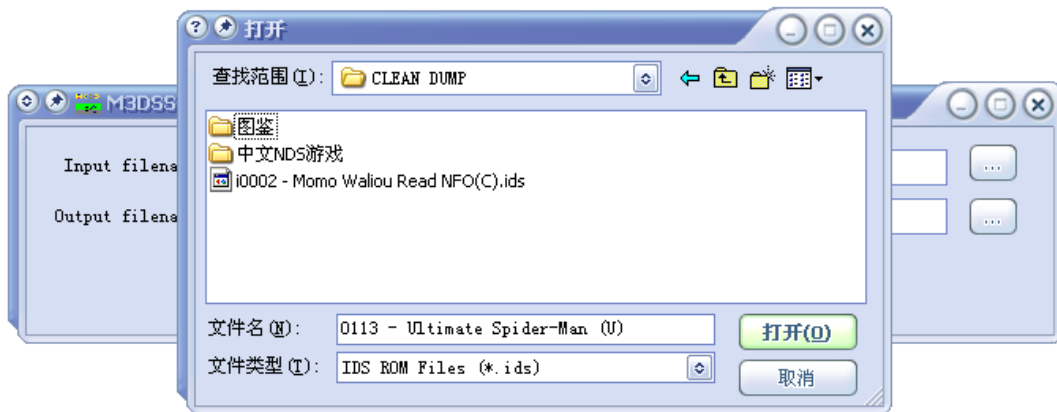
2\Installation Guide

There is a pop-up window displayed after running the software:

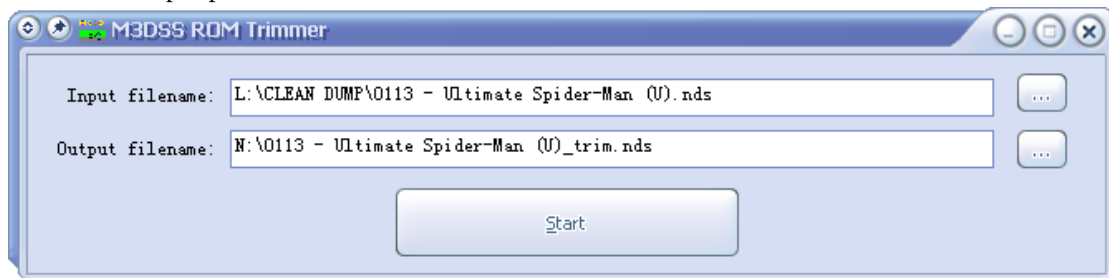


There are two textboxes, the top one for inputting the NDS/IDS game files, the '...' button can do a convenience browsing if you can't remember the file name and the path. Choose the correct input file type by clicking the pull-down menu according the ROM, which need to be trimmed. Please remember that .nds is extension of the NDS game and .ids is extension of the IDS.





The bottom textbox is for outputting the trimmed ROM's file (When you choose the input file, it will generate one automatically). You can change the output path if you need; default is the same as the input path. The '...' button can do a convenient location.



To start processing trim tool by clicking the 'Start' button once every thing is ready, a pop-up window will display the processing status.

You can see the difference between the trimmed ROM'S file and the original file, (0%-50% trims will be available according to the different ROMs.)



Name	Size	Type	Modified
0113.nds	65,536 KB	NDS File	2005-9-29 23:16
0113_trim.nds	63,713 KB	NDS File	2006-12-17 17:29

The Trimmed ROM can be copied and run on the SD/TF card directly!

Tips: The processing on the hard disk will be faster than processing on the SD/TF card as the hard disk has the higher read/write speed.