

TOP SECRET

Copy 107
3 Pages

NPIC/R-266/64
May 1964



PHOTOGRAPHIC INTERPRETATION REPORT

OLENYA GUBA SUBMARINE BASE OLENYA BAY, USSR



CIA

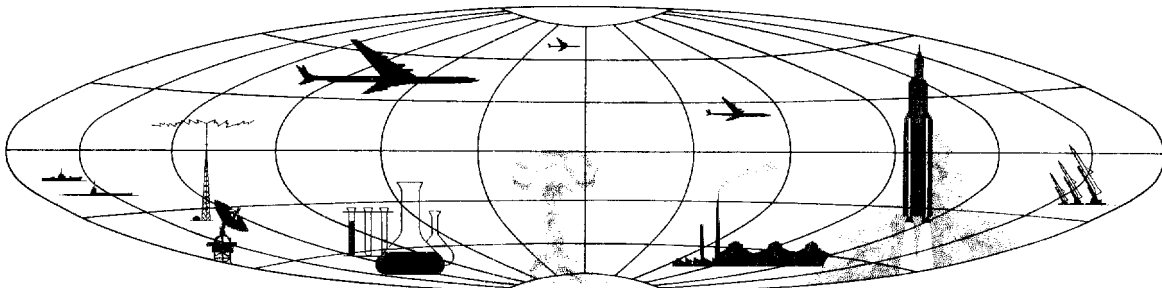


DIA



25X1

NATIONAL PHOTOGRAPHIC INTERPRETATION CENTER



Declass Review by NGA/DOD

TOP SECRET

GROUP 1
Excluded from automatic
downgrading and declassification

NPIC/R-266/64

OLENYA GUBA SUBMARINE BASE OLENYA BAY, USSR

25X1A

25X1A

Olenya Guba Submarine Base [REDACTED] is located on the south shore of Olenya Bay, 2 nautical miles (nm) northwest of Polyarnyy at 69-13N 33-23E (Figure 1). It includes landing facilities, an operations area, a dispersed storage area, an administrative/barracks area and a housing area (Figure 2).

Piers. The landing facilities consist of seven piers and a small boat dock. Piers I, II, IV, V and VII are finger piers 490 by 30 feet, 490 by 30 feet, 510 by 30 feet, 480 by 30 feet and 445 by 30 feet respectively. Pier VI is a T-head pier 85 by 30 feet at the head and 100 by 20 feet on the approach. Pier VIII is

an L-head pier 115 by 40 feet at the head and 115 by 25 feet on the approach. A small boat dock (III) is also located in this area.

Operations Area. The operations area contains a possible torpedo storage/checkout building 320 by 70 feet, a warehouse 290 by 70 feet, a 290- by 65-foot bunker, a 200- by 45-foot storage building, two shops 115 by 60 feet and 95 by 65 feet, a possible boiler house and 17 miscellaneous buildings of various sizes.

Storage Area. This area includes 15 dispersed storage buildings, three 200 by 40 feet, nine 225 by 35 feet and three 100 by 35 feet.

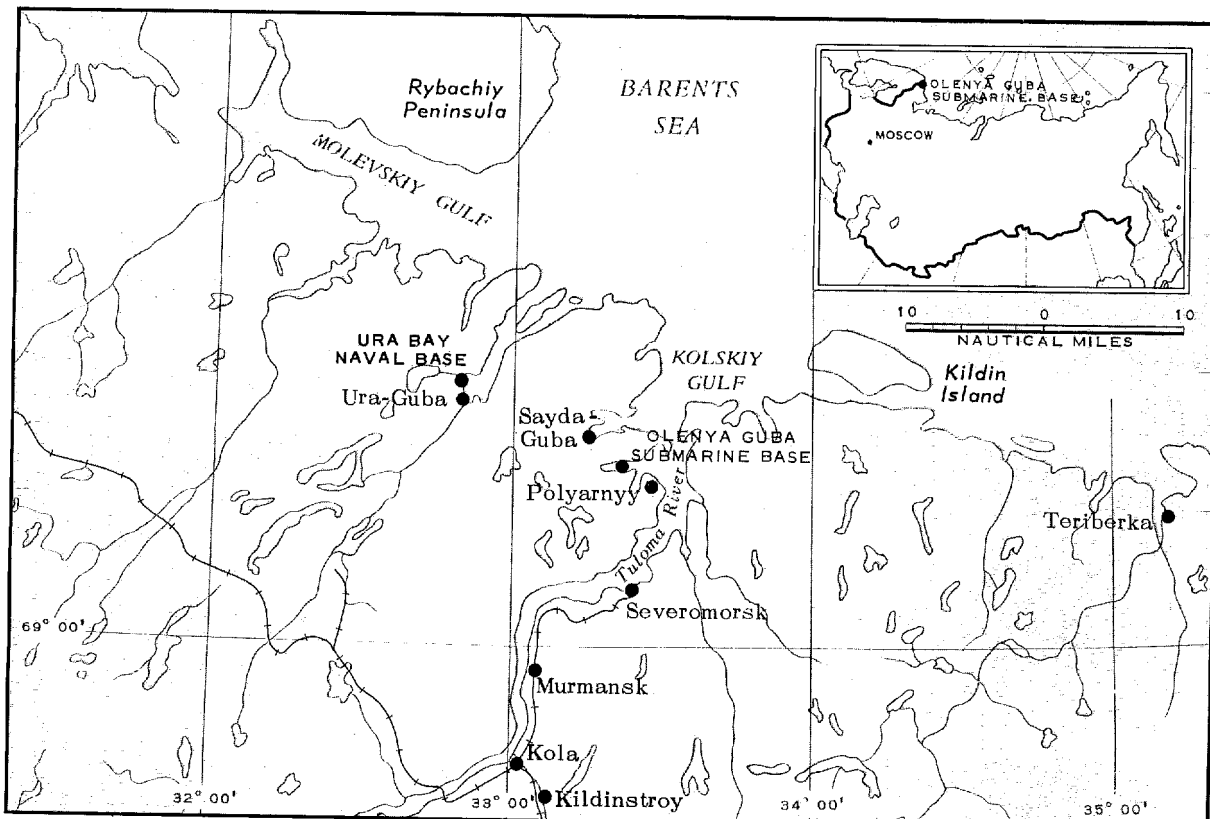


FIGURE 1. GENERAL LOCATION MAP.

NPIC H-9876 (4/64)

NPIC/R-266/64

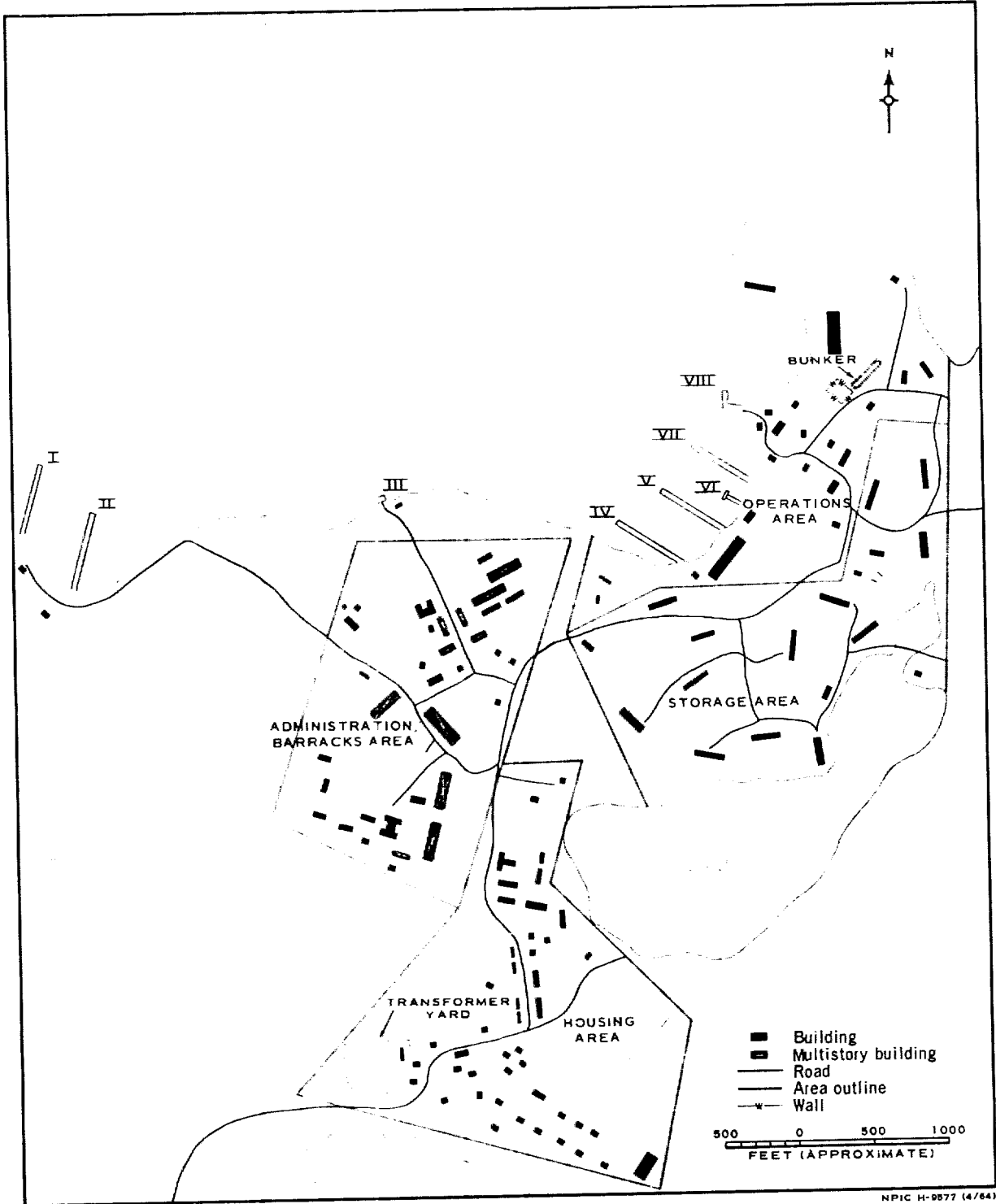


FIGURE 2. OLENYA GUBA SUBMARINE BASE, USSR.

NPIC/R-266/64

Three miscellaneous buildings are located in this area.

Administrative/Barracks Area. This area contains one U-shaped administration building 100 by 40 feet with two 50- by 35-foot wings, one H-shaped administration building 80 by 45 feet with two 105- by 30-foot wings, one 270- by 55-foot multistory administration building, four multistory barracks which range from 250 by 60 feet to 220 by 50 feet, one 200- by 75-foot multistory barracks and five 120- by 50-foot

multistory barracks. Other facilities in the area include 22 storage and support buildings of various sizes.

Housing Area. The housing area consists of a T-shaped administration building 125 by 50 feet with an 80- by 45-foot wing, one 185- by 75-foot barracks and 44 single/multiple housing units and support buildings. A transformer yard is located on the west edge of the area.

25X1A

REFERENCES



MAPS OR CHARTS

ACIC. US Air Target Chart Series 200, Sheet 0051-18HL, 3d ed, Apr 63, scale 1:200,000 (SECRET)

ACIC. US Air Target Mosaic Series 50, Sheet 0051-18/8ZMA (Prov.), 1st ed, Mar 58, scale 1:50,000 (SECRET)

DOCUMENTS

25X1C



REQUIREMENT

C-C14-81,001 (partial answer)

NPIC PROJECT

N-119/64

TOP SECRET
Approved For Release 2006/01/17 : CIA-RDP78B04560A002200010025-7

Approved For Release 2006/01/17 : CIA-RDP78B04560A002200010025-7
TOP SECRET