

NATIONAL PHOTOGRAPHIC  
INTERPRETATION CENTER

**BASIC IMAGERY  
INTERPRETATION  
REPORT**

**MOSKVA ELECTRONICS RESEARCH INSTITUTE  
NOVAYA NII 885**



**ELEC/COMMO/RADAR R&D FACILITIES**

**USSR**

**MAY 1970**

25X1A

25X1A

**Handle via  
Talent-Keyhole  
Channels Only**

Declass Review by NIMA/DOD

ARCHIVAL RECORD  
PLEASE RETURN TO  
AGENCY ARCHIVES, 232166/1

**TOP SECRET**



TCS-22165/70

RCA-20/0002/70

COPY NO 179

4 PAGES

WARNING

This document contains information affecting the national security of the United States within the meaning of the espionage laws U. S. Code Title 18, Sections 793 and 794. The law prohibits its transmission or the revelation of its contents in any manner to an unauthorized person, as well as its use in any manner prejudicial to the safety or interest of the United States or for the benefit of any foreign government to the detriment of the United States. It is to be seen only by personnel especially indoctrinated and authorized to receive information in the designated control channels. Its security must be maintained in accordance with regulations pertaining to TALENT-KEYHOLE Control System.

Handle Via  
Talent-KEYHOLE  
Control System Only

Approved For Release 2002/07/01 : CIA-RDP78T04563A000600010042-5

TOP SECRET RUFF

BCA-20/0002/70  
TCS-22165/70

|  |         |
|--|---------|
| INSTALLATION OR ACTIVITY NAME                        | COUNTRY |
| Moskva Electronics Research Institute Novaya NII 885 | UR      |

|                 |                        |  |
|-----------------|------------------------|--|
| UTM COORDINATES | GEOGRAPHIC COORDINATES |  |
| NA              | 55-44-44N 037-43-32E   |  |

25X1A

MAP REFERENCE  
ACIC. US Air Target Chart, Series 200, Sheet 0167-5, scale 1:200,000

|  |
|--|
|  |
|--|

25X1D

### ABSTRACT

Moscow (Moskva) Electronics Research Institute Novaya NII 885 is reported to be an electronics research and development facility established in the Soviet Union during World War II. No physical features or activity that reveal the function of the institute have been observed on photography. The institute consists of eight industrial-type buildings, the largest of which is an assembly building with approximately 33,000 square meters (350,000 square feet) of roof cover.

This report provides a description of the facility, an annotated photograph, and mensural data.

### INTRODUCTION

Moscow Electronics Research Institute Novaya NII 885, located in the center of the city of Moscow adjacent to the Moscow Electronics Research Institute NII 10 [redacted] is approximately 4.0 nautical miles east-southeast of the Kremlin.

25X1A

Established during World War II, Institute 885 is subordinate to the Soviet Ministry of the Radio Industry, and, according to collateral, has developed ground guidance systems, telemetry systems and radar homing devices for surface-to-air missiles.<sup>1</sup> However, these functions are not revealed on available photography.

### BASIC DESCRIPTION

The institute (Figure 1) is composed of eight industrial-type buildings situated in a rectangular pattern near the center of Moscow. These buildings include one large assembly building, two multistory administration/engineering buildings, two small support buildings, and three shop buildings. Total roof cover for the institute is approximately 47,500 square meters (511,000 square feet). The institute is road served only,

Approved For Release 2002/07/01 : CIA-RDP78T04563A000600010042-5

TOP SECRET RUFF

Handle Via  
Talent-KEYHOLE  
Control System Only

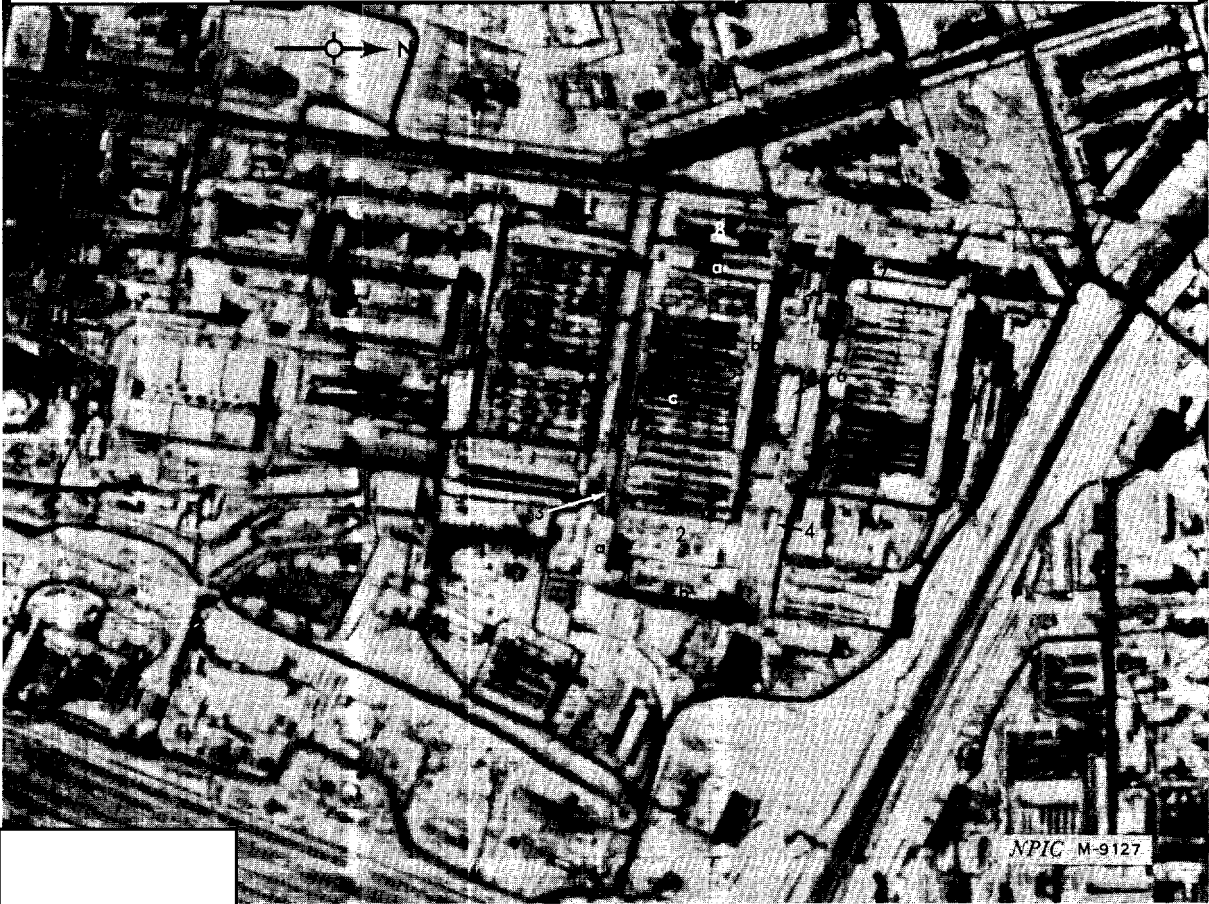
~~TOP SECRET RUFF~~

25X1D

25X1D

| ITEM | DESCRIPTION    | ITEM | DESCRIPTION    |
|------|----------------|------|----------------|
| 1    | Admin/eng bldg | 6    | Shop bldg      |
| a    | Wing           | 7    | Shop bldg      |
| b    | Wing           | 8    | Admin/eng bldg |
| 2    | Shop bldg      |      |                |
| 3    | Support bldg   |      |                |
| 4    | Support bldg   |      |                |
| 5    | Assembly bldg  |      |                |
| a    | Admin wing     |      |                |
| b    | Admin wing     |      |                |
| c    | Assembly area  |      |                |

25X1D



25X1D

FIGURE 1. MOSCOW ELECTRONICS RESEARCH INSTITUTE NOVAYA NII 885

~~TOP SECRET RUFF~~

Handle Via  
Talent-KEYHOLE  
Control System Only

Approved For Release 2002/07/01 : CIA-RDP78T04563A000600010042-5

TOP SECRET RUFF

RCA-20/0002/70  
TCS-22165/70

25X1A

with rail transportation available at the nearby Moscow Railroad Station and Yards, Andronovka [redacted] No power facilities are identified, but the institute could use city utilities. The entire area is walled with no other security measures discernible.

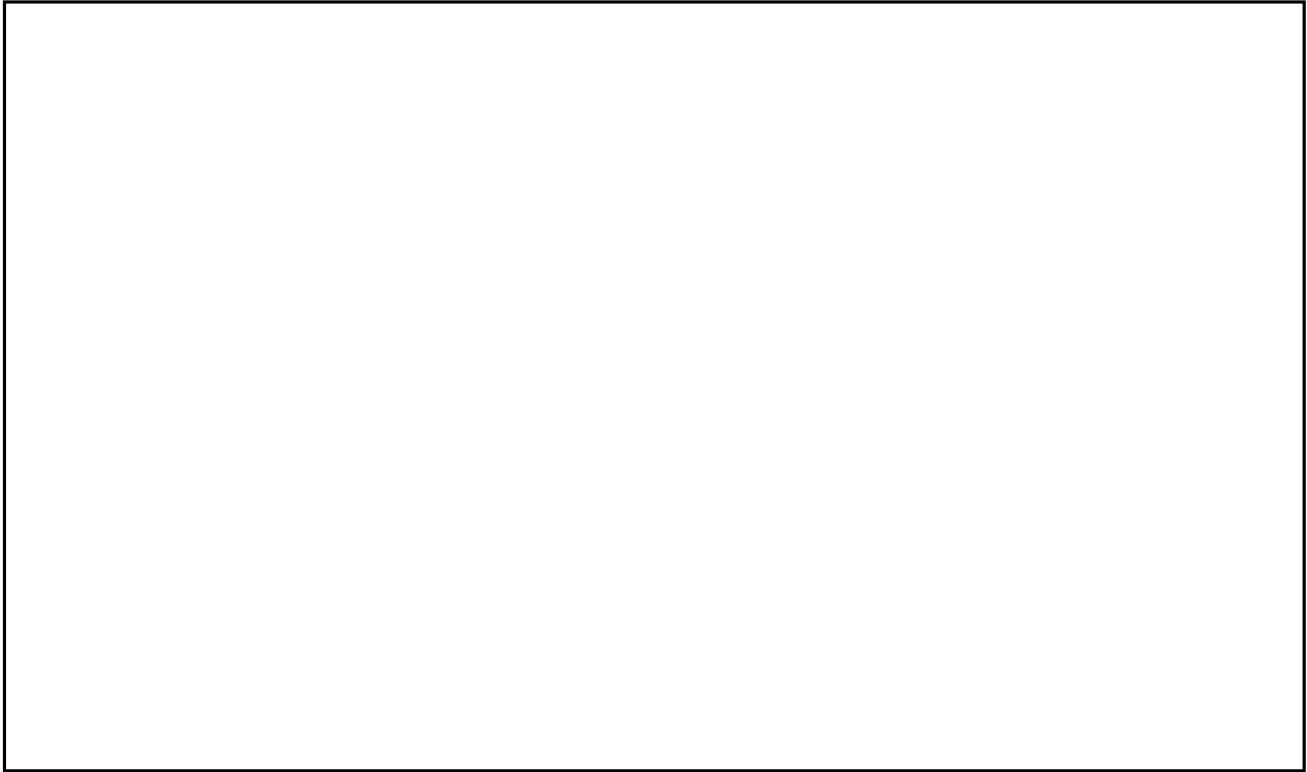
25X1D

25X1D

The institute appeared to be complete on the first [redacted] photography [redacted] The only new construction observed on subsequent photography is the addition of a wing to an administration/Engineering building (item 1). The new wing (item 1a) was first identified [redacted] no other significant changes are discernible at the institute.

25X1D

REFERENCES



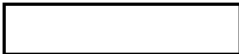
MAPS OR CHARTS

ACIC. US Air Target Chart, Series 200, Sheet 0167-5 scale 1:200,000

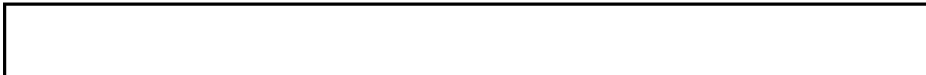
DOCUMENT

1. CIA. SI/77-54, Scientific Research Institute (NII) 885, Moscow, and Special Bureau No 1, Monino, Guided Missile Activities and Affiliations, Feb 54 (SECRET)

REQUIREMENT



NPIC Project 220701



Approved For Release 2002/07/01 : CIA-RDP78T04563A000600010042-5

**TOP SECRET**

Approved For Release 2002/07/01 : CIA-RDP78T04563A000600010042-5

**TOP SECRET**