

~~TOP SECRET~~

PHOTOGRAPHIC INTERPRETATION REPORT



DETA
TALL KING-AW
RADAR FACILITY
RUMANIA

[Redacted]

SEPTEMBER 1967

COPY 116

2 PAGES

25X

[Redacted]

25X

Declass Review by NIMA/DOD

GROUP 1 EXCLUDED FROM
AUTOMATIC DOWNGRADING
AND DECLASSIFICATION

~~TOP SECRET~~

25X1

Approved For Release 2003/12/19 : CIA-RDP78T04759A007300010039-5

Approved For Release 2003/12/19 : CIA-RDP78T04759A007300010039-5

TOP SECRET

25X1D

25X

NATIONAL PHOTOGRAPHIC INTERPRETATION CENTER

INSTALLATION NAME Deta TALL KING-AW Radar Facility Rumania	GEO COORDS 45-25-00N 021-12-00E NPIC TARGET NO 0251-144A	PUBLICATION DATE September 1967 BE NO None
--	---	---

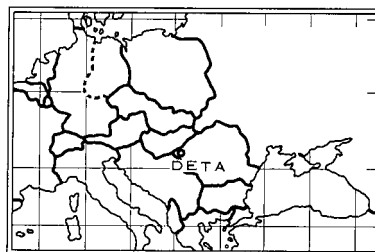
AD AREA RU	REQUIREMENT NSA/SOC/R 20-68	NPIC PROJECT 11533/68 (partial answer)
---------------	--------------------------------	---

REFERENCES

ACIC series, scale 1:200,000; NPIC [redacted] (TS [redacted])

25X

Location: 1.5 nm NW of Deta
 Construction Status: Complete
 Configuration: Single
 Activity: None observed
 Security: Single fenced
 Vegetation & Terrain: Farmland & flat
 Operational Components:



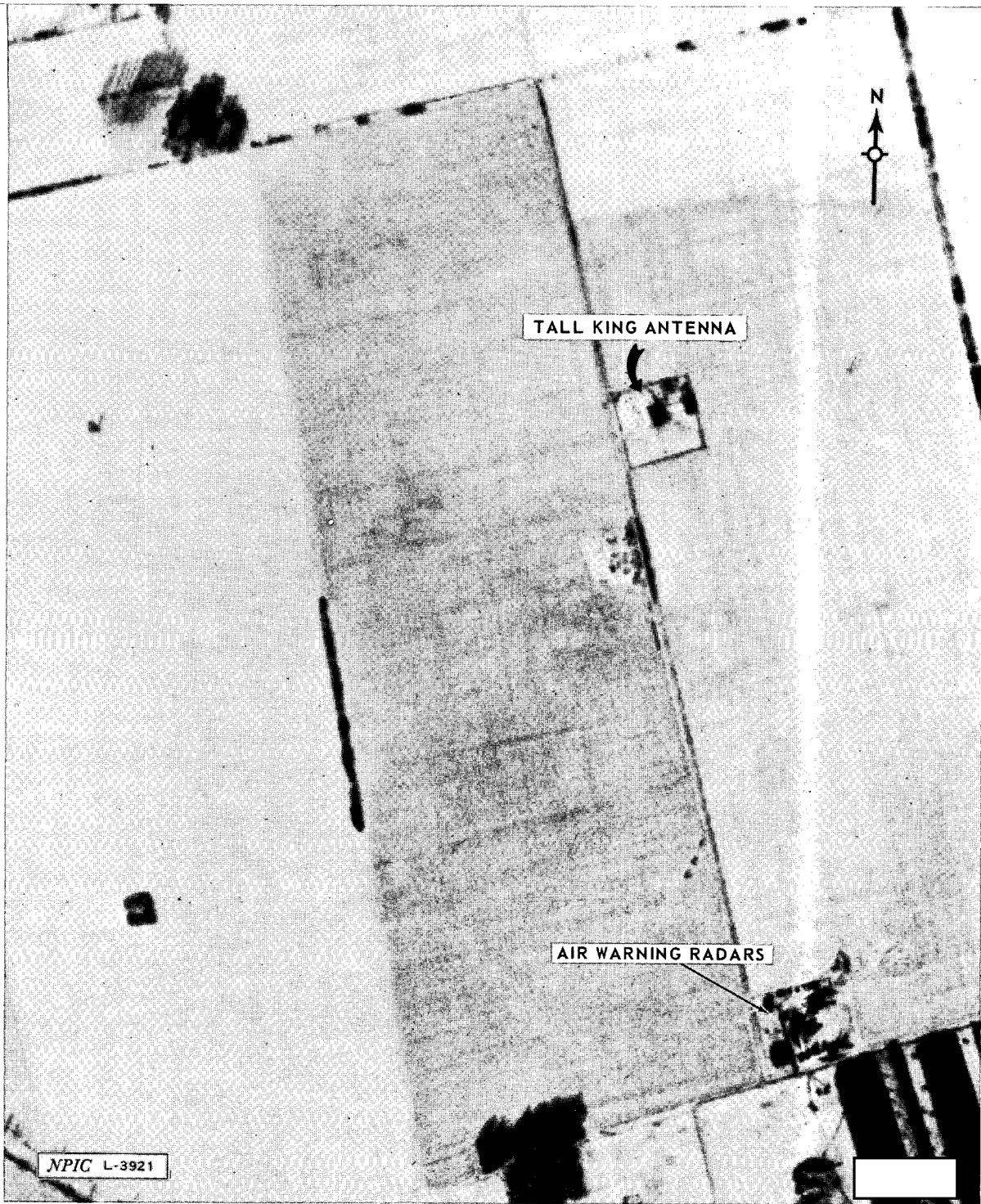
TALL KING R.P.
 3 occupied radar mounds 3000 ft S
 Support Components: 1 antenna building, 1 support building, and 1 generator building
 Site Support Facility: 6 support buildings are 3000 feet south of the R.P.

TOP SECRET

25X
25X

TOP SECRET

25X



DETA TALL KING-AW RADAR FACILITY

25X1D

TOP SECRET

25X
25X