

ILLEGIB

Approved For Release 2004/03/26 : CIA-RDP78T05439A000400150037-5

Approved For Release 2004/03/26 : CIA-RDP78T05439A000400150037-5

TOP SECRET

14436

NPIC/R-801/64

September 1964



Copy 4

5 Pages

PHOTOGRAPHIC INTERPRETATION REPORT

# COMMUNICATIONS FACILITIES, SLONIM AREA, USSR

Declass Review by NGA.



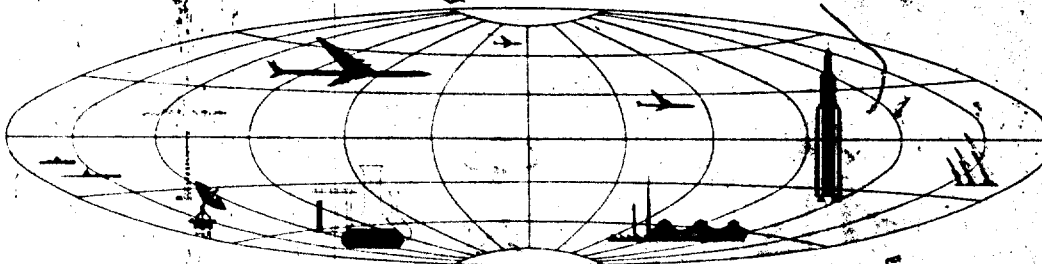
CIA



DIA



NATIONAL PHOTOGRAPHIC INTERPRETATION CENTER



TOP SECRET

GROUP 1  
Excluded from automatic  
downgrading and declassification

### COMMUNICATIONS FACILITIES, SLONIM AREA, USSR

#### INTRODUCTION

A search was made of photography of the area around the Headquarters 8th Tank Division (HQ), situated just south of the town of Slonim, in order to locate and describe military vehicles/equipment and communications facilities possibly utilized by this division. The available photography is not suitable in quality or scale to furnish any details on vehicles/equipment which may be present in the area, but two communications sites were located in the general vicinity, one a high-frequency (HF) facility at 53-06-40N 25-13-00E, 4.5 nautical

miles (nm) northwest of the HQ, and the second a very low frequency (VLF) facility (BE No [redacted] at 53-08N 25-23E, 5 nm northeast of the HQ (Figure 1). No communications facilities or antennas were observed within the limits of the HQ area, nor was it possible to determine what association, if any, the two communications facilities have with the division; however, the VLF facility does have some of the characteristics normally found at a military post, such as barracks-type buildings and an athletic field.

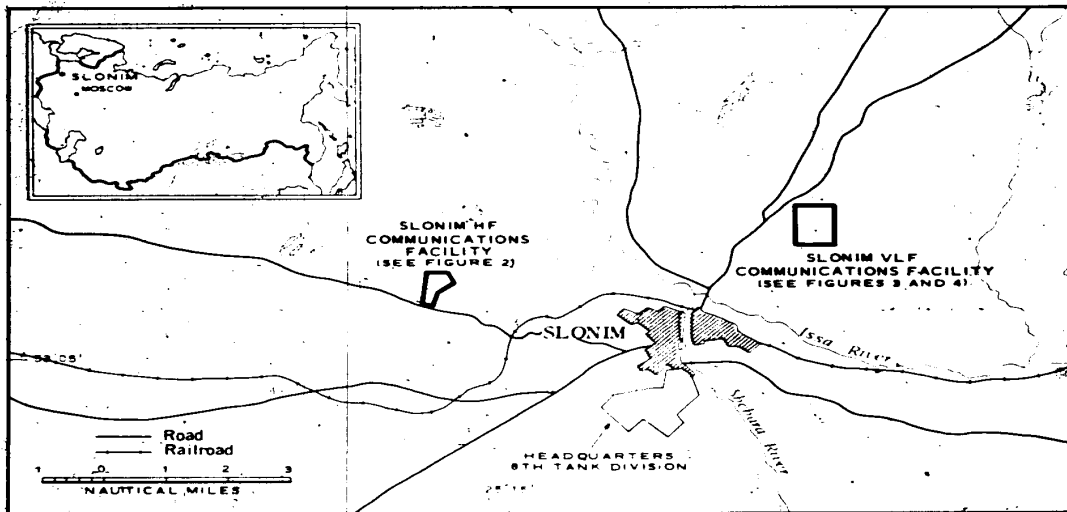


FIGURE 1. LOCATION OF COMMUNICATIONS FACILITIES, SLONIM, USSR.

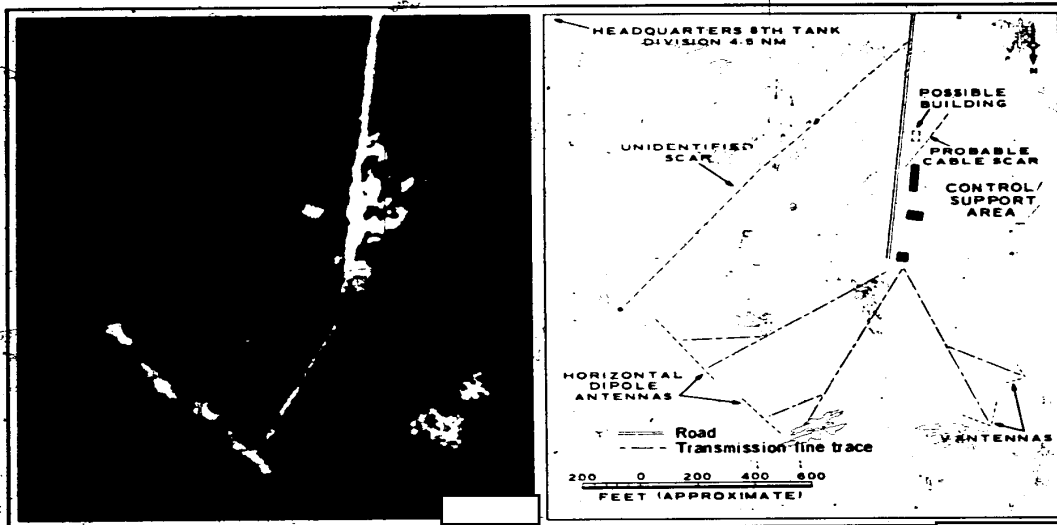


FIGURE 2. SLONIM HF COMMUNICATIONS FACILITY.

#### SLONIM HF COMMUNICATIONS FACILITY

The Slonim HF Communications Facility (Figure 2) is situated in a heavily wooded area 4.5 nm northwest of the HQ and is served by an improved road from the town of Slonim.

The facility contains two pairs of horizontal dipole antennas and two V antennas, a total of six HF antennas. One pair of the horizontal dipoles is oriented at approximately 55-235 degrees, the other pair at approximately [redacted]

[redacted] The small V antenna is oriented at approximately [redacted] and the large V antenna at 160 degrees (considering the direction of fire to be toward the open end of

the V only). A control/support area is situated south of the antennas, on the west side of the service road near its terminus. There are at least three buildings present in the area. Vegetation and shadow obscure much of the facility, precluding a more detailed description and, in particular, any attempt to determine the operating frequencies of the antennas.

This facility has the same general arrangement and types of antennas as the new communications facilities recently noted at or near 36 Soviet MRBM/IRBM launch areas. 2

#### SLONIM VLF COMMUNICATIONS FACILITY

The Slonim VLF Communications Facility (Figures 3 and 4) is in a wooded area 5 nm northeast of the HQ. The facility, occupying an area of about 440 acres, is secured by

fencing and is road served.

The VLF antenna, nearly identical in size and configuration to a VLF antenna located at 53-17N 48-07E in the Zhemkovka area, 3/

TOP SECRET

NPIC/R-801/64

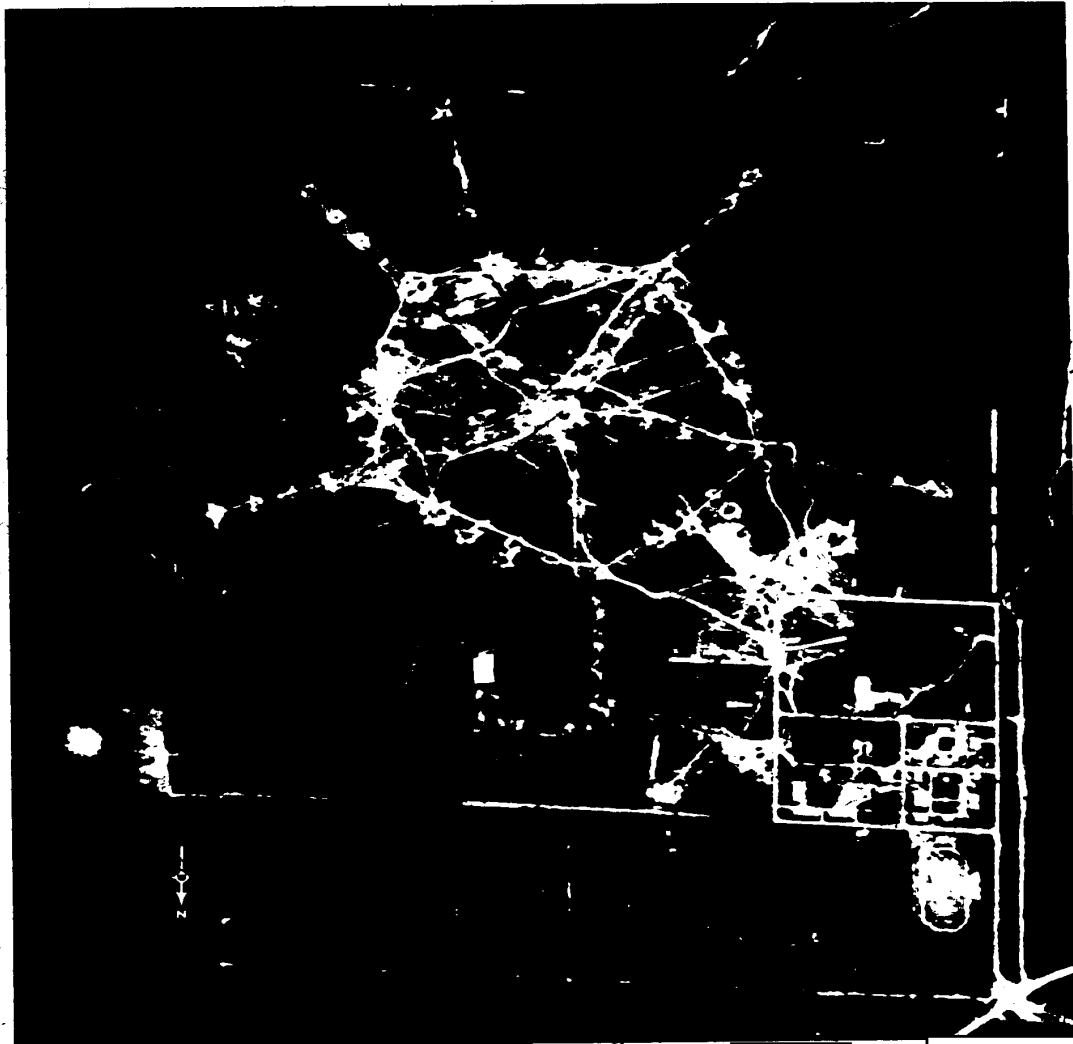


FIGURE 3. SLONIM VLF COMMUNICATIONS FACILITY.

TOP SECRET

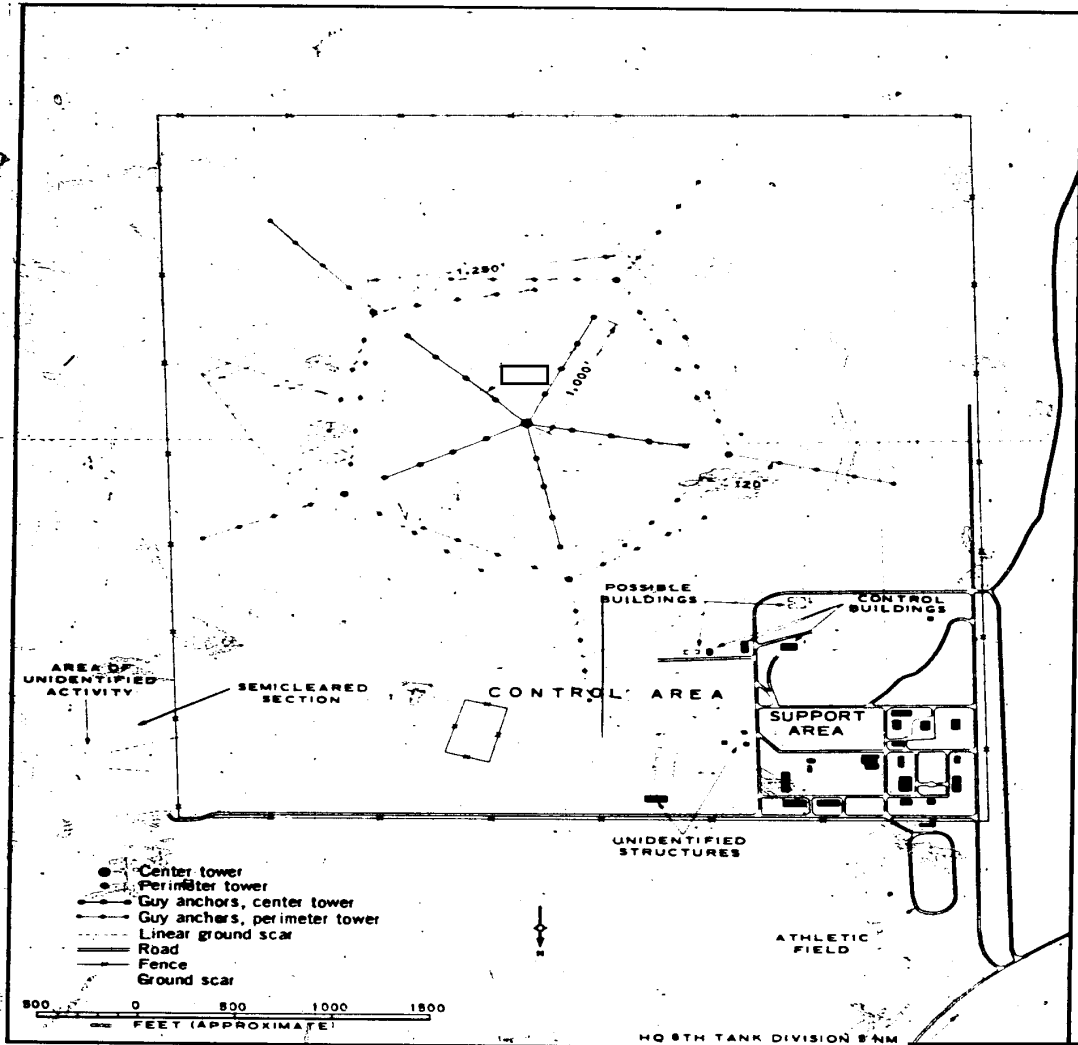


FIGURE 4. SLONIM VLF COMMUNICATIONS FACILITY.

TOP SECRET

NPIC/R-801/64

is pentagonal in shape, consisting of a center tower surrounded by five perimeter towers which are spaced an equal 1,250 feet apart (all measurements are approximate). Each of the perimeter towers is 750-850 feet high, and has three guy legs 120 degrees apart with four guy anchors to each leg. The center tower, somewhat higher (850-950 feet) than the perimeter towers, has five guy legs [redacted] apart with four guy anchors to each leg.

A control area northwest of the antenna contains several control buildings, an approximately 350- by 200-foot fenced area of unidentified function, and a number of unidentified structures and ground scars. Interpretation of this area is limited by halation of the light-

toned ground scars, and by vegetation obscuring shadow characteristics.

A support area in the extreme northwest corner of the facility includes a large administration building, 3 barracks-type buildings, and at least 13 other associated buildings. A single building and an athletic field are outside the fence immediately north of this area.

An area of unidentified activity is positioned in the center of a rectangular semicleared section of woods just outside the northeast corner of the main fence. On photography, this area appears as a roughly circular, light-toned ground scar with two linear ground scars extending westward.

REFERENCES



MAPS OR CHARTS

SAC. US Air Target Chart, Series 200, Sheet 016S-1SHL, 3d ed, Dec 62, scale 1:200,000 (SECRET)

DOCUMENTS

1. NPIC. R-281 64, *Slonim Army Barracks and Headquarters, 8th Tank Division, Slonim, USSR, Belorussian Md*, May 64 (TOP SECRET [redacted])
2. NPIC. R-793 64, *New HF Communications Facilities at Soviet MRBM/IRBM Launch Areas*, Aug 64 (TOP SECRET [redacted])
3. NPIC. R-310 63, *Mission Coverage Index, 1002-1, 24-26 September 1963*, Dec 63 (TOP SECRET [redacted])

REQUIREMENT

NSA. P0432 R57-64

NPIC PROJECT

N-727 64

- 5 -

TOP SECRET