

CENTRAL INTELLIGENCE AGENCY

INFORMATION REPORT

This Document contains information affecting the National Defense of the United States, within the meaning of Title 18, Sections 793 and 794, of the U.S. Code, as amended. Its transmission or revelation of its contents to or receipt by an unauthorized person is prohibited by law. The reproduction of this form is prohibited.

SECRET

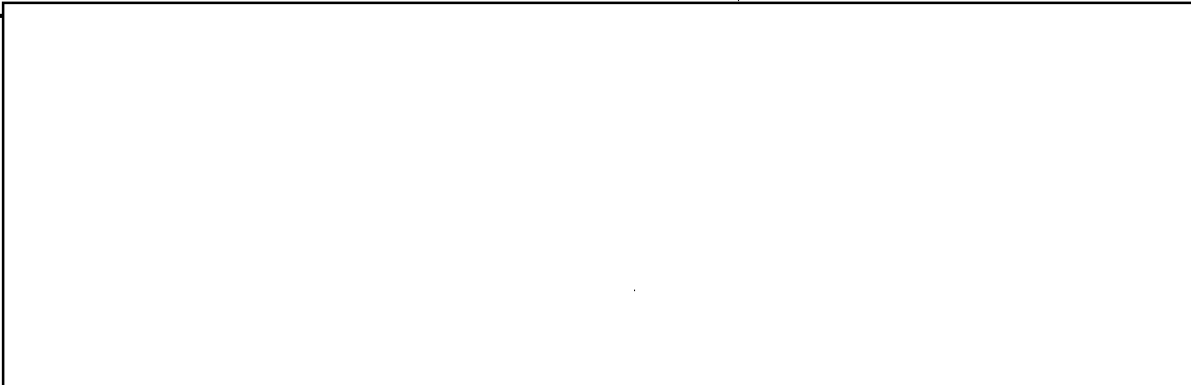
25X1 []

COUNTRY	USSR (Moscow and Kalinin Oblasts)	REPORT NO.	[] 25X1A
SUBJECT	Site Layouts of Zavod 88, Podlipki, and Branch No. 1, Institute 88, Gorodomlya Island	DATE DISTR.	28 May 1953
		NO. OF PAGES	11
DATE OF INFO.	[]	REQUIREMENT NO.	[] 25X1A
PLACE ACQUIRED	[]	REFERENCES	[]

25X1C

THE SOURCE EVALUATIONS IN THIS REPORT ARE DEFINITIVE.
THE APPRAISAL OF CONTENT IS TENTATIVE.
(FOR KEY SEE REVERSE)

25X1



Site Layout of NII 88

1. Institute 88 was part of Zavod 88, which was located in Podlipki, a suburb of Moscow. Zavod 88 was built about 1928. During World War II it was transferred to a town in southern Siberia (name unknown), but was moved back to Moscow after the war. Its main product had been heavy artillery, I believe, but in 1946 the institute was given the task of developing guided missiles.
 - a. The following points are shown on page 7, which is a sketch of the area occupied by Zavod 88.
 - (1) Main plant building, containing the laboratories belonging to the institute.

SECRET

25X1

4/4

STATE	#x	ARMY	#x	NAVY	#x	AIR	#x	FBI		AEC			
-------	----	------	----	------	----	-----	----	-----	--	-----	--	--	--

25X1A

SECRET

-2-

- (2) Large assembly hall (possibly for large rocket assembly) was built in 1947 or 1948.
- (3) Metal die casting workshop.
- (4) Building in which the upper floor contains drafting rooms and the lower floor a machine shop.
- (5) Water tower, 20 to 25 meters high and made of stone, is also used for fire guard position.
- (6) Main entrance gate.
- (7) Garden area.
- (8) Small park and second entrance gates.
- (9) Rotary traffic
- (10) Power station, in which I think a steam turbine is used. A large amount of coal is stored next to this building.
- (11) Wood storage area and saw mill.
- (12) Bakery.
- (13) Area of another industrial plant, not connected with Zavod 88.
- (14) Living quarters for some Germans and Soviets.
- (15) Prisoner-of-war area. A large number of German PWs were interned here for manual labor around the plant area. Most of these were repatriated in 1948.

During their first two months at Zavod 88, the 40 to 50 Germans worked in one of the drafting rooms in Building #4. After this they were assigned to various laboratories in Building #1.

25X1

- b. Sketch on p. 8 is a copy of [] sketch of the main building (Building #1) of Zavod 88. It should be mentioned that the German specialists could not enter any parts of the plant to which they were not assigned. Therefore, the information on this plant is not very complete.

25X1A

[] the various laboratories in the laboratory wing were constantly moved about. The following information on this wing of the building is correct as of spring 1948.

Basement contained laboratories for design of low frequency power distribution of ground and airborne equipment for rockets.

25X1A

First Floor contained test equipment and instrument servicing, repair and calibration, and development of recording equipment for telemetering systems. []

25X1A

25X1A

Second Floor contained the reconstruction of MESSINA telemetering equipment [] Later a new telemetering development was worked on, which had more channels than the MESSINA and was presumably similar to an American pulse system. []

25X1A

25X1A

A Bahnmodell

SECRET

SECRET

-3-

25X1A

25X1A

(path simulator) development also took place on the second floor. This work was carried on by BUBERMAN (Soviet) after HOCH left for Ostashkov in March 1947.

Third Floor contained a gyroscope laboratory for steering and stability of rockets as well as drafting rooms.

Fourth Floor contained electronic development laboratories, reconstruction of Wasserfall and Schmetterling missiles, rudder actuator (hydraulic) laboratory, and electronic components storage.

25X1A

Ostashkov and Gorodomlya

2. a. Sketch on p. 9 is a copy of sketch of Ostashkov (N 57 09, E 33 07) and Gorodomlya, at the southern end of the Seliger Lake.

25X1

b. Sketch on p. 10 is a copy of the island of Gorodomlya.

25X1A

- (1) Main institute building.
- (2) Six wooden two-story buildings used as family quarters - five to seven families each.
- (3) Two brick buildings - quarters for 12 families in each.
- (4) Club building (auditorium, library, party rooms).
- (5) Same as no. 2.
- (6) Bridge for footpath.
- (7) Southern harbor for personnel traffic.
- (8) Winter exit for road across frozen lake.
- (9) Living quarters for about 30 guards.
- (10) School - 40 to 50 pupils.
- (11) Surveyed area for planned airport. Radio guidance equipment was set up here.
- (12) Clinic.
- (13) Kindergarten.
- (14) Carpentry shop.
- (15) Sewage disposal plant.
- (16) Swamp and small lake.
- (17) Test stand for rocket motors.
- (18) Buildings associated with test stand.
- (19) Fire house.
- (20) Oxygen compression and liquefaction plant.
- (21) Wooden garage for four or five cars.
- (22) Freight storage space.
- (23) North harbor for trucks, cars, and heavy freight.
- (24) Storage cellars for fuels, lubricants, coal, alcohol, etc.

SECRET

SECRET

- 4 -

- (25) Saw mill.
- (26) Living quarters (wood).
- (27) Restaurant, cafeteria, bakery.
- (28) Administration building (brick, one-story).
- (29) Food storage (concrete).
- (30) Water tower.
- (31) Water pumping station.
- (32) Fuel storage for power station. An underground pipe runs from no. 23 to no. 32 for delivering diesel fuel.
- (33) Power station - three diesel generators.
- (34) Workshop for buildings and grounds service.
- (34a) Wood storage for heating buildings one to six.
- (35) Lake with two islands.
- (36) Small swampy lake.
- (37) Barn for cattle and horses.
- (38) Small church.
- (39) Living quarters.
- (40) Living quarters.

25X1A c. [redacted] future plans called for a fairly extensive construction program. Railroad tracks were to be run from Building #1 to the test stand (no. 17) and several new buildings were to be constructed in this area. A central heating plant was installed in the club building (no. 4) in 1950, and it was planned to connect several adjacent buildings to this plant. Some less definite plans called for extending the second floor of the main building (no. 1) and for putting an antenna platform on top of one section of this building.

25X1 d. [On page 11 is a copy of [redacted] sketch of the main building (no. 1) on Gorodomlya.]

- (1) Large hall for assembly of major parts. In one corner of this hall was located a large oven for heating metal up to 800 or 900 degrees Centigrade.
- (2) Workshop with saws, metal cutters, electric and acetylene welding equipment.
- (3) Machine shop with lathes, milling machines, etc.
- (4) Precision drilling shop (for templates).
- (5) Toilet.
- (6) Assembly of small precision parts.
- (7) Machine shop with lathes, punches, drills, etc.
- (7a) Heat treatment of metals and hardness and tension testing machines.
- (8) Grinding tools.

SECRET

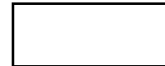
SECRET
- 5 -

- (9) Tool storage room.
- 25X1A (10) Small parts assembly - moved to no. 6 in autumn of 1951; [redacted]
25X1A [redacted] then moved to no. 10. Basement under no. 10: plating room for chrome and nickel plating.
- (11) Compressor and compressed air bottles for wind tunnel.
- (12) Vertical wind tunnel for supersonic air speed. This also includes a "Toepler" apparatus for photographing shock waves.
- (13) Rooms associated with wind tunnel operation (in basement and ground floor), including Dr. ALBRING's office, storage room, tools, etc.
- (14) Ground floor contains secret archives and papers of the "First Department" (Security Control Forces). Basement contains a photo laboratory, blueprint room, telephone switchboard, radio transmitter and receiver (short and medium wave); second floor contains drafting room for buildings and grounds department.
- (15) Ground floor contains entrance and cloak room. Basement houses small laboratory for centrifugal and strength testing of structural parts (headed by Rudolf MUELLER); second floor houses director's conference room and the chief engineer's office.
- (16) Ground floor contains secret library, offices. Basement contains chemical laboratory and small combustion test stand, and the second floor contains offices.
- (17) Ground floor contains offices. Basement contains chemistry laboratory, and second floor contains large drafting room for rocket design.
- (18) Ground floor contains section for gyroscope stability and steering design and rudder actuation (hydraulic) equipment. Basement contains a water canal.
- 25X1X (19) Ground floor contains low and high frequency laboratories. [redacted]
25X1X [redacted] Basement contains low frequency laboratory and laboratory for fuel and oxygen nozzles.
- (19a) Water tanks for nozzle tests in nozzle laboratory. Water is sprayed under pressure from compressed air, and is used instead of alcohol or fuel, for which the nozzle is intended. The distribution of the spray and the size of the drops are shown by filter paper which is covered by a special curtain shutter. Another means of determining distribution is to set up a number of small beakers and check the amount of water in each. KIRST, PAUER, and BERGEMANN worked in this laboratory; [redacted]
- 25X1A (20) Ground floor contains laboratory for design, construction, and repair of test equipment. Basement contains storage of electronic and chemical equipment.
- (21) High frequency laboratory.
- (22) Lacquer and paint spray shop.

SECRET

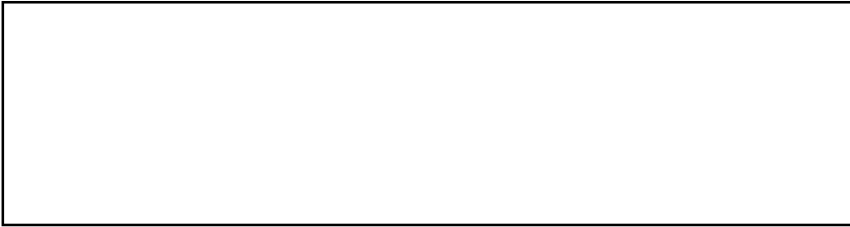
SECRET

-6-



On the roof above no. 20, a two-meter-diameter turn table was located for testing antenna characteristics. A 28-meter-high antenna mast was located 60 meters west of this point to make the tests.

ILLEGIB

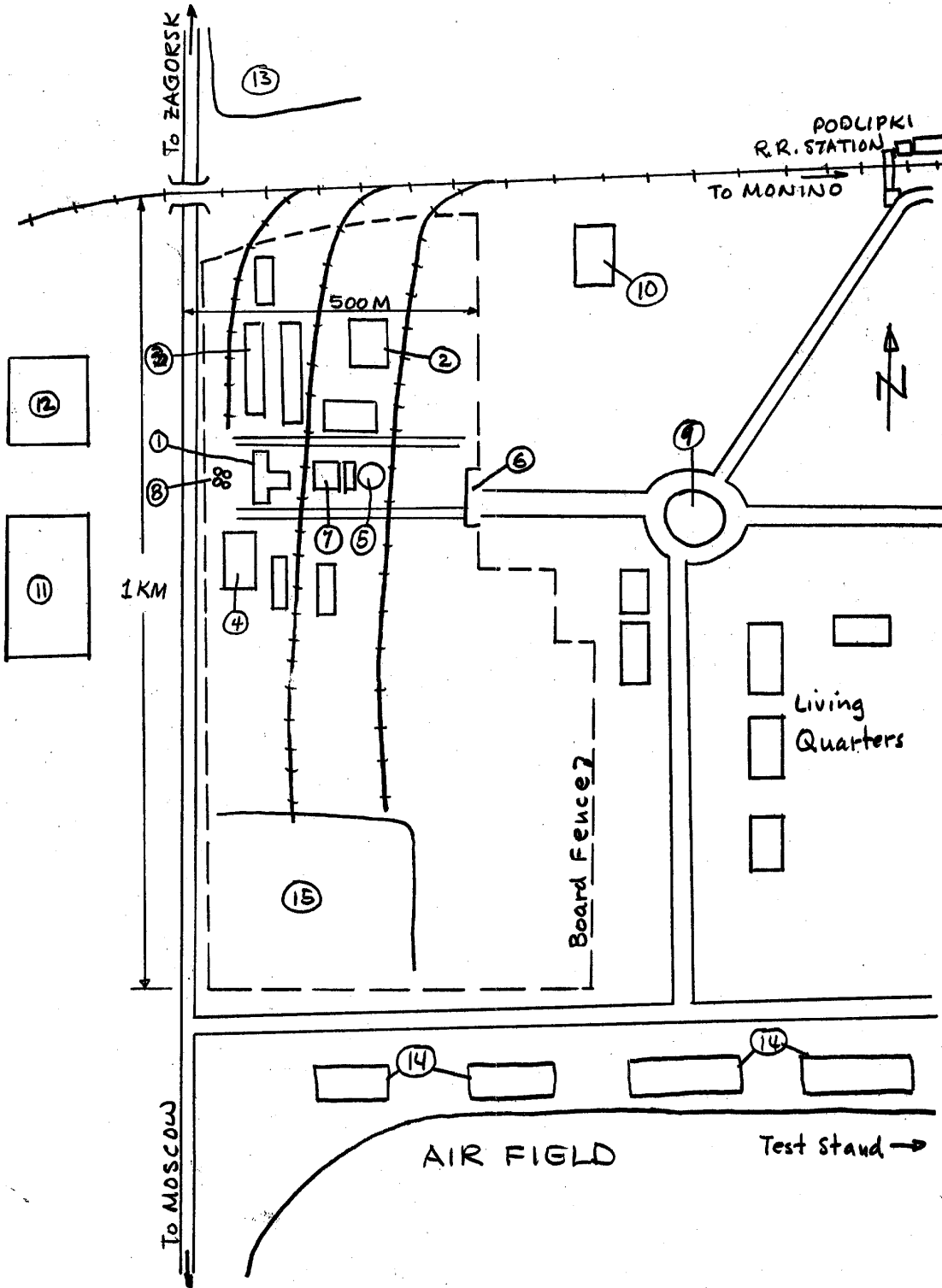


SECRET

SECRET



- 7 -



AREA SKETCH of ZAVOD 88-MOSCOW

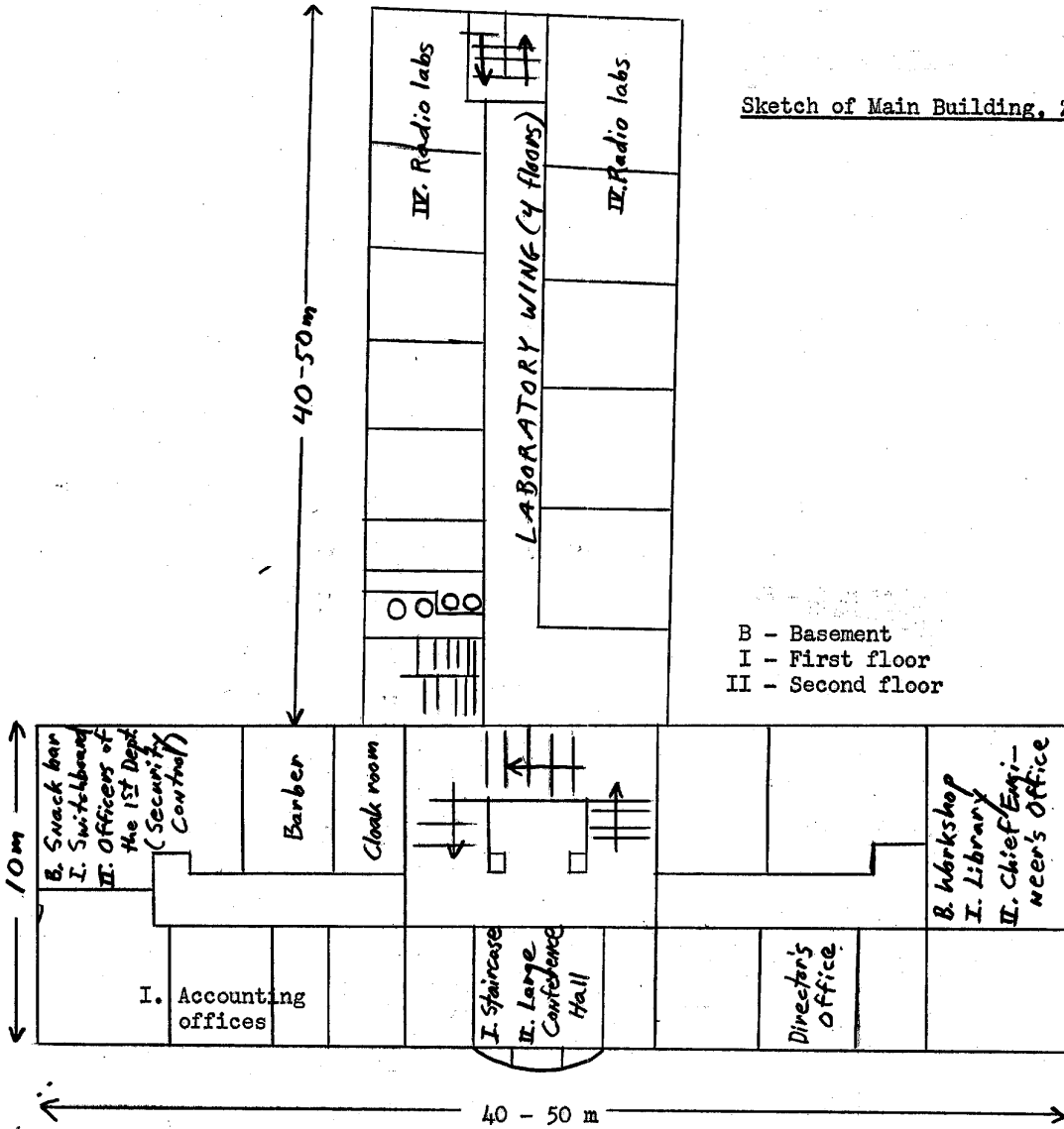
- SECRET -

SECRET

- 8 -



Sketch of Main Building, Zavod 88

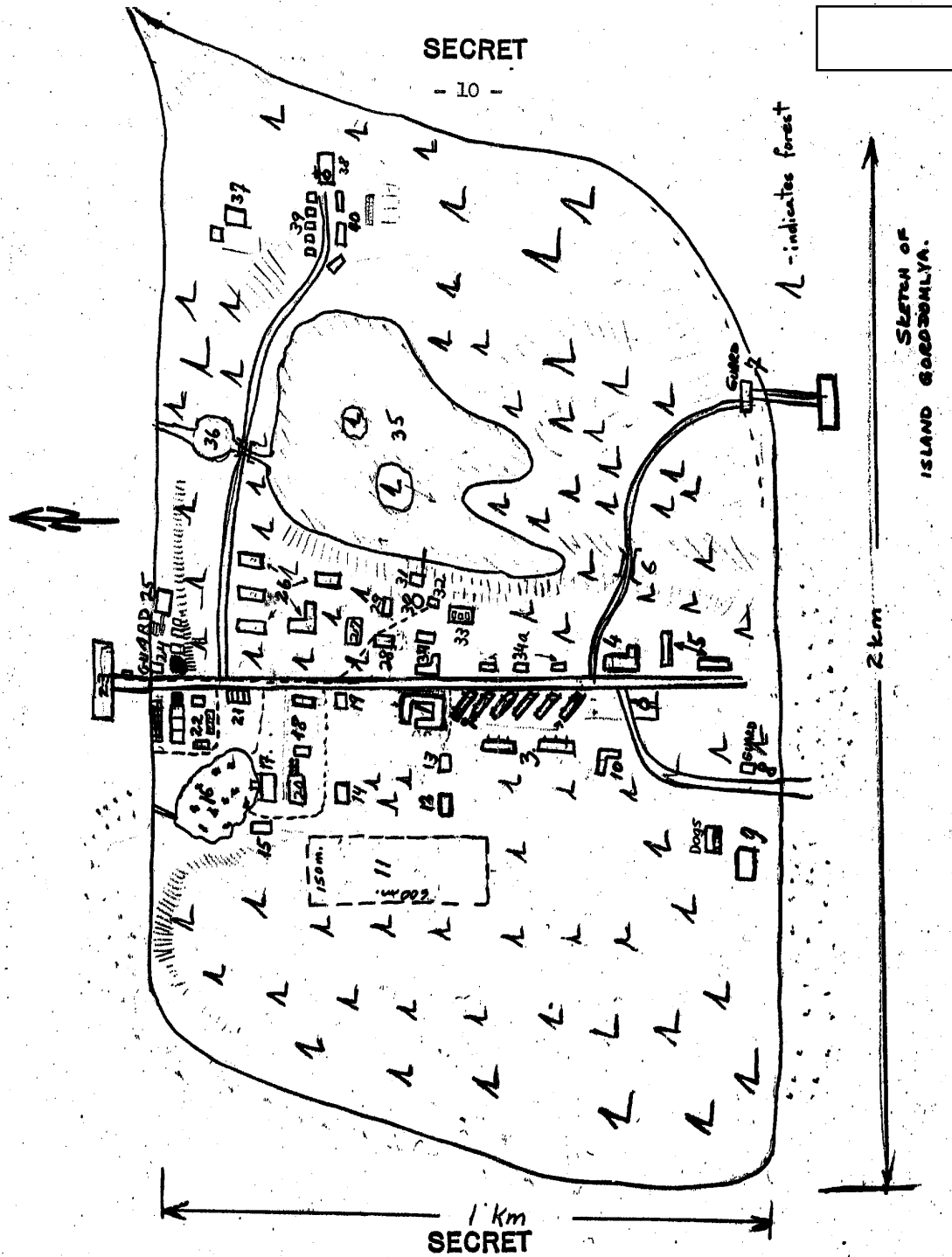


SECRET

25X1A

SECRET

- 10 -



SKETCH OF ISLAND GORDONLIYA.

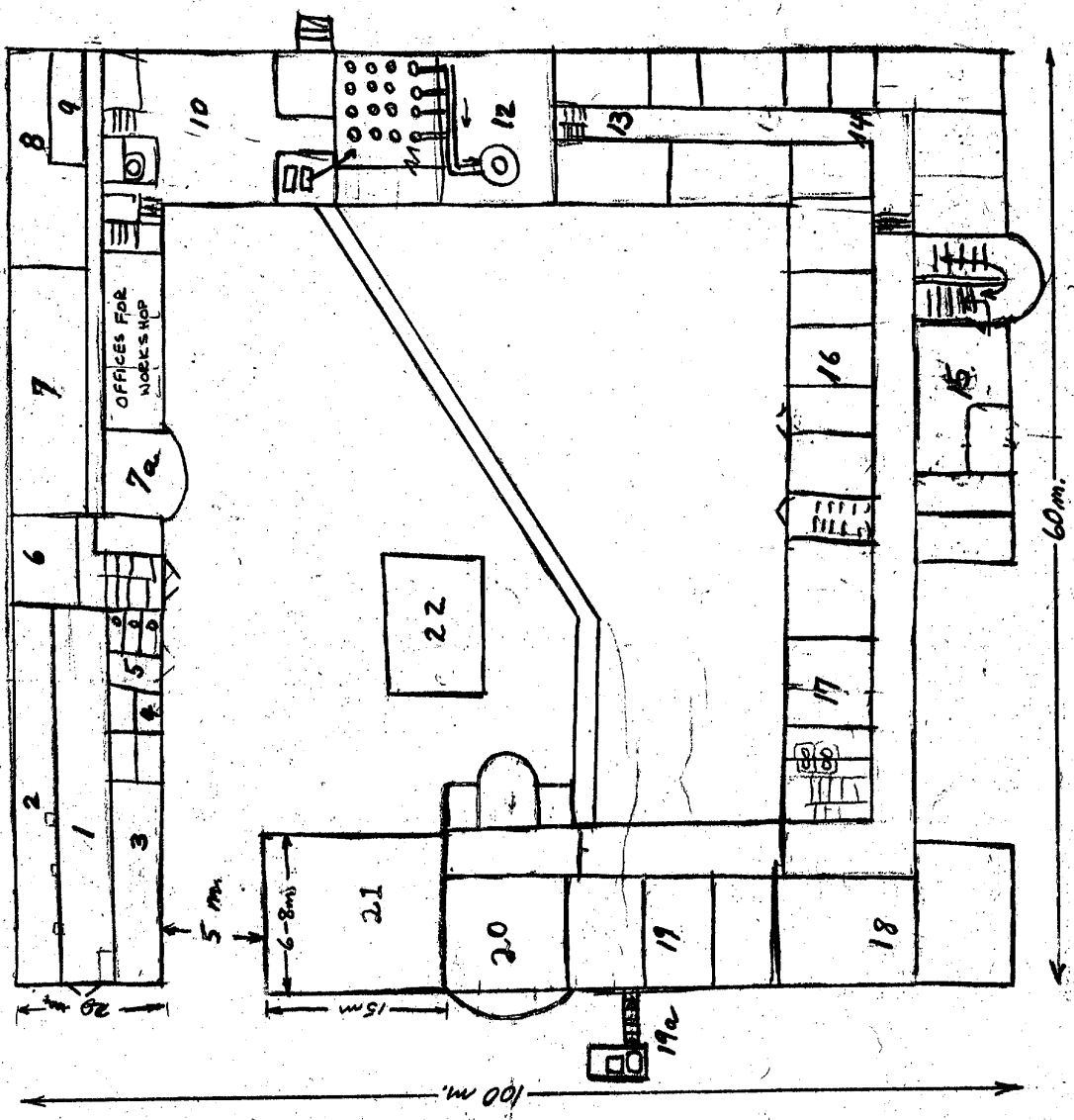
ENCLOSURE (2)

SECRET

25X1A

Approved For Release 2003/08/28 : CIA-RDP80-00810A001100430007-5

PLAN OF MAIN BUILDING
ON ISLAND GORODOMLYA.



SECRET