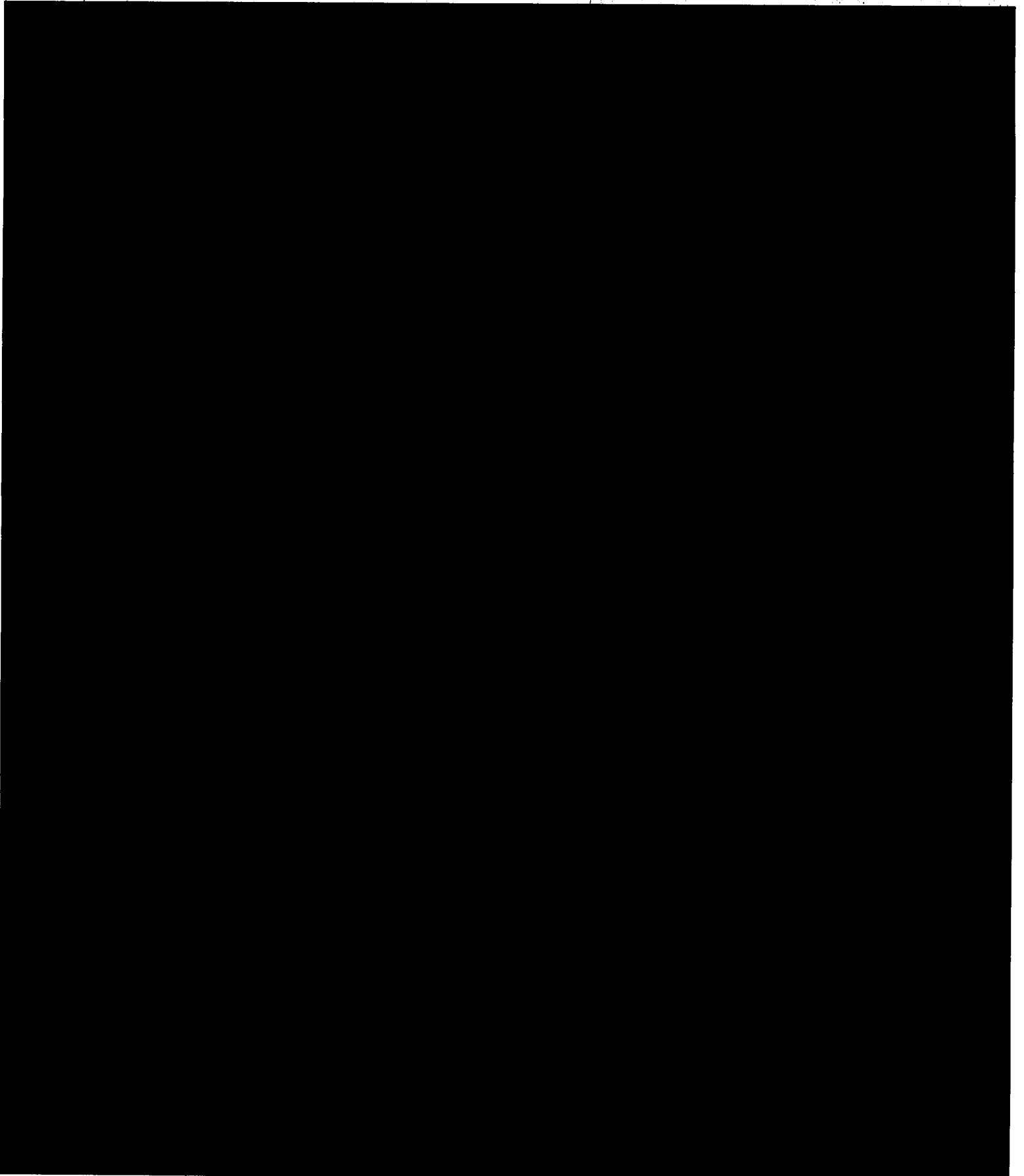


CONFIDENTIAL



~~CONFIDENTIAL~~COPY NO. 5314 February 1946CENTRAL INTELLIGENCE GROUP

25X1A

C.I.G. ADMINISTRATIVE ORDER [REDACTED]ACTIVATION OF THE CENTRAL PLANNING STAFF

1. The Central Planning Staff is hereby constituted and activated in accordance with the attached organization chart. For the present the personnel assigned to this Staff will report directly to the Director of Central Intelligence. At the appropriate time the Director will designate a chief and assistant chief and the heads of the various branches.

2. The functions of the branches of the Central Planning Staff will be as follows:

a. Policy and Review Branch: Formulates policies, recommends objectives and reviews plans required for the accomplishment of the national intelligence mission, including a continuous survey of the functioning of the Central Intelligence Group.

b. Information Branch: Plan for the coordination of all matters affecting the collection of foreign intelligence information.

c. Intelligence Branch: Plan for the coordination of all matters affecting production and dissemination of intelligence relating to the national security.

d. Security Branch: Plan for the coordination of all matters affecting the security of intelligence sources, methods and operations related to the national security.

e. Support Branch: Plan for the coordination of all other unassigned matters and particularly those affecting the adequacy of resources for performing the national intelligence mission.

25X1A

SIDNEY W. SOUERS,

Director.

Encl.: 1 Chart

Distribution:

Intelligence Advisory Board

All [REDACTED] [REDACTED]

Approved [REDACTED]

07/12 : CIA-RDP81-00728R000100050001-8

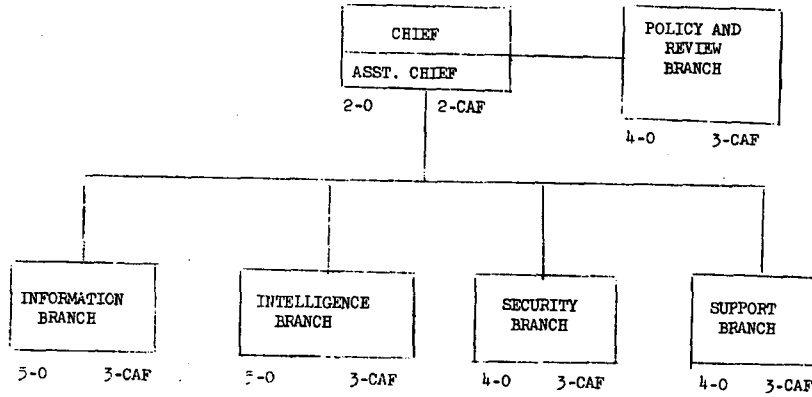
CONFIDENTIAL

Rec'd [REDACTED]

CONFIDENTIAL

14 February 1946

CENTRAL PLANNING STAFF



LEGEND:

0 = Col., Capt., P-8 or 7, CAF-15 or 14, Lt. Col., Cmdr., P-6, CAF-13
CAF = CAF-5

CONFIDENTIALCOPY NO. 3414 February 1946CENTRAL INTELLIGENCE GROUP

25X1A

C.I.G. ADMINISTRATIVE [REDACTED]ACTIVATION OF THE CENTRAL PLANNING STAFF

1. The Central Planning Staff is hereby constituted and activated in accordance with the attached organization chart. For the present the personnel assigned to this Staff will report directly to the Director of Central Intelligence. At the appropriate time the Director will designate a chief and assistant chief and the heads of the various branches.

2. The functions of the branches of the Central Planning Staff will be as follows:

a. Policy and Review Branch: Formulates policies, recommends objectives and reviews plans required for the accomplishment of the national intelligence mission, including a continuous survey of the functioning of the Central Intelligence Group.

b. Information Branch: Plan for the coordination of all matters affecting the collection of foreign intelligence information.

c. Intelligence Branch: Plan for the coordination of all matters affecting production and dissemination of intelligence relating to the national security.

d. Security Branch: Plan for the coordination of all matters affecting the security of intelligence sources, methods and operations related to the national security.

e. Support Branch: Plan for the coordination of all other unassigned matters and particularly those affecting the adequacy of resources for performing the national intelligence mission.

SIDNEY W. SOUERS,

Encl.: 1 Chart.

Director.

Distribution:

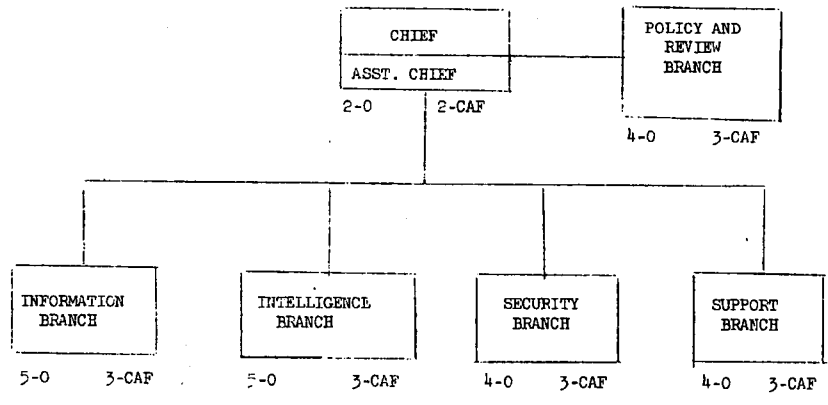
Approved For Release 2001/07/12 : CIA-RDP81-00728R000100050001-8
All C.I.G. Personnel

CONFIDENTIAL

CONFIDENTIAL

14 February 1946

CENTRAL PLANNING STAFF



LEGEND:

C = Col., Capt., P-8 or 7, CAF-15 or 14, Lt. Col., Cmdr., P-6, CAF-13
CAF = CAF-5

CENTRAL INTELLIGENCE GROUP

25X1A

C. I. G. ADMINISTRATIVE [REDACTED]

CONSTITUTION OF THE CENTRAL PLANNING STAFF

1. The Central Planning Staff is hereby constituted and activated in accordance with the attached organization chart. For the present the personnel assigned to this Staff will report directly to the Director of Central Intelligence. At the appropriate time the Director will designate a chief and assistant chief and the heads of the various branches.

2. The functions of the branches of the Central Planning Staff will be as follows:

a. Policy and Review Branch: Formulates policies, recommends objectives and reviews plans required for the accomplishment of the national intelligence mission, including a continuous survey of the functioning of the Central Intelligence Group.

b. Information Branch: Plan for the coordination of all matters affecting the collection of foreign intelligence information.

c. Intelligence Branch: Plan for the coordination of all matters affecting production and dissemination of intelligence relating to the national security.

d. Security Branch: Plan for the coordination of all matters affecting the security of intelligence sources, methods and operations related to the national security.

e. Support Branch: Plan for the coordination of all other unassigned matters and particularly those affecting the adequacy of resources for performing the national intelligence mission.

SIDNEY W. SOUERS,
Director.

Encl: 1 Chart

Distribution:
Intelligence Advisory Board
All C. I. G. Personnel

EFFECTIVE 30 JUNE 1947 CIG ADMINISTRATIVE ORDERS WILL REMAIN IN FORCE UNTIL
CANCELLED OR SUPERSEDED