



PHOTOGRAPHIC INTERPRETATION REPORT

POSTAVY ARMY BARRACKS POSTAVY. USSR BELORUSSIAN MD

APPROVED FOR
RELEASE -
HISTORICAL
COLLECTION
DIVISION HR70-14
DATE: 07-18-2012



CIA



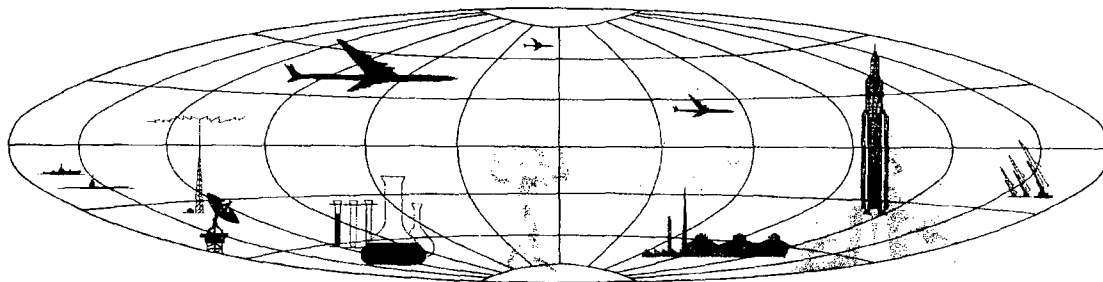
DIA

Handle Via **TALENT - KEYHOLE** Control Only

WARNING

This document contains classified information affecting the national security of the United States within the meaning of the espionage laws U. S. Code Title 18, Sections 793 and 794. The law prohibits its transmission or the revelation of its contents in any manner to an unauthorized person, as well as its use in any manner prejudicial to the safety or interest of the United States or for the benefit of any foreign government to the detriment of the United States. It is to be seen only by personnel especially indoctrinated and authorized to receive TALENT-KEYHOLE information. Its security must be maintained in accordance with KEYHOLE and TALENT regulations.

NATIONAL PHOTOGRAPHIC INTERPRETATION CENTER



~~TOP SECRET~~

GROUP 1
Excluded from automatic
downgrading and declassification

PREFACE

This report is one in a series on Soviet Ground Force and logistic installations being prepared for a DIA/CIA Panel. The series is being coordinated, published and disseminated by NPIC. The photographic analysis is being performed by the NPIC Photographic Analysis Group, the CIA Photographic Intelligence Division (NPIC), and the Production Center 1PIC (DIA). The photographic analysis for this particular report was performed by the NPIC Photographic Analysis Group.

In the interest of uniformity, the titles and letter designators for the facilities observed at these installations are identical with those appearing in the project requirement. When a specific facility is not observed both its title and letter designator are omitted in the report.

Titles and letter designators for the various facilities are as follows: (A) railroad service, (B) road service, (C) landing strips, (D) administrative and troop housing areas, (E) storage areas, (F) ammunition storage areas, (G) POL storage areas, (H) other buildings and facilities, (J) equipment storage/maintenance areas, (K) athletic fields, (L) small arms firing ranges, (M) driver training areas, (N) tank/assault gun firing ranges, (P) flat trajectory firing ranges, (Q) artillery emplacements (batteries), (R) infantry or combined arms field training area or courses, (S) special training facilities, (T) unidentified facilities or tracking activity.

NPIC/R-457/64

POSTAVY ARMY BARRACKS

(55-07N 026-53E)

POSTAVY, MOLODECHNENSKAYA OBLAST, USSR

BELORUSSIAN MD

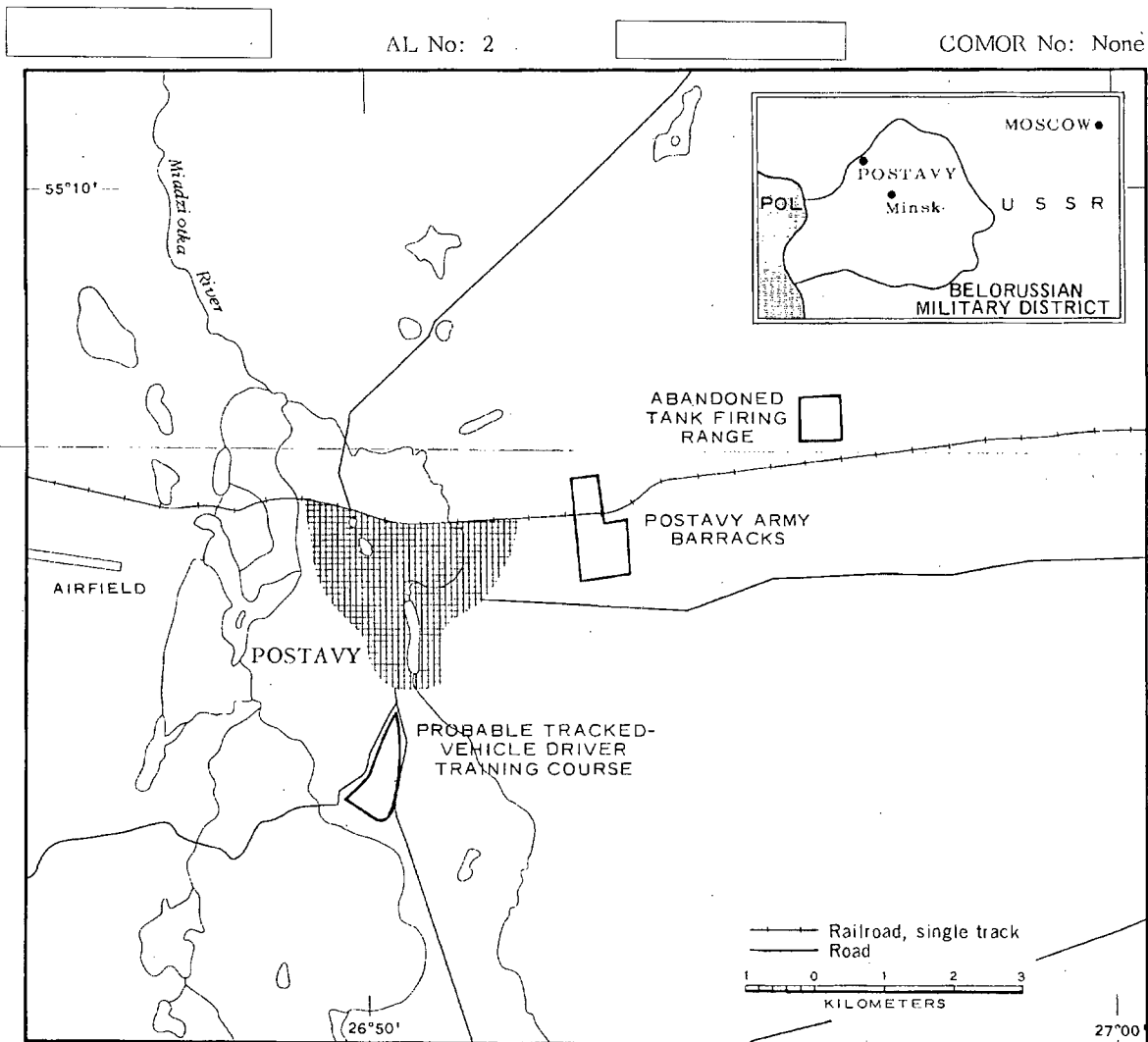


FIGURE 1. LOCATION OF POSTAVY ARMY BARRACKS.

NPIC J-1806 (6/64)

SUMMARY

Postavy Army Barracks is located 3 kilometers (km) east of Postavy (55-07N 026-50E) along the Postavy-Krulevshchina rail line (Figure 1). The installation does not appear to be directly rail served, but a good road leads to a rail siding one km northwest of the installation. Secondary roads connect with Postavy and the all-weather Polotsk-Vilnius highway. An abandoned tank firing range located 4 km northeast and a probable tracked-vehicle driver training course located 5.5 km southwest are associated with this installation. Postavy Army Barracks (AL-3) is located 5 km west.

The installation (Figures 2 and 3) covers approximately 270 acres and contains three administration buildings, 10 barracks, four probable barracks, 27 support buildings, 29 storage

buildings, three possible storage buildings, 41 probable dependent quarters, and two vehicle maintenance areas with 12 vehicle sheds, two maintenance buildings and five support buildings.

The area is covered by 1956 TALENT photography and five KEYHOLE missions between December 1961 and February 1964. Comparative analysis reveals heavy activity in the summer months and reduced activity in the winter months. Significant changes include the addition of 41 probable dependents quarters, eight storage buildings, 12 support buildings, and three vehicle sheds between July 1956 and December 1961. Four additional storage buildings and three possible storage buildings were first observed on July 1963 coverage.

DESCRIPTION OF INSTALLATION

Railroad Service

The single track Postavy-Krulevshchina rail line runs through the north part of the installation. A rail siding is located one km northwest of the barracks area and is directly accessible by a good road.

Road Service

Secondary roads provide access to Postavy and the all-weather Polotsk-Vilnius highway.

Administrative and Troop Housing Areas

Area D1 (Figure 3) has three administration buildings, 10 barracks, and seven support buildings.

Area D2 has four probable barracks.

Track activity indicates both areas are occupied.

General Storage Areas

Area E1 has eight storage buildings. Two of the buildings were added between 1956 and December 1961 and three were added between December 1961 and July 1963.

Area E2 has five storage buildings.

Area E3 has five storage buildings.

Area E4 has three possible storage buildings which were first observed on July 1963 coverage. A security fence was constructed between July 1956 and December 1961.

Other Buildings

There are 15 support buildings and four storage buildings, one of which is secured, dispersed outside designated functional areas. Eleven support buildings were added between July 1956 and December 1961.

NPIC/R-457/64

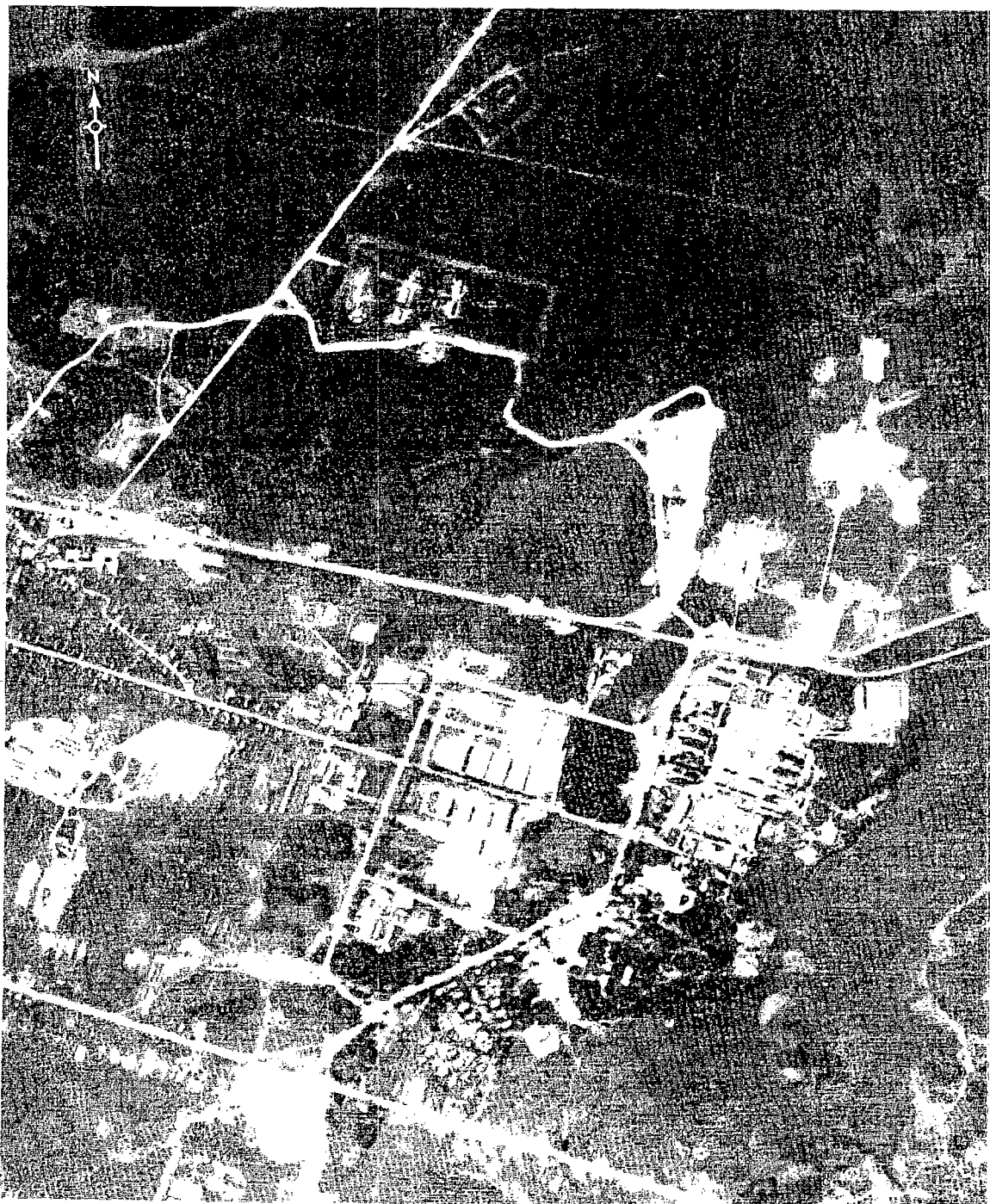


FIGURE 2. POSTAVY ARMY BARRACKS, POSTAVY, USSR, JULY 1963.

NPIC J-1507 16/64

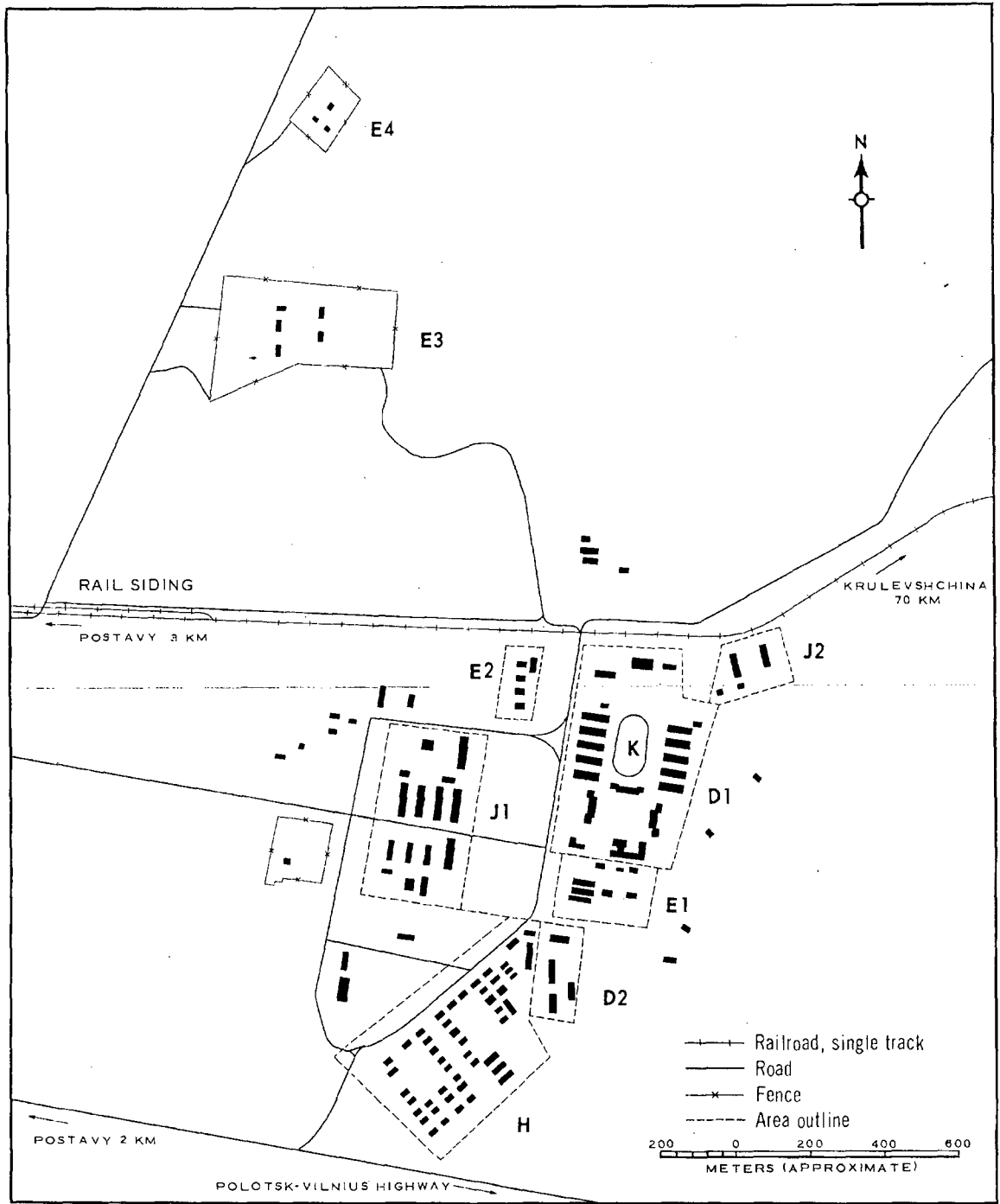


FIGURE 3. POSTAVY ARMY BARRACKS. Sketch compiled from [redacted] February 1964. NPIC J-1508 (6/64)

NPIC/R-457/64

Area H contains 41 probable dependents quarters and seven storage buildings. All buildings were constructed between July 1956 and December 1961 except for one storage building which was added between December 1961 and July 1963.

Equipment Storage/Maintenance Areas

Area J1 has six 230- by 40-foot vehicle sheds, four 145- by 40-foot vehicle sheds, two 70- by 55-foot maintenance buildings, and three support buildings. The two 230- by 40-foot sheds and one of the 145- by 40-foot sheds were added between July 1956 and December 1961.

Area J2 has two 180- by 40-foot vehicle sheds and two support buildings. One of the support buildings was added between July 1956 and December 1961.

Athletic Fields

Area K is an athletic field.

Driver Training Area

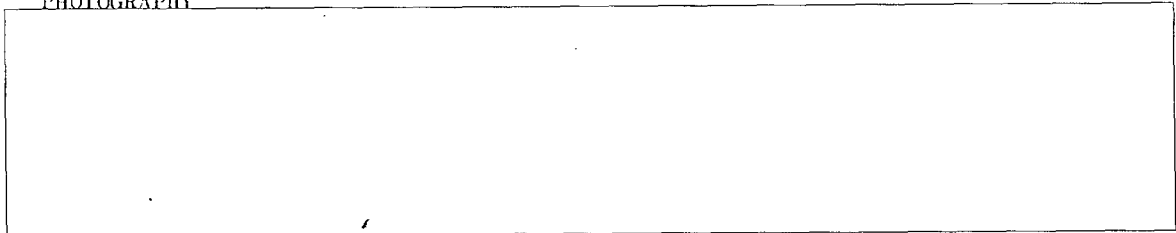
An associated, closed-circuit, probable tracked-vehicle driver training course (not depicted on Figures 2 or 3) is located 5.5 km southwest of the installation. This facility was observed as active on 1956 TALENT photography and all KEYHOLE missions.

Tank/Assault Gun Firing Range

TALENT photography in 1956 revealed a small tank firing range (not depicted on Figures 2 or 3) with five moving target runs, of which two were active, located 4 km northeast of the barracks area. On July 1963 photography, this range appears abandoned.

REFERENCES

PHOTOGRAPHY



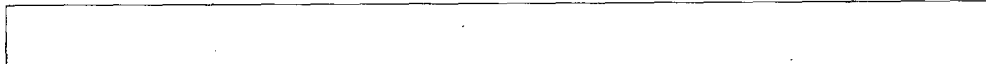
MAPS OR CHARTS

US Air Target Chart, Series 200, Sheet 0168-9HL, 2d ed, Sep 62 (SECRET)

US Air Target Chart, Series 100, Sheet 0168-8652-100, 1st ed, Aug 55 (SECRET)

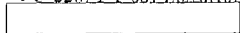
DOCUMENTS

Army. SPIR-23-56, *Area Study, Molodechaenskaya Oblast, USSR*, 18 Jun 58 (TOP SECRET CHESS)



Army. TIB-TK-14-63, *Postary Army Barracks Yunki*, 29 Aug 63 (TOP SECRET RUFF)

DIA. PC-225.1-1-63, *Installations List, Soviet Ground Forces*, 1 Oct 63 (SECRET)



REQUIREMENT

C-RR4 81,111 (partial answer)

NPIC PROJECT

N-236.64

~~TOP SECRET~~

~~TOP SECRET~~