

HR70-14

Copy

05

6 Pages

~~TOP SECRET~~

NPIC/R-468/64

June 1964

PHOTOGRAPHIC INTERPRETATION REPORT

# PETROLEUM STORAGE AREA BREST, USSR BELORUSSIAN MD

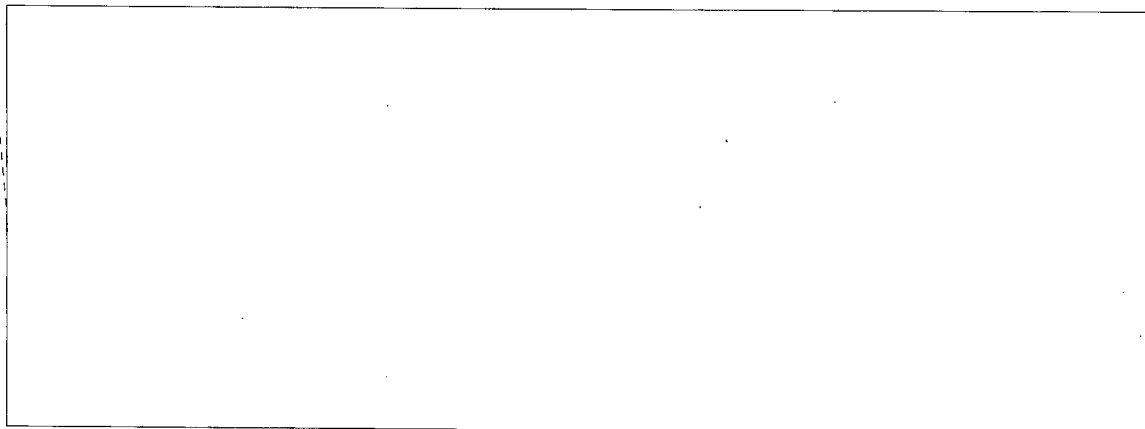
APPROVED FOR  
RELEASE - HISTORICAL  
COLLECTION DIVISION  
HR70-14 DATE:  
07-18-2012



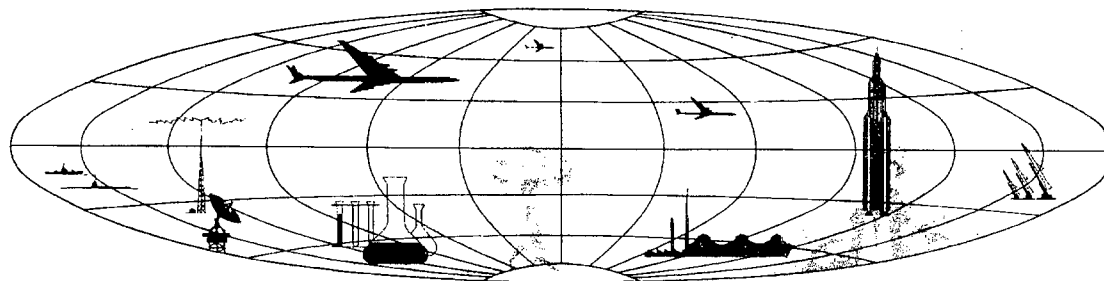
CIA



DIA



NATIONAL PHOTOGRAPHIC INTERPRETATION CENTER



~~TOP SECRET~~

GROUP 1  
Excluded from automatic  
downgrading and declassification

PREFACE

This report is one in a series on Soviet Ground Force and logistic installations being prepared for a DIA/CIA Panel. The series is being coordinated, published and disseminated by NPIC. The photographic analysis is being performed by the NPIC Photographic Analysis Group, the CIA Photographic Intelligence Division (NPIC), and the Production Center IPIC (DIA). The photographic analysis for this particular report was performed by the NPIC Photographic Analysis Group.

In the interest of uniformity, the titles and letter designators for the facilities observed at these installations are identical with those appearing in the project requirement. When a specific facility is not observed both its title and letter designator are omitted in the report.

Titles and letter designators for the various facilities are as follows: (A) railroad service, (B) road service, (C) landing strips, (D) administrative and troop housing areas, (E) storage areas, (F) ammunition storage areas, (G) POL storage areas, (H) other buildings and facilities, (J) equipment storage/maintenance areas, (K) athletic fields, (L) small arms firing ranges, (M) driver training areas, (N) tank/assault gun firing ranges, (P) flat trajectory firing ranges, (Q) artillery emplacements (batteries), (R) infantry or combined arms field training area or courses, (S) special training facilities, (T) unidentified facilities or tracking activity.

NPIC/R-468/64

PETROLEUM STORAGE AREA

(52-14N 023-32E)

BREST, BRESTSKAYA OBLAST, USSR

BELORUSSIAN MD

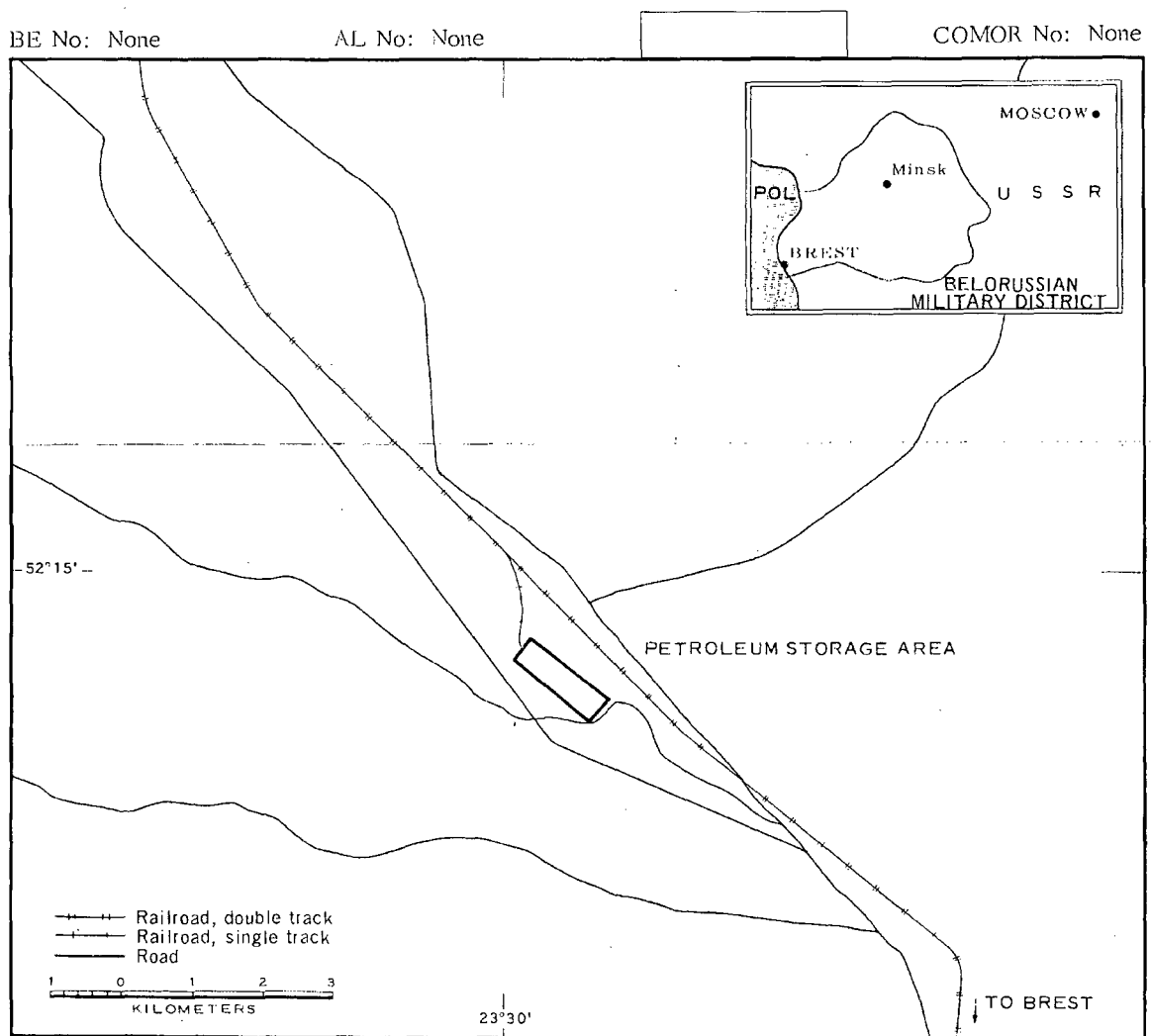


FIGURE 1. LOCATION OF PETROLEUM STORAGE AREA, BREST.

NPIC J-1578 (6/64)

**SUMMARY**

A petroleum storage area, secured by a double fence, is located 18 kilometers (km) north-northwest of Brest, south of the Brest-Czeremcha rail line (Figure 1). The installation is served by a spur from the rail line and has all-weather road access to the Brest-Czeremcha highway. Brest Army Barracks Central (AL-1) is located 17 km south. Other military installations are located in Brest.

The installation covers approximately 70 acres and includes 15 semiburied, vertical storage tanks, 100 horizontal storage tanks, one administration building and five support buildings (Figures 2 and 3).

The area was covered by ten KEYHOLE missions between December 1961 and April 1964. Comparative analysis reveals the same general level of usage during this period.

**DESCRIPTION OF INSTALLATION**

**Railroad Service**

A spur from the double-track Brest-Czeremcha rail line forms four subspurs to serve the storage area. The presence of trackside docks and loading docks is undetermined.

**Road Service**

An all-weather road provides access to the Brest-Czeremcha highway.

**Administrative and Troop Housing Area**

Area D (Figure 3) contains one administration building and two support buildings.

**POL Storage Areas**

Area G1 contains 15 vertical semiburied

tanks 110 feet in diameter and 60 horizontal tanks

The horizontal tanks are arranged in three rows with four groups per row and five tanks per group. Heavy tree foliage obscures possible presence of additional tanks.

Area G2 contains 40 horizontal tanks of undetermined dimensions in eight groups of five each.

Six rail tank cars are visible in the installation on April 1964 coverage.

**Other Buildings**

Area H contains three support buildings located outside the secured area.

NPIC/R-468/64

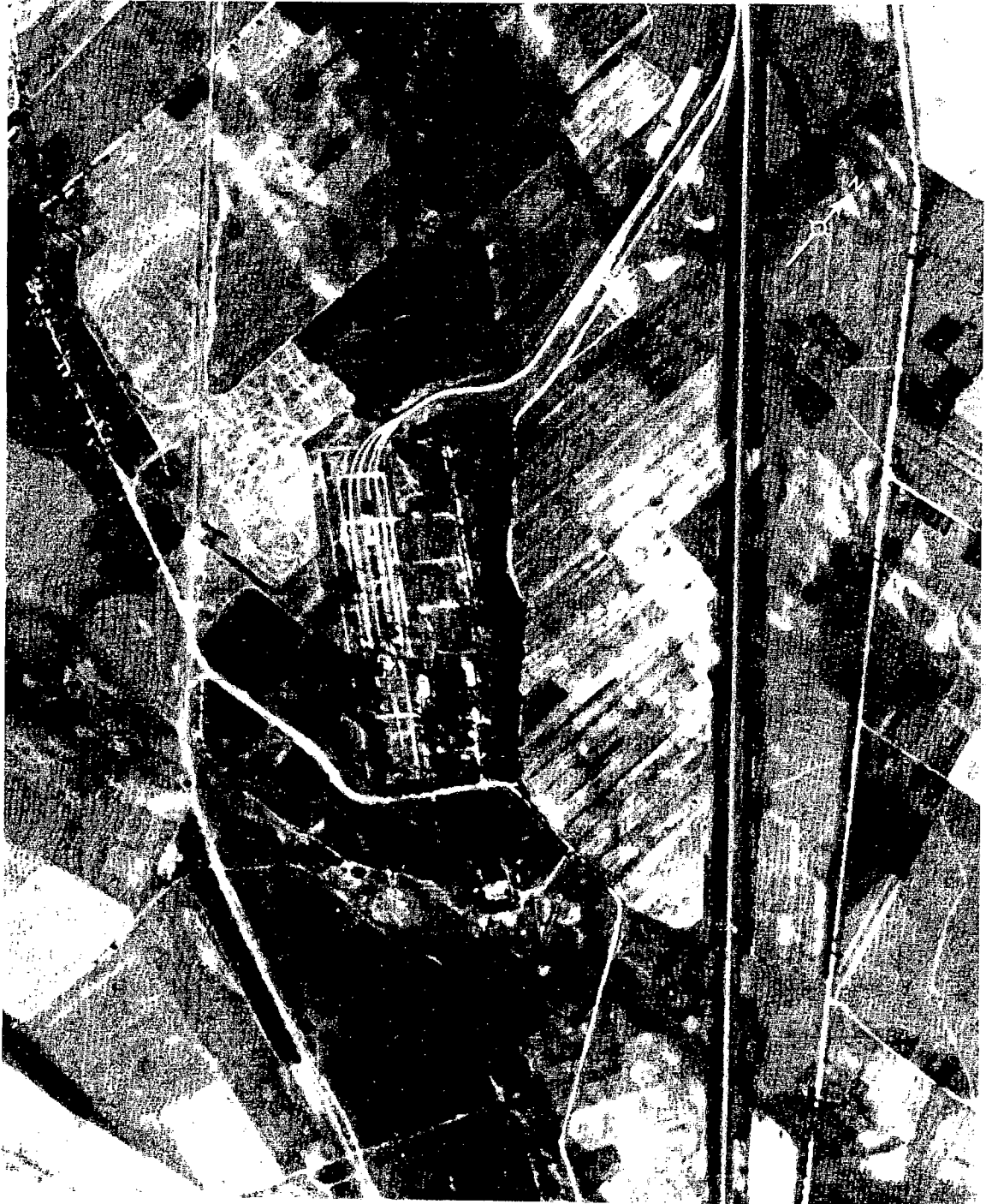


FIGURE 2. PETROLEUM STORAGE AREA, BREST, USSR, JULY 1963.

NPIC J-1579 (6/64)

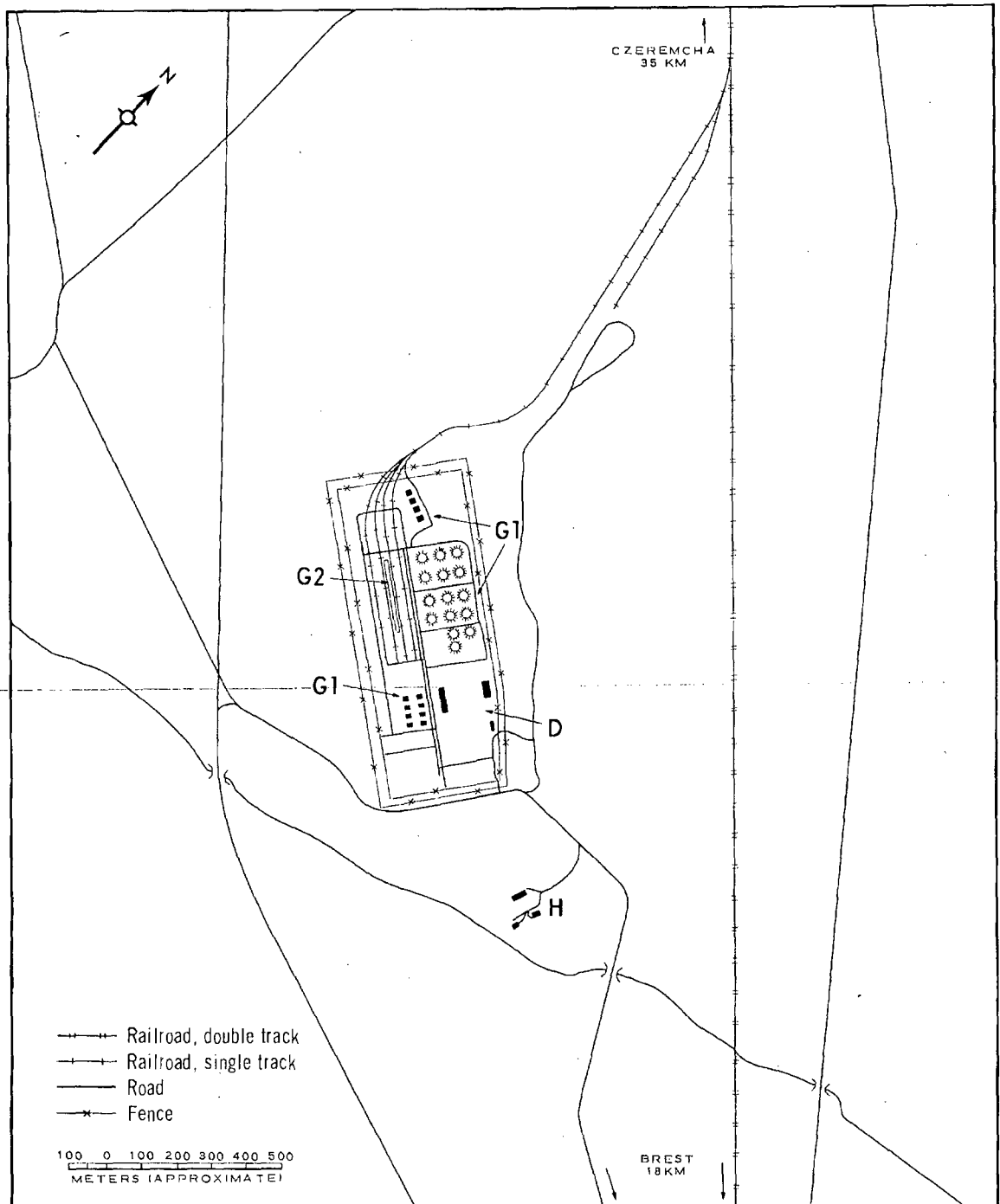
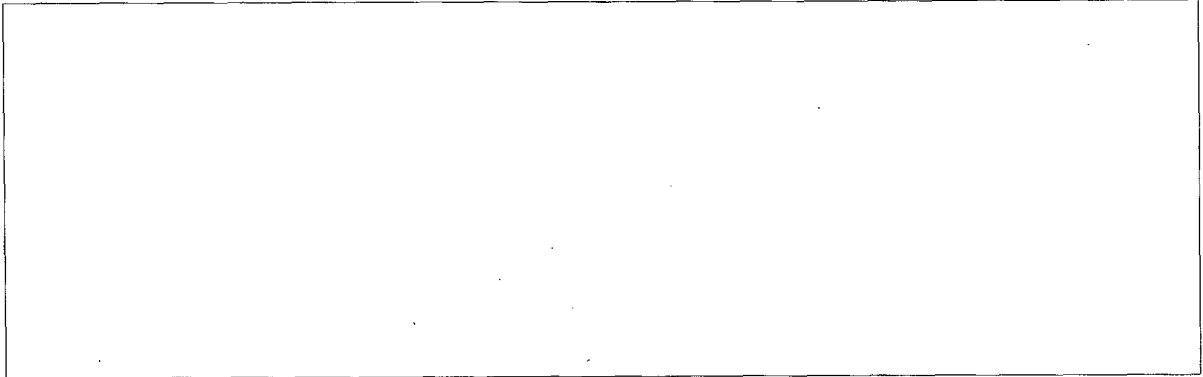


FIGURE 3. PETROLEUM STORAGE AREA, BREST. Sketch compiled from [ ] July 1963 and from [ ] April 1964.

NPIC/R-468/64

REFERENCES

PHOTOGRAPHY



MAPS OR CHARTS

US Air Target Chart, Series 200, Sheet 0168-22HL, 2d ed, Feb 63 (SECRET)

US Air Target Chart, Series 100, Sheet 0168-9988-100A, 1st ed, Aug 55 (SECRET)

DOCUMENTS

DIA. PC-225-1-1-63, *Installation List, Soviet Ground Forces*, 1 Oct 63 (SECRET)

REQUIREMENT

C-RR4-81,111 (partial answer)

NPIC PROJECT

N-236,64

~~TOP SECRET~~

~~TOP SECRET~~