

HR70-14

NPIC/R-519/64

July 1964

~~TOP SECRET~~

TCS-7250/64

Copy 208

6 Pages

PHOTOGRAPHIC INTERPRETATION REPORT

SLUTSK ARMY BARRACKS CENTRAL SLUTSK, USSR BELORUSSIAN MD

APPROVED FOR
RELEASE - HISTORICAL
COLLECTION DIVISION
HR70-14 DATE: 07-18-2012



CIA



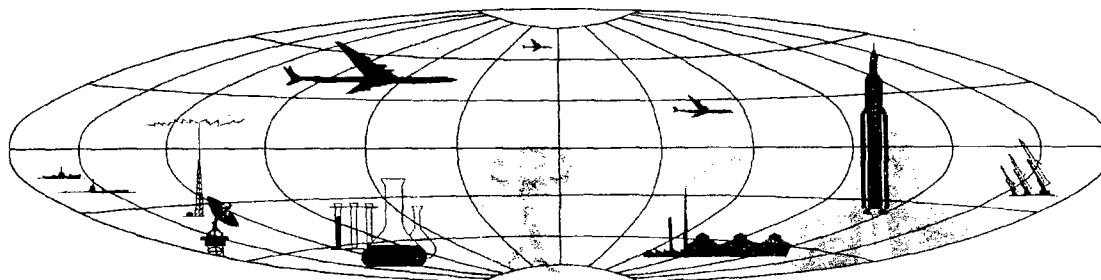
DIA

Handle Via **TALENT - KEYHOLE** Control Only

WARNING

This document contains classified information affecting the national security of the United States within the meaning of the espionage laws U. S. Code Title 18, Sections 793 and 794. The law prohibits its transmission or the revelation of its contents in any manner to an unauthorized person, as well as its use in any manner prejudicial to the safety or interest of the United States or for the benefit of any foreign government to the detriment of the United States. It is to be seen only by personnel especially indoctrinated and authorized to receive TALENT-KEYHOLE information. Its security must be maintained in accordance with KEYHOLE and TALENT regulations.

NATIONAL PHOTOGRAPHIC INTERPRETATION CENTER



~~TOP SECRET~~

GROUP 1
Excluded from automatic
downgrading and declassification

PREFACE

This report is one in a series on Soviet Ground Force and logistic installations being prepared for a DIA/CIA Panel. The series is being coordinated, published and disseminated by NPIC. The photographic analysis is being performed by the NPIC Photographic Analysis Group, the CIA Photographic Intelligence Division (NPIC), and the Production Center 1P1c (DIA). The photographic analysis for this particular report was performed by the NPIC Photographic Analysis Group.

In the interest of uniformity, the titles and letter designators for the facilities observed at these installations are identical with those appearing in the project requirement. When a specific facility is not observed both its title and letter designator are omitted in the report.

Titles and letter designators for the various facilities are as follows: (A) railroad service, (B) road service, (C) landing strips, (D) administrative and troop housing areas, (E) storage areas, (F) ammunition storage areas, (G) POL storage areas, (H) other buildings and facilities, (J) equipment storage/maintenance areas, (K) athletic fields, (L) small arms firing ranges, (M) driver training areas, (N) tank/assault gun firing ranges, (P) flat trajectory firing ranges, (Q) artillery emplacements (batteries), (R) infantry or combined arms field training area or courses, (S) special training facilities, (T) unidentified facilities or tracking activity.

SLUTSK ARMY BARRACKS CENTRAL
(53-01N 027-34E)
SLUTSK, MINSKAYA OBLAST, USSR
BELORUSSIAN MD

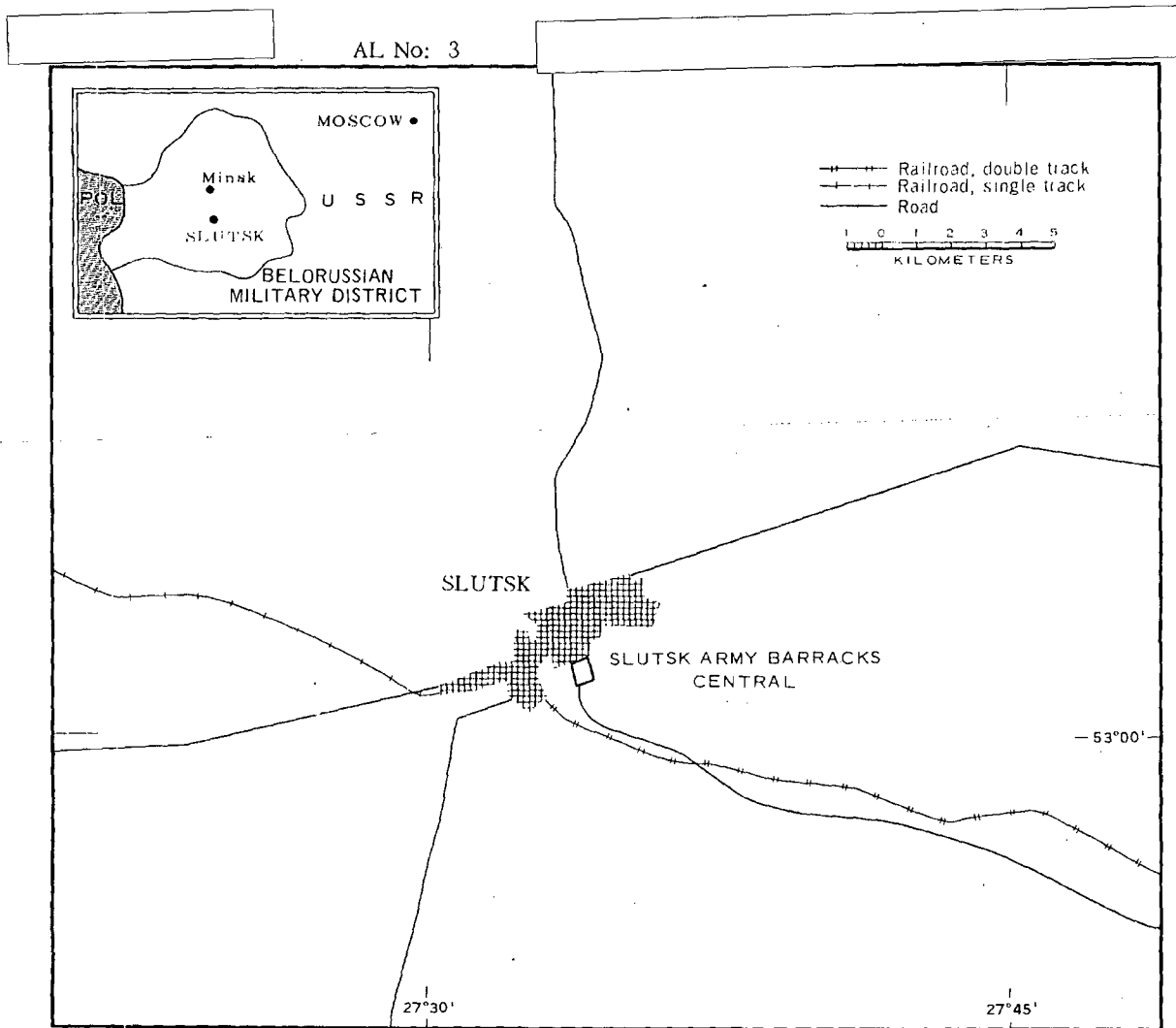


FIGURE 1. LOCATION OF SLUTSK ARMY BARRACKS CENTRAL.

NPIC J-1968 (7/64)

SUMMARY

Slutsk Army Barracks Central is located on the south edge of Slutsk (53-02N 027-34E) east of the Slutsk-Urechye highway (Figure 1). The installation is not rail served. Four other military installations are located in Slutsk, one of which is Slutsk Army Barracks South located 2 kilometers (km) southeast.

The installation (Figures 2 and 3) covers approximately 110 acres and contains one administration building, one large multistory barracks, two single-story barracks, 20 dependent quarters, 23 storage buildings, two vehicle/

maintenance buildings, and 15 support buildings. The installation also includes a small arms firing range, an athletic field, and a parade ground.

The area is covered by 1956 TALENT photography in which poor image quality precludes detailed interpretation and eight KEYHOLE missions between August 1961 and December 1963. Comparative analysis reveals the same general level of usage between August 1961 and December 1963. No significant changes are observed.

DESCRIPTION OF INSTALLATION

Railroad Service

The installation is not rail served. The Slutsk-Urechye rail line passes 1.5 km south of the area.

Road Service

The installation is served by the adjacent Slutsk-Urechye highway.

Administrative and Troop Housing Area

Area D (Figure 3) contains one administration building, one multistory barracks, two single-story barracks, and eight support buildings. Track activity indicates the area is in use.

General Storage Areas

Area E1 contains four storage buildings, and Area E2 contains 19 storage buildings. Track activity indicates probable use of all buildings.

Other Buildings

Area H has 20 dependent quarters. Five support buildings are scattered throughout the installation.

Equipment Storage/Maintenance Area

Area J contains two vehicle/maintenance buildings, measuring 310 by 65 feet and 230 by 50 feet, and two support buildings. July 1963 coverage shows possible equipment/vehicles in the area.

Athletic Fields

Area K1 is a parade ground. Track activity indicates moderate use of this area. Area K2 is an athletic field.

Small Arms Firing Range

Area L is a 350- by 100-foot small arms firing range which is visible only on snow-covered photography.

Handle Via
TALENT-KEYHOLE
Control System Only

TCS-7250/64
NPIC/R-519/64

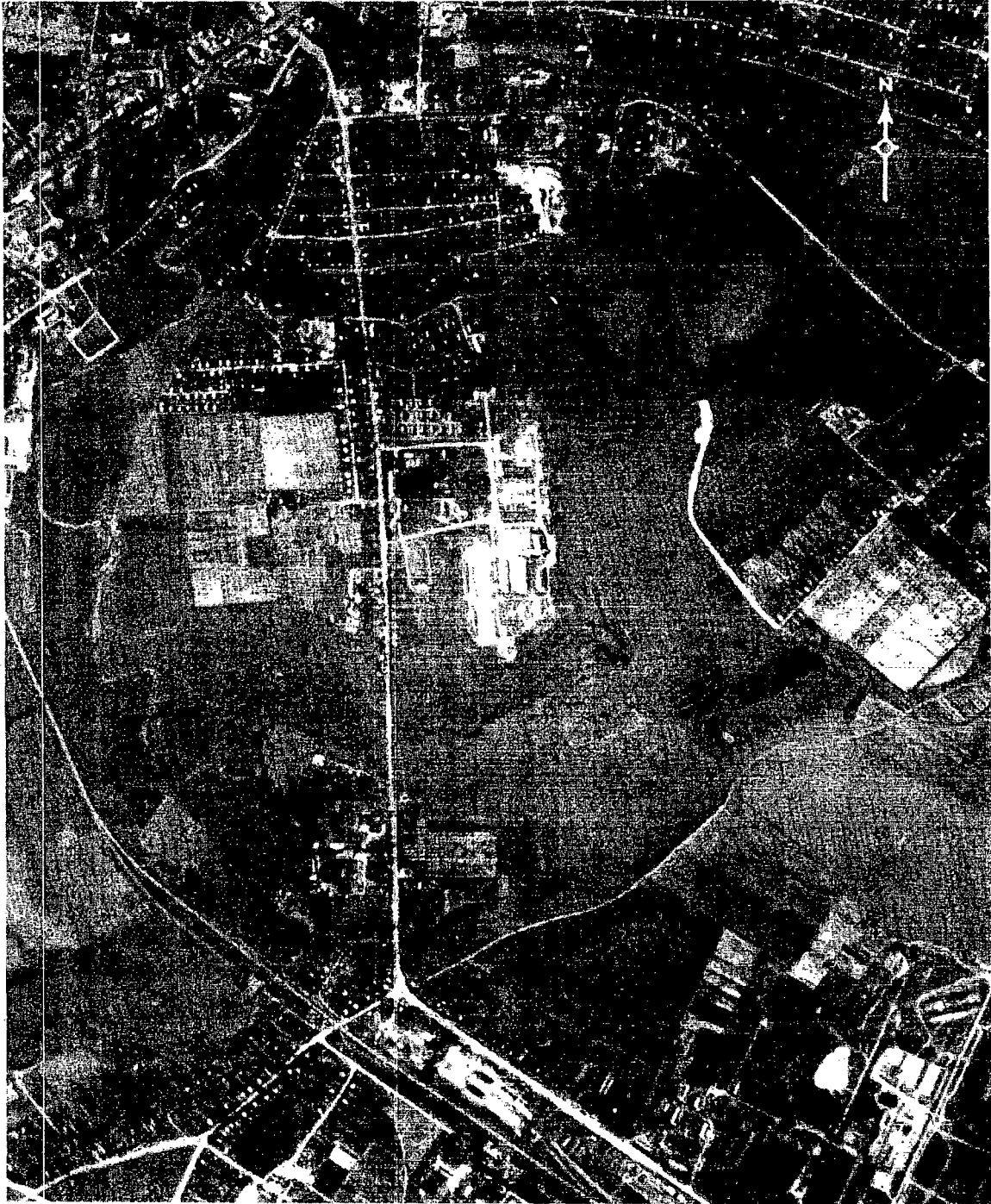


FIGURE 2. SLUTSK ARMY BARRACKS CENTRAL, SLUTSK, USSR, JULY 1963.

SIIC-1349-17243

Handle Via
TALENT-KEYHOLE
Control System Only

Handle Via
TALENT-KEYHOLE
Control System Only

TCS-7250/64
NPIC/R-519/64

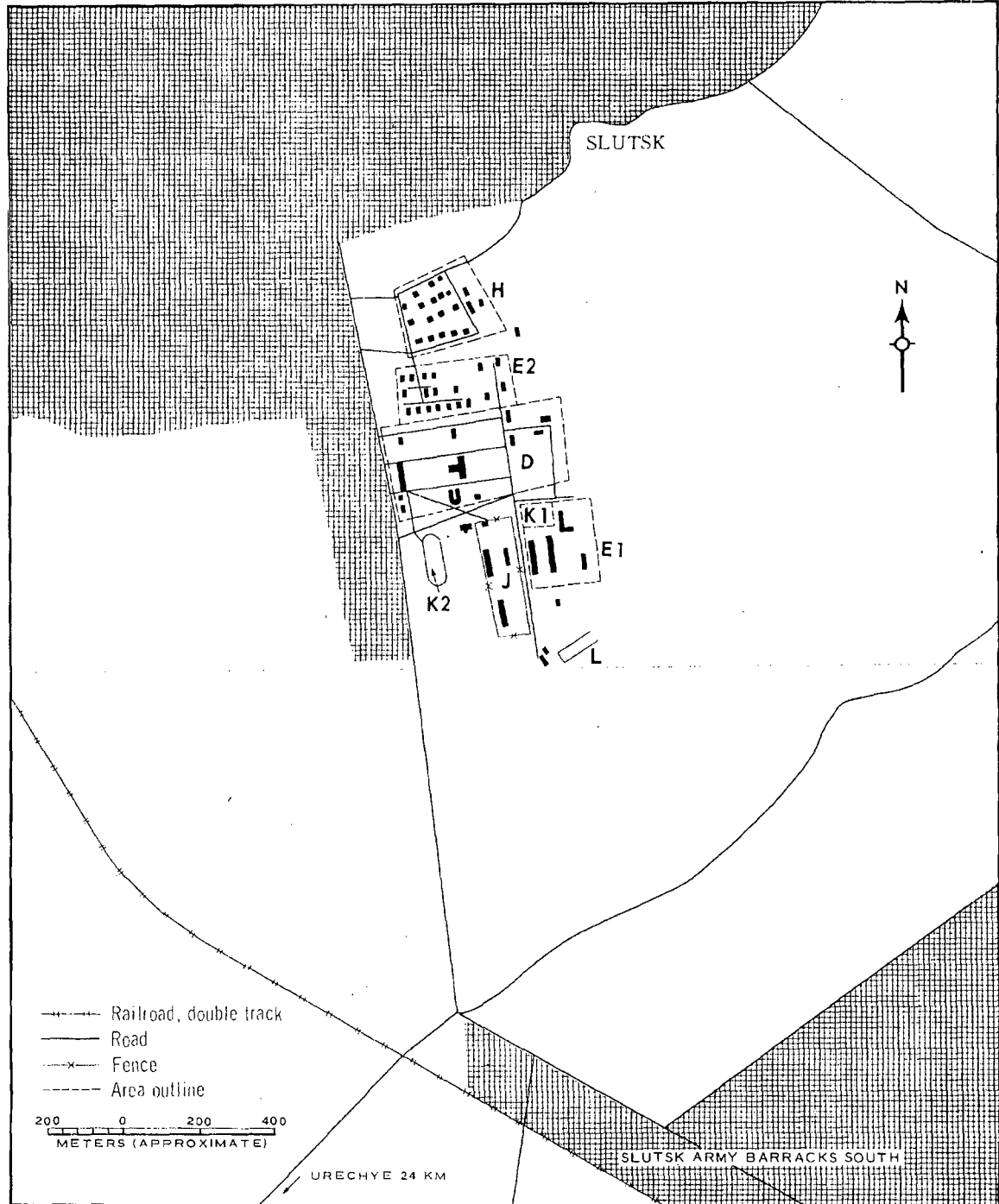


FIGURE 3. SLUTSK ARMY BARRACKS CENTRAL. Sketch compiled from [redacted] July 1963.

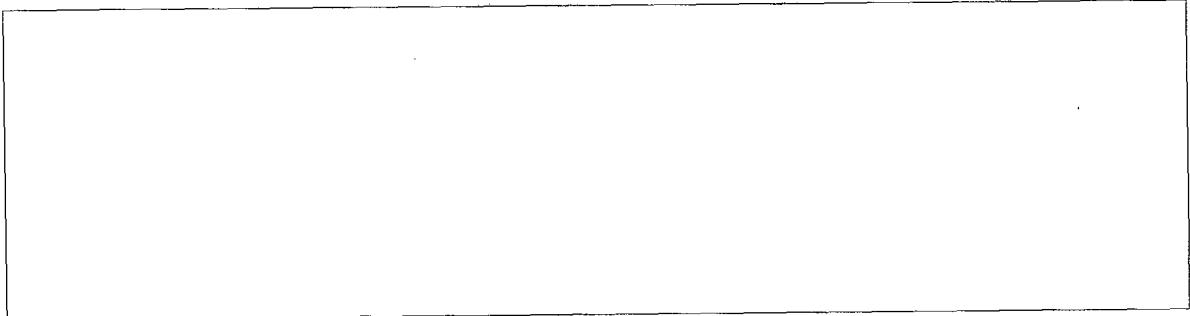
Handle Via
TALENT-KEYHOLE
Control System Only

Handle Via
TALENT-KEYHOLE
Control System Only

TCS-7250/64
NPIC/R-519/64

REFERENCES

PHOTOGRAPHY



MAPS OR CHARTS

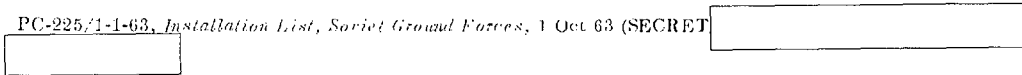
US Air Target Chart, Series 200, Sheet 0168-19HL, 2d ed, Dec 62 (SECRET)

US Air Target Mosaic, Series 25, Sheet 0168-9826-0-25MA, 1st ed, Mar 57 (CONFIDENTIAL)

DOCUMENTS

ARMY. PIB-TK-20-63, *Slutsk Military Complex*, 18 Mar 63 (TOP SECRET RUFF)

DIA. PC-225/1-1-63, *Installation List, Soviet Ground Forces*, 1 Oct 63 (SECRET)



REQUIREMENT

C-RR4-81,111 (partial answer)

NPIC PROJECT

N-236/64

Handle Via
TALENT-KEYHOLE
Control System Only

~~TOP SECRET~~

~~TOP SECRET~~