

HR70-14

~~TOP SECRET~~

Copy 105

9 Pages

NPIC/R-479/64

July 1964



PHOTOGRAPHIC INTERPRETATION REPORT

# BORISOV ARMY BARRACKS SOUTH

## BORISOV, USSR

## BELORUSSIAN MD

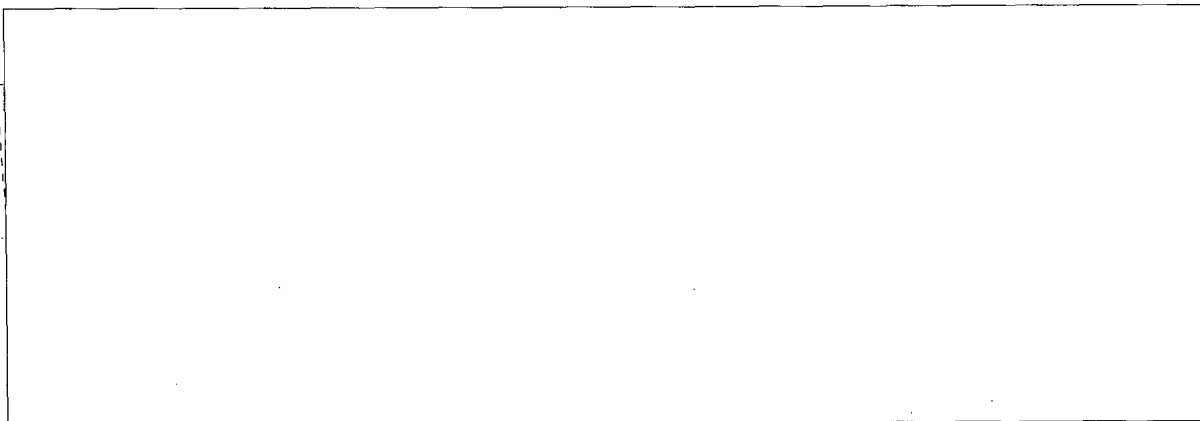
APPROVED FOR  
RELEASE - HISTORICAL  
COLLECTION DIVISION  
HR70-14 DATE: 07-18-2012



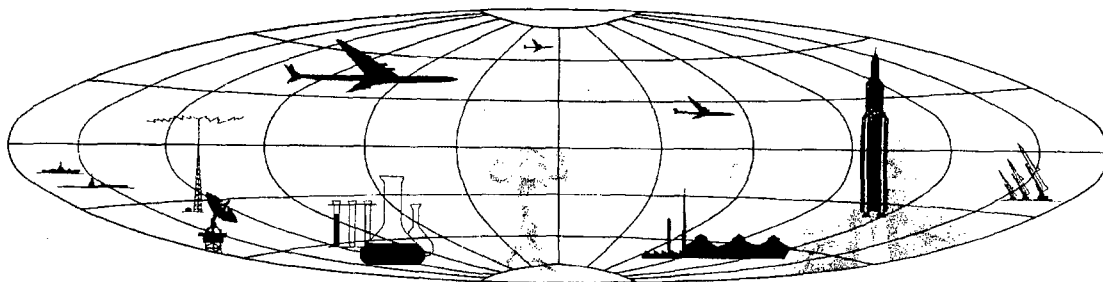
CIA



DIA



NATIONAL PHOTOGRAPHIC INTERPRETATION CENTER



~~TOP SECRET~~

GROUP 1  
Excluded from automatic  
downgrading and declassification

**PREFACE**

This report is one in a series on Soviet Ground Force and logistic installations being prepared for a DIA/CIA Panel. The series is being coordinated, published and disseminated by NPIC. The photographic analysis is being performed by the NPIC Photographic Analysis Group, the CIA Photographic Intelligence Division (NPIC), and the Production Center 1P1c (DIA). The photographic analysis for this particular report was performed by the NPIC Photographic Analysis Group.

In the interest of uniformity, the titles and letter designators for the facilities observed at these installations are identical with those appearing in the project requirement. When a specific facility is not observed both its title and letter designator are omitted in the report.

Titles and letter designators for the various facilities are as follows: (A) railroad service, (B) road service, (C) landing strips, (D) administrative and troop housing areas, (E) storage areas, (F) ammunition storage areas, (G) POL storage areas, (H) other buildings and facilities, (J) equipment storage/maintenance areas, (K) athletic fields, (L) small arms firing ranges, (M) driver training areas, (N) tank/assault gun firing ranges, (P) flat trajectory firing ranges, (Q) artillery emplacements (batteries), (R) infantry or combined arms field training area or courses, (S) special training facilities, (T) unidentified facilities or tracking activity.

NPIC/R-479/64

**BORISOV ARMY BARRACKS SOUTH**  
**(54-10N 028-29E)**  
**BORISOV, MINSKAYA OBLAST, USSR**  
**BELORUSSIAN MD**

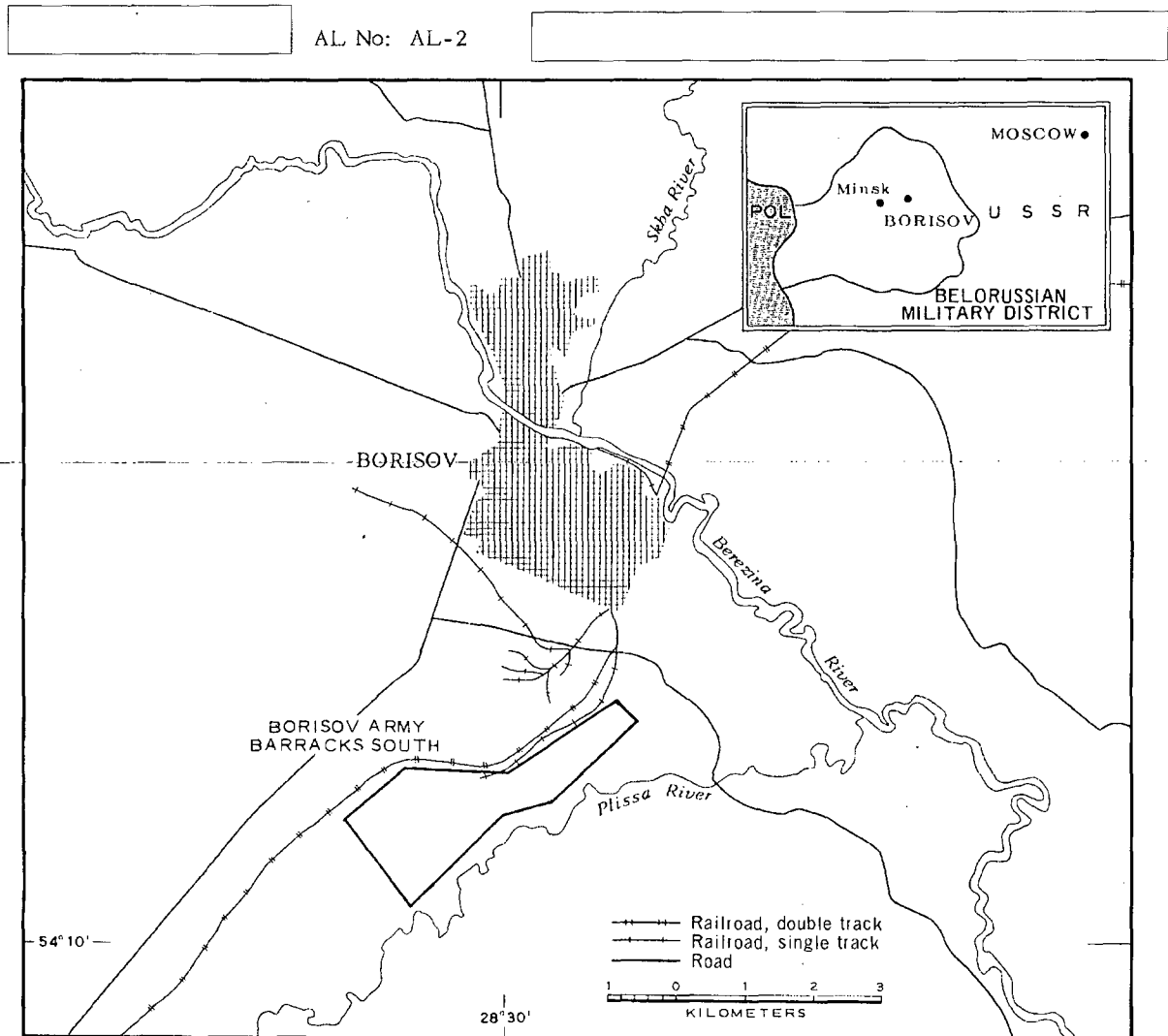


FIGURE 1. LOCATION OF BORISOV ARMY BARRACKS SOUTH.

NPIC J-1600 (7/84)

**SUMMARY**

Borisov Army Barracks South is located 2.5 kilometers (km) south of Borisov (54-13N 028-30E) on the south side of the Borisov-Minsk rail line (Figure 1). It is served by spurs from the Minsk-Borisov rail line and has all-weather road connections to the Borisov-Minsk highway. A military training area (TA-2) adjoins the installation to the south. Borisov Army Barracks and maneuver Area West (AL-1 and TA-1) is located approximately 3 km north. A direct road connection leads from Borisov Army Barracks South to the barracks and maneuver area.

The installation (Figures 2 and 3) covers approximately 1,200 acres and contains seven administration buildings, 23 barracks, 31 storage buildings, 118 support buildings, 44 officer and dependent quarters, and three vehicle storage/maintenance areas containing a total of 10 storage/maintenance buildings. An additional eight vehicle or equipment maintenance buildings can be identified at various locations in the installation.

The installation also includes a secured ammunition storage area with 10 unrevetted buildings, a POL storage area with six tanks, and two athletic fields. Training facilities within the installation include six small arms ranges, a probable wheeled-vehicle driver training course, and a wheeled/tracked vehicle training area.

The area was covered by TALENT photography in 1956 and nine KEYHOLE missions between August 1961 and February 1964. Comparative analysis revealed the same general level of usage between August 1961 and February 1964 with reduced usage during the winter months. Significant changes since 1956 include the addition of six large vehicle storage/maintenance buildings, three large storage buildings, one large ammunition storage building, and 29 dependent quarters. Aside from one of the storage buildings not present in April 1962, all of the buildings were erected between 1956 and 1962.

**DESCRIPTION OF INSTALLATION**

**Railroad Service**

A spur from the double-track Borisov-Minsk rail line divides into three tracks, one serving the POL area and one serving an unidentified area in the northeast section of the installation. The third spur which extended to the southwest section of the installation in 1956 now can be traced only as far as the barracks area.

**Road Service**

A probable all-weather secondary road connects with the Borisov-Minsk highway.

**Aircraft Landing Strips**

A 1,600-foot sod airstrip was identified in the 3,775-foot athletic field on 1956 TALENT photography.

**Administrative and Troop Housing Areas**

Area D1 (Figure 3) contains one administration building, 10 barracks and nine support buildings.

Area D2 contains three administration buildings, 11 barracks, 17 support buildings, and two storage buildings.

Area D3 contains one administration build-

NPIC/R-479/64

ing and two barracks.

Area D4 contains two administration buildings.

Consistent track activity throughout the installation indicates probable occupancy of all the buildings.

#### **General Storage Areas**

Area E1 contains 12 storage buildings and one support building located near rail sidings.

Area E2 contains 11 storage buildings (served by a rail spur which was apparent on 1956 TALENT photography but not apparent on KEYHOLE photography). Three of these buildings were added since 1956.

Area E3 contains six storage buildings and is located near a motor pool.

#### **Ammunition Storage Area**

This secured ammunition storage area (F) contains seven 65- by 50-foot buildings, one 45- by 30-foot building and two 170- by 40-foot buildings (one building added between 1956 and 1962). Track activity has remained at the same level, indicating occupancy of the buildings.

#### **POL Storage Area**

Area G contains six tanks 44 feet in diameter (dimensions from 1956 TALENT photography) and 2 support buildings. A rail spur under construction in 1956 appeared complete in 1962.

#### **Other Buildings**

Seventy-nine support buildings are scattered throughout the area. Ten multistory officer and dependent quarters (one added since 1956), five officers' quarters, and 29 dependents' quarters (all added since 1956) are located in the west section of the installation.

#### **Equipment Storage/Maintenance Areas**

Area J1 contains six 190- by 40-foot storage/maintenance buildings (four added between 1956 and 1962), one 160- by 30-foot and

one 120- by 40-foot storage/maintenance building, and eight support buildings. Two 210- by 160-foot vehicle parks, apparently occupied, were observed in 1964. Track activity extends from Area J1 to Borisov Training Area 2. No change noted in the level of track activity.

Area J2 contains two 150- by 55-foot storage/maintenance buildings, possibly associated with the 430- by 80-foot vehicle park located about 500 yards north. Trackage pattern indicating occupancy and usage in 1963 has shown no change.

Area J3 contains one 160- by 40-foot storage/maintenance building, and was identified on 1956 TALENT photography as a vehicle maintenance area. No change has been observed in the general level of track activity.

Area J4 contains three 165- by 50-foot storage/maintenance buildings (two added between 1956 and 1962), one 105- by 20-foot and one 85- by 20-foot storage/maintenance building, and two support buildings. The area was identified as a vehicle maintenance area on 1956 TALENT photography. No change is noted in the general level of track activity.

Area J5 contains two 150- by 50-foot storage/maintenance buildings. An approximately 100- by 30-foot area adjacent to one building was probably fenced between 1956 and 1962. Area J5 was identified as a vehicle repair center on 1956 TALENT photography.

#### **Athletic Fields**

The installation contains two athletic fields, K, 3,775 feet and 1,070 feet in circumference, and both apparently in use in 1963.

#### **Small Arms Firing Ranges**

The following revetted small arms firing ranges were observed: L1, 780 by 110 feet; L2, 370 by 80 feet; L3, 330 by 60 feet; L4, 350 by 50 feet; L5, 300 by 30 feet; and L6, 630 by 100 feet. Scarring indicates use of all ranges.

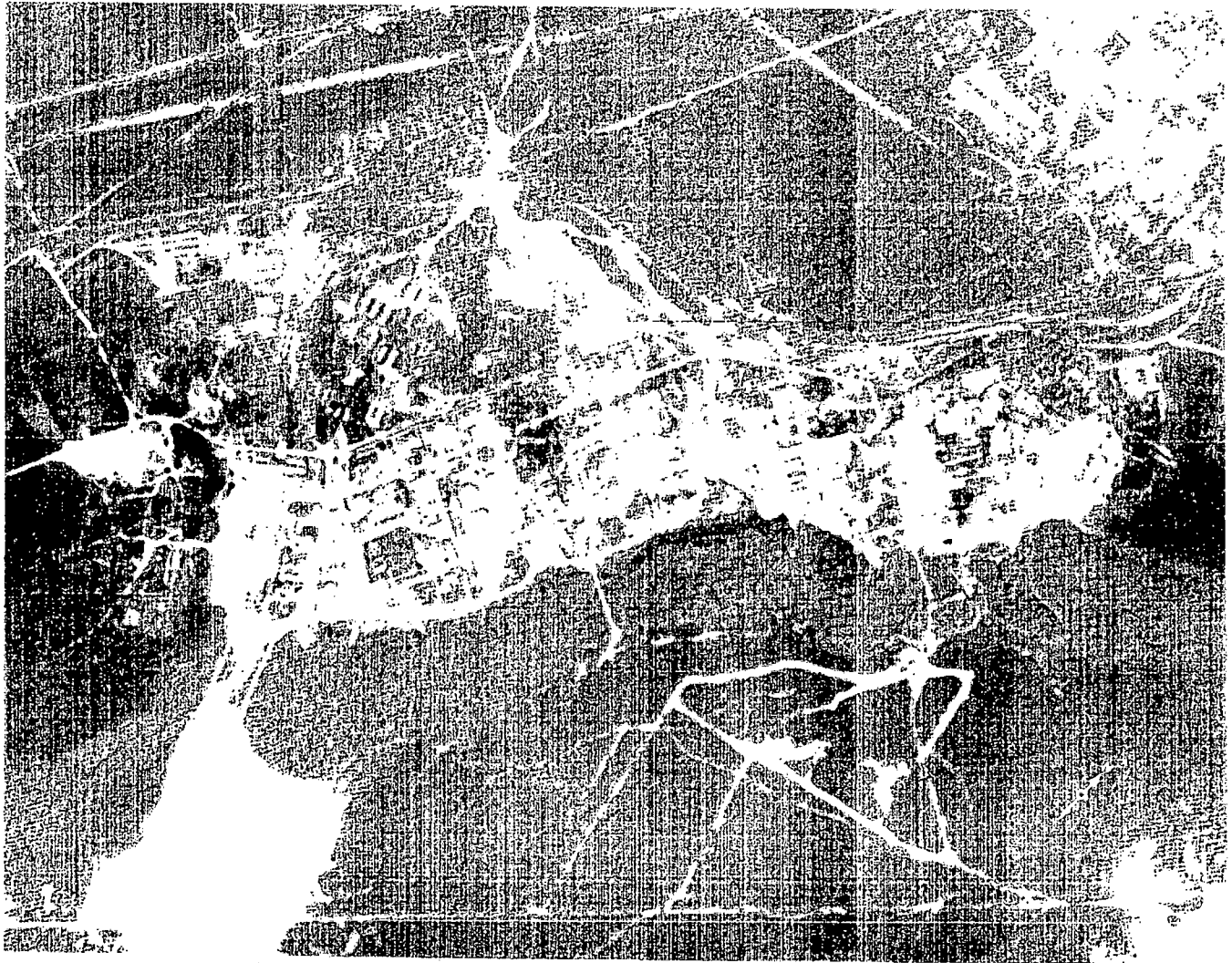


FIGURE 2. BORISOV ARMY BARRACKS SOUTH, AUGUST 1968.

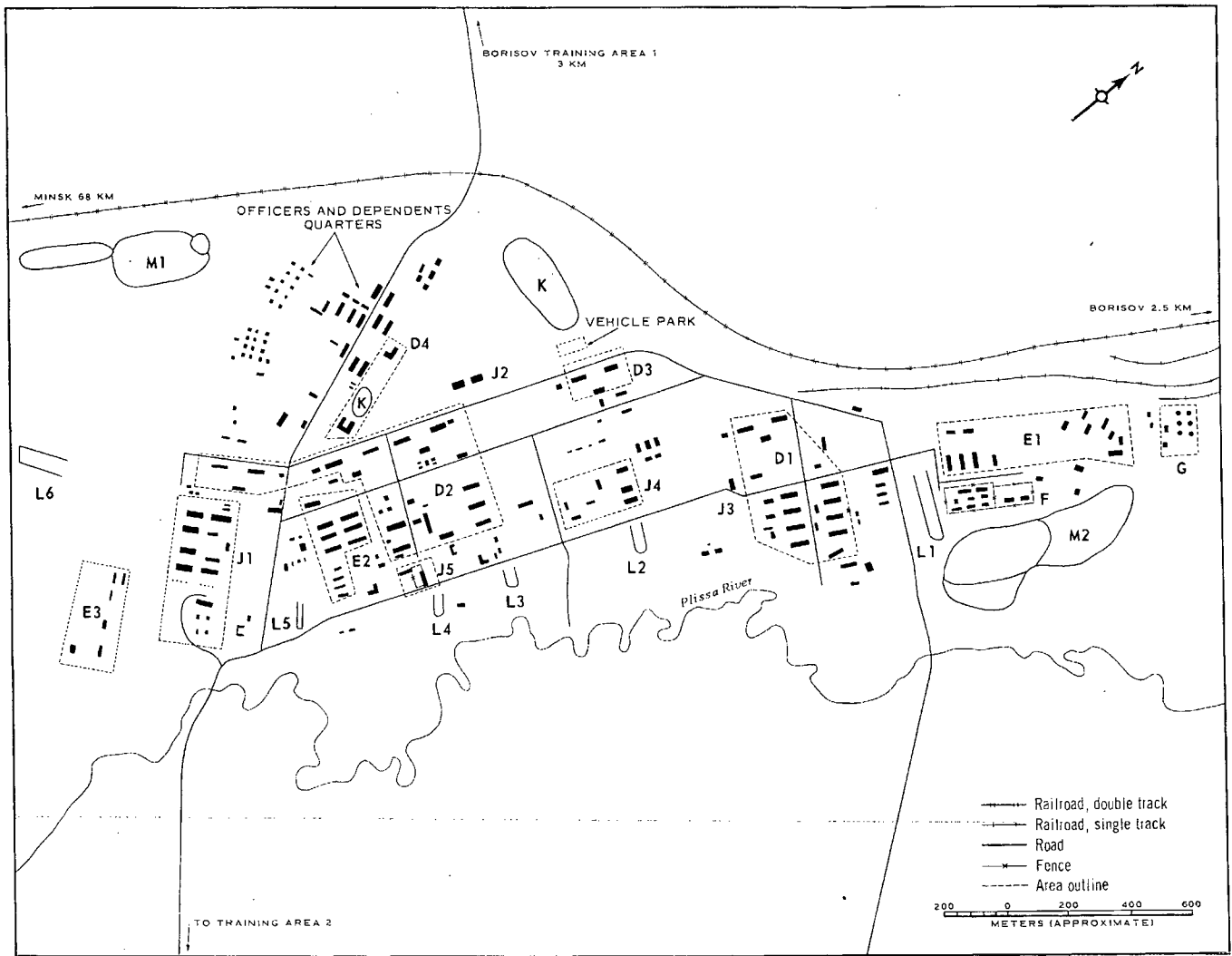


FIGURE 3. BORISOV ARMY BARRACKS SOUTH. Sketch compiled from [redacted] February 1964.

NPIC J-1627 17/541

**Driver Training Areas**

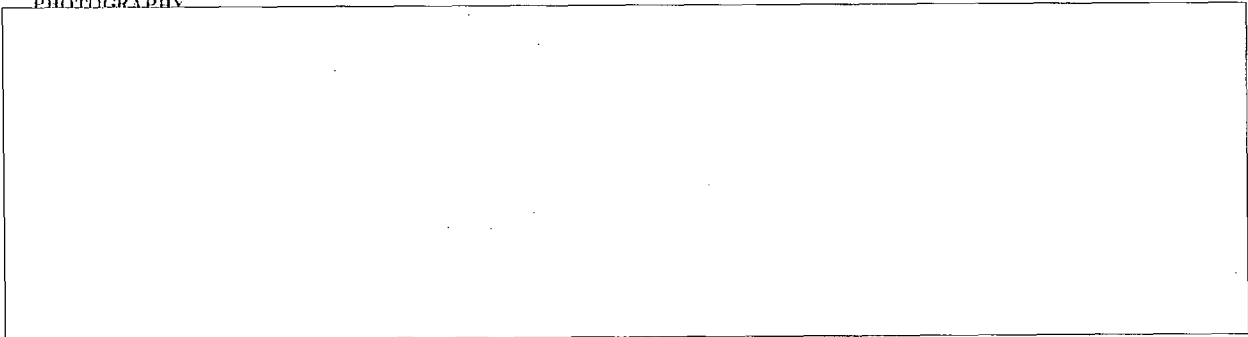
Area M1, a 1,700- by 750-foot probable wheeled-vehicle driver training course, contained four figure-8 courses and a number of straight and curved courses on 1956 TALENT photography. Straight and curved courses could

be identified in 1963. The level of track activity has not changed.

Area M2 is a 2,200- by 600-foot wheeled/tracked vehicle driver training area, probably used for local unit training. The area was still in use in 1963, as indicated by the constant level of track activity.

REFERENCES

PHOTOGRAPHY



MAPS OR CHARTS

US Air Target Chart, Series 200, Sheet 168-15HL, 2d ed, Nov 62 (SECRET)

DOCUMENTS

Army. PIM 136-63, *Borisov Military Installations*, Aug 63 (TOP SECRET CHESS RUFF)

Army. PIM 18-63, *Borisov Military Installations*, Feb 63 (TOP SECRET CHESS RUFF)

Army. PIR-TK-62-62, *Borisov Army Barracks South*, Jun 62 (TOP SECRET RUFF)

Army. DPIR-12-58, *Military Installations Borisov*, Apr 58 (TOP SECRET CHESS)



Army. SPIR-15-57, *Borisov Military Training Areas*, Mar 57 (TOP SECRET CHESS)

DIA. PC 225/1-1-63, *Installation List, Soviet Ground Forces*, 1 Oct 63 (SECRET)



DIA. PC 225/1-2-63, *Training Areas, Soviet Ground Forces*, 1 Oct 63 (SECRET)



REQUIREMENT

C-RR4-61,111 (partial answer)

NPIC PROJECT

N-236/64



TOP SECRET

TOP SECRET