

HR70-14

~~TOP SECRET~~

NPIC/R-675/64

August 1964



TCS-7410/64

Copy 107

8 Pages

PHOTOGRAPHIC INTERPRETATION REPORT

# BORISOV ARMY TRAINING AREAS

## BORISOV, USSR BELORUSSIAN MD

APPROVED  
FOR  
RELEASE -  
HISTORICAL  
COLLECTION  
DIVISION  
HR70-14  
DATE:  
07-18-2012



CIA



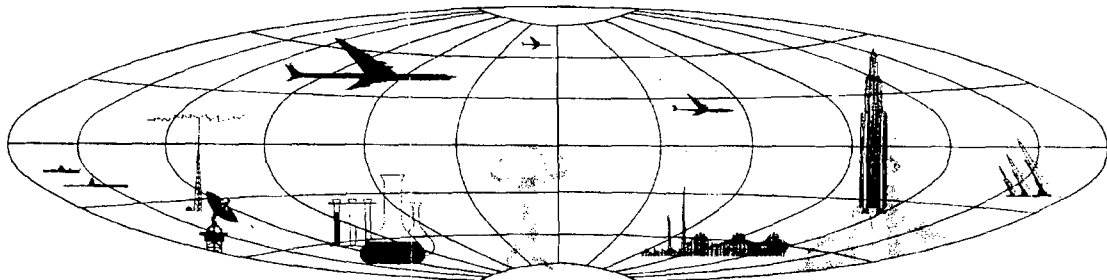
DIA

Handle Via **TALENT - KEYHOLE** Control Only

WARNING

This document contains classified information affecting the national security of the United States within the meaning of the espionage laws U. S. Code Title 18, Sections 793 and 794. The law prohibits its transmission or the revelation of its contents in any manner to an unauthorized person, as well as its use in any manner prejudicial to the safety or interest of the United States or for the benefit of any foreign government to the detriment of the United States. It is to be seen only by personnel especially indoctrinated and authorized to receive TALENT-KEYHOLE information. Its security must be maintained in accordance with KEYHOLE and TALENT regulations.

NATIONAL PHOTOGRAPHIC INTERPRETATION CENTER



~~TOP SECRET~~

GROUP 1  
Excluded from automatic  
downgrading and declassification

PREFACE

This report is one in a series on Soviet Ground Force and logistic installations being prepared for a DIA/CIA Panel. The series is being coordinated, published and disseminated by NPIC. The photographic analysis is being performed by the NPIC Photographic Analysis Group, the CIA Photographic Intelligence Division (NPIC), and the Production Center 111c (DIA). The photographic analysis for this particular report was performed by the NPIC Photographic Analysis Group.

In the interest of uniformity, the titles and letter designators for the facilities observed at these installations are identical with those appearing in the project requirement. When a specific facility is not observed both its title and letter designator are omitted in the report.

Titles and letter designators for the various facilities are as follows: (A) railroad service, (B) road service, (C) landing strips, (D) administrative and troop housing areas, (E) storage areas, (F) ammunition storage areas, (G) POL storage areas, (H) other buildings and facilities, (J) equipment storage/maintenance areas, (K) athletic fields, (L) small arms firing ranges, (M) driver training areas, (N) tank/assault gun firing ranges, (P) flat trajectory firing ranges, (Q) artillery emplacements (batteries), (R) infantry or combined arms field training area or courses, (S) special training facilities, (T) unidentified facilities or tracking activity.

Handle Via  
TALENT-KEYHOLE  
Control System Only

TCS-7410/64  
NPIC/R-675/64

**BORISOV ARMY TRAINING AREAS**

(TA-1 54-12N 028-22E)

(TA-2 54-10N 028-30E)

**BORISOV, MINSKAYA OBLAST, USSR  
BELORUSSIAN MD**

BE No: See Text TA No: 1 & 2

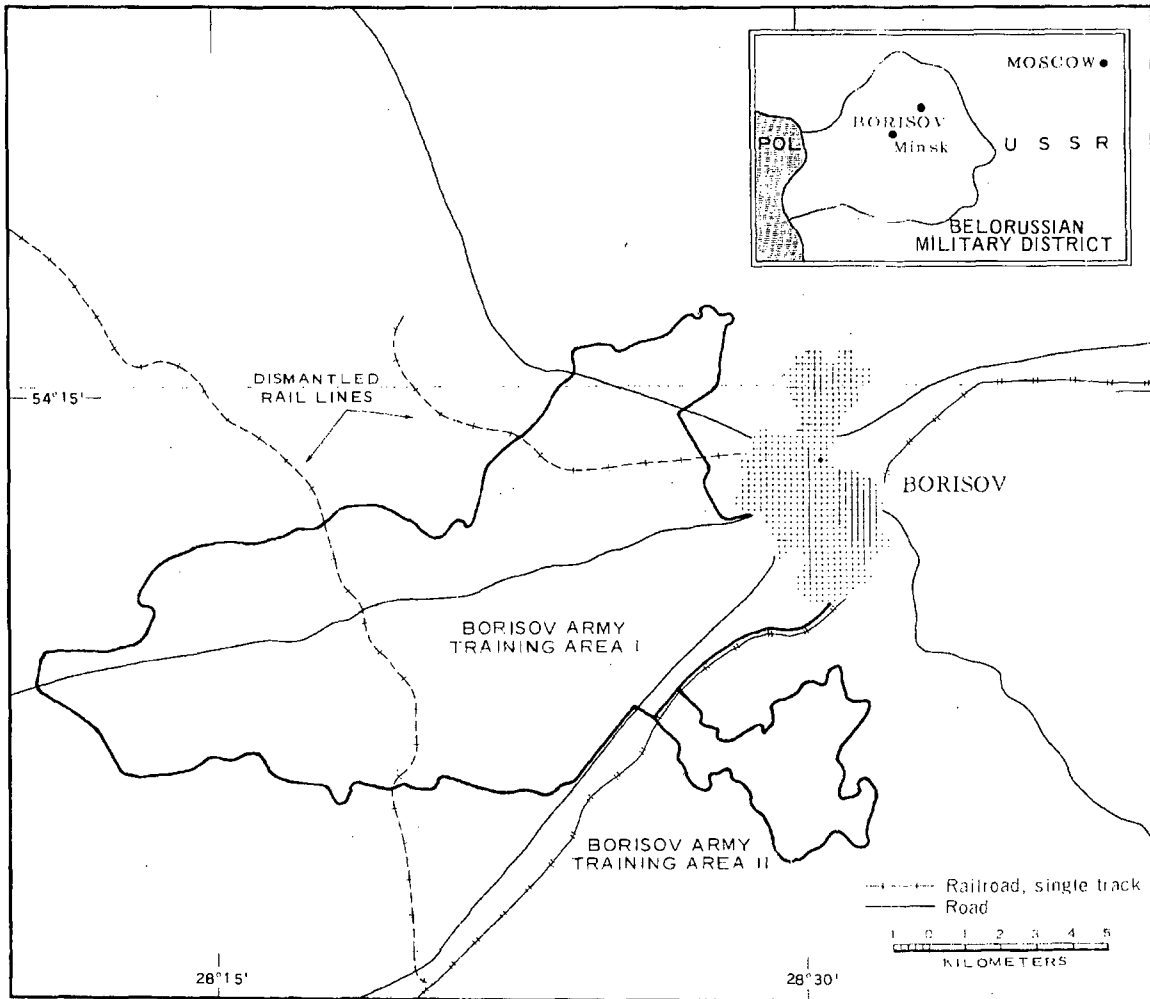


FIGURE 1. LOCATION OF BORISOV ARMY TRAINING AREAS, BORISOV, USSR.

NPIC 1-7770 17/64

Handle Via  
TALENT-KEYHOLE  
Control System Only

SUMMARY

Borisov Army Training Area I (TA-1; [redacted]) is located (Figure 1) one kilometer (km) west of Borisov (54-15N 028-30E) adjacent to Borisov Army Barracks West (AL-1). Borisov Army Training Area II (TA-2; [redacted]) is located 8 km south of Borisov, adjacent to Borisov Army Barracks South (AL-2). All-weather roads provide direct connections between the installations and link them with the Borisov-Minsk highway. Rail service is available at Borisov Army Barracks West and South.

**Training Area I**

This area (Figure 2) covers approximately 36,300 acres, extends west from Borisov Army Barracks West for a distance of about 21 km, and has an average width of about 8 km. The area has less than a 100-foot variation in overall elevation. An ammunition storage area containing four bunkers is located in the area. Troop housing and logistical support for the area is located at Borisov Army Barracks West and South.

Driver training facilities include one circular and one figure-8 driver training course for wheeled vehicles, three irregularly shaped closed-circuit courses, and two irregularly shaped areas where heavy scarring, probably by tracked vehicles, may obliterate other individual courses.

The area has 11 tank/assault-gun firing ranges. Artillery emplacements identified in the training area include a five-gun AAA battery emplacement and four three/five-gun field artillery battery emplacements.

This training area was covered by 1956 TALENT photography and nine KEYHOLE missions between August 1961 and February 1964. Comparative analysis reveals the following significant changes during the July 1956-August 1961 period: (a) the apparent abandonment of

an artillery impact area and a number of tank firing ranges formerly located about two km east of the present main static firing line, (b) the establishment of six new tank/assault-gun firing ranges, (c) the addition of moving target runs at two existing firing ranges, and (d) the establishment of three irregularly shaped closed-circuit driver training courses. Between August 1961 and February 1962, an ammunition storage area was constructed. Between May 1962 and July 1962, a moving target run was added to a firing range. Between July 1962 and June 1963 changes included (a) the establishment of a combined-arms field-training course on an existing firing range and (b) the addition of a moving target run to an existing firing range. Between August 1962 and June 1963 a probable moving target run was added to an existing range.

The general level of track activity in the area remained about the same over the 1956-1964 period with relatively light activity in the winter months. Facilities showing usage on snow-covered photography of February 1964 include two of the seven driver training courses and one moving target tank firing range.

**Training Area II**

This irregular-shaped area covers about 3,900 acres on the southern edge of Borisov Army Barracks South. It is on relatively flat terrain (less than 50-foot variation in elevation) and is surrounded by heavily wooded areas. Troop housing and logistic support for the training area are located at Borisov Army Barracks South and West.

Training facilities in this area (Figure 2) are an elliptical driver-training course for tracked vehicles, an irregularly shaped closed-circuit course for wheeled vehicles, and a possible river-crossing site for engineer training.

This training area was covered by 1956 TALENT photography and nine KEYHOLE missions between August 1961 and February 1964. Comparative analysis reveals the apparent abandonment of numerous troop field-training areas in the southern section between July 1956 and August 1961.

The general level of track activity remained about the same during the 1956-1963 period with relatively light activity in the winter months. Facilities showing usage on snow-covered photography of February 1964 are the two driver training courses.

#### DESCRIPTION OF INSTALLATION

##### Railroad Service

Rail service for the training areas is available at Borisov Army Barracks West and South.

##### Road Service

Probable all-weather roads lead to the Minsk-Borisov highway.

##### Ammunition Storage Areas

Area F1 contains two 160- by 50-foot bunkers. Area F2 contains two 320- by 80-foot bunkers. All bunkers were constructed between August 1961 and February 1962. The level of usage cannot be determined.

##### Driver Training Areas

Area M1 is a wheeled/tracked-vehicle driver-training area. This irregular-shaped area contains one circular and one figure-8 wheeled-vehicle driving course and an undetermined number of other wheeled- and tracked-vehicle driving courses obliterated by heavy scarring. Only the circular course was in use on snow-covered photography of February 1964. In July 1956, a portion of this area contained tank firing ranges which were not present in August 1961.

Area M2 is a wheeled-vehicle driver-training area. This irregularly shaped closed-circuit course, first observed in August 1961, was observed in use on snow-covered photography of February 1964 when 15 probable vehicles were noted in the southwest portion.

Area M3 is a probable tracked-vehicle driver-training area. This irregularly shaped closed-circuit course, first observed in August

1961, appears to have stopping points, possibly for crew training.

Area M4 is a probable wheeled-vehicle driver-training area. This irregularly shaped closed-circuit course was first observed in August 1961.

Area M5 is an irregular area used by tracked vehicles in which heavy scarring prevents determination of individual courses.

Areas M1 through M5 are in Training Area I.

Area M6 is a wheeled/tracked-vehicle driver-training area. This irregular area contains one elliptical closed-circuit course for tracked vehicles and one irregularly shaped closed-circuit course for wheeled vehicles, both in use on snow-covered photography of February 1964.

The level of scarring activity appeared constant at all of the above training areas.

##### Tank/Assault Gun Firing Ranges

Area N1 is a 2,900-foot range\* with two 1,500-foot firing lanes and three moving target runs, one at 55 degrees right and two at 20 degrees right.\*\* The range was first observed in August 1961.

Area N2 is a 1,315-foot range with an undetermined number of 1,050-foot firing lanes and

\*The length of a range is the maximum distance from the static firing line to the moving target runs or impact area.

\*\*The angle of the moving target run is the angle formed by the target run and a perpendicular line from the static firing line to the target run at the control house position.

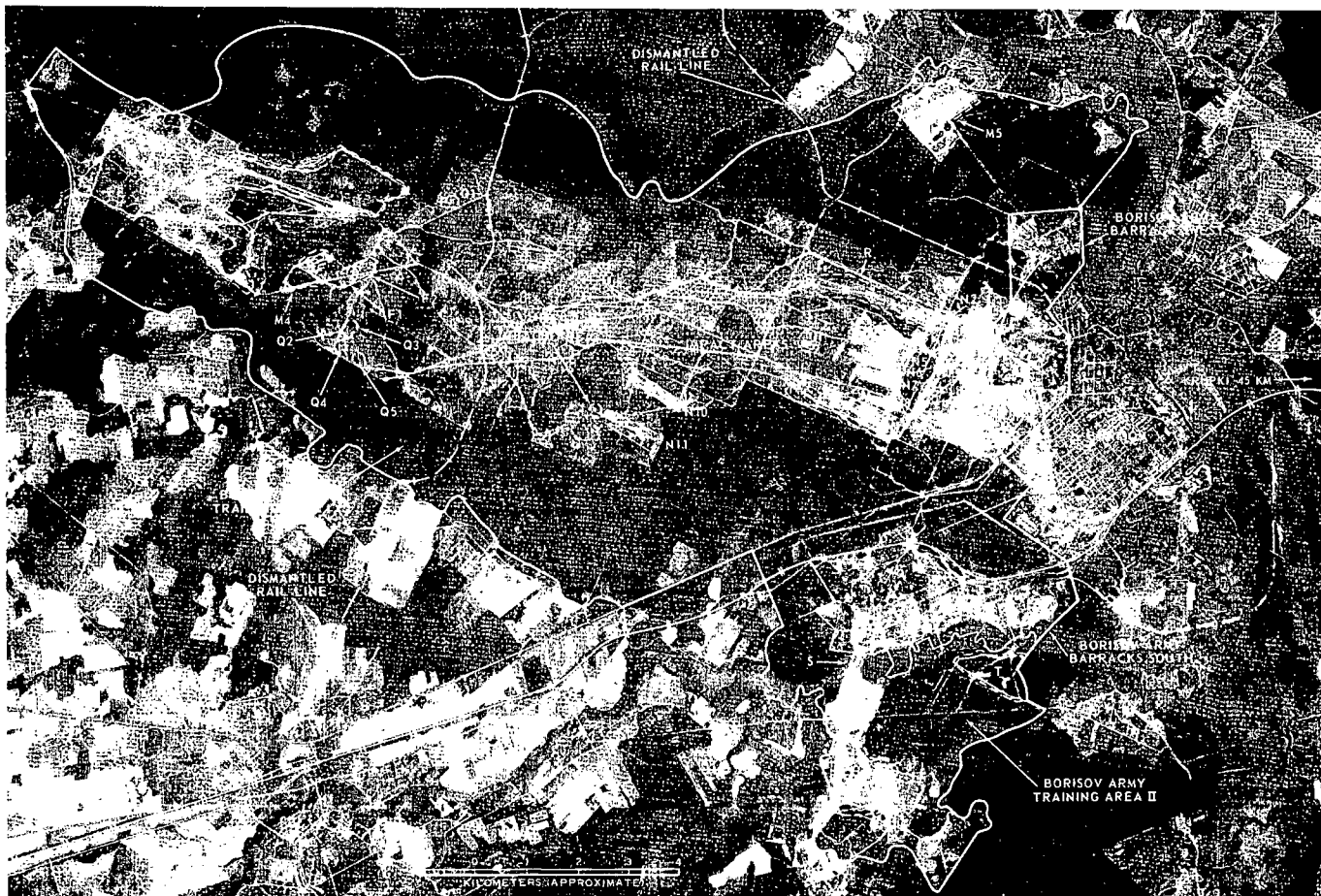


FIGURE 2. BORISOV ARMY TRAINING AREAS, BORISOV, USSR, AUGUST 1963.

Handle Via  
TALENT-KEYHOLE  
Control System Only

TCS-7410/64  
NPIC/R-675/64

one moving target run at 60 degrees right. The moving target run was added between May and July 1962. The range joins a combined-arms field training course, Area R.

Area N3 is a 260- by 85-foot range. It was first observed in August 1961. The location of this range on the static firing line adjacent to the tank firing ranges suggests a subcaliber weapons firing range.

Area N4 is a 3,700-foot range with four 2,600-foot firing lanes and eight moving target runs, one at 90 degrees left, one at 90 degrees right, three at 10 degrees left, and three at 10 degrees right.

Area N5 is a 10,050-foot range with three 2,750 firing lanes and impact areas. The range was first observed in August 1961.

Area N6 is a 4,250-foot range with three 2,600-foot firing lanes, one moving target run at 65 degrees right and one impact area 5,900 feet downrange. The area was first observed in August 1961.

Area N7 is a 3,000-foot range with three 1,600-foot firing lanes, one moving target at 65 degrees right, and one impact area 10,000 feet downrange. The moving target run was added between July 1962 and June 1963.

Area N8 is a 2,060-foot range with two 1,600-foot firing lanes and one moving target run at 90 degrees right. The moving target run was added between July 1956 and August 1961.

Area N9 is a 3,750-foot range with three 2,550-foot firing lanes and one moving target run at 80 degrees right. The moving target run was added between July 1956 and August 1961. The area was observed in use on snow-covered photography of February 1964.

Area N10 is a 3,470-foot range with three 2,550-foot firing lanes and one probable moving

target run at 80 degrees right. The lanes were first observed in August 1961. The probable moving target run was added between August 1962 and June 1963.

Area N11 is a 4,575-foot range with three 3,675-foot firing lanes and an impact area. The area was first observed in August 1961. Relatively light trackage was observed in this area.

All of the above ranges are in Training Area I. Unless otherwise noted, the level of track activity at all of the above ranges remained about the same over the entire period of coverage and no activity observed on winter coverage.

**Artillery Emplacements (Batteries)**

Area Q1 is a five-gun AAA site.

Areas Q2, Q3, Q4, and Q5 are field artillery emplacements with five, three, four, and four guns, respectively.

All emplacements appear inactive on coverage from August 1961 to February 1964. An impact area observed on July 1956 TALENT photography is now crossed by a number of roads and is no longer in use.

**Infantry or Combined Arms  
Field Training Area or Course**

Area R, a probable combined armstraining course, starts with tank firing range N2 and extends at least 7,500 feet beyond it to the west.

**Special Training Facility**

Area S contains a possible engineer training water-crossing site.



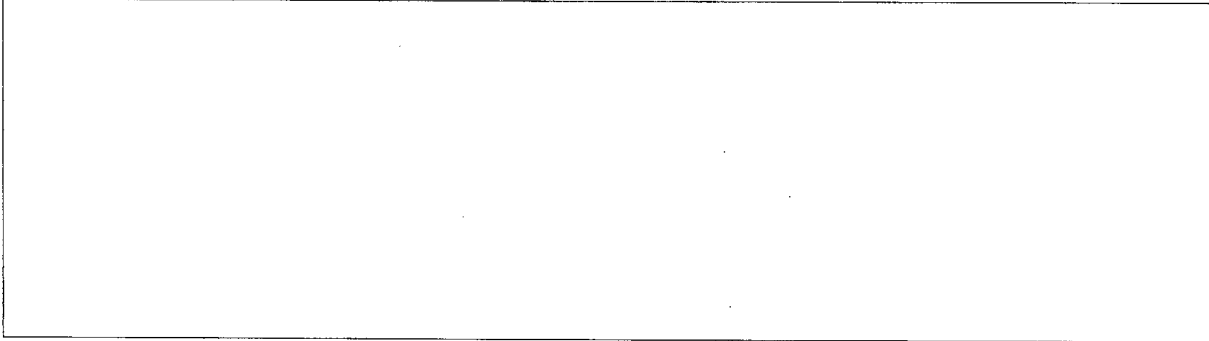
Handle Via  
TALENT-KEYHOLE  
Control System Only

Handle Via  
TALENT-KEYHOLE  
Control System Only

TCS-7410/64  
NPIC/R-675/64

REFERENCES

PHOTOGRAPHY



MAPS OR CHARTS

US Air Target Chart, Series 200, Sheet 0168-15HL, 2d ed, Nov 62 (SECRET)

US Air Target Mosaic, Series 50, Sheet 0168-15/1MA, 2d ed, Jul 62 (SECRET)

DOCUMENTS

Army. DPIR-12-58, *Military Installations Borisov*, Apr 58 (TOP SECRET CHESS)

NPIC. R-158/64, *Military Training Areas Borisov*, Mar 64 (TOP SECRET CHESS RUFF)

DIA. PC-225/1-2-63, *Training Areas, Soviet Ground Forces*, Oct 63 (SECRET)

REQUIREMENT

C-RR4-81,111 (partial answer)

NPIC PROJECT

N-236/64

Handle Via  
TALENT-KEYHOLE  
Control System Only



~~TOP SECRET~~

~~TOP SECRET~~