

HR70-14

NPIC/R-913/64

November 1964

~~TOP SECRET~~

TCS-8462/64

Copy 08

6 Pages



PHOTOGRAPHIC INTERPRETATION REPORT

APPROVED FOR RELEASE -
HISTORICAL COLLECTION
DIVISION-HR70-14 DATE:
05-31-2012

SOVIET MILITARY ORDER OF BATTLE KIYEV MD



CIA



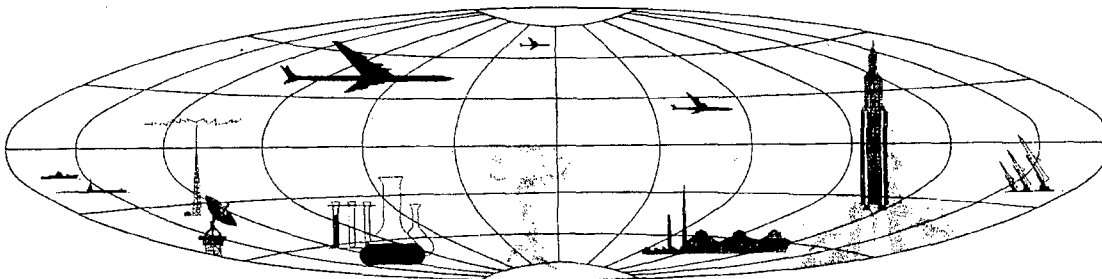
DIA

Handle Via **TALENT - KEYHOLE** Control Only

WARNING

This document contains classified information affecting the national security of the United States within the meaning of the espionage laws U. S. Code Title 18, Sections 793 and 794. The law prohibits its transmission or the revelation of its contents in any manner to an unauthorized person, as well as its use in any manner prejudicial to the safety or interest of the United States or for the benefit of any foreign government to the detriment of the United States. It is to be seen only by personnel especially indoctrinated and authorized to receive TALENT-KEYHOLE information. Its security must be maintained in accordance with KEYHOLE and TALENT regulations.

NATIONAL PHOTOGRAPHIC INTERPRETATION CENTER



~~TOP SECRET~~

GROUP 1
Excluded from automatic
downgrading and declassification

PREFACE

This report is one in a series on Soviet Ground Force and logistic installations being prepared for a DIA/CIA Panel. The series is being coordinated, published and disseminated by NPIC. The photographic analysis is being performed by the NPIC Photographic Analysis Group, the CIA Photographic Intelligence Division (NPIC), and the Production Center 1PIC (DIA). The photographic analysis for this particular report was performed by the NPIC Photographic Analysis Group.

In the interest of uniformity, the titles and letter designators for the facilities observed at these installations are identical with those appearing in the project requirement. When a specific facility is not observed both its title and letter designator are omitted in the report.

Titles and letter designators for the various facilities are as follows: (A) railroad service, (B) road service, (C) landing strips, (D) administrative and troop housing areas, (E) storage areas, (F) ammunition storage areas, (G) POL storage areas, (H) other buildings and facilities, (J) equipment storage/maintenance areas, (K) athletic fields, (L) small arms firing ranges, (M) driver training areas, (N) tank/assault gun firing ranges, (P) flat trajectory firing ranges, (Q) artillery emplacements (batteries), (R) infantry or combined arms field training area or courses, (S) special training facilities, (T) unidentified facilities or tracking activity.

~~TOP SECRET CHESS RUFF~~

Handle Via
TALENT-KEYHOLE
Control System Only

TCS-8462/64
NPIC/R-913/64

BALAKLEYA AMMUNITION DEPOT NE
AND BALAKLEYA ARMY BARRACKS NE
(49-28N 036-52E)
BALAKLEYA, KHARKOVSKAYA OBLAST, USSR
KIYEV MD

BE No: See Text

AL No:

COMOR No:

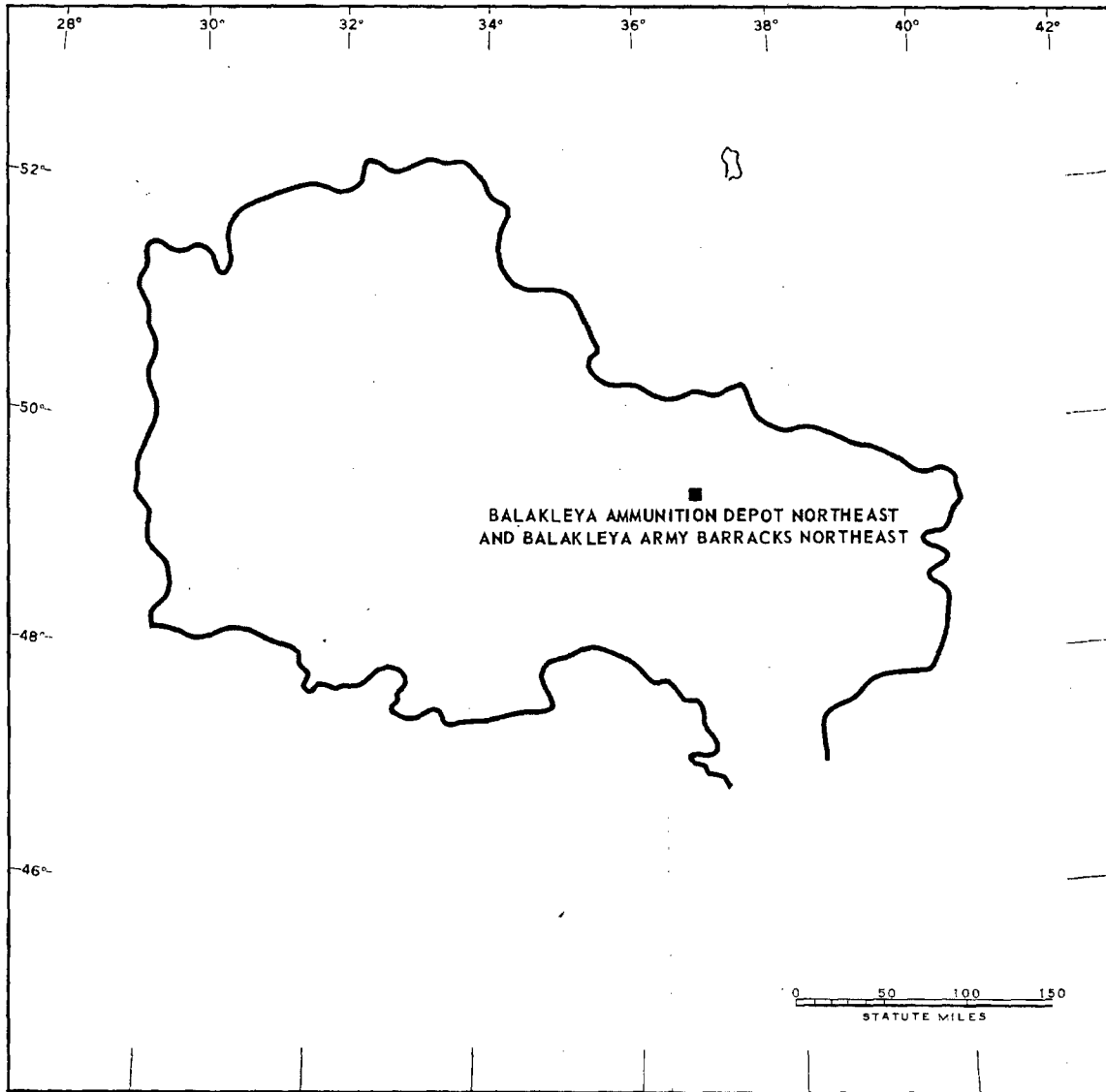


FIGURE 1. LOCATION OF BALAKLEYA AMMUNITION DEPOT NE AND BALAKLEYA ARMY BARRACKS NE.

- 2 -

~~TOP SECRET CHESS RUFF~~

Handle Via
TALENT-KEYHOLE
Control System Only

Handle Via
TALENT-KEYHOLE
Control System Only

TCS-8462/64
NPIC/R-913/64

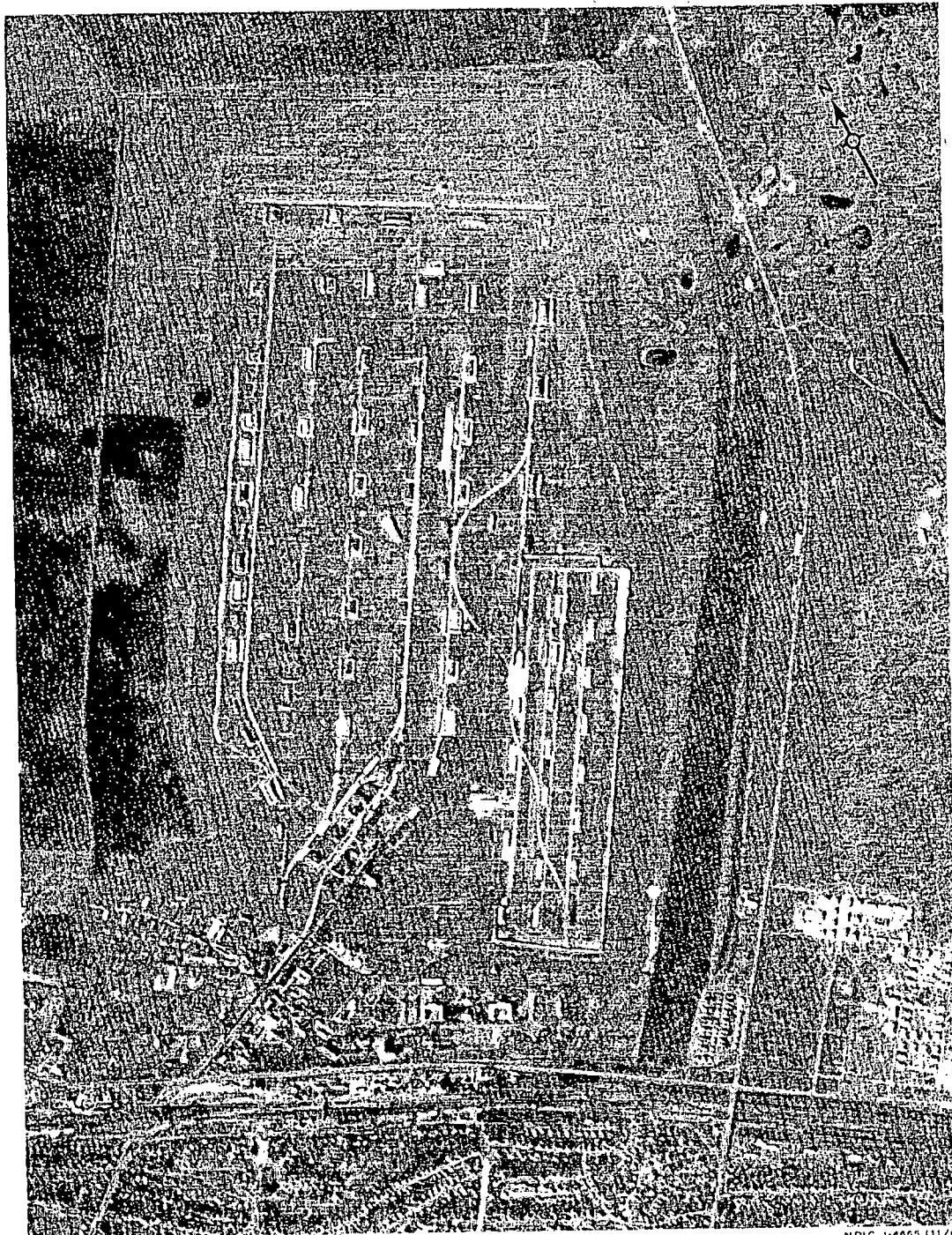


FIGURE 2. BALAKLEYA AMMUNITION DEPOT NE AND BALAKLEYA ARMY BARRACKS NE, USSR, APRIL 1962.

Handle Via
TALENT-KEYHOLE
Control System Only

SUMMARY

Balakleya Ammunition Depot NE [] is located on the northeast edge of Balakleya. Balakleya Army Barracks NE [] which probably provides support for the depot, is located adjacent to the southwest edge of the depot (Figure 1).

The depot and barracks area cover approximately 1,150 acres. The depot, which is double secured, contains 48 revetted and 35 unrevetted ammunition storage buildings, 10 support buildings, and a possible ammunition fabrication facility consisting of 6 probable light fabrication buildings, 5 road-to-rail transloading buildings and 3 support buildings.

The barracks area, which is possibly secured by a fence, contains 1 multistory L-shaped administration building, 2 large multistory U-shaped barracks, 3 small multistory U-shaped barracks, 13 probable quarters, 27 general storage buildings, 2 possible vehicle sheds, 12 support buildings, and 12 possible small vertical POL tanks.

The area is covered by 1960 TALENT photography and 5 KEYHOLE missions between April 1962 and February 1964. The installation appears active on all photography with no changes in facilities observed.

DESCRIPTION OF INSTALLATION

Railroad Service

A spur extending from the Kharkov-Lugansk double-track rail line serves the installation. The spur splits and forms 8 sidings, thereby servicing the majority of the buildings.

Road Service

The installation is served by a secondary road extending from the Andreyevka Pervaya-Izyum highway.

Administrative and Troop Housing Area

Area D contains 2 large multistory U-shaped barracks, 3 small multistory U-shaped barracks, 1 multistory L-shaped administration building and 5 support buildings. This area is known as Balakleya Army Barracks Northeast and is probably a support facility for the depot.

General Storage Area

Area E contains 27 general storage and 3 support buildings. The area is possibly secured by a fence on 3 sides and a wall on the west side.

Ammunition Storage Area

Area F contains 48 revetted and 35 unrevetted ammunition storage buildings and 10 support buildings. All but 4 unrevetted and 10 revetted ammunition storage buildings are directly rail served. Three of the support buildings are probably guard towers. The area is double secured.

POL Storage Area

Area G contains 12 possible small vertical tanks.

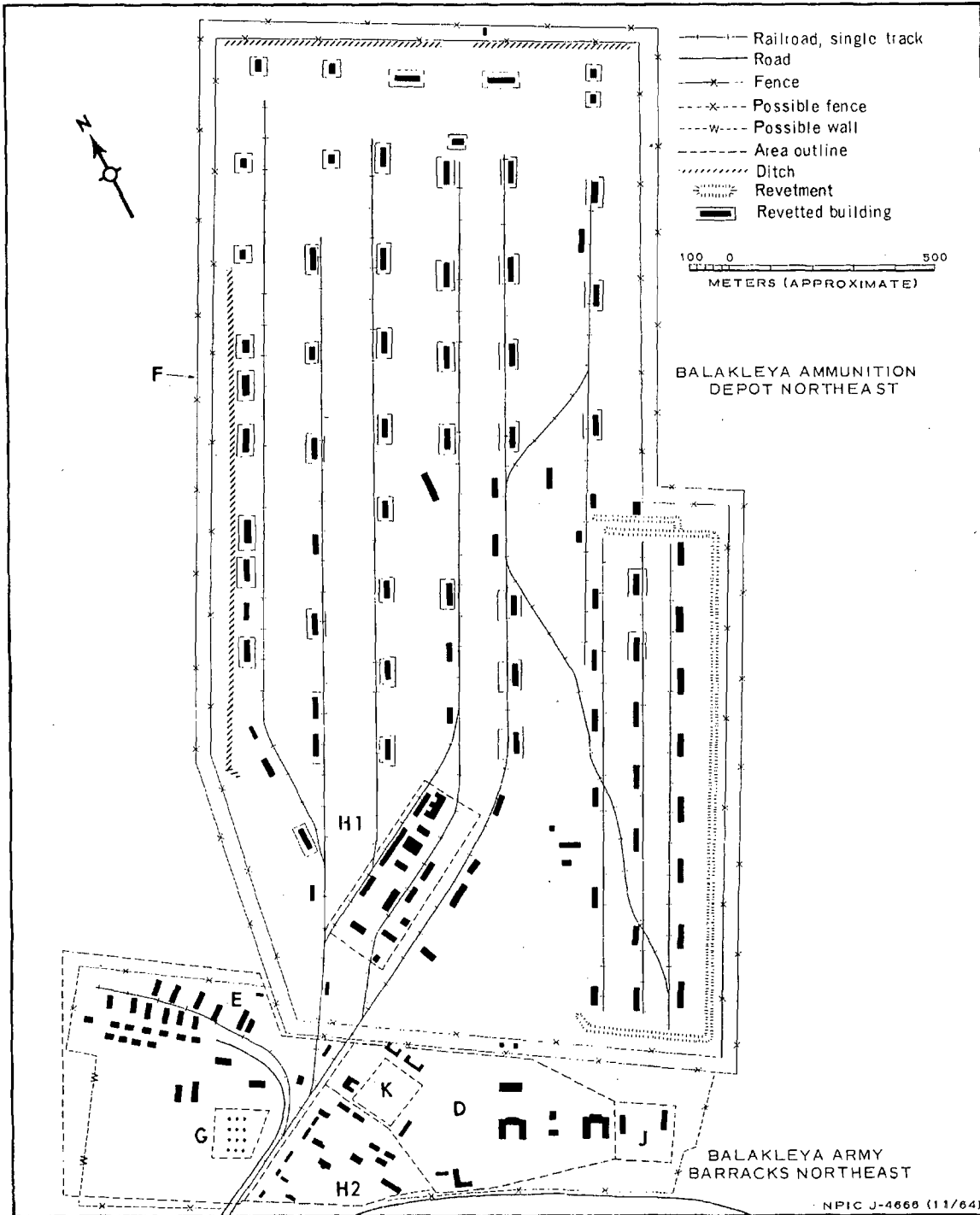


FIGURE 3. BALAKLEYA AMMUNITION DEPOT NE AND BALAKLEYA ARMY BARRACKS NE.

Sketch compiled from [redacted] April 1962.

Handle Via
TALENT-KEYHOLE
Control System Only

TCS-8462/64
NPIC/R-913/64

Other Buildings and Facilities

Area H1 contains 5 transloading buildings, 6 probable light fabrication buildings, and 3 support buildings. This is a possible ammunition fabrication facility.

Area H2 contains 13 probable quarters and 4 support buildings and is a probable billeting facility for the possible ammunition fabrication facility.

Equipment Storage/Maintenance Area

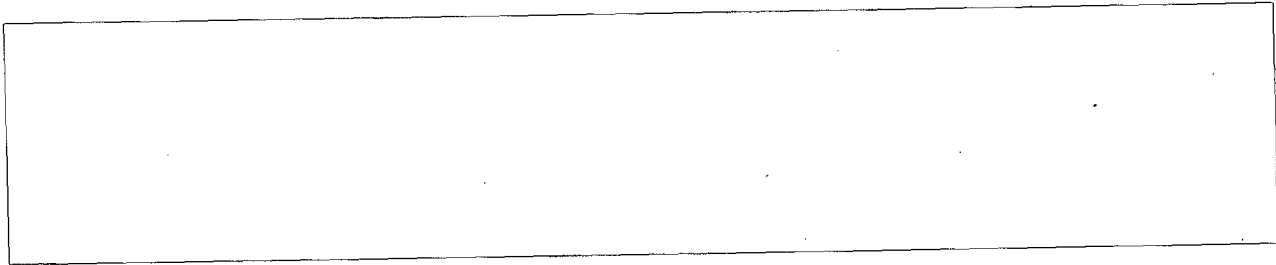
Area J contains two 150- by 35-foot possible vehicle sheds.

Athletic Field

Area K is an athletic field.

REFERENCES

PHOTOGRAPHY



MAPS OR CHARTS

US Air Target Chart, Series 200, Sheet 0234-17HL, 2d ed, Apr 63 (SECRET)

DOCUMENT



REQUIREMENT

C-RR4-81,614 (partial answer)

NPIC PROJECT

N-799/64

Handle Via
TALENT-KEYHOLE
Control System Only

~~TOP SECRET~~

~~TOP SECRET~~