

HR70-14

~~TOP SECRET~~

NPIC/R-984/64

December 1964

TCS-9046/64

Copy **108**

6 Pages



PHOTOGRAPHIC INTERPRETATION REPORT

APPROVED FOR RELEASE -
HISTORICAL COLLECTION
DIVISION-HR70-14 DATE:
05-31-2012

SOVIET MILITARY ORDER OF BATTLE KIYEV MD



CIA



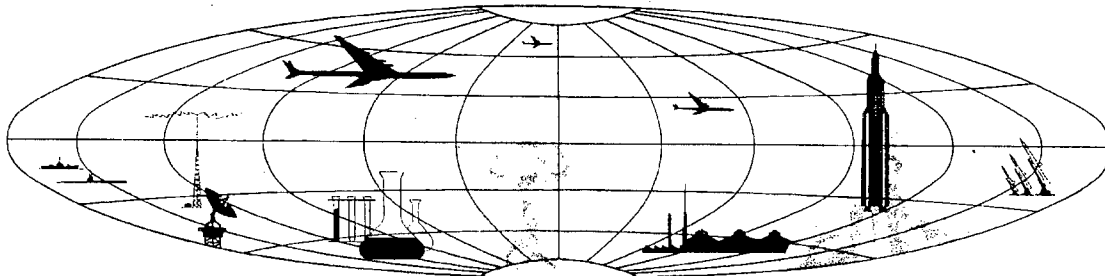
DIA

Handle Via **TALENT - KEYHOLE** Control Only

WARNING

This document contains classified information affecting the national security of the United States within the meaning of the espionage laws U. S. Code Title 18, Sections 793 and 794. The law prohibits its transmission or the revelation of its contents in any manner to an unauthorized person, as well as its use in any manner prejudicial to the safety or interest of the United States or for the benefit of any foreign government to the detriment of the United States. It is to be seen only by personnel especially indoctrinated and authorized to receive TALENT-KEYHOLE information. Its security must be maintained in accordance with KEYHOLE and TALENT regulations.

NATIONAL PHOTOGRAPHIC INTERPRETATION CENTER



~~TOP SECRET~~

GROUP 1
Excluded from automatic
downgrading and declassification

~~TOP SECRET RUFF~~

Handle Via
TALENT-KEYHOLE
Control System Only

TCS-9046/64
NPIC/R-984/64

PREFACE

This report is one in a series on Soviet Ground Force and logistic installations being prepared for a DIA/CIA Panel. The series is being coordinated, published and disseminated by NPIC. The photographic analysis is being performed by the NPIC Photographic Analysis Group, the CIA Photographic Intelligence Division (NPIC), and the Production Center 1P1c (DIA). The photographic analysis for this particular report was performed by the NPIC Photographic Analysis Group.

In the interest of uniformity, the titles and letter designators for the facilities observed at these installations are identical with those appearing in the project requirement. When a specific facility is not observed both its title and letter designator are omitted in the report.

Titles and letter designators for the various facilities are as follows: (A) railroad service, (B) road service, (C) landing strips, (D) administrative and troop housing areas, (E) storage areas, (F) ammunition storage areas, (G) POL storage areas, (H) other buildings and facilities, (J) equipment storage/maintenance areas, (K) athletic fields, (L) small arms firing ranges, (M) driver training areas, (N) tank/assault gun firing ranges, (P) flat trajectory firing ranges, (Q) artillery emplacements (batteries), (R) infantry or combined arms field training area or courses, (S) special training facilities, (T) unidentified facilities or tracking activity.

- 1 -

~~TOP SECRET RUFF~~

Handle Via
TALENT-KEYHOLE
Control System Only

~~TOP SECRET RUFF~~

Handle Via
TALENT-KEYHOLE
Control System Only

TCS-9046/64
NPIC/R-984/64

KREMENCHUG AMMUNITION DEPOT NORTHWEST

(49-04N 033-24E)

KREMENCHUG, POLTAVSKAYA OBLAST, USSR

KIYEV MD

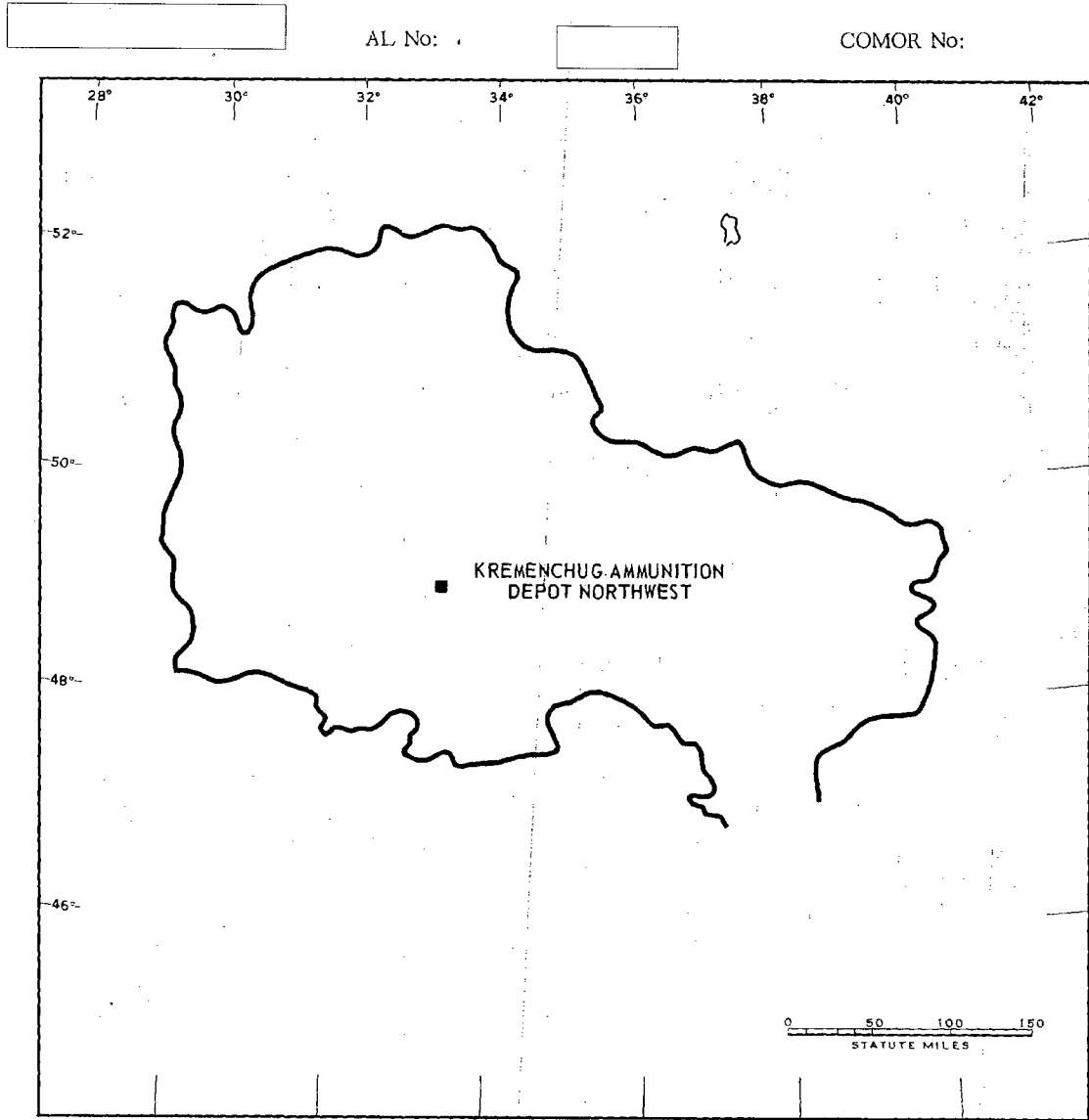


FIGURE 1. LOCATION OF KREMENCHUG AMMUNITION DEPOT NORTHWEST.

~~TOP SECRET RUFF~~

Handle Via
TALENT-KEYHOLE
Control System Only

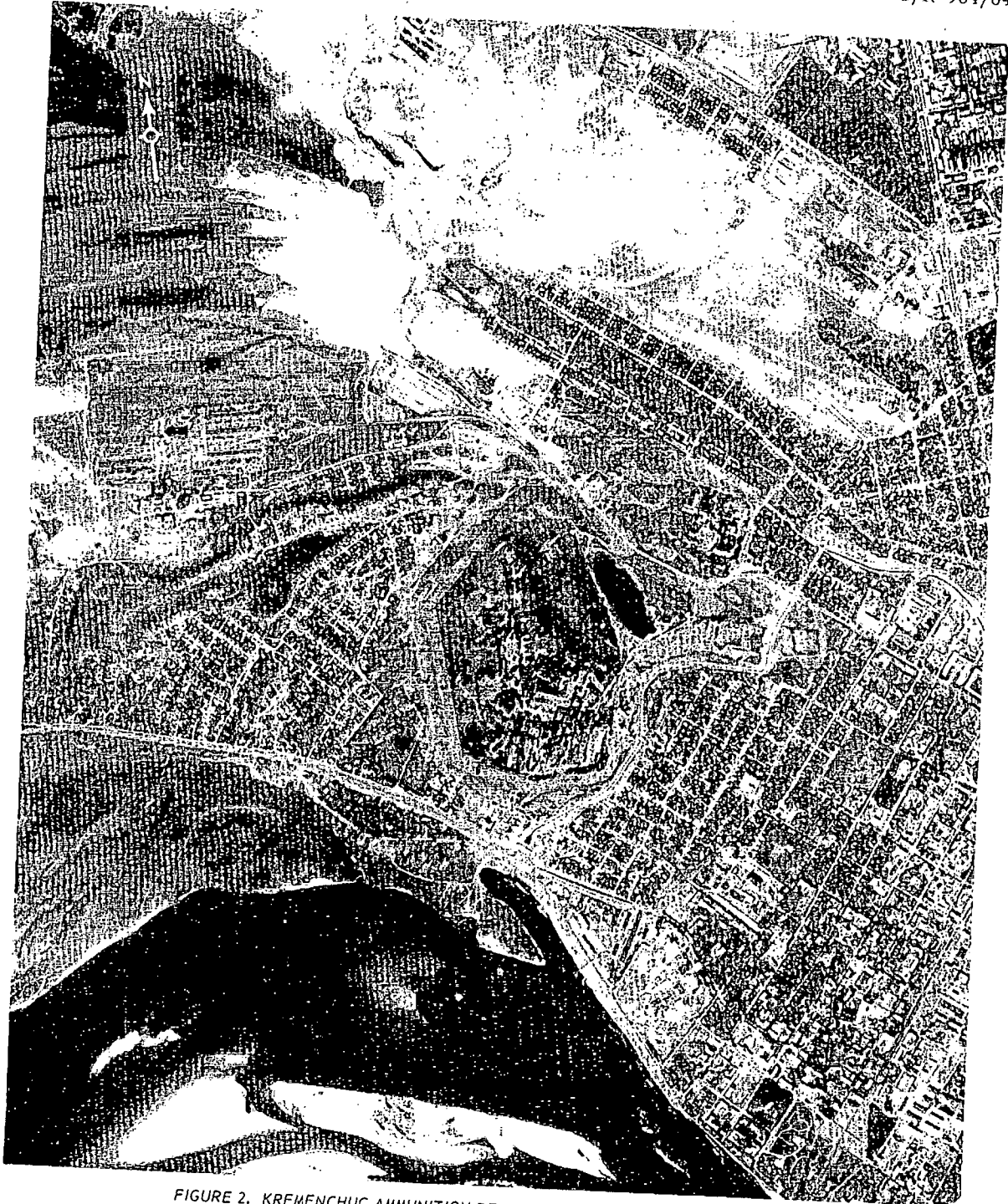


FIGURE 2. KREMENCHUG AMMUNITION DEPOT NORTHWEST, USSR, JUNE 1964.

NPIC J-4040 (11/64)

SUMMARY

Kremenchug Ammunition Depot Northwest is located on the northwest edge of Kremenchug in a sparsely wooded area (Figure 1).

This secured installation covers approximately 205 acres and contains a probable administration building, 12 probable ammunition storage buildings, 3 quarters, 5 storage build-

ings and a transloading building (Figures 2 and 3).

The area was covered by 5 KEYHOLE missions between December 1961 and August 1964. Three ammunition storage buildings were added between December 1961 and June 1964. The installation appears active on all coverage.

DESCRIPTION OF INSTALLATION

Railroad Service

A loop rail spur and at least 3 small branch spurs from the main railyard in Kremenchug serve the depot.

Road Service

An all-weather secondary road provides access to Kremenchug.

Administrative and Troop Housing Areas

Area D1 contains 3 personnel quarters. Area D2 contains a probable administration building.

General Storage Area

Area E contains 5 warehouse-type storage buildings with open storage between the buildings. The area is served by 3 rail spurs.

Ammunition Storage Area

Area F contains 12 probable ammunition storage buildings, (1 surrounded by large earthen walls) and a transloading building. Three storage buildings were added between December 1961 and June 1964.

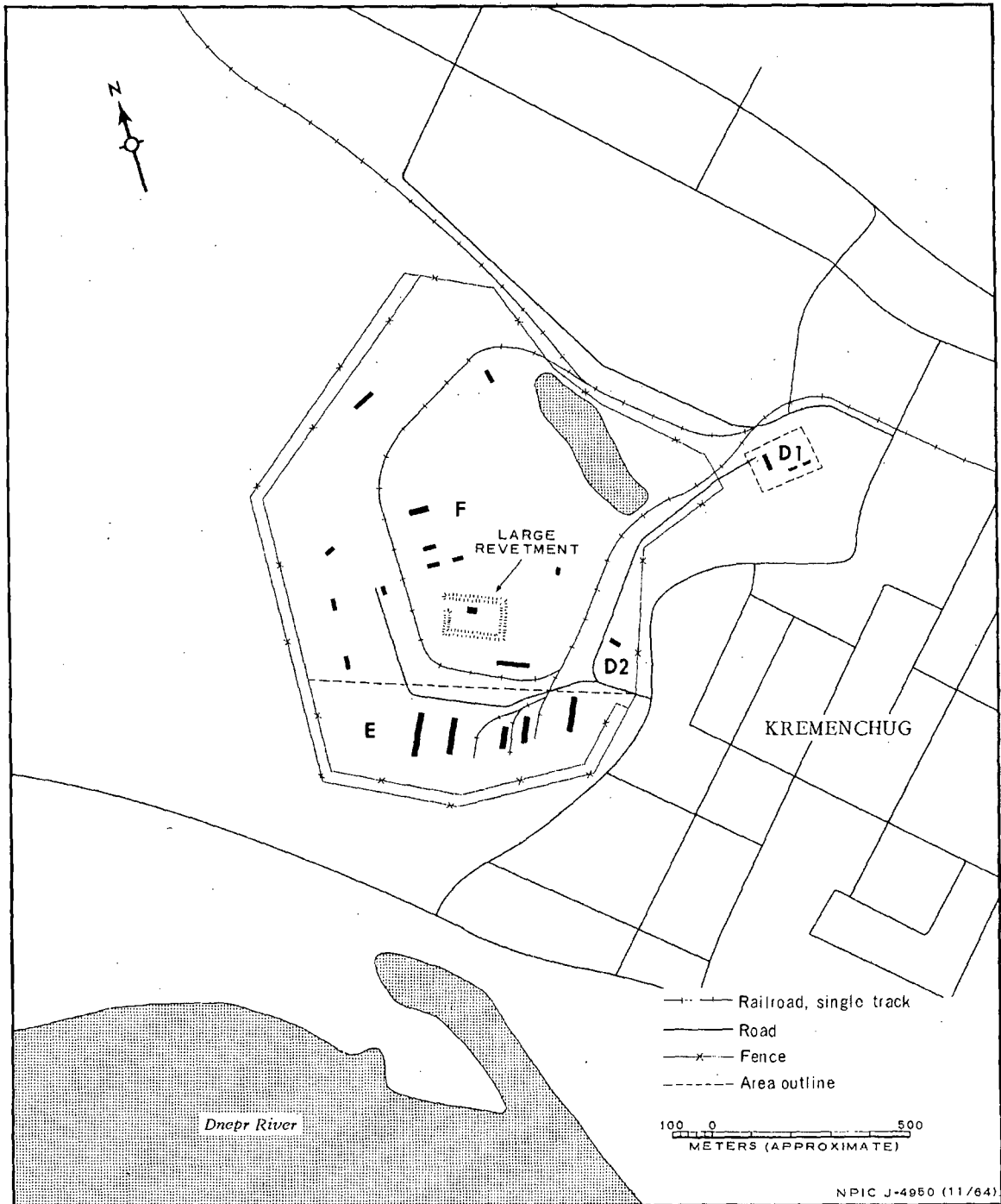


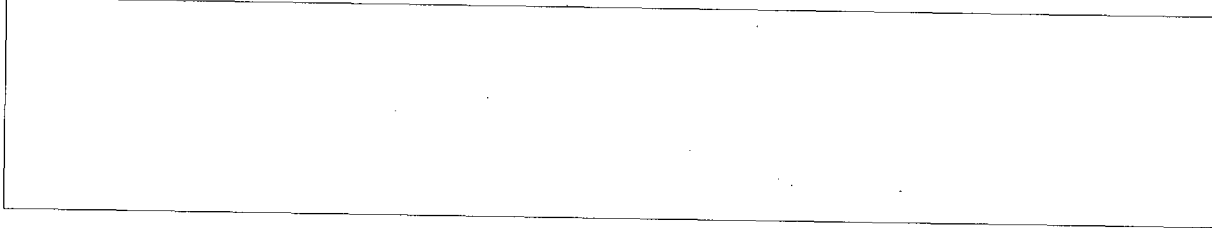
FIGURE 3. KREMENCHUG AMMUNITION DEPOT NORTHWEST. Sketch compiled from [redacted] June 1964.

Handle Via
TALENT-KEYHOLE
Control System Only

TCS-9046/64
NPIC/R-984/64

REFERENCES

PHOTOGRAPHY



MAPS OR CHARTS

US Air Target Chart, Series 200, Sheet 0233-20HL, 3d ed, Jun 62 (SECRET)

DOCUMENT



REQUIREMENT

C-RR4-81,614 (partial answer)

NPIC PROJECT

N-799/64

Handle Via
TALENT-KEYHOLE
Control System Only

~~TOP SECRET~~

~~TOP SECRET~~