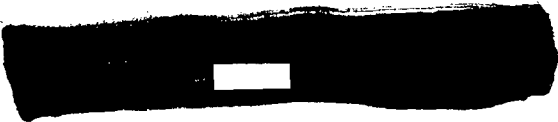


HR70-14

~~TOP SECRET~~

NPIC/R-5109/64

December 1964



TCS-10646/64

Copy 108

6 Pages

PHOTOGRAPHIC INTERPRETATION REPORT

APPROVED FOR
RELEASE - HISTORICAL
COLLECTION DIVISION
DATE: 06-18-2012

SOVIET MILITARY ORDER OF BATTLE KIYEV MD



CIA



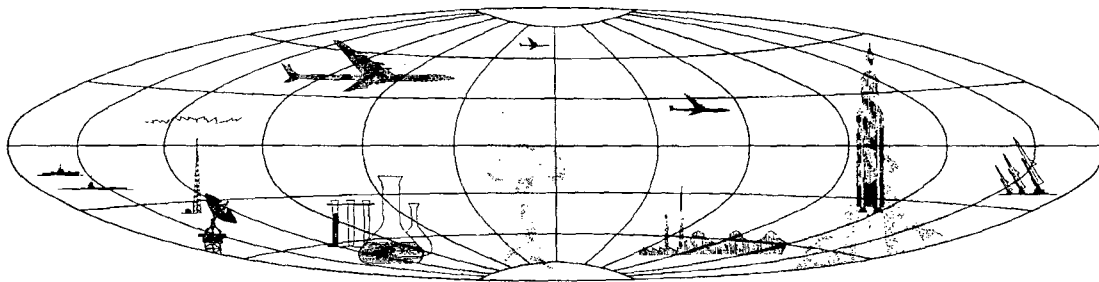
DIA

Handle Via ~~TALENT-KEYHOLE~~ Control Only

WARNING

This document contains classified information affecting the national security of the United States within the meaning of the espionage laws U. S. Code Title 18, Sections 793 and 794. The law prohibits its transmission or the revelation of its contents in any manner to an unauthorized person, as well as its use in any manner prejudicial to the safety or interest of the United States or for the benefit of any foreign government to the detriment of the United States. It is to be seen only by personnel especially indoctrinated and authorized to receive TALENT-KEYHOLE information. Its security must be maintained in accordance with KEYHOLE and TALENT regulations.

NATIONAL PHOTOGRAPHIC INTERPRETATION CENTER



~~TOP SECRET~~

GROUP 1
Excluded from automatic
downgrading and declassification

~~TOP SECRET RUFF~~

Handle Via
TALENT-KEYHOLE
Control System Only

TCS-10646/64
NPIC/R-5109/64

PREFACE

This report is one in a series on Soviet Ground Force and logistic installations being prepared for a DIA/CIA Panel. The series is being coordinated, published and disseminated by NPIC. The photographic analysis is being performed by the NPIC Photographic Analysis Group, the CIA Photographic Intelligence Division (NPIC), and the Production Center 1Plc (DIA). The photographic analysis for this particular report was performed by the NPIC Photographic Analysis Group.

In the interest of uniformity, the titles and letter designators for the facilities observed at these installations are identical with those appearing in the project requirement. When a specific facility is not observed both its title and letter designator are omitted in the report.

Titles and letter designators for the various facilities are as follows: (A) railroad service, (B) road service, (C) landing strips, (D) administrative and troop housing areas, (E) storage areas, (F) ammunition storage areas, (G) POL storage areas, (H) other buildings and facilities, (J) equipment storage/maintenance areas, (K) athletic fields, (L) small-arms firing ranges, (M) driver training areas, (N) tank/assault gun firing ranges, (P) flat trajectory firing ranges, (Q) artillery emplacements (batteries), (R) infantry or combined arms field training area or courses, (S) special training facilities, (T) unidentified facilities or tracking activity.

- 1 -

~~TOP SECRET RUFF~~

Handle Via
TALENT-KEYHOLE
Control System Only

~~TOP SECRET RUFF~~

Handle Via
TALENT-KEYHOLE
Control System Only

TCS-10646/64
NPIC/R-5109/64

KOMMUNARSK ARMY BARRACKS EAST
48-28N 038-48E
KOMMUNARSK, LUGANSKAYA OBLAST, USSR
KIYEV MD

AL No:

COMOR No:

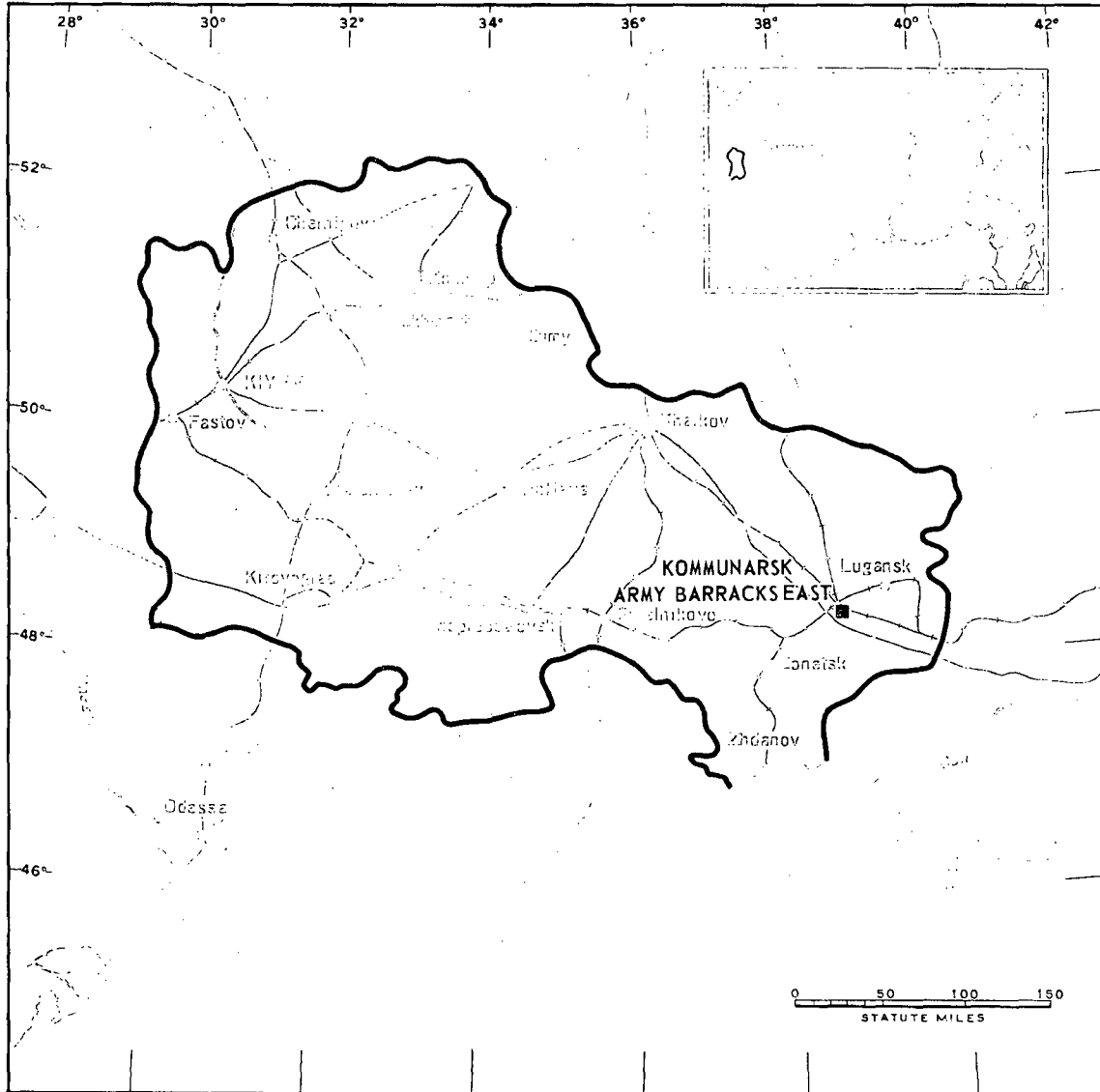


FIGURE 1. LOCATION OF KOMMUNARSK ARMY BARRACKS EAST.

NPIC J-6198 (1/65)

- 2 -

~~TOP SECRET RUFF~~

Handle Via
TALENT-KEYHOLE
Control System Only

Handle Via
TALENT-KEYHOLE
Control System Only

TCS-10646/64
NPIC/R-5109/64

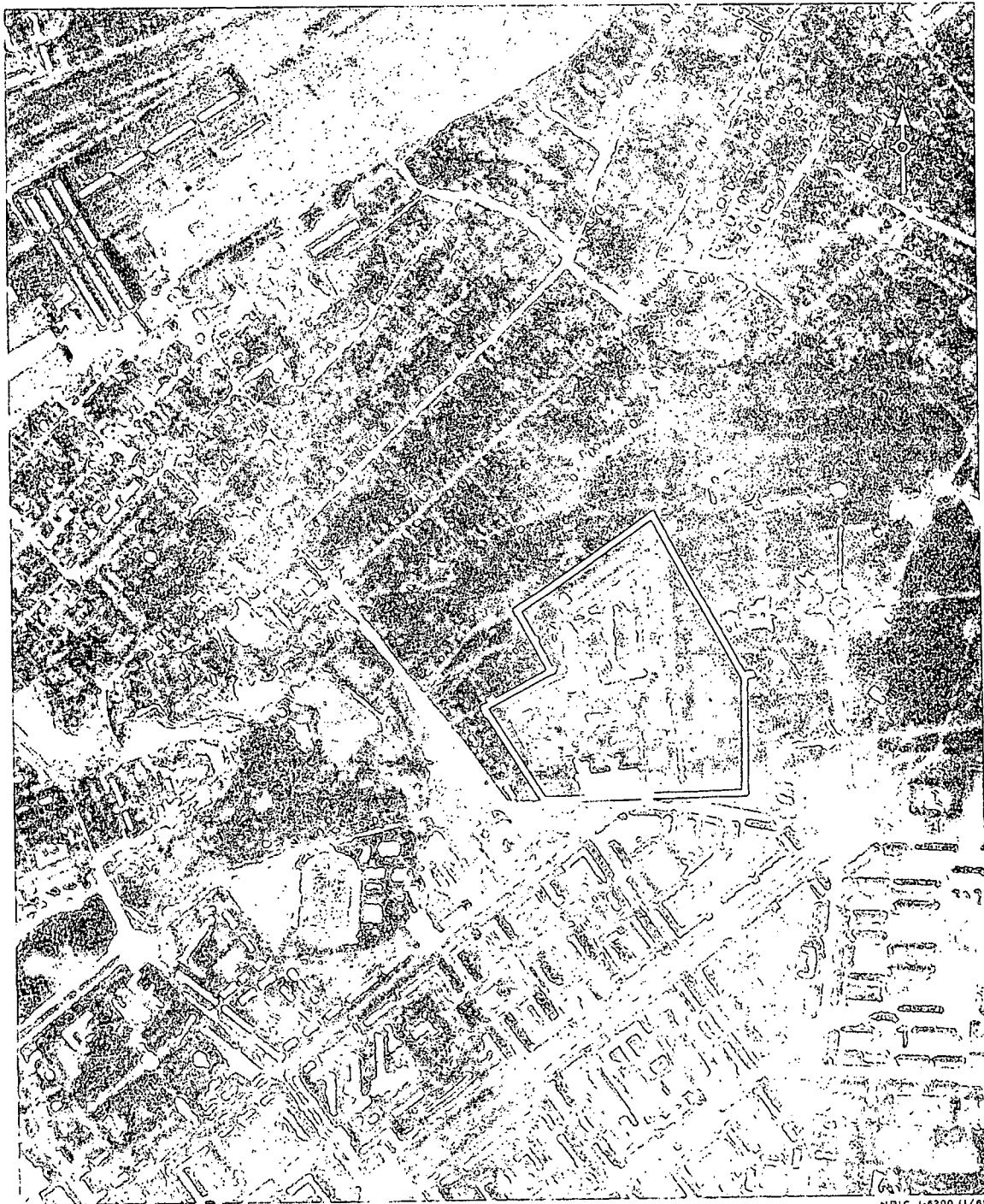


FIGURE 2. KOMMUNARSK ARMY BARRACKS EAST, USSR, JUNE 1964.

NPIC J-6200 (11/65)

Handle Via
TALENT-KEYHOLE
Control System Only

~~TOP SECRET RUFF~~

Handle Via
TALENT-KEYHOLE
Control System Only

TCS-10646/64
NPIC/R-5109/64

SUMMARY

Kommunarsk Army Barracks East is located in the east central sector of Kommunarsk (formerly Voroshilovsk) (Figure 1).

This secured installation covers 45 acres and contains one barracks/administration building, 3 vehicle sheds, 5 storage, and 13 support

buildings (Figures 2 and 3).

The area was covered by 9 KEYHOLE missions between April 1962 and August 1964. The installation appeared active during this period, and no changes in facilities were observed.

DESCRIPTION OF INSTALLATION

Road Service

All-weather roads connect the installation to Kommunarsk.

Administrative and Troop Housing Area

Area D contains 1 barracks/administration and 4 support buildings.

General Storage Area

Area E contains 5 storage buildings.

Equipment Storage/Maintenance Areas

Area J contains 2 L-shaped vehicle sheds, one 510 by 80 feet with a 460- by 80-foot wing; the other 360 by 60 feet with a 210- by 60-foot wing. The area also contains a 600- by 80-foot vehicle shed and 9 support buildings.

- 4 -

~~TOP SECRET RUFF~~

Handle Via
TALENT-KEYHOLE
Control System Only

Handle Via
TALENT-KEYHOLE
Control System Only

TCS-10646/64
NPIC/R-5109/64

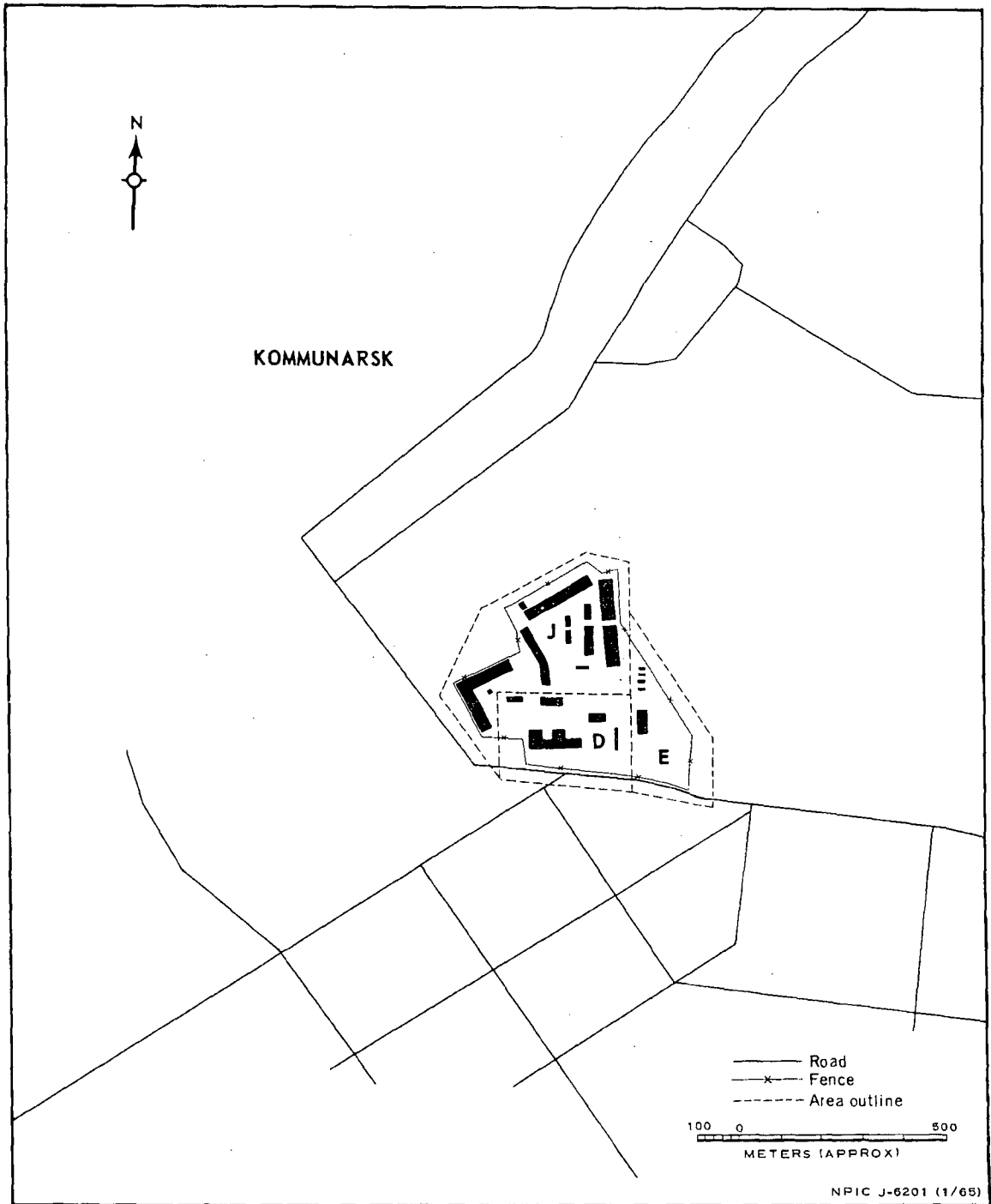


FIGURE 3. KOMMUNARSK ARMY BARRACKS EAST. Sketch compiled from [redacted] June 1964.

Handle Via
TALENT-KEYHOLE
Control System Only

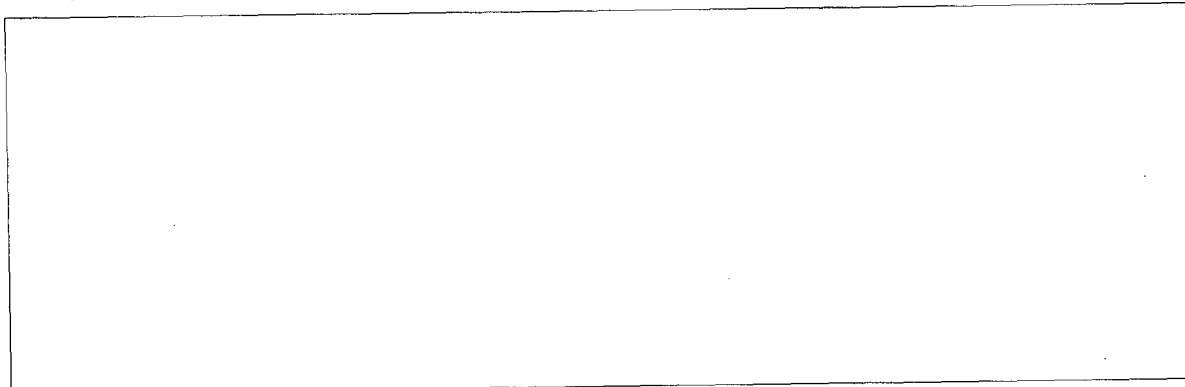
~~TOP SECRET RUFF~~

Handle Via
TALENT-KEYHOLE
Control System Only

TCS-10646/64
NPIC/R-5109/64

REFERENCES

PHOTOGRAPHY



MAPS OR CHARTS

US Air Target Mosaic, Series 25, Sheet 0234-9959-0-25MA, 1st ed, Jun 54 (SECRET)
US Air Target Chart, Series 200, Sheet 0234-23HL, 2d ed, Oct 62 (SECRET)

REQUIREMENT

C-RR4-81,614 (partial answer)

NPIC PROJECT

11627/64

- 6 -

~~TOP SECRET RUFF~~

Handle Via
TALENT-KEYHOLE
Control System Only

~~TOP SECRET~~

~~TOP SECRET~~