

HR70-14

~~TOP SECRET~~

NPIC/R-5099/64

December 1964

TCS-10636/64

Copy 108

6 Pages



PHOTOGRAPHIC INTERPRETATION REPORT

APPROVED FOR RELEASE -
HISTORICAL COLLECTION
DIVISION DATE: 06-18-2012

SOVIET MILITARY ORDER OF BATTLE KIYEV MD



CIA



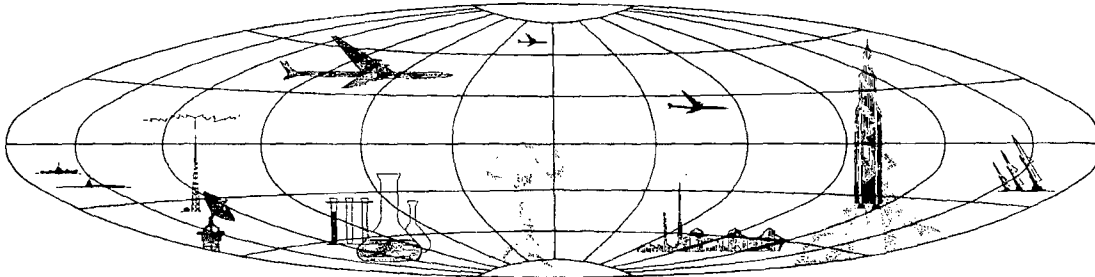
DIA

Handle Via ~~TALENT-KEYHOLE~~ Control Only

WARNING

This document contains classified information affecting the national security of the United States within the meaning of the espionage laws U. S. Code Title 18, Sections 793 and 794. The law prohibits its transmission or the revelation of its contents in any manner to an unauthorized person, as well as its use in any manner prejudicial to the safety or interest of the United States or for the benefit of any foreign government to the detriment of the United States. It is to be seen only by personnel especially indoctrinated and authorized to receive TALENT-KEYHOLE information. Its security must be maintained in accordance with KEYHOLE and TALENT regulations.

NATIONAL PHOTOGRAPHIC INTERPRETATION CENTER



~~TOP SECRET~~

GROUP 1
Excluded from automatic
downgrading and declassification

~~TOP SECRET RUFF~~

Handle Via
TALENT-KEYHOLE
Control System Only

TCS-10636/64
NPIC/R-5099/64

PREFACE

This report is one in a series on Soviet Ground Force and logistic installations being prepared for a DIA/CIA Panel. The series is being coordinated, published and disseminated by NPIC. The photographic analysis is being performed by the NPIC Photographic Analysis Group, the CIA Photographic Intelligence Division (NPIC), and the Production Center 1P1c (DIA). The photographic analysis for this particular report was performed by the NPIC Photographic Analysis Group.

In the interest of uniformity, the titles and letter designators for the facilities observed at these installations are identical with those appearing in the project requirement. When a specific facility is not observed both its title and letter designator are omitted in the report.

Titles and letter designators for the various facilities are as follows: (A) railroad service, (B) road service, (C) landing strips, (D) administrative and troop housing areas, (E) storage areas, (F) ammunition storage areas, (G) POL storage areas, (H) other buildings and facilities, (J) equipment storage/maintenance areas, (K) athletic fields, (L) small-arms firing ranges, (M) driver training areas, (N) tank/assault gun firing ranges, (P) flat trajectory firing ranges, (Q) artillery emplacements (batteries), (R) infantry or combined arms field training area or courses, (S) special training facilities, (T) unidentified facilities or tracking activity.

- 1 -

~~TOP SECRET RUFF~~

Handle Via
TALENT-KEYHOLE
Control System Only

Handle Via
TALENT-KEYHOLE
Control System Only

TCS-10636/64
NPIC/R-5099/64

KREMENCHUG ARMY BARRACKS LENINA
(45-05N 033-26E)
KREMENCHUG, CHERKASSKAYA OBLAST, USSR
KIYEV MD

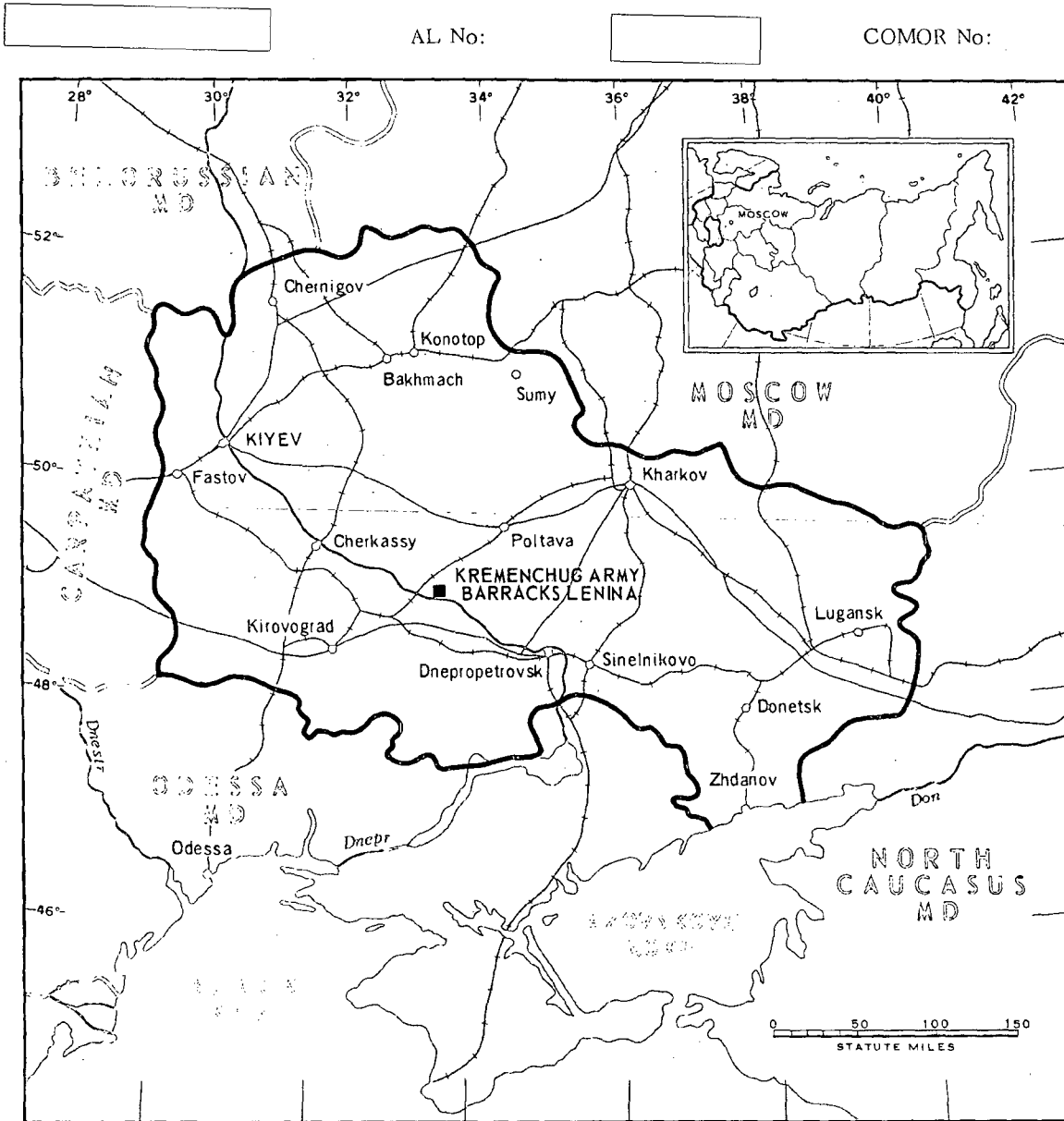


FIGURE 1. LOCATION OF KREMENCHUG ARMY BARRACKS LENINA.

NPIC J-6100 (12/64)

Handle Via
TALENT-KEYHOLE
Control System Only

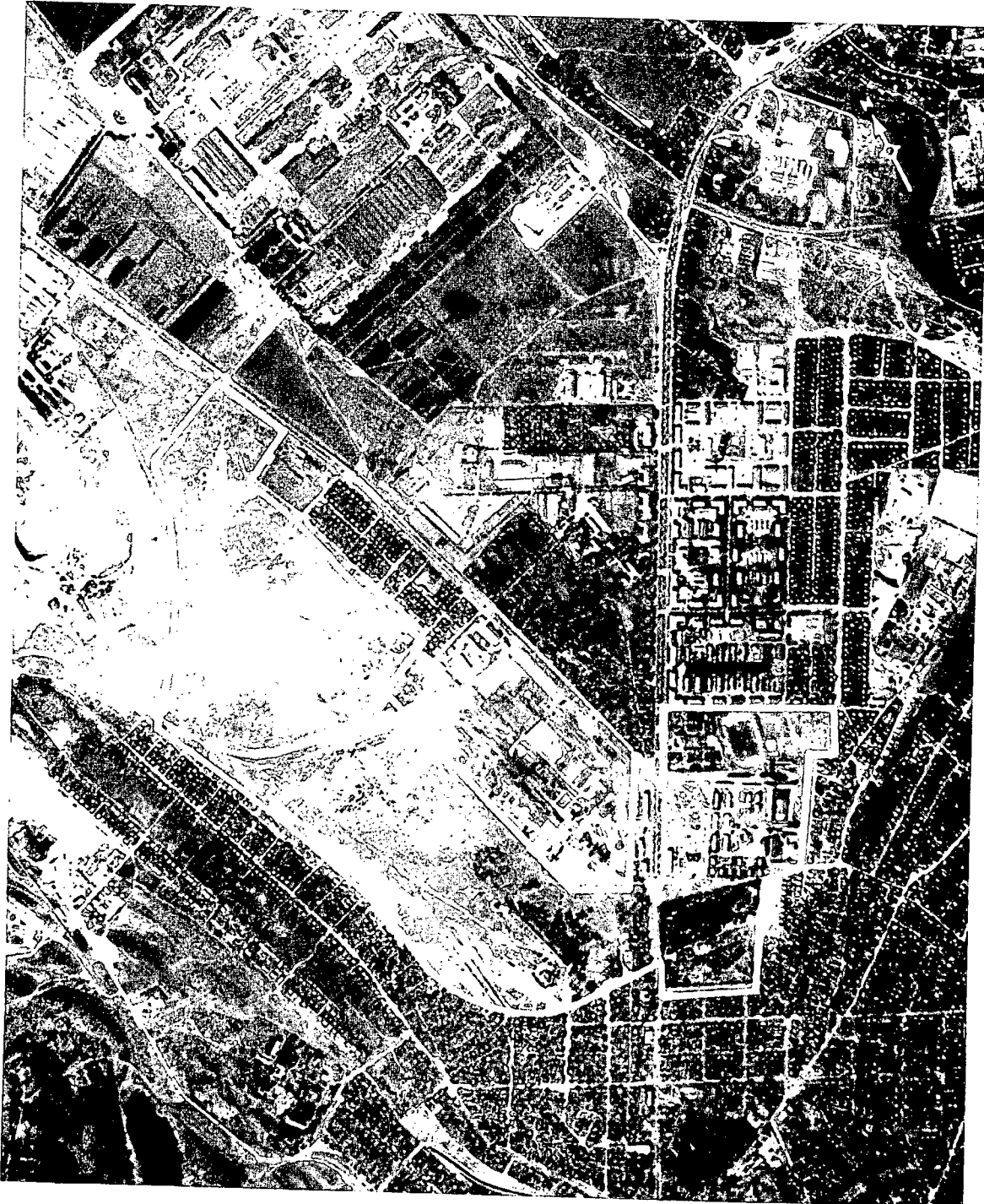


FIGURE 2. KREMENCHUG ARMY BARRACKS LENINA, USSR, JUNE 1964.

NPIC J-8181 (12/64)

~~TOP SECRET RUFF~~

Handle Via
TALENT-KEYHOLE
Control System Only

TCS-10636/64
NPIC/R-5099/64

SUMMARY

Kremenchug Army Barracks Lenina is located on the northern edge of Kremenchug, USSR (Figure 1).

The installation (Figures 2 and 3) covers approximately 340 acres and contains 3 administration buildings, 10 officers/dependents quarters, 3 equipment storage buildings, 9 barracks, 3 probable barracks, 4 storage buildings, 5 support/storage buildings, one probable vehicle maintenance building, 2 ammunition storage buildings, 7 ammunition storage buildings/bunkers, and a probable motor park. Training

facilities include 2 small-arms firing ranges, an athletic field, a probable wheeled-vehicle driver-training course, and a probable infantry or combined-arms training area.

The installation was covered on 5 KEYHOLE missions between December 1961 and August 1964. The only significant change since December 1961 has been the removal of 2 storage buildings. Comparative analysis reveals a constant level of activity during this period in the summer with a decline during the winter months.

DESCRIPTION OF INSTALLATION

Railroad Service

A rail line with 3 spurs is immediately west and probably serves the installation.

Road Service

An all-weather primary road provides access to Kremenchug and also to the Kremenchug Airfield.

Administrative and Troop Housing Areas

Area D1 contains one large, irregular administration building.

Area D2 contains 2 multistory administration buildings, 9 multistory barracks, 3 smaller probable barracks, 10 officers/dependents quarters, and 5 storage/support buildings. No significant changes have been observed since December 1961. The area appeared active throughout this period.

General Storage Area

Area E now contains 4 storage buildings. Two buildings have been removed since December 1961.

Ammunition Storage Areas

Area F1 contains 7 small ammunition storage buildings/bunkers which are dispersed in a secured wooded area.

Area F2 contains 2 small ammunition storage buildings.

Equipment Storage/Maintenance Area

Area J contains one probable vehicle-maintenance building (200 by 90 feet), 3 equipment/storage buildings, and one probable motor park (200 by 150 feet).

Athletic Field

Area K is an athletic field.

Small-Arms Firing Ranges

Area L contains 2 small-arms firing ranges (950 by 50 feet, and 750 by 50 feet). The ranges each contain 2 firing lanes.

Driver-Training Areas

Area M is a probable wheeled-vehicle driver

~~TOP SECRET RUFF~~

Handle Via
TALENT-KEYHOLE
Control System Only

Handle Via
TALENT-KEYHOLE
Control System Only

TCS-10636/64
NPIC/R-5099/64

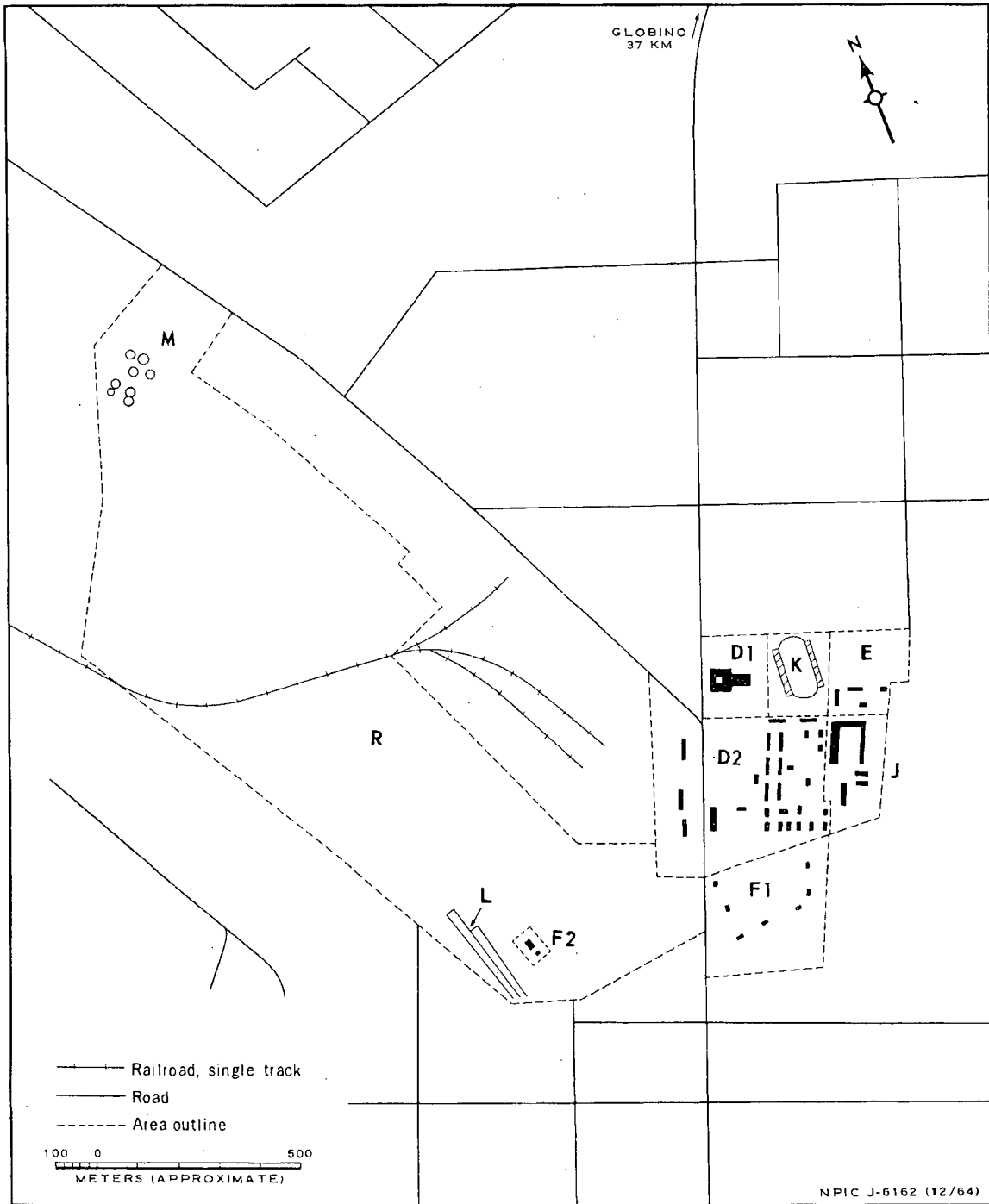


FIGURE 3. KREMENCHUG ARMY BARRACKS LENINA. Sketch compiled from [redacted] June 1964.

Handle Via
TALENT-KEYHOLE
Control System Only

~~TOP SECRET RUFF~~

Handle Via
TALENT-KEYHOLE
Control System Only

TCS-10636/64
NPIC/R-5099/64

training area with 2 figure-8 courses and 4 small circular courses.

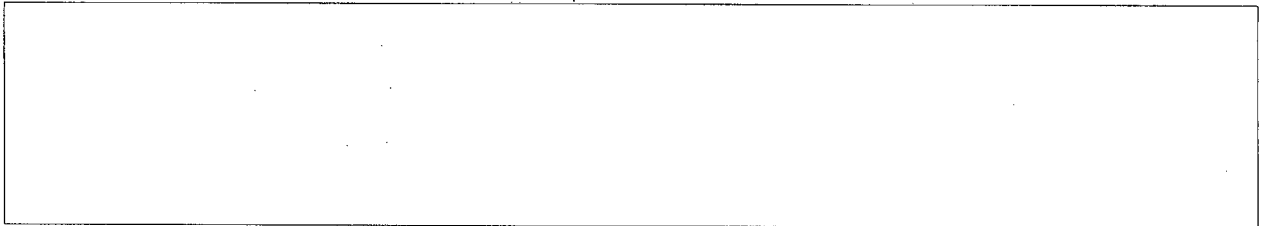
arms training area with extensive vehicle track-
age and ground scarring throughout the area.
The level of activity appeared to be high on
photography of June 1964.

Infantry or Combined-Arms Field Training Area
or Courses

Area R is a probable infantry or combined-

REFERENCES

PHOTOGRAPHY



MAPS OR CHARTS

US Air Target Chart, Series 200, Sheet 0233-20HL, 3d ed, Jun 62 (SECRET)

REQUIREMENT

C-RR4-81,614 (partial answer)

NPIC PROJECT

11627/64

- 6 -

~~TOP SECRET RUFF~~

Handle Via
TALENT-KEYHOLE
Control System Only

~~TOP SECRET~~

~~TOP SECRET~~