

HR70-14

~~TOP SECRET~~

Copy 108  
7 Pages

TCS-80133/65

February 1965

PHOTOGRAPHIC INTERPRETATION REPORT

APPROVED FOR RELEASE -  
HISTORICAL COLLECTION  
DIVISION DATE: 06-18-2012

# SOVIET MILITARY ORDER OF BATTLE KIYEV MD



CIA



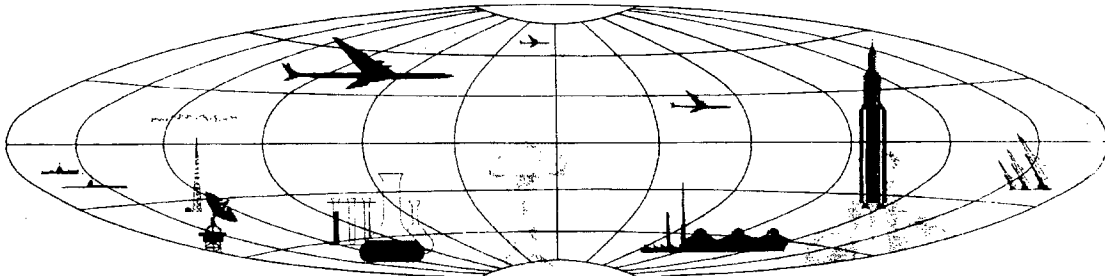
DIA

Handle Via **TALENT - KEYHOLE** Control Only

WARNING

This document contains classified information affecting the national security of the United States within the meaning of the espionage laws U. S. Code Title 18, Sections 793 and 794. The law prohibits its transmission or the revelation of its contents in any manner to an unauthorized person, as well as its use in any manner prejudicial to the safety or interest of the United States or for the benefit of any foreign government to the detriment of the United States. It is to be seen only by personnel especially indoctrinated and authorized to receive TALENT-KEYHOLE information. Its security must be maintained in accordance with KEYHOLE and TALENT regulations.

NATIONAL PHOTOGRAPHIC INTERPRETATION CENTER



~~TOP SECRET~~

GROUP 1  
Excluded from automatic  
downgrading and declassification

PREFACE

This report is one in a series on Soviet Ground Force and Logistic installations being prepared for a DIA/CIA Panel. The series is being coordinated, published and disseminated by NPIC. The photographic analysis is being performed by the NPIC Photographic Analysis Group, the CIA Photographic Intelligence Division (NPIC), and the Production Center 1P1a (DIA). The photographic analysis for this particular report was performed by the NPIC Photographic Analysis Group.

In the interest of uniformity, the titles and letter designators for the facilities observed at these installations are identical with those appearing in the project requirement. When a specific facility is not observed both its title and letter designator are omitted in the report.

Titles and letter designators for the various facilities are as follows: (A) railroad service, (B) road service, (C) landing strips, (D) administrative and troop housing areas, (E) storage areas, (F) ammunition storage areas, (G) POL storage areas, (H) other buildings and facilities, (J) equipment storage/maintenance areas, (K) athletic fields, (L) small arms firing ranges, (M) driver training areas, (N) tank/assault gun firing ranges, (P) flat trajectory firing ranges, (Q) artillery emplacements (batteries), (R) infantry or combined arms field training area or courses, (S) special training facilities, (T) unidentified facilities or tracking activity.

VOLNOYE TRAINING AREA SAMARA RIVER BEND

(48-43N 035-22E)

VOLNOYE, DNEPROPETROVSKAYA OBLAST, USSR

KIYEV MD

TA No:

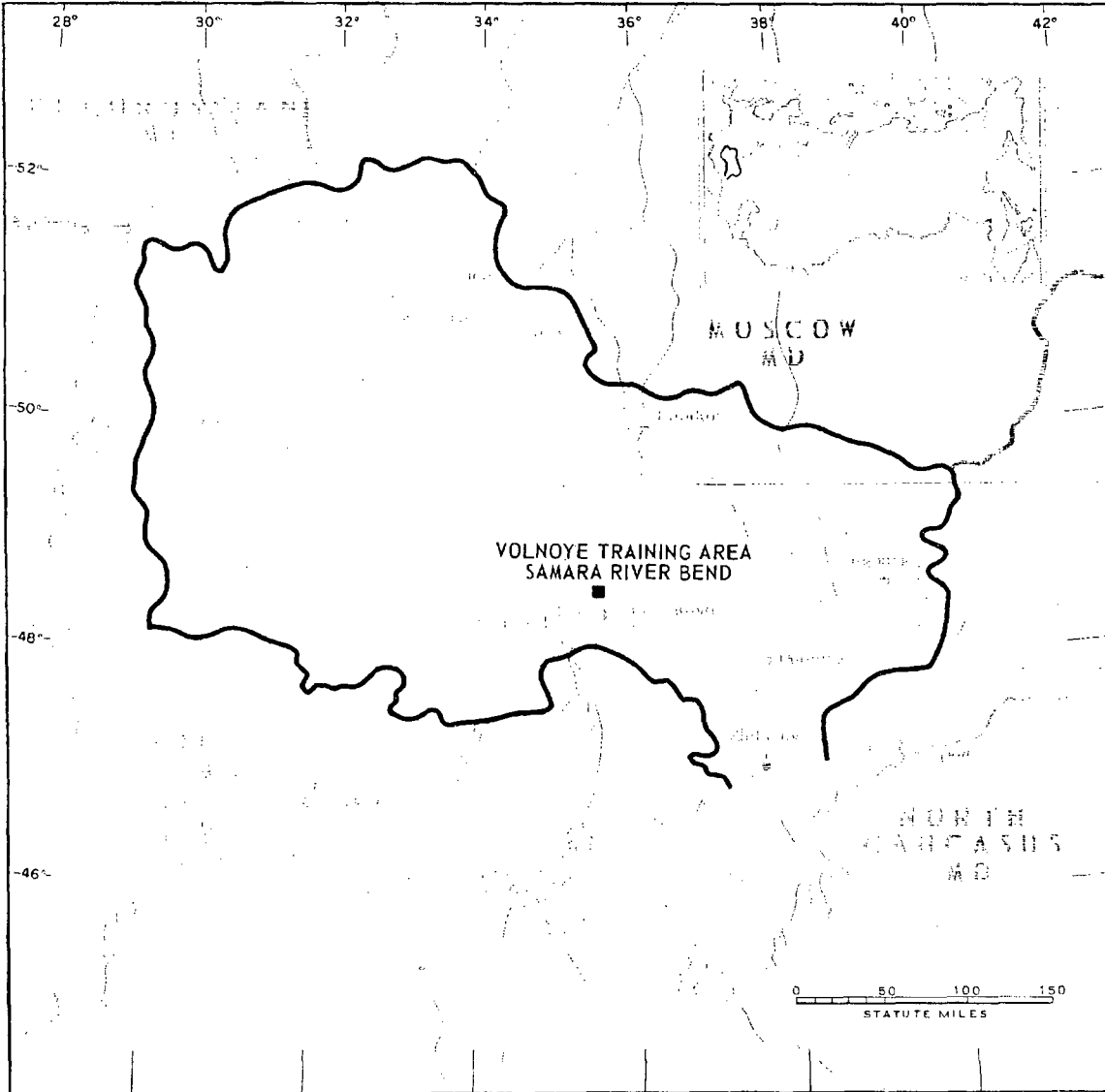


FIGURE 1. LOCATION OF VOLNOYE TRAINING AREA SAMARA RIVER BEND.

NPIC J-7782 (1/65)

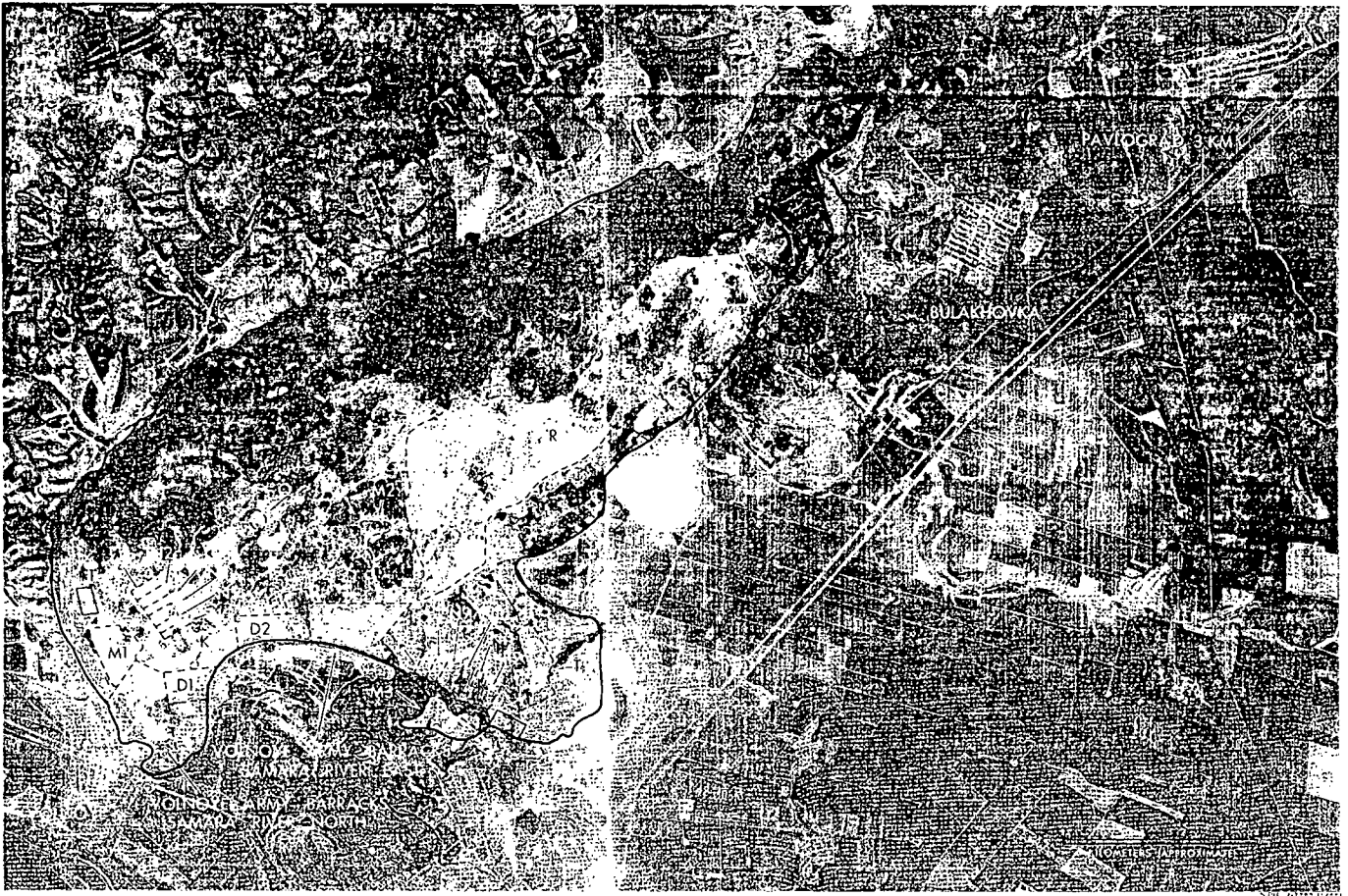


FIGURE 2. VOLNOYE TRAINING AREA SAMARA RIVER BEND, VOLNOYE, USSR, APRIL 1962.

# TOP SECRET CHESS RUFF

Handle Via  
TALENT-KEYHOLE  
Control System Only

TCS-80133/65

## SUMMARY

Volnoye Training Area Samara River Bend\* extends from immediately east of Volnoye to a point 25 kilometers (km) east of Volnoye (Figure 1). The maneuver area is supported by 2 barracks areas, both at the western boundary of the maneuver area. One barracks area is immediately east of Volnoye and the other is 7 km south-southeast of Volnoye. The barracks areas are reported in another NPIC report.

The maneuver area covers approximately 55,910 acres and contains 3 driver-training courses, 1 tracked-vehicle, 1 wheeled-vehicle, and 1 tracked/wheeled-vehicle; 1 field training area (possibly combined arms), 12 moving-target tank/assault-gun firing ranges, 2 bivouac areas, 2 secured storage areas, 3 probable

\*Formerly known as the Volnoye Army Barracks and Maneuver Area Peschanka [redacted]

small-arms ranges, 1 athletic field, and 20 miscellaneous support buildings (Figure 2).

The area was covered by a TALENT mission in February 1960 and by 8 KEYHOLE missions from April 1962 to August 1964. Comparative analysis reveals that in the February 1960 to April 1962 period 2 secured storage areas, 11 range control towers, and 10 support buildings were constructed, and an unidentified tracking activity was observed. Twenty-five target runs were constructed at the tank/assault-gun firing ranges between April 1962 and December 1963. The overall level of track activity ranged from medium to heavy. Winter training was observed during February 1960 at the driver-training courses and at 11 of the tank/assault-gun firing ranges. During December 1963 winter training was observed at a tank/assault-gun firing range.

## DESCRIPTION OF INSTALLATION

### Road Service

A secondary probably all-weather road connects the area with Volnoye, Novomoskovsk, and Pavlograd.

### Administrative and Troop Housing Areas

Areas D1 and D2 are bivouac areas providing temporary billeting facilities.

The main administration and permanent-type billeting and other support are provided by the barracks areas on the west boundary of the maneuver area.

### Ammunition Storage Areas

Area F1 contains 14 storage buildings, 12 possible ammunition storage buildings, and 5 support buildings.

Area F2 contains 14 storage buildings 12 possible ammunition storage buildings, and 5 support buildings.

The two areas were constructed between February 1960 and April 1962.

### Other Buildings and Facilities

Six support buildings and 5 range control towers support ranges N1 through N6. Three support buildings and 6 range control towers support ranges N7 through N12. The maneuver area also contains 1 other support building. All of the buildings and towers were constructed between February 1960 and April 1962.

### Athletic Field

Area K is an athletic field.

- 5 -

Handle Via  
TALENT-KEYHOLE  
Control System Only

TOP SECRET CHESS RUFF

Small-Arms Firing Ranges

Area L contains 3 probable small-arms ranges, one 680 by 35 feet, one 330 by 35 feet, and one 100 by 35 feet.

Driver-Training Areas

Area M1 is a tracked -vehicle driver-training course, Area M2 is a wheeled-vehicle driver-training course, and Area M3 is a tracked/wheeled-vehicle driver training course.

Tank/Assault-Gun Firing Ranges

Area N1 is a 4,200-foot range containing probably three 2,300-foot firing lanes and 3 moving-target runs.

Area N2 is a 4,550-foot range containing probably three 2,300-foot firing lanes and 6 moving-target runs. Five of the target runs were constructed between April 1962 and December 1963.

Area N3 is a 4,550-foot range containing probably three 2,600-foot firing lanes and 4 moving-target runs.

Area N4 is a 2,950-foot range containing probable static firing positions and 4 moving-target runs. One target run was constructed between April 1962 and December 1963.

Area N5 is a 2,950-foot range containing four 2,600-foot firing lanes and 3 moving-target runs. The 3 target runs were constructed between April 1962 and December 1963.

Area N6 is a 2,600-foot range containing probably three 2,600-foot firing lanes and 4 moving-target runs.

Area N7 is a 2,300-foot range containing probably three 1,750-foot firing lanes and 5 moving-target runs. The 5 target runs were constructed between April 1962 and December 1963.

Area N8 is a 2,600-foot range containing probably three 1,750-foot firing lanes and 6 moving-target runs. The 6 target runs were constructed between April 1962 and December 1963.

Area N9 is a 4,550-foot range containing probably three 2,650-foot firing lanes and 3 moving-target runs.

Area N10 is a 4,200-foot range containing probably three 2,650-foot firing lanes and 3 moving-target runs.

Area N11 is a 3,900-foot range containing probably three 3,550-foot firing lanes and 3 moving-target runs.

Area N12 is a 2,950-foot range containing a static firing line and 5 moving-target runs. The 5 target runs were constructed between April 1962 and December 1963.

Ranges N1 through N11 were active in February 1960 and range N10 was active in December 1963.

Artillery Emplacements (Batteries)

Area Q contains 4 possible field artillery emplacements (2 with 4 positions and 2 with 3 positions). The area was first observed in April 1962. Photo quality and scale preclude determining whether these are active training facilities.

Field Training Area (Possibly Combined Arms)

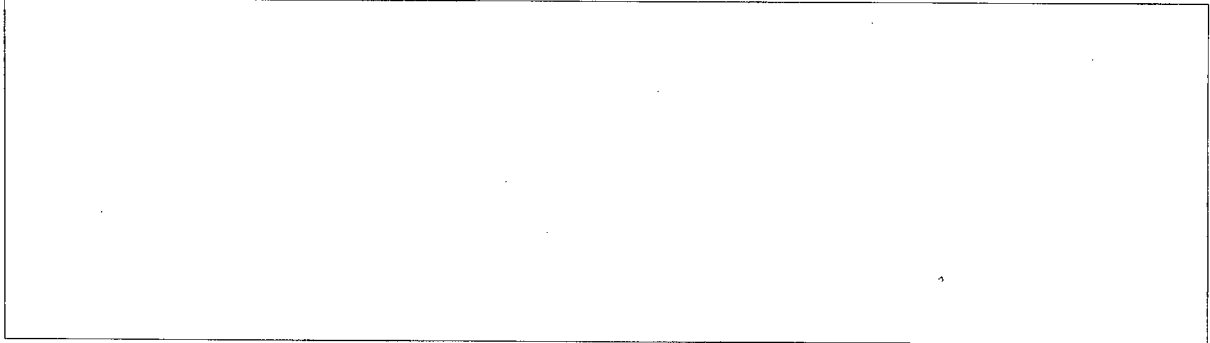
Area R is a field training area (possibly combined arms).

Unidentified Tracking Activity

Area T contains unidentified tracking activity similar to areas identified as combined-arms field training areas.

REFERENCES

PHOTOGRAPHY



MAPS OR CHARTS

US Air Target Chart, Series 200, Sheet 0231-21AL, 2d ed, Nov 60 (SECRET)

US Air Target Mosaic, Series 50, Sheet 0234-21 3MA, 1st ed, Jul 59 (CONFIDENTIAL)

DOCUMENTS



Army. PIB-227-60. *Military Installation, Nov-Moskovsk*, Aug 60 (TOP SECRET CHESS)

Army. PIB-TK-74-62. *Nov-Moskovsk Armor Training Installation*, Jul 62 (TOP SECRET RUFF)

REQUIREMENT

C-RR1-81.614 (partial answer)

NPIC PROJECT

11627, 64

~~TOP SECRET~~

~~TOP SECRET~~