

APPROVED FOR
RELEASE-HISTORICAL
COLLECTION DIVISION-HR70-14
DATE: 05-11-2012

[REDACTED]
PHOTOGRAPHIC INTERPRETATION REPORT

SOVIET MILITARY ORDER OF BATTLE BALTIC MD



CIA



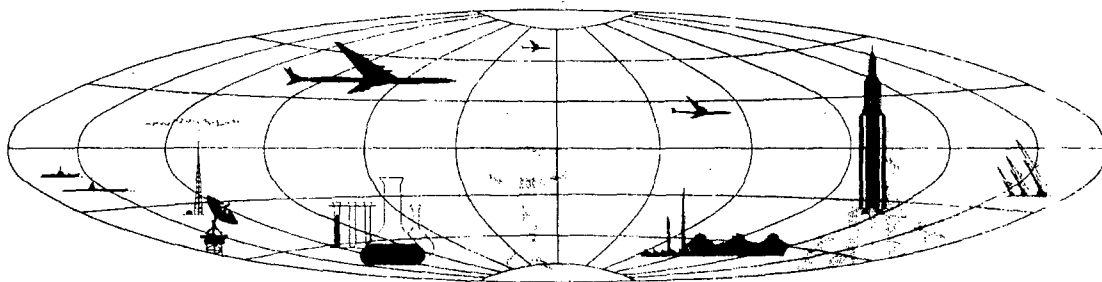
DIA

Handle Via **TALENT - KEYHOLE** Control Only

WARNING

This document contains classified information affecting the national security of the United States within the meaning of the espionage laws U. S. Code Title 18, Sections 793 and 794. The law prohibits its transmission or the revelation of its contents in any manner to an unauthorized person, as well as its use in any manner prejudicial to the safety or interest of the United States or for the benefit of any foreign government to the detriment of the United States. It is to be seen only by personnel especially indoctrinated and authorized to receive TALENT-KEYHOLE information. Its security must be maintained in accordance with KEYHOLE and TALENT regulations.

NATIONAL PHOTOGRAPHIC INTERPRETATION CENTER



~~TOP SECRET~~

GROUP 1
Excluded from automatic
downgrading and
declassification

~~TOP SECRET RUFF~~

TCS-80383/65

PREFACE

This report is one in a series on Soviet Ground Force and Logistic installations being prepared for a DIA/CIA Panel. The series is being coordinated, published and disseminated by NPIC. The photographic analysis is being performed by the NPIC Photographic Analysis Group, the CIA Photographic Intelligence Division (NPIC), and the Production Center 1P1a (DIA). The photographic analysis for this particular report was performed by the Production Center 1P1a.

In the interest of uniformity, the titles and letter designators for the facilities observed at these installations are identical with those appearing in the project requirement. When a specific facility is not observed both its title and letter designator are omitted in the report.

Titles and letter designators for the various facilities are as follows: (A) railroad service, (B) road service, (C) landing strips, (D) administrative and troop housing areas, (E) storage areas, (F) ammunition storage areas, (G) POL storage areas, (H) other buildings and facilities, (J) equipment storage/maintenance areas, (K) athletic fields, (L) small arms firing ranges, (M) driver training areas, (N) tank/assault gun firing ranges, (P) flat trajectory firing ranges, (Q) artillery emplacements (batteries), (R) infantry or combined arms field training areas or courses, (S) special training facilities, (T) unidentified facilities or tracking activity.

- 1 -

~~TOP SECRET RUFF~~

Handle Via
TALENT-KEYHOLE
Control System Only

TCS-80383/65

TAPA ARMY BARRACKS WEST
(59-16N 025-57E)
TAPA, ESTONSKAYA SSR, USSR
BAL TIC MD

BE No:

AL No:

COMOR No:

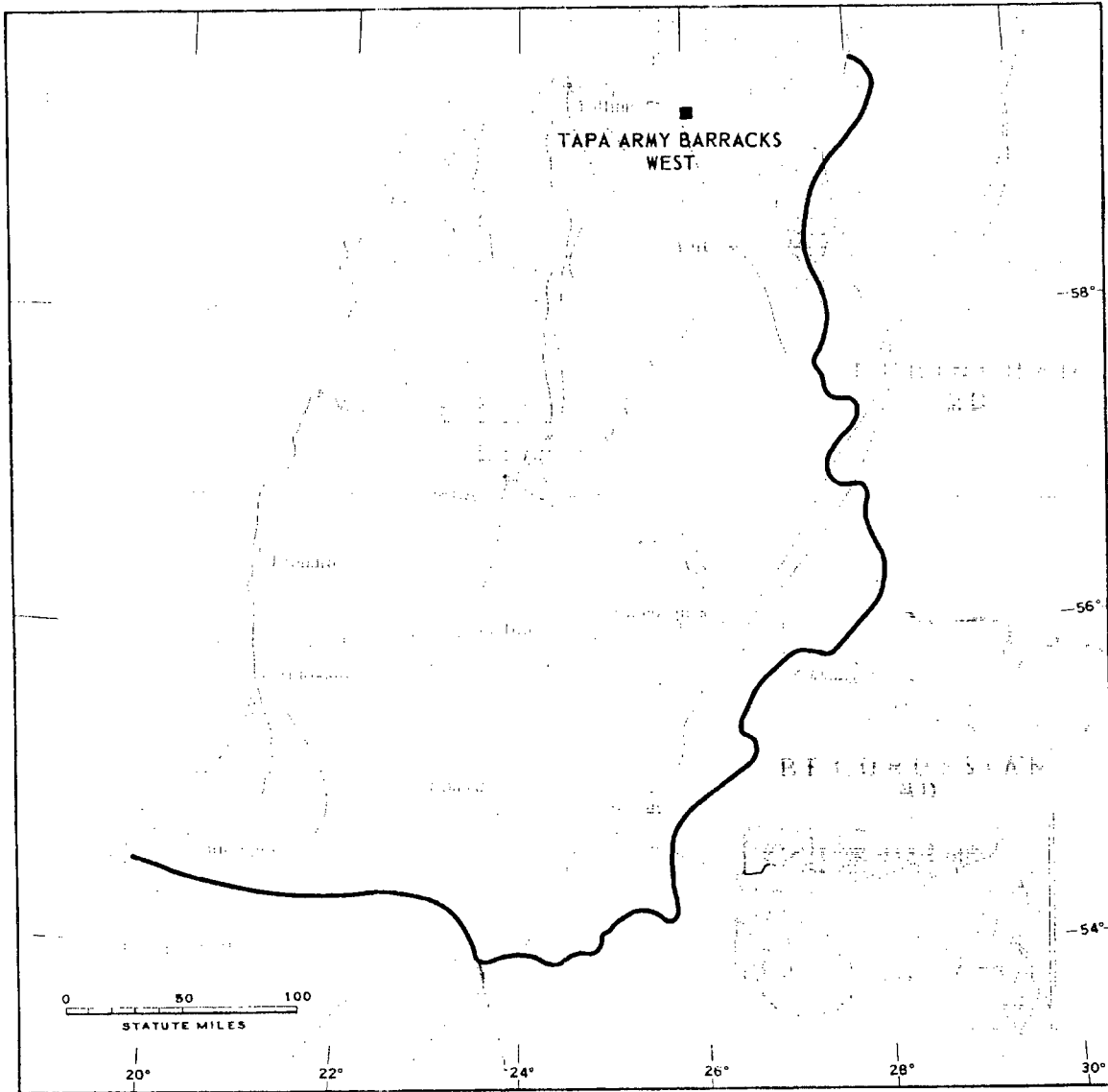


FIGURE 1. LOCATION OF TAPA ARMY BARRACKS WEST.

Handle Via
TALENT-KEYHOLE
Control System Only

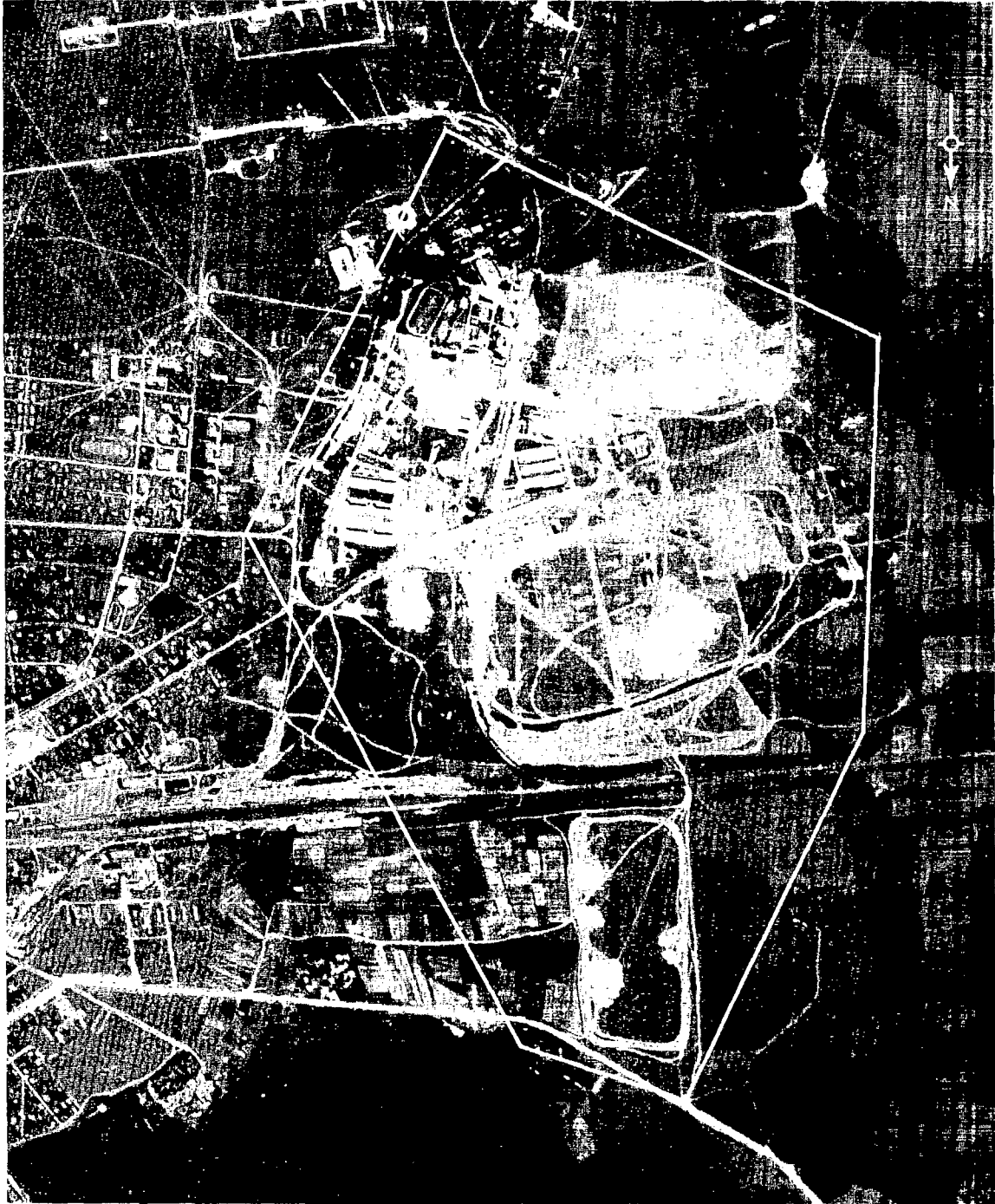


FIGURE 2. TAPA ARMY BARRACKS WEST, TAPA, USSR, JULY 1964.

SUMMARY

Tapa Army Barracks West is located 1 kilometer (km) west of Tapa and 2 km northwest of Tapa Airfield (Figure 1).

The installation covers 290 acres and consists of a barracks and a driver-training area. The barracks area, encompassing 80 acres, contains the following buildings: 5 barracks/administration, 13 dependents quarters, 18 support, 8 storage, 8 barracks, 2 vehicle maintenance, 7 vehicle storage, 1 vehicle park, and

1 athletic field. The driver-training area covers 210 acres and contains various vehicle obstacles (Figures 2 and 3).

The area was covered on 5 KEYHOLE missions between December 1961 and July 1964. Comparative analysis indicates that the level of usage and physical facilities of the barracks area have remained the same since 1961. The driver-training area was being developed in 1961-1962.

DESCRIPTION OF INSTALLATION

Railroad Service

A rail line passes through the area. A large classification yard is 1 km northeast of Tapa Army Barracks West.

Road Service

This installation is served by city streets.

Aircraft Landing Strips

Tapa Airfield is immediately southeast of Tapa Army Barracks West.

Administration and Troop Housing Area

Area D contains 5 multistory barracks/administration buildings, 13 dependents quarters, 11 support buildings, a storage building, and 8 barracks.

General Storage Areas

Area E1 is fenced and contains 5 rectangular open storage areas.

Area E2 contains 3 storage buildings.

Area E3 contains 4 storage buildings and 7 support buildings.

Equipment Storage/Maintenance Areas

Area J1 contains one 100- by 32-foot maintenance building, one []-foot vehicle storage building, one 230- by 110 foot vehicle park, and 1 L-shaped storage and maintenance building measuring 210 by [] feet.

Area J2 contains six 140- by 30-foot vehicle storage buildings and 4 support buildings.

Athletic Field

Area K is an athletic field with an oval track.

Driver-Training Area

Area M is an irregularly shaped driver-training area with vehicle obstacles.

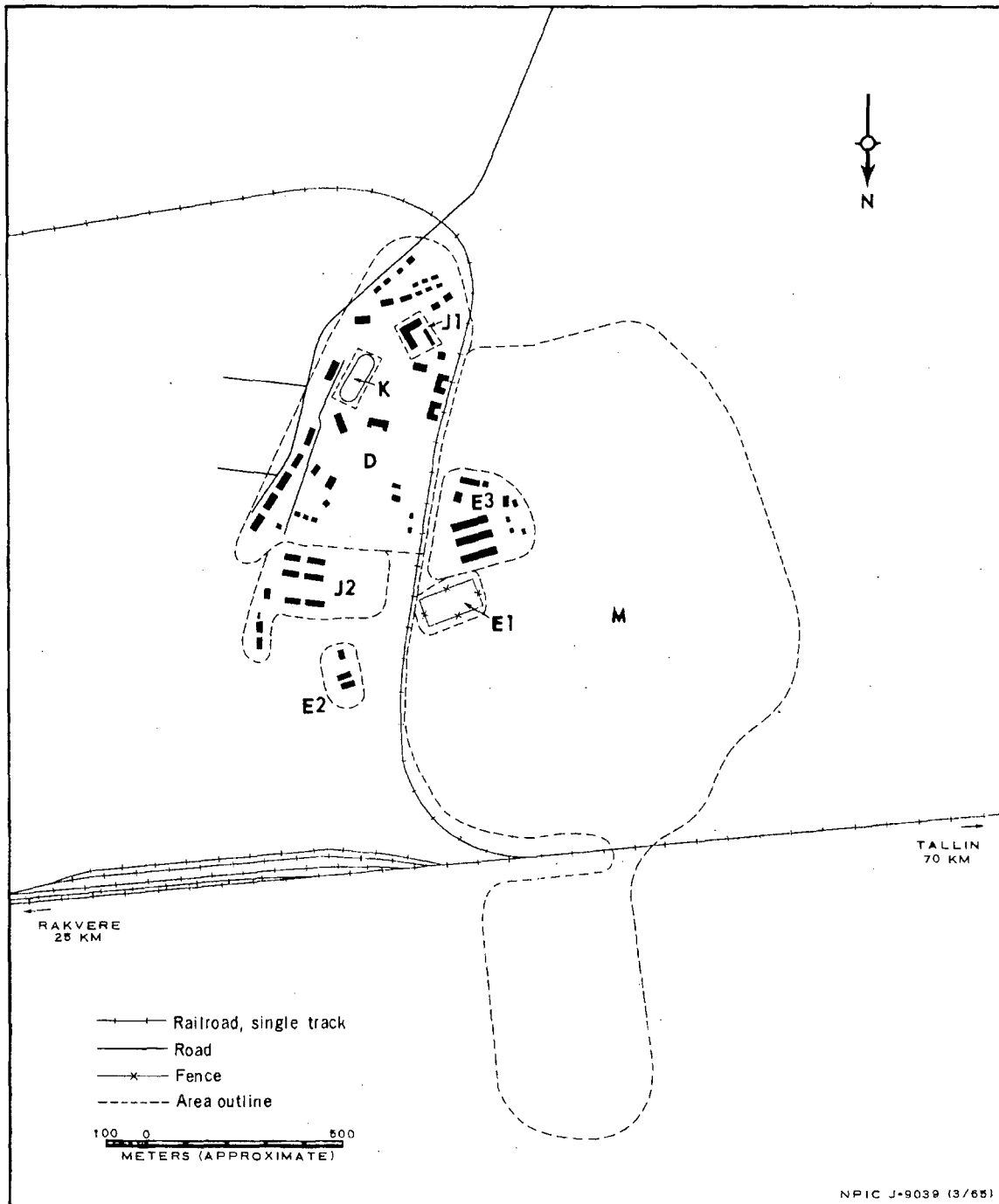


FIGURE 3. TAPA ARMY BARRACKS WEST. Sketch compiled from [redacted] July 1964.

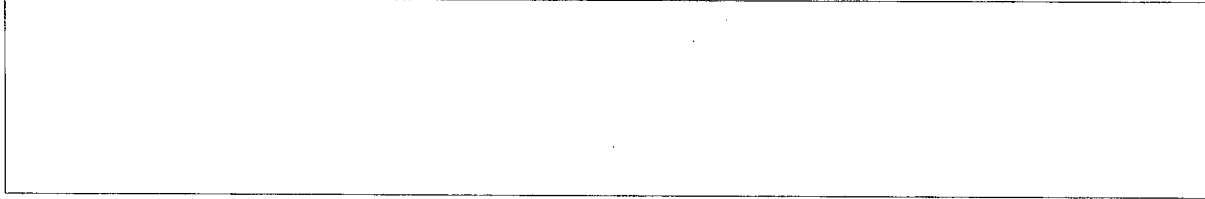
~~TOP SECRET RUFF~~

Handle Via
TALENT-KEYHOLE
Control System Only

TCS-80383/65

REFERENCES

PHOTOGRAPHY



MAPS OR CHARTS

US Air Target Chart, Series 200, Sheet 0153-2HL, 3d ed, Aug 63 (SECRET)

REQUIREMENT

DIAAP-1-15-64 (partial answer)

NPIC PROJECT

11904/64

- 6 -

~~TOP SECRET RUFF~~

Handle Via
TALENT-KEYHOLE
Control System Only

~~TOP SECRET~~

~~TOP SECRET~~