

~~TOP SECRET~~

Copy **108**

6 Pages

April 1965

PHOTOGRAPHIC INTERPRETATION REPORT

APPROVED FOR
RELEASE-HISTORICAL
COLLECTION
DIVISION-HR70-14
DATE: 05-11-2012

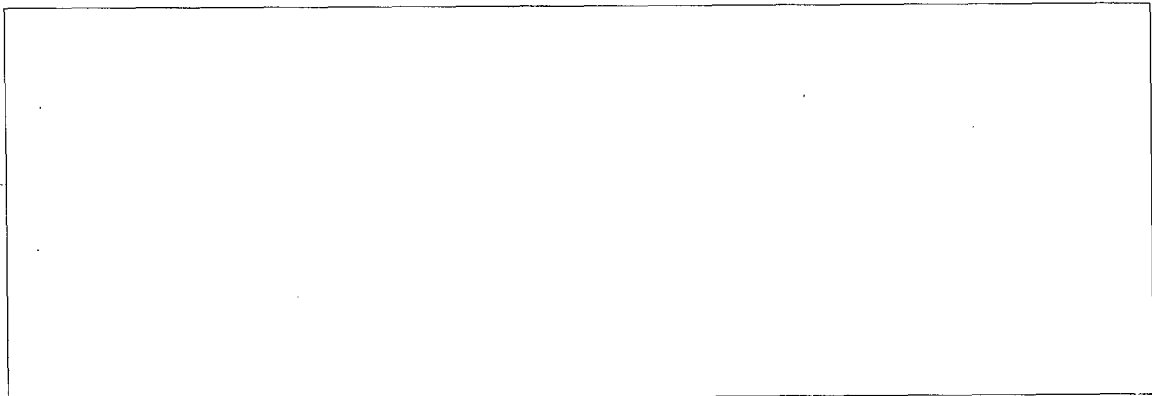
SOVIET MILITARY ORDER OF BATTLE BALTIC MD



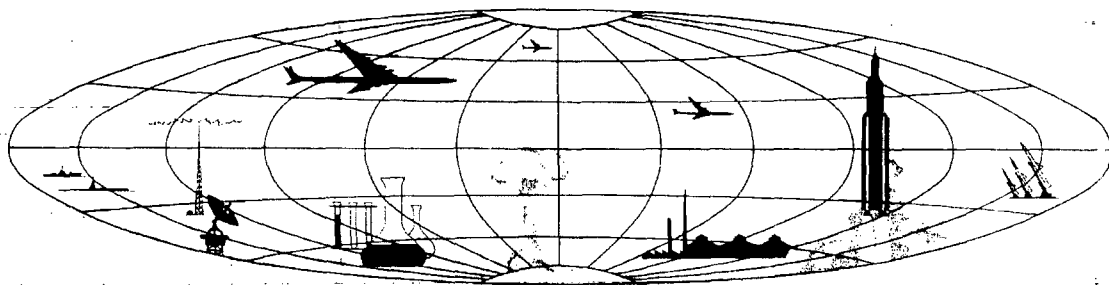
CIA



DIA



NATIONAL PHOTOGRAPHIC INTERPRETATION CENTER



~~TOP SECRET~~

Excluded from automatic
downgrading and declassification

~~TOP SECRET RUFF~~

PREFACE

This report is one in a series on Soviet Ground Force and Logistic installations being prepared for a DIA/CIA Panel. The series is being coordinated, published and disseminated by NPIC. The photographic analysis is being performed by the NPIC Photographic Analysis Group, the CIA Photographic Intelligence Division (NPIC), and the Production Center 1P1a (DIA). The photographic analysis for this particular report was performed by the Production Center 1P1a.

In the interest of uniformity, the titles and letter designators for the facilities observed at these installations are identical with those appearing in the project requirement. When a specific facility is not observed both its title and letter designator are omitted in the report.

Titles and letter designators for the various facilities are as follows: (A) railroad service, (B) road service, (C) landing strips, (D) administrative and troop housing areas, (E) storage areas, (F) ammunition storage areas, (G) POL storage areas, (H) other buildings and facilities, (J) equipment storage/maintenance areas, (K) athletic fields, (L) small arms firing ranges, (M) driver training areas, (N) tank/assault gun firing ranges, (P) flat trajectory firing ranges, (Q) artillery emplacements (batteries), (R) infantry or combined arms field training areas or courses, (S) special training facilities, (T) unidentified facilities or tracking activity.

~~TOP SECRET RUFF~~

~~TOP SECRET RUFF~~

SOVETSK ARMY BARRACKS TAURAGE SOUTHWEST

(55-14N 022-15E)

TAURAGE, LITOVSKAYA SSR, USSR

BALTIC MD

AL No:

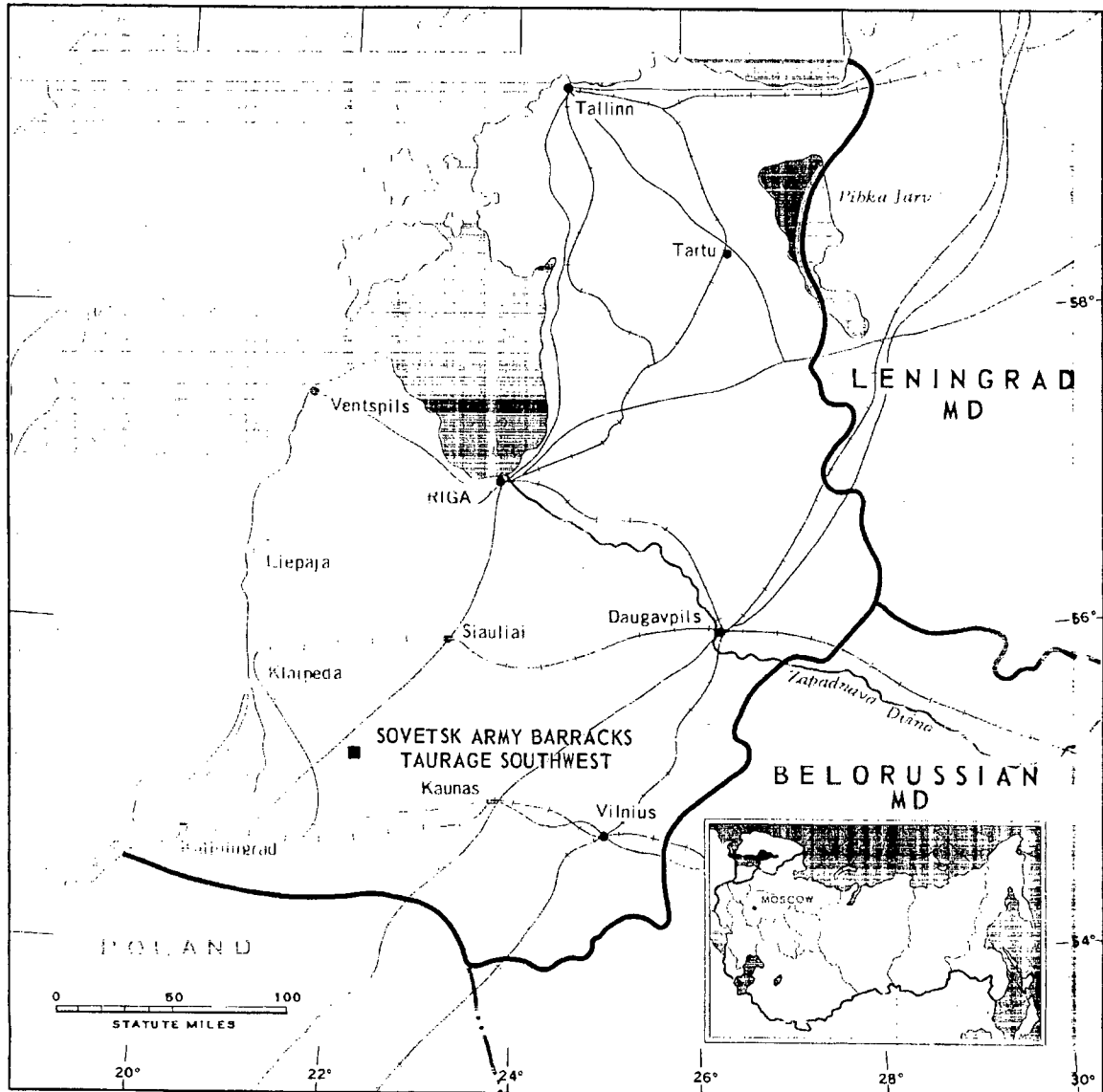


FIGURE 1. LOCATION OF SOVETSK ARMY BARRACKS TAURAGE SOUTHWEST.

NPIC J-0228 (4/66)

~~TOP SECRET RUFF~~

~~TOP SECRET RUFF~~

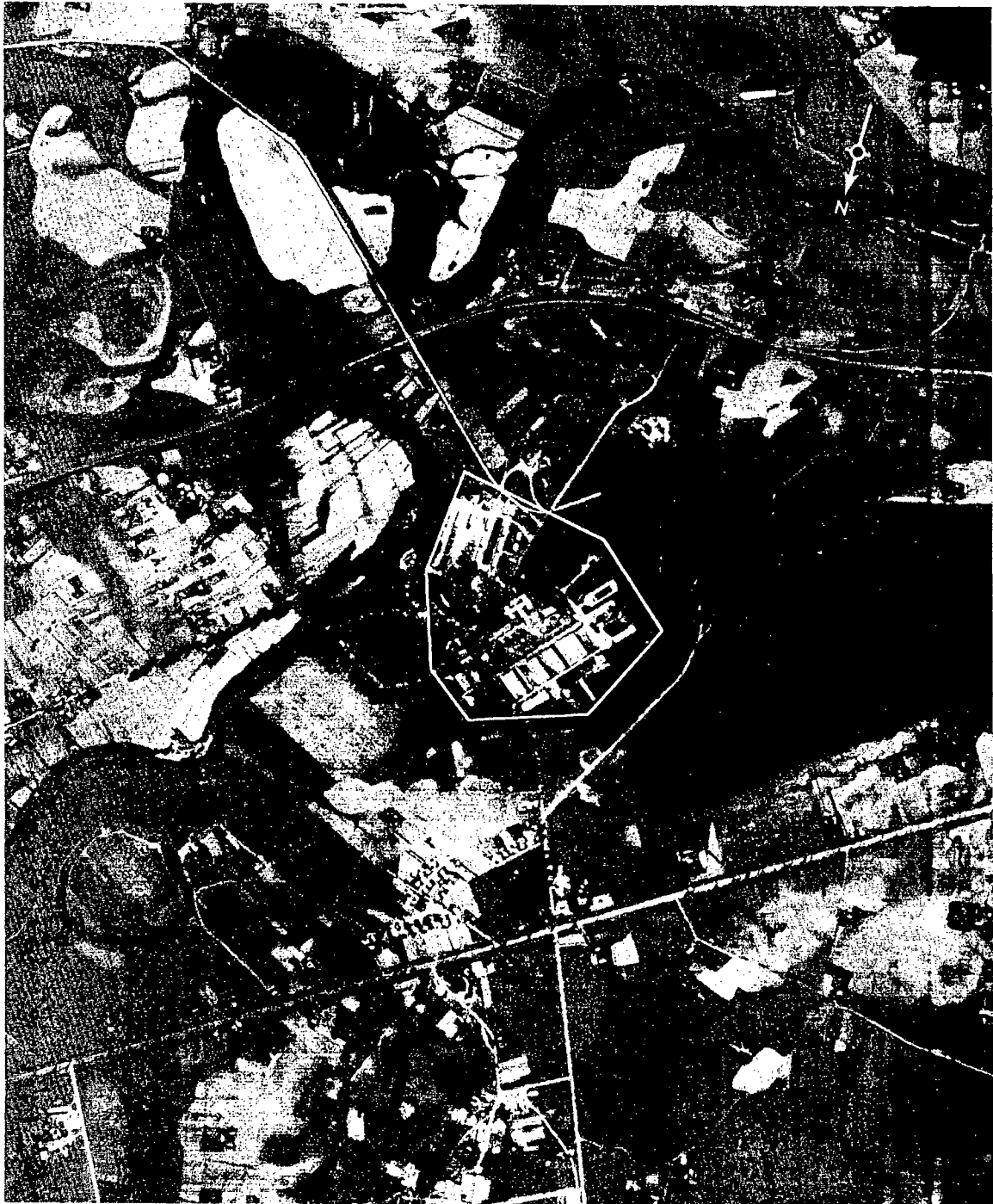


FIGURE 2. SOVETSK ARMY BARRACKS TAURAGE SOUTHWEST, SOVETSK, USSR, OCTOBER 1964.

NPIC J-9229 (4/65)

- 3 -

~~TOP SECRET RUFF~~

SUMMARY

Sovetsk Army Barracks Taurage Southwest is on the southwest edge of Taurage, approximately 95 kilometers (km) southeast of Klaipeda and 125 km northeast of Kaliningrad (Figure 1).

This installation covers approximately 90 acres and contains 43 buildings: 2 administration buildings, 11 barracks, 7 storage buildings, 5 possible equipment storage/maintenance

buildings, and 18 support buildings (Figures 2 and 3).

This installation is covered on KEYHOLE photography from 6 missions between November 1962 and October 1964. Comparative analysis reveals the addition of at least 2 barracks since 1962.

DESCRIPTION OF INSTALLATION

Railroad Service

The rail line between Taurage and Sovetsk passes within 450 meters of the installation on the south.

Road Service

The installation is served by city streets.

Administration and Troop Housing Area

Area D contains 2 irregular multistory administration buildings, 9 multistory barracks,

2 other barracks, and 14 support buildings.

General Storage Area

Area E contains 7 storage buildings and a support building.

Equipment Storage/Maintenance Area

Area J contains 5 possible equipment storage/maintenance buildings (one 280 by 80 feet and four 280 by 70 feet) and 3 support buildings.

~~TOP SECRET RUFF~~

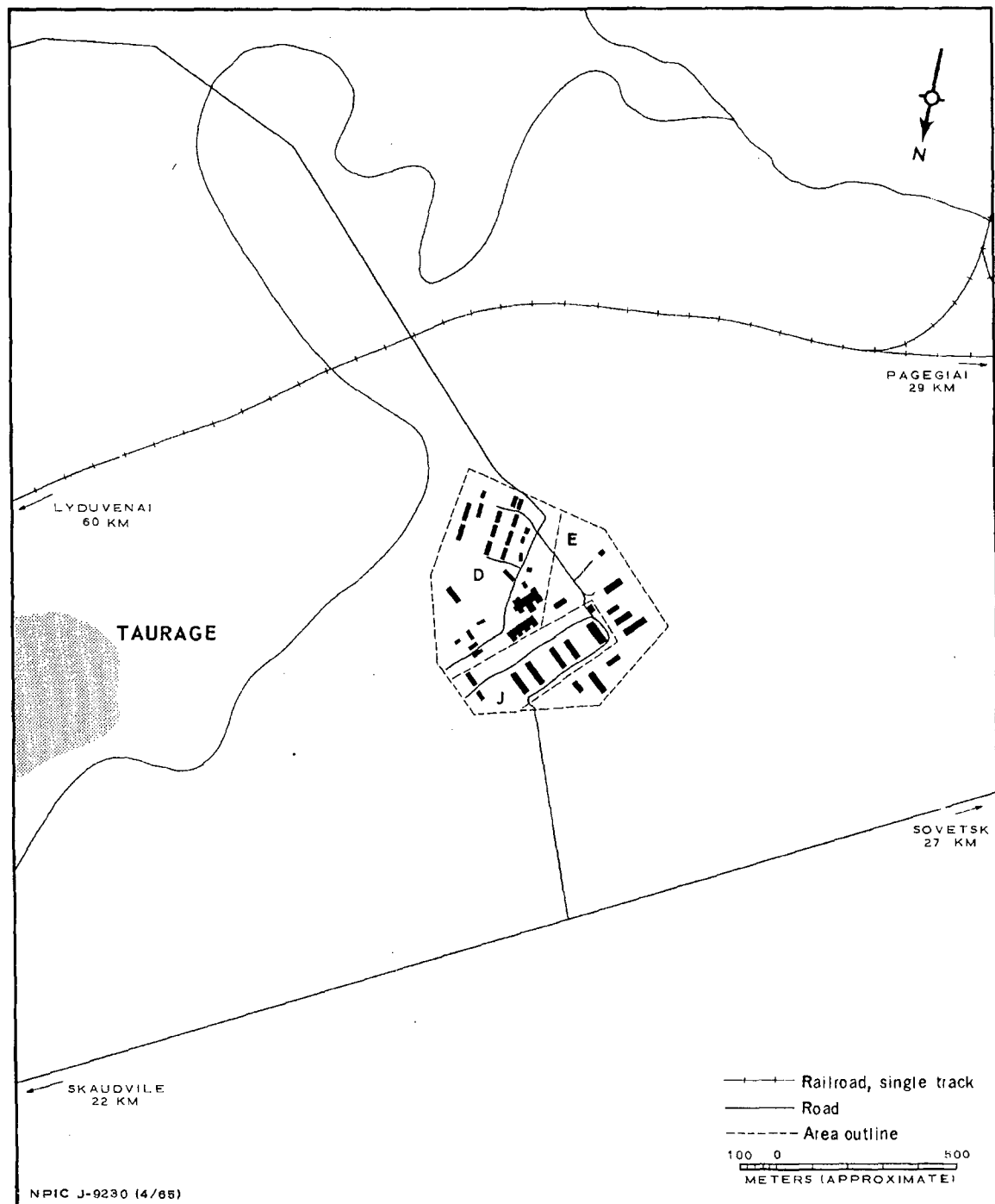


FIGURE 3. SOVETSK ARMY BARRACKS TAURAGE SOUTHWEST. Sketch compiled from October 1964.

- 5 -

~~TOP SECRET RUFF~~

~~TOP SECRET RUFF~~

REFERENCES

PHOTOGRAPHY

MAPS OR CHARTS

US Air Target Chart, Series 200, Sheet 0168-1HL, 2d ed, Jul 62 (SECRET)

DOCUMENT

Army. PIB-TK-53-63, *Military Installations, Baltic MD, Taurage, USSR*, Jun 63 (TOP SECRET RUFF)

REQUIREMENT

DIAAP-1-15-64 (partial answer)

NPIC PROJECT

11904/64

- 6 -

~~TOP SECRET RUFF~~

~~TOP SECRET~~

~~TOP SECRET~~