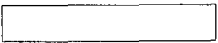


HR70-14

~~TOP SECRET~~

Copy **108**

6 Pages



April 1965



PHOTOGRAPHIC INTERPRETATION REPORT

APPROVED FOR RELEASE
- HISTORICAL COLLECTION
DIVISION-HR70-14 DATE:
05-31-2012

SOVIET MILITARY ORDER OF BATTLE

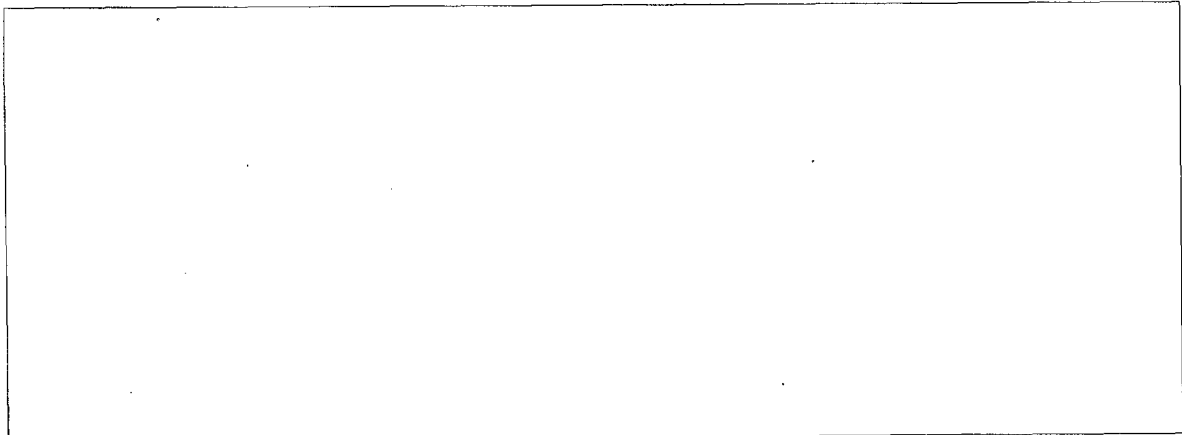
BALTIC MD



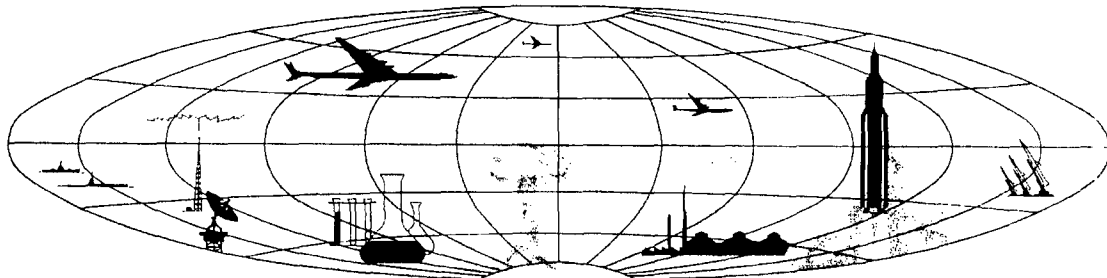
CIA



DIA



NATIONAL PHOTOGRAPHIC INTERPRETATION CENTER



~~TOP SECRET~~

Excluded from automatic
downgrading and declassification



PREFACE

This report is one in a series on Soviet Ground Force and Logistic installations being prepared for a DIA/CIA Panel. The series is being coordinated, published and disseminated by NPIC. The photographic analysis is being performed by the NPIC Photographic Analysis Group, the CIA Photographic Intelligence Division (NPIC), and the Production Center IPIa (DIA). The photographic analysis for this particular report was performed by the Production Center IPIa.

In the interest of uniformity, the titles and letter designators for the facilities observed at these installations are identical with those appearing in the project requirement. When a specific facility is not observed both its title and letter designator are omitted in the report.

Titles and letter designators for the various facilities are as follows: (A) railroad service, (B) road service, (C) landing strips, (D) administrative and troop housing areas, (E) storage areas, (F) ammunition storage areas, (G) POL storage areas, (H) other buildings and facilities, (J) equipment storage/maintenance areas, (K) athletic fields, (L) small arms firing ranges, (M) driver training areas, (N) tank/assault gun firing ranges, (P) flat trajectory firing ranges, (Q) artillery emplacements (batteries), (R) infantry or combined arms field training areas or courses, (S) special training facilities, (T) unidentified facilities or tracking activity.





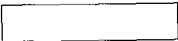
KLAIPEDA ARMY BARRACKS LIBAUER ST

(55-43N 021-07E)

KLAIPEDA, LITOVSKAYA SSR, USSR

BALTIC MD

BE No:



AL No:



COMOR No:

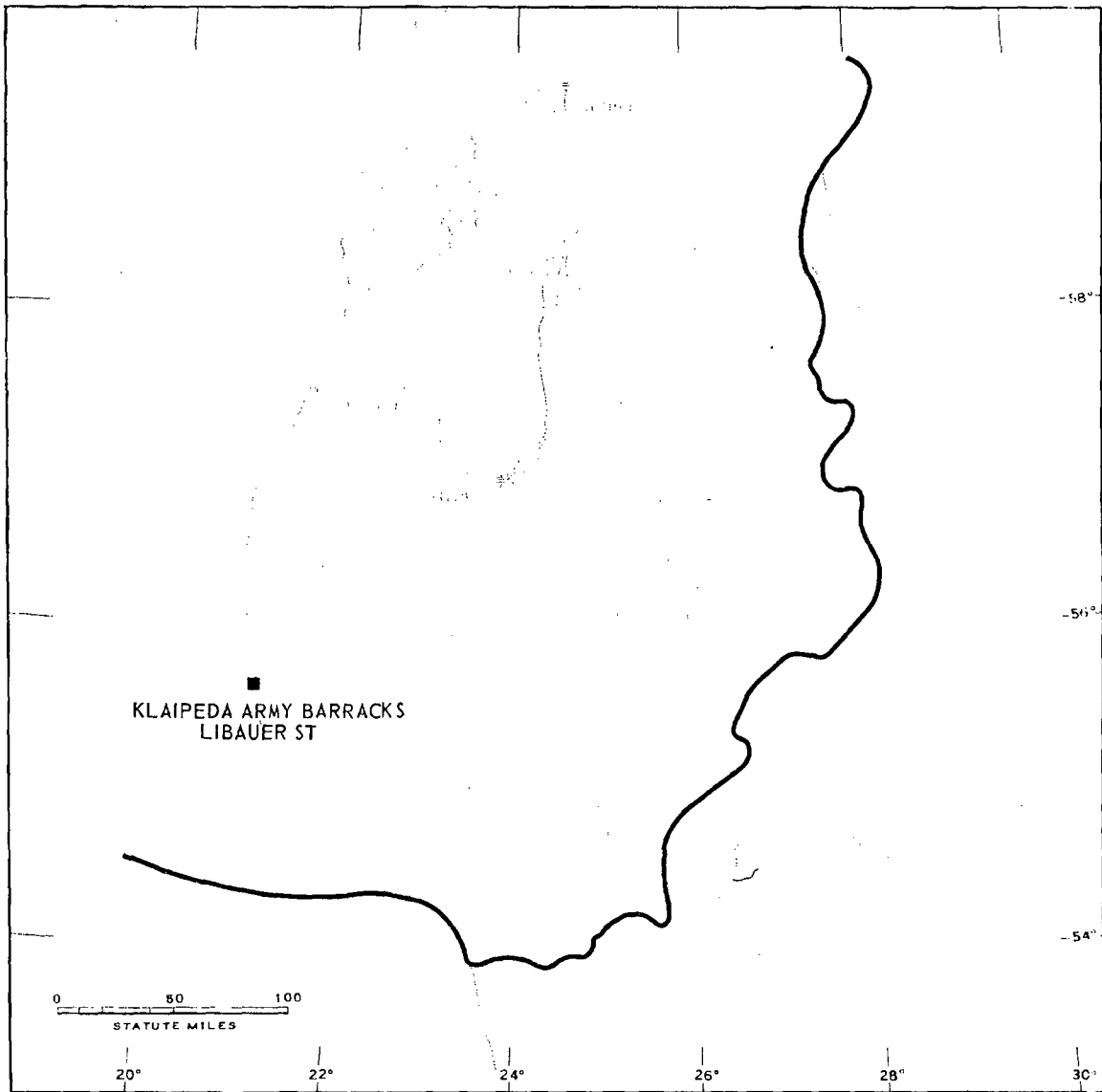


FIGURE 1. LOCATION OF KLAIPEDA ARMY BARRACKS LIBEAUER ST.

NDIC J-0297 (4/7/81)



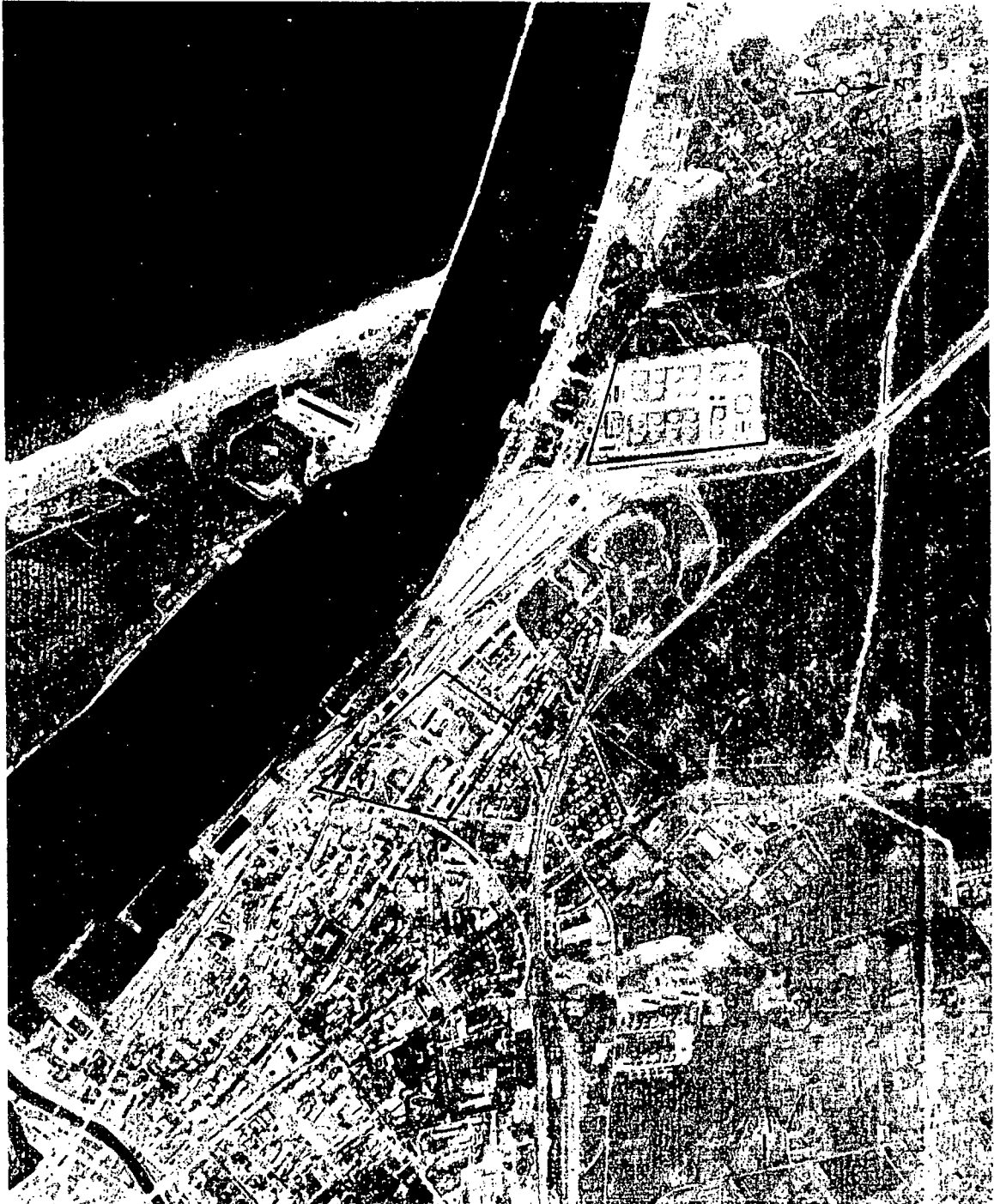


FIGURE 2. KLAIPEDA ARMY BARRACKS LIBAUER ST, KLAIPEDA, USSR, JULY 1964.

NPIC J-1090 (4/765)





SUMMARY

Klaipeda Army Barracks Libauer ST is located in the north-central part of the port of Klaipeda on the Baltic Sea coast, approximately 100 kilometers (km) south of Liepaja and 120 km northeast of Baltiysk (Figure 1).

The installation covers approximately 28 acres and contains 22 buildings, including 1

administration, 7 barracks, 2 storage, 3 possible equipment storage/maintenance, and 9 support (Figures 2 and 3).

The area was covered by 6 KEYHOLE missions between November 1962 and July 1964. Possible recent changes include the addition of 1 or 2 barracks.

DESCRIPTION OF INSTALLATION

Railroad Service

The main north-south rail line is approximately 250 meters east.

Road Service

The installation is served by connecting streets in Klaipeda and north-south roads.


Administration and Troop Housing Area

Area D contains 1 U-shaped multistory administration building, 7 multistory barracks, and 5 support buildings.

General Storage Area

Area E contains 2 storage buildings and 4 support buildings.

POL Storage Areas

POL storage areas within the vicinity include a site approximately 200 meters northwest with 6 tanks, and Klaipeda Petroleum Products Storage No 2  approximately 1 km northwest with 20 large, 3 medium, and approximately 15 small tanks (Area G).

Equipment Storage/Maintenance Area

Area J contains 3 possible equipment storage/maintenance buildings -- 1 L-shaped measuring 110 by 75 feet and 140 by 40 feet, one 75 by 55 feet, and one 75 by 35 feet.

Athletic Field

Area K is an oval-shaped athletic field.



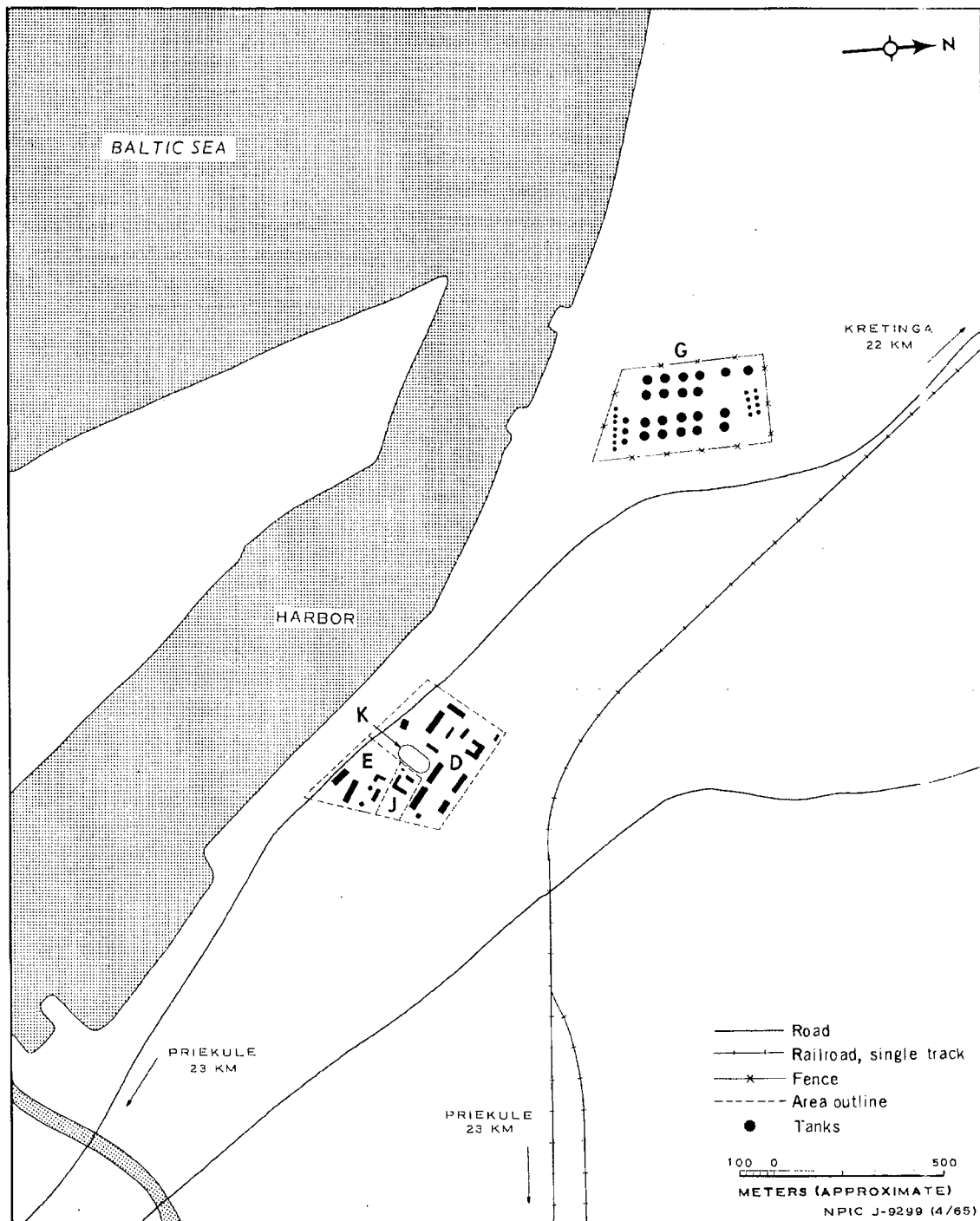
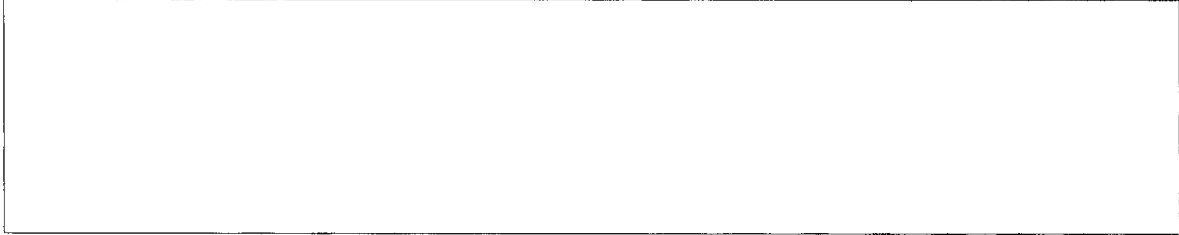


FIGURE 3. KLAIPEDA ARMY BARRACKS LIBAUER ST. Sketch compiled from [redacted] July 1964.



REFERENCES

PHOTOGRAPHY



MAPS OR CHARTS

US Air Target Chart, Series 200, Sheet 0168-111L, 2d ed, Jul 62 (SECRET)



REQUIREMENT

DIAAP-1-15-64 (partial answer)

NPIC PROJECT

11904/64



~~TOP SECRET~~

~~TOP SECRET~~