

~~TOP SECRET~~

HR70-14

PHOTOGRAPHIC INTERPRETATION REPORT



[REDACTED]

SOVIET MILITARY
ORDER OF BATTLE

MOSCOW MD

APPROVED FOR
RELEASE - HISTORICAL
COLLECTION DIVISION
DATE: 06-18-2012

TCS-80811/65

JULY 1965

COPY 82

6 PAGES

handle via **TALENT-KEYHOLE** control only

GROUP 1 EXCLUDED FROM AUTOMATIC DOWNGRADING AND DECLASSIFICATION

~~TOP SECRET~~

WARNING

This document contains information affecting the national security of the United States within the meaning of the espionage laws U. S. Code Title 18, Sections 793 and 794. The law prohibits its transmission or the revelation of its contents in any manner to an unauthorized person, as well as its use in any manner prejudicial to the safety or interest of the United States or for the benefit of any foreign government to the detriment of the United States. It is to be seen only by personnel especially indoctrinated and authorized to receive information in the designated control channels. Its security must be maintained in accordance with regulations pertaining to TALENT-KEYHOLE Control System.

~~TOP SECRET RUFF~~

Handle Via
TALENT-KEYHOLE
Control System Only

TCS-80811/65

PREFACE

This report is one in a series on Soviet Ground Force and Logistic installations being prepared for a DIA/CIA Panel. The series is being coordinated, published and disseminated by NPIC. The photographic analysis is being performed by the NPIC Photographic Analysis Group, the CIA Photographic Intelligence Division (NPIC), and the Production Center 1P1a (DIA). The photographic analysis for this particular report was performed by the NPIC Photographic Analysis Group.

In the interest of uniformity, the titles and letter designators for the facilities observed at these installations are identical with those appearing in the project requirement. When a specific facility is not observed both its title and letter designator are omitted in the report.

Titles and letter designators for the various facilities are as follows: (A) railroad service, (B) road service, (C) landing strips, (D) administrative and troop housing areas, (E) storage areas, (F) ammunition storage areas, (G) POL storage areas, (H) other buildings and facilities, (J) equipment storage/maintenance areas, (K) athletic fields, (L) small-arms firing ranges, (M) driver training areas, (N) tank/assault gun firing ranges, (P) flat trajectory firing ranges, (Q) artillery emplacements (batteries), (R) infantry or combined arms field training area or courses, (S) special training facilities, (T) unidentified facilities or tracking activity.

- 1 -

~~TOP SECRET RUFF~~

Handle Via
TALENT-KEYHOLE
Control System Only

PROBABLE EXPLOSIVES STORAGE AREA

(56-06N 038-45E)

KIRZHACH, VLADIMIRSKAYA OBLAST, USSR

MOSCOW MD

BE No:

AL No:

COMOR No:

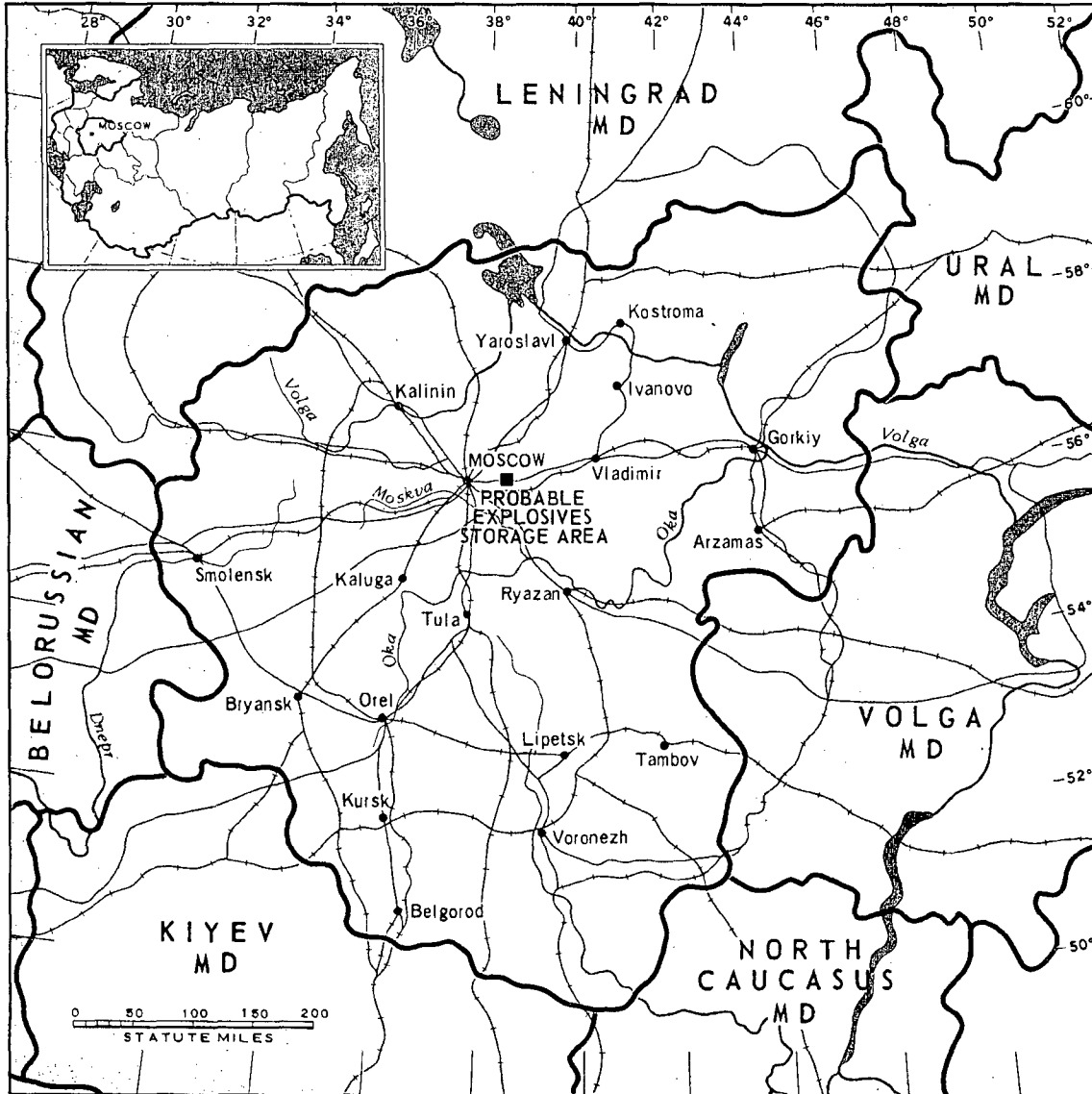


FIGURE 1. LOCATION OF PROBABLE EXPLOSIVES STORAGE AREA.

NPIC K-2204 (6/65)

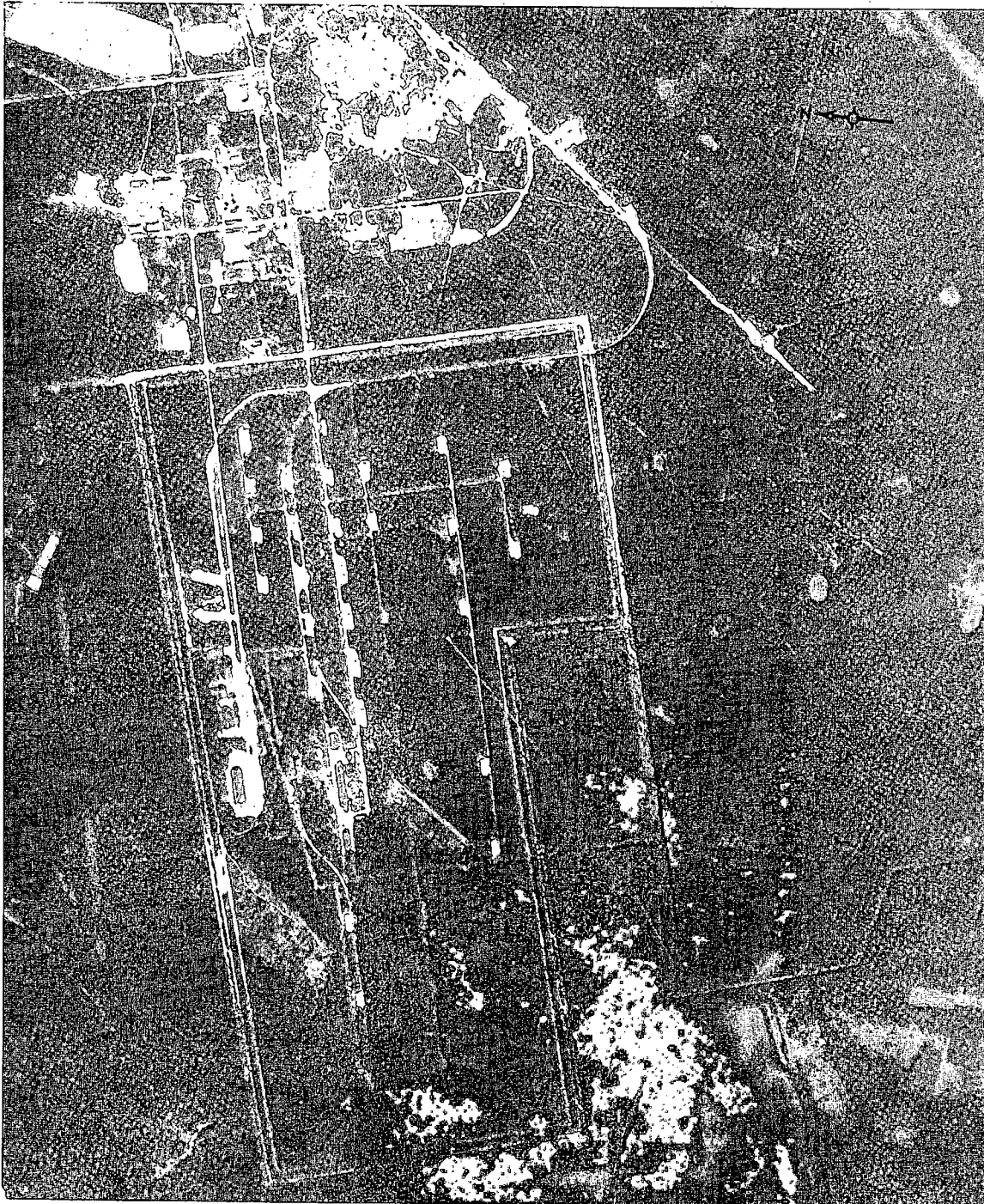


FIGURE 2. PROBABLE EXPLOSIVES STORAGE AREA, KIRZHACH, USSR, JUNE 1964.

NPIC K-2205 (6/65)

SUMMARY

A probable explosives storage area is located 7 kilometers (km) southwest of Kirzhach (Figure 1).

The installation covers approximately 560 acres and contains an administration building, a possible barracks/administration building, 10 barracks, 24 quarters, 34 probable explosives storage buildings, 2 arch-roofed buildings, 1 vehicle shed, a vehicle maintenance building,

11 support buildings, an athletic field, and 2 clearings (Figures 2 and 3).

The installation was covered on 8 KEYHOLE missions between April 1962 and December 1964. Comparative analysis reveals that the 2 arch-roofed buildings were completed by December 1964 and the 2 clearings, possibly for future buildings, were first observed on late December 1964 coverage. A high level of activity was observed throughout this period.

DESCRIPTION OF INSTALLATION

Railroad Service

Three rail spurs serve the installation.

Road Service

All-weather roads provide access to Kirzhach.

Administration and Troop Housing Areas

Area D1 contains an administration building, a possible barracks/administration building, 10 multistory barracks, and 5 support buildings.

Area D2 contains 24 quarters.

Probable Explosives Storage Areas

Area F1 contains 34 probable explosives storage buildings and 3 support buildings.

Area F2 contains 2 arch-roofed buildings.

Poor quality coverage prior to June 1964 precluded earlier confirmation. Immediately east are 2 clearings, first observed on late December 1964 coverage, which may be sites for future buildings.

Other Buildings

Area H contains 3 support buildings.

Equipment Storage/Maintenance Area

Area J contains a vehicle shed (300 by 35 feet) and a maintenance building (150 by 35 feet).

Athletic Field

Area K contains an athletic field.

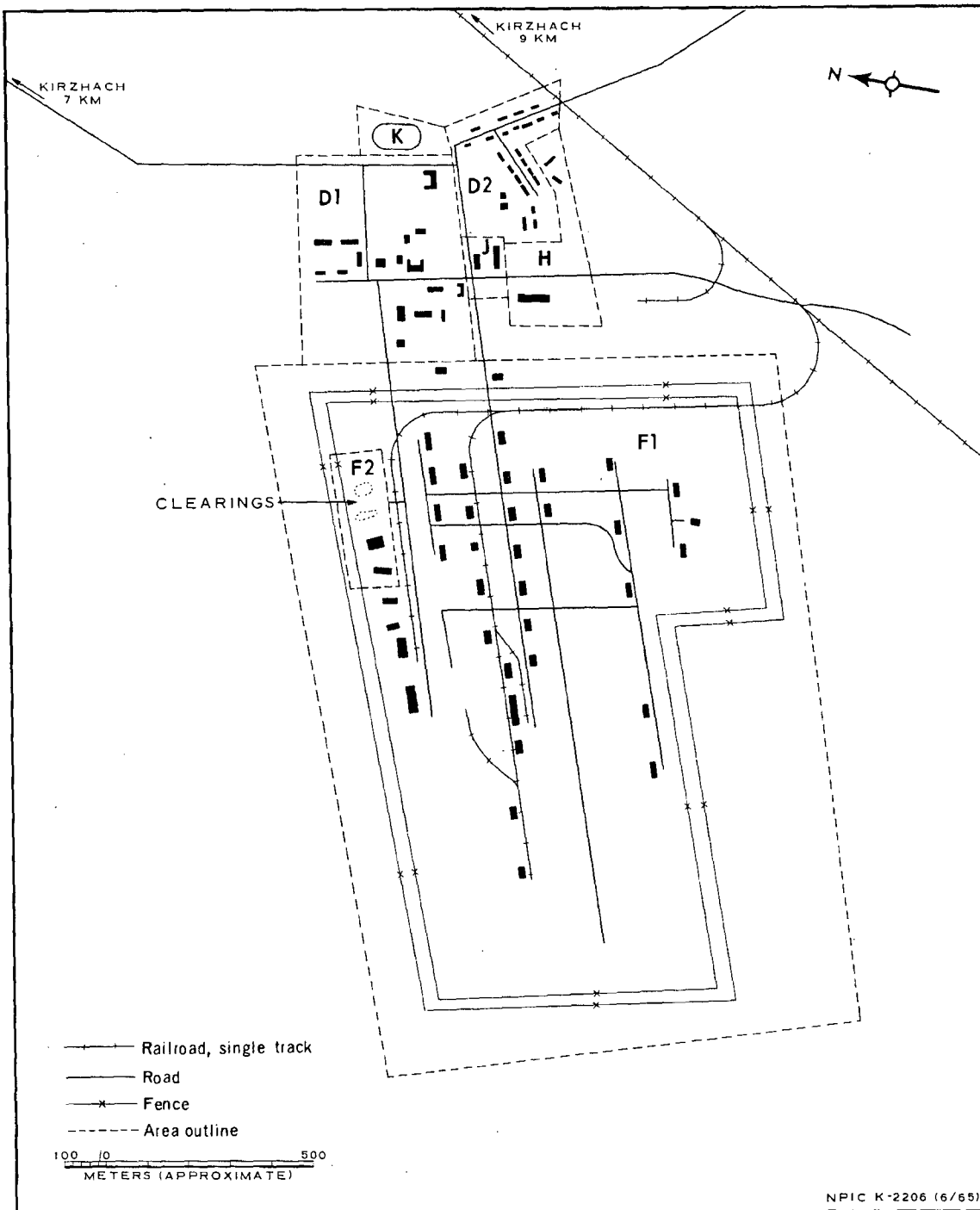


FIGURE 3. PROBABLE EXPLOSIVES STORAGE AREA. Sketch compiled from [redacted] June 1964.

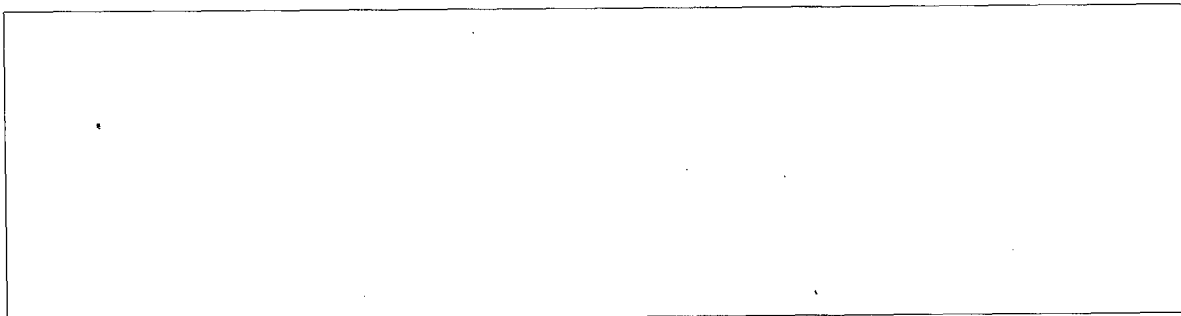
~~TOP SECRET RUFF~~

Handle Via
TALENT-KEYHOLE
Control System Only

TCS-80811/65

REFERENCES

PHOTOGRAPHY



MAPS OR CHARTS

US Air Target Chart, Series 200, Sheet 0154-23HL, 2d ed, Apr 63 (SECRET)

REQUIREMENT

C-RR4-81,733 (partial answer)

NPIC PROJECT

11709/64

- 6 -

Handle Via
TALENT-KEYHOLE
Control System Only

~~TOP SECRET RUFF~~