

~~TOP SECRET~~

HR70-14

APPROVED FOR
RELEASE - HISTORICAL
COLLECTION DIVISION
DATE: 06-18-2012

PHOTOGRAPHIC INTERPRETATION REPORT



~~TOP SECRET~~

**SOVIET MILITARY
ORDER OF BATTLE**

MOSCOW MD

TCS-80761/65

JULY 1965

COPY 22

8 PAGES

handle via **TALENT-KEYHOLE** control only

GROUP 1 EXCLUDED FROM AUTOMATIC DOWNGRADING AND DECLASSIFICATION

~~TOP SECRET~~

WARNING

This document contains information affecting the national security of the United States within the meaning of the espionage laws U. S. Code Title 18, Sections 793 and 794. The law prohibits its transmission or the revelation of its contents in any manner to an unauthorized person, as well as its use in any manner prejudicial to the safety or interest of the United States or for the benefit of any foreign government to the detriment of the United States. It is to be seen only by personnel especially indoctrinated and authorized to receive information in the designated control channels. Its security must be maintained in accordance with regulations pertaining to TALENT-KEYHOLE Control System.

~~TOP SECRET CHESS RUFF~~

Handle Via
TALENT-KEYHOLE
Control System Only

TCS-80761/65

PREFACE

This report is one in a series on Soviet Ground Force and Logistic installations being prepared for a DIA/CIA Panel. The series is being coordinated, published and disseminated by NPIC. The photographic analysis is being performed by the NPIC Photographic Analysis Group, the CIA Photographic Intelligence Division (NPIC), and the Production Center 1P1a (DIA). The photographic analysis for this particular report was performed by the NPIC Photographic Analysis Group.

In the interest of uniformity, the titles and letter designators for the facilities observed at these installations are identical with those appearing in the project requirement. When a specific facility is not observed both its title and letter designator are omitted in the report.

Titles and letter designators for the various facilities are as follows: (A) railroad service, (B) road service, (C) landing strips, (D) administrative and troop housing areas, (E) storage areas, (F) ammunition storage areas, (G) POL storage areas, (H) other buildings and facilities, (J) equipment storage/maintenance areas, (K) athletic fields, (L) small-arms firing ranges, (M) driver training areas, (N) tank/assault gun firing ranges, (P) flat trajectory firing ranges, (Q) artillery emplacements (batteries), (R) infantry or combined arms field training area or courses, (S) special training facilities, (T) unidentified facilities or tracking activity.

- 1 -

~~TOP SECRET CHESS RUFF~~

Handle Via
TALENT-KEYHOLE
Control System Only

KOSTEREVO TRAINING AREA BOLDINO

(55-53N 039-38E)

KOSTEREVO, VLADIMIRSKAYA OBLAST, USSR

MOSCOW MD

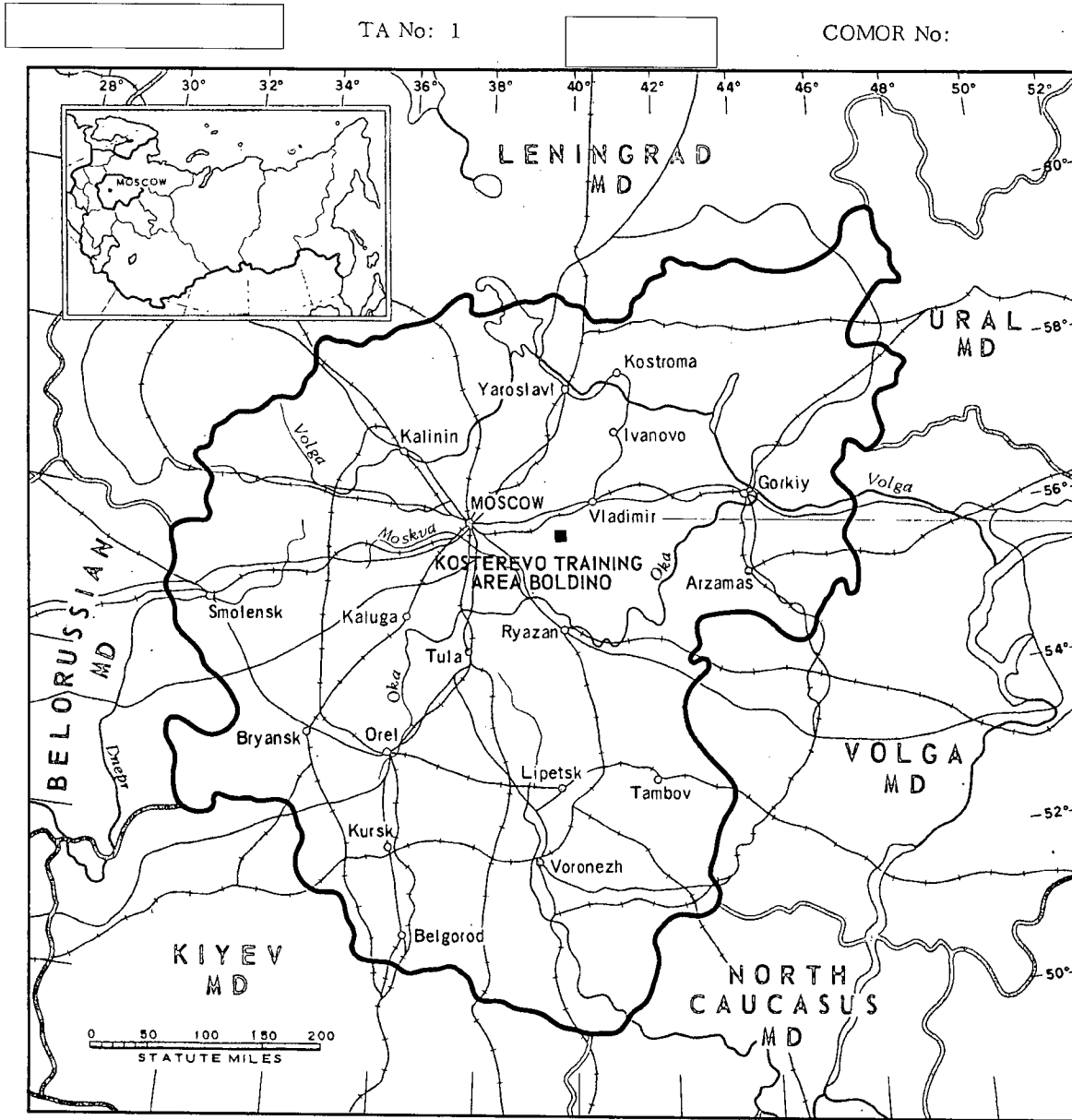


FIGURE 1. LOCATION OF KOSTEREVO TRAINING AREA BOLDINO.

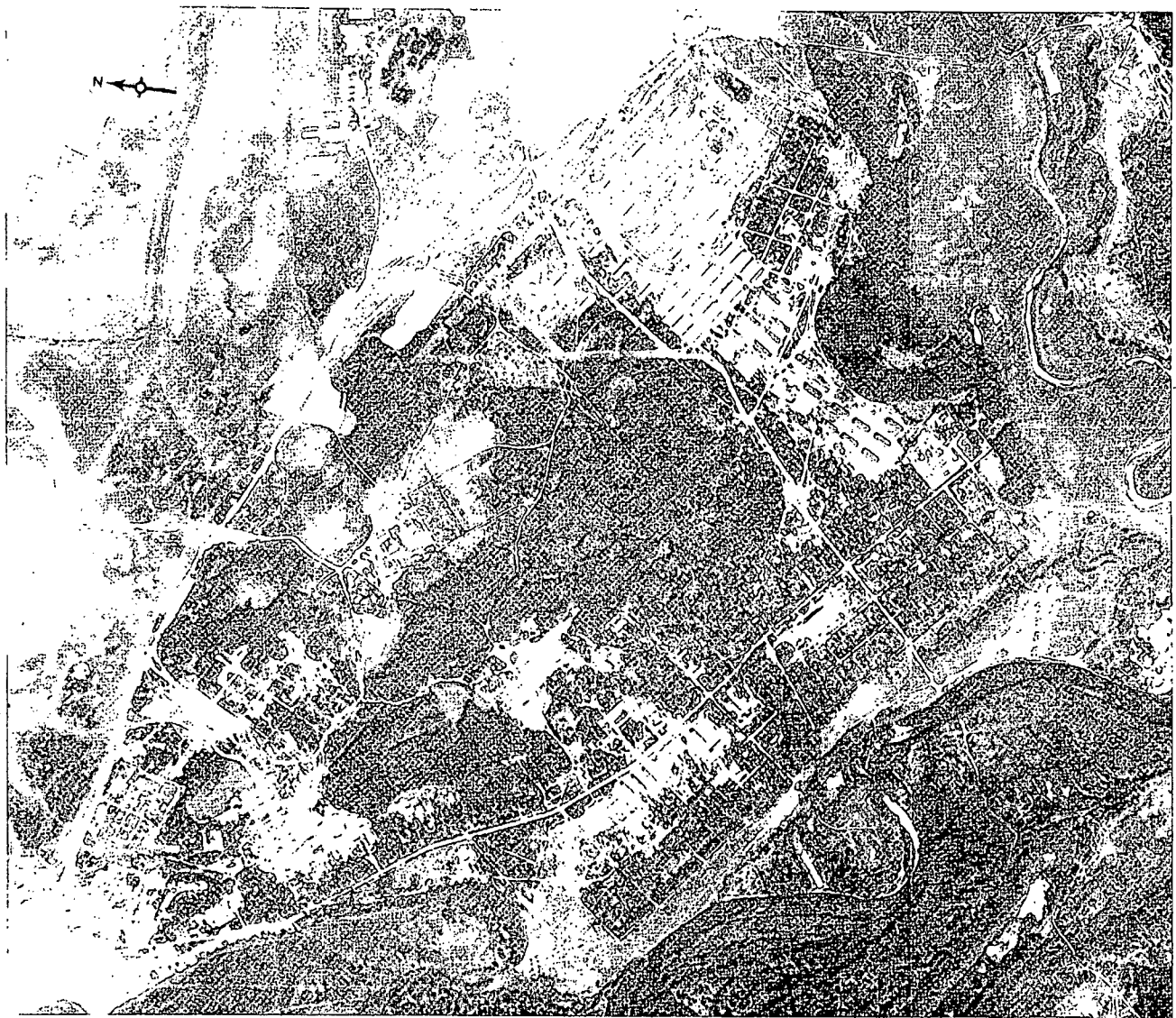


FIGURE 2. SUPPORT AND STORAGE AREA OF THE KOSTEREVO TRAINING AREA BOLDINO, KOSTEREVO, USSR, JUNE 1964.

NPIC X-2039 (6/68)

SUMMARY

Kosterevo Training Area Boldino is located 4 kilometers (km) south of Kosterevo, on both sides of the Klyazma River (Figure 1).

This installation covers approximately 30,700 acres and contains 3 administration buildings, 1 probable administration building, 5 barracks, 3 probable barracks, 6 barracks/administration buildings, 3 barracks/quarters, 34 officers/dependents quarters, 7 bivouac areas, 55 storage buildings, 92 support buildings, 20 ammunition storage buildings, 1 vehicle maintenance building, 3 probable equipment

maintenance buildings, and a possible prison (Figures 2 and 3). Also located in this installation are 4 vertical POL storage tanks, approximately 22 horizontal POL storage tanks, 7 small-arms firing ranges, an athletic field, and approximately 558 AAA positions (Figure 4).

The installation is covered on July 1956 TALENT photography and 8 KEYHOLE missions between July 1961 and December 1964. No significant changes were observed during this period. A high level of activity was observed on all coverage.

DESCRIPTION OF INSTALLATION

Railroad Service

A rail spur serves the petroleum storage area.

Road Service

An all-weather road provides access to Kosterevo.

Administrative and Troop Housing Areas

Area D1 contains 18 officers/dependents quarters and 3 support buildings.

Area D2 is a bivouac area containing 2 barracks/administration buildings and 8 support buildings.

Area D3 contains 1 probable administration building, 3 probable barracks, 1 storage building, and 5 support buildings.

Area D4 contains 3 single-story administration buildings, 1 multistory barracks/administration building, 5 multistory barracks, 3 barracks/quarters, 16 officers/dependents quarters, 2 bivouac areas, 8 storage buildings, and 33 support buildings. Four unidentified revetments were observed in this area on December 1964 coverage.

Area D5 is a bivouac area containing 2

barracks/administration buildings and 4 support buildings.

Area D6 (Figure 4) contains 1 single-story barracks/administration building, 1 bivouac area, and 3 support buildings.

Area D7 (Figure 4) contains 1 bivouac area and 2 support buildings.

Area D8 (Figure 4) contains 1 bivouac area.

General Storage Area

Area E contains 40 storage buildings and 2 support buildings.

Ammunition Storage Area

Area F contains 20 ammunition storage buildings and 6 support buildings.

POL Storage Area

Area G contains 4 vertical POL storage tanks 25 feet in diameter, approximately 22 horizontal POL storage tanks 30 feet long, 2 storage buildings, and 7 support buildings. The storage tanks are served by a rail spur.

Other Buildings

Area H contains a T-shaped, secured

Handle Via
TALENT-KEYHOLE
Control System Only

TCS-80761/65

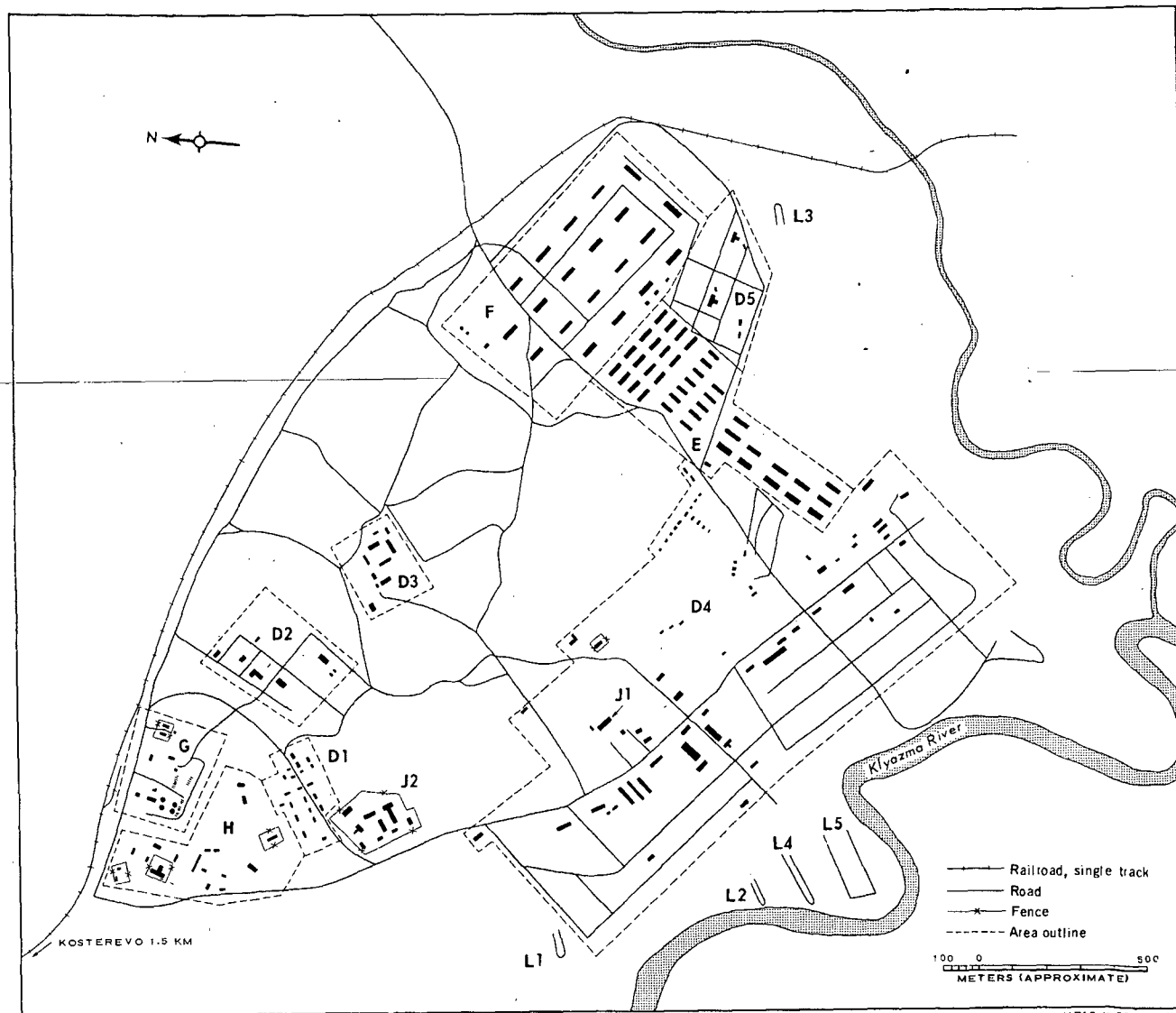


FIGURE 3. SUPPORT AND STORAGE AREA OF THE KOSTEREVO TRAINING AREA BOLDINO. Sketch compiled from [redacted] NPIC K-2040 (6/65) June 1964.

Handle Via
TALENT-KEYHOLE
Control System Only

~~TOP SECRET CHESS RUFF~~

TCS-80761/65

possible prison, 3 storage buildings, and 14 support buildings.

Equipment Storage/Maintenance Areas

Area J1 contains one 105- by 50-foot vehicle maintenance building.

Area J2 contains 3 probable equipment maintenance buildings (140 by 50 feet, 80 by 45 feet, and 100 by 50 feet), 1 storage building, and 5 support buildings. Equipment was observed scattered throughout this area on June 1964 coverage.

Athletic Field

Area K (Figure 4) is an athletic field.

Small-Arms Firing Ranges

Seven small-arms firing ranges are located throughout the area. Area L1 is 225 by 75 feet, L2 is 190 by 50 feet, L3 is 155 by 40 feet, L4 is 525 by 45 feet, L5 is 525 by 225 feet, L6 is 475 by 40 feet, and L7 is 190 by 40 feet. Areas L6 and L7, not shown on Figure 2 or 3, are depicted on Figure 4.

Artillery Emplacements (Batteries)

Six AAA areas are located throughout the installation. Area Q1 has 4 positions, Q2 has approximately 150 positions, Q3 has 4 positions, Q4 has approximately 200 positions, Q5 has approximately 60 positions, and Q6 has approximately 140 positions.

~~TOP SECRET CHESS RUFF~~



FIGURE 4. KOSTEREVO TRAINING AREA BOLDINO, SEPTEMBER 1964.

NRIC 61-2041 18/650

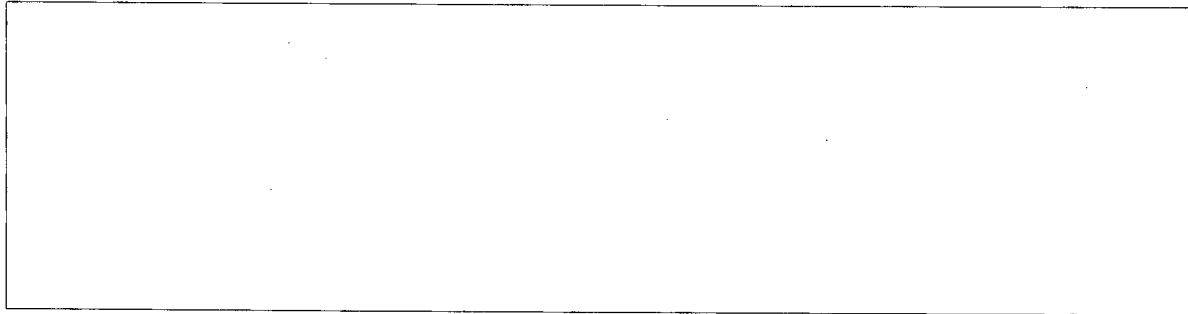
Handle Via
TALENT-KEYHOLE
Control System Only

~~TOP SECRET CHESS RUFF~~

TCS-80761/65

REFERENCES

PHOTOGRAPHY



MAPS OR CHARTS

US Air Target Chart, Series 200, Sheet 0166-1HL, 2d ed, Nov 62 (SECRET)

DOCUMENTS



Army. DPIR-18-58, *Antiaircraft Training Center, Kosterevo, USSR*, Aug 58 (TOP SECRET CHESS)



Army. *Intelligence Research Project P1-1301, Installation List, Soviet Ground Forces, USSR*, Jul 60 (SECRET)

REQUIREMENT

C-RR4-81,733 (partial answer)

NPIC PROJECT

11709/64

Handle Via
TALENT-KEYHOLE
Control System Only

~~TOP SECRET CHESS RUFF~~