



~~TOP SECRET~~

IMAGERY
ANALYSIS
DIVISION

PIR

APPROVED FOR RELEASE -
HISTORICAL COLLECTION
DIVISION - HR70-14
DATE: 05-10-2012

PHOTOGRAPHIC INTELLIGENCE REPORT

PROBABLE SS-I SCUD MISSILE UNIT,
BAYRAM ALI ARMY BARRACKS SE AL-I,
USSR

CIA/PIR 67324

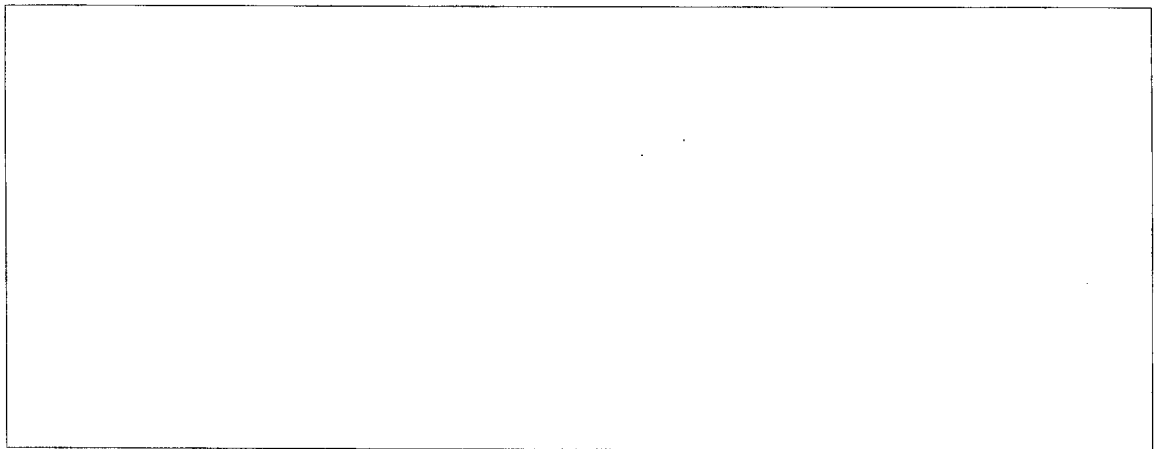
DATE JUNE 1966

COPY

PAGES 9

~~TOP SECRET~~

GROUP 1
Excluded from automatic
downgrading and declassification



[illegible]

~~TOP SECRET CHESS RUFF~~

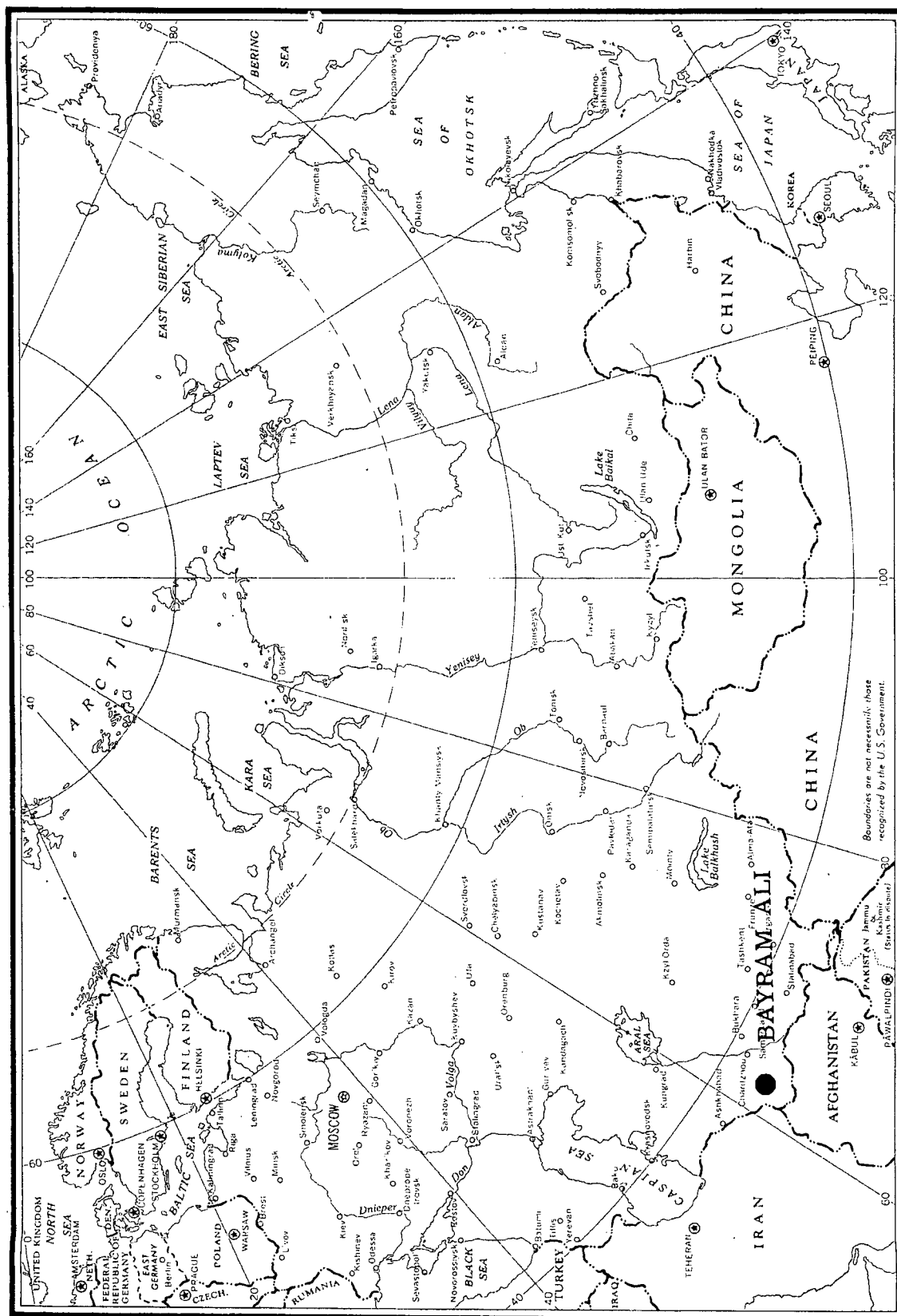
CIA/PIR-67324

CIA IMAGERY ANALYSIS DIVISION

PROBABLE SS-1 SCUD MISSILE UNIT,
BAYRAM ALI ARMY BARRACKS SE AL-1,
USSR

- 1 -

~~TOP SECRET CHESS RUFF~~



~~TOP SECRET CHESS RUFF~~

CIA/PIR-67324

CIA IMAGERY ANALYSIS DIVISION

PREFACE

The purpose of this report is to review photography of Bayram Ali Army Barracks SE Al-1 for evidence of SS-1 SCUD tactical missile unit deployment.

NPIC Report, [] - Soviet Order of Battle - Turkestan M.D., provides the functional analysis and illustrations of this installation.

All references of vehicles and equipment in relationship to the organization of units are derived from the DIA Organization and Logistical Data on Soviet Ground Forces, Part 1, Soviet Ground Force Organization.

- 2 -

~~TOP SECRET CHESS RUFF~~

~~TOP SECRET CHESS RUFF~~

CIA/PIR-67324

CIA IMAGERY ANALYSIS DIVISION

BAYRAM ALI ARMY BARRACKS SE AL-1

(37 37N-062 09E)

Analysis of [] December 1964, has revealed vehicles and equipment of elements of a probable SS-1 SCUD tactical missile unit, probably of battalion size or larger, located in the Bayram Ali Army Barracks SE AL-1.

The major identification features of this unit are probable SCUD missile resupply transport semitrailers with truck tractor prime movers and probable KRAZ-214 cargo trucks with lowbed trailers utilized to transport the SCUD TEL.

The following SCUD associated vehicles and pieces of equipment were observed in this installation:

Area J, Figure 4 of the referenced NPIC report (See Figure 3).

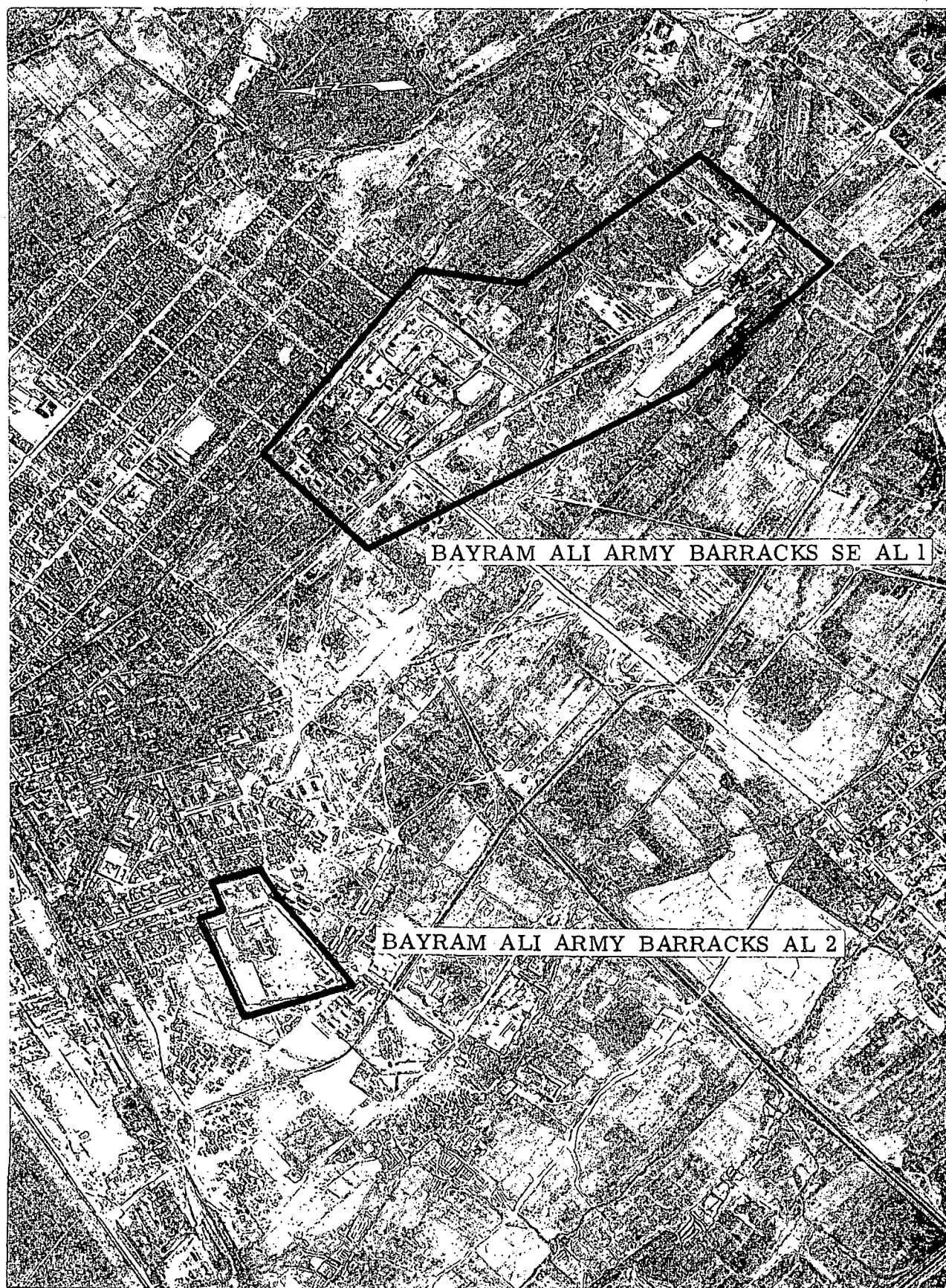
- 5 Probable SCUD resupply transport trailers with prime movers.
- 4 Probable KRAZ-214 cargo trucks.
- 7 Probable van trucks.
- 23 Cargo trucks.
- 2 Probable UAZ 69 utility trucks.
- 6 U/I vehicles.
- 3 U/I pieces of equipment.

Area J2, Figure 4 of the referenced NPIC report (See Figure 3).

- 2 Probable KRAZ-214 cargo trucks.
- 3 Lowbed trailers.
- 1 Probable cargo truck.
- 5 U/I vehicles.
- 2 U/I vehicles/equipment.
- 2 U/I pieces of equipment.

- 3 -

~~TOP SECRET CHESS RUFF~~

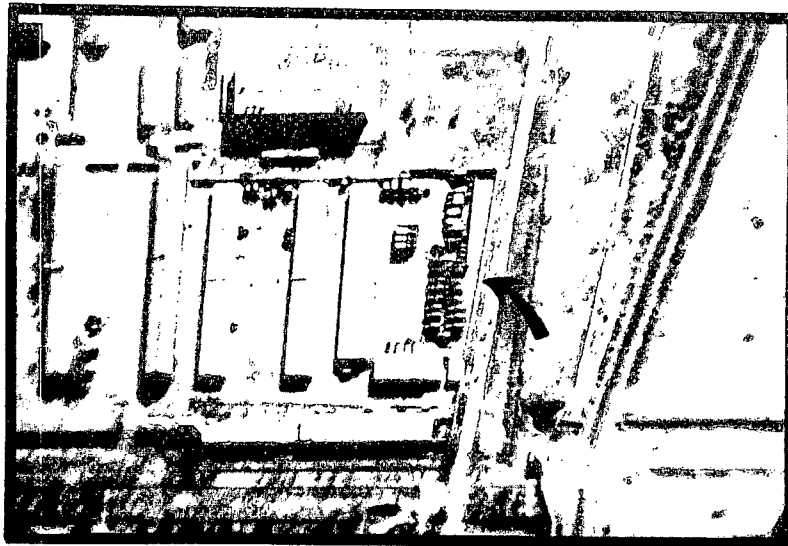


DECEMBER 1964

Figure 2

TOP SECRET CHESS-RUFF

SS-I SCUD MISSILE ASSOCIATED VEHICLES AND EQUIPMENT



AREA J1 *

PROBABLE SCUD RESUPPLY TRANSPORT TRAILERS WITH PRIME MOVERS



AREA J2 *

PROBABLE KRAZ 214 CARGO TRUCKS WITH LOWBED TRAILERS

* REFERENCED NPIC REPORT

DECEMBER 1964

TOP SECRET CHESSE-RUFF

Handle Via TALENT KEYHOLE Control System Only

Figure 3

~~TOP SECRET CHESS RUFF~~

CIA/PIR-67324

CIA IMAGERY ANALYSIS DIVISION

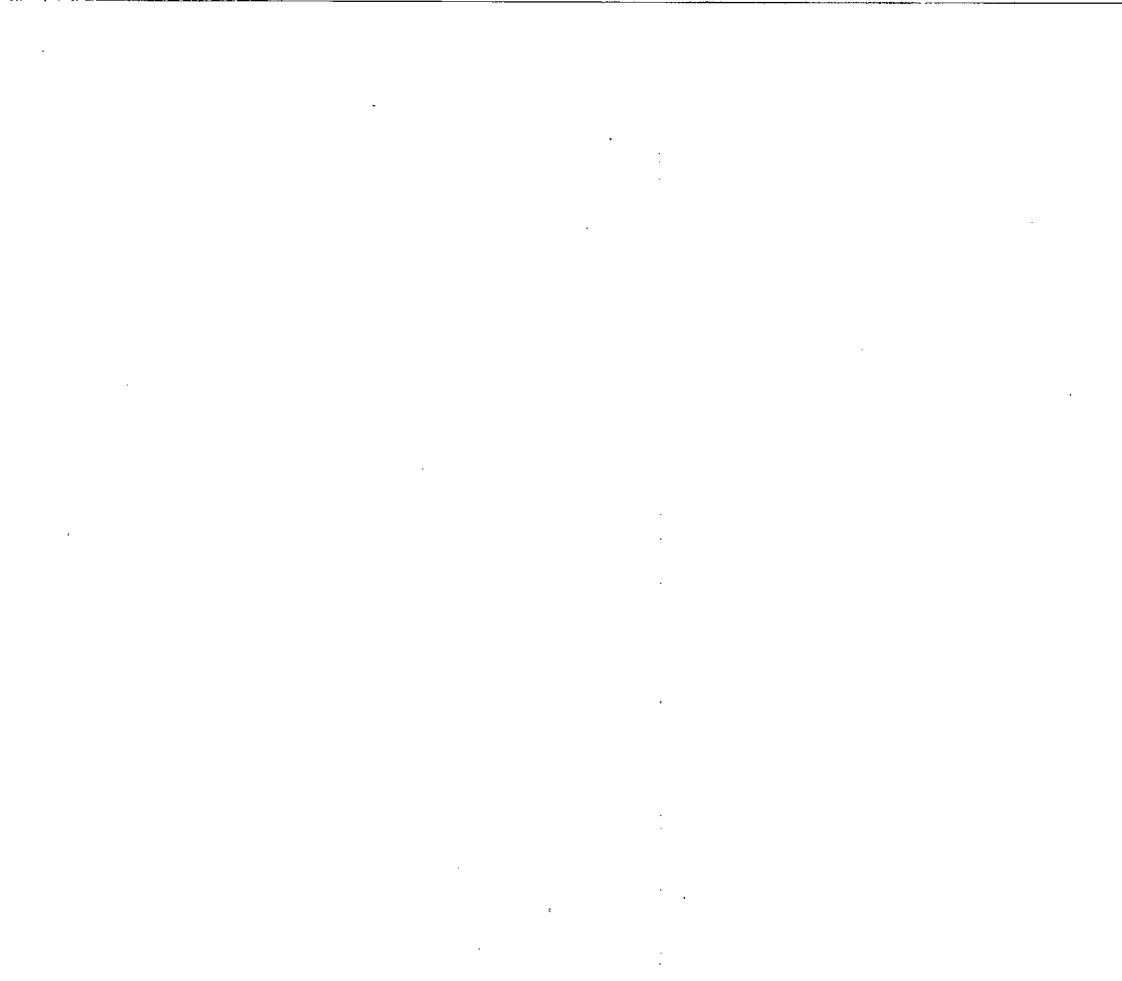
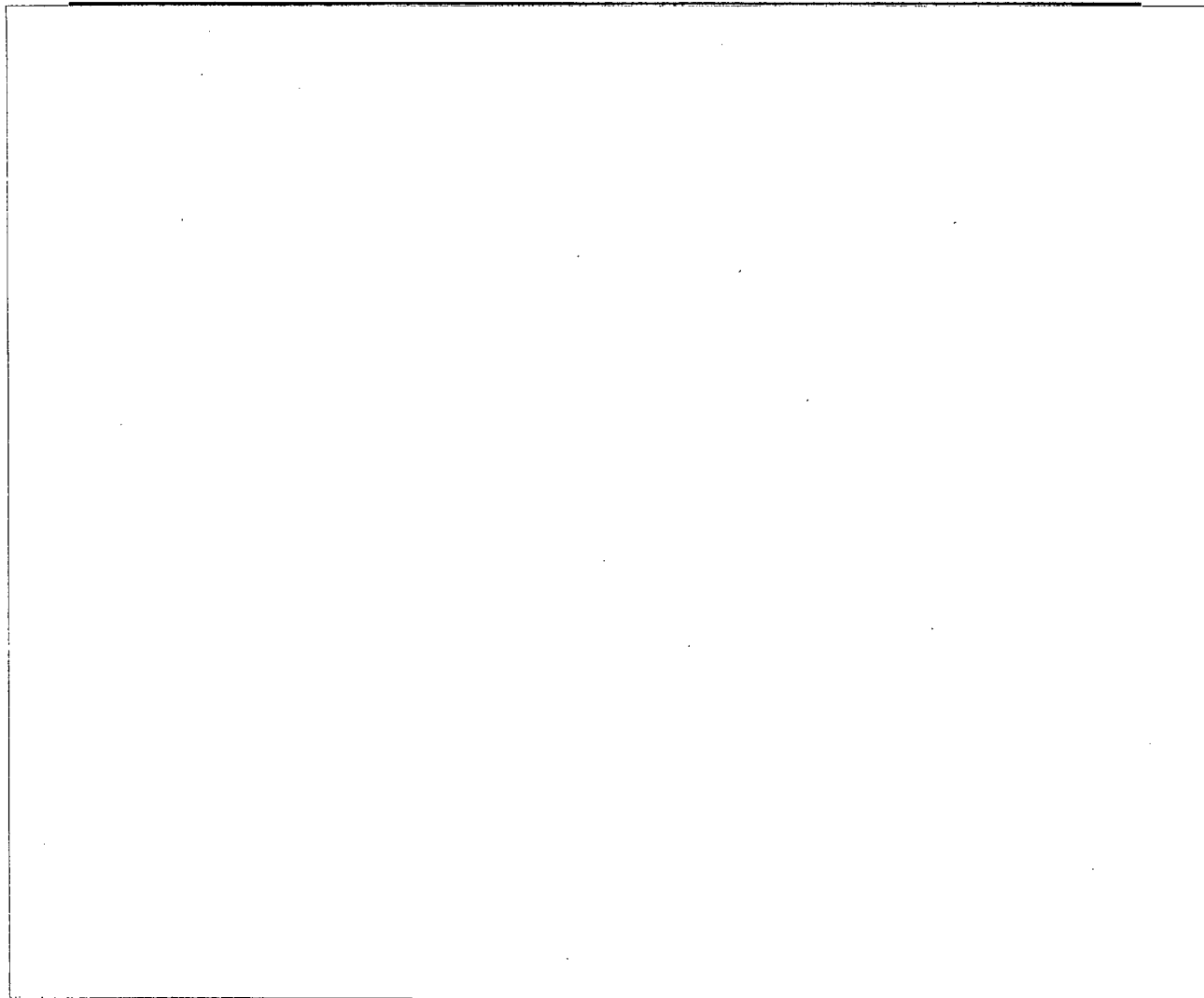
Elements of an SS-1 SCUD tactical missile unit have been observed at an unidentified installation immediately east of the Mary North Airfield at 37 39N-061 50E, (CIA/PIR-67046). This installation is approximately 16 nm west of Bayram Ali (See Figure 4). The presence of probable SCUD associated vehicles and equipment in both the Mary and Bayram Ali installations during the same time frame (September 1964) indicates they are probably separate battalions of an SS-1 SCUD Brigade.

The referenced DIA Document of the Soviet Ground Force Organization carries six missile resupply transport trailers in an SS-1 SCUD Brigade, three per battalion.

The presence of three probable SCUD missile resupply transport trailers at the Mary installation indicates a probable battalion is located there. Five probable SCUD missile resupply transport trailers were observed at the Bayram Ali installation. The two additional probable resupply trailers at this installation may indicate an increase in the Table of Organization and Equipment of the SCUD Brigade.

- 4 -

~~TOP SECRET CHESS RUFF~~



~~TOP SECRET CHESS RUFF~~

CIA/PIR-67324

CIA IMAGERY ANALYSIS DIVISION

REFERENCES

MAPS AND CHARTS

U.S. Air Target Chart, Series 200, Sheets 0337-12AL and 0337-17AL, 2nd Edition, June 1960, (SECRET).

DOCUMENTS

NPIC. Soviet Military Order of Battle, Turkestan M.D., August 1965, (TOP SECRET CHESS RUFF).

CIA/PIR-67046, Probable SCUD Missile Unit at Mary North Airfield, USSR, August 1965, (TOP SECRET RUFF).

DIA, Organization and Logistical Data on Soviet Ground Forces, Part 1, Soviet Ground Force Organization, July 1964, (SECRET).

REQUIREMENT

C-RR6-83,662

PROJECT

31281-6

- 5 -

~~TOP SECRET CHESS RUFF~~

~~TOP SECRET~~

~~TOP SECRET~~