

25X1

[Redacted]

**SECRET**

Approved For Release 2003/08/05 : CIA-RDP02T06408R000800010060-6

# MCP



**MISSION COVERAGE PLOTS**



## MISSION C056C

7 APRIL 1966

Declass Review by NIMA/DOD

NPIC/R-5014/66  
MAY 1966

GROUP 1 EXCLUDED FROM  
AUTOMATIC DOWNGRADING  
AND DECLASSIFICATION

[Redacted]

**SECRET**

Approved For Release 2003/08/05 : CIA-RDP02T06408R000800010060-6

25X1

Approved For Release 2003/08/05 : CIA-RDP02T06408R000800010060-6

WARNING

This document contains information affecting the national defense of the United States, within the meaning of Title 18, sections 793 and 794, of the U.S. Code, as amended. Its transmission or revelation of its contents to or receipt by an unauthorized person is prohibited by law.

Approved For Release 2003/08/05 : CIA-RDP02T06408R000800010060-6

(MCP INSERT)

NPIC CONTROL NUMBER LIST  
FOR CHURCH DOOR MISSION C056C

NPIC Control Number	Camera	Inclusive Frame Numbers	Can Numbers
61348	9L	010-133	1 of 13
61349	9L	134-266	2 of 13
61350	9L	267-399	3 of 13
61351	9L	400-532	4 of 13
61352	9L	533-665	5 of 13
61353	9L	666-798	6 of 13
61354	9L	799-931	7 of 13
61355	9L	932-1064	8 of 13
61356	9L	1065-1197	9 of 13
61357	9L	1198-1330	10 of 13
61358	9L	1331-1463	11 of 13
61359	9L	1464-1596	12 of 13
61360	9L	1597-1599	13 of 13
61361	9R	010-133	1 of 13
61362	9R	134-266	2 of 13
61363	9R	267-399	3 of 13
61364	9R	400-532	4 of 13
61365	9R	533-665	5 of 13
61366	9R	666-798	6 of 13
61367	9R	799-931	7 of 13
61368	9R	932-1064	8 of 13
61369	9R	1065-1197	9 of 13
61370	9R	1198-1330	10 of 13
61371	9R	1331-1463	11 of 13
61372	9R	1464-1596	12 of 13
61373	9R	1597-1599	13 of 13

25X1

Approved For Release 2003/08/05 : CIA-RDP02T06408R000800010060-6

**SECRET**

NPIC/R-5014/66



MISSION COVERAGE PLOTS

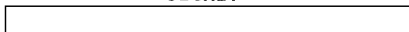
# MISSION C056C

7 APRIL 1966

MAY 1966

NATIONAL PHOTOGRAPHIC INTERPRETATION CENTER

**SECRET**



Approved For Release 2003/08/05 : CIA-RDP02T06408R000800010060-6

25X1

25X1



### PREFACE

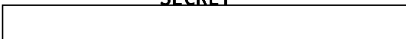
This publication contains the geographic location plots of the photography on CHURCH DOOR Mission C056C, dated 7 April 1966. This photography has been [redacted] These plots are presented on a WAC format that has been reduced for convenience to approximately 60 percent of the original size. There are 4 plot sheets in this publication arranged in ascending order by control number.

The flight-line index on page iii indicates the approximate track of Mission C056C.

25X1

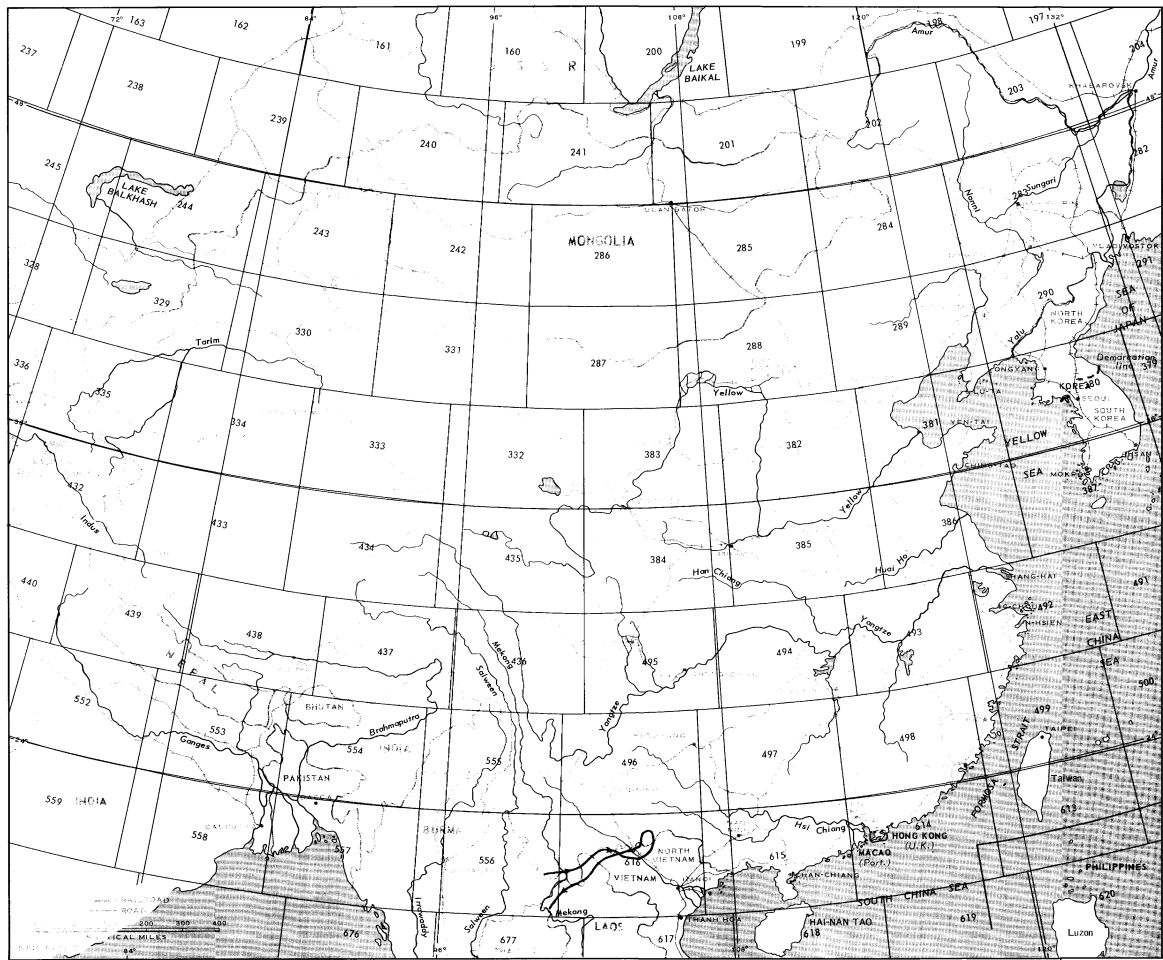
### TABLE OF CONTENTS

Mission Flight-Line Index . . . . .	Page iii
NPIC/P-2988/66 . . . . .	WAC 556
NPIC/P-2989/66 . . . . .	WAC 616
NPIC/P-2990/66 . . . . .	WAC 616
NPIC/P-2991/66 . . . . .	WAC 556



25X1

SECRET



MISSION FLIGHT-LINE INDEX. This map shows the approximate track of CHURCH DOOR Mission C056C, 7 April 1966.

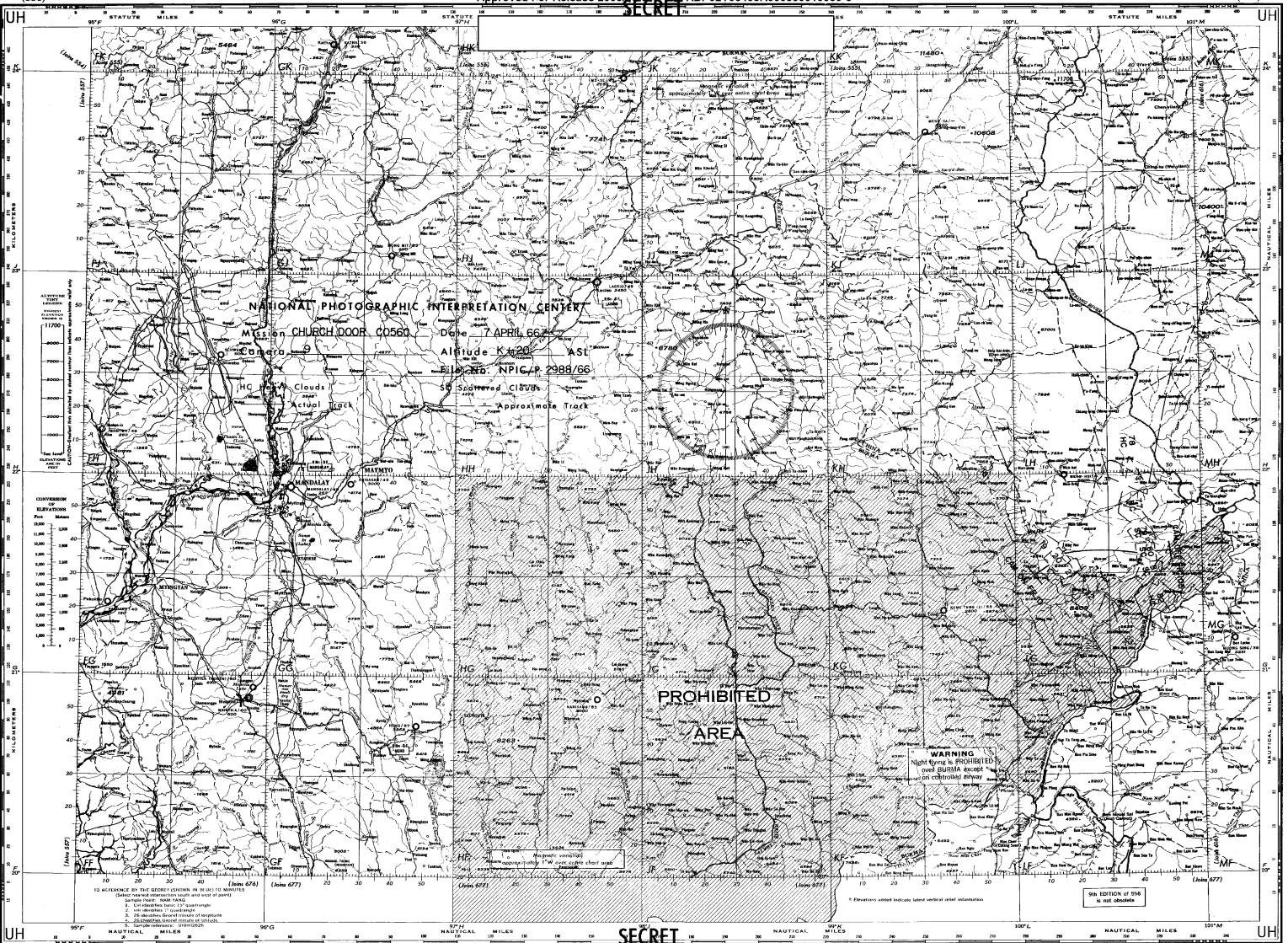
SECRET

(556)

Approved For Release 2003/08/05 : CIA-RDP02T06408R000800010060-6

(556)

25X



(556)

SECRET

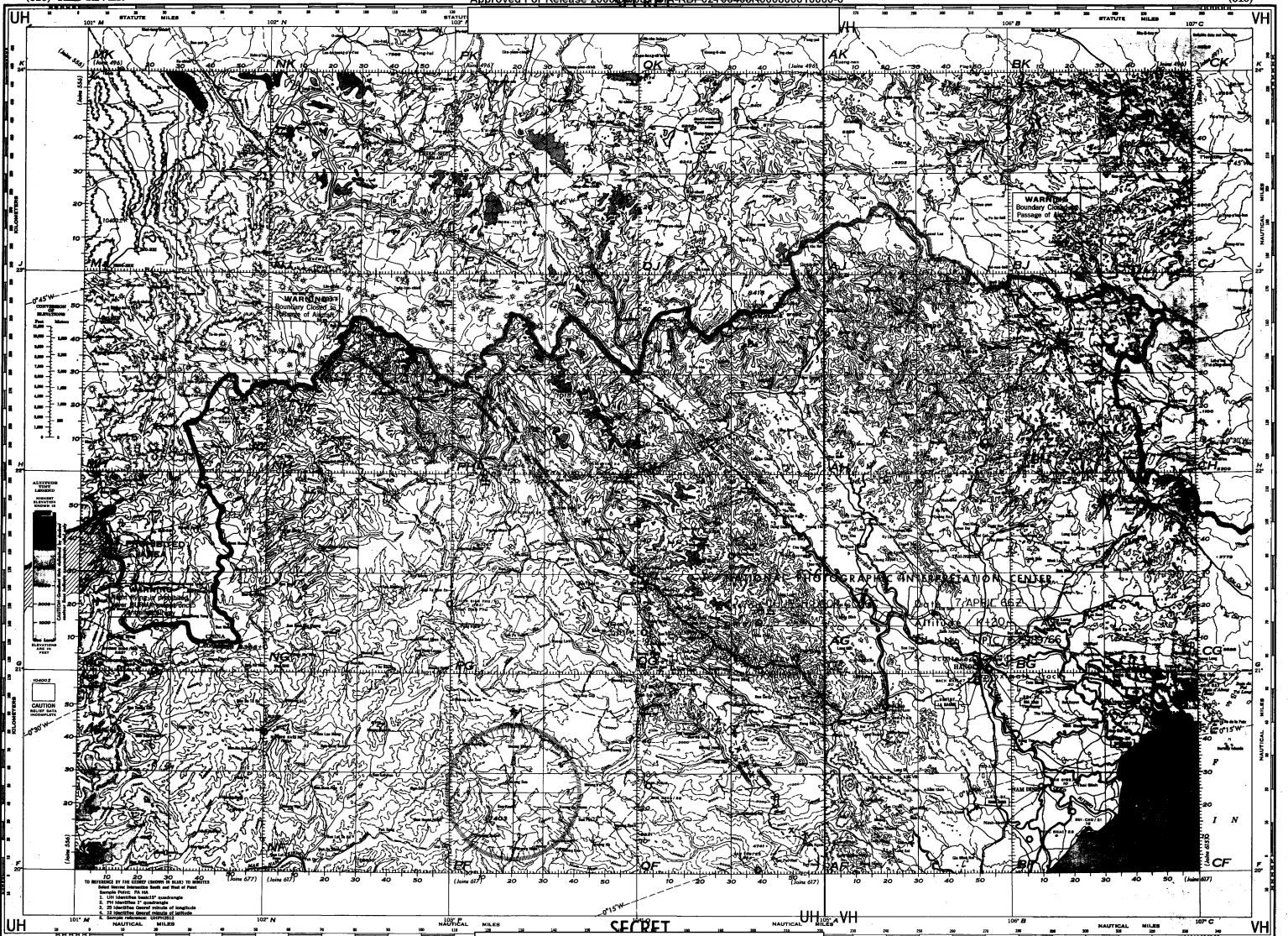
IRRAWADDY RIVER (556)

25X1

(616) RED RIVER

WORLD AERONAUTICAL CHART  
Approved For Release 2003/08/05 : CIA-RDP02T06408R000800010060-6

(616)



25X1

25X1

(616)

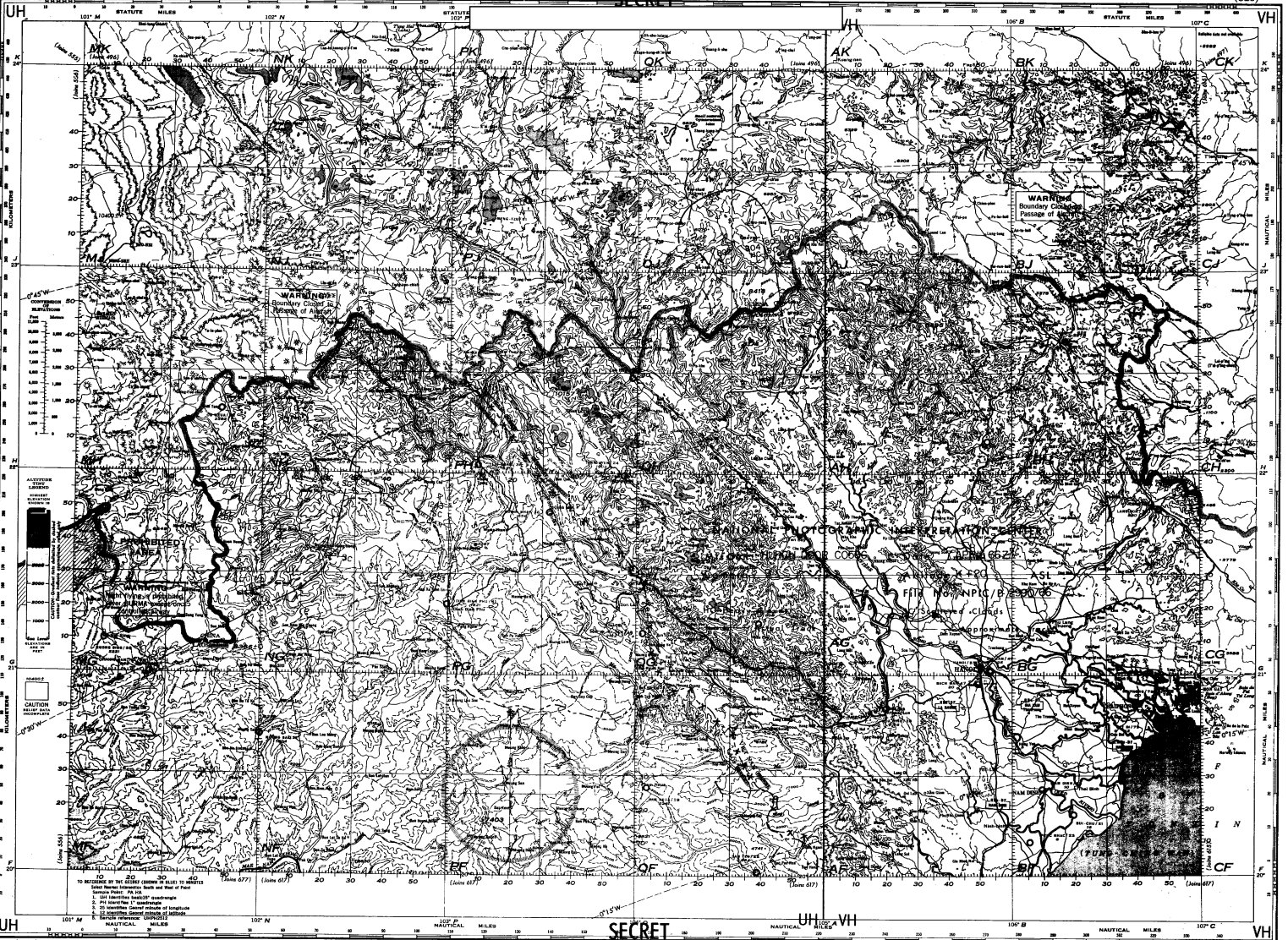
RED RIVER (616)  
WORLD-AERONAUTICAL CHART



(616) RED RIVER

Approved For Release 2003/08/05 : CIA-RDP02T06408R000800010060-6

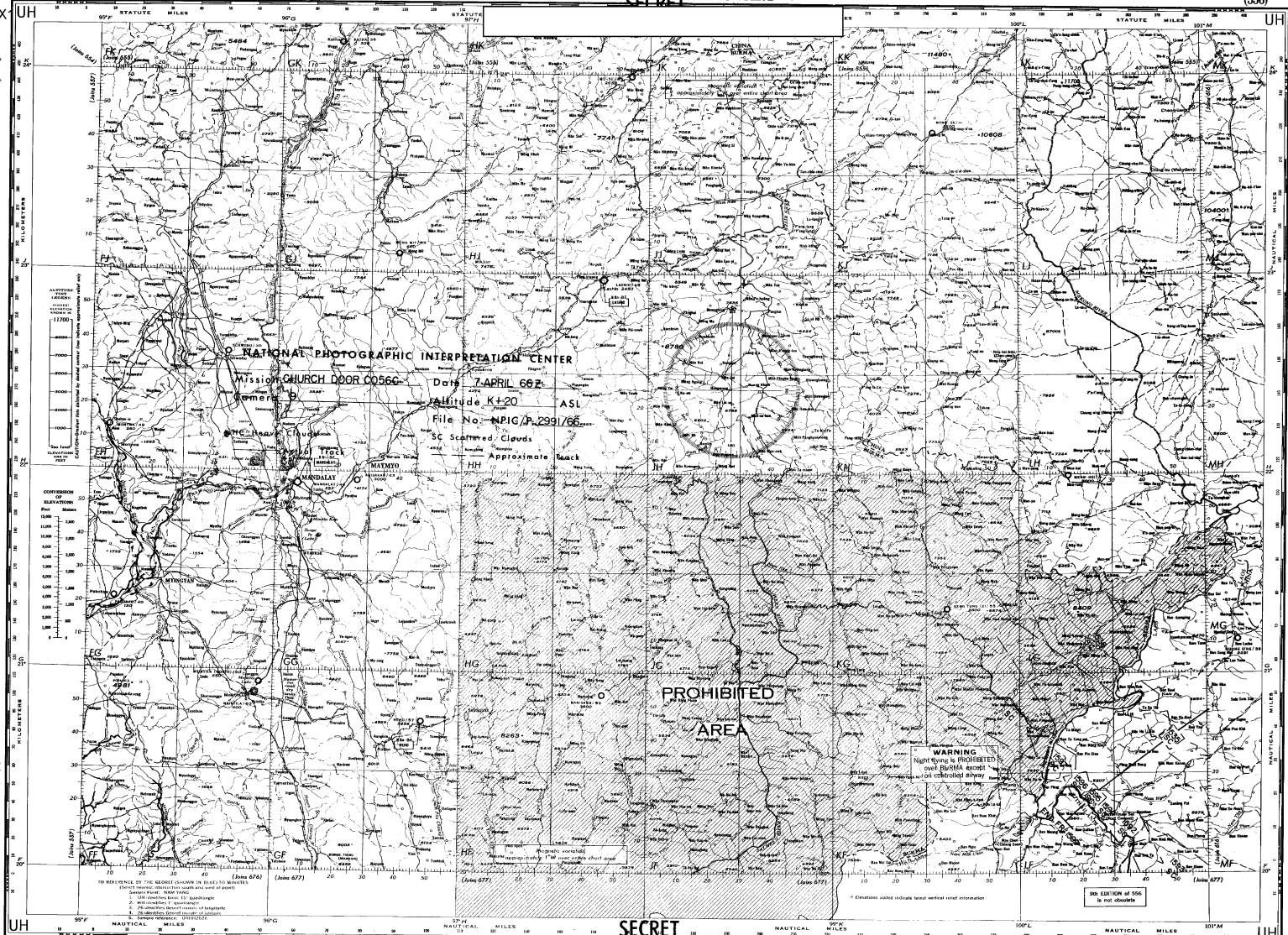
(616)



SECRET

RED RIVER (616)  
HURMA-CHINA-LAOS-VIET NAM

25X



25X1

Approved For Release 2003/08/05 : CIA-RDP02T06408R000800010060-6

Approved For Release 2003/08/05 : CIA-RDP02T06408R000800010060-6