

PHOTOGRAPHIC INTERPRETATION REPORT



MISSION 4031
17-24 AUGUST 1966

PART II

Declassification Review by NSA/DoD

AUGUST 1966

COPY 194

78 PAGES

25X

25X

GROUP 1 EXCLUDED FROM
AUTOMATIC DOWNGRADING
AND DECLASSIFICATION

25X1

Approved For Release 2005/11/17 : CIA-RDP03-00140R000100010037-1

Approved For Release 2005/11/17 : CIA-RDP03-00140R000100010037-1

~~TOP SECRET~~25X
25X

MISSION 4031, 17-24 AUGUST 1966

TABLE OF CONTENTS

PREFACE	2
TRACK OF MISSION	4
HIGHLIGHTS	10
MISSILES	12
AIR FACILITIES	36
NUCLEAR ENERGY	44
NAVAL ACTIVITY/PORTS	51
ELECTRONICS/COMMUNICATIONS	53
MILITARY ACTIVITY	54
ATTACHMENTS	APPENDIX

~~TOP SECRET~~25X
25X

MISSION 4031, 17-24 AUGUST 1966

OAK - PART II

MISSION 4031

PREFACE

THIS IS THE SECOND OF SEVERAL OAK REPORTS ON MISSION 4031 AND PROVIDES INFORMATION ON THE HIGHEST PRIORITY COMMITTEE ON OVERHEAD RECONNAISSANCE (COMOR) TARGETS OBSERVED ON THE PHOTOGRAPHY. THE REMAINDER OF THE COMOR TARGETS COVERED ON THIS PHOTOGRAPHY WILL BE REPORTED IN A SERIES OF OAK SUPPLEMENTS.

TARGETS ARE ARRANGED IN THE OAK BY SUBJECT AND WITHIN EACH SUBJECT BY COMOR TARGET NUMBER. TARGETS OF OPPORTUNITY OBSERVED DURING THE OAK REPORTING PERIOD ARE LISTED NUMERICALLY UNDER THE APPROPRIATE SUBJECT AFTER THE LISTING OF COMOR TARGETS. LOCATIONS OF TARGETS IN THIS REPORT ARE INDICATED BY THE COUNTRY CODE PRECEDING THE COORDINATES.

SELECTED PHOTOGRAPHIC REFERENCES FOR EACH TARGET OBSERVED AND REPORTED FOLLOW THE DESCRIPTION OF THE TARGET. PASS NUMBERS, SUFFIXED WITH A FOR ASCENDING AND D FOR DESCENDING, ARE LISTED FIRST, FOLLOWED BY FRAMES WHICH ARE INDICATED BY THE FRAME NUMBER WITH AN INDEX NUMBER RUNNING CONSECUTIVELY FROM THE BEGINNING OF EACH PASS -- 4/8 FOR EXAMPLE, MEANS FRAME 4, INDEX 8. UNIVERSAL REFERENCE GRID COORDINATES FOR NEW TARGETS ARE GIVEN IN PARENTHESIS AFTER THE INDEX NUMBER TO WHICH THEY APPLY. THIS GRID IS IDENTIFIED AS UNIVERSAL GRID NO 1, FEB 64. SYMBOLS INDICATING CONDITIONS WHICH AFFECT THE APPEARANCE OF THE TARGET ON THE PHOTOGRAPHY ARE -- C (CLEAR), SC (SCATTERED CLOUD COVER), HC (HEAVY CLOUD COVER), H (HAZE), CS (CLOUD SHADOW), S (SNOW), O (OBLIQUITY), SD (SEMIDARKNESS), D (DARKNESS), GC (GROUND COVER), CF (CAMOUFLAGE), AND GR (GROUND RESOLUTION). COLOR COVERAGE IS DESIGNATED BY THE LETTER C IMMEDIATELY FOLLOWING FRAME NUMBERS.

INTERPRETABILITY OF THE PHOTOGRAPHY IS CATEGORIZED AS G (GOOD), F (FAIR), OR P (POOR). THE EXTENT OF PHOTOGRAPHIC COVERAGE IS DENOTED BY THE SYMBOLS T (TOTAL) OR PT (PARTIAL). THE MODE OF COVERAGE IS INDICATED BY ST (STEREO), PS (PARTIAL STEREO), OR NS (NON-STEREO).

THE INITIAL SCAN OF THE PHOTOGRAPHY IS ACCOMPLISHED IN A SHORT TIME AND PRIOR TO FINAL REFINEMENT OF EPHEMERIS DATA. CONSEQUENTLY, FUTURE DETAILED ANALYSIS MAY RESULT IN MINOR

Approved For Release 2005/07/17 : CIA-RDP03-00140R000100010037-1

MISSION 4031, 17-24 AUGUST 1966

ALTERATIONS. MOREOVER, RECIPIENTS ARE CAUTIONED THAT THE IDENTIFICATION OF TARGETS IS BASED PRIMARILY ON PHOTOGRAPHY AND DOES NOT CONSTITUTE A FINISHED INTELLIGENCE JUDGMENT.

Approved For Release 2005/07/17 : CIA-RDP03-00140R000100010037-1

25X1

Approved For Release 2005/11/17 : CIA-RDP03-00140R000100010037-1

Next 5 Page(s) In Document Exempt

Approved For Release 2005/11/17 : CIA-RDP03-00140R000100010037-1

Highlights

MISSION 4031, 17-24 AUGUST 1966

TOP SECRET

HIGHLIGHTS

COMMENCING WITH THIS OAK, GRID COORDINATES WILL BE OMITTED FROM THE PHOTO REFERENCE LINE ON KH-7 MISSIONS, EXCEPT ON NEW TARGETS.

AS A RESULT OF A STEREO MIRROR MALFUNCTION [] ALL SUCCEEDING COVERAGE WAS IN A NON-STEREO MODE.

1. LANDES MISSILE TEST CENTER ([])

A NEW SILO IS IN A MID-STAGE OF CONSTRUCTION. A POSSIBLE BASE FOR ANOTHER SILO IS APPROXIMATELY 340 FT SOUTH. TWO NEW AREAS OF CONSTRUCTION ARE VISIBLE. A NEW TRACKING ANTENNA SIMILAR TO THE ONE AT HAMMAGUIR MISSILE TEST CENTER, ALGERIA IS APPROXIMATELY 3.5 NM SOUTH OF THE SUPPORT AREA.

2. KORDON SAM TRAINING CENTER ([])

THE UNIDENTIFIED AREA APPROXIMATELY 3.5 NM ESE OF LAUNCH SITE 1 IS PROBABLY COMPLETE. THE FACILITY HAS 2 ADJACENT, IDENTICAL HARDSTANDS WITH A LARGE REVETMENT WALL IMMEDIATELY NORTH. THE AREA ALSO HAS A CIRCULAR HARDSTAND INSIDE A C-SHAPED REVETMENT WHICH IS CONTIGUOUS TO THE REVETMENT WALL.

3. DALNYAYA CRUISE-MISSILE LAUNCH SITE (NO COMOR)

A CANVAS-COVERED MISSILE TRANSPORTER WITH PRIME MOVER IS LOCATED IN THE LAUNCH AREA. AN UNCOVERED KENNEL MISSILE IS IMMEDIATELY SOUTH IN THE MISSILE-HOLD AREA. THE MAIN SUPPORT FACILITY CONTAINS 4 CANVAS-COVERED MISSILE TRANSPORTERS.

4. AKHTUBINSK/VLADIMIROVKA AIRFIELD ([])

TWO IDENTICAL NEW-GENERATION AIRCRAFT (DISSIMILAR TO THOSE OBSERVED AT NOVOSIBIRSK AIRFIELD WEST OR RAMENSKOYE FLIGHT TEST CENTER) ARE LOCATED AT THE AIRFIELD.

TOP SECRET

MISSION 4031, 17-24 AUGUST 1966

SECURED AREA SE OF CASCADE BUILDING A IS IDENTIFIED AS A PROBABLE RECEIVING DRUM STORAGE AREA.

6. CHING-TAO SUBMARINE BASE

OB INCLUDES 1 R-CLASS SS, 3 W-CLASS SS, 1 PROBABLE S-1-CLASS OSS, 1 PROBABLE T-43-CLASS AG, 3 NEW CLASS LST, 3 LSIL/LSSL-CLASS LSIL, 1 GORDYY-CLASS ODD, 1 KRONSTADT-CLASS PC, 2 SHANGHAI-CLASS PTF, AND 1 LST-1-CLASS LST.

7. BUKHTA BECHEVINSKAYA PORT FACILITY

OB INCLUDES 1 PROBABLE W-CLASS TWIN CYLINDER SSG, 3 W-CLASS SS, 1 LAMA-CLASS AEM, 1 DON-CLASS AS, 1 OSKOL-CLASS ASL, AND 7 SERVICE CRAFT. ONE-HALF OF THE NW SHORE OF BUKHTA BECHEVINSKAYA IS BEING DEVELOPED.

8. CHING-TAO MOTOR TORPEDO BOAT BASE (NO COMOR)

OB INCLUDES 1 OSA-CLASS PTFG AND 1 KOMAR-CLASS PTG.

9. KLINTSY MILITARY INSTALLATION (MILITARY BONUS)

ON SW EDGE OF KLINTSY. OB INCLUDES 12 SCUD RESUPPLY TRANSPORT TRAILERS WITH PRIME MOVERS.

STATUS OF COMOR TARGET READOUT

THIS OAK REPORTS ON 164 COMOR TARGETS.

Missiles

MISSION 4031, 17-24 AUGUST 1966

TOP SECRET

MISSILES

YURYA ICBM COMPLEX

UR 5904N 04917E

NO NEW MISSILE ACTIVITY NOTED IN SEARCH AREA.

YURYA ICBM LAUNCH SITE 1

UR 5909N 04939E

TWO POSSIBLE MISSILE TRANSPORTERS ARE PARKED ON NORTH
END OF APRON IN FRONT OF THE 2 MISSILE READY BUILDINGS.

NO NEW CONSTRUCTION, CHANGES IN FACILITIES, OR
PREVIOUSLY UNREPORTED FEATURES OBSERVED.

YURYA ICBM LAUNCH SITE 3

UR 5913N 04925E

THE RIGHT MISSILE READY BUILDING AND THE SITE SUPPORT
FACILITY ARE CLOUD COVERED.

NO MISSILES, MISSILE-RELATED EQUIPMENT, NEW
CONSTRUCTION, CHANGES IN FACILITIES, OR PREVIOUSLY
UNREPORTED FEATURES OBSERVED.

YURYA ICBM LAUNCH SITE 4

UR 5916N 04922E

-- IDENTIFICATION ONLY.

-- 2 ADDITIONAL BUILDINGS ARE UNDER CONSTRUCTION IN
NO MISSILES OR
MISSILE-RELATED EQUIPMENT OBSERVED.

YURYA ICBM LAUNCH SITE 5

UR 5922N 04917E

NO MISSILES, MISSILE-RELATED EQUIPMENT, NEW
CONSTRUCTION, CHANGES IN FACILITIES, OR PREVIOUSLY

TOP SECRET

TOP SECRET

MISSION 4031, 17-24 AUGUST 1966

UNREPORTED FEATURES OBSERVED.

YURYA ICBM LAUNCH SITE 8

UR 5911N 04946E

NO MISSILES, MISSILE-RELATED EQUIPMENT, NEW CONSTRUCTION, CHANGES IN FACILITIES, OR PREVIOUSLY UNREPORTED FEATURES OBSERVED.

YURYA ICBM LAUNCH SITE 11

UR 5920N 04925E

NO MISSILES, MISSILE-RELATED EQUIPMENT, NEW CONSTRUCTION, CHANGES IN FACILITIES, OR PREVIOUSLY UNREPORTED FEATURES OBSERVED.

THE LAUNCH SITE IS CLOUD COVERED. SIX BUILDINGS OBSERVED IN THE SITE SUPPORT FACILITY. NO MISSILES, MISSILE-RELATED EQUIPMENT, NEW CONSTRUCTION, CHANGES IN FACILITIES, OR PREVIOUSLY UNREPORTED FEATURES OBSERVED.

SVOBODNYI ICBM COMPLEX

UR 5146N 12806E

THE LAUNCH SITE REPORTED AS SITE 33 IN PART I OF THE OAK FOR [REDACTED] IS THE SAME AS LAUNCH SITE 19 AND WILL BE DESIGNATED SITE 19. THE NUMBER 33 AT THE SVOBODNYI COMPLEX WILL BE DROPPED.

AN ADDITIONAL TYPE IIID SITE HAS BEEN NEWLY IDENTIFIED IN A MID-STAGE OF CONSTRUCTION APPROXIMATELY 23.5 NM SOUTH OF THE COMPLEX SUPPORT FACILITY AT 51-23N 127-57E. IT IS DESIGNATED LAUNCH SITE 34.

TOP SECRET

MISSION 4031, 17-24 AUGUST 1966

TOP SECRET

DROVYANAYA ICBM COMPLEX

UR 5131N 11300E

NO NEW MISSILE FACILITIES OBSERVED.

DROVYANAYA ICBM LAUNCH SITE 1

UR 5125N 11300E

TWO UNIDENTIFIED LINEAR OBJECTS ARE OBSERVED IN FRONT OF THE LEFT MISSILE READY BUILDING.

NO NEW CONSTRUCTION, CHANGES IN FACILITIES, OR PREVIOUSLY UNREPORTED FEATURES OBSERVED.

DROVYANAYA ICBM LAUNCH SITE 2

UR 5125N 11304E

THE DOOR ON THE LEFT SILO IS OPEN. TWO POSSIBLE MISSILES ARE IN THE RIM FACILITY.

NO NEW CONSTRUCTION, CHANGES IN FACILITIES, OR PREVIOUSLY UNREPORTED FEATURES OBSERVED.

DROVYANAYA ICBM LAUNCH SITE 3

UR 5120N 11301E

ONE PROBABLE MISSILE IS IN FRONT OF THE RIGHT MISSILE READY BUILDING.

NO NEW CONSTRUCTION, CHANGES IN FACILITIES, OR PREVIOUSLY UNREPORTED FEATURES OBSERVED.

TOP SECRET

MISSION 4031, 17-24 AUGUST 1966

DROVYANAYA ICBM LAUNCH SITE 4

UR 5127N 11303E

NO MISSILES, MISSILE-RELATED EQUIPMENT, NEW CONSTRUCTION, CHANGES IN FACILITIES, OR PREVIOUSLY UNREPORTED FEATURES OBSERVED.

DROVYANAYA ICBM LAUNCH SITE 6

UR 5120N 11254E

1 POSSIBLE MISSILE/MISSILE TRANSPORTER IS ON THE LOOP ROAD.

2 POSSIBLE MISSILES/MISSILE TRANSPORTERS ARE ON THE LOOP ROAD.

NO NEW CONSTRUCTION, CHANGES IN FACILITIES, OR PREVIOUSLY UNREPORTED FEATURES OBSERVED.

DROVYANAYA ICBM LAUNCH SITE 7

UR 5138N 11305E

NO MISSILES, MISSILE-RELATED EQUIPMENT, NEW CONSTRUCTION, CHANGES IN FACILITIES, OR PREVIOUSLY UNREPORTED FEATURES OBSERVED.

DROVYANAYA ICBM LAUNCH SITE 8

UR 5134N 11304E

NO MISSILES, MISSILE-RELATED EQUIPMENT, NEW CONSTRUCTION, CHANGES IN FACILITIES, OR PREVIOUSLY UNREPORTED FEATURES OBSERVED.

DROVYANAYA ICBM LAUNCH SITE 9

UR 5136N 11302E

NO MISSILES, MISSILE-RELATED EQUIPMENT, NEW CONSTRUCTION, CHANGES IN FACILITIES, OR PREVIOUSLY

TOP SECRET

Approved For Release 2005/11/17 : CIA-RDP03-00140R000100010037-1

MISSION 4031, 17-24 AUGUST 1966

UNREPORTED FEATURES OBSERVED.

DROVYANAYA ICBM LAUNCH SITE 10

UR 5133N 11307E

NO MISSILES, MISSILE-RELATED EQUIPMENT, NEW
CONSTRUCTION, CHANGES IN FACILITIES, OR PREVIOUSLY
UNREPORTED FEATURES OBSERVED.

DROVYANAYA ICBM LAUNCH SITE 11

UR 5136N 11307E

NO MISSILES, MISSILE-RELATED EQUIPMENT, NEW
CONSTRUCTION, CHANGES IN FACILITIES, OR PREVIOUSLY
UNREPORTED FEATURES OBSERVED.

DROVYANAYA ICBM LAUNCH SITE 12

UR 5129N 11300E

NO MISSILES, MISSILE-RELATED EQUIPMENT, NEW
CONSTRUCTION, CHANGES IN FACILITIES, OR PREVIOUSLY
UNREPORTED FEATURES OBSERVED.

DROVYANAYA ICBM LAUNCH SITE 13

UR 5131N 11304E

NO MISSILES, MISSILE-RELATED EQUIPMENT, NEW
CONSTRUCTION, CHANGES IN FACILITIES, OR PREVIOUSLY
UNREPORTED FEATURES OBSERVED.

TOP SECRET

TOP SECRET

MISSION 4031, 17-24 AUGUST 1966

DROVYANAYA ICBM LAUNCH SITE 14

UR 5129N 11306E

NO MISSILES, MISSILE-RELATED EQUIPMENT, NEW
CONSTRUCTION, CHANGES IN FACILITIES, OR PREVIOUSLY
UNREPORTED FEATURES OBSERVED.

DROVYANAYA ICBM LAUNCH SITE 15

UR 5126N 11302E

SITE REMAINS IN A LATE STAGE OF CONSTRUCTION.

NO MISSILES, MISSILE-RELATED EQUIPMENT, NEW
CONSTRUCTION, CHANGES IN FACILITIES, OR PREVIOUSLY
UNREPORTED FEATURES OBSERVED.

DROVYANAYA ICBM LAUNCH SITE 16

UR 5135N 11312E

NO MISSILES, MISSILE-RELATED EQUIPMENT, NEW
CONSTRUCTION, CHANGES IN FACILITIES, OR PREVIOUSLY
UNREPORTED FEATURES OBSERVED.

DROVYANAYA ICBM LAUNCH SITE 18

UR 5131N 11300E

SITE IS NOW COMPLETE.

NO MISSILES, MISSILE-RELATED EQUIPMENT, NEW
CONSTRUCTION, CHANGES IN FACILITIES, OR PREVIOUSLY
UNREPORTED FEATURES OBSERVED.

DROVYANAYA ICBM LAUNCH SITE 19

UR 5121N 11251E

SITE IS NOW COMPLETE.

NO MISSILES, MISSILE-RELATED EQUIPMENT, NEW
CONSTRUCTION, CHANGES IN FACILITIES, OR PREVIOUSLY

TOP SECRET

TOP SECRET

MISSION 4031, 17-24 AUGUST 1966

UNREPORTED FEATURES OBSERVED.

DROVYANAYA ICBM LAUNCH SITE 20

UR 5122N 11257E

SITE REMAINS IN A LATE STAGE OF CONSTRUCTION.

NO MISSILES, MISSILE-RELATED EQUIPMENT, NEW CONSTRUCTION, CHANGES IN FACILITIES, OR PREVIOUSLY UNREPORTED FEATURES OBSERVED.

DROVYANAYA ICBM LAUNCH SITE 21

UR 5120N 11304E

SITE IS NOW COMPLETE. A PROBABLE MISSILE TRANSPORTER ([] IN LENGTH), IS ON 1 SIDE OF THE SILO AND A POSSIBLE ERECTOR/LOADER IS ON THE OTHER SIDE. FOUR OTHER VEHICLES ARE ON THE GRADED ACCESS.

NO NEW CONSTRUCTION, CHANGES IN FACILITIES, OR PREVIOUSLY UNREPORTED FEATURES OBSERVED.

DROVYANAYA ICBM LAUNCH SITE 22

UR 5122N 11302E

SITE IS NOW COMPLETE.

[] - A POSSIBLE MISSILE TRANSPORTER IS ON THE GRADED ACCESS.

NO NEW CONSTRUCTION, CHANGES IN FACILITIES, OR PREVIOUSLY UNREPORTED FEATURES OBSERVED.

TOP SECRET

K1

Approved For Release 2005/08/01 : CIA-RDP03-00140R000100010037-1

TOP SECRET

MISSION 4031, 17-24 AUGUST 1966

25X

25X

25X

DROVYANAYA ICBM LAUNCH SITE 23

UR 5125N 11309E

SITE IS NOW COMPLETE.

NO MISSILES, MISSILE-RELATED EQUIPMENT, NEW
CONSTRUCTION, CHANGES IN FACILITIES, OR PREVIOUSLY
UNREPORTED FEATURES OBSERVED.

K1

DROVYANAYA ICBM LAUNCH SITE 24

UR 5123N 11306E

SITE IS NOW COMPLETE.

NO MISSILES, MISSILE-RELATED EQUIPMENT, NEW
CONSTRUCTION, CHANGES IN FACILITIES, OR PREVIOUSLY
UNREPORTED FEATURES OBSERVED.

K1

DROVYANAYA ICBM LAUNCH SITE 25

UR 5118N 11257E

SITE REMAINS IN A LATE STAGE OF CONSTRUCTION.

NO MISSILES, MISSILE-RELATED EQUIPMENT, NEW
CONSTRUCTION, CHANGES IN FACILITIES, OR PREVIOUSLY
UNREPORTED FEATURES OBSERVED.

K1

DROVYANAYA ICBM LAUNCH SITE 28

UR 5124N 11252E

IDENTIFICATION ONLY.

K1

DROVYANAYA ICBM LAUNCH SITE 41

UR 5130N 11302E

SITE REMAINS IN A MID-STAGE OF CONSTRUCTION. AN
ARCHED-ROOF BUILDING IS NEAR THE SILO STRUCTURE.

TOP SECRET

MISSION 4031, 17-24 AUGUST 1966

NO MISSILES, MISSILE-RELATED EQUIPMENT, NEW CONSTRUCTION, CHANGES IN FACILITIES, OR PREVIOUSLY UNREPORTED FEATURES OBSERVED.

DROVYANAYA ICBM COMPLEX SUPPORT FACILITY UR 5131N 11300E

NO MISSILES, MISSILE-RELATED EQUIPMENT, NEW CONSTRUCTION, CHANGES IN FACILITIES, OR PREVIOUSLY UNREPORTED FEATURES OBSERVED.

DROVYANAYA ICBM RAIL-TO-ROAD TSFR POINT UR 5130N 11302E

TWO POSSIBLE MISSILES/MISSILE TRANSPORTERS ARE PARKED AT THE END OF 1 BUILDING. A LONG LINEAR OBJECT IS NEAR 1 OF THE LARGE CHECKOUT BUILDINGS AND HAS BEEN IN THIS POSITION ON SEVERAL MISSIONS.

NO NEW CONSTRUCTION, CHANGES IN FACILITIES, OR PREVIOUSLY UNREPORTED FEATURES OBSERVED.

KOSTROMA ICBM COMPLEX

UR 5746N 04101E

TWO CONFIRMED TYPE IIID LAUNCH SITES AND 1 POSSIBLE SITE ARE NEWLY IDENTIFIED.

SITE 14 IS IN A MID-STAGE OF CONSTRUCTION AT 58-07N 041-44E, APPROXIMATELY 4.4 NM ENE OF POSSIBLE CONTROL SITE 12. THE SITE CONSISTS OF A SILO UNDER CONSTRUCTION IN AN EXCAVATION, 1 ARCH-ROOFED BUILDING, 1 FLAT ROOF BUILDING, 1 POSSIBLE SMALL BUILDING, AND 1 POSSIBLE BUILDING UNDER CONSTRUCTION.

SITE 15 IS IN A MID-STAGE OF CONSTRUCTION AT 58-03N 041-40E, APPROXIMATELY 3.1 NM SE OF POSSIBLE CONTROL SITE 12. THE SECURED SITE CONSISTS OF A SILO UNDER CONSTRUCTION IN AN EXCAVATION, 2 BUILDINGS, AND A THIRD BUILDING UNDER CONSTRUCTION.

TOP SECRET

TOP SECRET

MISSION 4031, 17-24 AUGUST 1966

POSSIBLE SITE 16 IS FENCED AND IN AN UNDETERMINED STAGE OF CONSTRUCTION AT 58-09N 041-22E, APPROXIMATELY 8.4 NM WNW OF POSSIBLE CONTROL SITE 12.

KOSTROMA ICBM LAUNCH SITE 1

UR 5801N 04122E

IDENTIFICATION ONLY.

KOSTROMA ICBM LAUNCH SITE 2

UR 5802N 04106E

A PROBABLE TRANSPORTER IS AT THE REAR OF THE LEFT LAUNCH PAD. A PROBABLE MISSILE ON A TRANSPORTER IS IN FRONT OF THE MISSILE READY BUILDING BEHIND THE LEFT LAUNCH PAD.

NO NEW CONSTRUCTION, CHANGES IN FACILITIES, OR PREVIOUSLY UNREPORTED FEATURES OBSERVED.

KOSTROMA ICBM LAUNCH SITE 3

UR 5758N 04109E

A MISSILE IS ON A TRANSPORTER IN FRONT OF THE RIGHT MISSILE READY BUILDING AND A PROBABLE MISSILE IS ON A TRANSPORTER IN FRONT OF THE RIGHT LAUNCH PAD. AN ARCH-ROOFED BUILDING IS UNDER CONSTRUCTION TO THE RIGHT OF THE RIGHT MISSILE READY BUILDING.

NO NEW CONSTRUCTION, CHANGES IN FACILITIES, OR PREVIOUSLY UNREPORTED FEATURES OBSERVED.

TOP SECRET

MISSION 4031, 17-24 AUGUST 1966

KOSTROMA ICBM LAUNCH SITE 4

UR 5805N 04139E

THREE SMALL VEHICLES OBSERVED ON ROAD IN LAUNCH SITE.

NO MISSILES, MISSILE-RELATED EQUIPMENT, NEW CONSTRUCTION, CHANGES IN FACILITIES, OR PREVIOUSLY UNREPORTED FEATURES OBSERVED.

BALTA MRBM LAUNCH SITE 1

UR 4801N 02933E

ALL 4 LAUNCH POSITIONS ARE OCCUPIED. SEVERAL VEHICLES/PIECES OF EQUIPMENT OBSERVED.

NO NEW CONSTRUCTION, CHANGES IN FACILITIES, OR PREVIOUSLY UNREPORTED FEATURES OBSERVED.

NO CHANGE OBSERVED IN FACILITY.

BALTA MRBM LAUNCH SITE 2

UR 4807N 02934E

ALL 4 LAUNCH POSITIONS ARE OCCUPIED. AT LEAST 8 VEHICLES/PIECES OF EQUIPMENT OBSERVED. PART OF SITE SUPPORT FACILITY IS CLOUD COVERED.

NO NEW CONSTRUCTION, CHANGES IN FACILITIES, OR PREVIOUSLY UNREPORTED FEATURES OBSERVED.

NO CHANGE OBSERVED IN FACILITY.

KAKASHURA IRBM LAUNCH SITE

UR 4239N 04727E

FOUR PROBABLE MISSILES ON TRANSPORTERS ARE IN FRONT OF OLD RIM BUILDING AT SUPPORT SITE, A PROBABLE ERECTOR AND A FUEL TRANSPORTER ARE AT THE LAUNCH SITE, AND ANOTHER PROBABLE ERECTOR IS VISIBLE IN THE ENTRANCE TO THE OLD RIM BUILDING. CONSTRUCTION CONTINUES ON A RIM BUILDING AND 2 OTHER BUILDINGS IN THE

NO OTHER SIGNIFICANT CHANGES

TOP SECRET

MISSION 4031, 17-24 AUGUST 1966

OBSERVED.

GELLI IRBM LAUNCH SITE

UR 4245N 04728E

FIVE MISSILE TRANSPORTERS ARE PARKED ACROSS THE ROAD FROM THE [REDACTED] 2 PROBABLE ERECTORS ARE IN THE MOTOR POOL AREA, AND 3 NOSE CONE VANS ARE IN THE [REDACTED] THE LAUNCH SITE IS BEING TONED DOWN BY THE APPLICATION OF DARK MATERIAL TO THE SOIL AND LOOP ROAD. A RIM BUILDING AND A SMALLER DRIVE-IN BUILDING ARE STILL UNDER CONSTRUCTION IN [REDACTED] FACILITY. ROOFING IS APPROXIMATELY 50 PERCENT COMPLETE ON THE NEW BUILDING IN THE MOTOR POOL. NO OTHER SIGNIFICANT CHANGES OBSERVED.

GRESK MRBM LAUNCH SITE 1

UR 5314N 02742E

NO ERECTORS ARE OBSERVED ON THE PADS. THIRTEEN FUEL TRANSPORT TRAILERS AND 4 PRIME MOVERS ARE PARKED EAST OF THE EASTERNMOST PAD. IMMEDIATELY TO THE EAST IN A REVETTED AREA ARE 7 FUEL STORAGE TANKS AND FURTHER EAST 6 FUEL/OXIDIZER TRAILERS ARE IN A REVETTED AREA. SOUTHEAST OF THE EASTERN PAD ARE 3 FUEL/OXIDIZER TRAILERS IN A REVETTED LOCATION WITH 2 MORE TRAILER-LIKE OBJECTS OBSERVED ON THE OPPOSITE SIDE OF THE ROAD.

NO CHANGE OBSERVED IN [REDACTED] FACILITY.

IECAVA MRBM LAUNCH SITE 1

UR 5635N 02403E

AT LEAST 3 OF THE 4 LAUNCH POSITIONS APPEAR OCCUPIED. APPROXIMATELY 20 VEHICLES/PIECES OF EQUIPMENT OBSERVED.

NO NEW CONSTRUCTION, CHANGES IN FACILITIES, OR PREVIOUSLY UNREPORTED FEATURES OBSERVED.

NO CHANGE OBSERVED IN [REDACTED]

TOP SECRET

TOP SECRET

MISSION 4031, 17-24 AUGUST 1966

FACILITY.

IECAVA MRBM LAUNCH SITE 2

UR 5639N 02408E

AT LEAST 2 POSITIONS APPEAR OCCUPIED. APPROXIMATELY 30
VEHICLES/PIECES OF EQUIPMENT OBSERVED.

NO NEW CONSTRUCTION, CHANGES IN FACILITIES, OR
PREVIOUSLY UNREPORTED FEATURES OBSERVED.

JELGAVA FIXED FIELD MRBM SITE 1

UR 5638N 02352E

NO MISSILES, MISSILE-RELATED EQUIPMENT, NEW
CONSTRUCTION, CHANGES IN FACILITIES, OR PREVIOUSLY
UNREPORTED FEATURES OBSERVED.

JELGAVA FIXED FIELD MRBM SITE 2

UR 5644N 02355E

NO MISSILES, MISSILE-RELATED EQUIPMENT, NEW
CONSTRUCTION, CHANGES IN FACILITIES, OR PREVIOUSLY
UNREPORTED FEATURES OBSERVED.

KOROSTEN MRBM LAUNCH SITE 2

UR 5052N 02830E

ONLY THE SW PAD AND PART OF THE SITE SUPPORT AREA ARE
VISIBLE. THERE IS AN ERECTOR VISIBLE ON THE SW PAD.

NO NEW CONSTRUCTION, CHANGES IN FACILITIES, OR
PREVIOUSLY UNREPORTED FEATURES OBSERVED.

TOP SECRET

MISSION 4031, 17-24 AUGUST 1966

NIGRANDE IRBM LAUNCH SITE

UR 5631N 02202E

FIVE FUEL/OXIDIZER TRAILERS AND 5 OTHER VEHICLES/PIECES OF EQUIPMENT ARE AT LAUNCH SITE. PROBABLE ERECTORS ARE ON THE LOOP ROAD PATTERN NEAR EACH LAUNCH PAD. A POSSIBLE MISSILE ON TRANSPORTER IS IN FRONT OF EACH OF THE 2 NORTHERN READY BUILDINGS AND A THIRD POSSIBLE MISSILE ON TRANSPORTER IS IN A CLEARING ACROSS THE ROAD BETWEEN THE SAME 2 READY BUILDINGS.

NO NEW CONSTRUCTION, CHANGES IN FACILITIES, OR PREVIOUSLY UNREPORTED FEATURES OBSERVED.

POLOTSK MRBM LAUNCH SITE 1

UR 5522N 02844E

THE THREE NORTHEAST PADS AND PART OF THE SITE SUPPORT AREA ARE PARTIALLY VISIBLE.

NO MISSILES, MISSILE-RELATED EQUIPMENT, NEW CONSTRUCTION, CHANGES IN FACILITIES, OR PREVIOUSLY UNREPORTED FEATURES OBSERVED.

RISTI MRBM LAUNCH SITE 1

UR 5904N 02403E

IDENTIFICATION ONLY.

RISTI MRBM LAUNCH SITE 2

UR 5906N 02406E

-- 2 LAUNCH POSITIONS APPEAR OCCUPIED. THE OTHER 2 POSITIONS ARE CLOUD COVERED. APPROXIMATELY 20 VEHICLES/PIECES OF EQUIPMENT OBSERVED. PART OF SITE SUPPORT FACILITY IS CLOUD COVERED.

NO NEW CONSTRUCTION, CHANGES IN FACILITIES, OR

TOP SECRET

MISSION 4031, 17-24 AUGUST 1966

PREVIOUSLY UNREPORTED FEATURES OBSERVED.

SHCHITNO FIXED FIELD MRBM SITE 1

UR 5243N 02458E

NO MISSILES, MISSILE-RELATED EQUIPMENT, NEW CONSTRUCTION, CHANGES IN FACILITIES, OR PREVIOUSLY UNREPORTED FEATURES OBSERVED.

SHCHITNO FIXED FIELD MRBM SITE 2

UR 5241N 02457E

NO MISSILES, MISSILE-RELATED EQUIPMENT, NEW CONSTRUCTION, CHANGES IN FACILITIES, OR PREVIOUSLY UNREPORTED FEATURES OBSERVED.

UGOLNYY MRBM - IRBM LAUNCH SITE

UR 6447N 17756E

ERECTORS ARE IN POSITION ON EACH LAUNCH PAD AND 1 PIECE OF UNIDENTIFIED EQUIPMENT IS ALSO PRESENT ON 2 OF THE PADS. EIGHTEEN VEHICLES ARE PARKED ON ROADS IN THE SITE. TEN PROBABLE NOSECONE VANS ARE IN THE

A PROBABLE EXTENSION TO THE EAST END OF THE SMALLER MISSILE READY BUILDING IS VISIBLE. ONE OF THE 3 BUILDINGS EAST OF THE SITE SUPPORT FACILITY REMAINS INCOMPLETE.

ERECTORS ARE IN POSITION ON 3 LAUNCH PADS. NO OTHER SIGNIFICANT CHANGES SINCE

TOP SECRET

K1

Approved For Release 2005/01/14 : CIA-RDP03-00140R000100010037-1

TOP SECRET

MISSION 4031, 17-24 AUGUST 1966

25X

25X

25X

KAMCHATKA PENINSULA MISSILE IMPACT AREA UR 5722N 16142E

K6
K6
TWO CRATERS, NEW SINCE [REDACTED]
OBSERVED ON PASS [REDACTED] ANOTHER CRATER, PROBABLY NEW
SINCE [REDACTED], IS VISIBLE ON PASS [REDACTED] A
TOTAL OF 138 CRATERS (11 PROBABLE) OF VARYING SIZE AND
AGE ARE OBSERVED.

25X

25X

K1

25X

25X

MISSION 4031, 17-24 AUGUST 1966

ON THE SOUTH EDGE OF THE SUPPORT AREA, A NEW AREA CONTAINS A MULTILEVEL BUILDING UNDER CONSTRUCTION CONNECTED BY ROAD TO A LADDER PATTERN THAT HAS 3 DRIVE-THROUGH STRUCTURES. ANOTHER UNIDENTIFIED BUILDING IS ALSO UNDER CONSTRUCTION IN THIS AREA. NEW PAVED ROADS ARE THROUGHOUT THE AREA AND 1 CONNECTS TO THE EXISTING HELICOPTER PAD. A LARGE BUILDING IS UNDER CONSTRUCTION IMMEDIATELY EAST OF THE GUARD POST AT THE ENTRANCE ROAD. ANOTHER LARGE, NEW BUILDING IS UNDER CONSTRUCTION SOUTH OF THIS AREA.

(SEE ATTACHMENT)

VINH SAM SEARCH

VN 1840N 10540E

FIFTEEN PERCENT OF THE AREA IS COVERED BY 50 PERCENT CLOUD-COVERED PHOTOGRAPHY. FRAME 11 COVERS A NARROW STRIP AT THE EXTREME NORTH END. FRAME 12 CENTERS ON THE CITY OF VINH, AND FRAME 13 COVERS AN AREA 20 NM SOUTH OF VINH. NO EVIDENCE OF NEW SAM ACTIVITY OBSERVED IN CLOUD-FREE AREAS.

TSANG-SHANG PROBABLE CD POSITIONS

CH 3724N 11956E

NO EVIDENCE OF CRUISE MISSILE SITES OR MISSILE-RELATED EQUIPMENT CAN BE FOUND ALONG THE COAST FROM 37-22N 119-55E TO 37-26N 120-04E. SEVERAL SMALL UNOCCUPIED REVETMENTS THAT MAY BE USED FOR AAA OR HEAVY ARTILLERY ARE LOCATED ON THE SHORE ALONG WITH SEVERAL BUILDINGS AND SECTIONS OF PROBABLE BAMBOO MATTING.

PAO-TOU SAM SEARCH AREA

CH 4039N 10958E

-- APPROXIMATELY 5 PERCENT OF THE CENTER PORTION OF THE SEARCH AREA IS COVERED BY 80 PERCENT CLOUD-FREE PHOTOGRAPHY. NO SAM OR MISSILE-ASSOCIATED ACTIVITY OBSERVED.

-- APPROXIMATELY 10 PERCENT OF THE NORTHERN PART OF

TOP SECRET

MISSION 4031, 17-24 AUGUST 1966

THE SEARCH AREA IS COVERED BY 95 PERCENT CLOUD-FREE PHOTOGRAPHY. NO SAM SITES OR MISSILE-RELATED ACTIVITY OBSERVED.

TALLINN PROB LONG RANGE SAM LCH CPLX

UR 5924N 02419E

THE PRESENCE OF A LAUNCHER AND 2 PROBABLE MISSILE DOLLIES AT EACH LAUNCH POSITION OF LAUNCH SITES D AND E IS NOW CONFIRMED. THIS EQUIPMENT HAD NOT BEEN INSTALLED AS OF MISSION [REDACTED] BUT WAS PROBABLY IN PLACE ON MISSION [REDACTED] HOWEVER, THE SITE CONTROL REVETMENTS ARE STILL UNOCCUPIED. FOUR PROBABLE BURIED TANKS MEASURING APPROXIMATELY [REDACTED] IN DIAMETER ARE OBSERVED UNDER CONSTRUCTION ON THE LOOP ROAD ON THE NORTH SIDE OF THE ACCESS ROAD TO LAUNCH SITE E. THIS ACTIVITY WAS FIRST DISCERNIBLE ON [REDACTED] AND WAS NOT EVIDENT ON [REDACTED]

THE LAUNCHERS AT POSITIONS 3 AND 6 AT LAUNCH SITE A APPEAR TO HAVE BEEN MOVED OFF OF THE LAUNCH POINTS SINCE [REDACTED] NO OTHER CHANGE IS OBSERVED AT LAUNCH SITES A, B, AND C, ALTHOUGH MOVEMENT OF THE PROBABLE MISSILE DOLLIES AT SEVERAL LAUNCH POSITIONS IS EVIDENT SINCE [REDACTED]

IN THE ELECTRONIC SITE, THE 4 PROBABLE VANS OBSERVED ON THE RADAR MOUND AT POSITION 5 ON [REDACTED] HAVE NOW BEEN REMOVED. FOUR PROBABLE VANS ARE NOW PARKED IMMEDIATELY SOUTH OF THE MOUND. NO OTHER CHANGE IS OBSERVED.

CONSTRUCTION CONTINUES AT THE AIR WARNING FACILITY 3.5 NM SE OF THE LAUNCH COMPLEX. THE MOUNDS APPEAR TO BE COMPLETE, BUT THE ELECTRONIC EQUIPMENT HAS NOT BEEN EMPLACED.

IN THE MISSILE ASSEMBLY AND CHECKOUT AREA, AN UNIDENTIFIED VEHICLE/PIECE OF EQUIPMENT IS OBSERVED IN FRONT OF THE SOUTHERN LARGE REVETTED BUILDING. AN UNIDENTIFIED LINEAR OBJECT APPROXIMATELY [REDACTED] IN LENGTH AND WHAT APPEARS TO BE A CANVAS-COVERED PIECE OF EQUIPMENT APPROXIMATELY [REDACTED] LONG ARE OBSERVED NEAR THE WESTERN DRIVE-THROUGH BUILDING ON THE MIDDLE ROAD OF THE 3 EAST-WEST ROADS.

TOP SECRET

TOP SECRET

MISSION 4031, 17-24 AUGUST 1966

NO MISSILES ARE IDENTIFIED AT THE COMPLEX.

LIEPAJA PROB LONG RANGE SAM LCH CPLX UR 5633N 02111E

CONSTRUCTION HAS CONTINUED THROUGHOUT THE ENTIRE COMPLEX SINCE IT WAS OBSERVED ON PHOTOGRAPHY OF COMPARABLE SCALE ON

LAUNCH SITES B AND D ARE IN A LATE STAGE OF CONSTRUCTION, SITE E IN A MID-TO-LATE STAGE, AND SITES A AND C IN A MID-STAGE. CONSTRUCTION OF THE ELECTRONIC SITE IS VIRTUALLY COMPLETE AND THE MISSILE ASSEMBLY AND CHECKOUT AREA IS PROBABLY IN A MID-TO-LATE STAGE OF CONSTRUCTION.

A KEYHOLE-SHAPED PROBABLE CONCRETE APRON IS NOW PRESENT AT THE LAUNCH POINT OF EACH POSITION OF LAUNCH SITES B, D, AND E. LAUNCH POSITION REVETMENTS HAVE BEEN CONSTRUCTED AT THE 3 SITES, AND SERVICE ROADS OF SITES B AND D ARE SMOOTH SURFACED. CONSTRUCTION OF REVETTED CONTROL CENTERS OF SITES B AND D ARE IN A LATE STAGE AND IN AN EARLY-TO-MID STAGE AT SITE E. A TANK OBSERVED ON AT THE ENTRANCE TO THE NOW REVETTED CONTROL CENTER OF SITE D NOW APPEARS EARTH COVERED.

CIRCULAR PATTERNS AT COMPARABLE LOCATIONS AT SITES B AND E INDICATE COVERED TANKS ARE PRESENT.

THREE LAUNCH POSITIONS AT SITE C (C-3, C-4, AND C-5) ARE OBSCURED BY TREE SHADOWS. LAUNCH POSITIONS C-1 AND C-2 ARE IN A MID-STAGE OF CONSTRUCTION, HAVING PROGRESSED SINCE AND POSITION C-6 HAS BEEN GRADED SINCE BUT IS IN AN EARLIER STAGE OF CONSTRUCTION. STATUS OF LAUNCH POSITION REVETMENT CONSTRUCTION IS UNDETERMINED. CONSTRUCTION OF THE CONTROL CENTER AT SITE C IS IN AN INITIAL STAGE. AN OPEN TANK IS WITHIN THE CENTRAL AREA OF THE SITE.

AT LAUNCH SITE A, POSITION A-4, GRADING HAS TAKEN PLACE SINCE AND RAILS OR RAILBEDS HAVE BEEN INSTALLED AT LAUNCH POSITION A-5. REVETMENTS ARE NOW PRESENT AT POSITIONS A-5 AND A-6. CONSTRUCTION OF THE SITE CONTROL CENTER HAS NOT BEGUN. SERVICE ROADS OF SITE A

TOP SECRET

MISSION 4031, 17-24 AUGUST 1966

ARE UNIMPROVED.

CONSTRUCTION OF REVETMENT WALLS AT THE ELECTRONIC SITE CONTROL CENTER IS NEARLY COMPLETE. THEY WERE IN AN INITIAL STAGE IN [] NO CHANGES OR ADDITIONS ARE OBSERVED AT THE 5 RADAR POSITIONS OF THE ELECTRONIC SITE. A NEW PROBABLE DRAINAGE DITCH HAS BEEN EXTENDED ACROSS THE CENTER OF THE ELECTRONIC SITE SINCE [] A NEW GROUND SCAR EXTENDS FROM THE VICINITY OF THE CONTROL CENTER IN THE GENERAL DIRECTION OF THE AIR WARNING RADAR SITE LOCATED APPROXIMATELY 2 NM NE OF THE LAUNCH COMPLEX. EXTENT OF THE GROUND SCAR IS UNDETERMINED.

REVETMENT WALLS, CONSTRUCTED SINCE [] EXTEND ALONG THE EASTERN ENDS AND BETWEEN THE 2 ADJACENT 120- X 80-FT BUILDINGS IN THE MISSILE ASSEMBLY AND CHECKOUT AREA, AND ALONG THE NORTHERN SIDE OF THE NORTHERNMOST BUILDING. A WALL IS UNDER CONSTRUCTION ALONG THE SIDE OF THE SOUTHERNMOST BUILDING. THE APRON SERVICING THE 2 BUILDINGS IS NOW SMOOTH SURFACED. A PROBABLE DRIVE-THROUGH BUILDING AT THE SE CORNER OF THE MISSILE ASSEMBLY AND CHECKOUT AREA HAS BEEN EXTERNALLY COMPLETED SINCE [] THREE PROBABLE VANS OR VEHICLES ARE PARKED ON AN IMPROVED AREA ALONG THE NORTHERNMOST ROAD IN THIS AREA. PROBABLE LIGHT POLES HAVE BEEN INSTALLED ALONG THIS ROAD.

TWELVE POSSIBLE CANVAS-COVERED VEHICLES OR PIECES OF EQUIPMENT ARE PARKED JUST SOUTH OF THE INTERSECTION OF THE LAUNCH AREA MAIN ROAD AND THE ACCESS ROAD SERVICING LAUNCH SITE C. NUMEROUS TRUCKS AND OTHER VEHICLES ASSOCIATED WITH CONSTRUCTION ARE OBSERVED WITHIN THE COMPLEX.

THE 4 RADAR MOUNDS ARE NEARING COMPLETION AT THE AIR WARNING RADAR SITE UNDER CONSTRUCTION NE OF THE LAUNCH COMPLEX. REVETMENTS FOR THE CENTRAL POSITION OF THE SITE ARE IN A MID-STAGE OF CONSTRUCTION. CONSTRUCTION OF THE CONTROL BUILDING AT THE SITE HAS PROGRESSED SINCE [] BUT IT DOES NOT APPEAR COMPLETE. A NEW GROUND SCAR IS OBSERVED EXTENDING A SHORT DISTANCE FROM THE SITE IN THE DIRECTION OF THE LAUNCH COMPLEX. ANOTHER NEW GROUND SCAR LEADS FROM THE RADAR SITE TO THE 2 UNIDENTIFIED FACILITIES TO THE NORTH. NO ADDITIONAL CHANGE HAS OCCURRED IN THE STATUS OF THESE FACILITIES SINCE []

GROUND SUPPORT EQUIPMENT, PROBABLY FOR THE LAUNCH

MISSION 4031, 17-24 AUGUST 1966

COMPLEX, REMAINS PARKED AT LIEPAJA AIRFIELD EAST. TWO TRACKING/GUIDANCE RADARS ARE NOW PARKED IN THE AREA WHERE ONE WAS OBSERVED IN MAY.

NO MISSILES ARE IDENTIFIED AT THE LAUNCH COMPLEX OR IN THE PARKING AREA AT THE AIRFIELD.

K1 []
THANH HOA SAM SITE A17-2

VN 1945N 10547E

NO MISSILES, MISSILE-RELATED EQUIPMENT, NEW CONSTRUCTION, CHANGES IN FACILITIES, OR PREVIOUSLY UNREPORTED FEATURES OBSERVED.

K1 []
THANH HOA SAM SITE A19-2

VN 1941N 10546E

IDENTIFICATION ONLY.

K1 []
THANH HOA SAM SITE A14-2

VN 1945N 10520E

IDENTIFICATION ONLY.

K1 []
VINH AREA FIELD SAM SITE 3

VN 1810N 10542E

NO MISSILES, MISSILE-RELATED EQUIPMENT, NEW CONSTRUCTION, CHANGES IN FACILITIES, OR PREVIOUSLY UNREPORTED FEATURES OBSERVED.

K1 []
VINH SAM SITE A07-2

VN 1840N 10542E

NO MISSILES, MISSILE-RELATED EQUIPMENT, NEW CONSTRUCTION, CHANGES IN FACILITIES, OR PREVIOUSLY UNREPORTED FEATURES OBSERVED.

TOP SECRET

MISSION 4031, 17-24 AUGUST 1966

STARYY KILDIN CRUISE-MISSILE LAUNCH SITE 2 UR 6922N 03404E

SITE CONSISTS OF 2 CONFIRMED LAUNCH POSITIONS ORIENTED ON AN AZIMUTH OF 000 DEGREES WITH A CENTRAL GUIDANCE AREA CONTAINING UNIDENTIFIED PIECES OF EQUIPMENT. OCCUPANCY OF THE LAUNCH POSITIONS IS UNDETERMINED. AT LEAST 3 BUILDINGS ARE IDENTIFIED WITHIN THE SINGLE FENCED AREA.

KORDON SAM TRAINING CENTER

UR 4725N 04804E

ONLY SITES 1A, 1B, 1, 2, 3, AND THE UNIDENTIFIED AREA ESE OF THE LAUNCH LINE ARE COVERED. SITES 4 AND 5 ARE PARTIALLY COVERED.

SITES 1A AND 1B ARE UNOCCUPIED. SITE 1 HAS 6 REVETTED LAUNCH POSITIONS, EACH OCCUPIED BY AN SA-2 LAUNCHER, AND A REVETTED CENTRAL GUIDANCE AREA CONTAINING A PROBABLE RADAR AND 10 VEHICLES/PIECES OF EQUIPMENT. IMMEDIATELY SOUTH OF THE LAUNCH AREA ARE 5 SA-2 TRANSPORTERS WITHOUT PRIME MOVERS, 6 SETS OF BOGIE WHEELS, AND 2 SA-2 LAUNCHERS. ONE OF THE TRANSPORTERS IS OCCUPIED BY A PROBABLE SA-2 MISSILE WHILE THE OTHERS ARE PROBABLY UNOCCUPIED.

SITE 2 HAS 6 REVETTED LAUNCH POSITIONS, EACH OCCUPIED BY AN SA-2 LAUNCHER, AND A REVETTED CENTRAL GUIDANCE AREA OCCUPIED BY 1 PROBABLE RADAR AND 10 VEHICLES/PIECES OF EQUIPMENT. IMMEDIATELY SOUTH OF THE LAUNCH AREA ARE 6 SA-2 LAUNCHERS AND AT LEAST 7 OTHER VEHICLES/PIECES OF EQUIPMENT. IN THE NW CORNER OF THE SITE 2 LAUNCH AREA ARE 6 PROBABLE SA-2 TRANSPORTERS WITHOUT PRIME MOVERS AND 1 OTHER VEHICLE/PIECE OF EQUIPMENT. ONE OF THE TRANSPORTERS IS OCCUPIED BY A PROBABLE SA-2 MISSILE AND THE OTHERS ARE PROBABLY EMPTY.

SITE 3 HAS 6 UNRETVETTED LAUNCH POSITIONS, EACH OCCUPIED BY AN SA-2 LAUNCHER, AND A REVETTED CENTRAL GUIDANCE AREA OCCUPIED BY A PROBABLE RADAR AND AT LEAST 8 VEHICLES/PIECES OF EQUIPMENT. IMMEDIATELY SW OF THE LAUNCH AREA AT SITE 3 ARE 6 SETS OF BOGIE WHEELS, 6 PROBABLE SA-2 LAUNCHERS, 6 PROBABLE SA-2 TRANSPORTERS WITHOUT PRIME MOVERS, AND AT LEAST 2 OTHER VEHICLES/PIECES OF EQUIPMENT. ONE OF THE PROBABLE SA-2 TRANSPORTERS IS POSSIBLY OCCUPIED AND THE REST ARE

TOP SECRET

TOP SECRET

25X
25X

MISSION 4031, 17-24 AUGUST 1966

PROBABLY EMPTY.

IN SITE 4, 5 OF THE 6 REVETTED POSITIONS ARE IMAGED ON THIS MISSION, 3 CONTAIN PROBABLE SA-2 LAUNCHERS AND 2 DO NOT. THE REVETTED CENTRAL GUIDANCE AREA CONTAINS AT LEAST 7 VEHICLES/PIECES OF EQUIPMENT. ONE OF THE LAUNCH POSITIONS, WITHOUT A LAUNCHER, CONTAINS A POSSIBLE SA-2 ON A DOLLY.

AT SITE 5, NONE OF THE LAUNCH POSITIONS OR MISSILE-RELATED EQUIPMENT IS DISCERNIBLE.

THE UNIDENTIFIED AREA APPROXIMATELY 3.5 NM ESE OF LAUNCH SITE 1 (PREVIOUSLY CALLED AN UNIDENTIFIED POSSIBLE LAUNCH AREA UNDER CONSTRUCTION) IS PROBABLY COMPLETE. NOW COMPLETELY SECURED BY A SINGLE FENCE, THE FACILITY HAS 2 ADJACENT, IDENTICAL HARDSTANDS WITH A LARGE REVETMENT WALL IMMEDIATELY NORTH. NEITHER HARDSTAND IS REVETTED FROM THE OTHER AND THE LARGE REVETMENT HAS EITHER VENTS OR OBSERVATION POSITIONS TO THE REAR OF EACH HARDSTAND. THE AREA ALSO HAS A CIRCULAR HARDSTAND INSIDE A C-SHAPED REVETMENT WHICH IS CONTIGUOUS TO THE REVETMENT WALL, ANOTHER REVETTED HARDSTAND, A PROBABLE BURIED STRUCTURE, A POSSIBLE BURIED TANK, AND AN INTRICATE ROAD PATTERN WITH WIDE-RADIUS TURNS.

(SEE ATTACHMENT)

DALNYAYA CRUISE-MISSILE LAUNCH SITE

UR 4554N 14204E

NO COMOR

THE SITE AT 45-55-00N 142-05-00E CONSISTS OF 2 REVETTED LAUNCH POSITIONS OCCUPIED BY LAUNCHERS. A PROBABLE SHEET BEND RADAR IS IN THE REVETMENT BETWEEN THE LAUNCH POSITIONS AND A PROBABLE CONTROL VAN IS IN THE REVETMENT JUST TO THE NORTH. AN UNIDENTIFIED TOWER-MOUNTED RADAR AND A CANVAS-COVERED MISSILE TRANSPORTER WITH PRIME MOVER ARE LOCATED ON THE ADJACENT LOOP ROAD ALONG WITH SEVERAL OTHER VEHICLES/PIECES OF EQUIPMENT. AN UNCOVERED KENNEL MISSILE IS IMMEDIATELY TO THE SOUTH IN THE MISSILE HOLD AREA. SEVEN BUILDINGS ARE LOCATED ADJACENT TO THE ACCESS ROAD. THE OTHER LAUNCH SITE AT 45-54-04N 142-04-40E IS UNOCCUPIED. NO VEHICLES/EQUIPMENT ARE OBSERVED IN THE MISSILE CHECKOUT AND STORAGE AREA. THE MAIN SUPPORT FACILITY APPROXIMATELY 0.5 NM WEST OF THE

25X

TOP SECRET

25X

TOP SECRET

25X
25X

MISSION 4031, 17-24 AUGUST 1966 []

CHECKOUT AND STORAGE AREA CONTAINS 4 CANVAS-COVERED
MISSILE TRANSPORTERS AND NUMEROUS OTHER VEHICLES/PIECES
OF EQUIPMENT.

(SEE ATTACHMENT)



TOP SECRET

25X
25X

**Air
Facilities**

MISSION 4031, 17-24 AUGUST 1966

AIR FACILITIES

SPASSK-DALNIY AIRFIELD EAST

UR 4437N 13253E

OB -- NONE OBSERVED.

RUNWAY REPAIR AND TAXIWAY EXTENSION CONTINUES.
SOUTHWEST END OF AIRFIELD IS OBSCURED BY CLOUDS.

PETROPAVLOVSK/YELIZOVO AIRFIELD

UR 5310N 15830E

OB -- [] - 4 CAMEL, 1 COOT, 2 CAT/CUB, 2 CRATE AND 9 CAB IN THE MAINTENANCE AREA WEST OF THE NNW END OF THE RUNWAY, 8 BADGER IN THE CENTRAL MAINTENANCE AREA, 5 FAGOT/FRESCO SOUTH OF THE POL STORAGE AREA, 4 FISHPOT, 3 FIREBAR/BREWER AND 2 FAGOT/FRESCO ON THE SOUTHERNMOST APRON, 8 FISHPOT, 6 FIREBAR/BREWER AND 12 FAGOT/FRESCO ON THE SOUTH-CENTRAL APRON, 1 BADGER ON A LINK TAXIWAY, 1 BADGER ON THE PARALLEL TAXIWAY, 5 HOUND AND 2 HARE WEST OF THE SOUTH-CENTRAL APRON, 2 BADGER, 1 BEAGLE, 1 CAT/CUB, 1 CAMP, 1 CRATE, 1 CAB AND 3 HOUND ADJACENT TO THE PARALLEL TAXIWAY, 2 CRATE, 1 CAB, 3 COLT, 3 HOUND AND 12 KENNEL ASM ON THE SE PARKING APRON, AND 2 FISHPOT, 2 FIREBAR/BREWER AND 3 FAGOT/FRESCO EAST OF THE SE PARKING APRON.

[] - 3 BADGER/CAMEL, 1 CAT/CUB, 7 CAB AND 1 POSSIBLE CAB IN THE MAINTENANCE AREA WEST OF THE NNW END OF THE RUNWAY (PARTIAL COVERAGE), 9 BADGER IN THE CENTRAL MAINTENANCE AREA, 7 FAGOT/FRESCO SOUTH OF THE POL STORAGE AREA, 3 FISHPOT, 4 FIREBAR/BREWER AND 1 FAGOT/FRESCO ON THE SOUTHERNMOST APRON, 9 FISHPOT, 5 FIREBAR/BREWER AND 12 FAGOT/FRESCO ON THE SOUTH-CENTRAL APRON, 5 HOUND AND 2 HARE WEST OF THE SOUTH-CENTRAL APRON, 2 BADGER, 2 BEAGLE, 1 CAMP, 1 CRATE, 1 CAB AND 3 HOUND ADJACENT TO THE PARALLEL TAXIWAY, 21 BADGER, 1 CAT/CUB, 1 CRATE, 2 CAB, 3 COLT, 2 HOUND AND 13 KENNEL ASM ON THE SE PARKING APRON, AND 1 FISHPOT, 2 FIREBAR/BREWER AND 4 FAGOT/FRESCO (2 WITHOUT EMPENNAGE) EAST OF THE SE PARKING APRON.

NO NEW CONSTRUCTION OR CHANGES IN FACILITIES OBSERVED.

MISSION 4031, 17-24 AUGUST 1966

AKHTUBINSK/VLADIMIROVKA AIRFIELD

UR 4818N 04613E

NO NEW CONSTRUCTION OR COMPONENTS OR PARTIALLY ASSEMBLED AIRCRAFT OR MISSILES OBSERVED.

[] - 2 IDENTICAL NEW-GENERATION AIRCRAFT (DISSIMILAR TO THOSE OBSERVED AT NOVOSIBIRSK AIRFIELD WEST OR RAMENSKOYE FLIGHT TEST CENTER) ARE LOCATED AT THE AIRFIELD (ONE IN AIRBORNE WEAPONS COMPLEX AND ONE ON PARKING APRON ADJACENT TO THE COMPLEX). DIMENSIONS OF BOTH AIRCRAFT ARE -- WING SPAN [] FUSELAGE LENGTH 70 FT, FUSELAGE DIAMETER [] (IN FRONT OF AIR INTAKES), FUSELAGE DIAMETER, INCLUDING ENGINES, 10 FT, AND TAIL SPAN [] BOTH AIRCRAFT HAVE DELTA WINGS AND 2 INTERNALLY MOUNTED ENGINES.

OB -- 3 BEAR, 7 BLINDER, 18 BADGER, 4 BEAGLE, 1 FIDDLER, 8 FISHPOT (ONE WITHOUT TAIL ASSEMBLY), 3 FITTER, 15 FLASHLIGHT/FIREBAR, 14 FISHBED, 3 FARMER, 7 FAGOT/FRESCO, 3 MANDRAKE, 1 CAMEL, 1 COOKPOT, 1 CAMP, 1 COKE, 6 CRATE, 2 CAB, 2 COLT, AND 4 HOUND ON MAIN PARKING APRONS, 1 BLINDER IN MAINTENANCE AREA, 1 BLINDER TAXIING AT SE END OF 8,250-FT CONCRETE RUNWAY, 3 FITTER, 5 FISHPOT, 3 FLASHLIGHT/FIREBAR, 7 FISHBED, 1 FAGOT/FRESCO, 2 MANDRAKE, AND 1 MAYA IN AIRBORNE WEAPONS COMPLEX, 5 BADGER, 25 BEAGLE, 35 FAGOT, 28 MANDRAKE, AND 1 PROBABLE MAYA ON GRADED-EARTH PARKING APRON SOUTH OF 13,250-FT RUNWAY, 1 BADGER, 2 BULL, 1 BEAGLE, 1 FITTER, 1 FLASHLIGHT/FIREBAR, 1 FARMER, AND 10 FAGOT/FRESCO IN DERELICT AREA, AND 1 BEAGLE AT REAR OF FIRING-IN BUTT.

[] - 1 NEW-GENERATION AIRCRAFT (DESCRIBED ON PASS REMAINS IN AIRBORNE WEAPONS COMPLEX, 3 BEAR, 8 BLINDER, 19 BADGER, 4 BEAGLE, 1 FIDDLER, 10 FISHPOT (1 WITHOUT TAIL ASSEMBLY), 5 FITTER, 15 FIREBAR/BREWER, 1 FLASHLIGHT, 16 FISHBED, 3 FARMER, 6 FAGOT/FRESCO, 3 MANDRAKE, 3 CAMEL, 1 COOKPOT, 1 CAMP, 1 COKE, 7 CRATE, 2 CAB, 2 COLT, 6 HOUND, AND 1 A-FRAME TOW TARGET ON MAIN PARKING APRONS, 1 BLINDER IN MAINTENANCE AREA, 3 FITTER, 5 FISHPOT, 4 FIREBAR/BREWER, 8 FISHBED, 1 FAGOT/FRESCO, 2 MANDRAKE, AND 1 MAYA IN AIRBORNE WEAPONS COMPLEX, 4 BADGER, 25 BEAGLE, 35 FAGOT, 28 MANDRAKE, AND 1 PROBABLE MAYA ON GRADED-EARTH PARKING APRON SOUTH OF 13,250-FT RUNWAY, 1 BADGER, 2 BULL, 1 BEAGLE, 1 FITTER, 1 FLASHLIGHT/FIREBAR, 1 FARMER, AND 12 FAGOT/FRESCO IN DERELICT AREA, AND 1 BEAGLE AT REAR OF FIRING-IN BUTT.

(SEE ATTACHMENT)

25X1

Approved For Release 2005/11/17 : CIA-RDP03-00140R000100010037-1

Approved For Release 2005/11/17 : CIA-RDP03-00140R000100010037-1

TOP SECRET

MISSION 4031, 17-24 AUGUST 1966

NO NEW CONSTRUCTION, CHANGES IN FACILITIES, OR
PREVIOUSLY UNREPORTED FEATURES OBSERVED.

HSIANG-TANG AIRFIELD

CH 2826N 11556E

OB -- 36 FAGOT/FRESCO, 15 COLT, AND 2 MAX/MOOSE.

NO NEW CONSTRUCTION, CHANGES IN FACILITIES, OR
PREVIOUSLY UNREPORTED FEATURES OBSERVED.

HSIN-CHING AIRFIELD

CH 3025N 10351E

OB -- 19 COLT. NO RADAR OBSERVED.

NO NEW CONSTRUCTION OR CHANGES IN FACILITIES OBSERVED.

KUANG-CHOU/PAI-YUN AIRFIELD

CH 2311N 11316E

OB -- [REDACTED] - 1 COOT, 1 CRATE, 1 CAB, AND 7 COLT.

[REDACTED] - 2 CRATE, 1 CAB, AND 7 COLT.

A LARGE TERMINAL BUILDING IS BEING CONSTRUCTED
IMMEDIATELY NW OF THE RUNWAY CENTER AND ADJACENT TO A
LARGE PARKING APRON.

LING-SHUI AIRFIELD

CH 1830N 10959E

OB -- 20 FAGOT/FRESCO (1 WITHOUT EMPENNAGE).

NO NEW CONSTRUCTION, CHANGES IN FACILITIES, OR
PREVIOUSLY UNREPORTED FEATURES OBSERVED.

TOP SECRET

MISSION 4031, 17-24 AUGUST 1966

LIU-CHOU AIRFIELD

CH 2417N 10923E

OB -- 11 PROBABLE MAX/MOOSE.

NO NEW CONSTRUCTION, CHANGES IN FACILITIES, OR
PREVIOUSLY UNREPORTED FEATURES OBSERVED.

MING-CHIANG AIRFIELD NORTH

CH 3232N 11404E

OB -- 40 BAT AND 6 COLT.

NO NEW CONSTRUCTION OR CHANGES IN FACILITIES OBSERVED.

NO ELECTRONICS OR COMMUNICATIONS FACILITIES OBSERVED.

NAN-CHANG AIRFIELD NEW

CH 2838N 11555E

OB -- 37 COLT AND 19 MAX/MOOSE.

NO NEW CONSTRUCTION OR CHANGES IN FACILITIES OBSERVED.

NO ELECTRONICS OR COMMUNICATIONS FACILITIES OBSERVED.

PENG-SHAN AIRFIELD

CH 3015N 10351E

OB -- 13 SMALL STRAIGHT-WING. RUNWAY APPEARS
SERVICEABLE AND OPERATIONAL. NO RADAR OR RADIO
FACILITIES OBSERVED.

NO NEW CONSTRUCTION, CHANGES IN FACILITIES, OR
PREVIOUSLY UNREPORTED FEATURES OBSERVED.

SHIH-CHIA-CHUANG AIRFIELD

CH 3805N 11425E

OB -- 49 FAGOT/FRESCO, 1 CRATE, 1 COLT, 2 MAX/MOOSE,
AND 2 PROBABLE MAX/MOOSE FUSELAGES.

TOP SECRET

MISSION 4031, 17-24 AUGUST 1966

NO NEW CONSTRUCTION OR CHANGES IN FACILITIES OBSERVED.

NO ELECTRONICS OR COMMUNICATIONS FACILITIES OBSERVED.

TAI-YUAN AIRFIELD NEW

CH 3749N 11233E

OB -- 1 FAGOT/FRESCO AND 1 COLT.

NO NEW CONSTRUCTION, CHANGES IN FACILITIES, OR
PREVIOUSLY UNREPORTED FEATURES OBSERVED.

AN-KANG AIRFIELD

CH 3242N 10856E

OB -- NONE OBSERVED.

NO NEW CONSTRUCTION, CHANGES IN FACILITIES, OR
PREVIOUSLY UNREPORTED FEATURES OBSERVED.

NAN-NING AIRFIELD SOUTH

CH 2236N 10810E

OB -- 3 FISHBED, 21 FARMER, 1 FAGOT/FRESCO, AND 1 CAB.

NO NEW CONSTRUCTION, CHANGES IN FACILITIES, OR
PREVIOUSLY UNREPORTED FEATURES OBSERVED.

HU-HSIEN AIRFIELD

CH 3409N 10836E

OB -- 2 CAB.

ONLY THE EXTREME NE END OF THE RUNWAY AND PARKING APRON
IS DISCERNIBLE.

NO NEW CONSTRUCTION, CHANGES IN FACILITIES, OR
PREVIOUSLY UNREPORTED FEATURES OBSERVED.

TOP SECRET

TOP SECRET

MISSION 4031, 17-24 AUGUST 1966

HSIN-HSIANG AIRFIELD

CH 3518N 11350E

OB -- 2 PROBABLE COLT AND 28 HOUND.

NO NEW CONSTRUCTION, CHANGES IN FACILITIES, OR
PREVIOUSLY UNREPORTED FEATURES OBSERVED.

YEN-LIANG AIRFIELD

CH 3439N 10916E

OB -- 1 BEAGLE, 6 FARMER, 3 FRESCO, 1 CAB, 1 CAB
FUSELAGE, 5 COLT, 1 COLT FUSELAGE, AND 3 MAX/MOOSE.

CONSTRUCTION CONTINUES ON RUNWAY EXTENSION, PARALLEL
TAXIWAY, ALERT APRON, PARKING APRONS, AND TAXIWAYS.

HSU-CHANG AIRFIELD

CH 3402N 11343E

OB -- 1 CAB AND 23 MAX/MOOSE.

NO NEW CONSTRUCTION, CHANGES IN FACILITIES, OR
PREVIOUSLY UNREPORTED FEATURES OBSERVED.

PING-YUAN-CHIEH AIRFIELD

CH 2342N 10350E

OB -- NONE OBSERVED.

CONSTRUCTION ON DISPERSAL AND SUPPORT AREA IS NEARING
COMPLETION.

LAN-CHO-WAN-TZU AIRFIELD

CH 4357N 08705E

-- THE CONCRETE RUNWAY IS BEING EXTENDED AT THE NW
END FROM 8,790 FT TO 10,550 FT. A PARALLEL TAXIWAY, 2
END-CONNECTING LINKS, 3 CROSSOVER LINKS, 1 ALERT APRON,
AND 3 LARGE PARKING APRONS ARE IN VARIOUS STAGES OF
CONSTRUCTION.

TOP SECRET

TOP SECRET

MISSION 4031, 17-24 AUGUST 1966

OB -- NONE OBSERVED.

HA-MI AIRFIELD 2

CH 4251N 09338E

IDENTIFICATION ONLY.

CHIU-HO-SHIH AIRFIELD

CH 4210N 08712E

OB -- NONE OBSERVED.

CONSTRUCTION APPEARS TO BE COMPLETE ON PARALLEL TAXIWAY AND PARKING APRONS. CONSTRUCTION CONTINUES ON TAXIWAY EXTENDING NW OF AIRFIELD. A PROBABLE HANGAR AND ASSOCIATED BUILDING STRUCTURES ARE UNDER CONSTRUCTION AT THE TERMINUS OF THIS TAXIWAY. A NEW TAXIWAY IS UNDER CONSTRUCTION AND EXTENDS NE FROM THE AIRFIELD. UNIDENTIFIED GRADING ACTIVITY IS LOCATED SOUTH OF THE SMALL APRON AT THE WNW END OF THE RUNWAY.

HSU-PU AIRFIELD

CH 2756N 11040E

OB -- NONE OBSERVED.

A RUNWAY, PARALLEL TAXIWAY, 2 CROSSOVER LINKS, AND 3 PARKING APRONS (2 OF WHICH MAY ALSO BE USED AS ALERT APRONS AND END-CONNECTING LINKS) ARE ALL UNDER CONSTRUCTION.

TOP SECRET

**Nuclear
Energy**

25X2

Approved For Release 2005/11/17 : CIA-RDP03-00140R000100010037-1

Next 6 Page(s) In Document Exempt

Approved For Release 2005/11/17 : CIA-RDP03-00140R000100010037-1

**Naval
Activity/
Ports**

MISSION 4031, 17-24 AUGUST 1966

NAVAL ACTIVITY/PORTS

CHING-TAO SUBMARINE BASE

CH 3604N 12019E

OB -- SUBMARINE BASE -- 1 R-CLASS SS, 3 W-CLASS SS, 1 PROBABLE S-1-CLASS OSS, 1 PROBABLE T-43-CLASS AG, 1 NEW CLASS LST, 1 LSIL/LSSL-CLASS LSIL, AND 3 SMALL CRAFT. SURFACE SHIP BERTHING AREA -- 1 GORDYY-CLASS ODD, 1 KRONSTADT-CLASS PC, 2 SHANGHAI-CLASS PTF, 2 NEW CLASS LST, 1 LST-1-CLASS LST, 2 LSIL/LSSL-CLASS LSIL, 1 AKL (SIMILAR TO HO-PING 59 THROUGH 63 CLASS), 1 SMALLER AKL, 1 PROBABLE AO, 2 AO OF A CLASS DISTINGUISHED BY A CATWALK WHICH JOGS NEAR THE FORECASTLE, 5 AT, AT LEAST 5 YAGT, 2 POSSIBLE COMBATANTS, AND SEVERAL SMALL CRAFT.

VESSELS -- IN COMMERCIAL PORT -- 7 FREIGHTER, 3 TANKERS, 3 FUEL BARGES, AND NUMEROUS SMALL CRAFT.

NO NEW CONSTRUCTION, CHANGES IN FACILITIES, OR PREVIOUSLY UNREPORTED FEATURES OBSERVED.

(SEE ATTACHMENTS)

BUKHTA BECHEVINSKAYA PORT FACILITY

UR 5316N 15946E

OB -- 1 PROBABLE W-CLASS TWIN CYLINDER SSG, 3 W-CLASS SS, 1 LAMA-CLASS AEM AT ANCHOR, 1 DON-CLASS AS (WITH HELICOPTER PLATFORM AFT) AT PIER, 1 OSKOL-CLASS ASL AT ANCHOR, AND 7 SERVICE CRAFT (4 UNDERWAY).

ONE-HALF OF THE NW SHORE OF BUKHTA BECHEVINSKAYA IS BEING DEVELOPED. FACILITIES INCLUDE 4 BARRACKS, 2 ADMINISTRATION BUILDINGS, 26 STORAGE/SUPPORT BUILDINGS, 3 PIERS, 2 PIER APPROACHES, 6 UNDERGROUND ENTRANCES, 4 HORIZONTAL POL TANKS, 3 PARTIALLY BURIED POL TANKS, A MOTOR POOL, A DIESEL POWERPLANT, A SECURED COMMUNICATIONS FACILITY, 3 SHOP-TYPE BUILDINGS, AND 4 BUILDINGS UNDER CONSTRUCTION.

KHABAROVSK SHIPYARD USSURI SOUTH

UR 4824N 13506E

IDENTIFICATION ONLY.

K1

Approved For Release 2005/04/14 : CIA-RDP03-00140R000100010037-1

~~TOP SECRET~~

25X
25X

MISSION 4031, 17-24 AUGUST 1966

K1

CHING-TAO MOTOR TORPEDO BOAT BASE

CH 3603N 12019E NO COMOR

OB -- 1 OSA-CLASS PTFG, 1 KOMAR-CLASS PTG, 13 P-6-CLASS
PT (4 ON WAYS), AND 8 PROBABLE YP (2 ON WAYS).

(SEE ATTACHMENT)

K1

**Electronics/
Communications**

MISSION 4031, 17-24 AUGUST 1966

ELECTRONICS/COMMUNICATIONS 25X

SKRUNDA DUAL HEN HOUSE

UR 5643N 02157E []

NO NEW CONSTRUCTION, CHANGES IN FACILITIES, OR
PREVIOUSLY UNREPORTED FEATURES OBSERVED.

K1 []
ULYANOVSK TALL KING-AIR WARNING RADAR FAC UR 5421N 04819E BONUS 1

3 NM NORTH OF ULYANOVSK.
SECURED FACILITY CONSISTS OF 1 TALL KING ANTENNA, 1
ANTENNA BUILDING, 1 SUPPORT BUILDING, 1 GENERATOR
BUILDING, AND 1 PROBABLE HEIGHT FINDER RADAR.

AN AIR WARNING RADAR SITE IS 0.5 NM SOUTH AND CONSISTS
OF 4 RADAR MOUNDS (3 OCCUPIED), 5 EQUIPMENT VANS, AND
AT LEAST 4 SUPPORT BUILDINGS.

K1 []

**Military
Activity**

MISSION 4031, 17-24 AUGUST 1966

MILITARY ACTIVITY

CHAO-AN BARRACKS AND STORAGE AREA

CH 2342N 11636E

IDENTIFICATION ONLY.

CHU-CHING MILITARY AREA

CH 2531N 10347E

NO NEW CONSTRUCTION, CHANGES IN FACILITIES, OR
PREVIOUSLY UNREPORTED FEATURES OBSERVED.

NO VEHICLES, WEAPONS, OR EQUIPMENT OBSERVED.

NO ELECTRONICS OR COMMUNICATIONS FACILITIES OBSERVED.

CHU-HSIEN BARRACKS AND HQ 180TH INF DIV

CH 3220N 11818E

OB -- 6 POSSIBLE AAA PIECES AND 2 CARGO TRUCKS.

NO NEW CONSTRUCTION, CHANGES IN FACILITIES, OR
PREVIOUSLY UNREPORTED FEATURES OBSERVED.

SHAN-TOU ARMY BARRACKS LIEN-TANG

CH 2327N 11635E

IDENTIFICATION ONLY.

SHANG-JAO MILITARY COMPLEX

CH 2829N 11755E

NO SIGNIFICANT CHANGE OBSERVED.

NO INDICATION OF MILITARY ACTIVITY OBSERVED.

~~TOP SECRET~~

MISSION 4031, 17-24 AUGUST 1966

ZILINA ARMY BARRACKS SOUTHWEST

CZ 4912N 01843E

NO TANKS OBSERVED.

AREA APPEARS OCCUPIED AND ALL PORTIONS APPEAR ACTIVE.

GYONGYOS ARMY BARRACKS 1

HU 4746N 01955E

INSTALLATION AT REFERENCED COORDINATES IS CIVILIAN HOUSING.

HRUBIESZOW ARMY BARRACKS 1

PO 5049N 02353E

OB -- 6 CARGO TRUCKS AND 25 OTHER VEHICLES.

~~TOP SECRET~~

TOP SECRET

MISSION 4031, 17-24 AUGUST 1966

AREA APPEARS OCCUPIED AND ALL PORTIONS APPEAR ACTIVE.

KOLUSZKI ORDNANCE AND AMMUNITION DEPOT SE PO 5142N 01955E

NO TANKS OBSERVED.

AREA APPEARS OCCUPIED AND ALL PORTIONS APPEAR ACTIVE.

LOWICZ ARMY BARRACKS 1

PO 5206N 01956E

NO TANKS OBSERVED.

AREA APPEARS OCCUPIED AND ALL PORTIONS APPEAR ACTIVE.

TARNOWSKIE GORY ARMY BARRACKS UHLANEN 1

PO 5027N 01850E

NO TANKS OBSERVED.

AREA APPEARS OCCUPIED AND ALL PORTIONS APPEAR ACTIVE.

WROCLAW ARMY BARRACKS 1 NORTHWEST

PO 5108N 01658E

INSTALLATION CONTAINS 5 ADMINISTRATION BUILDINGS/BARRACKS, 1 PROBABLE QUARTERS BUILDING, 12 STORAGE BUILDINGS, 1 LONG VEHICLE STORAGE/MAINTENANCE BUILDING, AND 1 VEHICLE MAINTENANCE BUILDING.

A SEPARATE SECURED STORAGE AREA IMMEDIATELY NORTH CONTAINS 3 STORAGE BUILDINGS. A TRAINING AREA IMMEDIATELY NORTH OF INSTALLATION CONTAINS MUCH SCARRING AND TRENCHING.

OB -- 4 CARGO TRUCKS AND 2 VEHICLES.

TOP SECRET

MISSION 4031, 17-24 AUGUST 1966

WROCLAW ARMY BARRACKS 3 KARLOWICE

PO 5108N 01704E

LOCATED ON NE EDGE OF WROCLAW.
INSTALLATION CONTAINS 10 BARRACKS, 1 LARGE I-SHAPED
HEADQUARTERS BUILDING, 2 OTHER ADMINISTRATION
BUILDINGS, 18 STORAGE BUILDINGS, AND 10 SUPPORT
BUILDINGS.

A TRAINING AREA IMMEDIATELY NORTH CONTAINS 1 ATHLETIC
FIELD, 1 OBSTACLE COURSE, AND MUCH SCARRING AND
TRENCHING.

OB -- 25 CARGO TRUCKS.

WROCLAW ARMY BARRACKS 5

PO 5105N 01700E

LOCATED ON SW EDGE OF WROCLAW.
INSTALLATION CONTAINS 9 BARRACKS, 1 E-SHAPED
ADMINISTRATION BUILDING, 1 LARGE, DOUBLE MONITOR-ROOFED
MAINTENANCE BUILDING, 1 MONITOR-ROOFED MAINTENANCE
BUILDING, 8 STORAGE BUILDINGS, 4 VEHICLE STORAGE
BUILDINGS, 1 POWERPLANT, AND 10 SUPPORT BUILDINGS.

OB -- 90 CARGO TRUCKS AND 105 VEHICLES/PIECES OF
EQUIPMENT.

WROCLAW ARMY BKS 7 ROSENTHAL

PO 5108N 01701E

LOCATED ON NW EDGE OF WROCLAW.
INSTALLATION CONTAINS 12 BARRACKS, 1 ADMINISTRATION
BUILDING, 2 MONITOR-ROOFED MAINTENANCE BUILDINGS, 8
STORAGE BUILDINGS, 9 VEHICLE STORAGE/MAINTENANCE
BUILDINGS, AND 7 SUPPORT BUILDINGS.

TRAINING AREA IMMEDIATELY WEST OF INSTALLATION CONTAINS
1 ATHLETIC FIELD, 1 CLOSED LOOP DRIVER-TRAINING COURSE,
AND 1 SMALL-ARMS FIRING RANGE.

OB -- 25 TANKS/SP GUNS, 15 CARGO TRUCKS, AND 12
VEHICLES/PIECES OF EQUIPMENT.

K1

Approved For Release 005005 TOP SECRET CIA-RDP03-00140R000100010037-1

MISSION 4031, 17-24 AUGUST 1966

25X

25X

25X

ALATYR ORDNANCE DEPOT

UR 5450N 04633E

AREA IS NOT MILITARY AND APPEARS TO BE ASSOCIATED WITH
RAILROAD REPAIR FACILITY. NO EXPLOSIVE STORAGE
OBSERVED WITHIN A 5-NM RADIUS OF ALATYR.

K1

BREST ARMY BARRACKS PUGACHEVO

UR 5204N 02345E

OB -- 10 TANKS, 3 POSSIBLE TANKS/ASSAULT GUNS, AND
APPROXIMATELY 10 OTHER VEHICLES/PIECES OF EQUIPMENT.

NO NEW CONSTRUCTION, CHANGES IN FACILITIES, OR
PREVIOUSLY UNREPORTED FEATURES OBSERVED.

K1

25X

K1

KAUNAS ARMY BARRACKS SOUTHEAST AL 2

UR 5451N 02357E

2 NM SE OF KAUNAS.
INSTALLATION CONTAINS 10 MULTISTORY BARRACKS, 9

25X

25X

MISSION 4031, 17-24 AUGUST 1966

SINGLE-STORY BARRACKS, 3 ADMINISTRATION BUILDINGS, 39 STORAGE BUILDINGS, 3 SUPPORT BUILDINGS, 22 VEHICLE MAINTENANCE/STORAGE BUILDINGS, A SECURED POL STORAGE AREA WITH 2 BUILDINGS AND 2 POL TANKS, 3 POSSIBLE BUNKERED AMMUNITION STORAGE BUILDINGS, 2 DRIVER-TRAINING AREAS, AND 2 SMALL-ARMS FIRING RANGES. A SMALL TRAINING AREA CONTAINING PERSONNEL TRENCHES AND GROUND SCARRING IS LOCATED SE.

OB -- 100 CARGO TRUCKS AND APPROXIMATELY 165 OTHER VEHICLES.

AREA APPEARS OCCUPIED AND ALL PORTIONS APPEAR ACTIVE.

KAUNAS MILITARY BARRACKS PAMOTERYS UR 5445N 02355E

NO NEW CONSTRUCTION, CHANGES IN FACILITIES, OR PREVIOUSLY UNREPORTED FEATURES OBSERVED.

NO VEHICLES, WEAPONS, OR EQUIPMENT OBSERVED.

KECHVELLI BARRACKS AND STORAGE AREA UR 4120N 04515E

OB -- 128 CARGO TRUCKS, 16 POSSIBLE CARGO TRAILERS AND 4 OTHER VEHICLES/PIECES OF EQUIPMENT.

FACILITIES INCLUDE 4 LARGE AND 9 SMALL BARRACKS, 13 STORAGE BUILDINGS (4 EARTH COVERED), 3 VEHICLE SHEDS, 10 SUPPORT BUILDINGS, AND 11 SMALL TENTS. A STORAGE AREA 0.5 NM SE CONTAINS 14 STORAGE BUILDINGS, 2 POSSIBLE VEHICLE SHEDS, AND 1 SUPPORT BUILDING IN A DOUBLE-SECURED AREA.

LVOV ARMY BARRACKS AND MIL POLITICAL OCS UR 4950N 02401E

OB -- APPROXIMATELY 150 TRUCKS AND 10 CARGO TRAILERS.

NO NEW CONSTRUCTION, CHANGES IN FACILITIES, OR PREVIOUSLY UNREPORTED FEATURES OBSERVED.

25X

Approved For Release TOP SECRET CIA-RDP03-00140R000100010037-1

25X

MISSION 4031, 17-24 AUGUST 1966

25X

LVOV ARMY BARRACKS AL 7

UR 4950N 02400E

OB -- 4 CARGO TRUCKS AND 2 BUSES.

AREA APPEARS OCCUPIED AND ALL PORTIONS APPEAR ACTIVE.

LVOV ARMY BARRACKS NORTHWEST AL 11

UR 4954N 02357E

NO MILITARY ACTIVITY OBSERVED AT THESE COORDINATES.
AREA CONSISTS OF CIVILIAN HOUSING AND A FEW POSSIBLE
GOVERNMENTAL ADMINISTRATION BUILDINGS.

LVOV ARMY BARRACKS AL 10

UR 4950N 02404E

OB -- APPROXIMATELY 250 VEHICLES/PIECES OF EQUIPMENT.

NO NEW CONSTRUCTION, CHANGES IN FACILITIES, OR
PREVIOUSLY UNREPORTED FEATURES OBSERVED.

LVOV ARMY BARRACKS AL 3

UR 4949N 02400E

OB -- 3 CARGO TRUCKS.

AREA APPEARS OCCUPIED AND ALL PORTIONS APPEAR ACTIVE.

LVOV ARMY BARRACKS SOUTH-SOUTHWEST AL 4

UR 4949N 02400E

OB -- APPROXIMATELY 30 TRUCKS.

AREA APPEARS OCCUPIED AND ALL PORTIONS APPEAR ACTIVE.

Approved For Release TOP SECRET CIA-RDP03-00140R000100010037-1

25X

25X

TOP SECRET

MISSION 4031, 17-24 AUGUST 1966

LVOV POSS MILITARY STORAGE INSTALLATION UR 4947N 02401E

OB -- APPROXIMATELY 50 POSSIBLE TRACKED VEHICLES.

NO NEW CONSTRUCTION, CHANGES IN FACILITIES, OR
PREVIOUSLY UNREPORTED FEATURES OBSERVED.

NALCHIK ARMY BARRACKS NORTHEAST AL 1 UR 4329N 04337E

OB -- AT LEAST 45 VEHICLES/PIECES OF EQUIPMENT.

AREA APPEARS OCCUPIED AND ALL PORTIONS APPEAR ACTIVE.

NEMAN ARMY BARRACKS AL 6 UR 5502N 02159E

A SMALL CIVILIAN INDUSTRY OCCUPIES THE TARGET AREA.

NEMAN EXPLOSIVES STORAGE DEPOT UR 5500N 02202E

2 NM S OF NEMAN.
INSTALLATION CONTAINS 12 STORAGE BUILDINGS AND 2 SMALL
REVERTED STORAGE BUILDINGS.

OB -- 7 CARGO TRUCKS.

OSH ARMY BARRACKS WEST UR 4031N 07245E

OB -- 32 POSSIBLE TRUCK-MOUNTED ROCKET LAUNCHERS, 4
TRACKED PRIME MOVERS, 90 CARGO TRUCKS, 15 VAN TRUCKS,
AND 15 OTHER VEHICLES/PIECES OF EQUIPMENT.

NO NEW CONSTRUCTION, CHANGES IN FACILITIES, OR
PREVIOUSLY UNREPORTED FEATURES OBSERVED.

TOP SECRET

MISSION 4031, 17-24 AUGUST 1966

PANEVEZYS MUNITIONS FACTORY AND STORAGE UR 5545N 02419E

OB -- 1 CARGO TRUCK AND 30 OTHER VEHICLES.

NO NEW CONSTRUCTION, CHANGES IN FACILITIES, OR
PREVIOUSLY UNREPORTED FEATURES OBSERVED.

PLUNGE ARMY BARRACKS AL 1

UR 5555N 02151E

NORTH EDGE OF PLUNGE.
DOUBLE-SECURED INSTALLATION CONTAINS 1 E-SHAPED
BARRACKS, 1 C-SHAPED BARRACKS, 1 E-SHAPED PROBABLE
ADMINISTRATION BUILDING, 6 VEHICLE STORAGE BUILDINGS, 3
LARGE DRIVE-THROUGH BUILDINGS, 1 LARGE DRIVE-IN
BUILDING WITH A HIGH BAY SECTION, 12 SUPPORT BUILDINGS,
7 STORAGE BUILDINGS, AND A POSSIBLY ABANDONED
SMALL-ARMS FIRING RANGE.

OB -- 3 CARGO TRUCKS.

PRIENAI ARMY BARRACKS AL 1

UR 5438N 02357E

0.8 NM NE OF PRIENAI.
SECURED INSTALLATION CONTAINS 3 MULTISTORY BARRACKS, 2
SINGLE-STORY BARRACKS, A MULTISTORY ADMINISTRATION
BUILDING, 9 SINGLE-STORY STORAGE BUILDINGS, 4 SUPPORT
BUILDINGS, 3 VEHICLE MAINTENANCE/STORAGE BUILDINGS, A
DRIVER-TRAINING COURSE, AN ATHLETIC FIELD, AND 2
SMALL-ARMS RANGES. APPROXIMATELY 26 PROBABLE TENTS ARE
LOCATED NW OF THE DRIVER-TRAINING COURSE.

OB -- 4 PROBABLE VEHICLE^S.

NO NEW CONSTRUCTION, CHANGES IN FACILITIES, OR
PREVIOUSLY UNREPORTED FEATURES OBSERVED.

JASZBERENY ARMY BARRACKS 21

HU 4730N 01955E

OB -- 10 VEHICLES.

TOP SECRET

MISSION 4031, 17-24 AUGUST 1966

AREA APPEARS OCCUPIED AND ALL PORTIONS APPEAR ACTIVE.

BAN LOT/NA SAN MILITARY COMPLEX

VN 2113N 10402E

NUMEROUS BOMB CRATERS OBSERVED THROUGHOUT THE AREA. HOWEVER, SMALL SCALE AND POOR INTERPRETABILITY PRECLUDE BOMB DAMAGE ASSESSMENT. NO INDICATION OF TROOP OR SUPPLY BUILDUP OBSERVED.

NO VEHICLES, WEAPONS, OR EQUIPMENT OBSERVED.

THAN UYEN ARMY BARRACKS

VN 2200N 10355E

NO MILITARY FACILITY DISCERNIBLE AT REFERENCED COORDINATES. SCATTERED FOXHOLES, SHORT SEGMENTS OF TRENCHING AND WEAPONS EMPLACEMENTS ARE OBSERVED THROUGHOUT THE AREA.

TOP SECRET

TOP SECRET

MISSION 4031, 17-24 AUGUST 1966

THAN UYEN MILITARY AREA EAST

VN 2205N 10352E

APPROXIMATELY 1 NM NW OF THAN UYEN.
AREA CONTAINS APPROXIMATELY 15 BUILDINGS WHICH APPEAR
TO BE ASSOCIATED WITH AGRICULTURAL ACTIVITY. NO
VEHICLES, WEAPONS, OR EQUIPMENT OBSERVED. NO
INDICATION OF TROOP OR SUPPLY BUILDUP DISCERNIBLE.

HO-KOU ARMY BARRACKS NORTH

CH 2232N 10357E

NO NEW CONSTRUCTION, CHANGES IN FACILITIES, OR
PREVIOUSLY UNREPORTED FEATURES OBSERVED.

NO VEHICLES, WEAPONS, OR EQUIPMENT OBSERVED.

NO ELECTRONICS OR COMMUNICATIONS FACILITIES OBSERVED.

CHING-TAO BARRACKS AREAS

CH 3608N 12029E

NO NEW CONSTRUCTION, CHANGES IN FACILITIES, OR
PREVIOUSLY UNREPORTED FEATURES OBSERVED.

NO VEHICLES, WEAPONS, OR EQUIPMENT OBSERVED.

LOP NOR AREA 3

CH 4003N 09024E

NO ACTIVITY OBSERVED IN CLOUD-FREE AREAS. THE
REFERENCED COORDINATES FALL ON THE SOUTHERN PART OF LOP
NOR (LAKE).

HA NOI/LAO CAI RR SEGMENT 1

VN 2220N 10410E

IDENTIFICATION ONLY.

10-NM SEGMENT COVERED FROM 22-29N 103-52E (LAO
CAI) TO 22-25N 104-04E. ONE PROBABLE LOCOMOTIVE AND

TOP SECRET

TOP SECRET

MISSION 4031, 17-24 AUGUST 1966

APPROXIMATELY 40 RAIL CARS OBSERVED IN RAIL YARD AT 22-29N 103-58E AND 14 RAIL CARS OBSERVED ON SIDING AT 22-25N 104-03E. RAIL LINE APPEARS SERVICEABLE. NO NEW CONSTRUCTION OR NEW MILITARY ACTIVITY OBSERVED.

KLINTSY MILITARY INSTALLATION

UR 5244N 03213E BONUS 1

ON SW EDGE OF KLINTSY. FACILITIES CONSIST OF 3 BARRACKS, 1 ADMINISTRATION BUILDING, 1 DRIVE-THROUGH SERVICE BUILDING, 5 VEHICLE SHEDS, 4 PROBABLE STORAGE BUILDINGS, 1 VEHICLE MAINTENANCE BUILDING, 8 SUPPORT BUILDINGS, 10 SMALL ASSOCIATED BUILDINGS, A FUEL STORAGE AREA UNDER CONSTRUCTION, AND A WATER TOWER.

OB -- 12 SCUD RESUPPLY TRANSPORT TRAILERS WITH PRIME MOVERS, 4 PROBABLE VAN TRUCKS, AND 6 LOWBED TRAILERS.

(SEE ATTACHMENT)

TOP SECRET

Attachments

25X1

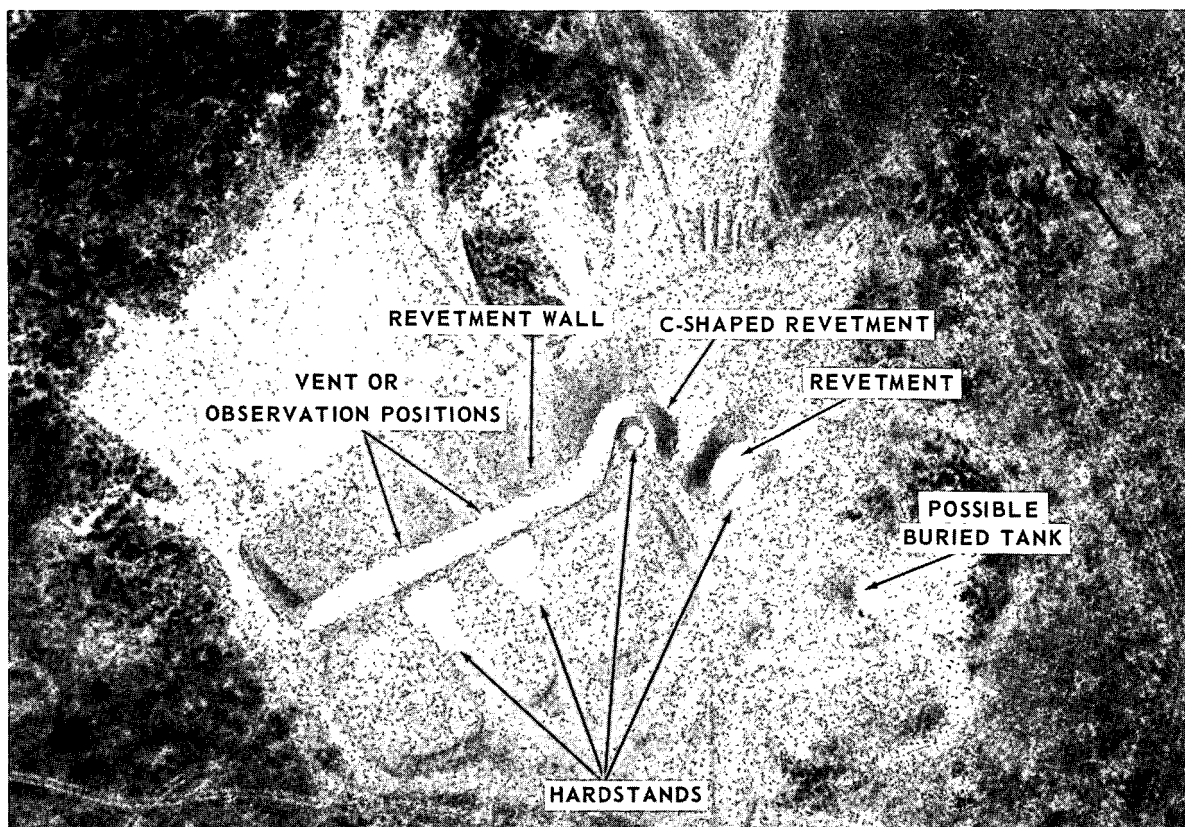
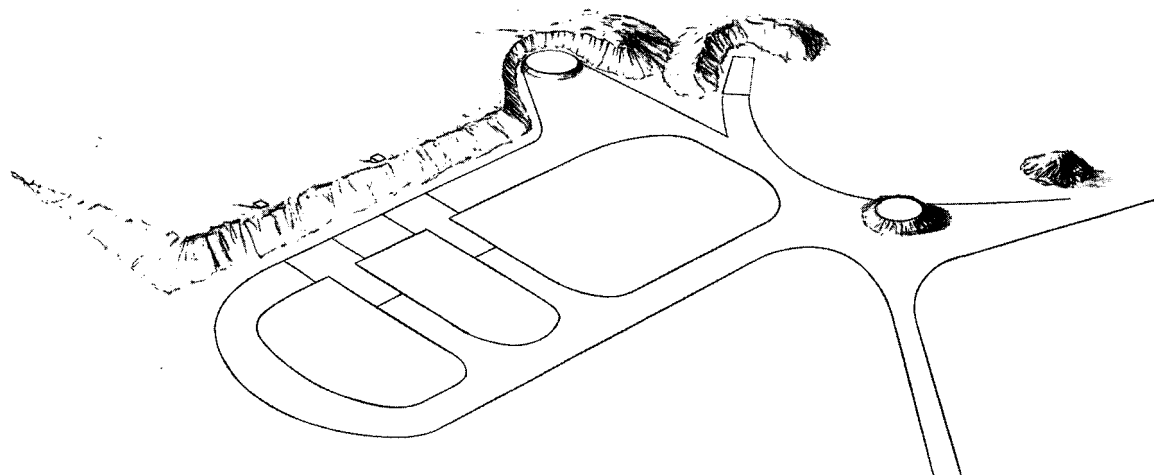
Approved For Release 2005/11/17 : CIA-RDP03-00140R000100010037-1

Approved For Release 2005/11/17 : CIA-RDP03-00140R000100010037-1

TOP SECRET

MISSION 4031, 17-24 AUGUST 1966

ATTACHMENT 2

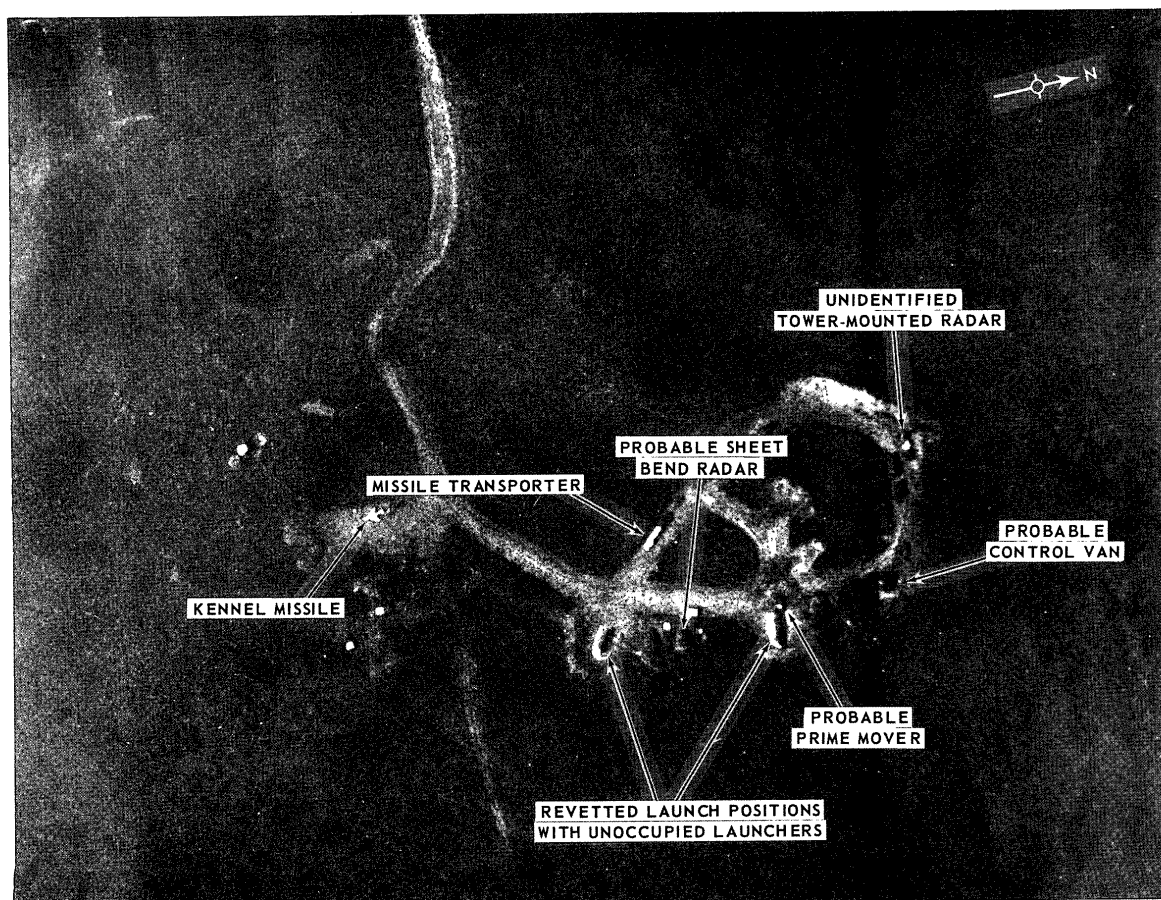


UNIDENTIFIED AREA, SAM TRAINING CENTER, KORDON, USSR

NPIC L-1684 (8/66)

TOP SECRET

25X



NPIC L-1685 (8/66)

CRUISE-MISSILE LAUNCH SITE, DALNAYA, USSR

TOP SECRET

TOP SECRET

MISSION 4031, 17-24 AUGUST 1966

ATTACHMENT 3

TOP SECRET

MISSION 4031, 17-24 AUGUST 1966

ATTACHMENT 4



UNIDENTIFIED AIRCRAFT, AKHTUBINSK/VLADIMIROVKA AIRFIELD, USSR

NPIC L-1686 (8/66)

TOP SECRET

25X2

Approved For Release 2005/11/17 : CIA-RDP03-00140R000100010037-1

Next 4 Page(s) In Document Exempt

Approved For Release 2005/11/17 : CIA-RDP03-00140R000100010037-1

MISSION 4031, 17-24 AUGUST 1966

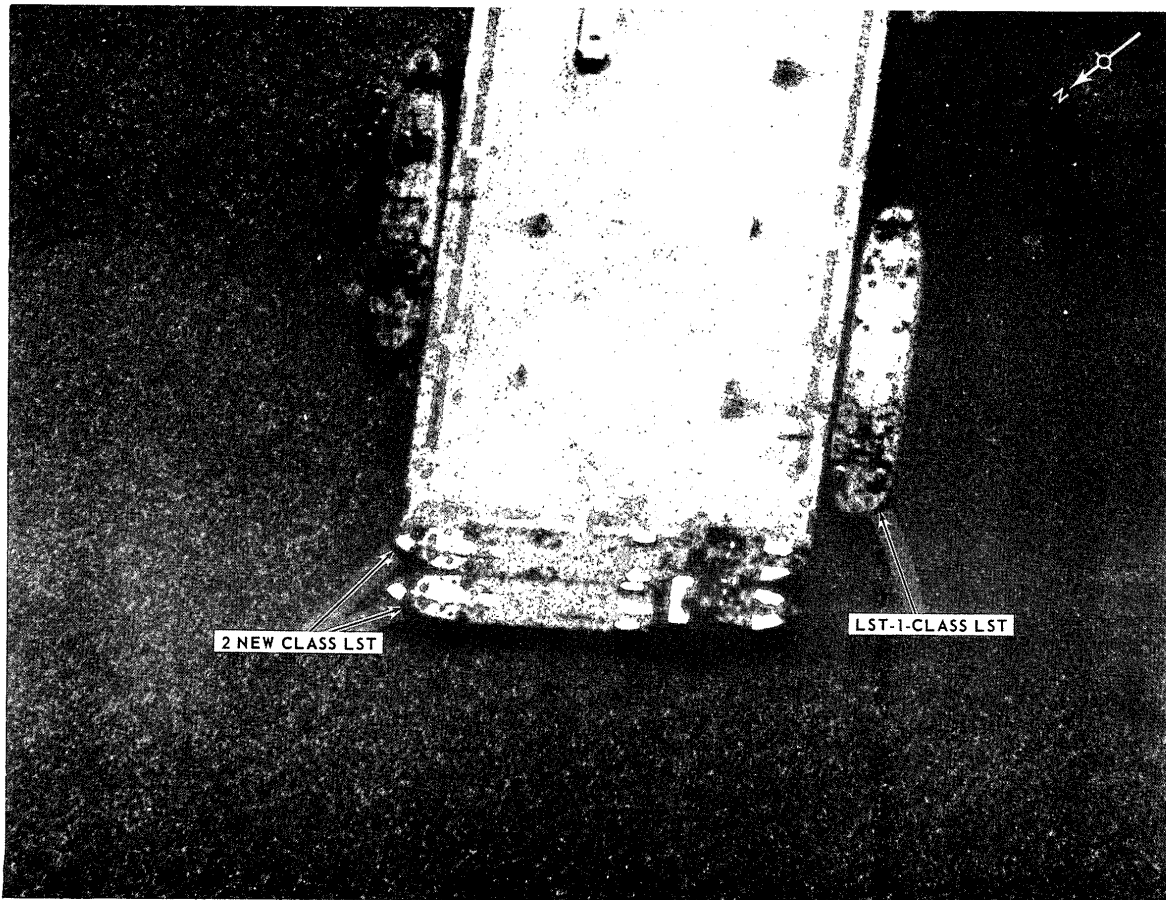
ATTACHMENT 10



SUBMARINE BASE, CHING-TAO, CHINA

NPIC L-1692 (8/66)

25X



NPIC L-1593 (8/66)

SUBMARINE BASE, CHING-TAO, CHINA

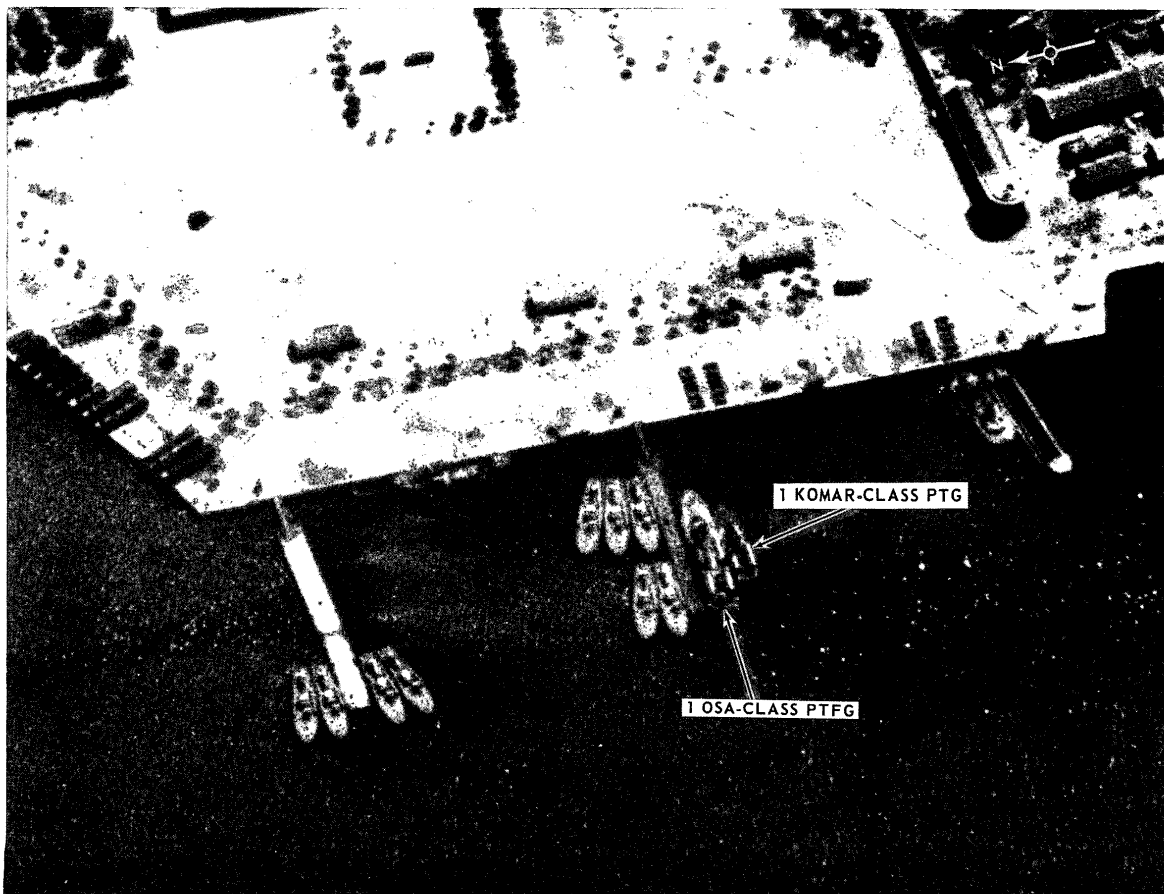
TOP SECRET

TOP SECRET

MISSION 4031, 17-24 AUGUST 1966

ATTACHMENT 11

25X



NPIC L-1094 (8/66)

MOTOR TORPEDO BOAT BASE, CHING-TAO, CHINA (NO COMOR).

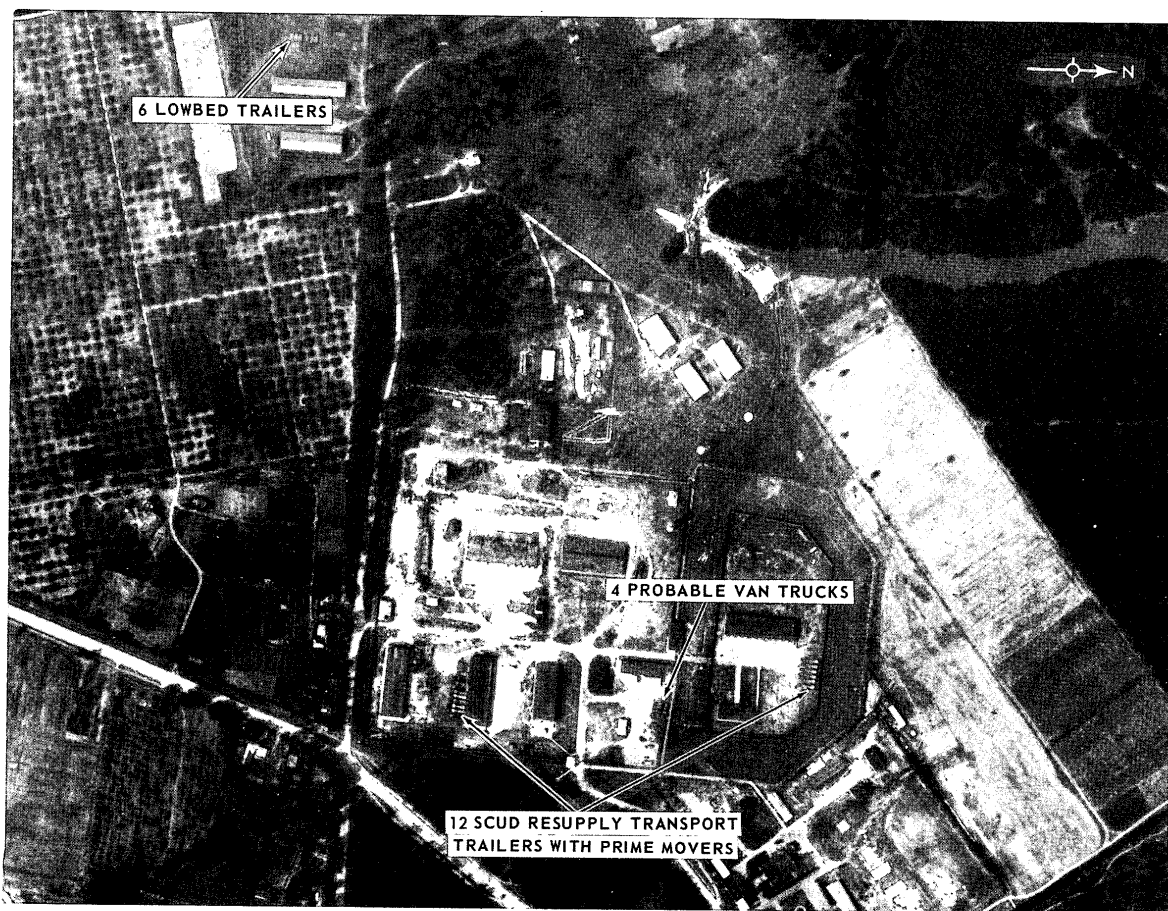
TOP SECRET
MISSION 4031, 17-24 AUGUST 1966

ATTACHMENT 12

TOP SECRET

TOP SECRET

25X



NPIC L-1695 (8/66)

MILITARY INSTALLATION, KLINTSY, USSR (NO COMOR)

TOP SECRET

TOP SECRET

MISSION 4031, 17-24 AUGUST 1966

ATTACHMENT 13

Approved For Release 2005/11/07 : CIA-RDP03-00140R000100010037-1

TOP SECRET

Approved For Release 2005/11/07 : CIA-RDP03-00140R000100010037-1

TOP SECRET