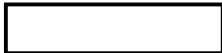


TOP SECRET

Copy **167**
49 Pages



25X1

February 1965

PHOTOGRAPHIC INTERPRETATION REPORT

**OAK PART IV
MISSION 4015
24-27 JANUARY 1965**



CIA

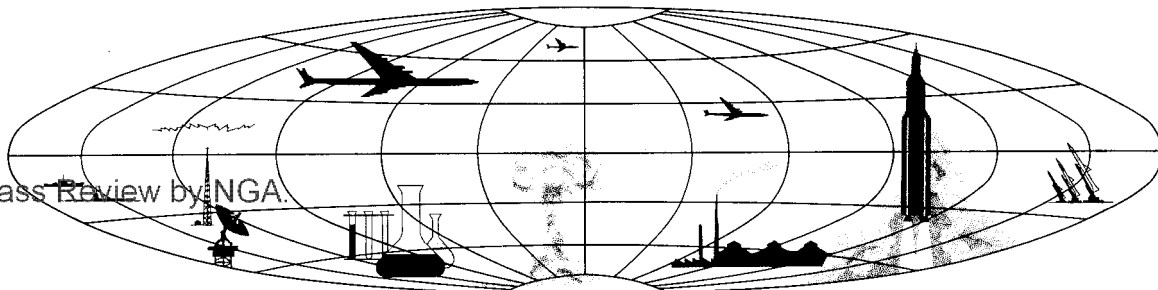


DIA



25X1

NATIONAL PHOTOGRAPHIC INTERPRETATION CENTER



Declass Review by NGA

TOP SECRET

GROUP 1
Excluded from automatic
downgrading and declassification

TOP SECRET

25X1
25X1

MISSION 4015, 24-27 JANUARY 1965

25X1

TABLE OF CONTENTS

PREFACE	2	
TRACK OF MISSION	3	
HIGHLIGHTS	7	
MISSILES	9	
AIR FACILITIES	14	
[REDACTED]	20	25X2
NAVAL ACTIVITY/PORTS	25	
[REDACTED]	26	25X2
MILITARY ACTIVITY	27	
COMPLEXES	40	
OTHER ACTIVITY	41	
ATTACHMENTS		APPENDIX

TOP SECRET

25X1

25X1

TOP SECRET

25X1

25X1

MISSION 4015, 24-27 JANUARY 1965

25X1

OAK PART IV MISSION 4015

PREFACE

THIS IS THE FOURTH OF 5 OAK REPORTS ON MISSION 4015 AND PROVIDES INFORMATION ON THOSE COMMITTEE ON OVERHEAD RECONNAISSANCE (COMOR) TARGETS OBSERVED ON THE PHOTOGRAPHY.

TARGETS ARE ARRANGED IN THE OAK BY SUBJECT AND WITHIN EACH SUBJECT BY COMOR TARGET NUMBER. TARGETS OF OPPORTUNITY OBSERVED DURING THE OAK REPORTING PERIOD ARE LISTED NUMERICALLY UNDER THE APPROPRIATE SUBJECT AFTER THE LISTING OF COMOR TARGETS. LOCATIONS OF TARGETS IN THIS REPORT ARE INDICATED BY THE COUNTRY CODE PRECEDING THE COORDINATES.

SELECTED PHOTOGRAPHIC REFERENCES FOR EACH TARGET OBSERVED AND REPORTED FOLLOW THE DESCRIPTION OF THE TARGET. PASS NUMBERS ARE SUFFIXED WITH EITHER AN A FOR ASCENDING (SOUTH-TO-NORTH) OR D FOR DESCENDING (NORTH-TO-SOUTH). FRAMES ARE INDICATED BY THE LETTERS FR. THE LETTER F PRECEDING FRAME NUMBERS INDICATES THE FORWARD CAMERA, AND THE LETTER A INDICATES THE AFT CAMERA. ABSENCE OF THESE LETTERS INDICATES THAT THESE ARE FRAME AND INDEX NUMBERS. UNIVERSAL REFERENCE GRID (X-Y) COORDINATES ARE GIVEN IN PARENTHESIS AFTER THE FRAME TO WHICH THEY APPLY. THIS GRID IS IDENTIFIED AS UNIVERSAL GRID NO 1, FEB 64. SYMBOLS INDICATING CONDITIONS WHICH AFFECT THE APPEARANCE OF THE TARGET ON THE PHOTOGRAPHY ARE AS FOLLOWS -- C (CLEAR), H (HAZE), CS (CLOUD SHADOW), HC (HEAVY CLOUD COVER), SC (SCATTERED CLOUD COVER), SD (SEMIDARKNESS), O (OBLIQUITY), S (SNOW), PQ (POOR IMAGE QUALITY).

OAK RECIPIENTS ARE CAUTIONED THAT THE INITIAL SCAN OF THE PHOTOGRAPHY IS BEING ACCOMPLISHED IN A SHORT TIME AND PRIOR TO FINAL REFINEMENT OF EPHEMERAL DATA. CONSEQUENTLY, FUTURE DETAILED ANALYSIS MAY RESULT IN MINOR ALTERATIONS.

TOP SECRET

25X1

25X1

Page Denied

Next 3 Page(s) In Document Denied

Highlights

TOP SECRET

25X1
25X1

MISSION 4015, 24-27 JANUARY 1965

25X1

HIGHLIGHTS

1. SVOBODNY ICBM LAUNCH AREA A

25X1

A MISSILE IS ERECTED ON THE LEFT PAD. PRELIMINARY MENSURATION INDICATES THE OVERALL LENGTH, INCLUDING THE HEIGHT OF THE LAUNCH STAND, THE UPPER PART OF THE MISSILE

25X1
25X1

2. OMSK AIRCRAFT PLANT 166

25X1

AN APPROXIMATELY 500- X 200-FT ADDITION HAS BEEN CONSTRUCTED AT THE FINAL ASSEMBLY AND CHECKOUT AREA AND FOUNDATION FOOTINGS INDICATE THAT THE ADDITION WILL BE EXTENDED TO APPROXIMATELY 1,000 FT IN LENGTH. SIX RAIL CARS, 55, 65, AND 80 FT IN LENGTH, ARE ON A SIDING AT CENTER OF PLANT. AIRCRAFT OBSERVED -- 2 FISHPOT AND 3 PROBABLE FISHPOT. AT OMSK AIRFIELD EAST CONNECTED BY ROAD TO OMSK AIRCRAFT PLANT 166 -- 17 FISHPOT, 13 PROBABLE FISHPOT, 18 FAGOT/FRESCO, 1 CAMEL, 1 CAT/CUB, AND 1 CAB ARE OBSERVED.

25X1

3. VERINO AIRFIELD

25X1

AIRCRAFT OBSERVED INCLUDE 107 FAGOT/FRESCO, 8 FITTER, 1 COLT, 1 SMALL STRAIGHT-WING, AND 1 PROBABLE SMALL STRAIGHT-WING.

25X1

TOP SECRET

25X1

25X1

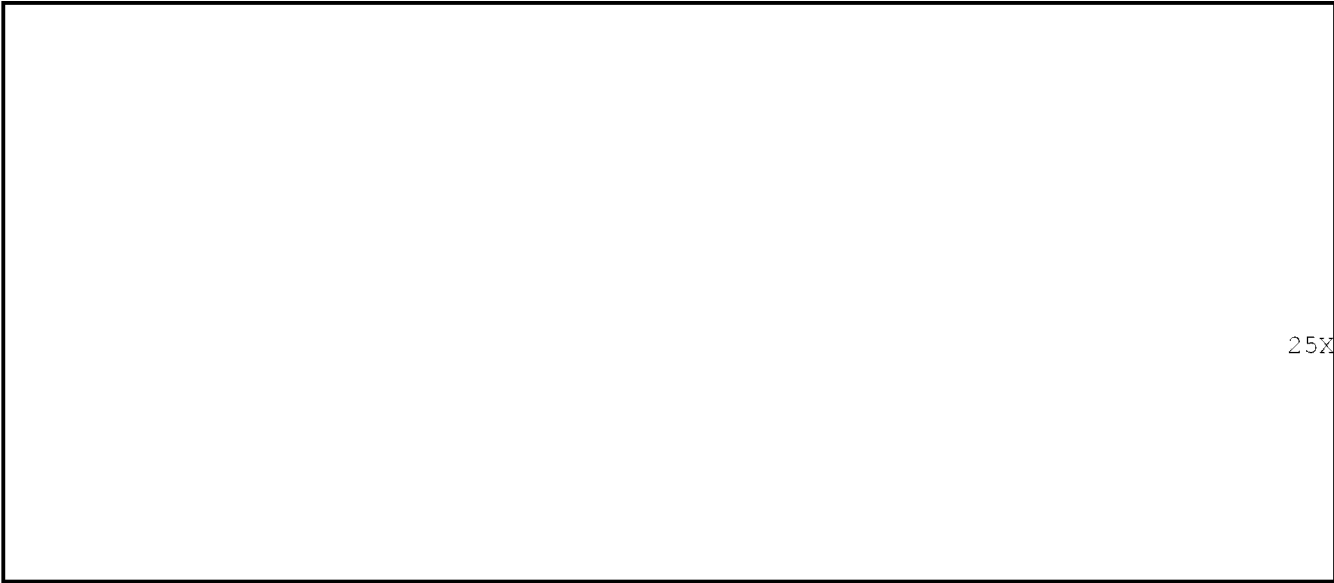
TOP SECRET

25X1

25X1

MISSION 4015, 24-27 JANUARY 1965

25X1



25X1

STATUS OF COMOR TARGET READOUT

NINETY COMOR TARGETS WERE OBSERVED IN THE OAK REPORTING PERIOD AND ARE COVERED IN THIS OAK.

TOP SECRET

25X1

25X1

Missiles

TOP SECRET

25X1
25X1

MISSION 4015, 24-27 JANUARY 1965

25X1

MISSILES

[REDACTED] VERKHNYAYA SALDA ICBM LNCH AREA E SITE 5 UR 5813N 06054E 25X1

LAUNCH AREA E IS COVERED ON FAIR QUALITY, NON-STEREO PHOTOGRAPHY. NO SIGNIFICANT CHANGE SINCE MISSION

[REDACTED] ROADS ARE SNOW-COVERED BUT APPEAR PASSABLE. 25X1

AN UNIDENTIFIED LINEAR OBJECT IS ADJACENT TO AND CANTED 45 DEGREES TO THE RIGHT TO THE ERECTOR ON THE LEFT LAUNCH PAD. AT THE LEFT ERECTOR, ADJACENT TO AND CANTED 90 DEGREES TO THE LEFT, ARE 2 INDISTINCT LINEAR OBJECTS EXTENDING TO THE OUTSIDE LIMIT OF THE PAD AND SLOPING DOWNWARD FROM THE ERECTOR TO GROUND LEVEL. NO CHANGE IN ESTABLISHED MENSURATION.

25X1

[REDACTED] VERKHNYAYA SALDA ICBM LNCH AREA F SITE 7 UR 5814N 06040E 25X1

LAUNCH AREA F IS COVERED ON FAIR QUALITY, NON-STEREO PHOTOGRAPHY. NO SIGNIFICANT CHANGE SINCE MISSION

[REDACTED] ROADS ARE SNOW-COVERED BUT APPEAR PASSABLE. 25X1

THE CENTER SILO COVER IS IN THE OPEN POSITION AND AN INDISTINCT OBJECT IS IN DEEP SHADOW ON THE ACCESS ROAD AT THE OPEN SILO. FOUR PERSONNEL-TYPE VEHICLES ARE ON THE SITE ACCESS ROAD AT THE SITE SUPPORT FACILITY. NO CHANGE IN PREVIOUSLY ESTABLISHED MENSURATION.

25X1

[REDACTED] VERKHNYAYA SALDA ICBM LNCH AREA G SITE 8 UR 5813N 06049E 25X1

LAUNCH AREA G IS COVERED ON FAIR QUALITY, NON-STEREO PHOTOGRAPHY.

NO SIGNIFICANT CHANGE SINCE [REDACTED] 25X1
NO CHANGE IN ESTABLISHED MENSURATION.
ROADS ARE SNOW COVERED BUT APPEAR PASSABLE.

TOP SECRET

25X1
25X1

TOP SECRET

[REDACTED]

MISSION 4015, 24-27 JANUARY 1965

[REDACTED]

[REDACTED]

[REDACTED]

[REDACTED]

SVOBODNY ICBM LAUNCH AREA A (SITE 3) UR 5154N 12810E

IN LAUNCH AREA A, A MISSILE IS ERECTED ON THE LEFT PAD. PRELIMINARY MENSURATION INDICATES THAT THE OVERALL LENGTH OF THE MISSILE [REDACTED] HOWEVER, THIS MEASUREMENT INCLUDES THE HEIGHT OF THE LAUNCH STAND WHOSE IMAGE IS INSEPARABLE FROM THE IMAGE OF THE MISSILE. THE UPPER PART OF THE MISSILE IS

[REDACTED]

TWO VEHICLES, ONE 60 FT LONG, ARE ON THE LOOP ROAD IN FRONT OF THE LEFT PAD. AN UNIDENTIFIED OBJECT IS IMMEDIATELY IN FRONT OF EACH MISSILE-READY BUILDING. BOTH UNIDENTIFIED OBJECTS ARE 90 FT LONG. ALL LINEAR MEASUREMENTS ARE ACCURATE TO WITHIN PLUS OR MINUS 5 FT AND THE HEIGHT MEASUREMENTS ON THE MISSILE ARE ACCURATE TO WITHIN PLUS OR MINUS 10 FT.

NO SIGNIFICANT CHANGE IN THE LAUNCH AREA OR ESTABLISHED MENSURATION SINCE [REDACTED]

[REDACTED]

[REDACTED]

SVOBODNY ICBM LAUNCH AREA D (SITE 4) UR 5158N 12807E

LAUNCH AREA D COVERED ON GOOD QUALITY STEREO PHOTOGRAPHY. NO SIGNIFICANT CHANGE [REDACTED]

[REDACTED]

NO CHANGE IN ESTABLISHED MENSURATION. A VEHICLE IS ON THE LEFT PAD.

[REDACTED]

[REDACTED]

SVOBODNY ICBM LAUNCH AREA F (SITE 5) UR 5151N 12813E

LAUNCH AREA F COVERED ON GOOD QUALITY NON-STEREO PHOTOGRAPHY. NO SIGNIFICANT CHANGE SINCE MISSION

[REDACTED]

[REDACTED]

TOP SECRET

[REDACTED]

[REDACTED]

TOP SECRET

25X1
25X1

MISSION 4015, 24-27 JANUARY 1965

25X1

[REDACTED] SVOBODNY ICBM LAUNCH AREA H (SITE 8) UR 5202N 12805E

25X1

LAUNCH AREA H COVERED BY GOOD QUALITY STEREO PHOTOGRAPHY. NO SIGNIFICANT CHANGE SINCE MISSION [REDACTED] NO CHANGE IN ESTABLISHED MENSURATION. A VEHICLE IS ON THE RIGHT PAD.

25X1

25X1

25X1

[REDACTED] UZHUR ICBM LAUNCH AREA D (SITE 4) UR 5517N 08926E

25X1

LAUNCH AREA COVERED BY VERY HAZY, SNOW-COVERED, STEREO PHOTOGRAPHY. LAUNCH SITE CAN BE IDENTIFIED ONLY.

TWO NEWLY IDENTIFIED SMALL RECTANGULAR BUILDINGS AND SEVERAL SMALLER SHED-LIKE BUILDINGS ARE APPROXIMATELY 4,400 FT NNE OF THE LAUNCH SITE WITH THE PREVIOUSLY REPORTED GROUP OF ASSOCIATED BUILDINGS.

25X1

[REDACTED] UZHUR ICBM LAUNCH AREA F (SITE 6) UR 5525N 08939E

25X1

LAUNCH AREA COVERED ON VERY HAZY, NON STEREO PHOTOGRAPHY WITH GROUND SNOW COVER. A POSSIBLE CONSTRUCTION RAMP IS VISIBLE EXTENDING OVER THE EDGE OF THE SILO EXCAVATION. DARKNESS AND LACK OF STEREO PRECLUDE INTERPRETATION OF DETAILS WITHIN THE EXCAVATION.

NO APPARENT CHANGE IN THE GROUP OF ASSOCIATED BUILDINGS 2,700 FT SE OF THE SILO EXCAVATION.

25X1

25X1

TOP SECRET

25X1

TOP SECRET

25X1
25X1

MISSION 4015, 24-27 JANUARY 1965

25X1

[REDACTED] ALEYSK ICBM LAUNCH AREA A (SITE 1) UR 5227N 08235E

25X1

IDENTIFICATION ONLY.

25X1

[REDACTED] TASIKMALAJA ROCKET PRODUCTION FACILITY ID 0720S 10812E

25X1

SOUTH END OF TASIKMALAJA AIRFIELD AND PART OF
NW QUARTER OF CITY ONLY PORTIONS OF 25-NM RADIUS
SEARCH AREA OBSERVED. NO MISSILE-RELATED ACTIVITY
OBSERVED IN CLOUD-FREE PORTIONS.

25X1

[REDACTED] MOSCOW SAM SITE E05-1 UR 5614N 03835E

25X1

SITE COVERED ON HAZY PHOTOGRAPHY WITH SCATTERED
CLOUD COVER AND GROUND SNOW. NO SIGNIFICANT CHANGES
OBSERVED IN THE EXTERIOR CONFIGURATION OR IN
ESTABLISHED MENSURATION FOR THE ORIGINAL
BUILDING TRIAD. NO ADDITIONAL CONSTRUCTION
ACTIVITY NOTED AT THE SECOND BUILDING TRIAD UNDER
CONSTRUCTION ON THE OPPOSITE SIDE OF THE LAUNCH AREA.
A NEWLY IDENTIFIED DITCH EXTENDS FROM THE CENTER
OF THE SOUTH WALL OF THE T-SHAPED BUILDING LOCATED
BETWEEN THE 2 TRIAD AREAS TOWARDS THE LARGE BUILDING
IN THE ORIGINAL TRIAD. BOTH BUILDING TRIADS
ARE ENCLOSED BY TRIPLE SECURITY FENCING THAT ALSO
INCLUDES 12 OF THE SA-1 LAUNCH POSITIONS AND 2 OF
THE CONTROL BUNKERS. A NUMBER OF THE LAUNCH POSITIONS
HAVE BEEN CLEARED OF SNOW, BUT NO MISSILE OR
GROUND SUPPORT EQUIPMENT COULD BE IDENTIFIED. A
BORROW PIT LOCATED BETWEEN THE LAUNCH AND GUIDANCE
AREAS SHOWS DIGGING AND TRACK ACTIVITY IN THE SNOW.

25X1

[REDACTED] MOSCOW SAM SITE E24-1 UR 5521N 03629E

25X1

THE SITE IS COVERED ON HAZY PHOTOGRAPHY WITH
SCATTERED CLOUD COVER AND GROUND SNOW. CHANGES
OBSERVED INCLUDE TRIPLE SECURITY FENCING THAT

25X1

TOP SECRET

25X1

TOP SECRET

25X1
25X1

MISSION 4015, 24-27 JANUARY 1965

25X1

ENCOMPASSES THE BUILDING TRIAD, 12 SA-1 SAM LAUNCH POSITIONS, AND 2 CONTROL BUNKERS. THE FENCING HAS BEEN CONSTRUCTED TO ALLOW FOR THE ADDITION OF A SECOND TRIAD, HOWEVER, THERE IS NO EVIDENCE OF CONSTRUCTION ACTIVITY FOR A SECOND TRIAD FACILITY AT THIS TIME. A CIRCULAR STRUCTURE IS VISIBLE ON THE GROUND AT THE SW CORNER OF THE LARGE TRIAD BUILDING. THIS STRUCTURE IS SIMILAR TO THE 90-FT CIRCULAR STRUCTURE EMPLACED ON THE ROOF OF THE LARGE TRIAD BUILDING AT SA-1 SAM SITE E33-1. ONLY THE ROOF LINE IS VISIBLE ON THE T-SHAPED BUILDING NW OF THE LARGE TRIAD BUILDING ON THE EAST SIDE OF THE CENTER LINE ROAD. THE BUILDING APPEARS TO HAVE BEEN MOUNDED, HOWEVER, DRIFTING SNOW COULD CREATE A MOUNDING APPEARANCE. TWO PIECES OF UNIDENTIFIED EQUIPMENT ARE POSITIONED ON RIB ROAD 2A. NO SIGNIFICANT CHANGES NOTED IN THE PREVIOUSLY ESTABLISHED MENSURATION.

25X1

CAIRO SAM SITE B04-2 EG 3020N 03128E

25X1

SITE CONTAINS 6 REVETTED LAUNCH POSITIONS, ALL PROBABLY CANVAS-COVERED AND OCCUPIED, A POSSIBLY UNOCCUPIED MOUNDED CENTRAL GUIDANCE AREA WITH 7 DRIVE-IN VEHICLE POSITIONS, 3 UNOCCUPIED MISSILE HOLD REVETMENTS, AND 7 OTHER UNOCCUPIED REVETMENTS. THE SITE SUPPORT IS COVERED BY SCATTERED CLOUDS.

ONLY THE WESTERN 50 PERCENT OF THE 5-NM RADIUS SEARCH AREA COVERED ON PHOTOGRAPHY. NO NUCLEAR SUPPORT FACILITIES OBSERVED IN CLOUD-FREE AREAS.

25X1

JADIDAH SUSPECT SRBM STORAGE AREA EG 3004N 03119E

25X1

NO EVIDENCE OF MISSILE OR RELATED ACTIVITY OBSERVED IN THE CAIRO/HELIOPOLIS AIRPORT AREA.

25X1

TOP SECRET

25X1

25X1

**Air
Facilities**

TOP SECRET

25X1

25X1

MISSION 4015, 24-27 JANUARY 1965

25X1

AIR FACILITIES

[REDACTED] DMSK AIRCRAFT PLANT 166 UR 5458N 07326E

25X1

AN ADDITION APPROXIMATELY 500 X 200 FT HAS BEEN CONSTRUCTED AT THE FINAL ASSEMBLY AND CHECKOUT AREA OF THE MAIN BUILDING AND FOUNDATION FOOTINGS INDICATE THAT THE ADDITION WILL BE EXTENDED TO APPROXIMATELY 1,000 FT IN LENGTH. A BATCH PLANT HAS BEEN CONSTRUCTED NEAR THE PLANT AREA TO SUPPORT THIS BUILDING PROGRAM. A LARGE CRANE SET UP AT THE WEST END OF THE MAIN ASSEMBLY BUILDING AND ADDITIONAL FOOTING SCARS SUGGEST THAT A BUILDING WILL ALSO BE CONSTRUCTED IN THIS AREA. THE MAIN PLANT AREA SHOWS NO SIGNIFICANT CHANGE

25X1

SIX UNUSUALLY LONG RAIL CARS MEASURING APPROXIMATELY 55, 65, AND 80 FT IN LENGTH ARE PARKED ON A SIDING IN THE CENTER OF THE PLANT.

AIRCRAFT AT FINAL ASSEMBLY PLANT -- 2 FISHPOT AND 3 PROBABLE FISHPOT.

(ATTACHMENT 1)

25X1

[REDACTED] CHING-SHUI-HO AIRFIELD CH 3944N 11310E

25X1

NO APPARENT CHANGE IN FACILITIES SINCE MISSION [REDACTED] NO RADAR FACILITIES OBSERVED.

25X1

AIRCRAFT -- 44 BEAGLE, 5 PROBABLE BEAGLE, AND 2 COLT.

25X1

[REDACTED] KENDARI AIRFIELD ID 0405S 12225E

25X1

8,000 X 230 FT ENE/WSW ASPHALT RUNWAY, SERVICEABLE, WITH CONCRETE APPROACH APRONS. AN 120 X 200-FT APRON IS ON ENE END OF RUNWAY.

SUPPORT FACILITIES APPEAR TO BE IN THE LATE

25X1

25X1

TOP SECRET

TOP SECRET

25X1

25X1

MISSION 4015, 24-27 JANUARY 1965

25X1

STAGES OF CONSTRUCTION. HAZE AND SCATTERED CLOUDS PRECLUDE A DETAILED ANALYSIS.

AIRCRAFT -- 1 CRATE/COACH.

25X1

AL HUDAYDAH AIRFIELD YE 1449N 04257E

25X1

4,068 X 100 FT N/S PROBABLE SAND RUNWAY, SERVICEABLE. FACILITIES INCLUDE 3 PROBABLE ADMINISTRATION BUILDINGS AND 74 TENTS. NO COMMUNICATIONS OR AIR DEFENSE FACILITIES OBSERVED.

AIRCRAFT -- 1 COLT.

25X1

NAJRAN AIRFIELD SR 1737N 04424E

25X1

NO APPARENT CHANGE IN FACILITIES SINCE MISSION FACILITIES INCLUDE 7 TENTS NORTH OF THE WNW END OF THE RUNWAY.

25X1

AIRCRAFT -- NONE OBSERVED.

25X1

PETROPAVLOVSK/YELIZOVO AIRFIELD UR 5310N 15827E

25X1

NO APPARENT CHANGE IN FACILITIES SINCE MISSION RUNWAY IS CLEARED OF SNOW.

25X1

TWO CONVENTIONAL AMMUNITION STORAGE AREAS ARE APPROXIMATELY 4,000 FT ESE OF THE SE END OF MAIN RUNWAY. NO ASM OR NUCLEAR FACILITIES OR HANDLING EQUIPMENT OBSERVED.

AIRCRAFT -- 8 CAB, 1 CRATE, AND 1 CAMP ON NW PARKING APRON, 10 BADGER PARKED ON HARDSTANDS ON WEST SIDE OF MAIN RUNWAY, 2 CAMP, 1 CAB, AND 1 CRATE ON WEST PARKING APRON, 1 CAB AND 11 HARE ON WEST SIDE OF MAIN TAXIWAY, 4 FISHPOT AND 4 FARMER ON SE

25X1

TOP SECRET

25X1

TOP SECRET

25X1

25X1

MISSION 4015, 24-27 JANUARY 1965

25X1

ALERT APRON, AND 10 FAGOT/FRESCO, 8 FISHPOT, AND 5 FARMER ON OLD RUNWAY NOW USED AS PARKING APRON SE OF MAIN RUNWAY.

25X1

VELIKAYA KEMA AIRFIELD UR 4530N 13711E

25X1

NO APPARENT CHANGE IN FACILITIES SINCE MISSION RUNWAY IS CLEARED OF SNOW. NO ELECTRONICS OR COMMUNICATIONS FACILITIES OBSERVED.

25X1

AIRCRAFT -- 1 CAB AND 13 SMALL SWEEP-WING.

25X1

SMIRNYKH AIRFIELD UR 4944N 14252E

25X1

NO APPARENT CHANGE IN FACILITIES SINCE MISSION RUNWAY AND TAXIWAYS ARE PARTIALLY CLEARED OF SNOW. A PROBABLE GCA/ILS ELECTRONICS SITE IS AT THE SOUTH END OF THE FIELD.

25X1

AIRCRAFT -- 6 PROBABLE FITTER, 23 SMALL SWEEP-WING, 1 LIGHT STRAIGHT-WING, AND 1 POSSIBLE HELICOPTER.

25X1

KHABAROVSK/BLAGODATNOYE AIRFIELD UR 4824N 13525E

25X1

NO APPARENT CHANGE IN FACILITIES

25X1

25X1

RADAR FACILITY CONTAINS 9 ANTENNAS WITH THE FOLLOWING PROBABLE IDENTIFICATIONS -- BARLOCK, TOKEN, STONECAKE, ROCKCAKE, FLATFACE, SPOONREST, KNIFEREST, FISHNET, AND TALL KING. GCA SITE CONTAINS PROBABLE LONGEYE, CROSSFORK, HOMETALK, AND DISCONE.

A PROBABLE AAM SECURED STORAGE FACILITY 0.5 NM NW OF CENTER OF RUNWAY CONTAINS 3 MEDIUM-SIZED AND 3 SMALL SEMI-RETTED PROBABLE DRIVE-IN BUILDINGS AND 4 SUPPORT BUILDINGS.

25X1

TOP SECRET

25X1

TOP SECRET

25X1

25X1

MISSION 4015, 24-27 JANUARY 1965

25X1

AIRCRAFT -- 12 PROBABLE FISHPOT, 8 POSSIBLE FISHPOT,
AND 18 PROBABLE FAGOT/FRESCO.

25X1

VERINO AIRFIELD UR 4801N 13506E

25X1

NO APPARENT CHANGE IN FACILITIES SINCE MISSION

25X1

GCA SITE BETWEEN RUNWAY AND TAXIWAY CONTAINS
DISCONE, HOMETALK, AND CROSSFORK. RADAR SITE 2 NM SE
OF RUNWAY CENTER CONTAINS FIXED HF COMMUNICATIONS
SITE WITH SEVERAL DIPOLE ANTENNAS AND 3 RADARS ON
MOUNDS, PROBABLY TOKEN, ROCKCAKE, AND FLATFACE.

AIRCRAFT -- 8 FITTER, 107 FAGOT/FRESCO, 1 COLT, 1
SMALL STRAIGHT-WING, AND 1 PROBABLE SMALL
STRAIGHT-WING.

25X1

TASHKENT AIRFIELD UR 4118N 06920E

25X1

NO APPARENT CHANGE IN FACILITIES SINCE
ONLY WEST TIP OF FLYAWAY
FIELD COVERED ON PHOTOGRAPHY. AIRFRAME PLANT IS
CLOUD COVERED. NO ELECTRONICS NOR COMMUNICATIONS
FACILITIES OBSERVED.

25X1

AIRCRAFT -- 2 CRATE, 1 CAB, 1 MEDIUM
STRAIGHT-WING, 2 SMALL STRAIGHT-WING, AND 2 POSSIBLE
CAB.

25X1

NEBIT DAG AIRFIELD UR 3928N 05421E

25X1

NO APPARENT CHANGE IN FACILITIES
NO ELECTRONICS OR COMMUNICATIONS FACILITIES
OBSERVED.

25X1

25X1

25X1

TOP SECRET

25X1

TOP SECRET

25X1

25X1

MISSION 4015, 24-27 JANUARY 1965

25X1

AIRCRAFT -- 39 PROBABLE FAGOT/FRESCO.

25X1

DZHEBEL AIRFIELD UR 3940N 05411E

25X1

NO APPARENT CHANGE IN FACILITIES SINCE
NO ELECTRONICS OR COMMUNICATIONS FACILITIES OBSERVED.

25X1

AIRCRAFT -- 38 FAGOT/FRESCO.

25X1

KUPINO AIRFIELD UR 5421N 07722E

25X1

NO APPARENT CHANGE IN FACILITIES SINCE
NO ELECTRONICS OR COMMUNICATIONS FACILITIES OBSERVED.

25X1

25X1

AIRCRAFT -- APPROXIMATELY 80 POSSIBLE AIRCRAFT.

25X1

OMSK AIRFIELD EAST UR 5458N 07333E

25X1

9,800 X 280 FT NE/SW CONCRETE RUNWAY, SERVICEABLE AND CLEARED OF SNOW.

SUPPORT AREA NEAR WEST END OF RUNWAY CONTAINS APPROXIMATELY 40 MISCELLANEOUS BUILDINGS, A POL STORAGE AREA, AND A SMALL WALLED AREA WITH 2 EARTH-MOUNDED BUILDINGS AND 4 SUPPORT BUILDINGS. AIRFIELD IS CONNECTED BY ROAD TO OMSK AIRCRAFT PLANT 166.

RADAR SITE CONTAINS 4 ANTENNAS ON MOUNDS, PROBABLY BARLOCK, STONECAKE, TOKEN, AND ROCKCAKE. SECOND RADAR SITE CONTAINS A CONFIRMED TALL KING.

AIRCRAFT -- 17 FISHPOT, 13 PROBABLE FISHPOT, 18 FAGOT/FRESCO, 1 CAMEL, 1 CAT/CUB, AND 1 CAB.

(ATTACHMENT 2)

25X1

25X1

TOP SECRET

TOP SECRET

25X1

25X1

MISSION 4015, 24-27 JANUARY 1965

25X1

25X1

25X1

GOMA AIRFIELD CX 0140S 02915E

APPROXIMATELY 6,000 FT OF RUNWAY OBSERVED THROUGH SCATTERED CLOUDS. VISIBLE PORTIONS APPEAR SERVICEABLE AND MARKINGS INDICATE ORIENTATION IS N/S. NORTH PORTION OF RUNWAY IS OBSCURED BY CLOUDS. FACILITIES OBSCURED BY CLOUDS AND HAZE. NO COMMUNICATIONS OR ELECTRONICS FACILITIES OBSERVED IN CLOUD-FREE PORTIONS.

AIRCRAFT -- NONE OBSERVED.

25X1

25X1

NING-MING AIRFIELD UNDER CONSTRUCTION CH 2207N 10707E

AREA PARTIALLY OBSCURED BY CLOUDS. VISIBLE PORTIONS INDICATE CONSTRUCTION ACTIVITY IS BEING MAINTAINED AT A HIGH LEVEL AND NUMEROUS PIECES OF GRADING/ CONSTRUCTION EQUIPMENT ARE VISIBLY WORKING. RAIL SPUR IS NOT VISIBLE. A VAGUE RUNWAY/TAXIWAY PATTERN IS BECOMING APPARENT.

25X1

25X1

25X1

TOP SECRET

Page Denied

Next 5 Page(s) In Document Denied

**Naval
Activity/
Ports**

TOP SECRET

25X1

25X1

MISSION 4015, 24-27 JANUARY 1965

25X1

NAVAL ACTIVITY/PORTS

[REDACTED] PADANG PORT FACILITIES ID 0059S 10022E

25X1

FACILITIES INCLUDE A PENINSULAR BREAKWATER APPROXIMATELY 2,650 FT LONG, AN INSULAR BREAKWATER APPROXIMATELY 840 FT LONG, 4 MARGINAL WHARVES, 2 BREASTING PLATFORMS, 1 GRAVING DOCK, QUAY SPACE, 12 MOORING BUOYS, AND 2 BRIDGE TRANSPORTERS. SHORE FACILITIES INCLUDE A TRANSIT SHED APPROXIMATELY 1,380 FT LONG, 2 POL STORAGE AREAS, APPROXIMATELY 16 WAREHOUSE-TYPE BUILDINGS SITUATED THROUGHOUT THE PORT AREA, 2 WAREHOUSES (680 X 50 FT AND 575 X 50 FT), AND AN ELEVATED RAIL LOADING FACILITY TO BREASTING PLATFORM.

VESSELS -- 1 APPROXIMATELY 465-FT CARGO VESSEL, 1 APPROXIMATELY 220-FT CARGO VESSEL AT WHARF, AND 1 APPROXIMATELY 485-FT CARGO VESSEL AND 1 APPROXIMATELY 205-FT POSSIBLE CARGO VESSEL MOORED IN HARBOR.

25X1

[REDACTED] GORKIY SHIPYARD HEAVY EQUIPMENT PLANT UR 5622N 04352E

25X1

NO APPARENT CHANGE IN FACILITIES [REDACTED]

25X1

25X1

VESSELS -- 1 PROBABLE UNIDENTIFIED SS IN 1 OF THE 2 TRANSPORTER DOCKS, 3 BARGES, AND 5 UNIDENTIFIED VESSELS. RIVER AROUND SHIPYARD IS PARTIALLY THAWED. PAN ICE THROUGHOUT AREA WHERE VESSELS ARE MOORED PRECLUDES GOOD VESSEL/WATER CONTACT.

25X1

TOP SECRET

25X1

25X1

Page Denied

Next 1 Page(s) In Document Denied

**Military
Activity**

TOP SECRET

25X1
25X1

MISSION 4015, 24-27 JANUARY 1965

25X1

MILITARY ACTIVITY

[REDACTED] TUNG-AN, MILITARY AREAS CH 2446N 11814E

25X1

NO APPARENT CHANGE IN AREA A SINCE MISSION [REDACTED] NO TANKS OR PIECES OF EQUIPMENT OBSERVED. SCARRING INDICATES THAT THE AREA IS OCCUPIED.

25X1

AREA B IS NOT COVERED ON PHOTOGRAPHY.

[REDACTED]

25X1

[REDACTED] TSO-NA BARRACKS AREA TI 2802N 09154E

25X1

NO APPARENT CHANGE IN FACILITIES SINCE [REDACTED] NO EVIDENCE OF SECURITY OR CONCENTRATION OF SUPPLIES OR ORDNANCE OBSERVED. TWO POSSIBLE VEHICLES OBSERVED AT AREA A.

25X1

[REDACTED]

25X1

[REDACTED] MENG-HAI ARMY BKS AND STGE DEPOT SOUTH CH 2158N 10028E

25X1

TWO ADJACENT SECURED AREAS ON SOUTH EDGE OF MENG-HAI CONTAIN A TOTAL OF 140 BARRACKS-TYPE BUILDINGS, 4 LARGE ADMINISTRATION BUILDINGS, APPROXIMATELY 80 MISCELLANEOUS SUPPORT AND STORAGE BUILDINGS, AND 22 H-SHAPED MESSHALLS.

TRAINING FACILITIES INCLUDE 3 OBSTACLE COURSES OR SMALL-ARMS FIRING RANGES AND A SMALL TRENCH NETWORK IMMEDIATELY SOUTH OF BARRACKS AREAS.

NO VEHICLES OR EQUIPMENT OBSERVED.

[REDACTED]

25X1

[REDACTED] CHANGRA BARRACKS AREA TI 3145N 09842E

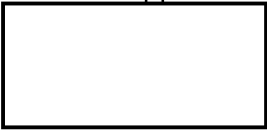
25X1

TWO BARRACKS AREAS OBSERVED 1 NM NORTH OF CHANGRA.

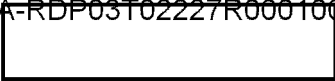
TOP SECRET

25X1

25X1



TOP SECRET



25X1
25X1

MISSION 4015, 24-27 JANUARY 1965



25X1

NORTH AREA CONTAINS 7 BARRACKS AND 4 MISCELLANEOUS BUILDINGS. SOUTH AREA IS WALLED AND INCLUDES 13 BARRACKS AND 10 MISCELLANEOUS BUILDINGS.

NO CONCENTRATION OF SUPPLIES, ORDNANCE, OR VEHICLES OBSERVED. ROADS AND TRAILS IN THE IMMEDIATE VICINITY APPEAR SERVICEABLE.



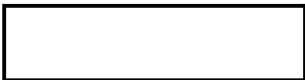
25X1



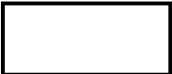
LE ARMY BARRACKS TI 2747N 09149E

25X1

NO MILITARY ACTIVITY OBSERVED AT OR IN THE IMMEDIATE VICINITY OF ABOVE COORDINATES ON CLEAR PHOTOGRAPHY.



25X1



TSO-KUNG ARMY BARRACKS TI 2956N 09748E

25X1

FOUR MILITARY AREAS OBSERVED WITHIN 15-NM RADIUS OF TSO-KUNG.

AREA A (EAST EDGE OF TSO-KUNG) -- SMALL BARRACKS AREA CONTAINS 6 PROBABLE BARRACKS AND 4 PROBABLE STORAGE/SUPPORT BUILDINGS.

AREA B (1 NM SOUTH OF TSO-KUNG ON EAST BANK OF THE LA-CHU HO) -- SMALL BARRACKS AREA CONTAINS 4 BARRACKS AND 1 STORAGE/SUPPORT BUILDING.

AREA C (4 NM SOUTH OF TSO-KUNG ON EAST BANK OF THE LA-CHU HO) -- AREA CONTAINS 3 PROBABLE BARRACKS, 6 SUPPORT BUILDINGS, AND 2 PROBABLY ASSOCIATED BARRACKS AREAS WITH A TOTAL OF 12 BARRACKS AND 10 SUPPORT BUILDINGS.

AREA D (APPROXIMATELY 8 NM SOUTH OF TSO-KUNG ON THE EAST BANK OF THE LA-CHU HO) -- PROBABLE BARRACKS AREA CONTAINS 1 ADMINISTRATION BUILDING, 4 BARRACKS, 1 LONG AND 5 SHORTER STORAGE BUILDINGS, AND APPROXIMATELY 5 SMALL MISCELLANEOUS SUPPORT BUILDINGS.

NO VEHICLES, WEAPONS, OR PIECES OF EQUIPMENT



25X1

TOP SECRET



25X1

TOP SECRET

25X1

25X1

MISSION 4015, 24-27 JANUARY 1965

25X1

OBSERVED. NO EVIDENCE OF SECURITY VISIBLE.

25X1

HSUEH-PA ARMY BARRACKS TI 3000N 0935E

25X1

FIVE MILITARY AREAS OBSERVED WITHIN A 15-NM RADIUS OF HSUEH-PA.

SEB MILITARY INSTALLATION -- BARRACKS AREA AT 29-52N 093-42E CONTAINS 31 BARRACKS-TYPE BUILDINGS AND 17 SUPPORT BUILDINGS. AREA IS PARTIALLY SECURED. NO VEHICLES OBSERVED.

TRO AREA MILITARY INSTALLATIONS -- CAMP A, 1 NM NORTH OF TRO, CONTAINS 5 BARRACKS AND 5 SUPPORT BUILDINGS. CAMP IS NOT SECURED BUT SOME TRENCHING IS JUST NORTH OF THE CAMP. NO VEHICLES OR EQUIPMENT OBSERVED. CAMP B, 2 NM ESE OF TRO, CONTAINS 8 BARRACKS, 13 SUPPORT BUILDINGS, AND 10 PROBABLE TENTS. AREA IS NOT SECURED. TWO PROBABLE CARGO TRUCKS OBSERVED.

HSUEH-PA ARMY BARRACKS -- AREA AT HSUEH-PA CONSISTS OF 12 PROBABLE BARRACKS. AREA IS NOT SECURED. NO VEHICLES OBSERVED.

HSUEH-PA ARMY BARRACKS ENE -- AREA 2.5 NM ENE OF HSUEH-PA CONTAINS 6 BARRACKS AND 6 SUPPORT BUILDINGS. AREA IS NOT SECURED. NO VEHICLES OBSERVED.

25X1

ANIVA ARMY BARRACKS BLAGOVESHCHENSKOYE UR 4645N 14230E

25X1

NO APPARENT CHANGE SINCE [REDACTED]. NO VEHICLES OBSERVED. INSTALLATION APPEARS OCCUPIED.

25X1

25X1

TOP SECRET

25X1

25X1

TOP SECRET

25X1
25X1

MISSION 4015, 24-27 JANUARY 1965

25X1

[REDACTED] ANIVA ARMY BARRACKS NORTHWEST UR 4643N 14231E

25X1

NO MILITARY ACTIVITY OBSERVED AT ABOVE COORDINATES.

25X1

[REDACTED] ANIVA ARMY BARRACKS RR STATION NORTHWEST UR 4642N 14231E

25X1

NO MILITARY ACTIVITY OBSERVED AT ABOVE COORDINATES.

25X1

[REDACTED] BELAYA TSERKOV ARMY BARRACKS NORTHWEST UR 4950N 03004E

25X1

NO APPARENT CHANGE SINCE [REDACTED] EXCEPT THE NORTHERNMOST AREA HAS 2 MOTOR POOLS WITH APPROXIMATELY 135 VEHICLES. NO ACTIVITY OBSERVED IN NORTHERN STORAGE AREA. TRACK ACTIVITY IN LOWER AREA APPEARS MEDIUM. NO ARMOR OBSERVED. AREA IS OCCUPIED.

25X1

25X1

[REDACTED] BIKIN ARMY BARRACKS AND AMMO DEPOT SE UR 4648N 13416E

25X1

AREA, SITUATED ALONG SE AND EAST EDGE OF BIKIN, CONTAINS EXPLOSIVES STORAGE, BARRACKS, TRACKED-VEHICLE TRAINING, AND SUPPORT AREAS. AREA IS OCCUPIED.

BARRACKS AREA ALONG EASTERN EDGE OF TOWN CONTAINS 3 U-SHAPED ADMINISTRATION BUILDINGS, 6 MULTISTORY BARRACKS, 11 SUPPORT BUILDINGS, 28 VEHICLE MAINTENANCE/STORAGE SHEDS, 2 TRACKED-VEHICLE DRIVER-TRAINING COURSES, AND A TANK FIRING RANGE WITH AT LEAST 6 MOVING TARGET RUNS.

THE STORAGE AREAS ALONG SE EDGE ARE RAIL-SERVED AND CONTAIN 32 STORAGE BUILDINGS (ONE IS 0.5 NM SE OF THE MAIN GROUP AND IS DOUBLY SECURED).

SNOW PRECLUDES DETAILED INTERPRETATION OF THE TRAINING FACILITIES.

25X1

TOP SECRET

25X1

[REDACTED]

TOP SECRET

[REDACTED]

25X1

MISSION 4015, 24-27 JANUARY 1965

[REDACTED]

25X1

ACTIVITY -- 28 TANKS AND 9 TRUCKS IN A SECURED VEHICLE PARK AT THE FIRING RANGE, 68 TANKS AT THE BARRACKS AREA, AND 24 TRUCKS AND 7 VEHICLES DISPERSED THROUGHOUT THE BARRACKS AREA.

[REDACTED]

25X1

[REDACTED]

NIKOLAYEVSK TROOP BARRACKS WEST UR 5308N 14042E

25X1

INSTALLATION IN THE NORTH-CENTRAL PART OF NIKOLAYEVSK-NA-AMURE CONTAINS 1 ADMINISTRATION BUILDING, 9 BARRACKS, 9 STORAGE BUILDINGS, 1 PROBABLE BUNKER, 3 VEHICLE SHEDS, 1 VEHICLE MAINTENANCE BUILDING, AND 14 SUPPORT BUILDINGS. APPROXIMATELY 15 POSSIBLE VEHICLES OBSERVED. INSTALLATION APPEARS OCCUPIED.

[REDACTED]

25X1

[REDACTED]

TASHKENT ARMY BARRACKS AND OCS UR 4118N 06915E

25X1

NO MILITARY ACTIVITY OR INSTALLATIONS OBSERVED AT ABOVE COORDINATES.

[REDACTED]

25X1

[REDACTED]

TASHKENT ARMY BARRACKS SOUTHWEST UR 4115N 06912E

25X1

INSTALLATION ON SW EDGE OF TASHKENT CONTAINS 11 BARRACKS, 3 ADMINISTRATION BUILDINGS, 18 GENERAL STORAGE BUILDINGS, 8 VEHICLE SHEDS, AND 35 SUPPORT BUILDINGS. AT LEAST 60 VEHICLES/PIECES OF EQUIPMENT ARE VISIBLE IN CLOUD-FREE PORTIONS. AREA APPEARS OCCUPIED.

[REDACTED]

25X1

[REDACTED]

TASHKENT GARRISON HEADQUARTERS AND BKS UR 4117N 06916E

25X1

NO MILITARY ACTIVITY OR INSTALLATIONS OBSERVED AT ABOVE COORDINATES.

[REDACTED]

25X1

25X1

TOP SECRET

[REDACTED]

25X1
25X1

TOP SECRET

MISSION 4015, 24-27 JANUARY 1965

[Redacted]

[Redacted] 25X1

[Redacted]

25X1

[Redacted]

ULAN-UDE ARMY BARRACKS UDA RIVER SOUTH UR 5149N 10744E

25X1

IDENTIFICATION ONLY.

[Redacted]

25X1

[Redacted]

YUZHNO-SAKHALINSK BKS BOLSHAYA YELAN UR 4655N 14244E

25X1

NO MILITARY ACTIVITY OBSERVED AT ABOVE COORDINATES.

[Redacted]

25X1

[Redacted]

YUZHNO-SAKHALINSK BARRACKS KHRISTOFOROVKA UR 4653N 14246E

25X1

IDENTIFICATION ONLY.

[Redacted]

25X1

[Redacted]

YUZHNO-SAKHALINSK BARRACKS LISTVENICHNOYE UR 4652N 14246E

25X1

IDENTIFICATION ONLY.

[Redacted]

25X1

[Redacted]

YUZHNO-SAKHALINSK BARRACKS USPENSKOYE UR 4651N 14234E

25X1

IDENTIFICATION ONLY.

[Redacted]

25X1

[Redacted]

KORSAKOV ARMY BARRACKS EAST UR 4637N 14250E

25X1

NO MILITARY ACTIVITY OBSERVED AT ABOVE COORDINATES.

[Redacted]

25X1

[Redacted] 25X1
[Redacted] 25X1

TOP SECRET

[Redacted]

TOP SECRET

25X1

25X1

MISSION 4015, 24-27 JANUARY 1965

25X1

[REDACTED] KORSAKOV ARMY BARRACKS NORTHEAST UR 4638N 14247E

25X1

NO MILITARY ACTIVITY OBSERVED AT ABOVE COORDINATES.

25X1

[REDACTED] KORSAKOV ARMY BARRACKS SOLOVYEVKA UR 4643N 14245E

25X1

NO APPARENT CHANGE SINCE [REDACTED] NO VEHICLES OBSERVED. INSTALLATION APPEARS OCCUPIED.

25X1

25X1

[REDACTED] KOZELSK ARMY BARRACKS UR 5402N 03546E

25X1

AREA CONTAINS 26 BARRACKS, 4 MOTOR VEHICLE SHEDS, 35 STORAGE BUILDINGS, AND AN EXPLOSIVES STORAGE AREA WITH 15 BUILDINGS AND 20 GENERAL STORAGE BUILDINGS. NO ARMOR OBSERVED. AREA IS OCCUPIED BUT ACTIVITY IS LIGHT. LITTLE TRACK ACTIVITY OBSERVED.

25X1

[REDACTED] KZYL ORDA ARMY BARRACKS UR 4450N 06530E

25X1

NO MILITARY INSTALLATION OBSERVED AT ABOVE COORDINATES.

25X1

[REDACTED] LIEPAJA ARMY BARRACKS NORTH UR 5633N 02101E

25X1

IDENTIFICATION ONLY.

25X1

[REDACTED] LIEPAJA BARRACKS NORTH UR 5634N 02101E

25X1

IDENTIFICATION ONLY.

25X1

25X1

25X1

TOP SECRET

25X1
25X1

TOP SECRET

MISSION 4015, 24-27 JANUARY 1965



25X1

[REDACTED] KUYBYSHEV HQ VOLGA MILITARY DISTRICT UR 5311N 05005E 25X1
NO MILITARY FACILITIES, COMMUNICATIONS FACILITIES, OR
ACTIVITY OBSERVED AT ABOVE COORDINATES ON CLEAR
PHOTOGRAPHY.

[REDACTED] 25X1

[REDACTED] ROSTOV HQ NORTH CAUCASUS MIL DISTRICT UR 4713N 03942E 25X1
NO MILITARY INSTALLATION, COMMUNICATIONS FACILITIES,
OR ACTIVITY OBSERVED ON GOOD QUALITY PHOTOGRAPHY.

[REDACTED] 25X1

[REDACTED] BRYANSK ORDNANCE DEPOT BRYANSK II UR 5313N 03423E 25X1
SECURED AREA CONTAINS 80 STORAGE BUILDINGS, 2
U-SHAPED ADMINISTRATION BUILDINGS, 6 SEPARATE
OPEN STORAGE AREAS, AND 11 GENERAL SUPPORT
BUILDINGS. AREA IS OCCUPIED. VERY LIGHT ACTIVITY
OBSERVED. NO ARMOR OBSERVED.

[REDACTED] 25X1

[REDACTED] BRYANSK ORDNANCE DEPOT NORTH UR 5315N 03421E 25X1
AREA CONTAINS 13 STORAGE BUILDINGS, 6 MULTISTORY
BARRACKS, 1 ADMINISTRATION BUILDING, 5 GENERAL
SUPPORT BUILDINGS, AND 1 MOTOR POOL WITH 4 MOTOR
VEHICLE SHEDS.
NO ARMOR OR VEHICLES OBSERVED. AREA IS OCCUPIED, BUT
ACTIVITY IS LIGHT.

[REDACTED] 25X1

[REDACTED] TENG-CHUNG MILITARY COMPLEX CH 2502N 09829E 25X1
LARGE COMPLEX LOCATED AT TENG-CHUNG CONSISTS OF 4
MAIN AREAS, 3 PROBABLE REGIMENTAL AREAS ON THE NW EDGE

TOP SECRET

25X1
25X1

[REDACTED]

TOP SECRET

[REDACTED]

25X1
25X1

MISSION 4015, 24-27 JANUARY 1965

[REDACTED] 25X1

OF TOWN (TENG-CHUNG ARMY BARRACKS WEST -- BE
[REDACTED] AND THE FOURTH, A PROBABLE DIVISION
HEADQUARTERS WITH SUPPORT UNITS APPROXIMATELY 1 NM
SOUTH OF TOWN (TENG-CHUNG ARMY BARRACKS SOUTH -- BE
[REDACTED]

25X1

25X1

COMPLEX CONTAINS APPROXIMATELY 200 BARRACKS, 10-12
ADMINISTRATION BUILDINGS, 28 H-SHAPED ADMINISTRATION/
SUPPORT BUILDINGS, AND NUMEROUS SUPPORT AND
STORAGE BUILDINGS. NUMEROUS TRENCHES ARE IN HILLS
ADJACENT TO COMPLEX.

NO VEHICLES, WEAPONS, OR EQUIPMENT OBSERVED. TRACK
ACTIVITY INDICATES THE INSTALLATION IS PROBABLY
OCCUPIED.

[REDACTED]

25X1

[REDACTED]

LU-HSI ARMY BARRACKS SOUTH CH 2424N 09833E

25X1

A DIVISION-SIZED COMPLEX WITH 3 REGIMENTAL AREAS AND 1
HEADQUARTERS AND SUPPORT AREA IS 1.5 NM SSW OF LU-HSI.

INSTALLATION CONTAINS APPROXIMATELY 200 BARRACKS-TYPE
BUILDINGS, 21 H-SHAPED MESSHALLS, 1 LARGE FIELD HOUSE,
AND 50 ASSORTED STORAGE AND SUPPORT BUILDINGS.

NO VEHICLES, WEAPONS, OR EQUIPMENT DISCERNIBLE.

OCCUPANCY OF AREA CANNOT BE DETERMINED.

[REDACTED]

25X1

[REDACTED]

MAN-NAI ARMY BARRACKS MENG-HUN CH 2150N 10023E

25X1

NO APPARENT CHANGE SINCE [REDACTED]
NO VEHICLES/PIECES OF EQUIPMENT OBSERVED. AREA
APPEARS OCCUPIED AND ACTIVE.

25X1

[REDACTED]

25X1

[REDACTED] 25X1
25X1

TOP SECRET

[REDACTED]

TOP SECRET

25X1

MISSION 4015, 24-27 JANUARY 1965

25X1

TASHKENT ARMY SUPPLY DEPOT SKLAD 28 UR 4116N 06918E

25X1

IDENTIFICATION ONLY.

25X1

KOMSOMOLSK SUPPLY DEPOT CENTRAL 1 UR 5034N 13700E

25X1

RAIL-SERVED, SECURED INSTALLATION CONTAINS 47 LARGE STORAGE BUILDINGS, 3 SMALL STORAGE BUILDINGS, AND 3 SUPPORT BUILDINGS. NO TANKS OR PIECES OF EQUIPMENT OBSERVED ON CLEAR, SNOW-COVERED PHOTOGRAPHY, HOWEVER, 5 RAIL CARS ARE AT THE NORTH END OF THE DEPOT. THE INSTALLATION IS OCCUPIED AND ACTIVE. NO NEW CONSTRUCTION OBSERVED.

25X1

KOMSOMOLSK SUPPLY DEPOT SOUTHWEST UR 5032N 13656E

25X1

INSTALLATION 2 NM WSW OF KOMSOMOLSK IS SECURED AND CONTAINS 15 STORAGE BUILDINGS, 5 SUPPORT BUILDINGS AND OPEN STORAGE. NO TANKS OR OTHER PIECES OF EQUIPMENT OBSERVED. NO NEW CONSTRUCTION OBSERVED ON CLEAR, SNOW-COVERED PHOTOGRAPHY.

25X1

KOMSOMOLSK SUPPLY DEPOT CENTRAL 2 UR 5034N 13701E

25X1

RAIL-SERVED INSTALLATION, SECURED BY A WALL, CONTAINS 35 STORAGE BUILDINGS AND 5 SUPPORT BUILDINGS. THE INSTALLATION IS OCCUPIED AND ACTIVE. NO NEW CONSTRUCTION OBSERVED. THE ENTIRE INSTALLATION IS COVERED ON SNOW-COVERED, GOOD QUALITY PHOTOGRAPHY. ACTIVITY -- TWO PROBABLE TRUCKS OBSERVED IN AREA.

25X1

TOP SECRET

25X1

25X1

TOP SECRET

25X1
25X1

MISSION 4015, 24-27 JANUARY 1965

25X1

[REDACTED] ULAN-UDE ARMY SUP DEPOT UDA RIVER SOUTH UR 5149N 10741E

25X1

RAIL-SERVED STORAGE AREA 3 NM EAST OF ULAN-UDE CONTAINS 6 LARGE WAREHOUSES, 54 SMALLER WAREHOUSES, AND SEVERAL SMALL SUPPORT BUILDINGS. HAZE PRECLUDES FURTHER INTERPRETATION. NO VEHICLES OR PIECES OF EQUIPMENT OBSERVED. ACTIVITY CANNOT BE DETERMINED.

25X1

[REDACTED] ULAN-UDE ARMY SUPPLY DEPOT UR 5149N 10736E

25X1

RAIL-SERVED SUPPLY DEPOT IN CENTER OF ULAN-UDE CONTAINS 39 PROBABLE WAREHOUSES AND 6 POSSIBLE POL TANKS. HAZE AND SNOW COVER PRECLUDE FURTHER INTERPRETATION. NO VEHICLES OR EQUIPMENT OBSERVED. NO ACTIVITY OBSERVED.

25X1

[REDACTED] KYAKHTA ARMY BARRACKS UR 5021N 10627E

25X1

AREA ON SOUTH EDGE OF KYAKHTA CONTAINS 10 BARRACKS, 2 ADMINISTRATION BUILDINGS, AND APPROXIMATELY 32 STORAGE/SUPPORT BUILDINGS. A SMALL-ARMS FIRING RANGE IS ON THE WEST SIDE OF THE BARRACKS AREA AND EXTENSIVE TRACK ACTIVITY IS ON THE EAST SIDE. A DEPENDENTS QUARTERS AREA CONTAINING 40 BUILDINGS IS NW OF THE BARRACKS AREA.

NO TANKS, ARMORED EQUIPMENT, WEAPONS OR VEHICLES OBSERVED. EXTENSIVE TRACK ACTIVITY IN SNOW INDICATES THE AREA IS PROBABLY OCCUPIED. AREA COMPLETELY COVERED ON CLEAR, SNOW-COVERED PHOTOGRAPHY.

25X1

[REDACTED] OMSK MANEUVER AREA SOUTH UR 5451N 07320E

25X1

FACILITIES 6 NM SOUTH OF OMSK CONSIST OF AN ADMINISTRATION/SUPPORT AREA IMMEDIATELY NORTH OF THE IRTYSH RIVER WITH 1 U-SHAPED AND 11 LARGE ADMINISTRATION/SUPPORT BUILDINGS, AT LEAST 80 SMALLER

TOP SECRET

25X1

25X1

TOP SECRET

25X1
25X1

MISSION 4015, 24-27 JANUARY 1965

25X1

BUILDINGS, AN UNDETERMINED NUMBER OF TENT BASES, 2 SMALL-ARMS FIRING RANGES, AND AN ATHLETIC OVAL. A SECURED MOTOR POOL IMMEDIATELY EAST CONTAINS 4 LARGE MAINTENANCE BUILDINGS, 1 OTHER LARGE BUILDING, 5 SMALLER BUILDINGS, AND 12 REVETTED HORIZONTAL POL TANKS. IMMEDIATELY NORTH OF THE ADMINISTRATION/SUPPORT AREA IS A DOUBLE FENCED AREA WITH 2 LARGE AND 7 SMALLER GABLE-ROOFED STORAGE BUILDINGS. A SMALLER BUILDING IS JUST OUTSIDE AND EAST OF THE AREA.

APPROXIMATELY 3 NM NORTH OF THE ADMINISTRATION/SUPPORT AREA ARE 2 DOUBLE-SECURED AREAS, 1 WITH 2 LARGE AND 8 SMALLER GABLE-ROOFED PROBABLE STORAGE BUILDINGS AND THE OTHER WITH 2 SMALL T-SHAPED BUILDINGS, 3 OTHER SMALL BUILDINGS, 25 SMALL HORIZONTAL POL TANKS, AND 3 REVETTED AREAS.

WEST OF THE ADMINISTRATION/SUPPORT AREA IS A TRACKED-VEHICLE DRIVER-TRAINING COURSE, A TANK FIRING RANGE (SUBCALIBER) AND 5 SMALL-ARMS FIRING RANGES. NUMEROUS TRENCHES AND FA/AAA REVETMENTS ARE SCATTERED THROUGHOUT THE AREA. AREA OBSERVED ON GOOD QUALITY, SNOW-COVERED PHOTOGRAPHY.

APPROXIMATELY 50 VEHICLES/PIECES OF EQUIPMENT OBSERVED IN MOTOR POOL.

(ATTACHMENTS 5 AND 6)

25X1

BONUS OMSK MILITARY AREA UR 5453N 07328E

FACILITIES 6.5 NM SE OF OMSK CONSIST OF A CENTRALLY LOCATED ADMINISTRATION/SUPPORT AREA WHICH IS FENCED AND CONTAINS 1 T-SHAPED AND 21 ADMINISTRATION/SUPPORT BUILDINGS, 1 PROBABLE VEHICLE MAINTENANCE AND 19 STORAGE-TYPE BUILDINGS. IMMEDIATELY WEST AND OUTSIDE OF THE FENCE ARE 6 ADMINISTRATION BUILDINGS, 32 BARRACKS, AND 24 OTHER BUILDINGS. IMMEDIATELY NORTH OF THE ADMINISTRATION/SUPPORT AREA IS A POL AREA WITH 1 BUILDING, 3 MOUNDED AREAS, AND 13 LARGE AND 12 SMALL PROBABLE HORIZONTAL POL

TOP SECRET

25X1

25X1

25X1
25X1

TOP SECRET

MISSION 4015, 24-27 JANUARY 1965

25X1

TANKS. IMMEDIATELY EAST OF THE ADMINISTRATION/SUPPORT AREA IS A MOVING TARGET TANK-FIRING RANGE (SUBCALIBER). A TRACKED-VEHICLE DRIVING RANGE IS APPROXIMATELY 1 NM WEST OF THE ADMINISTRATION/SUPPORT AREA.

NUMEROUS UNOCCUPIED TRENCH SYSTEMS AND FA/AAA REVETMENTS ARE SCATTERED THROUGHOUT AREA.

TWENTY-TWO TANKS/SP GUNS, 13 CARGO TRUCKS, 11 OTHER VEHICLES, AND 12 OTHER VEHICLES/PIECES OF EQUIPMENT OBSERVED IN AREA.

AREA COVERED ON VERY GOOD QUALITY, SNOW-COVERED PHOTOGRAPHY.

(ATTACHMENTS 7 AND 8)

25X1

TOP SECRET

25X1

25X1

Complexes

TOP SECRET

25X1

25X1

MISSION 4015, 24-27 JANUARY 1965

25X1

COMPLEXES

[REDACTED] SUNCHON COMPLEX KN 3925N 12556E

25X1

COMPLEX INCLUDES SEVERAL SMALL INDUSTRIES AND A FERTILIZER/CHEMICAL PLANT. SMOKE FROM THE LATTER INDICATES THAT IT IS ACTIVE. THERE IS ACTIVITY IN THE RAIL YARD AND 2 TRAINS ARE VISIBLE IN THE VICINITY OF TOWN. TWO AIRFIELDS IN THE AREA HAVE BEEN CLEARED OF SNOW BUT NO AIRCRAFT OBSERVED. TOWN AND VICINITY COVERED ON HAZY, NON-STEREO PHOTOGRAPHY.

25X1

[REDACTED]
[REDACTED] CHONGJIN AREA MILITARY INSTALL KN 4146N 12946E

25X1

INDUSTRIAL FACILITIES INCLUDE 2 IRON AND STEEL PLANTS WITH SMOKE RISING FROM STACKS, AND MISCELLANEOUS LIGHT INDUSTRIES. TRANSPORTATION FACILITIES INCLUDE RAIL LINE WITH 2 MARSHALLING YARDS AND A MAINTENANCE SHOP. PORT FACILITIES INCLUDE 3 AREAS OF QUAYS PROTECTED BY BREAKWATERS. ONE AREA CONTAINS 3 SMALL FREIGHTERS. MILITARY FACILITIES INCLUDE AN AVIATION SCHOOL AND A SOD AIRFIELD WITH 22 SMALL STRAIGHT-WING AND 18 PROBABLE AN-2 AIRCRAFT. TARGET COMPLETELY COVERED ON FAIR QUALITY PHOTOGRAPHY.

25X1

[REDACTED]
[REDACTED] AKETI RAILROAD TERMINUS AND YARD CX 0243N 02350E

25X1

AREA IS MAINLY RESIDENTIAL WITH RAILYARD AND APPROXIMATELY 60 RAIL CARS, A STORAGE FACILITY, AND A TRANSLOADING FACILITY. NO MILITARY ACTIVITY OBSERVED.

FIVE RIVER FREIGHTERS AND AT LEAST 3 SMALLER CRAFT ARE DOCKED IN THE RIVER. A SHORT LANDING STRIP IS ACROSS THE RIVER FROM AKETI.

25X1

TOP SECRET

25X1

25X1

**Other
Activity**

[Redacted]

TOP SECRET [Redacted]

25X1

MISSION 4015, 24-27 JANUARY 1965

[Redacted]

25X1

OTHER ACTIVITY

[Redacted]

BEREZOVKA/KRASNOARMEYSKOYE SEN OP CMLX UR 5111N 04600E

25X1

ONLY THE OPERATIONS SUPPORT RAIL FACILITY, WHICH IS APPROXIMATELY 14 NM NORTH OF THE OPERATIONS AREA, AT THE TOWN OF ASINOVKA IS COVERED ON PHOTOGRAPHY. AMONG THE ROLLING STOCK IN THE RAIL FACILITY ARE AT LEAST 33 LONG RAIL CARS SIMILAR IN APPEARANCE TO THOSE OBSERVED AT BORISOGLEBSK AND GOLOVCHINO, AND AT LEAST 7 SHORTER CARS. THE TRANSLOADING FACILITY IS IDENTICAL TO THOSE AT MOST OF THE OTHER SENSITIVE OPERATIONS COMPLEXES.

[Redacted]

25X1

[Redacted]

25X1

25X1

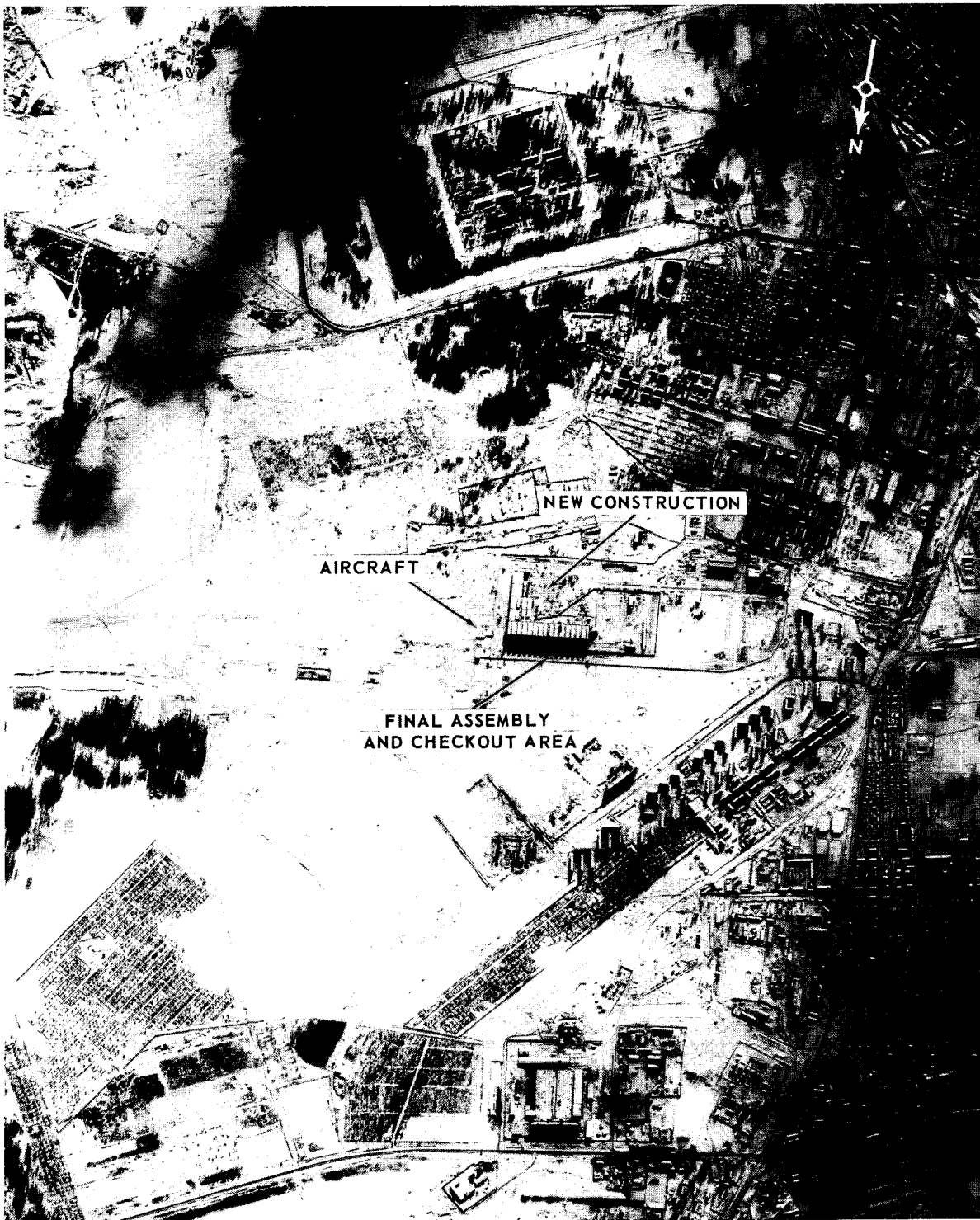
TOP SECRET [Redacted]

Attachments

TOP SECRET

MISSION 4015, 24-27 JANUARY 1965

25X1
ATTACHMENT 1



AIRCRAFT PLANT 166, OMSK, USSR

NPIC J-7373 (2/65)

TOP SECRET

TOP SECRET

MISSION 4015, 24-27 JANUARY 1965

25X1

ATTACHMENT 2



OMSK AIRFIELD EAST, USSR

NPIC J-7374 (2/65)

25X1

25X1

TOP SECRET

Page Denied

Next 1 Page(s) In Document Denied

TOP SECRET

MISSION 4015, 24-27 JANUARY 1965

ATTACHMENT 5



MANEUVER AREA SOUTH, OMSK, USSR

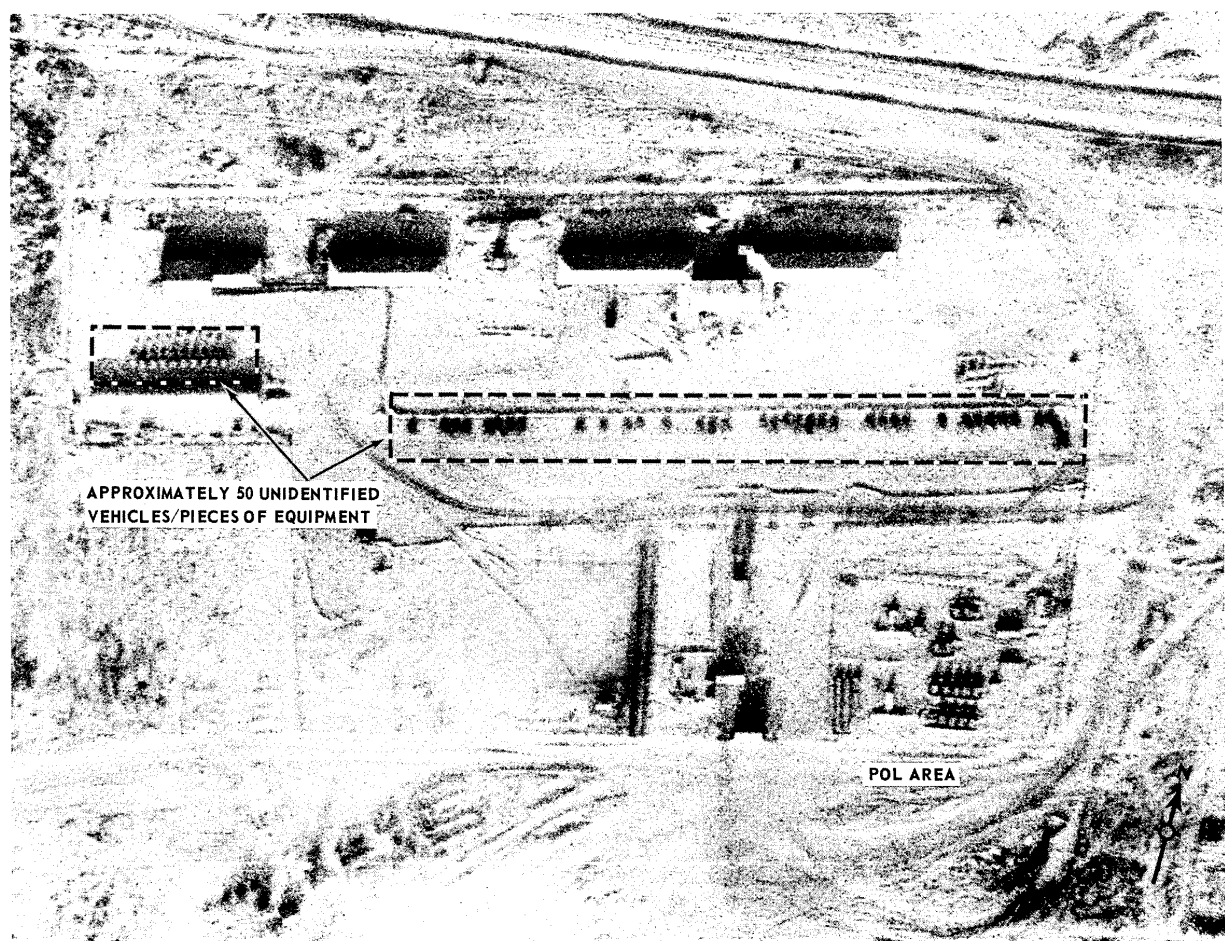
NPIC J-7377. (2/65)

25X1

25X1

TOP SECRET

25X1



NPIC J-7378 (2/65)

MANEUVER AREA SOUTH, OMSK, USSR

TOP SECRET

MISSION 4015, 24-27 JANUARY 1965

TOP SECRET

25X1
ATTACHMENT 6

TOP SECRET

[Redacted]

TOP SECRET

MISSION 4015, 24-27 JANUARY 1965

ATTACHMENT 7



NPIC J-7379 (2/65)

MILITARY AREA, OMSK, USSR

TOP SECRET



NPIC J-7380 (2/65)

MILITARY AREA, OMSK, USSR

5X1

TOP SECRET

MISSION 4015, 24-27 JANUARY 1965

5X1

ATTACHMENT 8

TOP SECRET

TOP SECRET

TOP SECRET