

**TOP SECRET**

# OAK

## SUPPLEMENT

PHOTOGRAPHIC INTERPRETATION REPORT



**MISSION 4027**

**20-25 APRIL 1966**

**PART II**



MAY 1966  
COPY 185  
37 PAGES

25X1

Declass Review by NGA



25X1

GROUP 1 EXCLUDED FROM  
AUTOMATIC DOWNGRADING  
AND DECLASSIFICATION

**TOP SECRET**

**Page Denied**

**TOP SECRET**

**MISSION 4027 : 20-25 APR 1966**

**TABLE OF CONTENTS**

<b>PREFACE</b>	<b>2</b>
<b>HIGHLIGHTS</b>	<b>3</b>
<b>MISSILES</b>	<b>4</b>
<b>AIR FACILITIES</b>	<b>10</b>
<b>NUCLEAR ENERGY</b>	<b>18</b>
<b>ELECTRONICS/COMMUNICATIONS</b>	<b>19</b>
<b>MILITARY ACTIVITY</b>	<b>25</b>
<b>COMPLEXES</b>	<b>32</b>
<b>OTHER ACTIVITY</b>	<b>34</b>
<b>ATTACHMENTS</b>	<b>APPENDIX</b>

**TOP SECRET**

**1**

**TOP SECRET**

MISSION 4027, 20-25 APRIL 1966

# OAK SUPPLEMENT - PART II

## MISSION 4027

### PREFACE

THIS IS THE SECOND OF SEVERAL OAK SUPPLEMENT REPORTS ON MISSION 4027 AND PROVIDES INFORMATION ON THE COMMITTEE ON OVERHEAD RECONNAISSANCE (COMOR) TARGETS OBSERVED ON THE PHOTOGRAPHY AND NOT INCLUDED IN THE OAK REPORTS FOR THIS MISSION. ALSO INCLUDED IN THIS REPORT ARE PREVIOUSLY REPORTED NON-COMOR TARGETS REFLECTING SIGNIFICANT CHANGE, TARGETS WITH SIGNIFICANT ORDER OF BATTLE (OB) INFORMATION, AND TARGETS WHICH ARE EITHER NEWLY IDENTIFIED OR KNOWN BUT REPORTED FOR THE FIRST TIME BY NPIC.

TARGETS ARE ARRANGED IN THE OAK SUPPLEMENT BY SUBJECT AND WITHIN EACH SUBJECT BY COMOR TARGET NUMBER. PREVIOUSLY REPORTED NON-COMOR TARGETS ARE LISTED UNDER THE APPROPRIATE SUBJECT AFTER THE LISTING OF COMOR TARGETS. NEWLY REPORTED TARGETS ARE DESIGNATED AS BONUS TARGETS AND ARE LISTED AFTER THE NON-COMOR TARGETS. LOCATIONS OF TARGETS IN THIS REPORT ARE INDICATED BY THE COUNTRY CODE AND THE COORDINATES.

SELECTED PHOTOGRAPHIC REFERENCES FOR EACH TARGET FOLLOW THE DESCRIPTION OF THE TARGET. SYMBOLS FOR LIMITING CONDITIONS AFFECTING PHOTOGRAPHY ARE C (CLEAR), SC (SCATTERED CLOUD COVER), HC (HEAVY CLOUD COVER), H (HAZE), CS (CLOUD SHADOW), S (SNOW), O (OBLIQUITY) SD (SEMI DARKNESS), D (DARKNESS), GC (GROUND COVER), CF (CAMOUFLAGE), AND GR (GROUND RESOLUTION). INTERPRETABILITY OF THE PHOTOGRAPHY IS CATEGORIZED AS G (GOOD), F (FAIR), OR P (POOR). THE EXTENT OF PHOTOGRAPHIC COVERAGE IS DENOTED BY THE SYMBOLS T (TOTAL) OR PT (PARTIAL). THE MODE OF COVERAGE IS INDICATED BY ST (STEREO), PS (PARTIAL STEREO), OR NS (NON-STEREO).

RECIPIENTS ARE CAUTIONED THAT THE INITIAL SCAN OF THE PHOTOGRAPHY IS BEING ACCOMPLISHED IN A SHORT TIME AND PRIOR TO FINAL REFINEMENT OF EPHEMERIS DATA. CONSEQUENTLY, FUTURE DETAILED ANALYSIS MAY RESULT IN MINOR ALTERATIONS.

FOR THE CONVENIENCE OF THE USER, AN INDEX TO ALL COMOR TARGETS IN THE SUPPLEMENT IS INCLUDED WITH THE FINAL EDITION OF THE SUPPLEMENT. FOR TRACK MAPS FOR THIS MISSION, SEE [REDACTED] THE OAK REPORTS ON THIS MISSION. SEE [REDACTED] FIRST OAK SUPPLEMENT REPORT.

25X1

25X1

**TOP SECRET**

## Highlights

**TOP SECRET**

MISSION 4027 20-25 APR 1966

25X1  
25X1

HIGHLIGHTS

1. NIZHNYAYA SALDA STATIC TEST FACILITY

25X1

THE MONITOR-ROOFED HORIZONTAL TEST BUILDING CAN NOW BE SEEN TO CONTAIN 4 TEST CELLS WITH EACH CELL HAVING AN L-SHAPED POSSIBLE CRANE POSITIONED OVER IT.

2. SARY-SHAGAN INSTRUMENTATION SITE 2

25X1

INSTRUMENTATION SITE 2 IS COVERED ON THE FIRST LARGE SCALE PHOTOGRAPHY OF THIS SITE

25X1

3. SUMMARY OF ACTIVITY, SOUTH CHINA

ALL PHOTOGRAPHIC PASSES OVER CHINA, SOUTH OF 32-00N HAVE BEEN EXPLOITED. ALL SIGNIFICANT CHANGES AND OB HAVE BEEN REPORTED IN EITHER THE OAK OR THE OAK SUPPLEMENTS. THE PHOTOGRAPHY IS APPROXIMATELY 35 PERCENT CLOUD COVERED. THE REMAINDER OF THE COVERAGE OVER THE AREA WAS MOSTLY OF VERY GOOD INTERPRETABILITY. NO SIGNIFICANT CHANGES ARE OBSERVED IN OB. CONTINUING ACTIVITY AND EXPANSION OF FACILITIES AT AN-SHUN AND KUEI-YANG HAVE BEEN REPORTED.

STATUS OF COMOR TARGET READOUT

NINETY-SEVEN COMOR TARGETS WERE OBSERVED DURING THE OAK SUPPLEMENT REPORTING PERIOD AND ARE CONTAINED IN THIS REPORT.

**TOP SECRET**

3

25X1  
25X1

**Missiles**

TOP SECRET

25X1  
25X1

MISSION 4027 20-25 APR 1966

MISSILES

PLESETSK SSM LAUNCH AREA F

UR 6252N 04044E

25X1

CONTINUING ANALYSIS OF LAUNCH AREA F AT PLESETSK, REPORTED IN THE OAK, PART III, REVEALS THE FOLLOWING VEHICLES/PIECES OF EQUIPMENT WITHIN THE LAUNCH AREA --2 EMPTY MISSILE TRANSPORTERS, 4 FUEL TRAILERS, 1 MISSILE CHECKOUT TENT, 2 ERECTORS (ONE ON EACH PAD), 1 POSSIBLE MISSILE TRANSPORTER, AND AT LEAST 7 UNIDENTIFIED VEHICLES.



25X1

SHIRVANSKAYA MRBM LAUNCH SITE

UR 4425N 03954E

ONE PROBABLE MISSILE ERECTOR, 1 PROBABLE MISSILE TRANSPORTER, AND 3 OTHER VEHICLES ARE OBSERVED AT LAUNCH SITE. A NEW PROBABLE GARAGE AT THE SUPPORT SITE APPEARS ALMOST COMPLETE. NO OTHER CHANGES IN FACILITIES OBSERVED. NO NUCLEAR WARHEAD HANDLING FACILITY IS OBSERVED AT OR NEAR LAUNCH AREA.



25X1

SARY-SHAGAN LAUNCH COMPLEX B (ZONE B)

UR 4559N 07231E

CONTINUING ANALYSIS OF MISSION 4027 REVEALS A SMALL PROBABLE SWEEP-WING AIRCRAFT IN FLIGHT IN THE VICINITY OF LAUNCH COMPLEX B AT THE SARY-SHAGAN ANTIMISSILE TEST CENTER. CONTRAIL IS FIRST OBSERVED APPROXIMATELY 10 NM NORTH OF THE COMPLEX OPERATIONS AREA. THE AIRCRAFT CONTRAIL ENCIRCLES THE COMPLEX TO THE WEST AND THE AIRCRAFT IS HEADING GENERALLY SE AT THE TIME OF PHOTOGRAPHY.

SEE OAK, PART II FOR PREVIOUS REPORT ON LAUNCH COMPLEX B.



25X1

TOP SECRET

25X1

25X1



**TOP SECRET**

25X1

25X1

MISSION 4027 20-25 APR 1966

HULWAN MUNITIONS PLANT 63

EG 2952N 03120E

25X1

MISSILE PRODUCTION CANNOT BE NEGATED OR CONFIRMED. CONSTRUCTION ACTIVITY IS STILL EVIDENT. NUMEROUS SMALL POSSIBLE CYLINDRICAL OBJECTS OBSERVED IN OPEN STORAGE AREA NEAR SOUTH END OF PLANT.

25X1

NIZHNYAYA SALDA STATIC TEST FACILITY

UR 5810N 06057E

FACILITY CONTAINS A HORIZONTAL TEST BUILDING, AN AIR LIQUEFACTION PLANT, A POSSIBLE PROPELLANT PREPARATION/TEST BUILDING UNDER CONSTRUCTION, NUMEROUS SUPPORT BUILDINGS, AND A HOUSING AREA. CONSTRUCTION CONTINUES ON THE POSSIBLE PROPELLANT PREPARATION/TEST BUILDING. A SUPPORT BUILDING IN THE CENTER OF THE FACILITY HAS BEEN ROOFED

25X1

SEVEN CYLINDRICAL OBJECTS ARE GROUPED NEAR THIS BUILDING. NUMEROUS VEHICLES AND MATERIALS IN OPEN STORAGE ARE VISIBLE THROUGHOUT THE FACILITY.

THIS PHOTOGRAPHY GIVES THE BEST VIEW OF THE HORIZONTAL TEST BUILDING OBTAINED TO DATE. IT IS IDENTICAL TO BUILDINGS AT STATIC TEST FACILITIES AT UFA, FAUSTOVO, VORONEZH, AND ZALENEGORSK. HOWEVER, THE VORONEZH AND ZALENEGORSK FACILITIES HAVE BEEN MODIFIED SOMEWHAT.

THE MONITOR-ROOFED HORIZONTAL TEST BUILDING CAN NOW BE SEEN TO CONTAIN 4 TEST CELLS WITH EACH CELL HAVING AN L-SHAPED POSSIBLE CRANE POSITIONED OVER IT. A CONTROL/INSTRUMENTATION SECTION PROJECTS OUTWARD FROM THE MIDDLE OF THE TEST BUILDING. THE TEST BUILDING RESTS ON A LEVEL AREA CUT IN THE HILLSIDE. A LARGE, RECTANGULAR, HARDENED BLAST PAD IS ALSO CUT INTO THE HILLSIDE BELOW THE LEVEL OF THE TEST BUILDING. A SLOPING BLAST DEFLECTOR CONNECTS THE PAD WITH THE TEST CELLS. A TUBULAR OBJECT IS VISIBLE PROJECTING DOWNWARD FROM THE EASTERMOST TEST CELL AND EXTENDING PART WAY DOWN THE FACE OF THE BLAST DEFLECTOR. THIS TEST CELL HAS APPARENTLY BEEN MODIFIED IN THAT IT IS CONNECTED BY PIPELINE TO A SMALL STRUCTURE WITH ADJACENT COOLING TOWERS. A COVERED STRUCTURE NEARBY MAY CONTAIN HORIZONTAL PRESSURE TANKS AND IS CONNECTED BY A PIPELINE TO THE EASTERMOST TEST CELL. A WATER STANDPIPE TO THE NORTH IS ALSO CONNECTED BY A PIPELINE TO THE EASTERMOST TEST CELL. A PROBABLE PROPELLANT PIPELINE LEADS FROM THE WEST SIDE OF THE TEST BUILDING

25X1

25X1

5

**TOP SECRET**

**TOP SECRET**

MISSION 4027 20-25 APR 1966

25X1

25X1

TO A RAIL TRANSFER POINT HAVING SWITCHBACK ACCESS TO THE AIR LIQUEFACTION PLANT. BEFORE ENTERING THE TEST BUILDING, THIS PIPELINE APPEARS TO ENTER A PROBABLE TANK WITH POSSIBLE ATTACHED COOLING COILS. A SMALL CYLINDRICAL OBJECT IS ON THE ROAD IMMEDIATELY TO THE NW. STAINS FROM FORMER TESTS ARE VISIBLE ON THE SLOPING DEFLECTOR AND BLAST PAD.

(SEE ATTACHMENT)

25X1

SEVASTOPOL NVL B & SHPYD SEVMORZAVOD 497 UR 4436N 03332E

CONTINUING ANALYSIS OF MISSION 4027 REVEALS THE FOLLOWING CHANGES IN THE ORDER OF BATTLE REPORTED IN THE OAK, PART III. AT THE NAVAL BASE, 1 KOTLIN-CLASS DD SHOULD BE DELETED AND 1 KILDIN-CLASS DDGS, 1 LAMA-CLASS AEM, 1 POSSIBLE OSKOL-CLASS ASL, AND 1 ANGARA-CLASS AG SHOULD BE ADDED.

25X1

25X1

BAKU SAM SITE A13-2

UR 4018N 04959E

NO SIGNIFICANT CHANGE IN FACILITIES.

25X1

BARANO-ORENBURGSKOYE MRBM CPLX SAM B12-2

UR 4413N 13143E

NO APPARENT CHANGE IN FACILITIES.

25X1

BARANO-ORENBURGSKOYE MRBM CPLX SAM B13-2

UR 4410N 13145E

NO SIGNIFICANT CHANGES OBSERVED.

25X1

**TOP SECRET**

25X1

25X1

**TOP SECRET**

MISSION 4027 20-25 APR 1966

BIROBIDZHAN SAM SITE A15-2

UR 4844N 13258E

NO SIGNIFICANT CHANGE OBSERVED.

[Redacted]

CHEREMKHOVO SAM SITE B18-2

UR 5249N 10307E

THREE LAUNCH POSITIONS ARE OCCUPIED. OCCUPANCY OF THE CENTRAL GUIDANCE AREA IS UNDETERMINED.

[Redacted]

DOLON SAM SITE A04-2

UR 5038N 07917E

NO SIGNIFICANT CHANGES OBSERVED.

[Redacted]

DOLON SAM SITE B22-2

UR 5023N 07902E

NO SIGNIFICANT CHANGES OBSERVED.

[Redacted]

GROZNYI SAM SITE A05-2

UR 4324N 04547E

NO SIGNIFICANT CHANGES OBSERVED.

[Redacted]

KHABAROVSK SAM SITE B08-2

UR 4829N 13529E

NO SIGNIFICANT CHANGES OBSERVED.

[Redacted]

KYAKHTA SAM SITE A19-2

UR 5020N 10626E

NO SIGNIFICANT CHANGES OBSERVED.

[Redacted]

**TOP SECRET**

**TOP SECRET**

MISSION 4027 20-25 APR 1966

25X1

25X1

NIKOLAYEV SAM SITE A19-2

UR 4648N 03158E

NO SIGNIFICANT CHANGES OBSERVED.

25X1

25X1

NIKOLAYEV SAM SITE B09-2

UR 4658N 03215E

NO SIGNIFICANT CHANGES OBSERVED.

25X1

NIKOLAYEV SAM SITE B27-2

UR 4656N 03144E

NO SIGNIFICANT CHANGES OBSERVED.

25X1

NIKOLAYEV SAM SITE B35-2

UR 4707N 03155E

NO SIGNIFICANT CHANGES OBSERVED.

25X1

SARY-SHAGAN SAM SITE A26-2

UR 4605N 07331E

THE LAUNCH POSITIONS AND THE CENTRAL GUIDANCE AREA ARE UNOCCUPIED. NO MISSILES OR MISSILE-RELATED EQUIPMENT OBSERVED.

25X1

SARY-SHAGAN SAM SITE B19-2

UR 4548N 07335E

ALL 6 LAUNCH POSITIONS ARE OCCUPIED WITH LAUNCHERS. NO MISSILES OBSERVED. THE CENTRAL GUIDANCE AREA IS OCCUPIED.

25X1

**TOP SECRET**

25X1

25X1

25X1

**TOP SECRET**

25X1

MISSION 4027 20-25 APR 1966

YOSHKAR-OLA SAM SUPPORT FACILITY

UR 5639N 04759E

NO COMOR

CONSTRUCTION OF UNDETERMINED NATURE OBSERVED JUST WEST OF FACILITY. ONE SIDE OF A REVETMENT AND SCARRING FOR 2 OTHER SIDES ARE VISIBLE. A T-SHAPED ROAD EXTENDING FROM THE SUPPORT FACILITY TO THIS AREA IS EVIDENT. THIS NEW CONSTRUCTION COULD BE A PROBABLE LARGE REVETMENT UNDER CONSTRUCTION SIMILAR TO THOSE NOW IN EXISTENCE AT UKRAINA/GORKI.

25X1

**TOP SECRET**

9

25X1

25X1

**Air  
Facilities**

**TOP SECRET**

MISSION 4027 20-25 APR 1966

25X1

25X1

AIR FACILITIES

BORZYA AIRFIELD: NORTHWEST

UR 5024N 11623E

NO NEW CONSTRUCTION OR CHANGES IN FACILITIES OBSERVED.  
NO NUCLEAR OR MISSILE FACILITIES OBSERVED. WEST END OF  
E/W RUNWAY IS CLOUD COVERED.

OB -- NONE OBSERVED.

25X1

25X1

STRYY AIRFIELD

UR 4914N 02348E

NO NEW CONSTRUCTION OR CHANGES IN FACILITIES. NO ASM  
FACILITIES OBSERVED.

OB -- 31 BADGER, 11 FLASHLIGHT, 15 FISHPOT, 9  
FAGOT/FRESCO, 1 COLT, AND 1 CREEK.

25X1

25X2

BELAYA AIRFIELD

UR 5254N 10335E

ONLY THE NORTH END OF THE FIELD IS VISIBLE THROUGH  
HEAVY HAZE. NO NEW CONSTRUCTION, CHANGES IN  
FACILITIES, OR NUCLEAR AND MISSILE STORAGE AREAS  
OBSERVED.

OB -- 1 LIGHT STRAIGHT-WING, 4 PROBABLE BADGER, AND 10  
POSSIBLE BADGER.

25X1

10

**TOP SECRET**

25X1

25X1

**TOP SECRET**

MISSION 4027 20-25 APR 1966

25X1

25X1

WEN-TENG AIRFIELD

CH 3711N 12213E

NO NEW CONSTRUCTION OR CHANGES IN FACILITIES.

OB -- NONE OBSERVED.

[Redacted]

25X1

25X1

KRASNY KUT AIRFIELD

UR 4431N 13250E

NO NEW CONSTRUCTION OR CHANGES IN FACILITIES.

OB -- NONE OBSERVED.

[Redacted]

25X1

ABU SUWAYR AIRFIELD

EG 3034N 03206E

NO NEW CONSTRUCTION OR CHANGES IN FACILITIES. THE FIELD IS SECURED BY A PERIMETER FENCE WITH 25 GUARD TOWERS EQUALLY SPACED ALONG THE FENCE.

OB -- 37 BEAGLE AND 5 FAGOT/FRESCO.

[Redacted]

25X1

RAWDAH AIRFIELD

YE 1538N 04412E

NO CHANGE IN FACILITIES OBSERVED.

OB -- 13 FAGOT/FRESCO AND 2 COOT.

[Redacted]

25X1

TIAZ AIRFIELD

SY 3431N 03738E

NO APPARENT CHANGE IN FACILITIES

[Redacted]

[Redacted]

OB -- NONE OBSERVED.

[Redacted]

25X1

25X1

25X1

**TOP SECRET**

[Redacted]

[Redacted]

25X1

25X1



**TOP SECRET**

25X1

25X1

MISSION 4027 20-25 APR 1966

HAMAH AIRFIELD

SY 3506N 03642E

25X1

NO NEW CONSTRUCTION OR CHANGES IN FACILITIES OBSERVED.

OB -- 7 FAGOT/FRESCO, 9 SMALL STRAIGHT-WING, AND 1 UNIDENTIFIED FUSELAGE.

25X1

KHAMIS MUSHAYT AIRFIELD

SR 1818N 04248E

NO NEW CONSTRUCTION OR CHANGES IN FACILITIES OBSERVED.

OB -- NONE OBSERVED.

25X1

OSINOVKA AIRFIELD

UR 4401N 13213E

2.5 NM NORTH OF OSINOVKA.  
8,000 X 150/195 FT NNE/SSW SERVICEABLE CONCRETE RUNWAY WITH A 1,200-FT GRADED-EARTH OVERRUN ON THE SSW END.

OB -- 9 BEAGLE, 26 FISHBED, AND 2 FAGOT/FRESCO ON MAIN PARKING APRON, 2 FISHBED IN MAINTENANCE AREA, AND 6 FISHBED ON NORTH PARKING APRON.

25X1

SARY-SHAGAN AIRFIELD SOUTHWEST

UR 4556N 07327E

NO NEW CONSTRUCTION OR CHANGES IN FACILITIES OBSERVED.

OB -- 1 BADGER AND 2 BEAGLE.

25X1

PETROPAVLOVSK/OZERO KHALAKTYRKA SEAPLANE UR 5302N 15848E

NO NEW CONSTRUCTION OR CHANGES IN FACILITIES OBSERVED.

OB -- AT SEAPLANE STATION -- NONE OBSERVED. AT PETROPAVLOVSK/OZERO KHALAKTYRKA AIRFIELD -- 10 COLT, 10 HOUND, 2 HOUND WITHOUT ROTORS, AND 3 HARE.

25X1

25X1

8 SMALL STRAIGHT-WING AND 8 HELICOPTERS.

**TOP SECRET**

25X1

25X1

**TOP SECRET**

25X1

25X1

MISSION 4027 20-25 APR 1966

25X1

KLYUCHEVOYE AIRFIELD

UR 6027N 02845E

25X1

FIELD IS EQUIPPED WITH GCA AND ILS.

OB -- NONE OBSERVED.

25X1

KHABAROVSK/BLAGODATNOYE AIRFIELD

UR 4824N 13525E

NO NEW CHANGES IN FACILITIES.

OB -- 8 FISHPOT, 7 PROBABLE FISHPOT, AND 7 FAGOT/FRESCO.

25X1

ROSTOV AIRFIELD NORTHWEST

UR 4716N 03938E

NO ADDITIONAL ELECTRONIC OR COMMUNICATIONS FACILITIES OBSERVED SINCE

25X1

OB -- 12 FLASHLIGHT, 28 FRESCO, 3 FAGOT, 1 CAMP, 2 CRATE, 3 CAB, 1 COLT, 3 CREEK, 1 HOUND, AND 1 SMALL STRAIGHT-WING. APPROXIMATELY 900 SHIPPING CRATES 20 X ARE SCATTERED AROUND THE FIELD.

25X1

25X1

KHANSKAYA AIRFIELD

UR 4440N 04002E

NO NEW CONSTRUCTION OR CHANGES IN FACILITIES OBSERVED.

OB -- 131 FAGOT/FRESCO (7 WITH TAIL ASSEMBLY REMOVED).

25X1

MAKHARADZE AIRFIELD

UR 4156N 04153E

THE FIELD IS EQUIPPED WITH ILS AND GCA

25X1

25X1

**TOP SECRET**

**TOP SECRET**

25X1

25X1

MISSION 4027 20-25 APR 1966

OB -- 40 FARMER, 7 FAGOT, AND 2 PROBABLE COLT, AND 476 UNIDENTIFIED SHIPPING CRATES APPROXIMATELY 20 FT LONG AND 10 FT WIDE DISPERSED AROUND THE FIELD.

25X1

**MUKACHEVO AIRFIELD**

UR 4824N 02242E

25X1

NO NEW CONSTRUCTION OBSERVED.

OB -- 1 BEAGLE, 35 FISHBED, 5 FAGOT/FRESCO, 7 MANDRAKE, AND 1 HOUND.

25X1

**VYBORG AIRFIELD EAST**

UR 6040N 02910E

FIELD IS EQUIPPED WITH ILS, GCA, AND AIR WARNING RADAR SITE.

OB -- AT LEAST 24 PROBABLE SMALL SWEEP-WING.

25X1

**DEBRECEN AIRFIELD**

HU 4730N 02137E

NO NEW CONSTRUCTION OR CHANGES OBSERVED.

OB -- 66 BEAGLE AND 4 CAB.

25X1

**GALENKI AIRFIELD NORTHEAST**

UR 4407N 13148E

AIRFIELD IS EQUIPPED WITH BOTH ILS AND GCA. AN AIR WARNING FACILITY IS LOCATED APPROXIMATELY 3,000 FT NW OF THE CENTER OF THE RUNWAY.

OB -- 39 FISHBED, 34 FRESCO, 5 FAGOT, 1 COLT, AND 1 CREEK.

25X1

**TOP SECRET**

25X1

25X1

**TOP SECRET**

MISSION 4027 20-25 APR 1966

VOSKRESENKA AIRFIELD

UR 4434N 13243E

FIELD IS EQUIPPED WITH BOTH ILS AND GCA.

OB -- 16 FAGOT/FRESCO.

[Redacted]

ROSTOV AIRFIELD EAST

UR 4715N 03948E

NO CHANGES IN FACILITIES SINCE [Redacted]

OB -- 1 COOKPOT, 1 COOT, 1 CAT/CUB, AND 1 COLT.

[Redacted]

YAROSLAVL/TUNOSHNA AIRFIELD

UR 5733N 04009E

NO ELECTRONIC OR COMMUNICATION FACILITIES OBSERVED.

OB -- 20 POSSIBLE FISHPOT, 9 FAGOT/FRESCO, AND 2 CAB.

[Redacted]

KUPINO AIRFIELD

UR 5421N 07722E

NO NEW CONSTRUCTION OR CHANGES IN FACILITIES OBSERVED.

OB -- 9 BEAGLE, 24 FISHPOT, AND 15 FAGOT/FRESCO.

[Redacted]

KLIN AIRFIELD

UR 5621N 03644E

NO NEW CONSTRUCTION OBSERVED.

OB -- 4 FIREBAR/BREWER-TYPE, 10 FISHPOT, 8 FARMER, 24 FAGOT/FRESCO, 1 CAT/CUB, 6 CAMP, 4 COOKPOT, 2 COKE, 16 CRATE, 3 CAB, AND 3 COLT.

[Redacted]

**TOP SECRET**

TOP SECRET

25X1

25X1

MISSION 4027 20-25 APR 1966

YOSHKAR-OLA AIRFIELD

UR 5639N 04802E

25X1

NO NEW CONSTRUCTION OR CHANGES OBSERVED.

OB -- 16 FIREBAR/BREWER-TYPE, 25 FAGOT/FRESCO, AND 1 SMALL STRAIGHT-WING.

25X1

ORENBURG AIRFIELD SOUTHWEST

UR 5143N 05504E

NO NEW CONSTRUCTION OR CHANGES IN FACILITIES OBSERVED THROUGH SCATTERED CLOUDS.

OB -- 29 MASCOT/BEAGLE, AT LEAST 43 MAYA, 3 CAB, 1 SMALL STRAIGHT-WING, 1 DERELICT LIGHT STRAIGHT-WING, AND 8 POSSIBLE SHIPPING CRATES.

25X1

TITU/BOTENI AIRFIELD

RU 4438N 02535E

NO CHANGE IN FACILITIES. NORTHEAST END OF AIRFIELD OBSERVED.

OB -- NONE OBSERVED.

25X1

DOMBAROVSKIY AIRFIELD

UR 5049N 05930E

NO NEW CONSTRUCTION OBSERVED.

OB -- 21 FISHPOT, 8 FAGOT/FRESCO, 1 COLT, AND 1 HOUND.

25X1

ROSTOV AIRCRAFT ASSEMBLY PLANT 168

UR 4716N 03944E

NO COMOR

THE LARGE BUILDING UNDER CONSTRUCTION JUST EAST OF THE HELICOPTER PADS APPEARS TO BE A PART OF THE ASSEMBLY PLANT. IT WAS PREVIOUSLY REPORTED AS PROBABLY NOT CONNECTED TO THE ASSEMBLY PLANT ON

THE BUILDING IS APPROXIMATELY 50 PERCENT COMPLETE. NO OTHER CHANGES OBSERVED.

25X1

25X1

25X1

25X1

TOP SECRET



**TOP SECRET**



25X1

25X1

MISSION 4027 20-25 APR 1966

OB -- 10 HOOK.



25X1

•  
•

•  
•

**TOP SECRET**



25X1

25X1

**Nuclear  
Energy**

**Page Denied**



**Electronics/  
Communications**

**TOP SECRET**

25x1

25x1

MISSION 4027 20-25 APR 1966

ELECTRONICS/COMMUNICATIONS

BOLOTNOYE VLF COMMUNICATIONS FACILITY UR 5545N 08426E

25x1

NO CHANGE OBSERVED SINCE

25x1

25x1

PETROZAVODSK PROB HF COMMUNICATIONS FAC UR 6152N 03412E

NO APPARENT CHANGE IN FACILITIES SINCE

25x1

25x1

TYURATAM INSTRUMENTATION SITE UR 4839N 06114E

1.5 NM NW OF IRGIZ.  
UNIDENTIFIED FACILITY CONTAINING 4 BUILDINGS CAN BE  
IDENTIFIED ONLY. NO INSTRUMENTATION SITE OBSERVED IN  
CLOUD-FREE AREAS.

25x1

BAYKONUR POSS ELECTRONICS FACILITY UR 4721N 06520E

NO SIGNIFICANT CHANGE IN FACILITIES OR NEW EQUIPMENT  
OBSERVED.

25x1

DALNYAYA TALL KING-AW RADAR FACILITY UR 4553N 14205E

NO SIGNIFICANT CHANGES OBSERVED.

25x1

INYA TALL KING FACILITY UR 5923N 14451E

1 NM SE OF INYA.  
FACILITY CONSISTS OF A TALL KING ANTENNA, AN ANTENNA  
BUILDING, A SUPPORT BUILDING, A GENERATOR BUILDING, AND

25x1

25x1

**TOP SECRET**

**TOP SECRET**

25X1

25X1

MISSION 4027 20-25 APR 1966

PROBABLE FUEL STORAGE. SUPPORT AREA IMMEDIATELY EAST CONTAINS AT LEAST 1 PROBABLE RADAR.

25X1

SARY-SHAGAN TALL KING-AD HQ FACILITY UR 4604N 07330E

25X1

NO APPARENT CHANGE IN THE TALL KING FACILITY. THE PREVIOUSLY REPORTED AIR WARNING RADAR FACILITY AT THE AIRFIELD OBSERVED ON [REDACTED] CONSISTS OF 2 PROBABLE BARLOCK, 1 PROBABLE BIG MESH, AND 2 PROBABLE ROCKCAKE/STONECAKE.

25X1

25X1

UGOLNYY DUAL TALL KING-AD HEADQUARTERS FAC UR 6438N 17801E

NO APPARENT CHANGE IN FACILITIES [REDACTED]

25X1

25X1

ELISENVAARA RADAR TRACKING FACILITY UR 6123N 02947E

IDENTIFICATION ONLY.

25X1

SARY-SHAGAN INSTRUMENTATION SITE 2 UR 4548N 07335E

INSTRUMENTATION SITE 2 IS COVERED ON PHOTOGRAPHY OF FAIR INTERPRETABILITY AND IS THE FIRST LARGE SCALE PHOTOGRAPHY OF THE SITE SINCE [REDACTED]

25X1

NO RECENT SIGNIFICANT CHANGE IS OBSERVED IN THE SUPPORT AREA WHICH INCLUDES APPROXIMATELY 30 BUILDINGS, PRIMARILY BARRACKS AND WAREHOUSES, A WATER STANDPIPE, AND A STEAMPLANT.

THE 3 PRIMARY TRIAD BUILDINGS CAN BE CONFIRMED AS EXTERNALLY COMPLETE WITH NO DISH MOUNTED ON THE ROOF OF ANY OF THE 3 FLAT-ROOFED BUILDINGS. ON THE ROOF OF

20

**TOP SECRET**

25X1

25X1

**TOP SECRET**

MISSION 4027 20-25 APR 1966

25x1

25X1

TRIAD BUILDING A IS A PEDESTAL OR PLATFORM [REDACTED] WITH 2 SMALL UNIDENTIFIED OBJECTS ON IT. ON THE ROOF OF EACH OF THE SMALL TRIAD BUILDINGS IS WHAT APPEARS TO BE AN ACCESSWAY. TRIAD BUILDING A MEASURES 235 X 140 X 40 FT. TRIAD BUILDINGS B AND C EACH MEASURE APPROXIMATELY 105 X 100 [REDACTED] TRIAD BUILDING D, PARALLELING TRIAD BUILDING A 40 FT TO THE SOUTH, IS APPROXIMATELY 130 X 25 [REDACTED] APPARENT OPENINGS CAN BE SEEN ALONG THE ENTIRE WIDTH OF THE SOUTH SIDE OF THIS BUILDING. JUST EAST OF BUILDING D IS A BURIED TANK, APPROXIMATELY 35 FT IN DIAMETER, AND A PROBABLE COOLING UNIT (40 X 15 FT). A GROUP OF 4 SMALL CIRCULAR EXCAVATIONS ARRANGED IN A SQUARE PATTERN CAN BE IDENTIFIED 2,535 FT NNW OF TRIAD BUILDING B. A CABLE SCAR EXTENDS FROM THESE EXCAVATIONS TO A POINT JUST SHORT OF BUILDING B. THESE EXCAVATIONS, PROBABLY TO BE USED FOR A TOWER BASE, HAVE BEEN PRESENT SINCE AT LEAST [REDACTED] BUT WERE NOT IDENTIFIABLE. A CABLE SCAR WHICH APPEARED FROM [REDACTED] [REDACTED] EXTENDS FROM A POINT CLOSE TO TRIAD BUILDING C, 2,845 FT TO THE SW.

25X1

25X1

25X1

25X1

25X1

25X1

THE MODIFIED L-SHAPED BUILDING AND THE OUTRIGGER PATTERN PRESENT IN [REDACTED] DO NOT APPEAR TO HAVE CHANGED. AT THE NE OUTRIGGER, A SEMIBURIED BUILDING [REDACTED] AND A PROBABLE TANK (20 FT IN DIAMETER) CAN BE IDENTIFIED. AT THE SE OUTRIGGER ARE A SEMIBURIED BUILDING (65 X 50 FT) AND A SMALL APRON (30 X 30 FT) WITH A RING 15 FT IN DIAMETER ON THE ROOF. THE TOKEN-TYPE RADAR OBSERVED IN [REDACTED] JUST WEST OF THE MODIFIED L-SHAPED BUILDING IS NOT PRESENT. THE DATE THE EQUIPMENT WAS REMOVED CANNOT BE DEFINITELY DETERMINED FROM SMALL SCALE COVERAGE.

25X1

25X1

25X1

CONNECTED WITH THE MODIFIED L-SHAPED BUILDING BY A STRUCTURE APPROXIMATELY 25 FT LONG IS A BUILDING (145 X 145 [REDACTED] WHICH WAS FIRST OBSERVED UNDER CONSTRUCTION ON [REDACTED] THE SAME TIME AS THE TRIAD. THE DOME WHICH APPEARED ON THE ROOF OF THIS BUILDING BETWEEN [REDACTED] IS 120 FT IN DIAMETER. THE BUILDING PARALLELING THIS BUILDING TO THE NORTH IS 135 X 30 X 20 FT. A PROBABLE COOLING TOWER AND TANK ARE ADJACENT TO THE NE. FOUR SMALL CIRCULAR EXCAVATIONS ARRANGED IN A SQUARE PATTERN, PROBABLY FOR A TOWER BASE, CAN BE CONFIRMED 790 FT NNW OF THE BUILDING WITH THE DOME. THESE EXCAVATIONS HAVE BEEN PRESENT SINCE AT LEAST [REDACTED] A SELF-SUPPORTING, LATTICE-TYPE PROBABLE CALIBRATION TOWER, OBSERVED UNDER CONSTRUCTION ON [REDACTED] 8,085 FT NNW OF

25X1

25X1

25X1

25X1

25X1

**TOP SECRET**

25X1

25X1

**TOP SECRET**

MISSION 4027 20-25 APR 1966

25X1

25X1

THE BUILDING WITH THE DOME, IS APPROXIMATELY 280 FT HIGH. A SUPPORT BUILDING, [REDACTED] IS ADJACENT TO THE TOWER.

25X1

THE UNIDENTIFIED FACILITY, UNDER CONSTRUCTION 2,545 FT NORTH OF THIS TOWER SINCE [REDACTED] CONTAINS CERTAIN STRUCTURES WHICH WOULD SUGGEST A STORAGE AND CHECKOUT FUNCTION. FACILITIES INCLUDE A PROBABLE STEAMPLANT, A REVETTED STORAGE BUILDING (80 X 30 FT), A PROBABLE TANK, AN APRON (160 X 100 FT), AND 10 BUILDINGS WHICH APPEAR TO BE PRINCIPALLY STORAGE AND CHECKOUT-TYPE. OF THE 6 LARGEST BUILDINGS, THE LARGEST MEASURES 135 X 35 FT, TWO ARE 80 X 60 FT, ONE IS 70 X 40 FT, ONE IS 80 X 40 FT, AND ONE IS 60 X 30 FT.

25X1

A PROBABLE WATERLINE, OBSERVED UNDER CONSTRUCTION ON [REDACTED] EXTENDS FROM THIS FACILITY TO A PROBABLE TANK AT INSTRUMENTATION SITE 2.

25X1

[REDACTED] INSTALLATION, OBSERVED UNDER CONSTRUCTION AT THE TERMINUS OF THE ROAD EXTENDING APPROXIMATELY 7 NM SW FROM THIS FACILITY, IS NOT COVERED ON THIS MISSION.

25X1

(SEE ATTACHMENT)

[REDACTED]

25X1

SARY-SHAGAN INSTRUMENTATION SITE 4

UR 4557N 07213E

25X1

HAZE LIMITS INTERPRETATION. NO SIGNIFICANT CHANGE OBSERVED [REDACTED]

25X1

[REDACTED]

25X1

VYBORG DUAL TALL KING-AW RADAR FACILITY

UR 6044N 02836E

APPROXIMATELY 5.5 NM WNW OF VYBORG. DOUBLY SECURED FACILITY CONSISTS OF 2 TALL KING ANTENNAS, 6 RADAR MOUNDS (AT LEAST 1 OF WHICH IS OCCUPIED), A LARGE CENTRAL CONTROL BUNKER, 2 PROBABLE HARDSTANDS, AND AT LEAST 5 SMALL SUPPORT BUILDINGS.

25X1

[REDACTED]

**TOP SECRET**

25X1

25X1

**TOP SECRET**

MISSION 4027 20-25 APR 1966

25X1

25X1

**BRATSK HF COMMUNICATIONS FACILITY**

UR 5641N 10119E

THE FACILITY HAS BEEN CONSTRUCTED IN 2 CLEARINGS IN A WOODED AREA. THE LARGER CLEARING CONTAINS 10 BUILDINGS, 3 SELF-SUPPORTING TOWERS, AND 3 SLENDER PROBABLE GUYED TOWERS. THESE TOWERS DO NOT COMPRISE A PROBABLE CURTAIN ARRAY AS PREVIOUSLY REPORTED ON [REDACTED] A SMALLER CLEARING LOCATED APPROXIMATELY 0.5 NM FROM THE LARGER CLEARING CONTAINS 2 SMALL BUILDINGS AND A TALL GUYED MICROWAVE TOWER.

25X1

25X1

25X1

**WU-LU-MU-CHI COMMUNICATIONS FACILITY**

CH 4407N 08649E

FACILITY CONTAINS 3 BROADCAST ARRAYS, 2 CONSISTING OF 8 VERTICAL TOWERS (4 ACTIVE) AND 1 CONSISTING OF 4 VERTICAL TOWERS (2 ACTIVE). ONE LARGE TRANSMITTING BUILDING IS LOCATED NEAR THE CENTER OF THE SECURED FACILITY WITH 2 COOLING PONDS LOCATED JUST TO THE REAR. APPROXIMATELY 21 SUPPORT BUILDINGS AND 1 MASTER TOWER ARE LOCATED WITHIN THE SECURED FACILITY.

25X1

**SHAN-TOU RADAR SITE**

CH 2323N 11643E

NO COMOR

OB -- 1 MOON CONE RADAR.

25X1

**LU-HSI RADAR SITE**

CH 2424N 09831E

NO COMOR

OB -- 1 PROBABLE SCR-270 RADAR.

25X1

**TASHKENT HF COMMUNICATIONS FACILITY**

UR 4120N 06924E

BONUS 1

6.5 NM ENE OF TASHKENT. SECURED COMMUNICATIONS FACILITY CONTAINS AT LEAST FOUR 5-3-3-5 FISHBONE RECEIVING ANTENNAS AND A CENTRAL SUPPORT BUILDING. SEVERAL SUPPORT BUILDINGS AND NUMEROUS MASTS SURROUND THE CENTRAL CONTROL BUILDING. THE COMMUNICATIONS AREA IS ADJACENT TO A SAM SUPPORT

**TOP SECRET**

25X1

25X1

**Page Denied**

**Military  
Activity**



TOP SECRET

25x1

25X1

MISSION 4027 20-25 APR 1966

MILITARY ACTIVITY

LOVECH ARMY BARRACKS 1

BU 4308N 02442E

25X1

AREA IS OCCUPIED AND ALL PORTIONS APPEAR TO BE ACTIVE. NO ARMOR OBSERVED.

OB -- 90 CARGO TRUCKS.

25X1

CHUAN-CHOU BARRACKS NORTH

CH 2500N 11836E

NO NEW CONSTRUCTION, CHANGES IN FACILITIES, OR FEATURES NOT PREVIOUSLY REPORTED. NO TANKS, ARMORED EQUIPMENT, WEAPONS, OR VEHICLES OBSERVED. A NORMAL LEVEL OF ACTIVITY OBSERVED.

25X1

YING-SHAN ARMY BARRACKS AREA

CH 3137N 11351E

NO NEW CONSTRUCTION, CHANGES IN FACILITIES, OR FEATURES NOT PREVIOUSLY OBSERVED. NO VEHICLES, WEAPONS, OR EQUIPMENT OBSERVED. DUE TO PARTIAL COVERAGE, SECURITY, DEFENSES, EVIDENCE OF TROOP BUILDUP, STOCKPILING OF MATERIALS, OR UNUSUAL ACTIVITY IS UNDETERMINED.

25X1

CHELMNO ARMY BARRACKS 1

PO 5320N 01826E

AREA APPEARS OCCUPIED. ALL AREAS ARE ACTIVE. NO TANKS OBSERVED.

25X1

GRUDZIADZ ARMY BARRACKS SOUTH

PO 5328N 01845E

INSTALLATION ON EDGE OF GRUDZIADZ CONTAINS 6 BARRACKS, 1 ADMINISTRATION BUILDING/BARRACKS, 1 POSSIBLE BARRACKS, 5 STORAGE BUILDINGS, 4 VEHICLE STORAGE SHEDS, A VEHICLE MAINTENANCE BUILDING, A MOTOR PARK, A SEPARATELY SECURED STORAGE AREA WITH 10 EARTH-MOUNDED PROBABLE EXPLOSIVES STORAGE BUNKERS, 5 SUPPORT

25X1

25X1

TOP SECRET

25X1

**TOP SECRET**

25X1

MISSION 4027 20-25 APR 1966

BUILDINGS, AN OBSTACLE COURSE, AN ATHLETIC FIELD, AND A SMALL TRAINING AREA.

A SMALL SECURED AREA 1 NM SOUTH CONTAINS A POSSIBLE MAINTENANCE BUILDING AND 5 UNIDENTIFIED SUPPORT BUILDINGS. AN EARTH-MOUNDED BUNKER IS JUST OUTSIDE OF THE SECURED AREA.

OB -- 15 CARGO TRUCKS AND 90 UNIDENTIFIED VEHICLES/PIECES OF EQUIPMENT.

25X1

ANADYR ARMY BARRACKS LENINKA AL 2

UR 6444N 17741E

25X1

NO NEW CONSTRUCTION, CHANGE IN FACILITIES, OR FEATURES NOT PREVIOUSLY REPORTED.

OB -- AT LEAST 150 UNIDENTIFIED VEHICLES.

25X1

BLAGOVESHCHENSKOYE ARMY BARRACKS AL 1

UR 4645N 14230E

NO CHANGES IN FACILITIES. NO VEHICLES OR EQUIPMENT OBSERVED.

25X1

PETROPAVLOVSKOYE ARMY BARRACKS AL 1

UR 4647N 14230E

AREA APPEARS OCCUPIED WITH ALL PORTIONS IN USE. NO TANKS OBSERVED.

25X1

KERKI ARMY BARRACKS

UR 3749N 06512E

AREA IS OCCUPIED.

OB -- 7 POSSIBLE TANKS/SP GUNS AND 13 CARGO TRUCKS.

25X1

**TOP SECRET**

25X1

25X1

25X1

**TOP SECRET**

25X1

MISSION 4027 20-25 APR 1966

NIKOLAYEV ARMY BKS AL 5 & TRNG AREA II N UR 4703N 03159E

25X1

INSTALLATION CONTAINS 4 BARRACKS, 10 QUARTERS, 3 ADMINISTRATION BUILDINGS/BARRACKS, 3 ADMINISTRATION BUILDINGS, 2 VEHICLE MAINTENANCE SHEDS (1 MONITOR ROOFED), 7 VEHICLE STORAGE SHEDS, 17 STORAGE BUILDINGS, 25 SUPPORT BUILDINGS, 1 SMALL-ARMS FIRING RANGE, AND 1 ATHLETIC FIELD.

A TRAINING AREA NNE CONTAINS 1 TANK/ASSAULT-GUN FIRING RANGE WITH 8 TANK LANES AND MOVING TARGET RUNS, 1 SUBCALIBER FIRING RANGE WITH 3 RUNS, AND 1 MOVING-TARGET FIRING RANGE.

OB -- 16 PROBABLE TANKS/SP GUNS, 18 POSSIBLE FA PIECES, AND 62 PROBABLE CARGO TRUCKS.

25X1

TASHKENT ARMY BARRACKS SOUTHWEST UR 4115N 06912E

NO NEW CONSTRUCTION, CHANGE IN FACILITIES, OR FEATURES NOT PREVIOUSLY REPORTED.

OB -- APPROXIMATELY 15 PRIME TRACKED MOVERS, 85 CARGO TRUCKS, 12 POSSIBLE UTILITY TRAILERS, 1 POSSIBLE TRUCK-MOUNTED CRANE, AND 55 UNIDENTIFIED VEHICLES/PIECES OF EQUIPMENT.

25X1

TASHKENT ARMY SUPPLY DEPOT SKLAD 28 UR 4116N 06918E

NO NEW CONSTRUCTION, CHANGES IN FACILITIES, OR FEATURES NOT PREVIOUSLY REPORTED. NO ARMOR OBSERVED.

OB -- 1 CRANE-SHOVEL AND 8 UNIDENTIFIED VEHICLES/PIECES OF EQUIPMENT.

25X1

TASHKENT ORDNANCE DEPOT AND BKS URTA-AUL UR 4111N 06908E

NO CHANGE IN FACILITIES.

OB -- AT LEAST 9 PROBABLE FA PIECES, 4 POSSIBLE AAA

25X1

25X1

**TOP SECRET**

**TOP SECRET**

25X1  
25X1

MISSION 4027 20-25 APR 1966

PIECES, 6 PRIME MOVERS, 29 CARGO TRUCKS, AND 10 UNIDENTIFIED VEHICLES/PIECES OF EQUIPMENT.

25X1

YUZHNO-SAKHALINSK ARMY BKS NORTHEAST AL 1 UR 4659N 14245E

25X1

ON NE EDGE OF YUZHNO-SAKHALINSK. INSTALLATION CONTAINS 3 BARRACKS, 1 BARRACKS/ADMINISTRATION BUILDING, 9 QUARTERS/BARRACKS, 6 VEHICLE STORAGE/MAINTENANCE BUILDINGS, 4 VEHICLE STORAGE BUILDINGS, 6 STORAGE BUILDINGS, AND 22 SUPPORT BUILDINGS.

OB -- 30 AMPHIBIOUS VEHICLES, 35 CARGO TRUCKS, AND 47 UNIDENTIFIED VEHICLES.

25X1

YUZHNO-SAKHALINSK ARMY SUP DPO 1 PUG UR 4658N 14244E

NO APPARENT CHANGES IN FACILITIES, NEW CONSTRUCTION, FEATURES NOT PREVIOUSLY REPORTED, OR ARMOR OBSERVED. NUMEROUS PIECES OF UNIDENTIFIED EQUIPMENT OBSERVED SCATTERED THROUGHOUT THE AREA.

25X1

YUZHNO-SAKHALINSK ARMY SUP DPO 2 PUG UR 4657N 14243E

NO NEW CONSTRUCTION OR CHANGES IN FACILITIES. NO TANKS, ARMORED EQUIPMENT, WEAPONS, OR VEHICLES OBSERVED. NO MILITARY ACTIVITY OBSERVED.

25X1

LISTVENICHNOYE ARMY BARRACKS AL 1 UR 4652N 14246E

NO NEW CONSTRUCTION, CHANGES IN FACILITIES, OR FEATURES NOT PREVIOUSLY REPORTED. NORTHERN 90 PERCENT OF AREA IS COVERED.

OB -- 15 PROBABLE TRUCKS.

25X1

**TOP SECRET**

25X1  
25X1

**TOP SECRET**

25X1

25X1

MISSION 4027 20-25 APR 1966

CHANG-CHIH PROBABLE MILITARY BARRACKS CH 3612N 11306E

IDENTIFICATION ONLY.

[Redacted]

25X1

25X1

LO-YANG ARMY SCHOOL AND BARRACKS WEST CH 3440N 11220E

NO CHANGES IN FACILITIES OR FEATURES NOT PREVIOUSLY REPORTED. NO TANKS, VEHICLES, WEAPONS, OR PIECES OF EQUIPMENT OBSERVED. LEVEL OF ACTIVITY APPEARS NORMAL.

[Redacted]

25X1

LO-YANG ARMY SCHOOL & BARRACKS SOUTHWEST CH 3436N 11221E

NO NEW CONSTRUCTION, CHANGES IN FACILITIES, OR FEATURES NOT PREVIOUSLY REPORTED. NO TANKS, ARMORED EQUIPMENT, OR WEAPONS OBSERVED.

OB -- 5 UNIDENTIFIED VEHICLES/PIECES OF EQUIPMENT.

[Redacted]

25X1

KU-ERH-LO POSSIBLE MILITARY CAMP CH 4142N 08608E

NO NEW CONSTRUCTION OR CHANGES IN FACILITIES. NO ARMOR OBSERVED.

OB -- 3 UNIDENTIFIED VEHICLES.

[Redacted]

25X1

CHOYBALSAN MILITARY COMPLEX MG 4804N 11430E

AREA CONSISTS OF 3 PROBABLE BARRACKS AREAS AND 2 EXPLOSIVES STORAGE AREAS IN THE VICINITY OF CHOYBALSAN.

AREA 1 -- PARTIALLY SECURED PROBABLE MILITARY INSTALLATION, ON THE WEST EDGE OF CHOYBALSAN AND ON BOTH SIDES OF THE MAIN ROAD, CONTAINS 4 PROBABLE BARRACKS, 2 PROBABLE ADMINISTRATION BUILDINGS, 21 PROBABLY MILITARY ASSOCIATED STORAGE/SUPPORT BUILDINGS, 4 UNIDENTIFIED BUILDINGS, AND 1 SMALL HEATING PLANT.

**TOP SECRET**

25X1

25X1

25X1

**TOP SECRET**

25X1

MISSION 4027 20-25 APR 1966

AREA 2 -- A PROBABLE MILITARY AREA, 0.5 NM SE OF CHOYBALSAN AIRFIELD, CONTAINS 8 BARRACKS, 1 ADMINISTRATION BUILDING, 3 UNIDENTIFIED BUILDINGS, 2 SECURED AREAS (1 WITH 1 BUILDING AND THE OTHER WITH 3 PROBABLE VEHICLE/EQUIPMENT STORAGE/MAINTENANCE BUILDINGS), AND A HEATING PLANT.

AREA 3 -- A PROBABLE MILITARY AREA, ON THE SW EDGE OF CHOYBALSAN AIRFIELD AND POSSIBLY ASSOCIATED WITH THE AIRFIELD, CONTAINS 6 BARRACKS-TYPE BUILDINGS, 12 BUILDINGS UNDER CONSTRUCTION, AND A LARGE TRENCH RUNNING IN AN EASTERLY DIRECTION.

AREA 4 -- PROBABLY DOUBLY SECURED EXPLOSIVES STORAGE AREA, APPROXIMATELY 2 NM NE OF CHOYBALSAN AIRFIELD, CONTAINS 6 POSSIBLY REVETTED STORAGE BUILDINGS AND 5 FOUNDATIONS OF DISMANTLED BUILDINGS.

AREA 5 -- AT THE LARGE STORAGE AREA, APPROXIMATELY 5 NM NW OF CHOYBALSAN, A RAILROAD SPUR ORIGINALLY SERVING THE AREA HAS BEEN DISMANTLED AND ALL BUT 9 BUILDINGS REMOVED. TRACKAGE INDICATES SOME USE OF THE 9 BUILDINGS.

OB -- 11 CARGO TRUCKS AND 35 VEHICLES/PIECES OF EQUIPMENT.

THE ENTIRE AREA SURROUNDING CHOYBALSAN IS HEAVILY SCARRED WITH VEHICLE REVETMENTS, BIVOUAC AREAS, PERSONNEL TRENCHES, AND FOUNDATIONS OF DISMANTLED BUILDINGS. THE ENTIRE AREA, ALTHOUGH ONCE A LARGE MILITARY COMPLEX, NOW APPEARS TO HAVE A VERY LOW LEVEL OF ACTIVITY.

25X1

TZU-MU-TSUNG MILITARY INSTALLATION      TI 2944N 09415E      NO COMOR

OB -- APPROXIMATELY 120 CARGO TRUCKS OBSERVED.

25X1

CHENG-TU/KUN-MING RAIL LINE      CH 3040N 10404E      NO COMOR

RAIL LINE UNDER CONSTRUCTION OBSERVED FROM KUN-MING (25-01N 102-43E) TO 24-59N 102-23E. CONSTRUCTION ACTIVITY CONTINUES AT A HIGH LEVEL.

**TOP SECRET**

25X1

25X1

25X1



**TOP SECRET**



25X1

**MISSION 4027 20-25 APR 1966**

**ACTIVITY -- 50 CARGO TRUCKS, 22 SCRAPERS, 1 SHOVEL, AND  
8 UNIDENTIFIED VEHICLES.**

25X1



**TOP SECRET**



25X1

25X1

## **Complexes**



**TOP SECRET**

25X1  
25X1

MISSION 4027 20-25 APR 1966

COMPLEXES

TUAPSE COMPLEX

UR 4405N 03905E

NO SIGNIFICANT CHANGES OBSERVED.

[REDACTED]

25X1  
25X1

BARNAUL COMPLEX

UR 5320N 08347E

LARGE FABRICATION BUILDING UNDER CONSTRUCTION ON THE NW EDGE OF THE CITY APPEARS TO BE THE ONLY SIGNIFICANT FACILITY ADDED TO THE COMPLEX.

[REDACTED]

25X1

RYAZAN COMPLEX

UR 5437N 03944E

NO NEW CONSTRUCTION OR CHANGES IN FACILITIES OBSERVED. CENTRAL PART OF COMPLEX IS OBSCURED BY CLOUDS OR CLOUD SHADOW. THE REMAINDER OF COMPLEX IS VISIBLE ON PHOTOGRAPHY OF GOOD INTERPRETABILITY.

[REDACTED]

25X1

SWIECIE POSS CHEMICAL FERTILIZER PLANT

PO 5323N 01822E

NO COMOR

2.5 NM WSW OF SWIECIE. A POSSIBLE CHEMICAL FERTILIZER PLANT UNDER CONSTRUCTION COVERS APPROXIMATELY 1 SQ NM AND IS NEARLY 1.5 NM IN LENGTH. THE PLANT AREA CAN BE DIVIDED INTO 3 MAJOR SECTIONS. THE CENTRAL SECTION CONTAINS A LARGE POWERPLANT, A STORAGE YARD WITH AN OVERHEAD CRANE, 7 LARGE BUILDINGS (3 UNDER CONSTRUCTION), APPROXIMATELY 15 OTHER BUILDINGS (2 UNDER CONSTRUCTION), 6 LARGE STORAGE TANKS (3 UNDER CONSTRUCTION), AND 2 SMALL STORAGE TANKS.

THE NORTH SECTION CONTAINS A VERY LARGE LONG BUILDING UNDER CONSTRUCTION, 4 OTHER LARGE BUILDINGS, A STORAGE YARD WITH AN OVERHEAD CRANE, 18 OTHER BUILDINGS, 6 SMALL STRUCTURES, A LARGE PROBABLE PUMPING STATION WITH A PIPELINE EXTENDING FROM THE WISLA RIVER TO THE STATION, AND 2 LARGE CIRCULAR FILTRATION PONDS OR DEWATERERS. ADJACENT TO THE NORTH SECTION IS A WALLED AREA WITH SEVEN 4-SECTION BUILDINGS, A T-SHAPED

**TOP SECRET**

[REDACTED]

[REDACTED]

25X1  
25X1

**TOP SECRET**

25x1

25x1

MISSION 4027 20-25 APR 1966

BUILDING, AND 4 OTHER BUILDINGS.

THE SOUTH SECTION CONTAINS 1 LARGE BUILDING, 3 OTHER BUILDINGS (2 UNDER CONSTRUCTION), A LARGE AREA OF CONSTRUCTION ACTIVITY NORTH OF THE LARGE BUILDING, 2 LIGHTING TOWERS ADJACENT TO THIS AREA, AND MUCH SCRAPING ACTIVITY. ALL AREAS ARE RAIL SERVED.

A LARGE RECTANGULAR PROBABLE SETTLING BASIN IS UNDER CONSTRUCTION WEST OF THE MAIN PLANT AREA. ALSO TO THE WEST IS A 10-TRACK RAIL YARD APPARENTLY CONSTRUCTED TO SERVE THE COMPLEX. A SMALL STREAM TO THE NORTH IS DAMMED AND A PIPELINE HAS BEEN LAID FROM THE DAM TO THE STORAGE TANK AREA.

(SEE ATTACHMENT)



25x1

NAN-NING POL STORAGE

CH 2250N 10824E BONUS 1

5 NM ENE OF NAN-NING. POL STORAGE AREA CONSISTS OF 5 LARGE TANKS UNDER CONSTRUCTION AND AT LEAST 3 BUILDINGS. THE AREA IS CONNECTED BY A PROBABLE PIPELINE TO A RAIL-SERVED SUPPORT AREA APPROXIMATELY 0.5 NM NE. A SUPPORT AREA CONSISTS OF AT LEAST 10 BUILDINGS. SCRAPING IN BOTH AREAS INDICATES CONTINUING CONSTRUCTION.



25x1

HO-KOU STORAGE AREA

CH 2234N 10354E BONUS 2

5.5 NM NW OF HO-KOU. ROAD-SERVED STORAGE AREA CONSISTS OF 16 STORAGE/SUPPORT BUILDINGS.



25x1

**TOP SECRET**

25x1

25x1

**Other  
Activity**

**Page Denied**

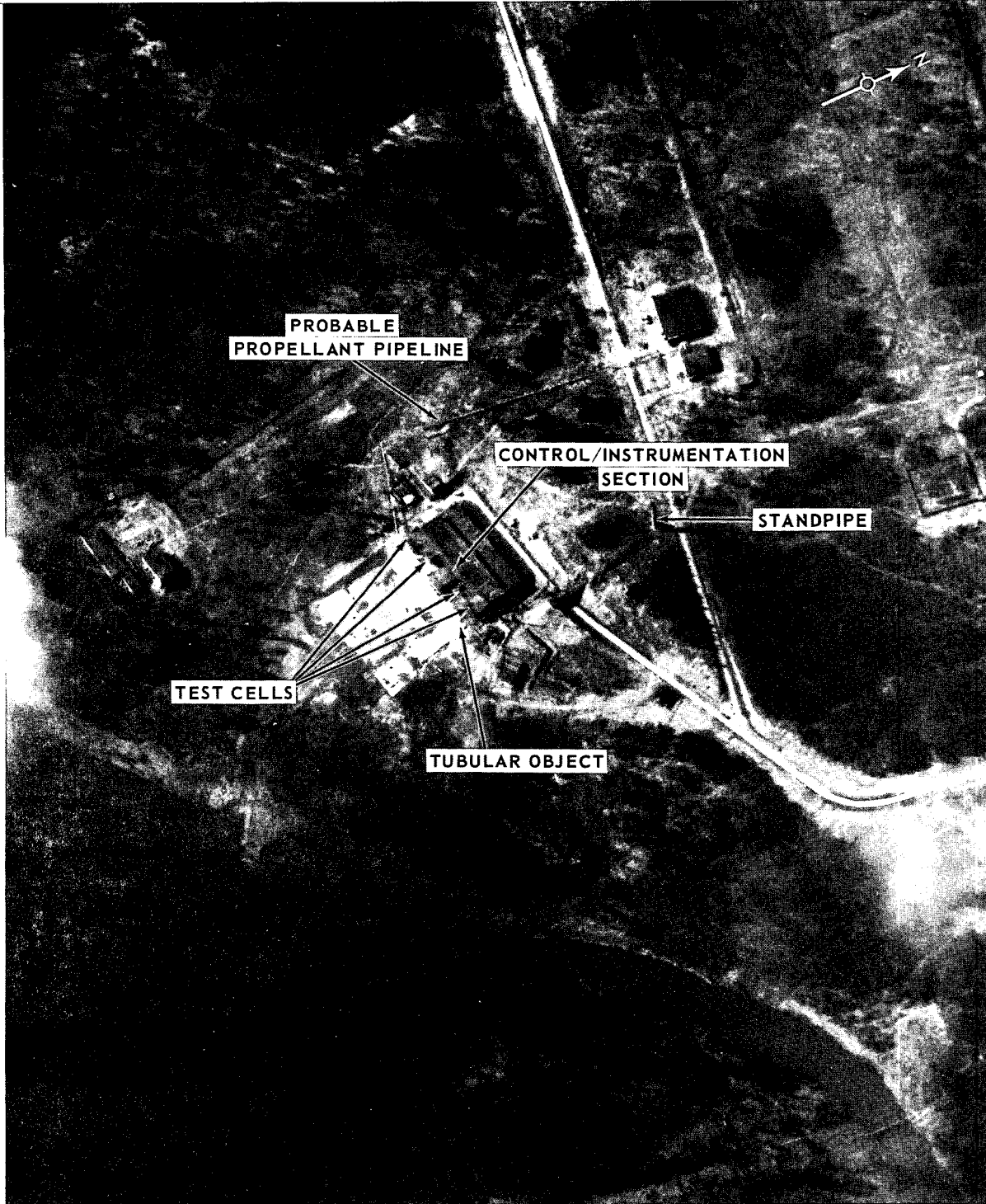
## **Attachments**

**TOP SECRET**

MISSION 4027, 20-25 APRIL 1966

ATTACHMENT 1

25X1



STATIC TEST FACILITY, NIZHNYAYA SALDA, USSR

NPIC K-8160 (5/66)

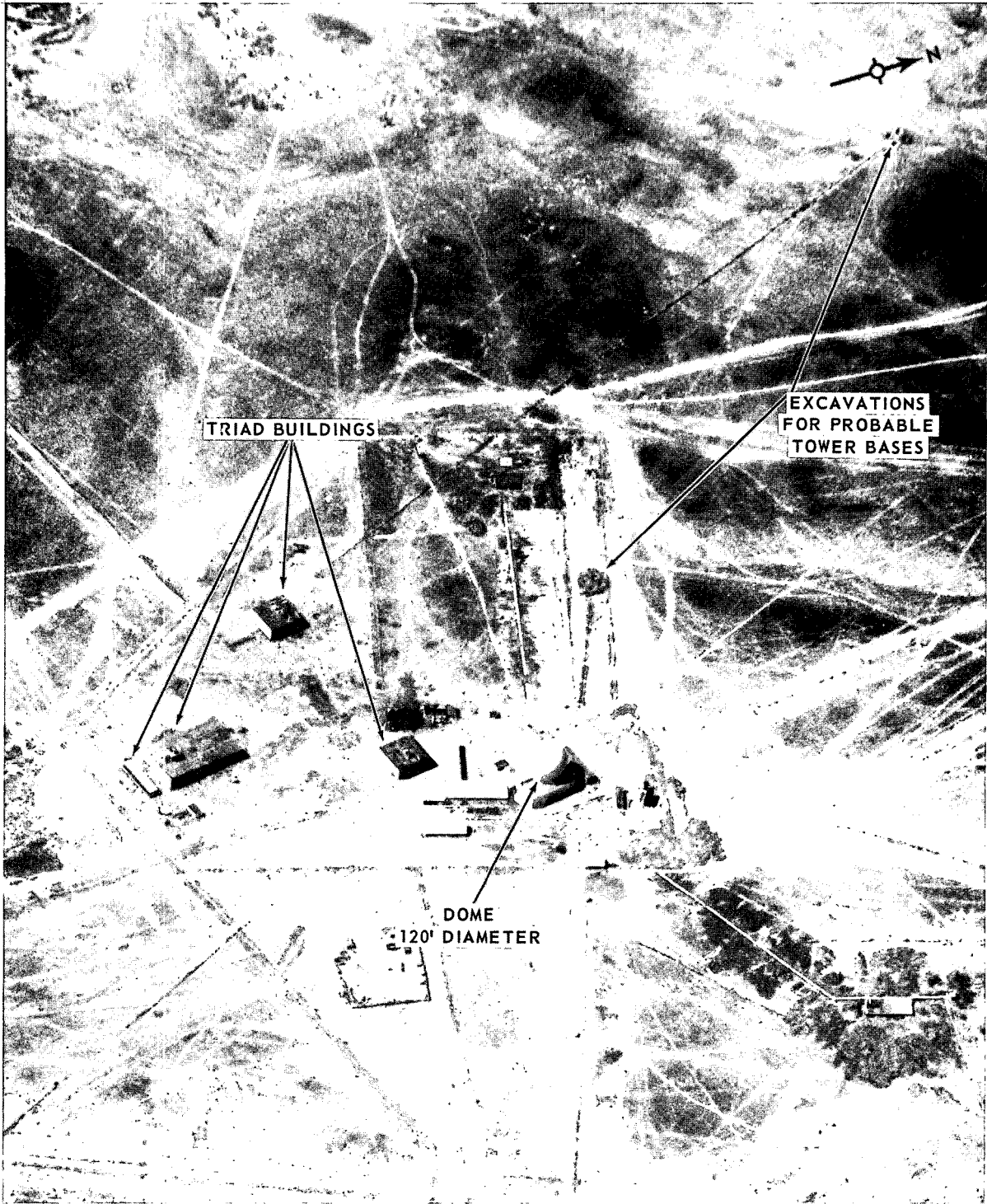
**TOP SECRET**

25X1

**TOP SECRET**

MISSION 4027, 20-25 APRIL 1966

ATTACHMENT 2



INSTRUMENTATION SITE 2, SARY-SHAGAN ANTIMISSILE TEST CENTER, USSR

**TOP SECRET**

**Page Denied**



**TOP SECRET**

**TOP SECRET**