

DUCKBUTT

Duckbutt Special #1

ON station 2200-2400Z

Passage 2300Z

Position 23-11N 151-07E

25 YEAR RE-REVIEW

Duckbutt Special #2

ON station 0000Z-0130Z

Passage 0112Z

Position 25-52N 133-26E

PILOT			DATE			TO			PILOT			DATE			TO .		
GWT	CG		CALL SIGN						GWT	CG		CALL SIGN					
ROTATION IAS			CHASE CS						ROTATION IAS			CHASE CS					
T.O. IAS			TANKER CS						T.O. IAS			TANKER CS					
CK IAS			CH(P)			CH(S)			ABORT IAS			CH(P)			CH(S)		
ABORT IAS			ARCT			ARCP			T.O. ROLL MAX BRAKE NO CHUTE			ARCT			ARCP		
ENG TRIM			ONLOAD						ENG TRIM			ONLOAD					

POS	○	○	○	○	○	○	○	○	POS	○	○	○	○	○	○	○	○
TH									TH								
MH									MH								
DTG									DTG								
LAT									LAT								
LON									LON								
MIN FUEL									MIN FUEL								

REMARKS	REMARKS
---------	---------

DUCK BUTT NOV. ALPHA @ (06)

MORE THAN 1170 FR. (08) = HAMILTON

OCEAN STATIO NOV. @ DTG 1110

BETWEEN 1170 & 1000 FR. (08) = EM. RDZ. (07)

BETWEEN 1000 & 900 FR. (08) = EM. RDZ ^{2340 N} 15408 W

DUCK BUTT NOV BRAVO @ DTG 625

BETWEEN 900 FR. (08) & 1542 FR. (10) = HICKAM

BETWEEN 1542 & 1050 FR. (10) = JOHNSTON

DUCK BUTT TANGO ALPHA @ 982

BETWEEN 1050 & 640 FR. (10) = MIDWAY

BETWEEN 640 FR. (10) & 1515 FR. (12) = WAKE

SPECIAL DUCK BUTT #1 @ 1287

BETWEEN 1515 & 560 FR. (12) = Iwo Jima

SPECIAL DUCK BUTT #2 @ 290

RECALL CONTROL TRANSMITS
 SKYKING SKYKING THIS IS _____, THIS IS _____
 DO NOT ANSWER, BREAK BREAK **QUINCY**
 (CONTROL CALL SIGN) (RECALL WORD)(INS)
 BREAK BREAK, TIME _____ AUTHENTICATION _____
 (DATE/TIME GROUP) (PHONETIC WORDS)
 I SAY AGAIN (ENTIRE MESSAGE REPEATED), OUT.
AIRCRAFT ACKNOWLEDGES
 DO NOT ANSWER BUT AT FIRST OPPORTUNITY, INITIATE AN ABORT REPORT.
ABORT AIRCRAFT TRANSMITS
 SKYBIRD SKYBIRD THIS IS **BACK 42**, THIS IS **BACK 42**
 (ACFT CALL SIGN) (ACFT CALL SIGN)
 BREAK BREAK _____, BREAK BREAK AUTHENTICATION _____
 (ABORT CODE)(INS)
 I SAY AGAIN (ENTIRE MESSAGE REPEATED), OVER.
 (PHONETIC WORDS)
CONTROL ACKNOWLEDGES
BACK 42 THIS IS _____, ROGER, OVER.
 (ACFT CALL SIGN) (CONTROL CALL SIGN)
AIRCRAFT TRANSMITS
 THIS IS **BACK 42**, ROGER, OUT.
 (ACFT CALL SIGN)
DIVERT AIR TO GROUND--AIRCRAFT TRANSMITS
 SKYBIRD SKYBIRD THIS IS **BACK 42**, THIS IS **BACK 42**
 (ACFT CALL SIGN) (ACFT CALL SIGN)
 BREAK BREAK, DIVERTING TO _____, BREAK BREAK, TIME _____
 (DESTINATION NAME)
 _____, AUTHENTICATION _____, I SAY AGAIN
 (DATE/TIME GROUP) (PHONETIC WORDS)
 (ENTIRE MESSAGE REPEATED), OVER.
CONTROL ACKNOWLEDGES
BACK 42 THIS IS _____, ROGER, UNDERSTAND
 (ACFT CALL SIGN) (CONTROL CALL SIGN)
 DIVERTING TO _____, AUTHENTICATION _____, OVER
 (DESTINATION NAME) (PHONETIC WORDS)
AIRCRAFT ACKNOWLEDGES
 THIS IS **BACK 42**, ROGER, OUT.
 (ACFT CALL SIGN)
GROUND DIRECTED DIVERSION--CONTROL TRANSMITS
BACK 42, **BACK 42**, THIS IS _____
 (ACFT CALL SIGN) (ACFT CALL SIGN) (CONTROL CALL SIGN)
 THIS IS _____, BREAK BREAK, DIVERT TO _____
 (CONTROL CALL SIGN)
 _____, BREAK BREAK, TIME _____
 (DESTINATION NAME) (DATE/TIME GROUP)
 AUTHENTICATION _____, OVER.
 (PHONETIC WORDS)
AIRCRAFT ACKNOWLEDGES
 THIS IS **BACK 42**, ROGER, DIVERTING
 (CONTROL CALL SIGN) (ACFT CALL SIGN)
 TO _____, OVER.
 (DESTINATION NAME)
CONTROL ACKNOWLEDGES
 ROGER, OUT.

U M F

25X1

CH 4 SNOOT CONT.

CH 5 SNOOT CONT. (DEST.)

CH 17

CH 6 PINE (WAKE MODE X)

GUARD ALL DUCK BUTTS

"BACK" SSB 13267 (P) ALL
 42 11243 (S) DUCK BUTTS

REFER C.P. AREA

FIFI C.P. DEST.

TRIP WAKE X

SKY BIRD { PARKWAY OFFUTT \

CAPSULE MARCH

FATIMA HICKAM SAC

ALLOCATE WAKE

PORTWINE ANDERSON

DEMIJOHN KADENA /

2182 (P)

8364 (S)

EMER. AIR

UHF CHANNELIZATION - SUPERMAIDEN

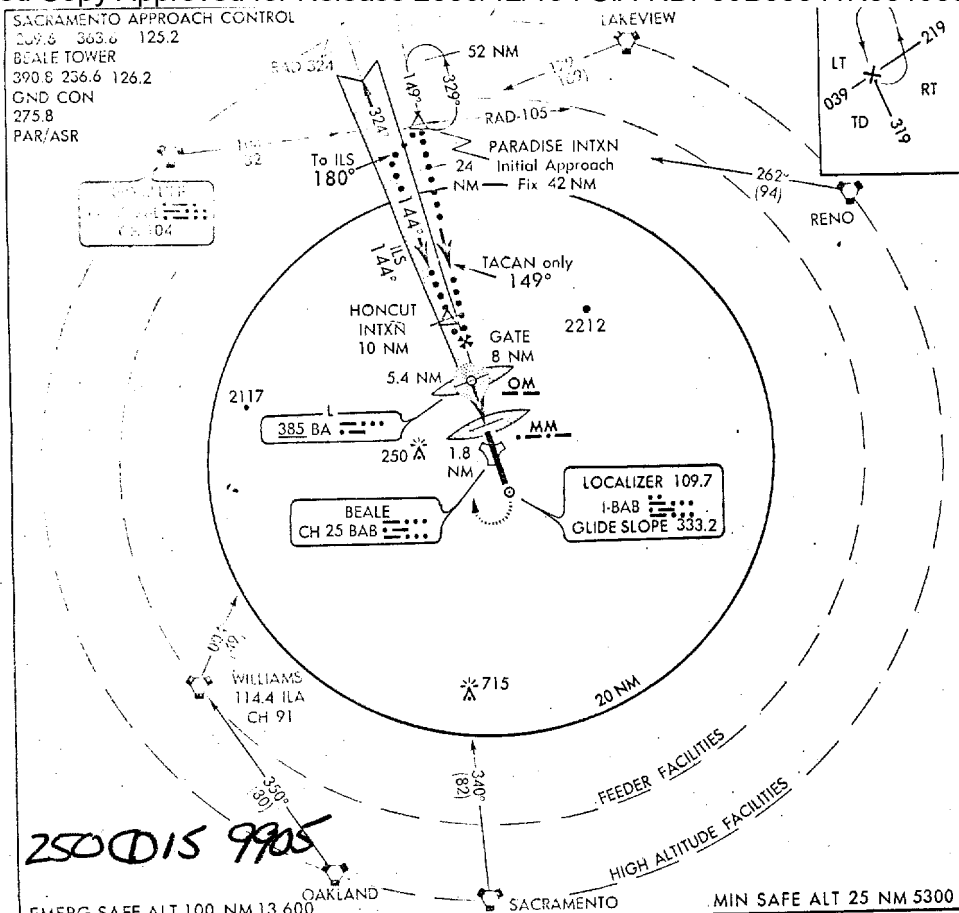
Sanitized Copy Approved for Release 2009/12/15 : CIA-RDP69B00041R001900130012-2

25X1

1.	349.7	TO DIVERT	BARNARD
2.	342.3	OW FREQ CHANGE	TERRY
3.	335.8	EW VALIDATION	ATLAS
4.	393.0	Control" (Area C.P.)	
5.	348.5	Primary AR & "SMART" (Wake Mode X)	
6.	361.5	Secondary AR & " " " "	
7.	291.6	Honolulu Center	
8.	338.2	" Approach Control	
9.	257.8	" Tower	
10.	348.6	Honolulu & Wake Ground Control	
11.	306.3	Wake Approach Control	
12.	257.8	Wake Tower	
13.	279.2	Okinawa Center (267.0)	
14.	287.8	" Approach Control (SFA)(261A)	
15.	315.8	Kadena Tower COCKPIT FOG	
16.	275.8	" Ground Control	
17.	348.5	"Pool Control" (Kadena CP)	
18.	236.6	Johnston/Midway App Cont & Tower	
19.	322.5	Guam Approach Control	
20.	308.6	Naha Tower	
	GUARD 243.0	"ORBIT" (DUCKBUTTS)	

SSB 13267 (P) 11243 (S)		
20064-3	"SNOOT 12" CHAN 5-6	"BACK 42" SSB
TOP OFF -	PRIMO 51 " 65	CHOP 43 PRIMO 65
1 ST OAK -	Rex 36 " 35	CHOP 34 " 37
2 ND HICKAM -	LINT 90 " 91	LIBRA 88 " 89
3 RD WAKE -	SHED 19 " 21 25	TERM 22 " 20 27
Iwo Jima -	SHED 26	TERM 29
KADENA - (END SPARE)	SHED 90	TERM 75

BEALE AFB



EMERG SAFE ALT 100 NM 13,600 SACRAMENTO MIN SAFE ALT 25 NM 5300

PARADISE INTXN RAD-329 42 NM FL 200	MISSED APPROACH Out 144° to 1000 then right to 290° climbing to 4000 to intercept 10 NM TACAN Arc via 10 NM TACAN Arc to HONCUT INTXN	FIELD ELEV 113
HONCUT INTXN RAD-329 24 NM	ILS 144° 5000 Glide Slope 2.75°	144° 4.1 NM From LOM
GATE 8 NM	2000 1500 358	Control Tower 215
LOM 5.4 NM	TACAN 1.8 NM	TACAN 180°
TACAN 1.8 NM	3.5 NM .6	A-G 32

LANDING MINIMA			
Straight-in ILS	313 MSL	200-1/2	
Circling	613 MSL	500-1	
Straight-in TACAN	413 MSL	300-1	
Straight-in W/O G/S			

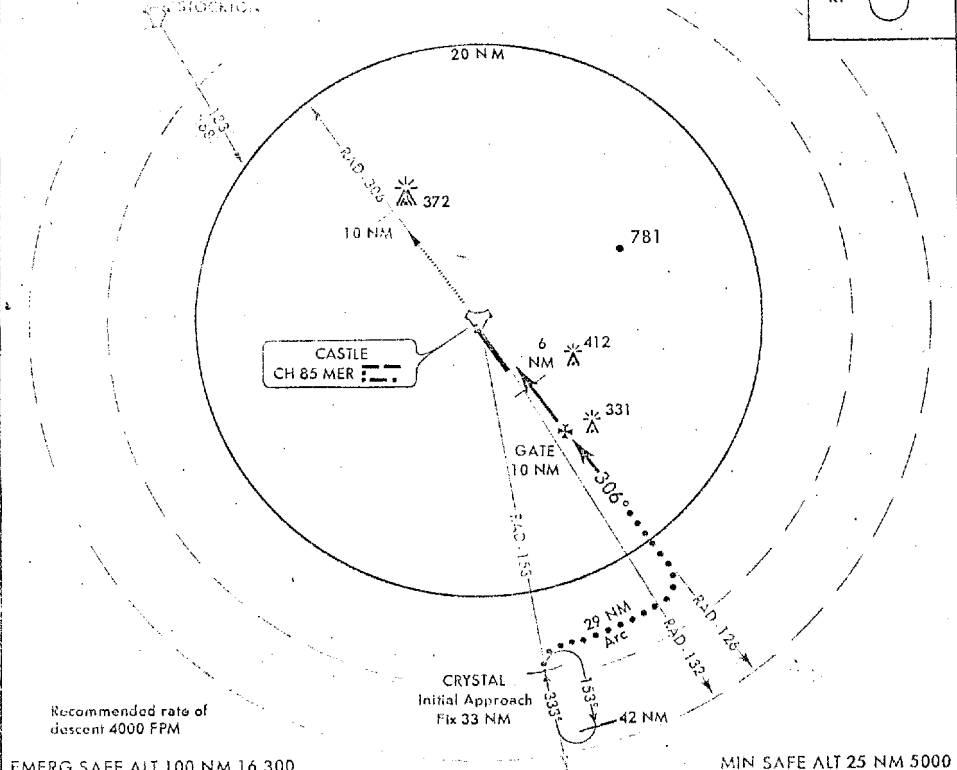
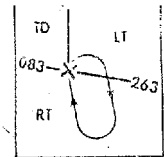
LOM to Localizer Missed Approach 4.1 NM					
Knots	120	140	160	180	200
Min: Sec	2:03	1:45	1:32	1:22	1:14

TACAN/ILS RWY 14 39°08'N - 121°26'W MARYSVILLE, CALIFORNIA BEALE AFB

TACAN-1
 Sanitized Copy Approved for Release 2009/12/15 : CIA-RDP69B00041R001900130012-2

294.5 363.8 139.9
 CASTLE TOWER
 289.6 236.6 126.2
 GND CON
 275.8
 PAR/ASR

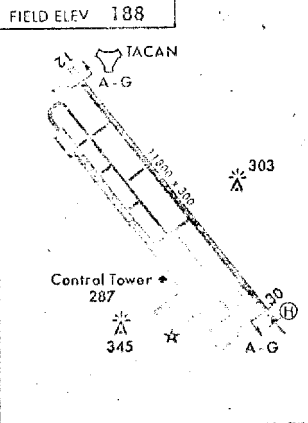
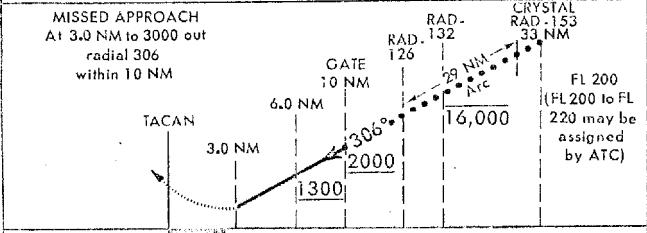
CASTLE AFB
 CALIFORNIA



Recommended rate of descent 4000 FPM

EMERG SAFE ALT 100 NM 16,300

MIN SAFE ALT 25 NM 5000



LANDING MINIMA			
Straight-in Rwy 30	588 MSL	400-1	
Circling	688 MSL	500-1	

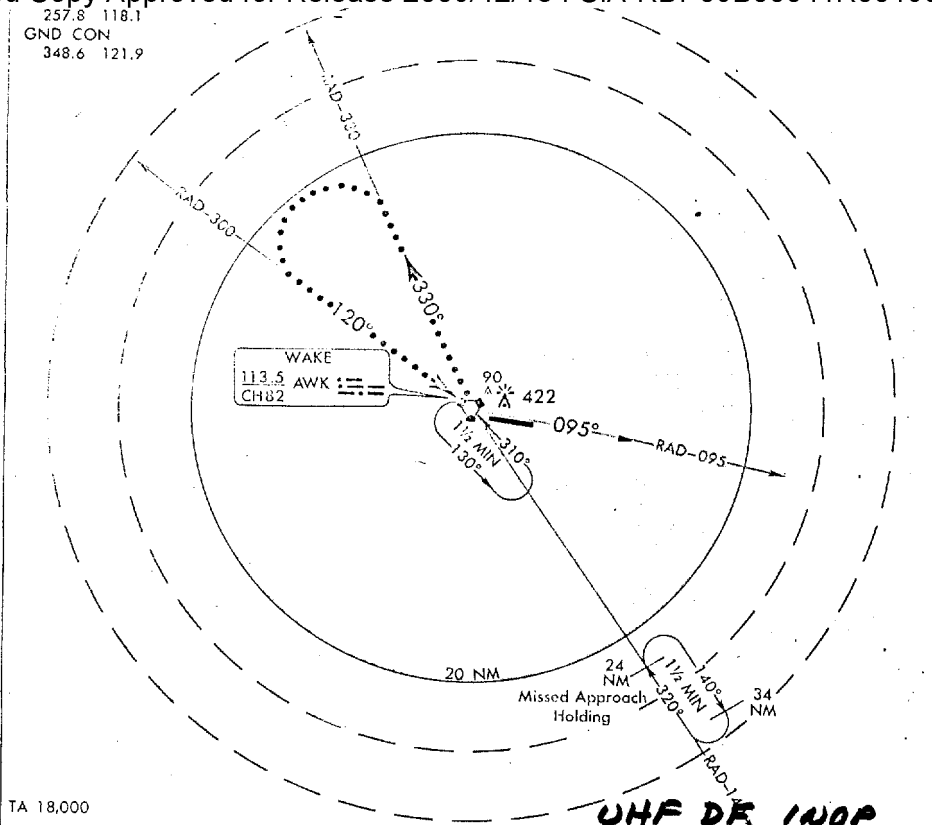
CLR 15 349/08

TACAN-1

37° 23' N - 120° 34' W

MERCED, CALIFORNIA
 CASTLE AFB

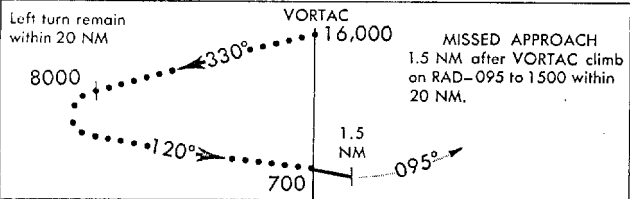
WAKE APP CON
 257.8 118.1
 GND CON
 348.6 121.9



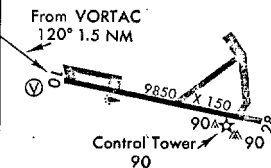
TA 18,000

EMERG SAFE ALT 100 NM 1500

MIN SAFE ALT 25 NM 1500



FIELD ELEV 13



LANDING MINIMA	
Straight-in	NOT AUTHORIZED
Circling	700 MSL : 700-2
VORTAC to Missed Approach 1.5 NM	
Knots	120 140 160 180 200
Min: Sec	0:45 0:39 0:34 0:30 0:27

20φ 50φ 15 110/15

VORTAC

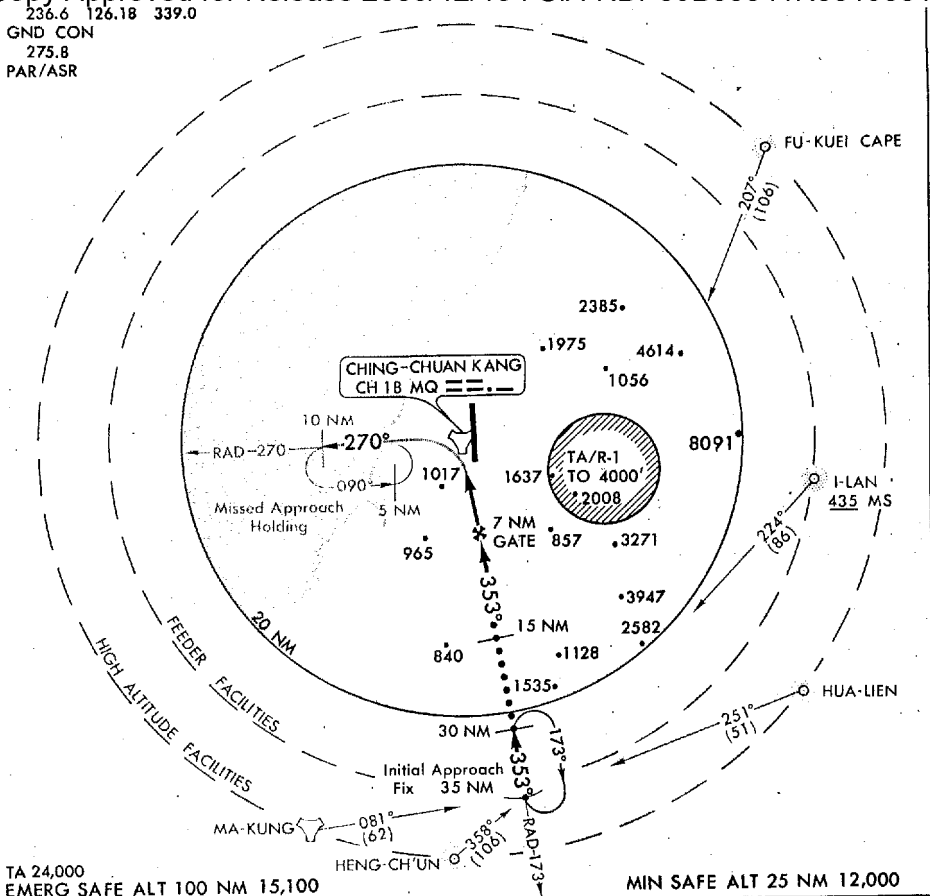
19°17'N-166°39'E

WAKE ISLAND
 WAKE ISLAND ADBT

236.6 126.18 339.0
 GND CON
 275.8
 PAR/ASR

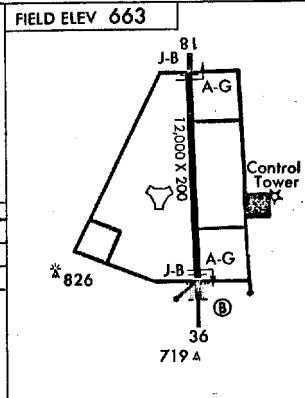
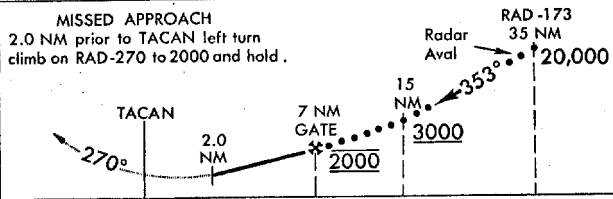
JAL-2842 (USAF)

CHING-CHUAN KANG AB
 KUNG KUAN, TAIWAN, REP. OF CHINA



TA 24,000
 EMERG SAFE ALT 100 NM 15,100

MIN SAFE ALT 25 NM 12,000

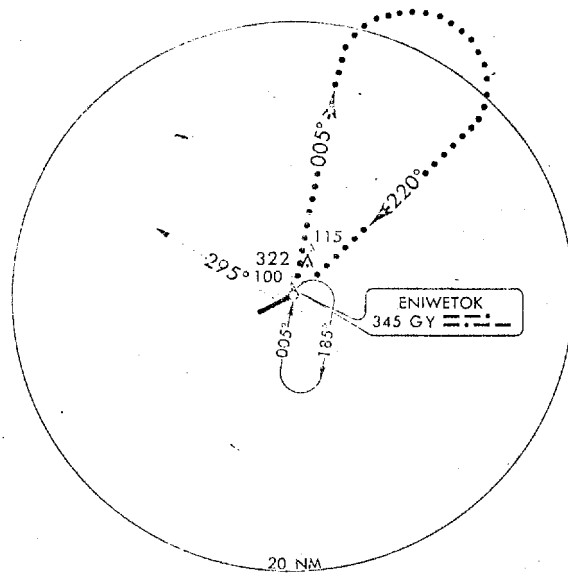


LANDING MINIMA		
Straight-in	1000 MSL	300-1
Circling	1200 MSL	500-1

1000 2000 8000 8 140/06
 RW UCNTY

Sanitized Copy Approved for Release 2009/12/15 : CIA-RDP69B00041R001900130012-2

MARKER RADIO
 17706.5 13354.5
 ENIWETOK TOWER
 236.6 142.74
 134.1 126.2
 GND CON
 275.8

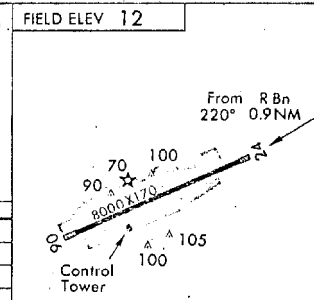
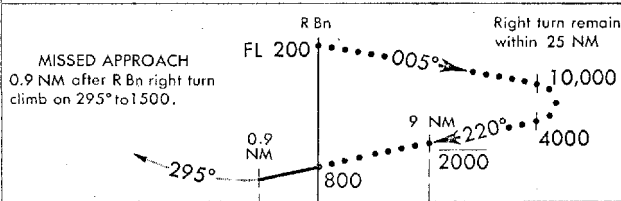


15φ 50 SCT 150φ 350φ 15 090/10620

TA 18,000

EMERG SAFE ALT 100 NM 1300

MIN SAFE ALT 25 NM 1300



LANDING MINIMA					
Straight-in	NOT AUTHORIZED				
Circling	500 MSL	500:1	500:2		
CAUTION: Prior permission from Headquarters Air Force Western Test Range (WTZ) Vandenberg AFB, Calif. 93437 required for entry into Eniwetok Closed Area.					
R Bn to Missed Approach 0.9 NM					
Knots	120	140	160	180	200
Min Sec	0:27	0:23	0:20	0:18	0:16

ADF

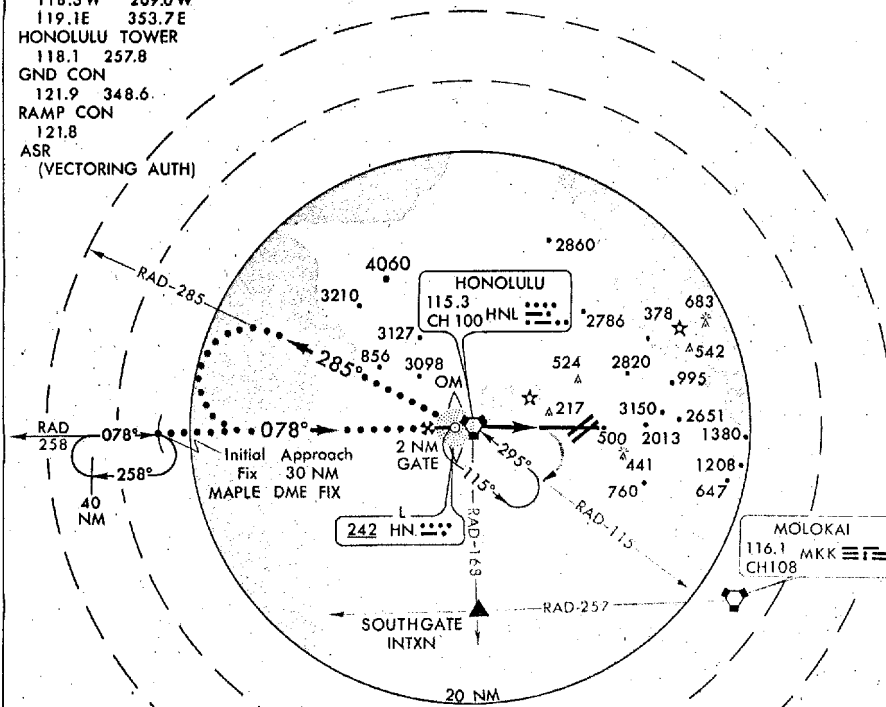
11°21'N-162°20'E

ENIWETOK ATOLL, MARSHALL ISLANDS
 ENIWETOK AAF

Sanitized Copy Approved for Release 2009/12/15 : CIA-RDP69B00041R001900130012-2

Sanitized Copy Approved for Release 2009/12/15 : CIA-RDP69B00041R001900130012-2

HONOLULU APP CON
 118.3W 269.0W
 119.1E 353.7E
 HONOLULU TOWER
 118.1 257.8
 GND CON
 121.9 348.6
 RAMP CON
 121.8
 ASR
 (VECTERING AUTH)

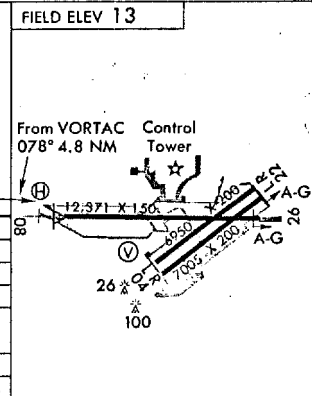
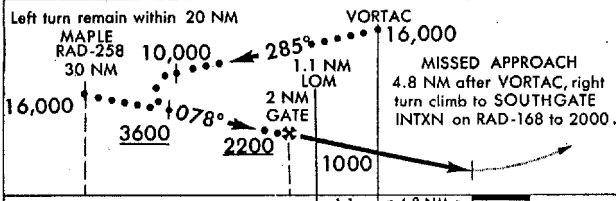


250 500 15 070/15

NOTE: Do not descend below 2200 until over the 1.1 NM DME (LOM) inbound due NAS BARBERS POINT 1500 jet traffic pattern.

TA 18,000
 EMERG SAFE ALT 100 NM 12,100

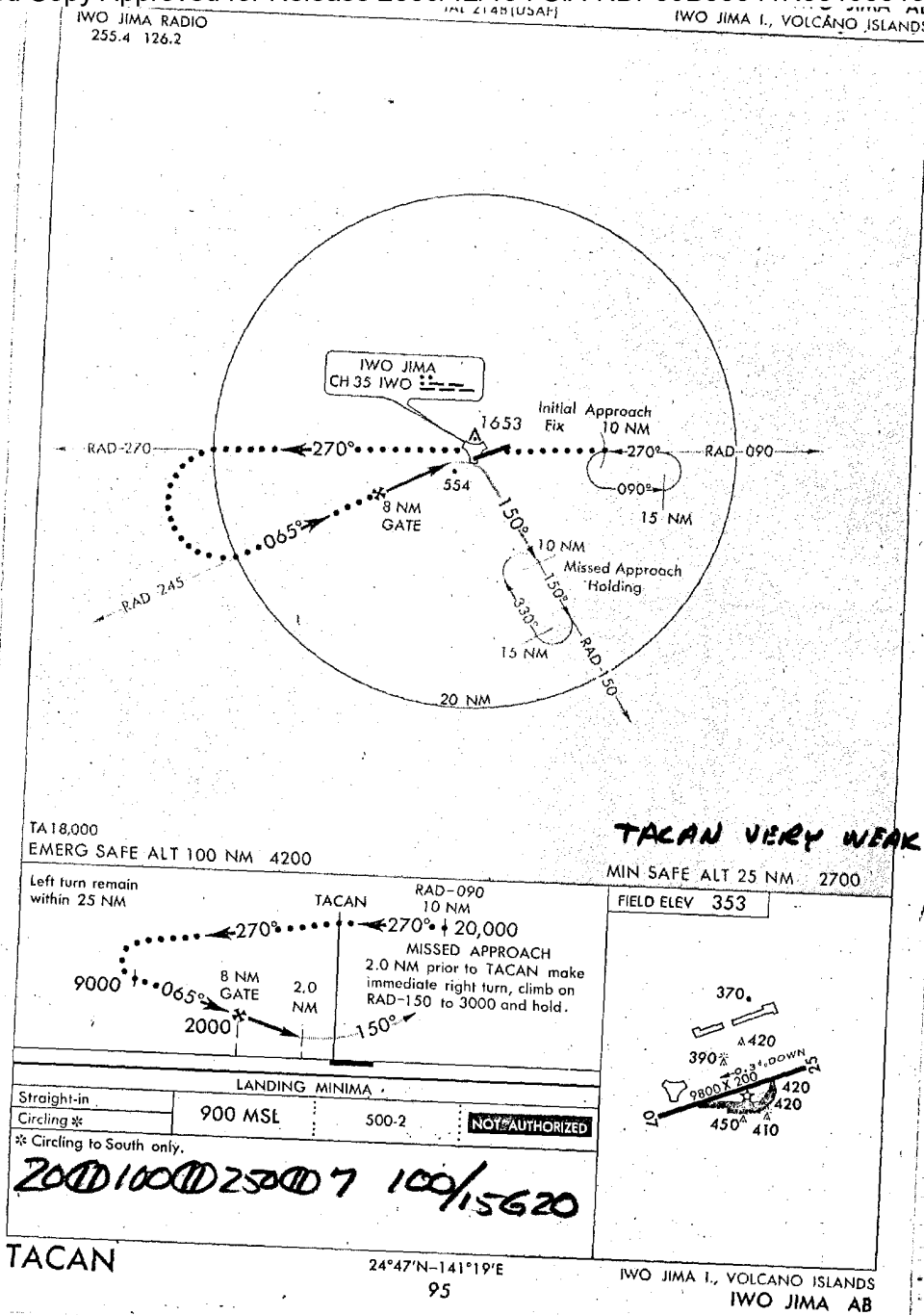
MIN SAFE ALT 25 NM 5100

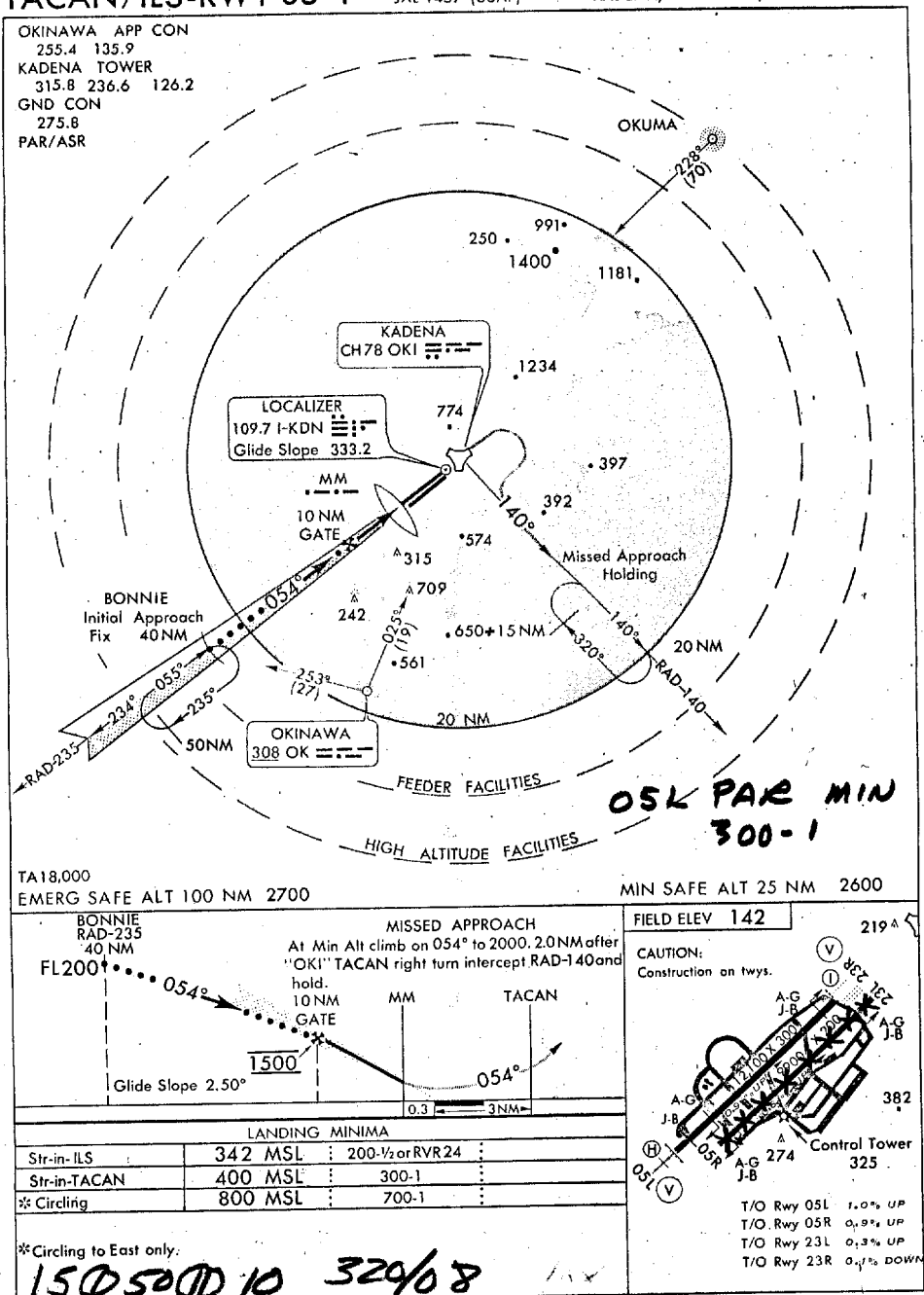


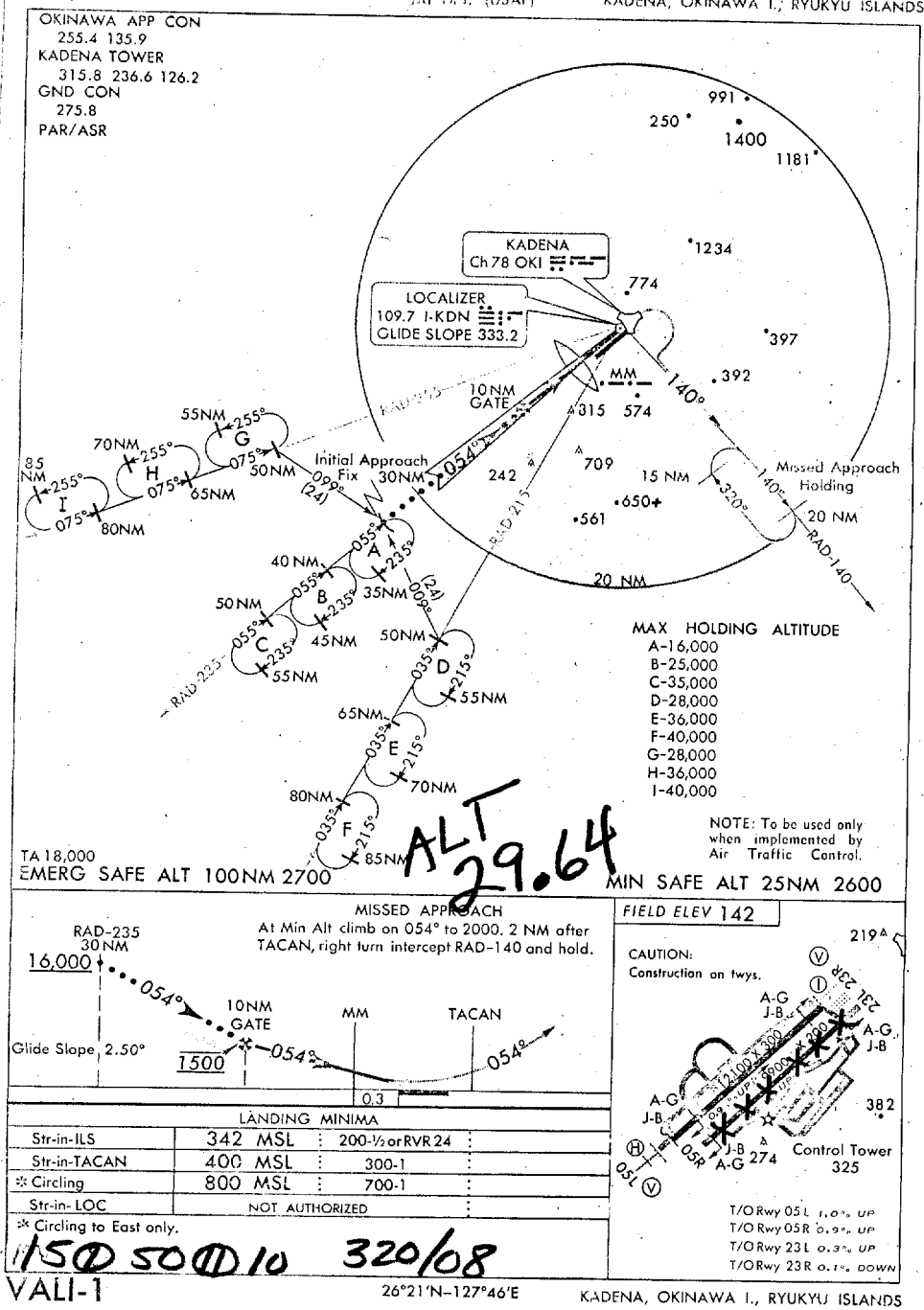
LANDING MINIMA	
Str-in-TACAN	400 MSL : 400-1
Str-in-VOR *	500 MSL : 500-1
Circling **	600 MSL : 600-2

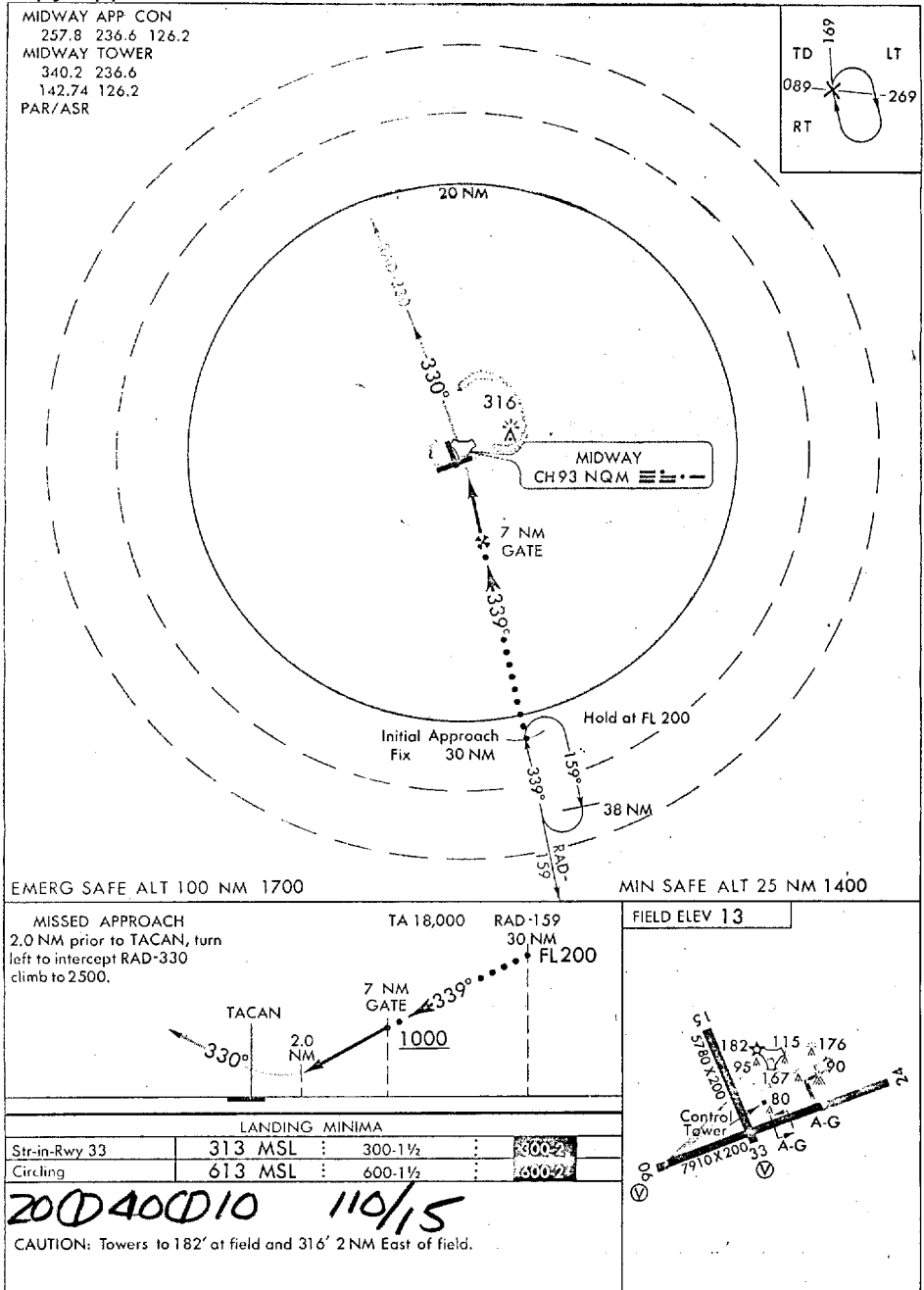
* Straight-in not authorized unless A/C receives 1.1 NM DME or LOM.
 ** Circling to South only.

VORTAC to Missed Approach 4.8 NM					
Knots	120	140	160	180	200
Min: Sec	2:24	2:03	1:48	1:36	1:26

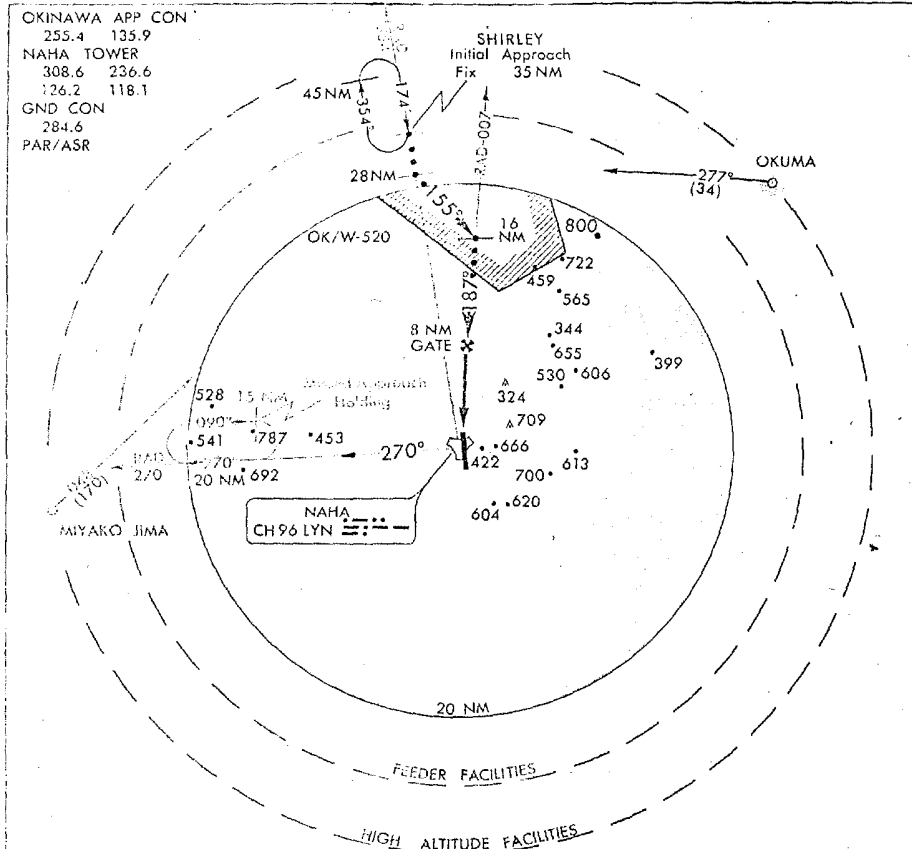




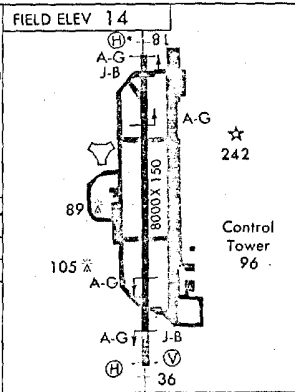
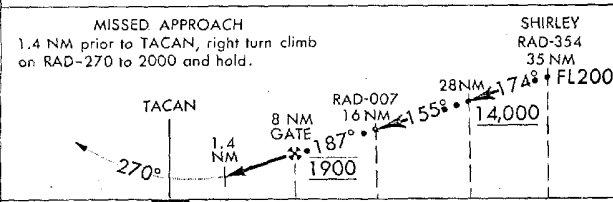




TACAN-RWY 18



TA 18,000
EMERG SAFE ALT 100 NM 2700
MIN SAFE ALT 25 NM 2200

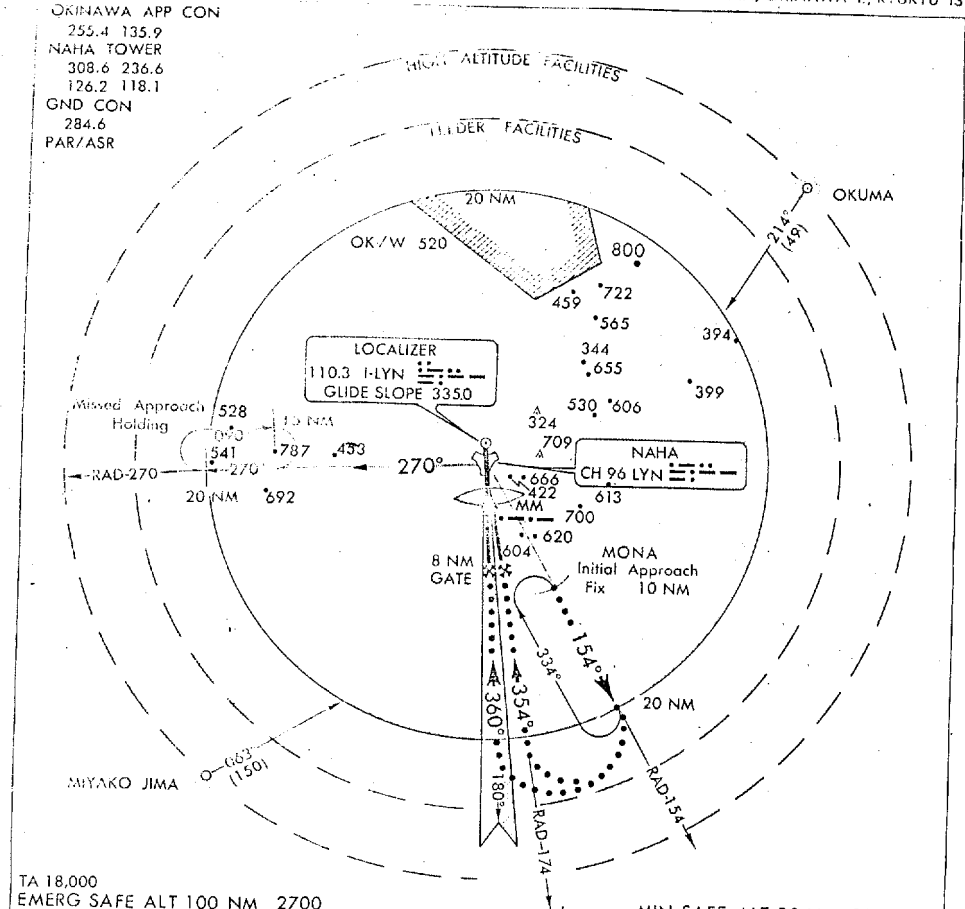


LANDING MINIMA			
Straight-in	400 MSL	400-1	
Circling *	600 MSL	600-1	

* Circling to West only
15005000 10 32/08

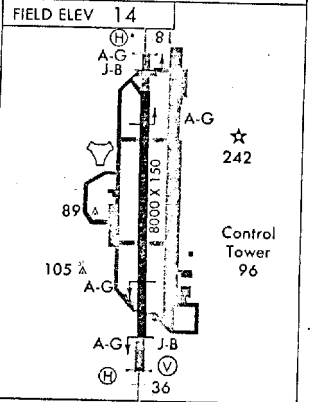
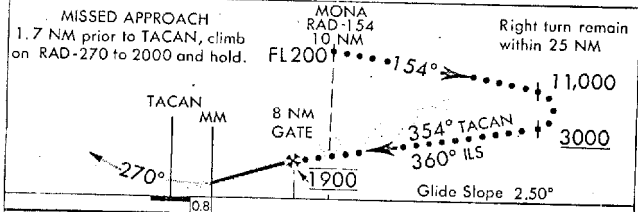
NAHA, OKINAWA I., RYUKYU IS.

OKINAWA APP CON
255.4 135.9
NAHA TOWER
308.6 236.6
126.2 118.1
GND CON
284.6
PAR/ASR



TA 18,000
EMERG SAFE ALT 100 NM 2700

MIN SAFE ALT 25 NM 2200



LANDING MINIMA	
Str-in-ILS	314 MSL : 300-1
Str-in-TACAN	500 MSL : 500-1
Str-in-LOC	400 MSL : 400-1
Circling *	600 MSL : 600-1

* Circling to West only

150 500 10 320/08

TACAN/ILS-RWY 36-2 26°11'N-127°39'E

NAHA, OKINAWA I., RYUKYU IS.

