

RECORDS ADMINISTRATION/DDS
Room 702
Magazine Building



WORLD CONFERENCE ON RECORDS

EXHIBITOR'S BROCHURE

August 5 - 8 1969 - Salt Lake City, Utah



WORLD CONFERENCE ON RECORDS

EXHIBIT SPACE RESERVATION FORM

Please use this form for requesting Exhibit Space at the World Conference on Records and Genealogical Convention & Seminar which will be held at the Salt Lake County Civic Auditorium – (Salt Palace), Salt Lake City, Utah, August 5-8, 1969.

COST OF EXHIBIT SPACE

Exhibit space is priced at \$350.00 and \$200.00 per 10' x 10' square or 100 square ft. (Refer to Floor Plan). Prices for Islands are included on the floor plan.

PAYMENT OF EXHIBIT SPACE RENTAL:

One-half of the exhibit space rental is due with this reservation form. Full payment is due upon confirmation of space assignment. MAKE ALL CHECKS PAYABLE TO: World Conference on Records.

NUMBER OF BOOTHS REQUESTED:

_____ Size: _____

Please indicate 1st, 2nd, and 3rd choices:

1st Choice, Booth No. or Nos. _____ Total Cost \$ _____

2nd Choice, Booth No. or Nos. _____ Total Cost \$ _____

3rd Choice, Booth No. or Nos. _____ Total Cost \$ _____

Space will be assigned on the basis of amount of space required, date of receipt of space reservation form, special needs and compatability of exhibitors.



WORLD CONFERENCE ON RECORDS

PLEASE SPECIFY COMPANIES AND/OR PRODUCTS YOU WOULD LIKE TO BE NEAR TO OR REMOVED FROM:

Near To _____

Away From _____

Describe product, or service to be exhibited. Information will be used in final program, so please limit description to less than 50 words.

PLEASE PRINT COMPANY NAME EXACTLY AS IT SHOULD BE LISTED IN THE PROGRAM AND ALL PUBLICITY MATERIAL.

SIGNED:

Company _____ Street _____

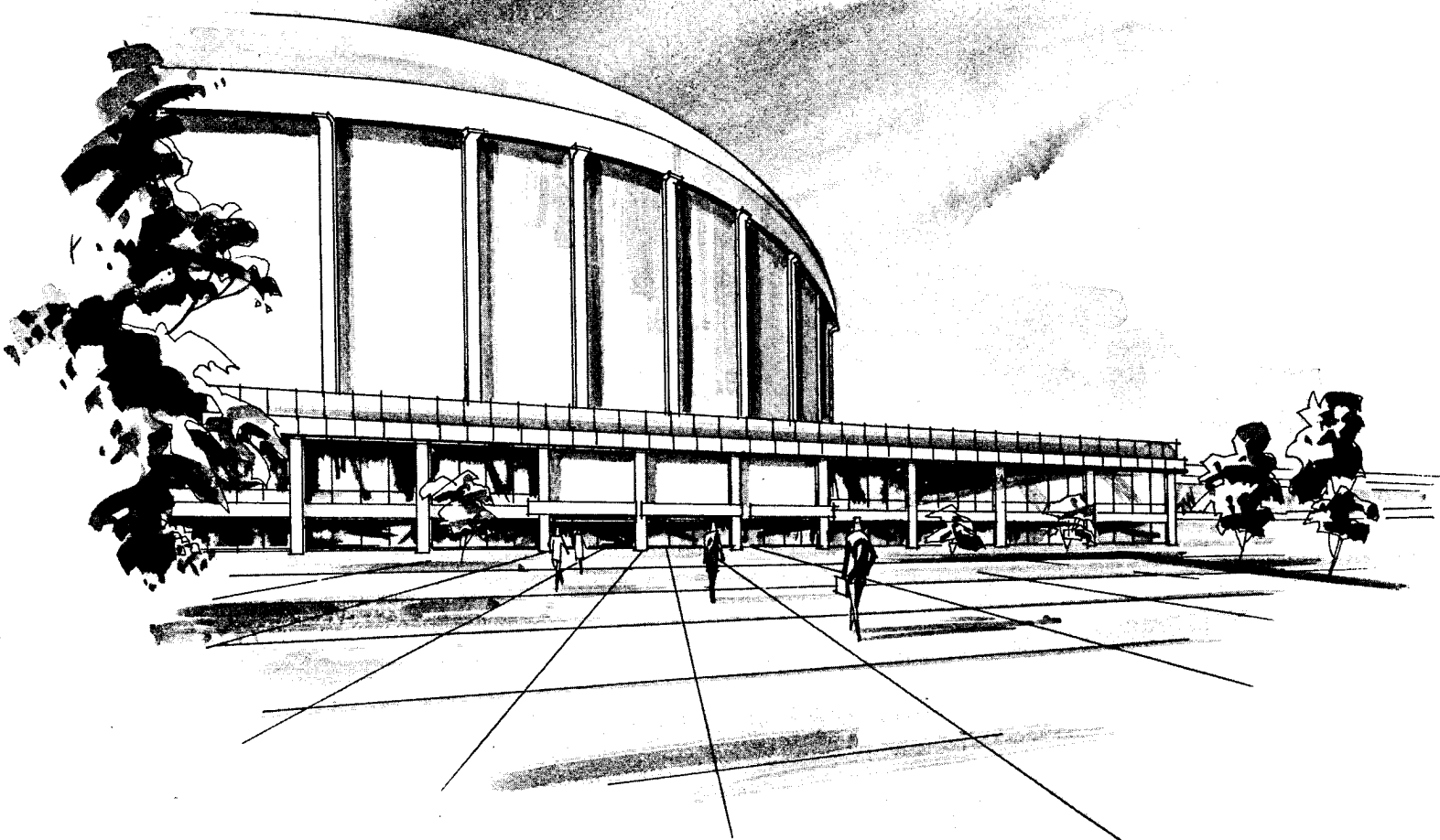
City, State, Zip _____

Name _____ Title _____

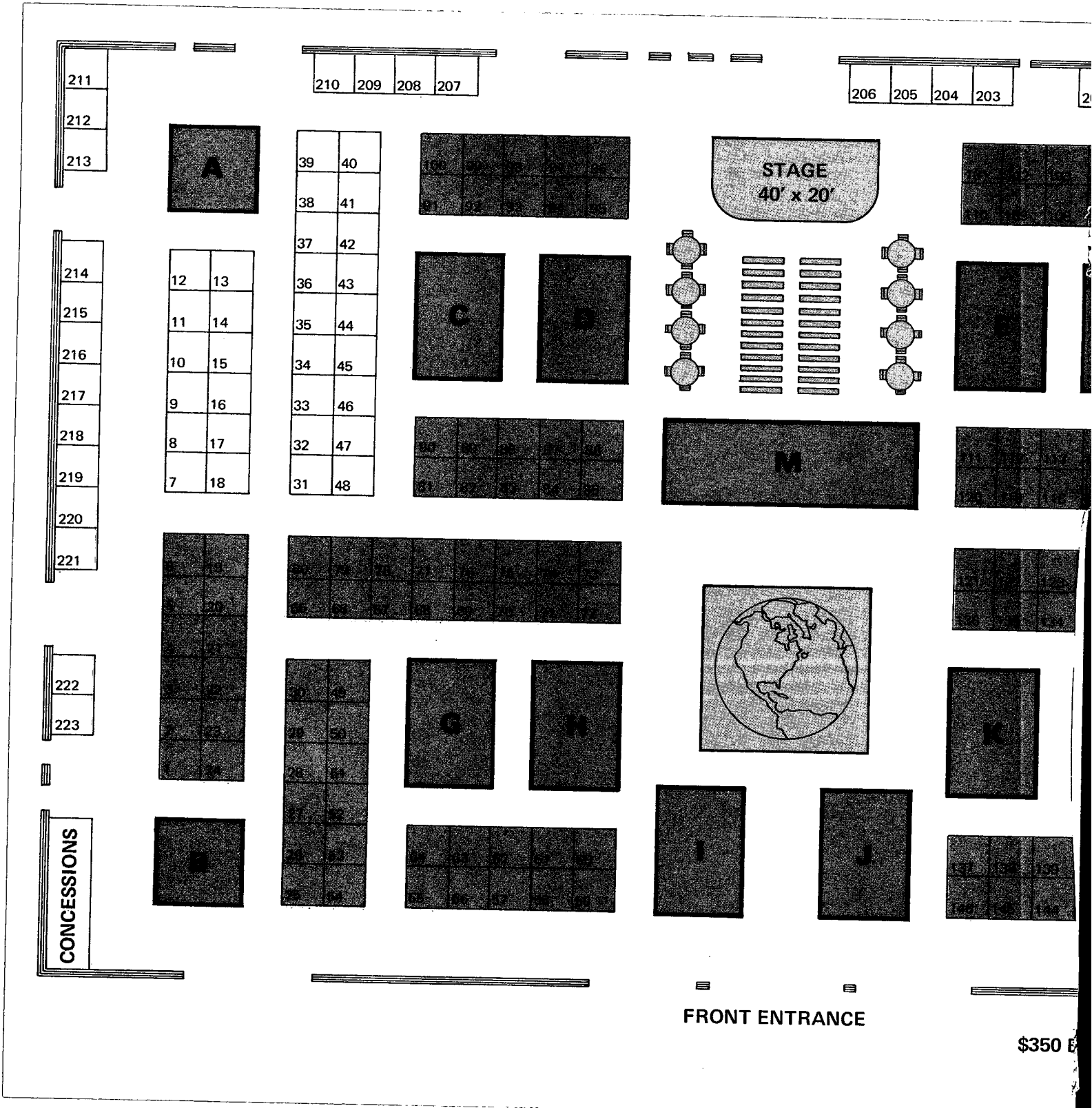
Signature _____ Date _____

Amount of Check enclosed \$ _____

Please Mail to: Planning Coordinator
World Conference On Records
79 South State Street
6th Floor
Salt Lake City, Utah 84111 U. S. A.
Phone: (801) 364-2511 Ext. 2351





"SALT PALACE"



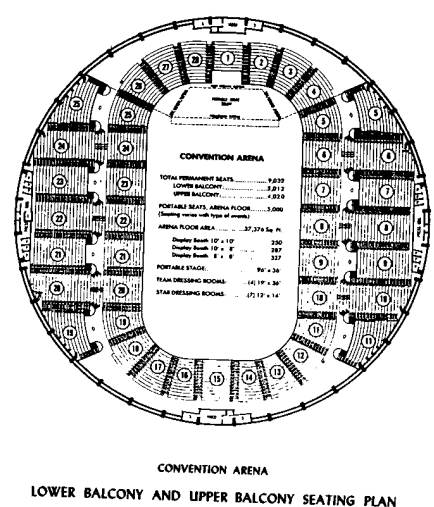
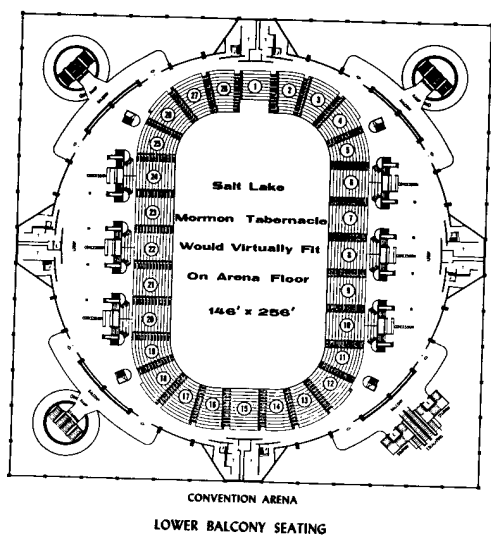
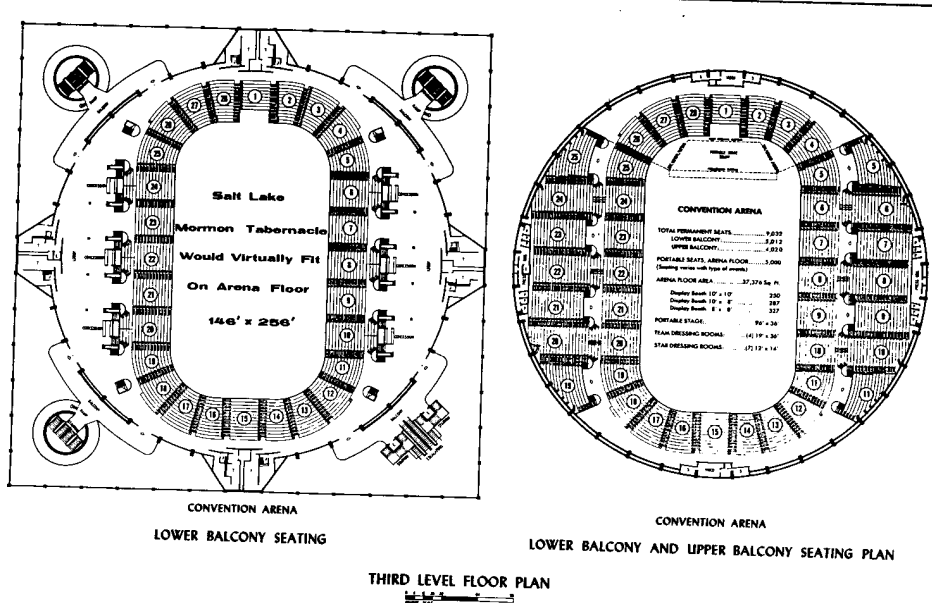
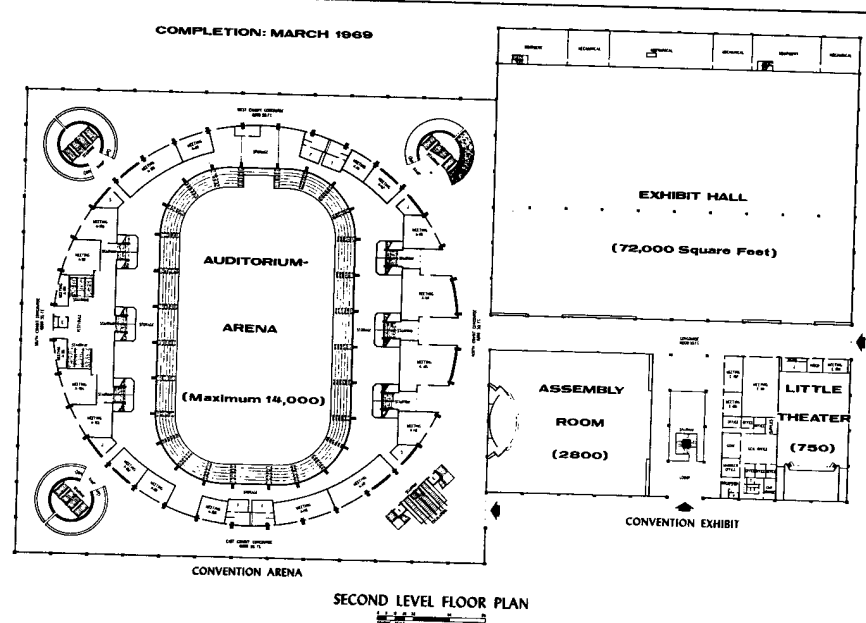
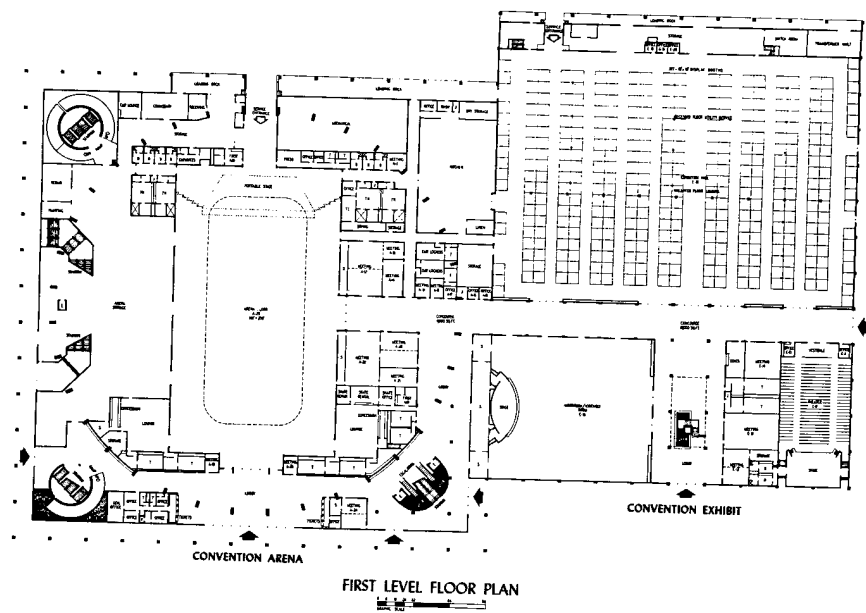
\$350 B

SALT LAKE COUNTY CIVIC AUDITORIUM / "SALT I

2	201	200	199	198	197	196	195
							194
							193
							192
							191
							190
							189
							188
							187
							186
							185
							184
							183
							182
							181
							180
							179
							178
							177

BOOTHS  \$200 BOOTHS 
 UNIT PRICES ON FOLLOWING PAGE

ALACE™





WORLD CONFERENCE ON RECORDS

CLASSIFICATION

"A"	\$1,000
"B"	\$1,200
"C"	\$1,800
"D"	\$1,800
"E"	\$1,800
"F"	\$1,800
"G"	\$1,800
"H"	\$1,800
"I"	\$1,800
"J"	\$1,800
"K"	\$1,800
"L"	\$1,800
"M"	\$3,000

GENERAL INFORMATION

SET-UP TIME

Friday, August 1, 8:00 a.m. through Saturday, August 9, 12:00 p.m.

SHOW EXHIBIT HOURS

Tuesday	August 5	1:00 p.m. - 10:00 p.m.
Wednesday	August 6	12:00 p.m. - 10:00 p.m.
Thursday	August 7	12:00 p.m. - 10:00 p.m.
Friday	August 8	12:00 p.m. - 8:00 p.m.

DISMANTLING TIME

Saturday, August 9, 8:00 a.m. to 12:00 midnight

BOOTH EQUIPMENT AND SERVICE INFORMATION

A standard sign 9" x 44" bearing the exhibitor's name and booth number, is furnished for the backdrop. Complete shipping instructions and information regarding furniture and carpet rental, draperies, electrical work, plumbing, labor for erecting and dismantling, exhibits, drayage, sight, etc., will be forwarded to exhibitors after space has been confirmed. A service desk will be maintained in the Exhibit Hall to facilitate service requests from exhibitors.

EXHIBIT HOUSING

Forms for rooms for exhibit personnel will be forwarded to all exhibitors after space has been confirmed. All requests for sleeping and hospitality rooms will be assigned on a first-come, first-served basis.



WORLD CONFERENCE ON RECORDS

AUDIENCE

ARCHIVISTS

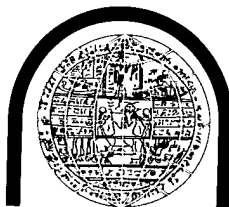
- County
- State
- Federal (All Levels)
- International
- Private Institutions
- Church Archives
- Provincial Archives
- Armed Forces Archives

HISTORIANS

- International
- Museum Directors & Curators
- University
- Historical Institutes
- Historical Societies
- Federal Government
- Armed Forces

ASSOCIATIONS & SOCIETIES

- | | |
|---|--|
| Genealogical Societies - International | Microfilm Associations |
| Heraldic Societies - International | Hereditary & Patriotic Societies |
| Historical Societies & Associations | Family Organizations |
| Library Associations - Government & Private | Technological EDP & Data Communications Associations |



WORLD CONFERENCE ON RECORDS

COMMERCIAL SUPPLY HOUSES

Genealogical Supplies
Genealogical Publishing Houses
Reprographic Manufacturers & Distributors
Office Equipment
Photographic Supply Houses
Microfilm Equipment
Computer Equipment
Library Supply Houses
Indexing Method Companies
Office Filing Equipment
Record Storage Systems
Camera & Projection
Office, Library, Archives Cataloging
Film Companies
Book Publishing Companies

LIBRARIANS

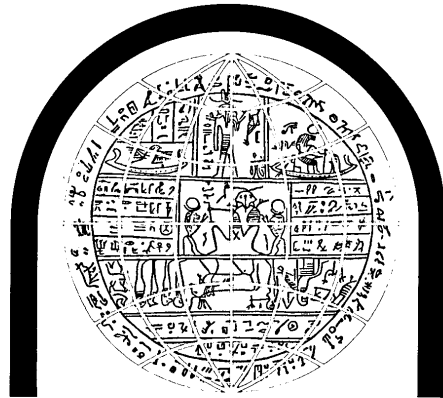
State
County
City
International
Private
Library of Congress
Armed Forces Librarians
Genealogical Librarians

GENEALOGISTS

Professional Genealogists
Record Searchers
Certified Genealogists
Accredited Genealogists
Amateur Genealogists
Editors - Genealogical Magazines &
Family Organization Publications

Declassified and Approved For Release 2012/05/16 : CIA-RDP73-00402R000100130007-3

RECORDS ADMINISTRATION/EDS
Room 702
Magazine Building



RECORDS PROTECTION IN AN UNCERTAIN WORLD

Declassified and Approved For Release 2012/05/16 : CIA-RDP73-00402R000100130007-3

Declassified and Approved For Release 2012/05/16 : CIA-RDP73-00402R000100130007-3



YOUR HOST

The people and facilities of
The Genealogical Society of
The Church of Jesus Christ
of Latter-day Saints
Salt Lake City, Utah U.S.A.

Declassified and Approved For Release 2012/05/16 : CIA-RDP73-00402R000100130007-3

WORLD
CONFERENCE
ON RECORDS

**“RECORDS PROTECTION
IN AN UNCERTAIN WORLD”**

Mankind is a large family, unified by origination from a common parenthood.

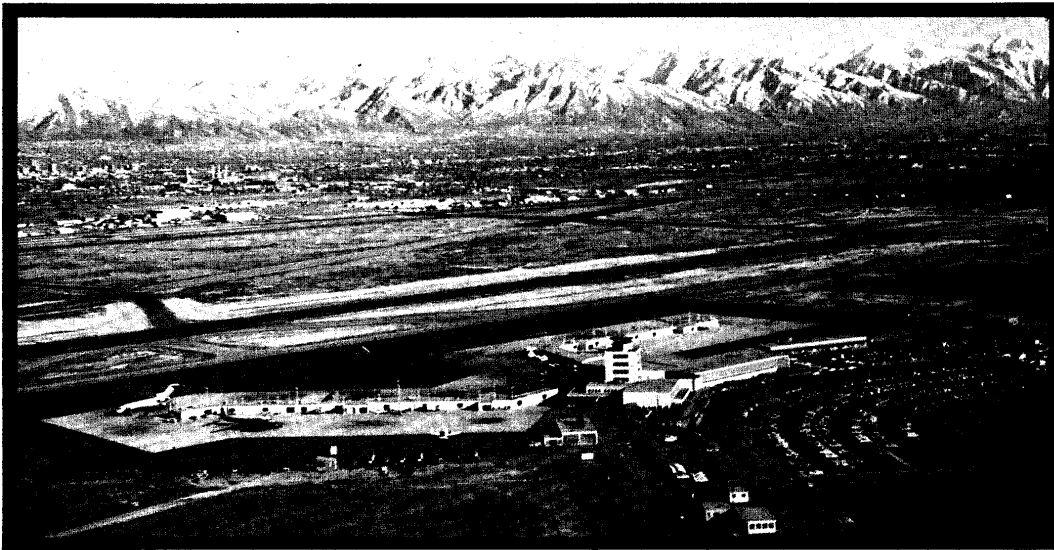
Through the ages of time, man's culture and progress have been described in the writing of scholars . . .

a generic accumulation of important records.

Man, too, is an individual. His sophistication as an intellect prompts him to want to know of his ancestors; to trace the branches of generations back into the roots of his family tree.

His intelligence, teamed with modern technology and propelled by spiritual incentives, has provided means for him to locate, organize, and record these important genealogical data.

INTERNATIONAL AIRPORT



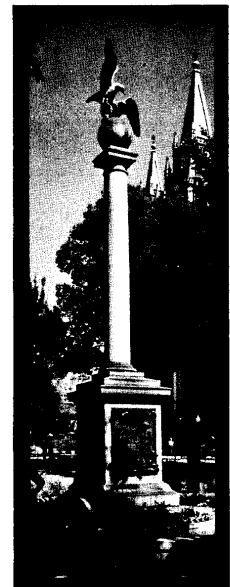
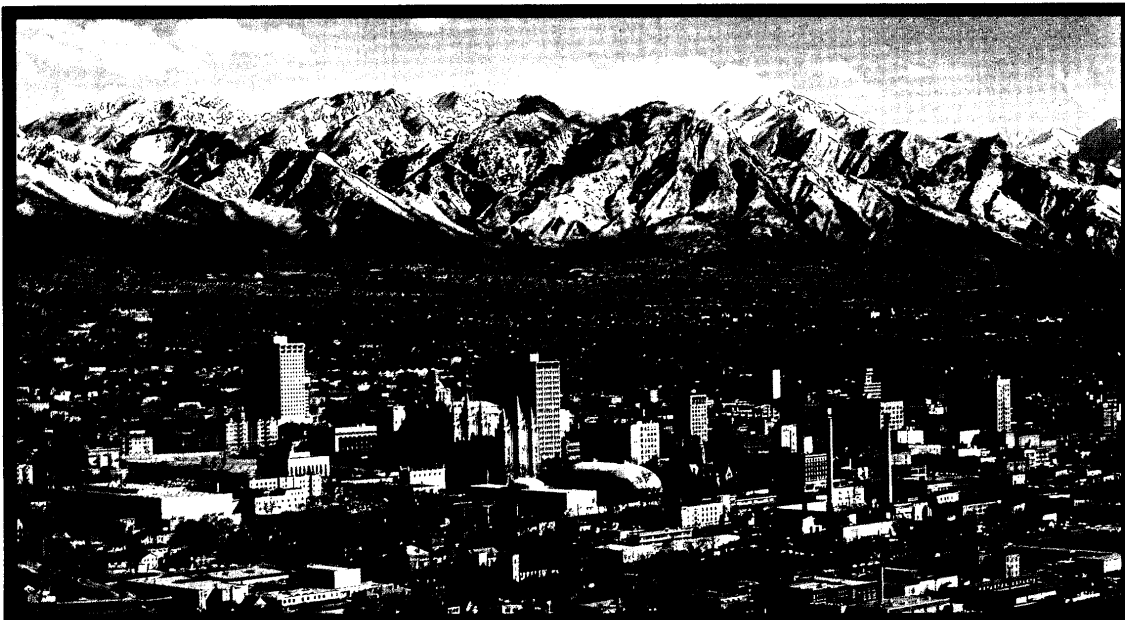
Salt Lake City's International Airport is a main terminal for major airlines. Convention headquarters and downtown Salt Lake City are less than ten minutes from the airport by automobile.



SALT LAKE CITY

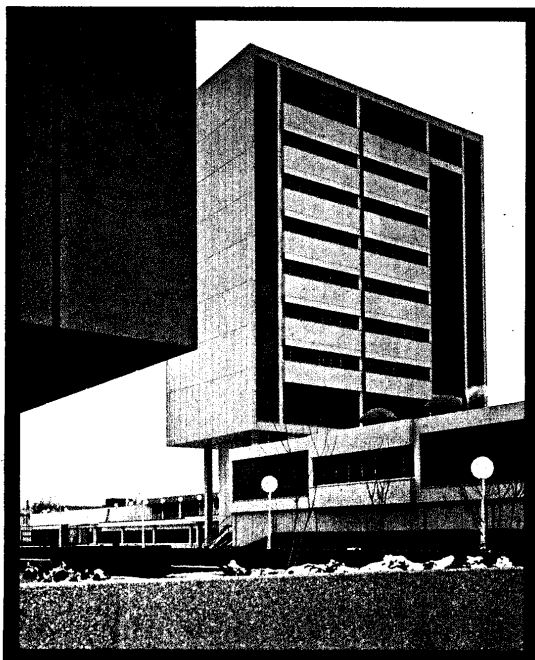
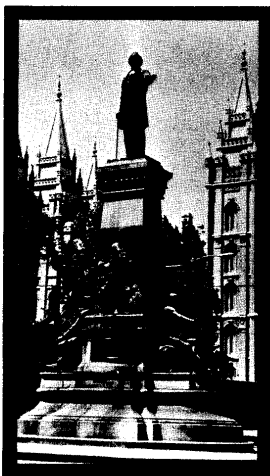
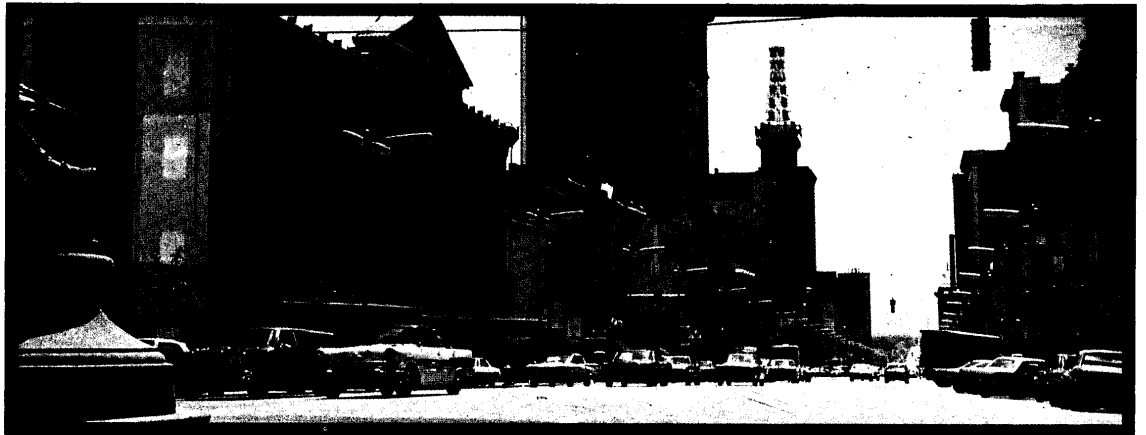
An oasis of historical interest, located in the heart of western America's high mountain country, Salt Lake City was founded in 1847 by Mormon pioneers under the leadership of Brigham Young, and was selected as the site for the headquarters of their church.

From the arid wastes of a sage-covered valley, bound on the west by the Great Salt Lake and encircled by craggy mountains, these determined people made this desert land "blossom as the rose."



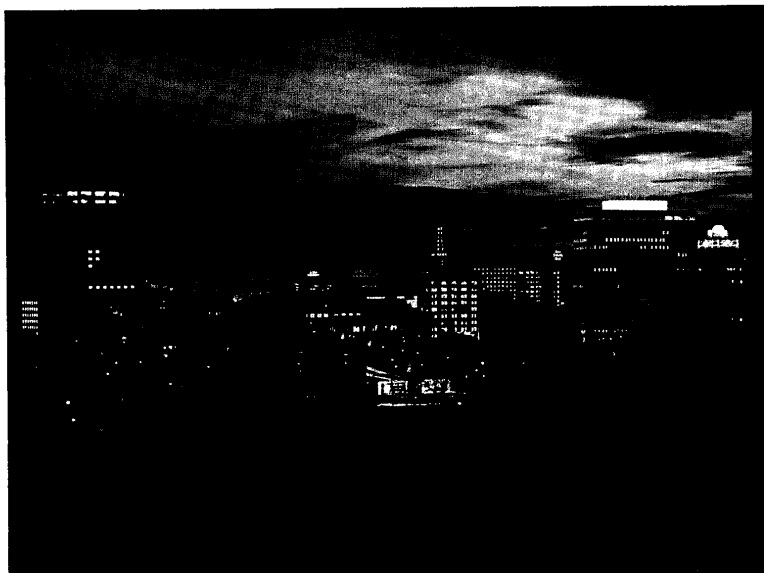
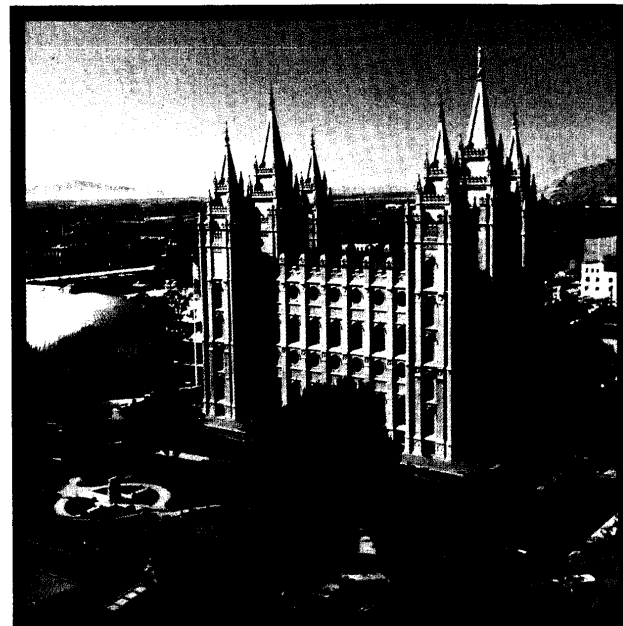
Declassified and Approved For Release 2012/05/16 : CIA-RDP73-00402R000100130007-3

Downtown
Salt Lake City reflects the
architecture of the early pio-
neer period mingled with con-
temporary structures of today.



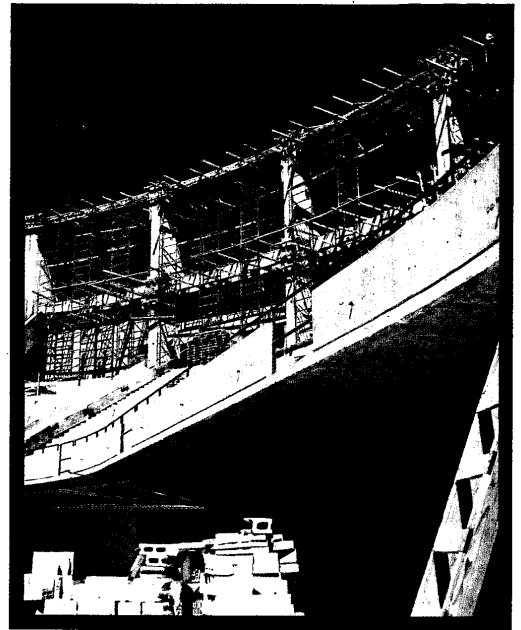
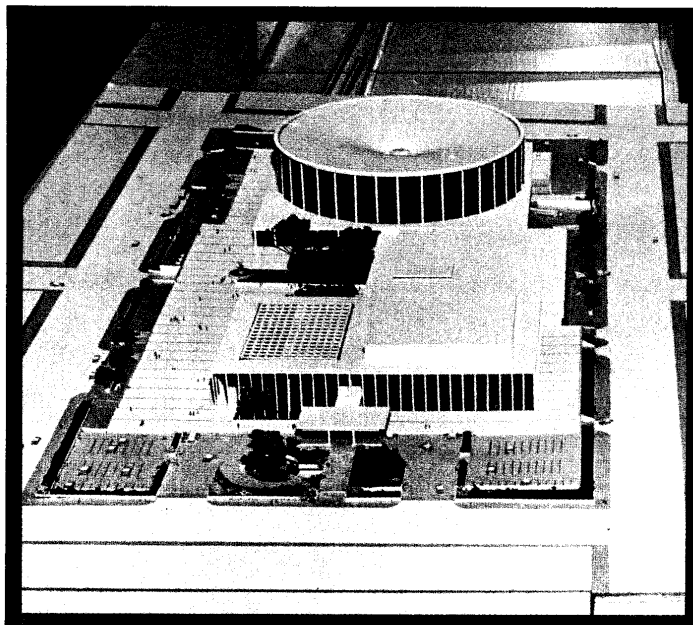
Declassified and Approved For Release 2012/05/16 : CIA-RDP73-00402R000100130007-3

Beauty unlimited captivates the tourist in this city in the mountains. The splendor and history of the famous Temple Grounds of The Church of Jesus Christ of Latter-day Saints invite all visitors to acquaint themselves with the background of the Mormons. Guided tours . . . comprehensive displays of relics and historical artifacts . . . literature . . . every service for the interested visitor. Television facilities, financial and business institutions line the skyline of this bustling community of yesterday, today, and tomorrow.



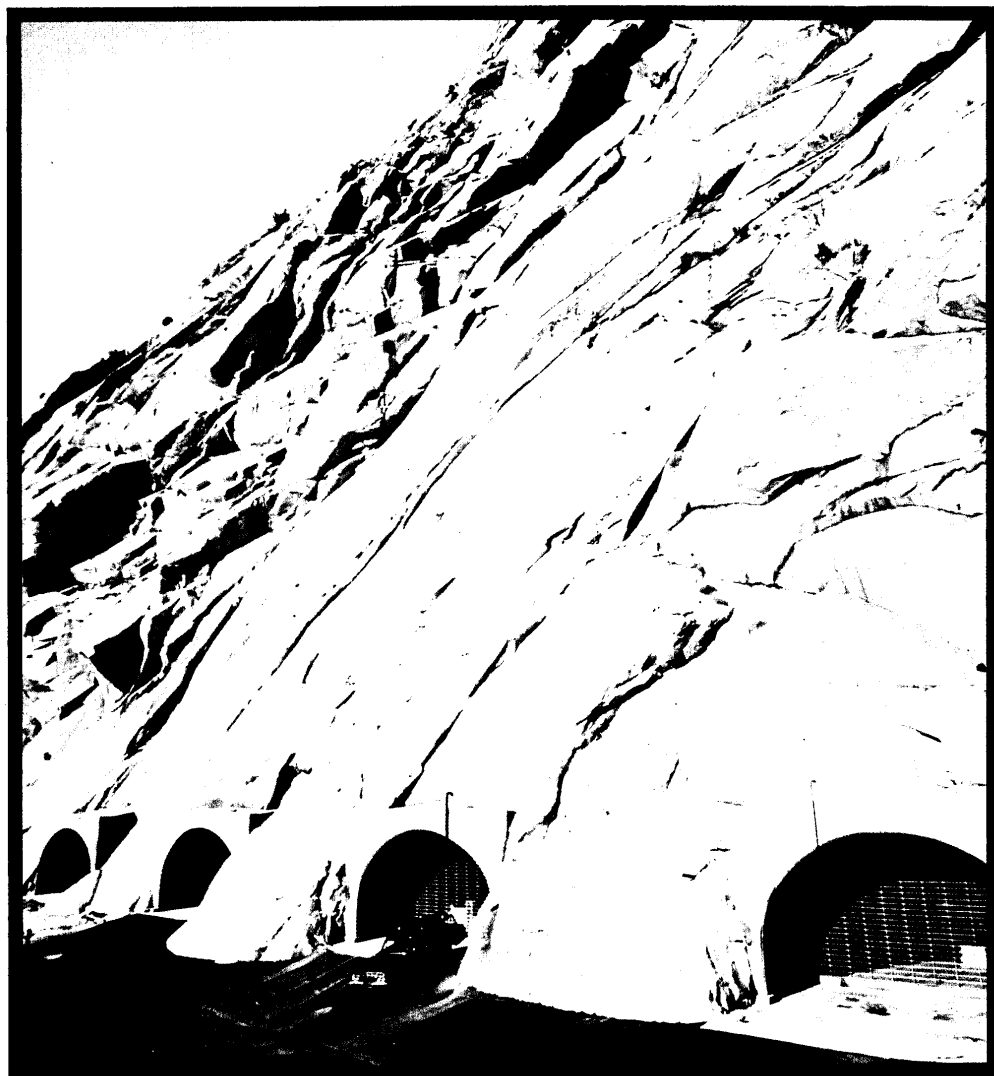
CIVIC AUDITORIUM

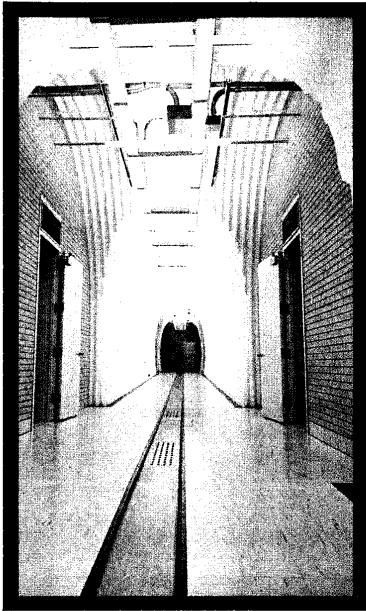
The new Salt Palace complex is customized for every convention need, with theaters, assembly halls, display areas, sports arena . . . and located in downtown Salt Lake City, within walking distance of most hotels and motels.
Site for the World Conference on Records.



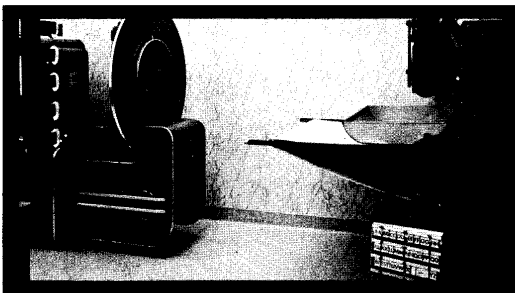
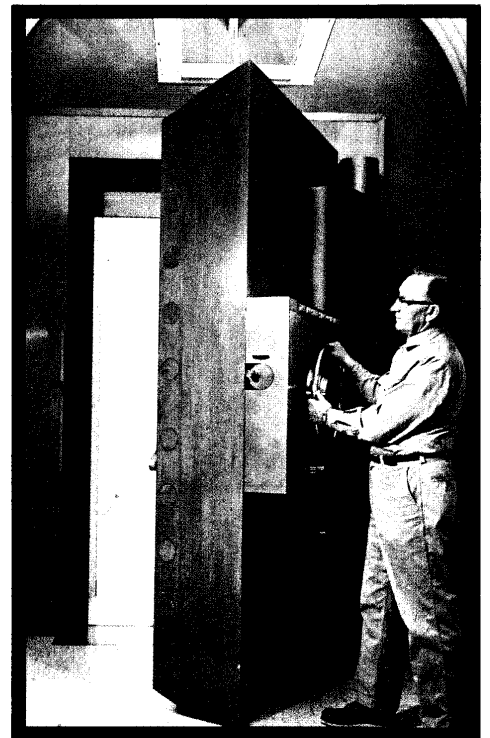
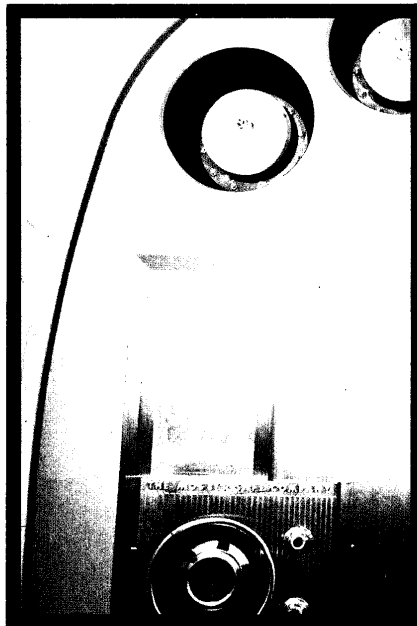
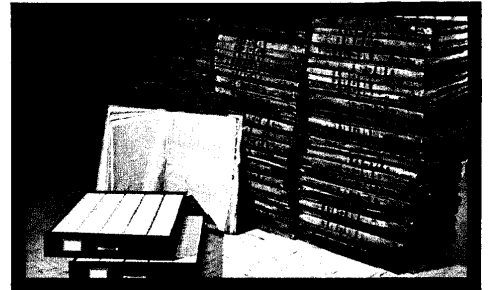
GRANITE MOUNTAIN VAULTS

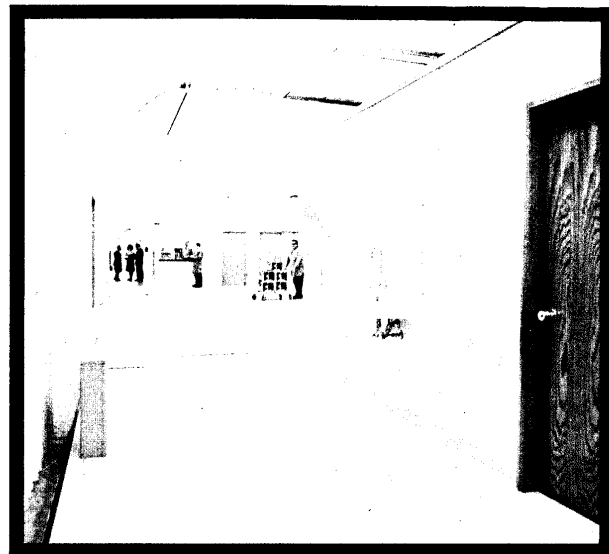
Southeast of Salt Lake City, harbored in the granite cliffs of majestic mountains, is the Granite Mountain Records Vault of The Church of Jesus Christ of Latter-day Saints . . . designed for safe-keeping the records of The Genealogical Society.





Three access tunnels faced with special bank-vault doors can withstand even the most powerful bombs. Special temperature controls and humidifiers assure perfect storage conditions. Emergency power generators and fresh-air filter units provide additional safety measures. Pure mountain water flows into the vault's reservoir at the rate of 8,700 gallons daily.



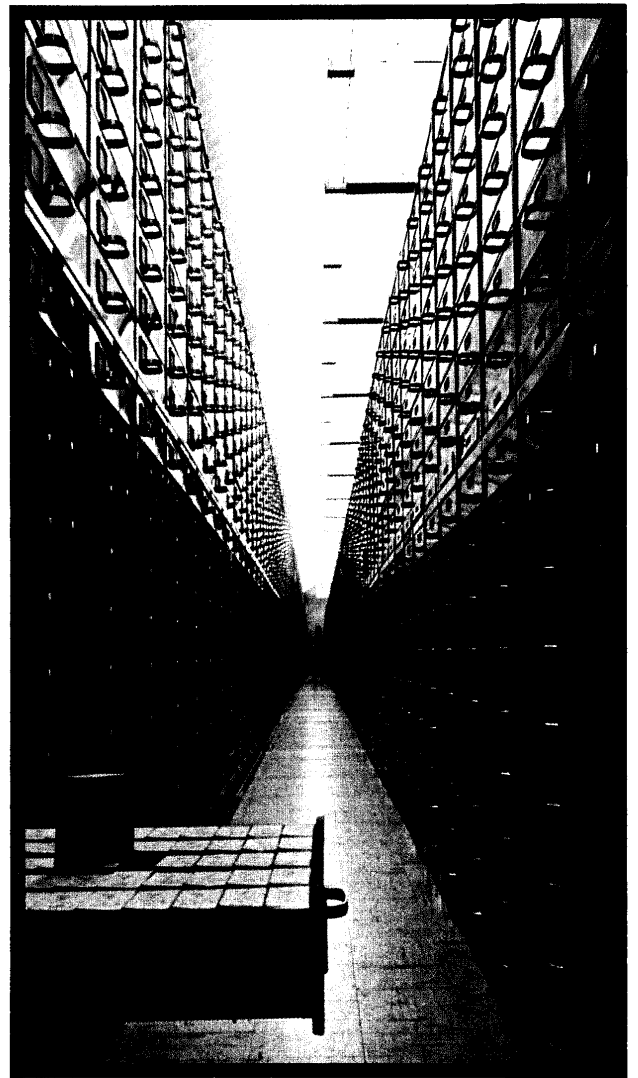
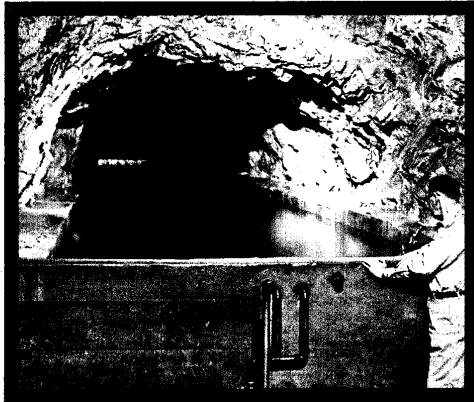
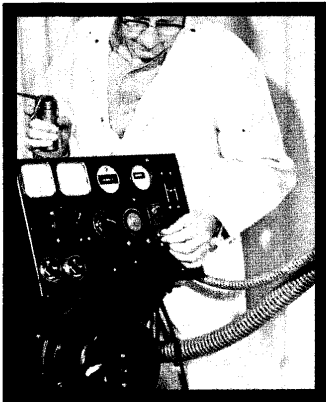
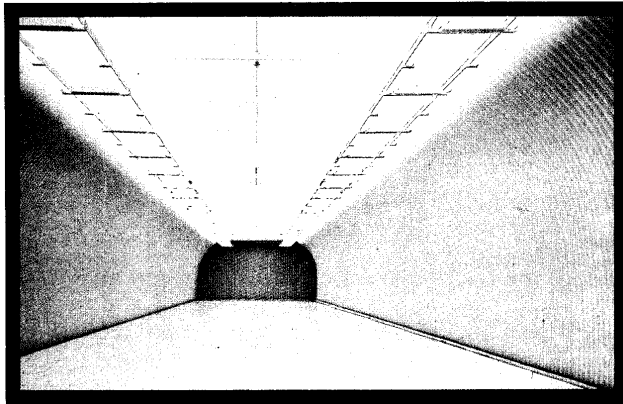


Protected from all elements, including the possibility of bombings, fire, or vandalism, the Granite Mountain Records Vault houses the hundreds of thousands of reels of microfilmed genealogical records gathered to date by the Genealogical Society. Begun in 1958 and completed in 1965, these vaults are protected with a 600-foot thick ceiling of solid granite over the laboratory area and a 700-foot ceiling over the six huge vault storage rooms.



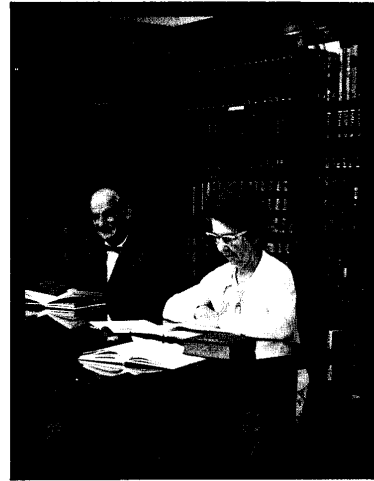
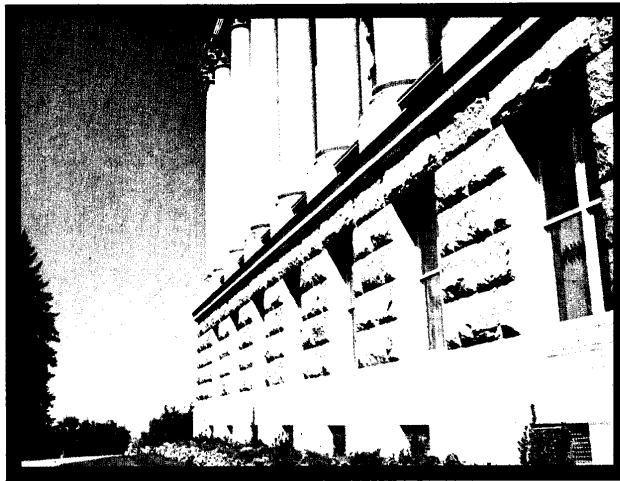
Declassified and Approved For Release 2012/05/16 : CIA-RDP73-00402R000100130007-3

Floor space exceeds 65,000 square feet. Each of the six huge vault rooms can accommodate 885,500 rolls of microfilm . . . a total storage potential of the equivalent of over 25 million 300-page volumes. An additional area is available for later expansion as needed.

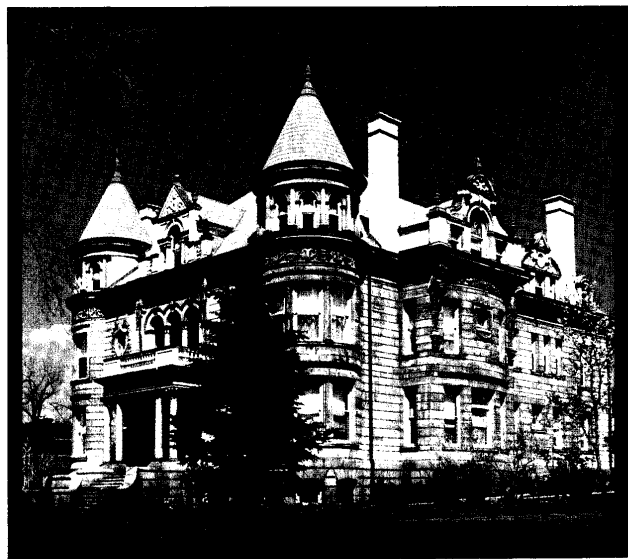
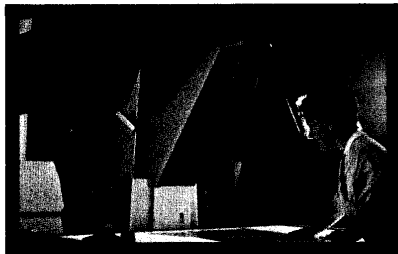


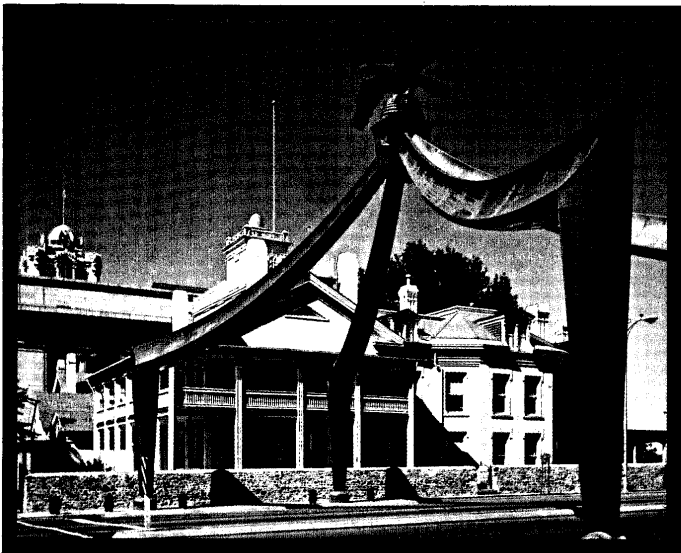
Declassified and Approved For Release 2012/05/16 : CIA-RDP73-00402R000100130007-3

ARCHIVES
HISTORICAL
SOCIETY



Hundreds of documents — published works and manuscripts, family diaries, histories, and numerous displays of relics, treasures, heirlooms — greet the visitor of the Utah State Historical Society. Many of the personal notes and memoranda of the early Utah settlers can be studied here.

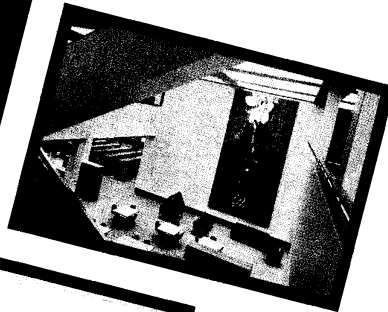




BEEHIVE HOUSE PIONEER VILLAGE

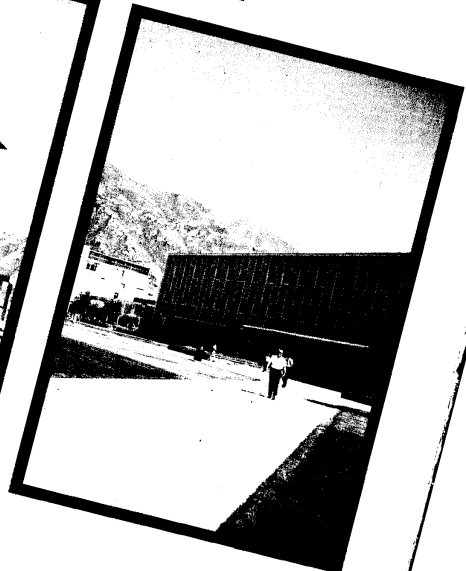
The Mormon pioneers and their descendants wrote an exciting part of western history. Museum facilities throughout the Salt Lake Valley provide an insight into their lives and hardships. Books and publications in addition to many actual items used by freedom-seekers, provide many hours of fascinating viewing and reading.





LIBRARIES

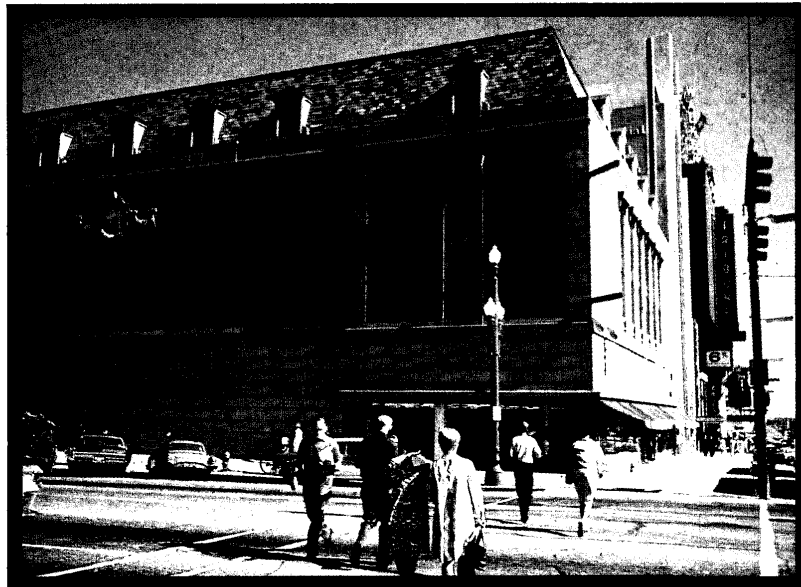
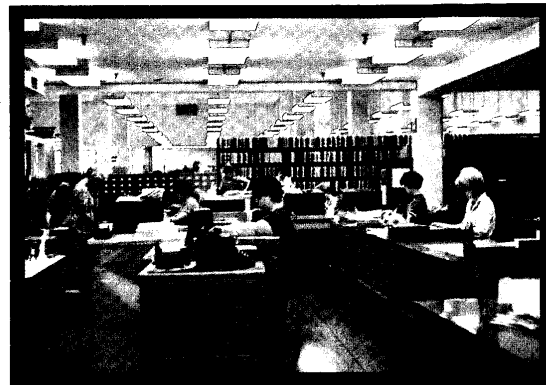
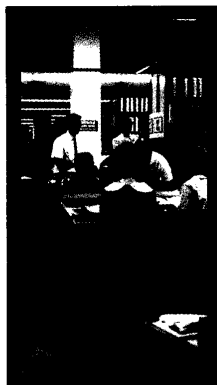
The recently completed University of Utah Library offers abundant data on all subjects. The library features technical departments, legal materials and many historical records. Brigham Young University, operated by The Church of Jesus Christ of Latter-day Saints, located in Provo, 50 miles south of Salt Lake City, has one of the finest libraries relating to Utah and Church history records. The Salt Lake City Public Library, also recently completed, is a full-library center.



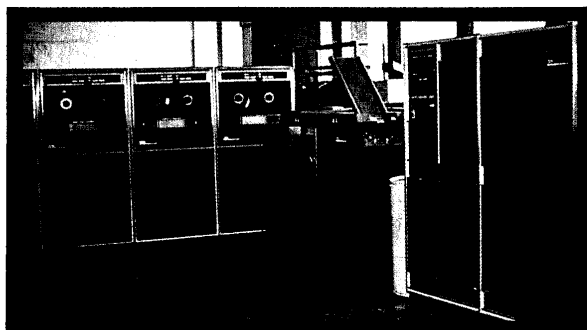
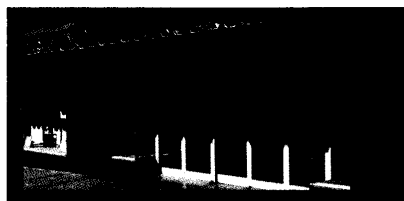
THE GENEALOGICAL SOCIETY

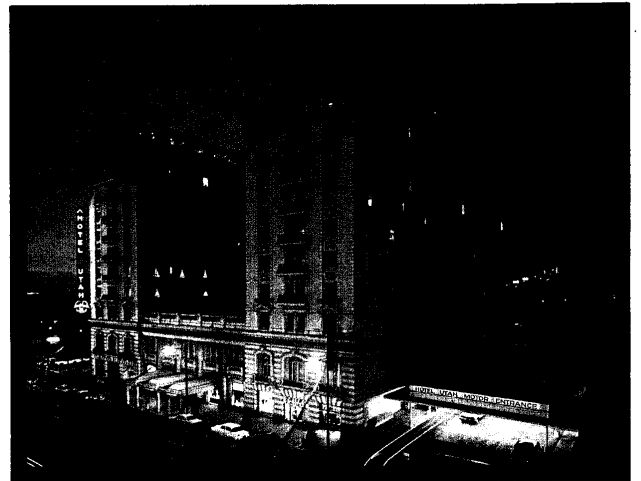
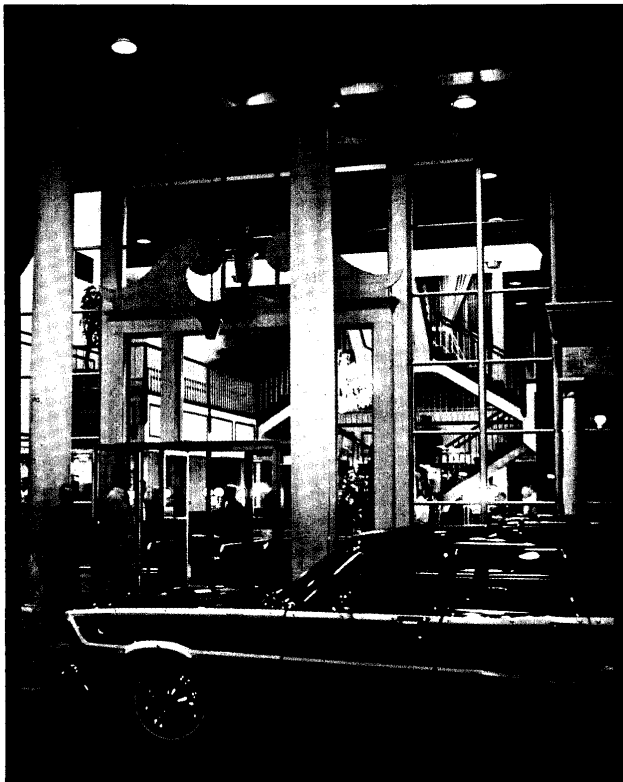
The Genealogical Society operates perhaps the largest genealogical library in the world. It has an archive of six million family group sheets, with 36,000,000 index cards. Visitors are astounded by the copious information available.

Organized in 1894 under the sponsorship of The Church of Jesus Christ of Latter-day Saints, The Genealogical Society celebrates its Diamond Jubilee Anniversary during 1969.



Special manuscript histories and publications, over 80,000 volumes, are displayed on open shelves for the convenience of researchers. Each month more than 200 new volumes are added to this collection. Over 250 reading machines are available for use of its huge microfilm collection. Although a private library of The Genealogical Society, this "genealogical treasure house of the world" is available to the public without charge and without regard to race or religious affiliation.



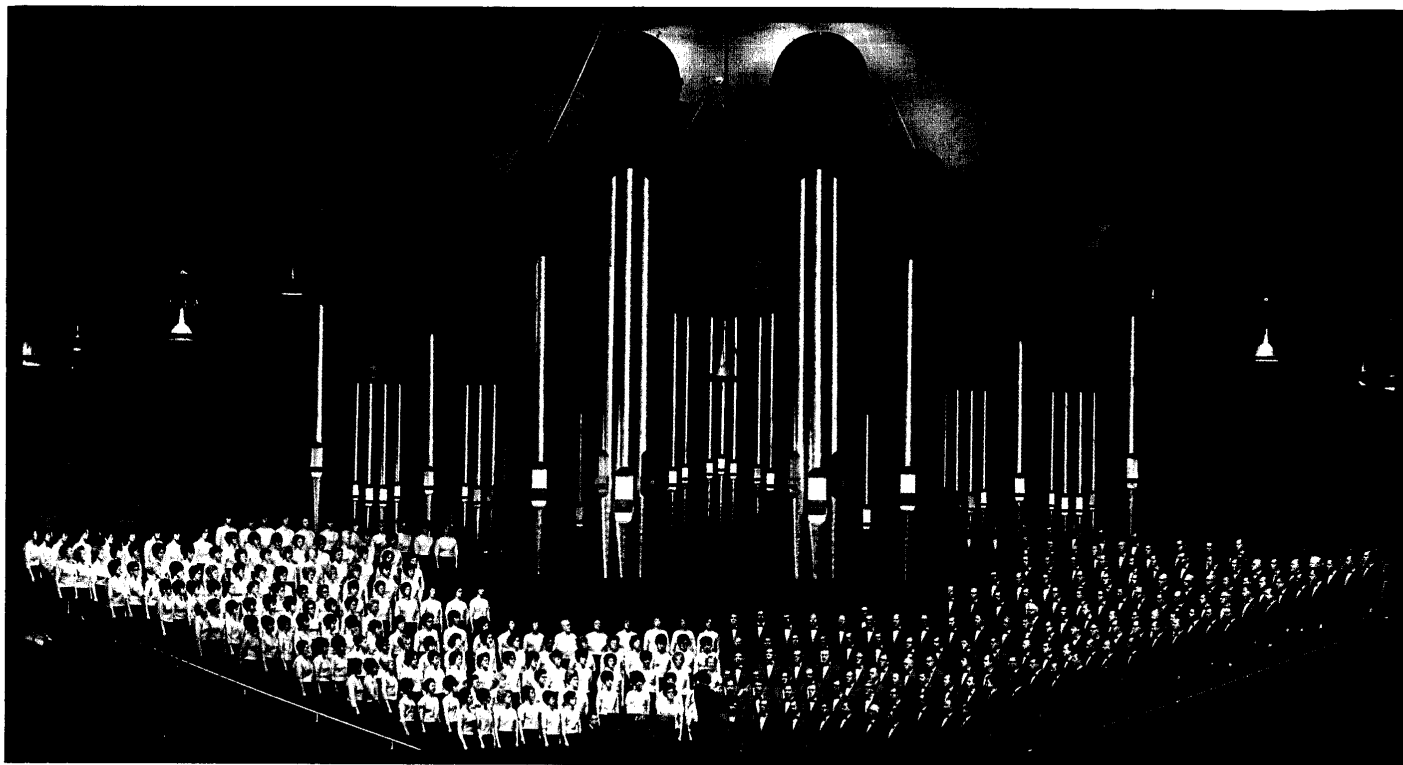


ACCOMMODATIONS

Major motels and several large hotels are located in Salt Lake City. Additional accommodations for the convention will be available in private homes and university housing.



Declassified and Approved For Release 2012/05/16 : CIA-RDP73-00402R000100130007-3



TOURS

Regular and special tours will be scheduled throughout the convention period, providing numerous opportunities to visit many outstanding places and to enjoy performances of the famed Mormon Tabernacle Choir and the renowned Utah Symphony Orchestra.

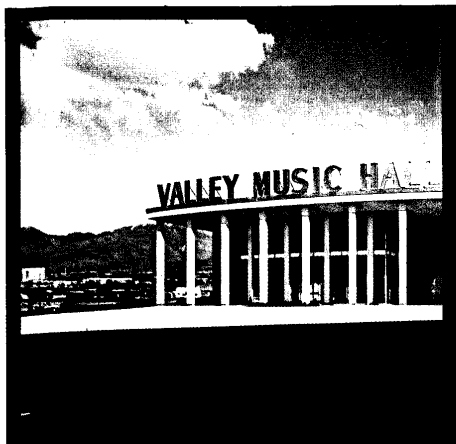
Declassified and Approved For Release 2012/05/16 : CIA-RDP73-00402R000100130007-3



Culturally, Salt Lake City is rich in the field of fine arts . . .
ballet . . . theatre . . . art . . . music.
The populace is a composite of many nationalities. The LDS
Church, because of the efforts of its many missionaries throughout
the world, is comprised of many converts.
Each of these immigrants has brought with him the
culture and personality of his country and in
Salt Lake City these distinct characteristics
contribute significantly to the cultural arts.



Declassified and Approved For Release 2012/05/16 : CIA-RDP73-00402R000100130007-3

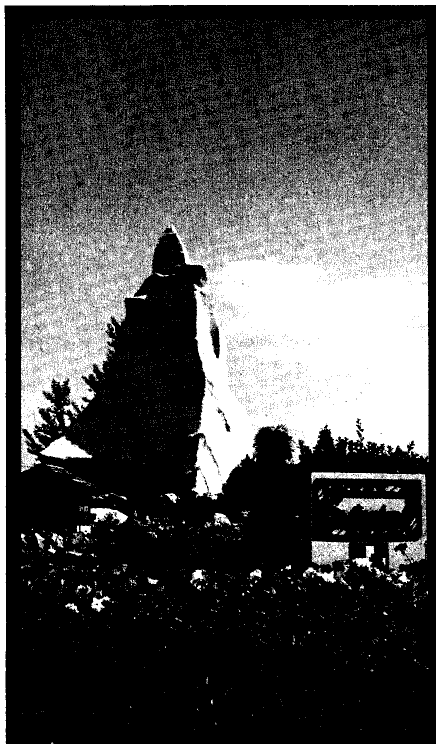


Professional entertainment ranging from folk singers to Broadway plays is offered regularly in the Valley Music Hall in North Salt Lake. On the University of Utah campus the Pioneer Memorial Theater, a replica of the historical Salt Lake Theater of early years, hosts numerous stage productions, musical programs, special events, presented by university and professional groups.

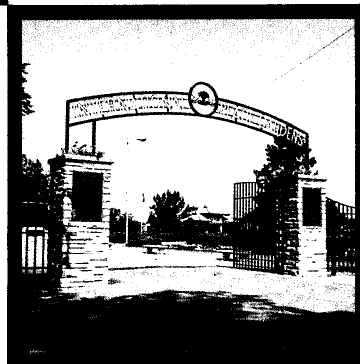


Declassified and Approved For Release 2012/05/16 : CIA-RDP73-00402R000100130007-3

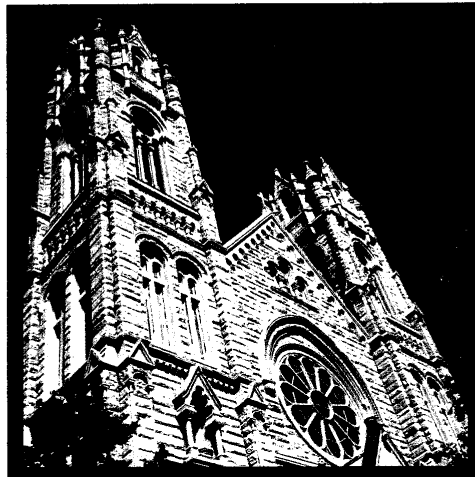
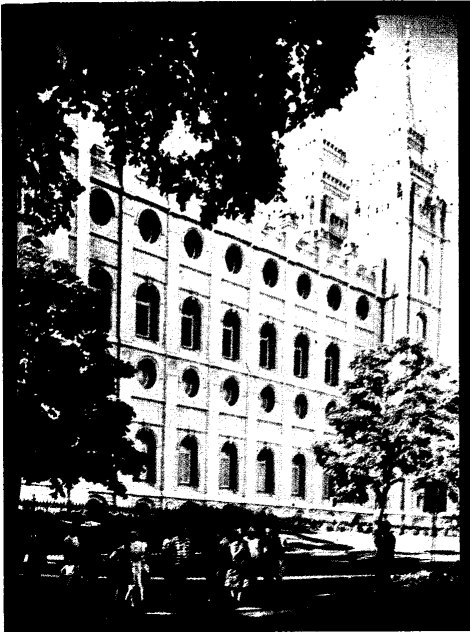
Declassified and Approved For Release 2012/05/16 : CIA-RDP73-00402R000100130007-3



Several art galleries, featuring works of recognized local and international artists, are located throughout the Valley. In Jordan Park, the memorable Peace Gardens, featuring special exhibits of landscaping and flower garden beauty of many countries of the world, provide a place of meditation for international peace.

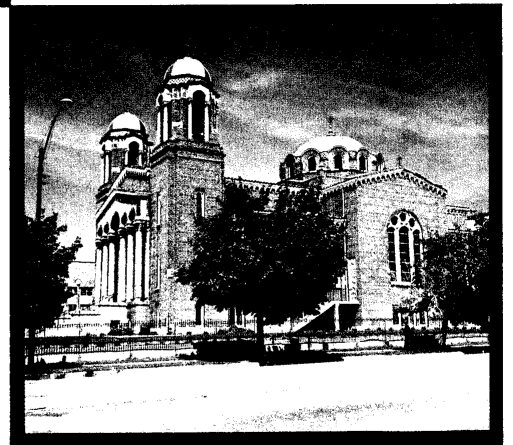
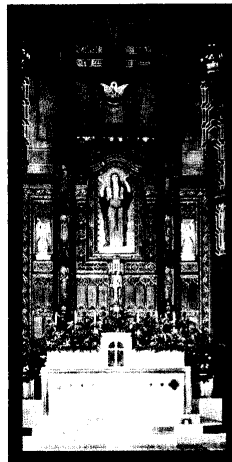


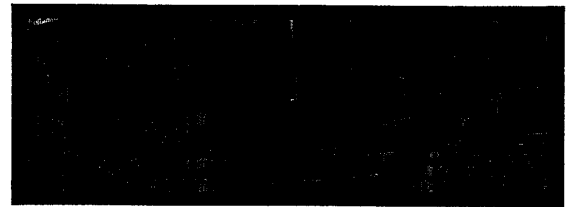
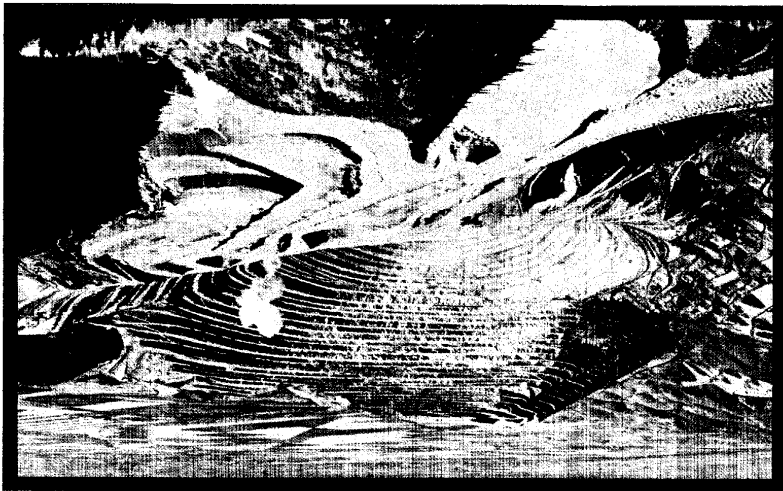
Declassified and Approved For Release 2012/05/16 : CIA-RDP73-00402R000100130007-3



CHURCHES

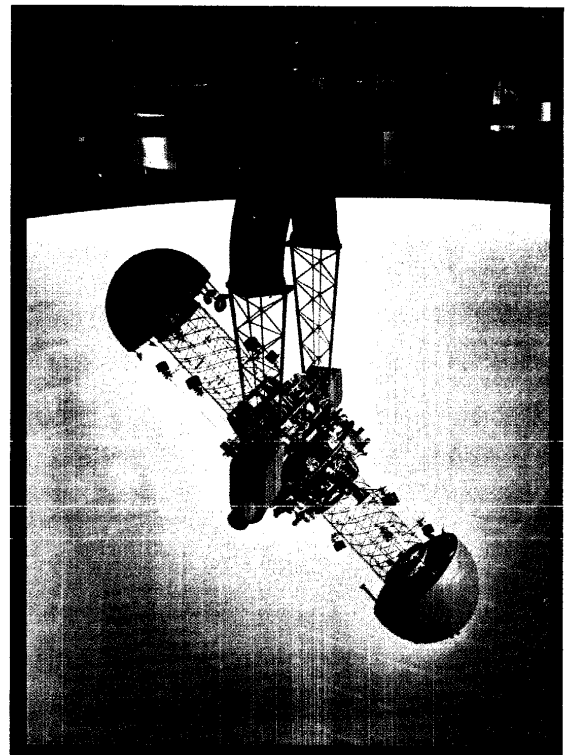
Although founded by the Mormons in 1847, Salt Lake City is a multi-church community. The bells of the Cathedral of the Madeleine greet thousands of Catholic worshippers. Many faiths — Presbyterian, Unitarian, Baptist, Lutheran, Jewish, Buddhist, Episcopalian, Greek Orthodox, and others — are well represented in the city's populace.



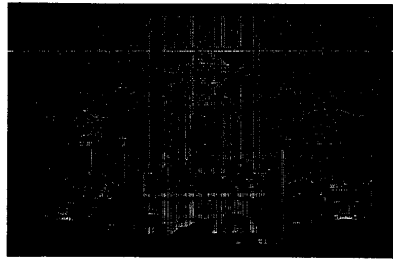


Wherever you go, whether along the tree-lined walks of the residential areas, on the wide streets of the cities, through the winding beauty of nearby canyons, over the vastness of the great deserts, among the sculptured magnificence of colossal rock formations, or to relax in the "unsinkable" waters of Great Salt Lake . . . you know you are in an unusual place . . . the "different world of Utah." The world-famous Kennecott Bingham Copper Mine continues to produce valuable metals for industry. Visitors marvel at the scope of this venture . . . the immensity of the tiered, open pit. The Hansen Planetarium invites the visitor to witness the wonders of the universe. Informative tours and programs are regularly scheduled.

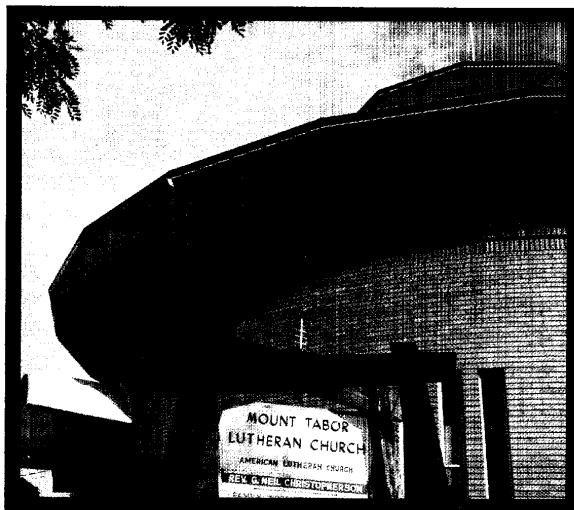
UTAH



Declassified and Approved For Release 2012/05/16 : CIA-RDP73-00402R000100130007-3



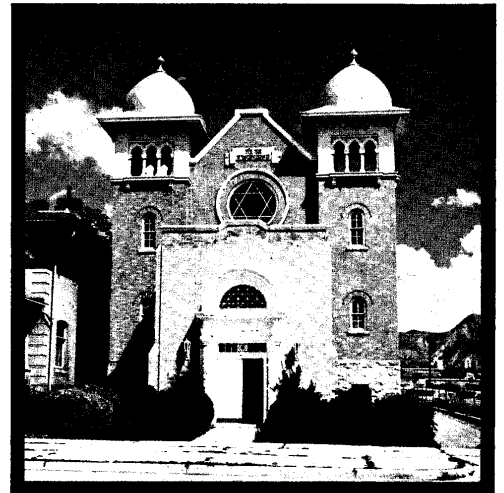
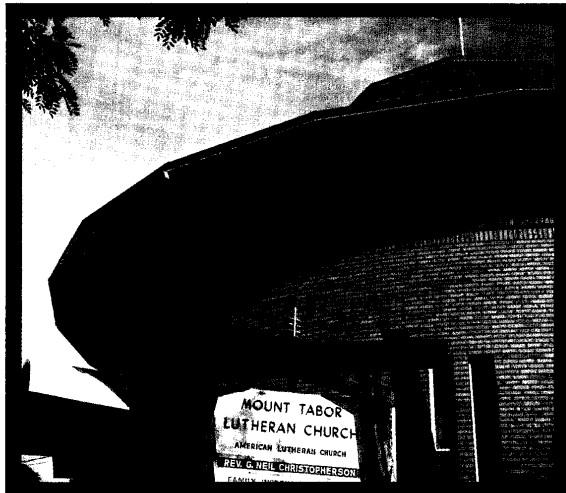
Community cooperation is evidenced by valley-wide programs that encompass citizens of all religious denominations. Salt Lake City was born because people wanted religious freedom. Today, this important heritage of freedom is the way of life for Salt Lakers and their fellow Utahns, for each knows that unity is an important part of community progress.

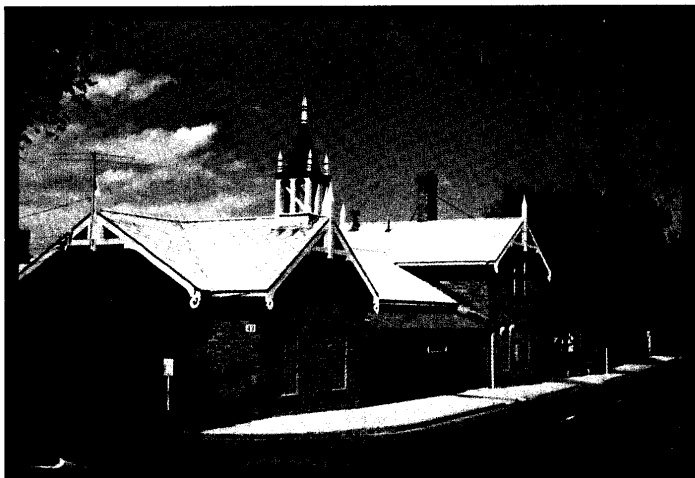
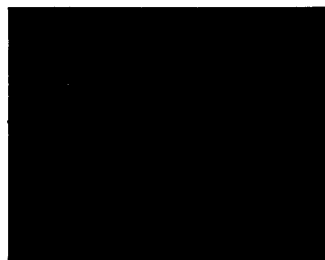


Declassified and Approved For Release 2012/05/16 : CIA-RDP73-00402R000100130007-3



Community cooperation is evidenced by valley-wide programs that encompass citizens of all religious denominations. Salt Lake City was born because people wanted religious freedom. Today, this important heritage of freedom is the way of life for Salt Laker and their fellow Utahns, for each knows that unity is an important part of community progress.



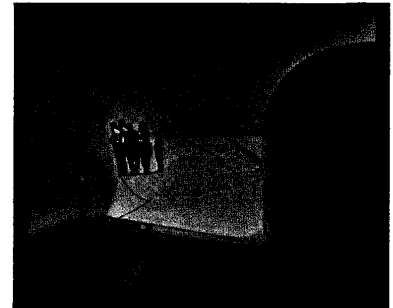


The colorful hike up the winding asphalt trail to Timpanogos Cave is a rewarding experience, climaxed by the beauty and coolness of deep caverns.

In the high Wasatch Mountains, Alta, Brighton, and Park City ski resorts offer year-round activities, with chair-lift rides, challenging slopes, comfortable lodgings and food facilities.

Adjacent to the University of Utah is historic Fort Douglas, well known to many World War II inductees. The nearby University Medical Center and Cancer Research Complex are set high on the foothills of the mountains.

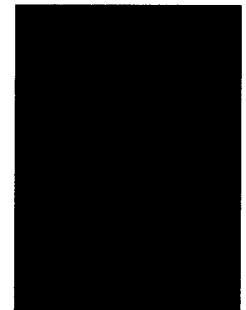
The popular Hogle Zoo attracts thousands yearly, with its "freedom" cages. Visitors may step next door to the historical "This is the Place" monument, a tribute to the Mormon founders.



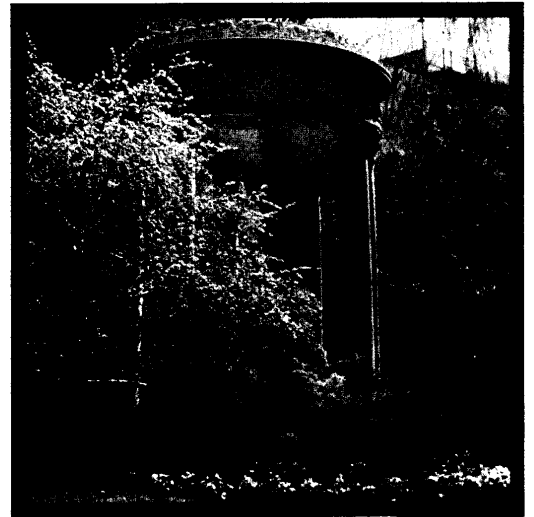
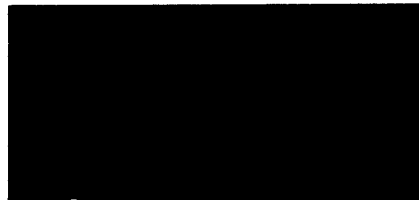
Overlooking Salt Lake Valley, the University of Utah offers diversified educational opportunities to nearly 20,000 students.

In Provo, 50 miles to the south, more than 22,000 students of all races, nationalities, and religions attend Brigham Young University, part of the educational system of The Church of Jesus Christ of Latter-day Saints. Logan, in the northern part of the state, is the site of Utah State University. Utah is proud of its high educational standards.

Wild game, excellent stream and lake fishing, bounteous farmlands and orchards, spectacular canyons . . . all are within a few minutes of downtown Salt Lake City. To the west, long stretches of hard-packed, white salt lead you to the world-famous Bonneville Salt Flats, an experimental center for international vehicle research. Hundreds of automotive speed records have been set here.



The highway systems throughout Utah make Salt Lake City the hub of cross-country travel. U.S. Highway 40 enters from the east, down through winding Parley's Canyon, making your entrance to Salt Lake City a panorama of beauty as you drive over the crest of the mountains.



Highways 6 and 50 bring visitors into Salt Lake through the southeast, while U.S. 89 and 91 run north and south.

The new interstate program has brought convenient freeways, providing quick access to every corner of the valley.

Major railroads and bus companies, as well as airlines, have terminals within the city limits.

This is Utah . . . a **different** world! And specifically, this is Salt Lake City . . . home of happy people . . . industry . . . recreation . . . education . . . scenic splendor.

A green jewel nestled in the snow-capped mountains of western America . . . an ever-growing oasis in an ever-growing west . . . your host for the

**WORLD CONFERENCE
ON RECORDS**

and

**CONVENTION AND
SEMINAR ON GENEALOGY.**

