

DIRECT ALL ORDERS AND INQUIRIES TO:
THE MOSLER SAFE COMPANY

Government Sales Division
1401 Wilson Blvd., Arlington, Virginia 22209
525-5800 (Area Code 703) • Wire: FAX (above address)

Contract Number GS-00S-13509
July 1, 1972 through June 30, 1973

General Services Administration
Federal Supply Service

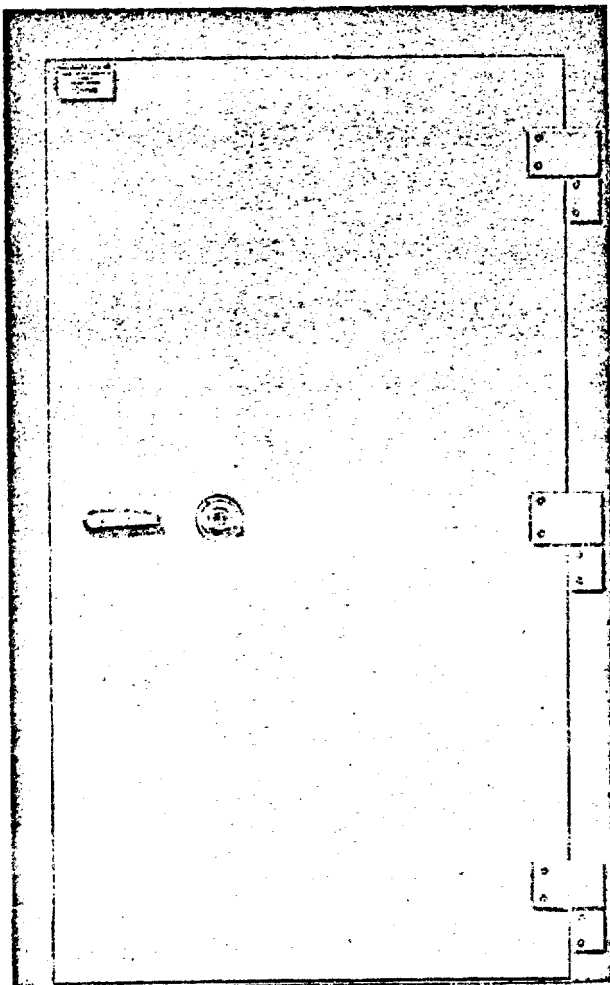
JULY 1, 1972 THROUGH JUNE 30, 1973

"CLASS 5"

SECURITY VAULT DOOR

— AVAILABLE WITH DAY GATE —

(Optional Equipment)



**GENERAL SERVICES ADMINISTRATION
APPROVED
SECURITY VAULT DOOR
Mosler**

PROTECTION

This is a U.S. Government Class 5 Vault Door which has been tested and approved by the Government under Fed. Spec. AA-D-600B. It affords the following security protection:

- 30 MAN-MINUTES AGAINST SURREPTITIOUS ENTRY.
- 10 MAN-MINUTES AGAINST FORCED ENTRY.
- 20 MAN-HOURS AGAINST MANIPULATION OF THE LOCK.
- 20 MAN-HOURS AGAINST RADIOLOGICAL ATTACK.

The protection certified above applies only to the door and not to the vault proper.

Federal Specification AA-D-600B

Approved For Release 2001/08/07 : CIA-RDP78-06501A000300020017-8
Right Swing Illustrated

ATT. "D"

SPECIFY FEDERAL STOCK NUMBER
 FOR EACH VOLT DOOR ORDERED

Approved For Release 2001/08/07 : CIA-RDP78-06501A000300020017-8

Federal Stock No.	Description	Weight	Shipping Weight	F.O.B. Hamilton, Ohio
7110-935-1884	Hand Change Combination Lock Right Swing Without Optical Device	1340 lbs.	1700 lbs.	\$1584.50
7110-935-1881	Hand Change Combination Lock Left Swing Without Optical Device	1340 lbs.	1700 lbs.	1584.50
7110-935-1871	Hand Change Combination Lock Right Swing With Optical Device *	1340 lbs.	1700 lbs.	1593.50
7110-935-1872	Hand Change Combination Lock Left Swing With Optical Device *	1340 lbs.	1700 lbs.	1593.50
7110-935-1885 ✓	Key Change Combination Lock Right Swing With Optical Device *	1340 lbs.	1700 lbs.	1593.50
7110-935-1886	Key Change Combination Lock Right Swing Without Optical Device	1340 lbs.	1700 lbs.	1584.50
7110-935-1882 ✓	Key Change Combination Lock Left Swing With Optical Device *	1340 lbs.	1700 lbs.	1593.50 <i>1699.70</i>
7110-935-1883	Key Change Combination Lock Left Swing Without Optical Device	1340 lbs.	1700 lbs.	1584.50

* The optical device referred to above is also known as a "peep sight." It is a wide angle tubular optical device installed in the center of the outside of the door approximately 60" from vault floor. Customer should specify whether the device shall permit observation from the inside to the outside of the vault or from the outside to the inside of the vault.

FOB POINT: HAMILTON, OHIO

QUANTITY DISCOUNT:

- \$ 7,500.00 to 14,999.99 — 2%
- 15,000.00 to 25,000.00 — 3%

PROMPT PAYMENT DISCOUNT: 1/2% 20 Days

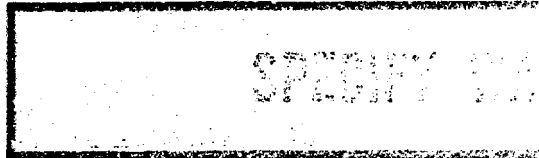
COLOR: GRAY TEXTURE (FED. STD. NO. 595)

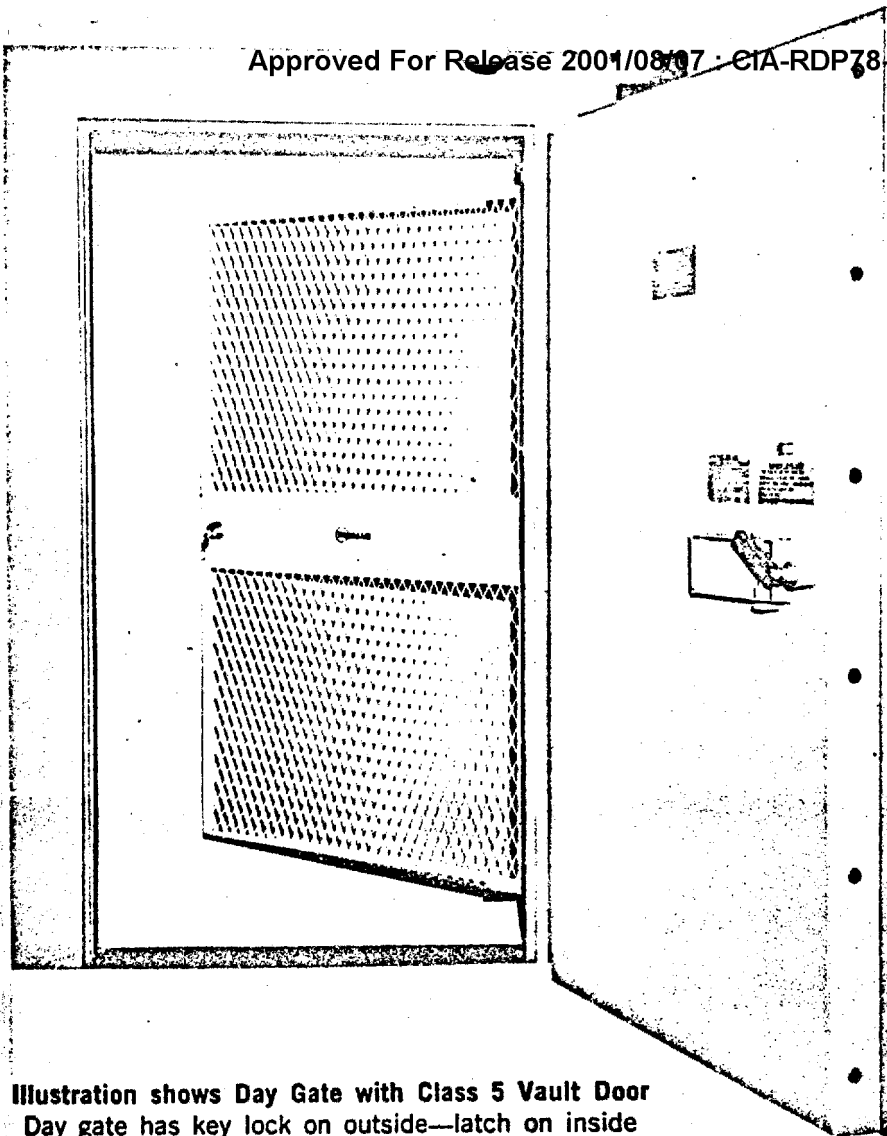
DELIVERY: 60 DAYS

**GOVERNMENT MAXIMUM ORDER LIMITATION PER ORDER
FOR THIS CONTRACT IS \$25,000.00**

Approved For Release 2001/08/07 : CIA-RDP78-06501A000300020017-8

ONE YEAR WARRANTY ON WORKMANSHIP AND





DAY GATE

Day Gate designed for use with the Class 5 Vault Door. The Day Gate swings into the vault area and is hinged on the same side as the vault door. (When ordering Day Gate customer must specify swing of the vault door to which the Day Gate will be installed.)

Price: \$380.00

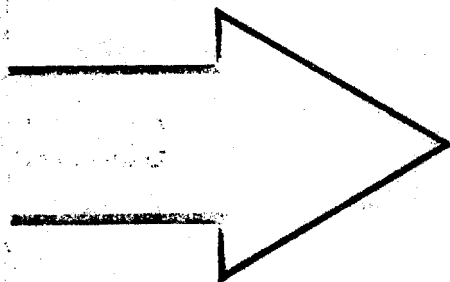
FOB HAMILTON, OHIO

Net Weight: 130 lbs.

Shipping Weight: 250 lbs.

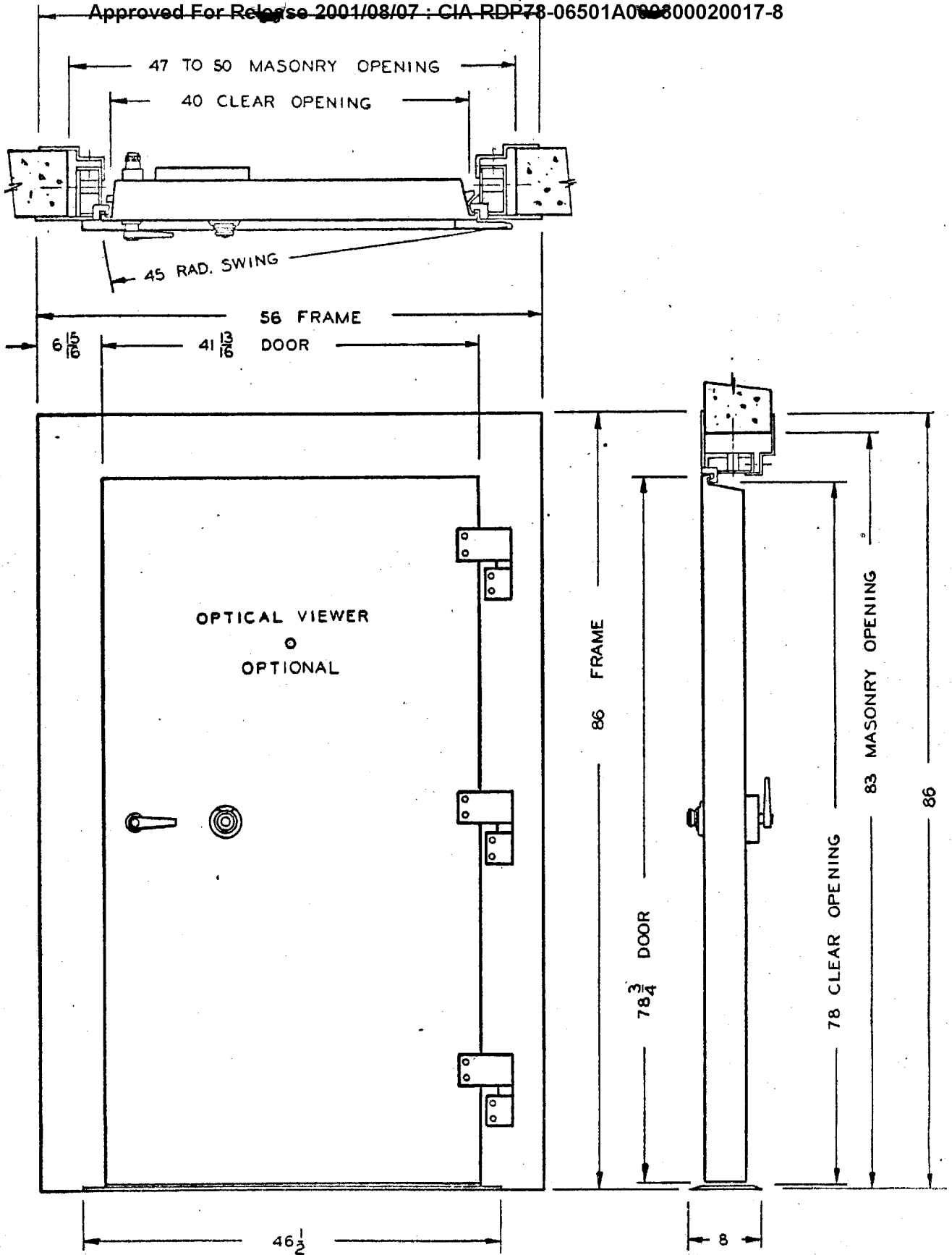
(Optional—Not under FSS Contract)

Illustration shows Day Gate with Class 5 Vault Door
Day gate has key lock on outside—latch on inside



SPECIFY WALL THICKNESS

Customer must specify the finished thickness of the vault wall in order that proper adjustable wall flange may be provided. Specify 6-7-8-9-10-11-12 or 14-inch wall. Flanges provide for + or - 1/2-inch variation.



CLASS 5 VAULT DOOR