

**SECRET**

OUT 52053

1

P 142059Z  
 FM CIA WASHDC  
 TO RUCSBR/SAC OFFUTT AFB, OMAHA, NEB  
 RUCVAB/4080 STRAT WG, OL 19, BARKSDALE AFB, LA  
 RUEAHQ/DIAXX  
 RUECYG/NAVY PIC  
 RUWBKG/15TH AF, MARCH AFB, RIVERSIDE, CALIF  
 RUWGAA/2D RTS, BARKSDALE AFB, LA  
 RUWGAA/2AF, BARKSDALE AFB, LA  
 DA GRNC  
 BT

1963 OCT 15 12 05Z

**PRIORITY**

15 OCT 1963

HFS ☒  
 CJS ☒  
 CFC ☒  
 BNS ☒  
 ACL ☒  
 \_\_\_\_\_

**SECRET**

CITE CIA-Z-951

15TH AF (FOR DI); SAC (FOR DIM, BRASS KNOB, DOCR, DM 4) 2D AF  
 (FOR DI). FROM NATIONAL PHOTOGRAPHIC INTERPRETATION.

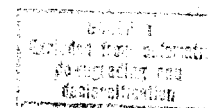
1. CAMERA B 8 WAS USED IN MISSION 3748 FLOWN ON 12 OCTOBER  
 1963; PROCESSING WAS ACCOMPLISHED BY BARKSDALE.

Grace (File)

## 2. ORIGINAL NEGATIVE:

- A. THE EXPOSURE IS ADEQUATE AND THE RESOLUTION IS GOOD.
- B. 9R SIDE: OUTBOARD EDGE FOG IS PRESENT THROUGHOUT THE MISSION. SMALL STATIC MARKS ARE APPARENT ALONG THE OUTBOARD EDGE OF THE FILM FROM FRAMES 600 TO 899. FOG CAUSED BY A DIAGONAL LIGHT LEAK IS APPARENT ON FRAME 1778.
- C. 9L SIDE: MINUS DENSITY DOTS 1.55" APART AND PARALLEL TO THE MAJOR AXIS OCCUR 0.35", 1.50", 3.40", 6.65", AND 7.80" FROM THE INBOARD EDGE IN THE FIRST 200 FRAMES. AN INTERMITTENT

Declassification Review by NGA/DoD

**SECRET**

- 2 -

MINUS DENSITY STREAK 0.1" FROM THE INBOARD EDGE IS APPARENT THROUGHOUT THE MISSION. SHORT, SCATTERED PLUS DENSITY STREAKS ARE IN EVIDENCE IN FRAMES 258 TO 499.

D. BOTH SIDES: INBOARD EDGE FOG, MINOR PROCESSING STREAKS AND FOG ALONG THE OUTBOARD EDGE OF THE FORMAT EXIST THROUGHOUT BOTH SIDES OF THE MISSION. THERE IS A TOTAL OF 2119 TITLED FRAMES ON EACH SIDE OF THE MISSION.

E. THERE WERE NO MAJOR CAMERA OR PROCESSING MALFUNCTIONS OTHER THAN MENTIONED ABOVE.

3. POSITIVE:

- A. THE PI SUITABILITY IS GOOD.
- B. THE PRINTING AND PROCESSING OF THE POSITIVE IS GOOD.
- C. CLOUDS OBSCURED OR DEGRADED 15 PERCENT OF THE MISSION.

SCP-1

-END OF MESSAGE-

1