

SECRET

OUT56118

multi

P 062241Z
 FM NPIC WASHDC
 TO RUCSC/SAC OFFUTT AFB OMAHA NEB
 RUCVAA/4080 STRAT WG OL 19 BARKSDALE AFB LA
 RUCVAA/2D RTS BARKSDALE AFB LA
 RUEKDA/DIA WASHDC
 RUECYH/NAVRECONTECHSUPPCEN SUITLAND MD
 RUEPIA/CIA WASHDC
 RUWBKN/15TH AF MARCH AFB RIVERSIDE CALIF
 RUWGAA/2AF BARKSDALE AFB LA
 BT
 S E C R E T CITE NPIC 4899.

1965 JUL 6 23 12Z

Declassification Review by NGA/DoD

15TH AF (FOR DI), SAC (FOR DIM/GOLDEN TREE/DOCR, DM 4) 2D AF (FOR DI).

1. CAMERA B 122 WAS USED IN MISSION 8027 FLOWN ON 2 JULY 1965. PROCESSING WAS ACCOMPLISHED AT BARKSDALE.

2. ORIGINAL NEGATIVE:

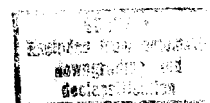
A. THE EXPOSURE WAS ADEQUATE AND THE RESOLUTION IS GOOD.

B. 9R SIDE: A ROW OF MINUS DENSITY SPOTS RUNS PARALLEL TO AND 1.45" FROM THE OUTBOARD EDGE OF THE FILM THROUGHOUT THE MATERIAL. THE SPOTS ARE SPACED 1.55" APART. FRAMES 0001 TO 0299 CONTAIN MINOR ROLLER-INDUCED STATIC DISCHARGES ON THE INBOARD EDGE. A MANUFACTURER'S SPLICE IS PRESENT IN FRAME 1962. FRAMES 1240, 1251 TO 1254 AND 1256 CONTAIN A NUMBER OF VERTICAL, EDGE-TO-EDGE CREASES.

C. 9L SIDE: A TRANSVERSE FOG PATTERN IS PRESENT IN FRAME 002. ROWS OF MINUS DENSITY DOTS SPACED 1.7" APART AND LOCATED 0.35", 0.40", 1.5", 3.2", 3.7", 6.2", 7.7", AND 8.0" FROM THE INBOARD EDGE ARE PRESENT IN THE FIRST 10 FRAMES. THE ROW OF

7 JUL 1965

COPIES RECEIVED		
By No.	Office	Act.
✓	File	
	OS	
	ADMIN	
	SEC BR	
	P&DS	
	CSD	
	IPD	
	PD	
	PSD	
	PSD-ICB	
3,4	TID	✓
	PID	
	PAG	
	DIAXX-4	
	SPAD	
	NSA-LO	
	DIA-AP	

SECRET

-2-

MINUS DENSITY DOTS AT 0.35" FROM THE INBOARD EDGE CONTINUES TO FRAME 299. THE OUTERMOST PART OF THE DATA CLOCK IMAGE IS CUT OFF BY THE EDGE OF THE FILM THROUGHOUT THIS SIDE. CREASES EXIST NEXT TO THE HEAT SPLICES AT THE BEGINNING OF PARTS TWO AND THREE. A MANUFACTURING SPLICE IS CONTAINED WITHIN THE FORMAT OF FRAME 1086 AND A SHADOWGRAPH OF THE SPLICE IS PRESENT IN FRAME 1084. SEVERAL SCRATCHES AND ASSOCIATED MINUS DENSITY STREAKS LOCATED WITHIN THE 2.0" ADJACENT TO THE OUTBOARD EDGE OF THE FILM ARE PRESENT FROM FRAME 2400 TO 2481.

D. BOTH SIDES: THE FIRST FRAME DATA CLOCK COUNTER IS DOUBLE IMAGED AND THE FRAME IS TITLED TWICE. THUS, IT HAS TWO FRAME NUMBERS: 0000 AND 0001. MINOR EDGE STATIC IS PRESENT ALONG THE INBOARD AND OUTBOARD SIDES OF THE FILM THROUGHOUT THE MISSION. THE LAST TITLED FRAME ON EACH SIDE IS NUMBERED 2481.

E. THERE WERE NO MAJOR CAMERA OR PROCESSING MALFUNCTIONS DURING THE MISSION.

3. POSITIVE:

A. THE PI SUITABILITY IS GOOD WHERE NOT DEGRADED BY CLOUDS.

B. THE PRINTING AND PROCESSING WAS GOOD.

C. CLOUDS OBSCURED OR DEGRADED APPROXIMATELY 70 PERCENT OF THE MISSION.

GP-1

S E C R E T

-END OF MESSAGE-