

NPIC/R-1570/63
November 1963



PHOTOGRAPHIC INTERPRETATION REPORT

I P I R
MISSION 3243
17 NOVEMBER 1963

Declass review-NIMA/DOD

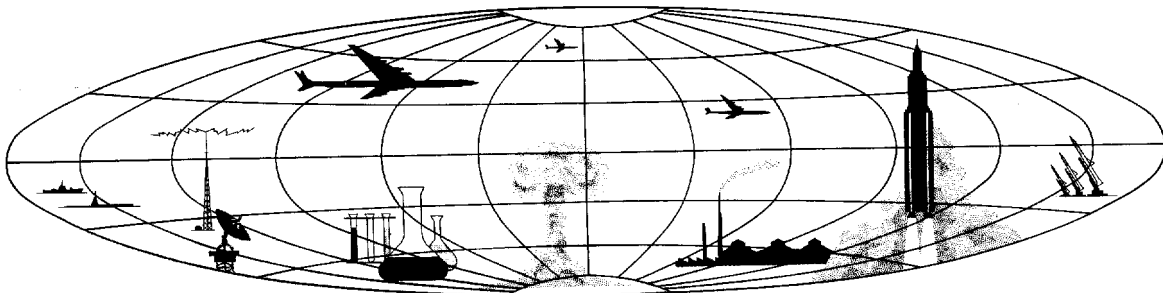


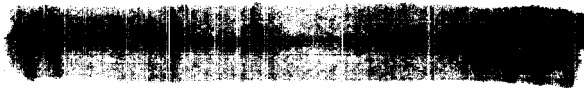
CIA



DIA

NATIONAL PHOTOGRAPHIC INTERPRETATION CENTER





WARNING

This document contains information affecting the national defense of the United States, within the meaning of Title 18, sections 793 and 794, of the U.S. Code, as amended. Its transmission or revelation of its contents to or receipt by an unauthorized person is prohibited by law.

SECRET
NO FOREIGN DISSEM

NPIC/R-1570/63

NATIONAL PHOTOGRAPHIC INTERPRETATION CENTER

IMMEDIATE PHOTOGRAPHIC INTERPRETATION REPORT

PREFACE

THIS REPORT REPRESENTS THE PRELIMINARY INTERPRETATION OF MISSION 3243, FLOWN 17 NOVEMBER 1963, AND DEALS PRIMARILY WITH THE HIGHEST PRIORITY INTELLIGENCE ITEMS APPEARING IN THE COMOR TARGET LIST. HOWEVER, IT ALSO INCLUDES OTHER SIGNIFICANT TARGETS OBSERVED DURING THE SCAN OF PHOTOGRAPHY. TARGETS REPORTED ARE IN NORTH VIETNAM UNLESS OTHERWISE INDICATED IN THE HEADER, AND ARE ARRANGED BY SUBJECT, WITHIN EACH SUBJECT BY COMOR TARGET NUMBER WHICH APPEARS AT THE END OF THE HEADER LINE. SIGNIFICANT TARGETS NOT IN THE COMOR LIST ARE INCLUDED UNDER THE APPROPRIATE SUBJECT AND AFTER THE COMOR LISTED TARGETS.

CLOUD-COVER THROUGHOUT MISSION WAS APPROXIMATELY 35 PERCENT AND CONSISTED OF SCATTERED CLOUDS. SYMBOLS USED TO INDICATE CONDITIONS WHICH AFFECT THE APPEARANCE OF THE TARGET ON THE PHOTOGRAPHY ARE AS FOLLOWS -- C (CLEAR), SC (SCATTERED CLOUDS), HC (HEAVY CLOUDS), H (HAZE), CS (CLOUD SHADOW), O (OBLIQUITY), PQ (POOR IMAGE QUALITY).

--AIRFIELDS--

25X1A

DIEN BIEN PHU AIRFIELD 2123N 10301E

ONE NM NNW OF DIEN BIEN PHU.
4,000 X 90 FT NNW/SSE LATERITE AND SOD RUNWAY,
SERVICEABLE, WITH A 900 FT SOD OVERRUN ON SSE END AND
950 FT SOD OVERRUN ON NNW END.
THREE OCCUPIED LIGHT 4-GUN AAA SITES SITUATED FROM SSE
END OF RUNWAY AS FOLLOWS -- 500 FT SSW, .5 NM SSE,
AND .6 NM ESE.
AIRCRAFT -- NONE OBSERVED.

25X1D

SECRET
NO FOREIGN DISSEM

NPIC/R-1570/63

25X1A

HAIPHONG/CAT BI AIRFIELD 2049N 10643E

3 NM SE OF HAIPHONG.
ONLY EASTERN THIRD OF AIRFIELD VISIBLE DUE TO
INCOMPLETE PHOTO COVERAGE.
AIRCRAFT -- NONE OBSERVED.

25X1D

HAIPHONG/KIEN AN AIRFIELD 2048N 10636E

5 NM SW OF HAIPHONG.
NO APPARENT CHANGE IN FACILITIES SINCE
AIRCRAFT -- NONE OBSERVED.

25X1D

25X1D

25X1D

HANOI/GIA LAM AIRFIELD 2102N 10553E

2.3 NM NE OF CENTER OF HANOI.
6,100 X 100 FT NNE/SSW CONCRETE RUNWAY, SERVICEABLE,
AND A 5,800 X 320 FT NW/SE CONCRETE RUNWAY USED AS
PARKING AREA.
FACILITIES INCLUDE ONE HANGAR, NUMEROUS SUPPORT
BUILDINGS, AND A POL AREA ON NW END OF NW/SE RUNWAY.
TWO OCCUPIED 8-GUN AAA SITES OBSERVED, ONE .8 NM
SOUTH AND THE OTHER .5 NM WSW OF RUNWAY INTERSECTION.
AIRCRAFT -- 18 CAB AND 11 CRATE.
(SEE ATTACHMENT 1.)

25X1D

PHI DIEM (KEP HA) AIRFIELD 2123N 10640E

3 NM EAST OF KEP HA AND 5.5 NM WSW OF BIEN DONG.
2,550 X 100 FT NE/SW PACKED EARTH RUNWAY, SERVICEABLE.
PRESENT FIELD BOUNDARIES LIMIT FURTHER EXPANSION TO
3,350 FT.
SUPPORT AREA ON WEST SIDE OF FIELD CONTAINS 7 ROAD-
SERVED STORAGE-TYPE BUILDINGS (APPROXIMATELY 2,000 FT
WEST OF RUNWAY).
AIRCRAFT -- 2 PROBABLE COLT.

25X1D

SECRET
NO FOREIGN DISSEM

NPIC/R-1570/63

25X1A

PHUC YEN AIRFIELD 2113N 10548E

7 NM ESE OF PHUC YEN AT UTM COORDINATES WJ840464.
8,720 X 190 FT WNW/ESE CONCRETE RUNWAY, UNSERVICEABLE,
WITH 1,200 FT OVERRUNS AT EACH END. EXTENSIVE PILES
OF AGGREGATE ARE STORED ON THE PROBABLY COMPLETED
RUNWAY. AIRFIELD IS RAIL SERVED AND 3 CARS WERE
OBSERVED ON RAILROAD TRACK.

FACILITIES UNDER CONSTRUCTION INCLUDE A LOOP
TAXIWAY WITH 3 CROSSOVER LINKS, AN ALERT RAMP ALONG
EACH OF THE 2 OUTER CROSSOVER LINKS, AND 2 PARKING
APRONS 1,600 FT LONG, ONE AT EITHER END OF THE
TAXIWAY.

HOUSING/SUPPORT AREA IMMEDIATELY NORTH OF AIRFIELD
CONTAINS APPROXIMATELY 50 BARRACKS, APPROXIMATELY 100
STORAGE/SUPPORT BUILDINGS, A CONTROL TOWER, AND AN
OPERATIONS BUILDING.

POL AREA, 4.3 NM NNE OF AIRFIELD AT UTM COORDINATES
WJ872516, CONTAINS 3 BURIED POL TANKS UNDER
CONSTRUCTION AND 23 STORAGE/SUPPORT BUILDINGS.
FOURTEEN OTHER STORAGE/SUPPORT BUILDINGS OBSERVED
IMMEDIATELY NE OF POL TANKS AT TERMINUS OF NEW
RAILROAD SPUR. BARRACKS AREA CONTAINING 10 BARRACKS
AND 7 STORAGE/SUPPORT BUILDINGS OBSERVED SE OF POL
TANKS.

CONSTRUCTION CONTINUES ON THE SUPPORT FACILITIES.

AIRCRAFT -- NONE OBSERVED.

(SEE ATTACHMENTS 2 AND 3.)

25X1D

25X1A

LANG SON AIRFIELD 2150N 10646E

25X1D
25X1D

ONE NM SE OF LANG SON.
NO APPARENT CHANGE IN FACILITIES SINCE

AIRCRAFT -- NONE OBSERVED.

25X1D

LAI CHAU AIRFIELD 2203N 10309E

IMMEDIATELY SE OF LAI CHAU.
2,500 X 100 FT NNE/SSW PROBABLY ASPHALT RUNWAY,
APPARENTLY SERVICEABLE.
AIRCRAFT -- NONE OBSERVED.

SECRET
NO FOREIGN DISSEM

NPIC/R-1570/63

25X1D



25X1A

NA SAN AIRFIELD 2113N 10402E

.5 NM NE OF NA SAN.
4,000 X 90 FT WNW/ESE CRUSHED ROCK RUNWAY,
SERVICEABLE.
AIRCRAFT -- NONE OBSERVED.



25X1D



NGHIA LO AIRFIELD 2136N 10430E

SW EDGE OF NGHIA LO.
2,800 X 130 FT NNE/SSW GRADED EARTH RUNWAY,
UNSERVICEABLE. PORTIONS OF AIRFIELD APPEAR TO BE
OVERGROWN WITH BRUSH.
AIRCRAFT -- NONE OBSERVED.

25X1D



BAN KEUN AIRFIELD (LAOS) 1821N 10235E

SE EDGE OF BAN KEUN AND 23 NM NORTH OF VIENTIANE.
3,600 X 90 FT N/S GRADED EARTH LANDING STRIP,
SERVICEABLE. ALTHOUGH NO CONSTRUCTION ACTIVITY WAS
APPARENT AT TIME OF PHOTOGRAPHY, GROUNDS SCARS
INDICATE THAT THE RUNWAY MAY BE EXTENDED TO
APPROXIMATELY 5,200 FT.
PROBABLY ASSOCIATED MILITARY AREA AT NORTH END OF
LANDING STRIP CONTAINS 14 BARRACKS-TYPE BUILDINGS
SURROUNDED BY TRENCHES. SMALL ARMS FIRING RANGE
OBSERVED AT SOUTH END OF STRIP.
AIRCRAFT -- NONE OBSERVED.

25X1D



25X1A

SAM NEUA AIRFIELD (LAOS) 2026N 10405E

ONE NM EAST OF SAM NEUA.
3,600 X 100 FT E/W SOD RUNWAY, SERVICEABLE.
NO FACILITIES OBSERVED.
AIRCRAFT -- NONE OBSERVED.



NPIC/R-1570/63

25X1D

[REDACTED]

KEP AIRFIELD 2124N 10616E

1.5 NM SW OF KEP AND 8.7 NM NNE OF PHU LANG THUONG.
3,700 X 100 FT NE/SW PACKED EARTH RUNWAY, SERVICEABLE,
EXTENSIBLE TO 4,800 FT.
FACILITIES INCLUDE CONTROL TOWER/OPERATIONS BUILDING,
5 BARRACKS, SMALL POL STORAGE AREA, AND 9 SMALL
SUPPORT BUILDINGS.
THIRTEEN DETERIORATED REVETMENTS OBSERVED ON SOUTH
SIDE OF FIELD.
AIRCRAFT -- 4 HOUND.

25X1D

[REDACTED]

PHO KHAO KHOUAI AIRFIELD U/C (LAOS) 1823N 10247E

.4 NM WEST OF PHO KHAO KHOUAI AT UTM COORDINATES
TF651341.
E/W LANDING STRIP UNDER CONSTRUCTION, UNSERVICEABLE.
EXACT DIMENSIONS CANNOT BE DETERMINED AT THIS TIME
BUT MAXIMUM LENGTH WILL BE APPROXIMATELY 3,500 FT.
FACILITIES INCLUDE 3 SMALL BUILDINGS ON SOUTH SIDE
AND 2 PROBABLE BARRACKS ON EAST END OF AIRFIELD.
ONE TRUCK, ONE GRADER AND ONE BULLDOZER OBSERVED.
AIRCRAFT -- NONE OBSERVED.
(SEE ATTACHMENT 4.)

25X1D

[REDACTED]

-PORTS-

HAIPHONG COMPLEX 2052N 10641E

NO UNUSUAL OR SIGNIFICANT ACTIVITY OBSERVED
WITHIN COMPLEX. INDUSTRIAL AREAS APPEAR NORMALLY
ACTIVE.
VESSELS -- 6 PROBABLE SWATOW-CLASS MOTOR-GUN BOATS
(3 IN NAVAL REPAIR YARD), 5 FREIGHTERS (AT WHARVES),
AND NUMEROUS SMALL CRAFT AND BARGES.

25X1A

25X1D

NPIC/R-1570/63

-ELECTRONICS-

25X1A

DO SON, EARLY WARNING RADAR SITE 2040N 10648E

TIP OF DO SON PENINSULA AT UTM COORDINATES XH885870.
EARLY WARNING RADAR SITE COMPRISES SCR-270-TYPE
RADAR, CONTROL VAN, AND SMALL SUPPORT BUILDING ON TOP
OF HILL.

25X1D

-MILITARY ACTIVITY-

25X1A

DIEN BIEN PHU, MILITARY COMPLEX 2119N 10301E

TWENTY SEPARATE MILITARY AREAS WITHIN THE COMPLEX
CONTAIN A TOTAL OF APPROXIMATELY 120 BARRACKS AND
30 ADMINISTRATION, 155 STORAGE, AND 165 SUPPORT
BUILDINGS, A PROBABLE HOSPITAL, A MOTOR POOL, AND
NUMEROUS ASSOCIATED BUILDINGS.
FOUR TRUCKS OBSERVED THROUGHOUT COMPLEX.

25X1D

25X1A

NUI DOI KIEN (SON TAY), MIL BKS & STGE AREAS 2107N 10528E

MILITARY COMPLEX ON NE SIDE OF NUI DOI KIEN AND 3 NM
SSW OF SON TAY. (REFERENCE POINT IS CENTER OF TONG
AIRFIELD 21-06N 105-27E).

AREA A (.9 NM EAST) -- BARRACKS AND STORAGE AREA
CONTAINS 4 MULTISTORY BARRACKS, 2 MESS HALLS, AND ONE
ADMINISTRATION, 10 LARGE STORAGE, AND APPROXIMATELY 5
SMALLER ASSOCIATED BUILDINGS.

AREA B (1.8 NM NE) -- FENCED AREA CONTAINS 12 BARRACKS
AND 17 SUPPORT BUILDINGS. ANOTHER FENCED AREA TO
THE SOUTH CONTAINS APPROXIMATELY 20 BUILDINGS. LARGE
MULTI-WING ADMINISTRATION BUILDING OBSERVED
IMMEDIATELY NORTH.

AREA C (ONE NM ESE) -- SECURED EXPLOSIVES STORAGE
AREA CONTAINS 4 LARGE AND 2 SMALL REVETTED EXPLOSIVES
STORAGE BUILDINGS. TWELVE PROBABLE CARGO TRUCKS
OBSERVED IN CLOUD-FREE AREAS.

NPIC/R-1570/63

25X1D



25X1A



VAN HOI AREA, MILITARY AREAS 2134N 10452E

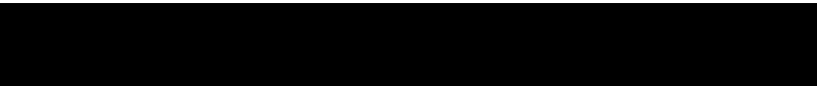
THREE SECURED AREAS IN VAN HOI AREA. (AREAS REFERENCED FROM VAN HOI).

AREA A (4 NM SE AT UTM COORDINATES VJ901802) -- AT LEAST 17 BARRACKS AND 6 SUPPORT BUILDINGS. HEAVY CLOUDS PRECLUDE FURTHER INTERPRETATION.

AREA B (4.3 NM SSE AT UTM COORDINATES VJ899794) -- 22 BARRACKS AND 2 ADMINISTRATION, 2 STORAGE, AND 11 SUPPORT BUILDINGS.

AREA C (7 NM SE AT UTM COORDINATES VJ940770) -- 30 BARRACKS, ONE ADMINISTRATION BUILDING AND 12 SUPPORT BUILDINGS. AREA IS PARTIALLY CLOUD COVERED.

25X1D



25X1A



BAN LOT (NA SAN AREA), MILITARY AREAS 2113N 10402E

TWO MILITARY AREAS OBSERVED IN NA SAN AREA. (REFERENCE POINT IS NA SAN AIRFIELD).

AREA A (ONE NM NORTH) -- AREA APPROXIMATELY 1.5 NM ALONG NORTH SIDE OF ROAD CONTAINS APPROXIMATELY 90 BARRACKS AND SUPPORT BUILDINGS, ONE ADMINISTRATION BUILDING, AND ONE REVETTED STORAGE BUILDING. AN OCCUPIED 4-GUN AAA SITE, AN UNOCCUPIED 6-GUN AAA SITE AND NUMEROUS TRENCHES AND AW POSITIONS OBSERVED THROUGH SCATTERED CLOUDS. TWO UNIDENTIFIED VEHICLES OBSERVED.

AREA B (ONE NM EAST) -- AREA APPROXIMATELY .8 NM ALONG BOTH SIDES OF ROAD CONTAINS APPROXIMATELY 100 BARRACKS AND SUPPORT BUILDINGS, ONE LARGE H-SHAPED MESS HALL, ONE SMALL MESS HALL, ONE LARGE BUILDING UNDER CONSTRUCTION, AND 3 BUILDINGS SECURED BY FENCE WITH TRENCHES AROUND 2 OF THEM. NUMEROUS ENTRENCHMENTS OBSERVED TO THE NORTH AND NE.

25X1D



SECRET
NO FOREIGN DISSEM

NPIC/R-1570/63

25X1A

NA BO, MILITARY CAMP 2050N 10439E

.5 NM SW OF NA BO ON BOTH SIDES OF ROAD.
CAMP CONTAINS 10 PROBABLE BARRACKS AND 13 STORAGE/
SUPPORT BUILDINGS. TRENCH OBSERVED IMMEDIATELY
SOUTH OF BARRACKS AREA.
NO VEHICLES OBSERVED.

25X1D

THUAN CHAU, MILITARY CAMPS 2126N 10343E

TWO MILITARY AREAS OBSERVED THROUGH SCATTERED CLOUDS
IN THUAN CHAU VICINITY.

AREA A (ON NW EDGE OF THUAN CHAU) -- AT LEAST 53
BARRACKS-TYPE AND AT LEAST 74 STORAGE/SUPPORT
BUILDINGS.

AREA B (IMMEDIATELY SE OF THUAN CHAU) -- 10 BARRACKS-
TYPE, ONE ADMINISTRATION, ONE ADMINISTRATION/SUPPORT,
AND 11 MISCELLANEOUS STORAGE AND SUPPORT BUILDINGS.

NUMEROUS BUILDINGS OBSERVED WITHIN THUAN CHAU THAT
ARE POSSIBLY MILITARY IN NATURE.
TEN TRUCKS (3 TOWING TRAILERS) OBSERVED IN ENTIRE
COMPLEX.

25X1D

PLAINE DES JARRES MILITARY COMPLEX (LAOS) 1928N 10315E

IDENTIFICATION ONLY.

25X1D

SAM NEUA, MILITARY AREAS (LAOS) 2025N 10403E

SAM NEUA AND VICINITY.

AREA A (SOUTH EDGE OF SAM NEUA) -- PARTIALLY FENCED
BARRACKS AREA WITH APPROXIMATELY 10 BARRACKS, ONE
LARGE ADMINISTRATION BUILDING AND 15 SUPPORT
BUILDINGS.

AREA B (APPROXIMATELY 2 NM EAST OF SAM NEUA AND

8
SECRET
NO FOREIGN DISSEM

SECRET
NO FOREIGN DISSEM

NPIC/R-1570/63

ADJACENT TO WEST EDGE OF SAM NEUA AIRFIELD) -- 8 BARRACKS, ONE ADMINISTRATION BUILDING AND 5 SUPPORT BUILDINGS.

ROAD EXTENDS .1 NM EAST FROM AREA B TO A SMALL RIDGE WHERE 4 BUILDINGS AND NUMEROUS TRENCHES WERE OBSERVED. NUMEROUS SMALL STRONGPOINTS OBSERVED ON RIDGES AROUND SAM NEUA.

25X1D



25X1A



NGHIA HUNG (CU LAM AREA), MILITARY AREAS 1919N 10525E

TWO AREAS OF MILITARY ACTIVITY AT NGHIA HUNG.

AREA A (PHU QUI ARMY BARRACKS AND SUPPLY DEPOT WEST, [REDACTED] ON NW EDGE OF NGHIA HUNG) -- APPROXIMATELY 50 BARRACKS-TYPE AND NUMEROUS ASSOCIATED BUILDINGS.

25X1A

AREA B (3.5 NM SW OF AREA A) -- EXPLOSIVES STORAGE AREA CONTAINS 26 REVETTED STORAGE AND APPROXIMATELY 20 SUPPORT BUILDINGS.

25X1D



25X1A

QUI HAU AMMUNITION DEPOT WEST 2037N 10514E

SITE FORMERLY REPORTED AS HAI HA AREA STORAGE SITE. ONE NM NNE OF HAI HA. NO APPARENT CHANGE SINCE [REDACTED]

25X1D



25X1D

LANG CHI EXPLOSIVES PLANT 2142N 10515E

INDUSTRY COMPRISES 3 AREAS 1.5 NM NE OF HA CU.

AREA A -- SECURED AREA WITH 6 FABRICATION-TYPE BUILDINGS, A HEATING/POWER PLANT, 8 SMALL REVETTED BUILDINGS, 5 PROBABLE WATER TANKS, AND APPROXIMATELY 15 ASSOCIATED BUILDINGS. ONE ADMINISTRATION AND 2 ASSOCIATED BUILDINGS OBSERVED IMMEDIATELY OUTSIDE SECURED AREA.

AREA B (IMMEDIATELY WEST OF AREA A) -- 6 REVETTED AND

9
SECRET
NO FOREIGN DISSEM

NPIC/R-1570/63

4 ASSOCIATED BUILDINGS.

AREA C (IMMEDIATELY NW OF AREA A) -- SECURED TEST
AREA WITH 3 BUILDINGS.

25X1D



25X1A

BAN XOM LOM ARMY BARRACKS WEST 2050N 10441E



3 NM WNW OF BAN XOM LOM AT UTM COORDINATES VJ673036.
MILITARY BARRACKS AREA CONTAINS 34 BARRACKS, 3
H-SHAPED AND ONE T-SHAPED ADMINISTRATION BUILDING, 4
PROBABLE VEHICLE SHEDS, APPROXIMATELY 40 STORAGE/
SUPPORT BUILDINGS, AND 3 PROBABLE STORAGE/SUPPORT
BUILDINGS UNDER CONSTRUCTION.
TWELVE CARGO TRUCKS AND 4 SMALL, OPEN-BED, CARGO
TRAILERS OBSERVED.

25X1D



25X1A

BAN XOM LOM, MILITARY COMPLEX 2049N 10443E



WEST EDGE OF BAN XOM LOM AND 7.5 NM EAST OF POSTE DE
MOC CHAU AT UTM COORDINATES VJ718022.
COMPLEX, APPROXIMATELY ONE SQ MI IN AREA, CONTAINS
LARGE E-SHAPED PROBABLE HEADQUARTERS, APPROXIMATELY
115 BARRACKS-TYPE, 8 ADMINISTRATION, AND 170 STORAGE/
SUPPORT-TYPE BUILDINGS, AND 4 SUPPORT-TYPE BUILDINGS
UNDER CONSTRUCTION. NUMEROUS ENTRENCHMENTS AND AW
POSITIONS OBSERVED THROUGHOUT THE AREA. AN EXTENSIVE
TRAINING AREA OBSERVED AT NW EDGE OF COMPLEX.
FOUR CARGO TRUCKS OBSERVED IN COMPLEX.
(SEE ATTACHMENT 5.)

25X1D



THAN UYEN, MILITARY AREA 2200N 10355E

IMMEDIATELY NORTH OF THAN UYEN.
SECURED AREA CONTAINS 2 BARRACKS-TYPE AND 3 SMALL
SUPPORT BUILDINGS. FOURTEEN OLD BUILDING FOUNDATIONS
OBSERVED IMMEDIATELY EAST OF SECURED AREA AND A SMALL
DRIVER TRAINING AREA 2 NM NORTH OF TOWN.

25X1D



NPIC/R-1570/63

CONG LUAN AREA, AAA SITE 2058N 10557E

2.5 NM NE OF CONG LUAN AND 7 NM ESE OF HANOI AT UTM COORDINATES XJ001194. SECURED, 8-GUN AAA SITE CONTAINS 8 PROBABLE 85MM AAA GUNS, EACH POSITIONED ON A 45 FT CIRCULAR PAD, EQUALLY SPACED AROUND A RING ROAD 325 FT IN DIAMETER. SMALL BUILDING OBSERVED ADJACENT TO EACH GUN. PROBABLE FIRE CAN RADAR AND A SMALL SUPPORT AREA WITH 6 LARGE AND 5 SMALL BUILDINGS OBSERVED ON WEST EDGE OF THE SITE.
(SEE ATTACHMENT 6.)

25X1D



COMPLEXES

25X1A

PING-HSIANG COMPLEX (CHINA) 2207N 10646E

COMPLEX 95 PERCENT CLOUD COVERED. APPROXIMATELY 60 RAILROAD CARS OF VARIOUS TYPES OBSERVED IN RAIL YARDS IN CLOUD FREE AREAS.

25X1D



LAD KAY COMPLEX 2231N 10359E

COMPLEX, TRANSPORTATION CENTER ON YUAN CHIANG (RED RIVER) AT THE NORTH VIETNAM-CHINA BORDER, INCLUDES LANDING STRIP, THERMAL ELECTRIC POWER PLANT, AND RAILROAD YARD WITH APPROXIMATELY 85 RAILROAD CARS INCLUDING 49 PROBABLE BOXCARS AND 5 PROBABLE TANK, 20 PROBABLE FLAT, AND 11 PROBABLE GONDOLA CARS. SEVERAL SMALL HOUSING AND STORAGE AREAS OBSERVED IN THE AREA.

25X1D



25X1A

PHU LANG THUONG COMPLEX 2117N 10612E

COMPLEX, .8 SQ MI IN AREA, A COMMERCIAL CENTER ON THE HANOI-LANG SON RAILROAD LINE, COMPRISES RAILROAD CLASSIFICATION YARD (4 TRACKS, 1,600 FT LONG), SEVERAL SMALL INDUSTRIES, MILITARY BARRACKS, POL STORAGE AT SOUTH EDGE OF COMPLEX, AND LARGE PROBABLE CHEMICAL



SECRET
NO FOREIGN DISSEM

NPIC/R-1570/63

FERTILIZER PLANT UNDER CONSTRUCTION 1.5 NM NNE OF
PHU LANG THUONG.
SCATTERED CLOUDS PRECLUDE INTERPRETATION OF MILITARY
ACTIVITY.

25X1D



25X1A

CAO BANG, MILITARY COMPLEX 2240N 10615E



THREE SMALL MILITARY AREAS IN CAO BANG VICINITY.

AREA A (NW EDGE OF CAO BANG ON EAST BANK OF THE
BANG GIANG (RIVER)) -- FENCED, POSSIBLE STORAGE AREA
CONTAINS 7 STORAGE AND 10 SUPPORT BUILDINGS. AREA
IS PARTIALLY CLOUD COVERED.

AREA B (IMMEDIATELY EAST OF CAO BANG, ON NE EDGE OF
CAO BANG AIRFIELD, AND ON EAST BANK OF THE BANG
GIANG) -- FENCED BARRACKS AREA CONTAINS 9 BARRACKS,
2 ADMINISTRATION/SUPPORT BUILDINGS, AND 2 SUPPORT
BUILDINGS.

AREA C (.7 NM WSW OF CAO BANG AIRFIELD) -- BARRACKS
AREA CONTAINS 10 BARRACKS, 3 PROBABLE BARRACKS, AND
ONE ADMINISTRATION, 10 SUPPORT, AND MISCELLANEOUS
SMALLER BUILDINGS.

25X1D



25X1A

LANG SON COMPLEX 2151N 10645E



ONLY 50 PER CENT OF COMPLEX OBSERVED DUE TO
INCOMPLETE PHOTO COVERAGE.
BARRACKS AREA ON SW EDGE OF COMPLEX CONTAINS 32
BARRACKS-TYPE, ONE ADMINISTRATION, AND APPROXIMATELY
20 SUPPORT BUILDINGS.

25X1D



25X1A

HANOI COMPLEX 2101N 10551E



APPROXIMATELY 85 PER CENT OF COMPLEX COVERED BY
CLOUD-FREE PHOTOGRAPHY.
COMPLEX, APPROXIMATELY 12 SQ MI IN AREA, A MAJOR
COMMERCIAL, INDUSTRIAL, AND TRANSPORTATION CENTER,
INCLUDES NUMEROUS LIGHT INDUSTRIAL PLANTS, SEVERAL

12
SECRET
NO FOREIGN DISSEM

SECRET
NO FOREIGN DISSEM

NPIC/R-1570/63

MILITARY INSTALLATIONS, A PROBABLE FABRICATION INDUSTRY UNDER CONSTRUCTION ON SE EDGE AND NUMEROUS APARTMENT-TYPE DEVELOPMENTS IN VARIOUS STAGES OF CONSTRUCTION IN SOUTHERN PORTION OF CITY. APPROXIMATELY 125 RAILROAD CARS OBSERVED IN CLASSIFICATION YARDS.

25X1D



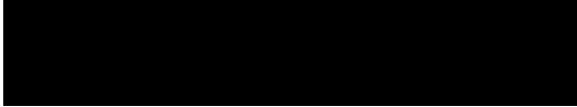
25X1A

THAI NGUYEN IRON AND STEEL COMBINE 2134N 10552E

25X1D

NO APPARENT CHANGE IN CLOUD-FREE AREAS SINCE

25X1D



25X1A

THANH HOA COMPLEX 1948N 10546E

COMPLEX, APPROXIMATELY ONE SQ MI IN AREA, CONTAINS RAILROAD YARD, SEVERAL SMALL LIGHT INDUSTRIES, AND SEVERAL SMALL BARRACKS AREAS. RAILROAD BRIDGE UNDER CONSTRUCTION OBSERVED 2.4 NM NE OF THANH HOA. AN OCCUPIED 4-GUN AAA SITE OBSERVED AT FORMER THANH HOA AIRFIELD, 1.5 NM SE OF TOWN.

25X1D



25X1A

PHU LANG THUONG PROB CHEM FERTILIZER PLT U/C 2118N 10612E

1.5 NM NNE OF PHU LANG THUONG. LARGE, RAIL-SERVED, PARTIALLY FENCED PROBABLE CHEMICAL FERTILIZER PLANT IN EARLY STAGE OF CONSTRUCTION CONTAINS 17 LARGE INDUSTRIAL BUILDINGS, 2 ADMINISTRATION BUILDINGS, THERMAL POWER PLANT, 2 PROBABLE WET GASOMETERS, A TALL, 4-SIDED, SELF-SUPPORTING LATTICE TOWER, AND 2 CYLINDRICAL TANK-LIKE OBJECTS ENCLOSED BY PROBABLE SCAFFOLDING. A PUMPING STATION UNDER CONSTRUCTION ON THE SONG THUONG (RIVER) IS CONNECTED BY A SERIES OF PARTIALLY BURIED PIPELINES TO THE INDUSTRIAL AREA. WATER TREATMENT PLANT OBSERVED UNDER CONSTRUCTION IMMEDIATELY EAST OF THE PUMPING STATION. CONSTRUCTION WORKERS HOUSING AREAS, ON NORTH AND SE EDGES OF THE INDUSTRIAL AREA, CONTAIN A TOTAL OF APPROXIMATELY 100 HOUSING AND SUPPORT BUILDINGS. (SEE ATTACHMENT 7.)

13
SECRET
NO FOREIGN DISSEM

SECRET
NO FOREIGN DISSEM

NPIC/R-1570/63

25X1D



25X1A



UONG BI THERMAL POWER PLANT U/C 2102N 10647E

NE END OF UONG BI AND APPROXIMATELY 11 NM NE OF HAIPHONG. ROAD AND RAIL-SERVED (3 SPURS) LARGE THERMAL ELECTRIC POWER PLANT UNDER CONSTRUCTION. PLANT IS COAL FUELED WITH OIL RESERVES. COAL SUPPLY AND 6 SMALL POL STORAGE TANKS OBSERVED. PLANT COMPRISES COMPLETED SMOKE STACK, CONVEYOR, 2 FLUES, AND CONDENSER/WATER INTAKE AND PUMP HOUSE AT RIVER. BOILER/GENERATOR HOUSE IS STILL UNDER CONSTRUCTION AND NOW CONTAINS 2 BOILERS WITH PLANT DESIGNED FOR EXPANSION TO 4 BOILERS.

25X1D



-MISCELLANEOUS ACTIVITY-

THANH HOA AREA, RR BRIDGE & RR LINE U/C 1950N 10548E

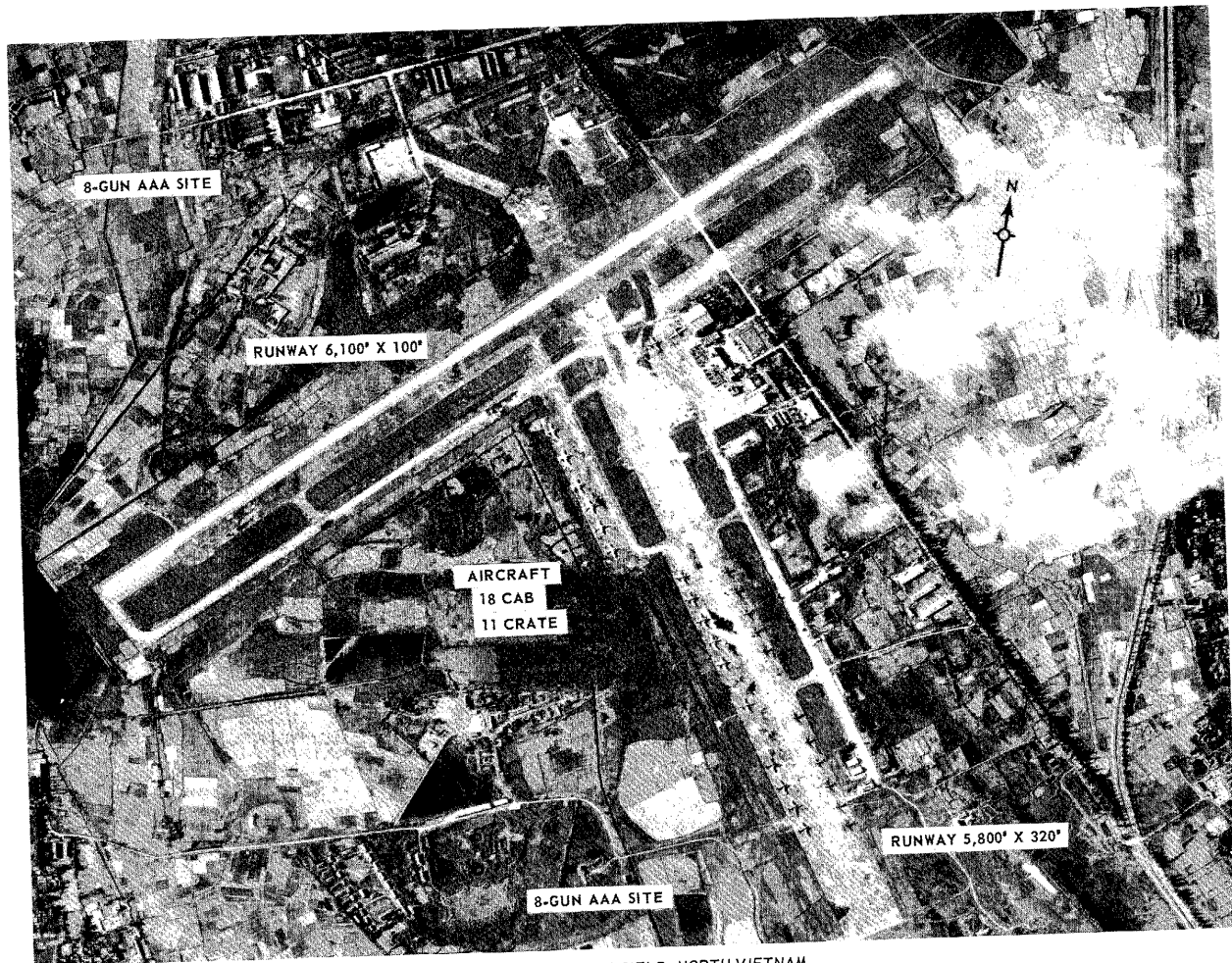
2.4 NM NE OF THANH HOA AT SONG MA (RIVER). ONE PIER AND BOTH ABUTMENTS OF BRIDGE APPEAR COMPLETED. PART OF BRIDGE SUPERSTRUCTURE IS IN ASSEMBLY PROCESS ON NORTH BANK. RAILS HAVE BEEN LAID FROM BRIDGE 4.7 NM SW TO 19-47N 105-45E. CROSSTIES HAVE BEEN LAID, FROM THERE, 3.6 NM SW TO 19-44N 105-43E. PROBABLE WORK TRAIN COMPRISING AN ENGINE AND 7 PROBABLE FLAT CARS OBSERVED 4.7 NM SW OF BRIDGE AT 19-47N 105-45E.

25X1D



SECRET
NO FOREIGN DISSEM

Approved For Release 2000/08/04 : CIA-RDP78B04560A001800010046-9



NPIC H-0079 (11/63)

HANOI/GIA LAM AIRFIELD, NORTH VIETNAM

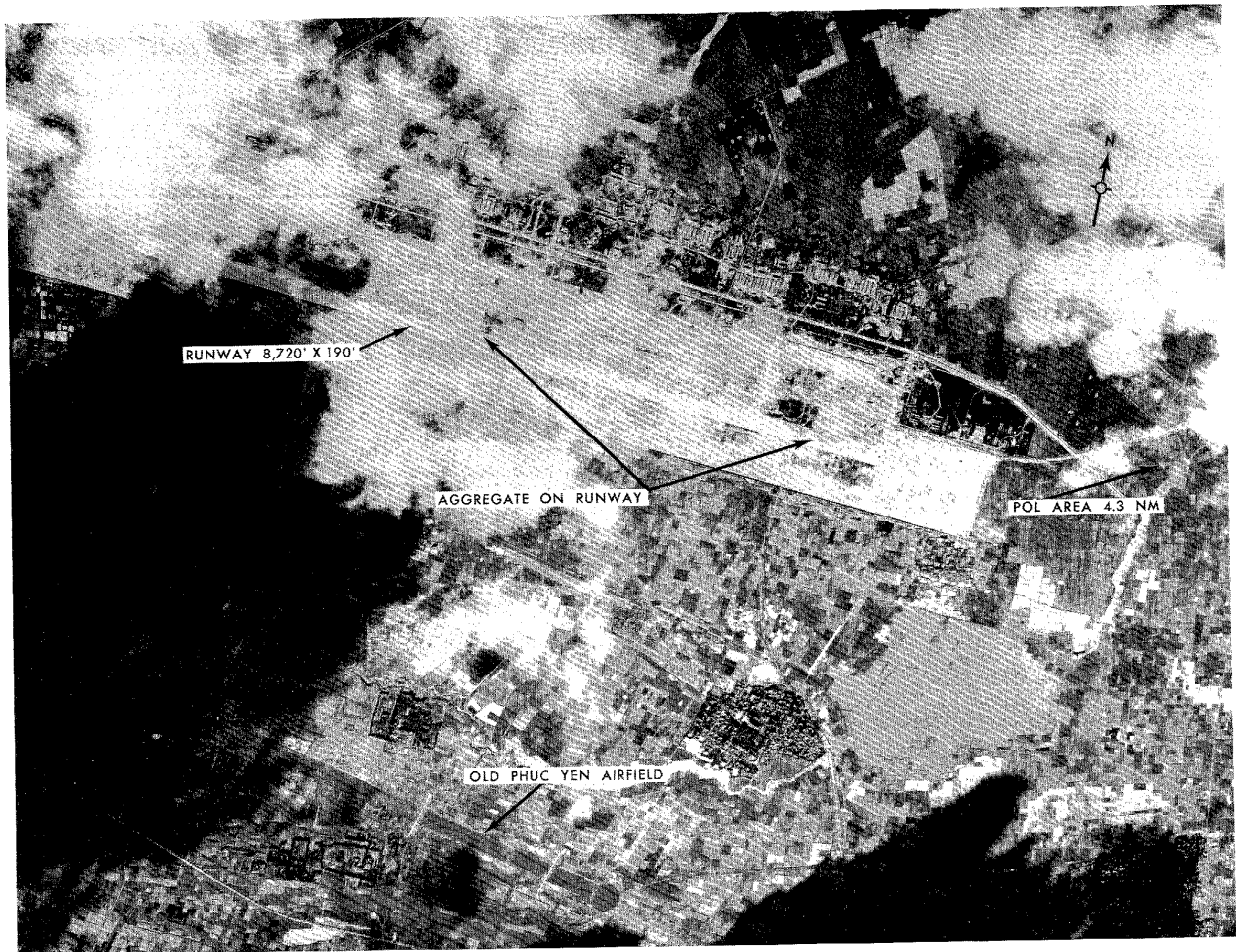
SECRET
NO FOREIGN DISSEM

NPIC/R-1570/63
ATTACHMENT 1

SECRET
NO FOREIGN DISSEM

Approved For Release 2000/08/04 : CIA-RDP78B04560A001800010046-9

Approved For Release 2000/08/04 : CIA-RDP78B04560A001800010046-9



NPIC H-5874 (11/65)

PHUC YEN AIRFIELD, NORTH VIETNAM

NPIC/R-1570/63
ATTACHMENT 2

SECRET
NO FOREIGN DISSEM

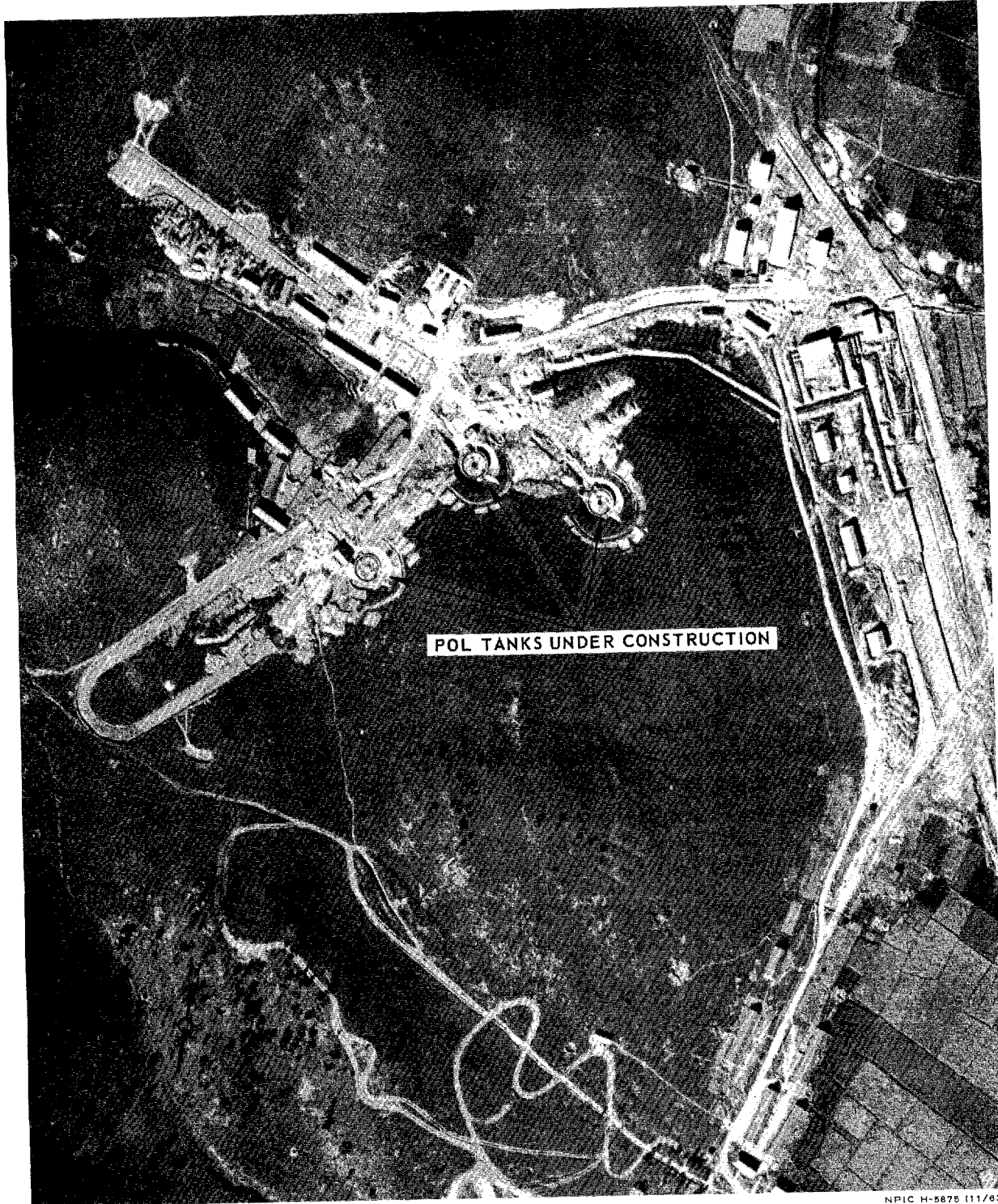
Approved For Release 2000/08/04 : CIA-RDP78B04560A001800010046-9

SECRET
NO FOREIGN DISSEM

SECRET
NO FOREIGN DISSEM

NPIC/R-1570/63

ATTACHMENT 3

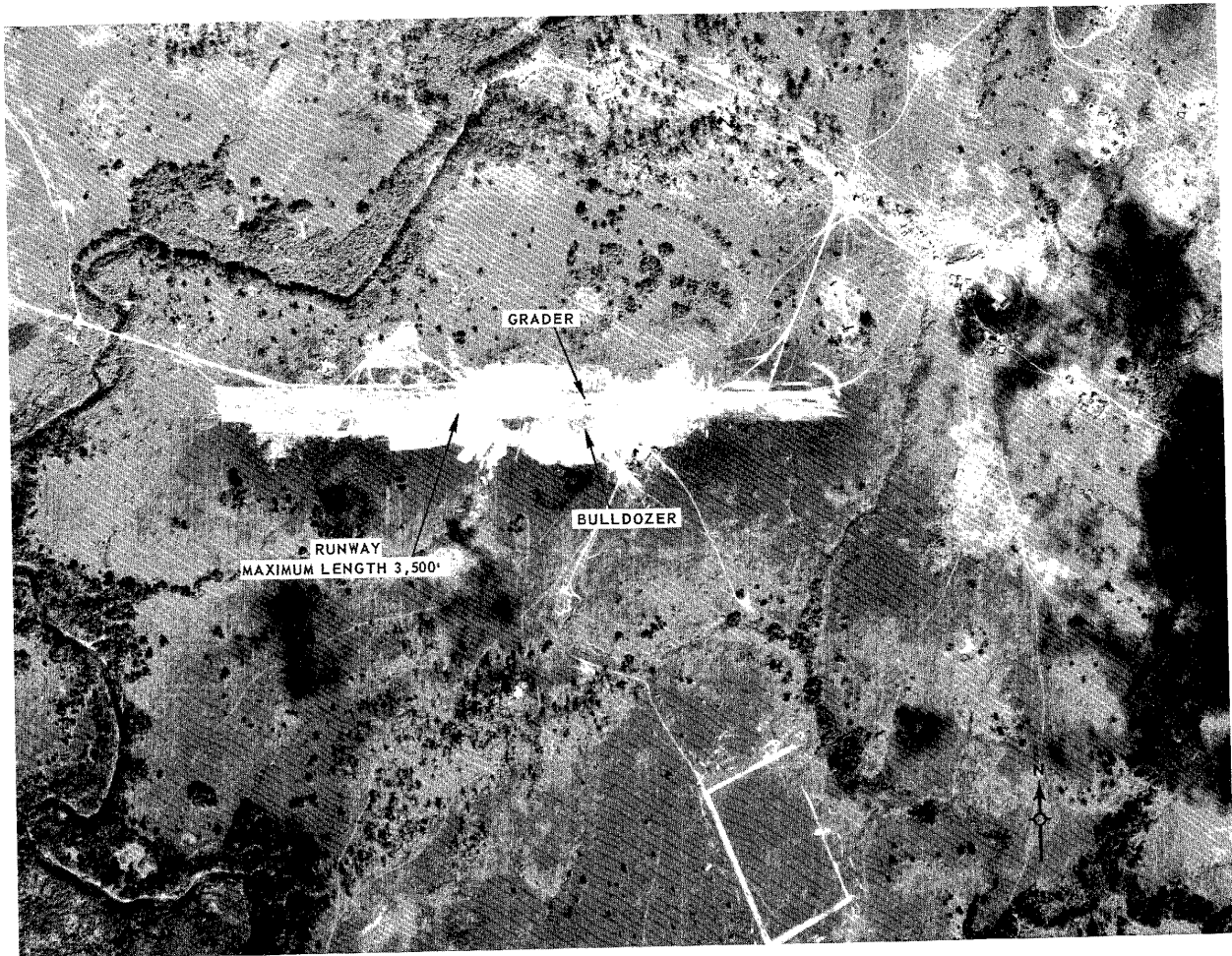


NPIC H-5875 (11/69)

POL STORAGE AT PHUC YEN AIRFIELD, NORTH VIETNAM

SECRET
NO FOREIGN DISSEM

Approved For Release 2000/08/04 : CIA-RDP78B04560A001800010046-9



NPIC H-5876 (11/63)

AIRFIELD UNDER CONSTRUCTION, PHO KHAO KHOUAI, LAOS

NPIC/R-1570/63
ATTACHMENT 4

SECRET
NO FOREIGN DISSEM

SECRET
NO FOREIGN DISSEM

Approved For Release 2000/08/04 : CIA-RDP78B04560A001800010046-9

Approved For Release 2000/08/04 : CIA-RDP78B04560A001800010046-9



NPIC H-0877 (11/63)

MILITARY COMPLEX, BAN XOM LOM, NORTH VIETNAM

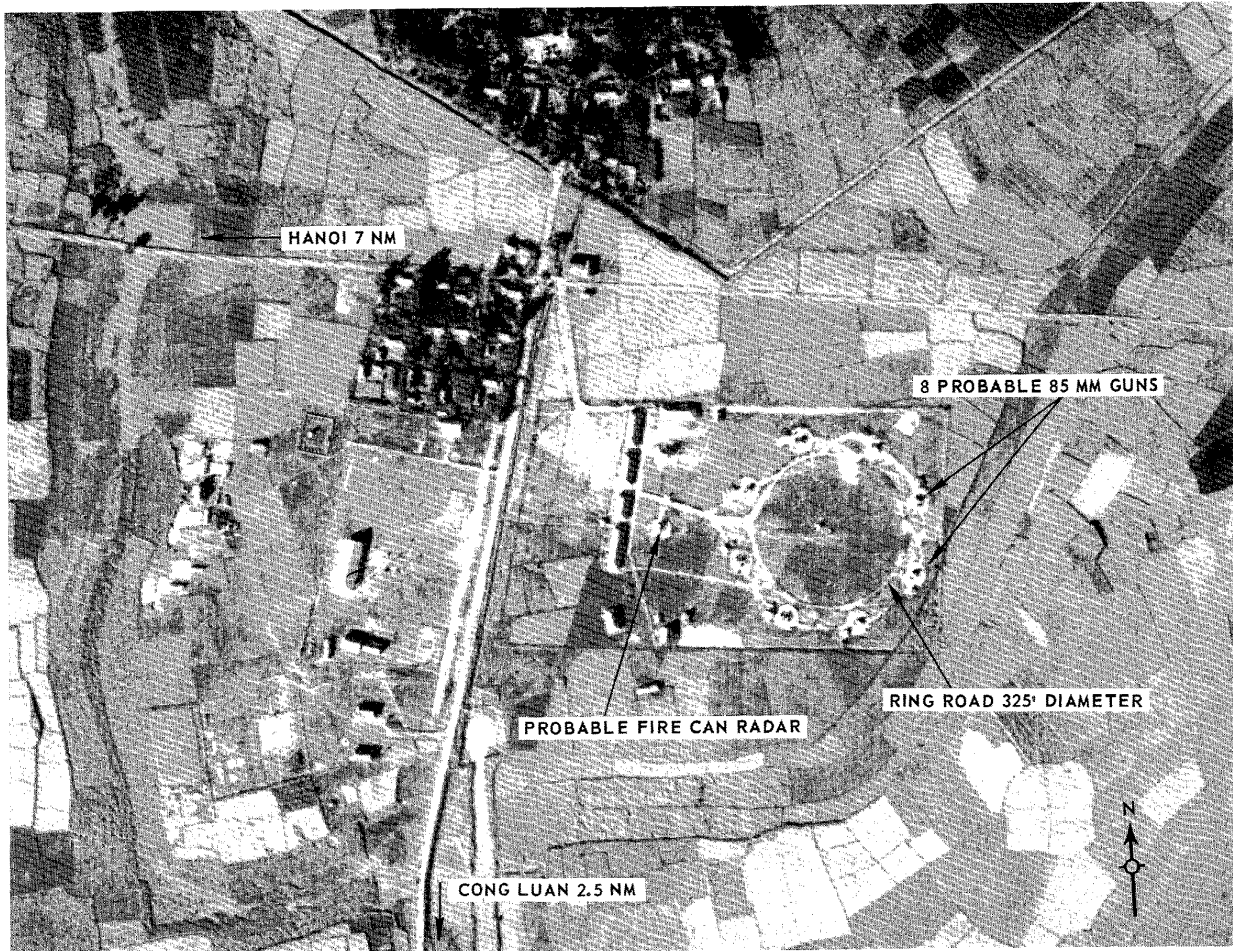
SECRET
NO FOREIGN DISSEM

NPIC/R-1570/63
ATTACHMENT 5

Approved For Release 2000/08/04 : CIA-RDP78B04560A001800010046-9

SECRET
NO FOREIGN DISSEM

Approved For Release 2000/08/04 : CIA-RDP78B04560A001800010046-9



NPIC H-5878 (11/63)

AAA SITE, CONG LUAN AREA, NORTH VIETNAM

SECRET
NO FOREIGN DISSEM

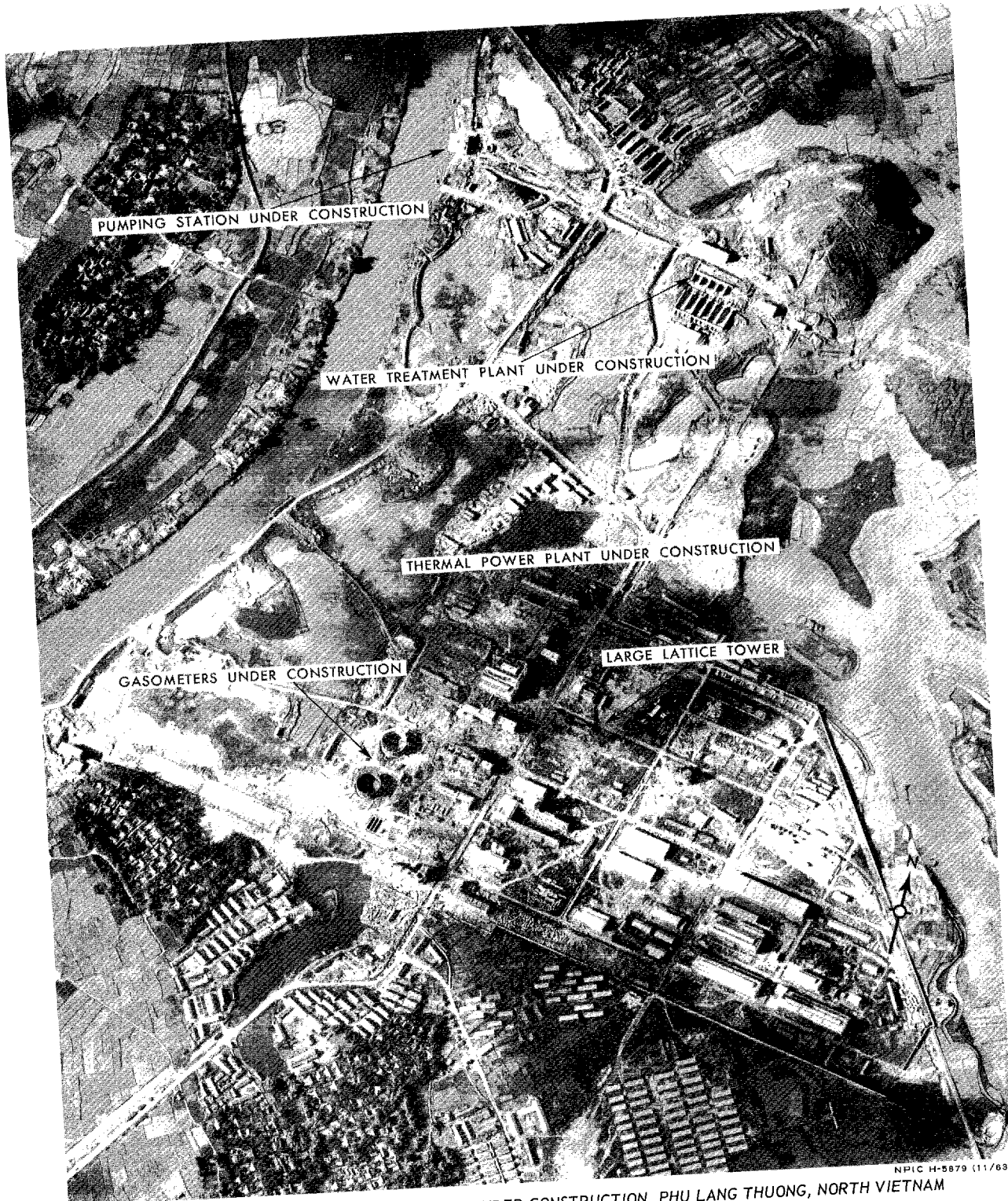
SECRET
NO FOREIGN DISSEM

NPIC/R-1570/63
ATTACHMENT 6

Approved For Release 2000/08/04 : CIA-RDP78B04560A001800010046-9

SECRET
NO FOREIGN DISSEM

NPIC/R-1570/63
ATTACHMENT 7



NPIC H-5879 (11/63)

PROBABLE CHEMICAL FERTILIZER PLANT UNDER CONSTRUCTION, PHU LANG THUONG, NORTH VIETNAM

SECRET
NO FOREIGN DISSEM

Approved For Release 2000/08/04 : CIA-RDP78B04560A001800010046-9

SECRET
NO FOREIGN DISSEM

Approved For Release 2000/08/04 : CIA-RDP78B04560A001800010046-9

SECRET
NO FOREIGN DISSEM