

NPIC/R-1571/63  
December 1963



PHOTOGRAPHIC INTERPRETATION REPORT

IPIR SUPPLEMENT  
BRASS KNOB MISSION 3750  
13 OCTOBER 1963

Declass reveiw-NIMA/DOD

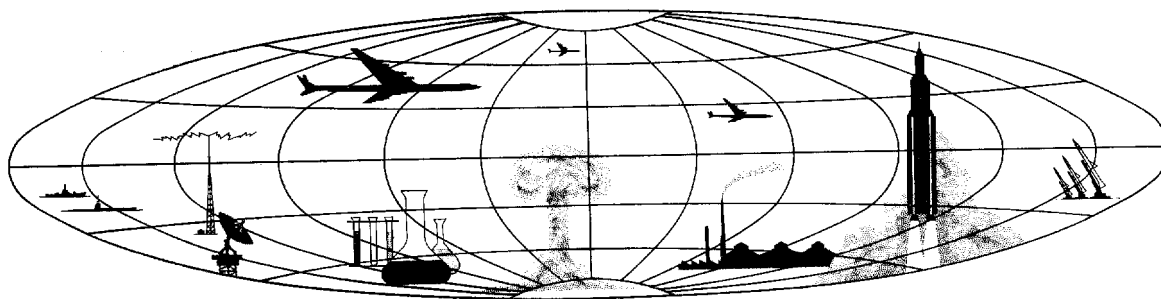


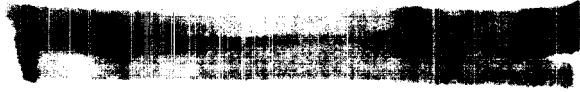
CIA



DIA

NATIONAL PHOTOGRAPHIC INTERPRETATION CENTER





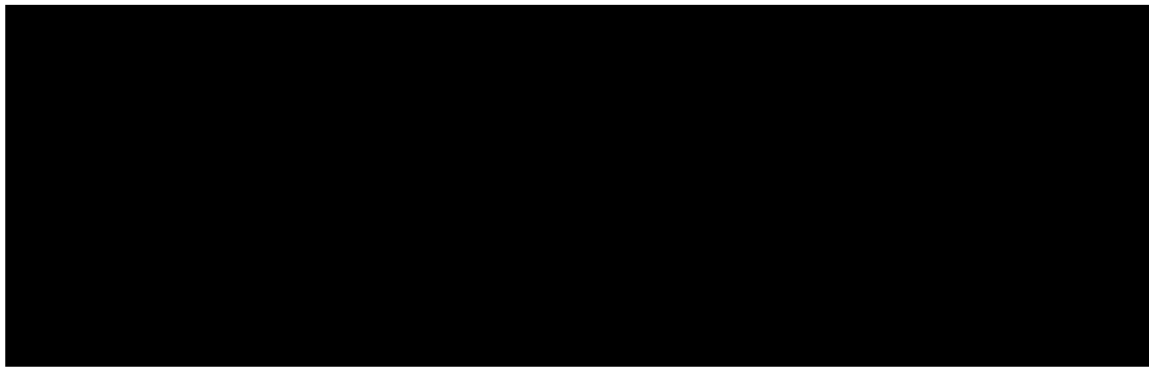
WARNING

This document contains information affecting the national defense of the United States, within the meaning of Title 18, sections 793 and 794, of the U.S. Code, as amended. Its transmission or revelation of its contents to or receipt by an unauthorized person is prohibited by law.

SECRET

NPIC/R-1571/63

PREFACE



25X1D

SYMBOLS USED TO INDICATE CONDITIONS WHICH AFFECT THE APPEARANCE OF THE TARGET ON THE PHOTOGRAPHY ARE AS FOLLOWS -- C (CLEAR), SC (SCATTERED CLOUDS), HC (HEAVY CLOUDS), H (HAZE), CS (CLOUD SHADOW), SD (SEMIDARKNESS), O (OBLIQUITY), PQ (POOR IMAGE QUALITY).

SUMMARY

THE INTERPRETATION SUITABILITY OF BRASS KNOB MISSION 3750 RANGED FROM GOOD TO EXCELLENT, WHEN NOT HAMPERED BY WEATHER. COMPARISON OF TARGETS WAS LIMITED, IN THAT MANY OF THE PRIME EXAMPLES WERE CLOUD-COVERED OR OF MARGINAL QUALITY ON



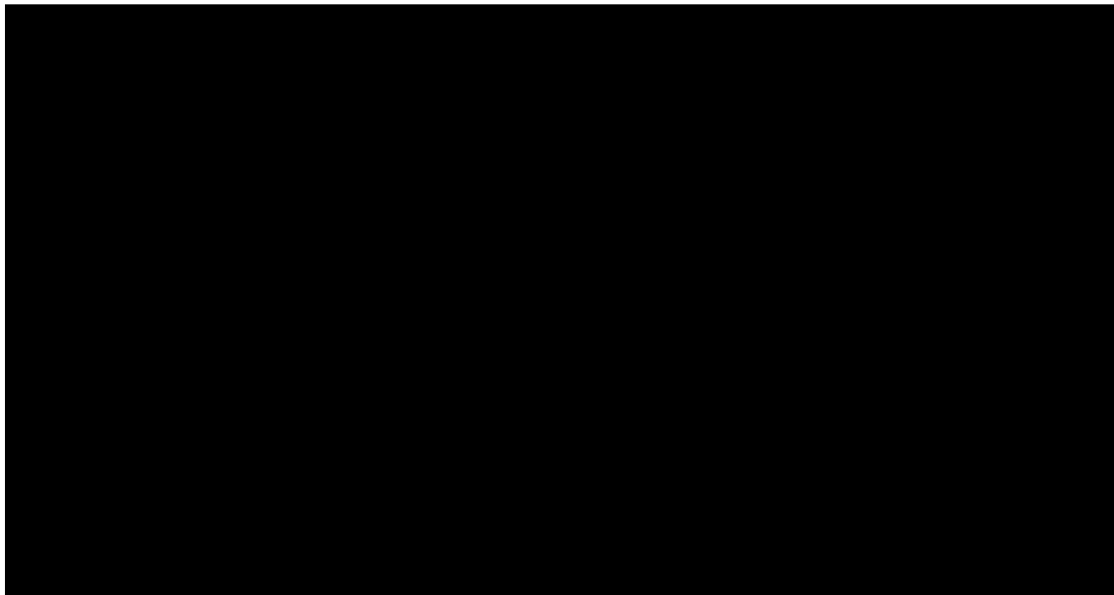
25X1D

25X1D

SECRET

SECRET

NPIC/R-1571/63

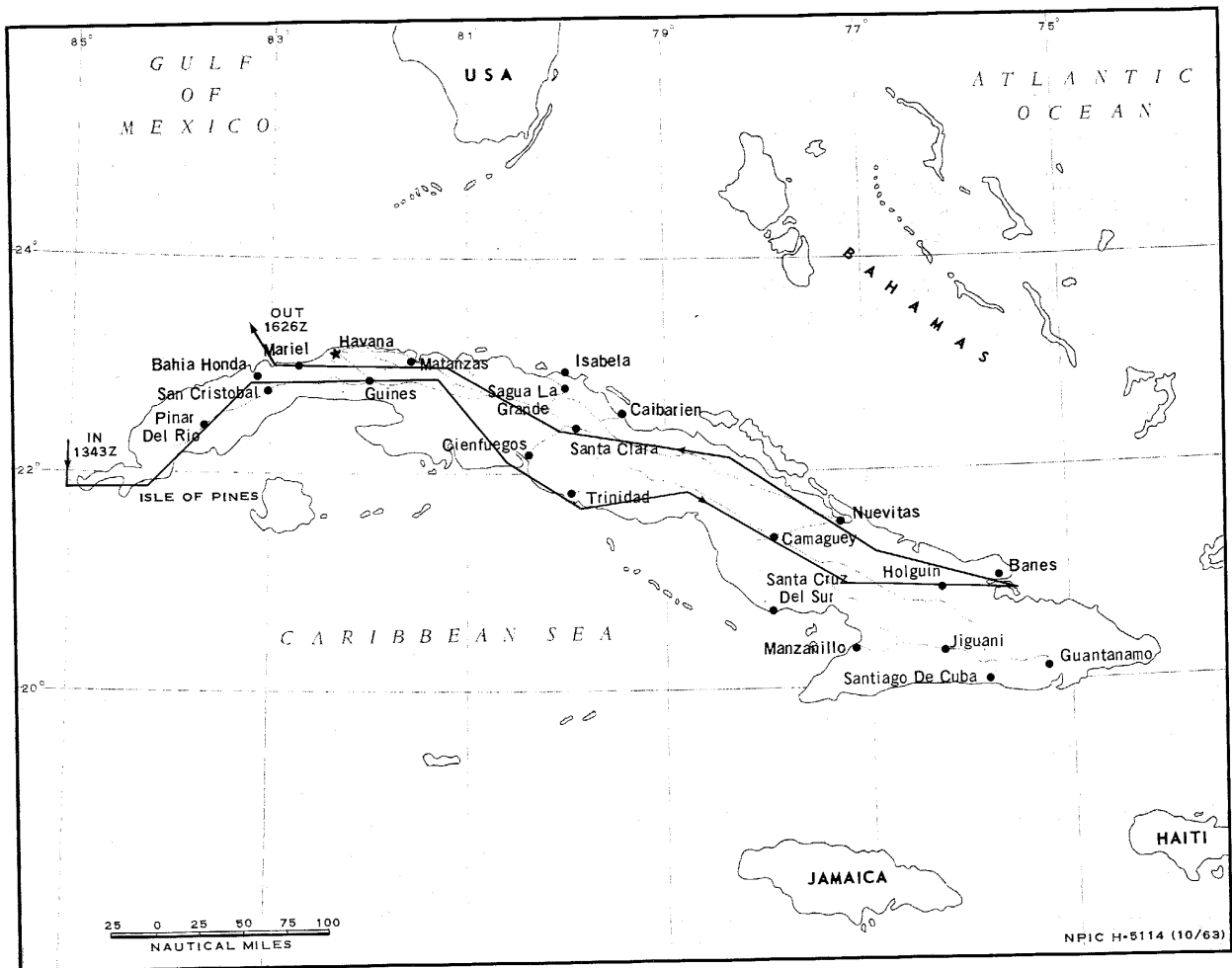


25X1D

- FOR ITEMS OF SPECIAL INTEREST, SEE ---
- 25X1D ATTACHMENT 1 --- MANAGUA SAM SITE [REDACTED]
  - ATTACHMENT 2 --- GIBARA PORT FACILITIES
  - ATTACHMENT 3 --- HOLGUIN MILITARY CAMP (MOTOR PARK)
  - 25X1D [REDACTED]
  - ATTACHMENT 4 --- TORRENS MILITARY COMPLEX (AREA 6)
  - 25X1D [REDACTED]
  - ATTACHMENT 5 --- HAVANA MILITARY CAMP CALABAZAR  
(AREA 3) [REDACTED]
  - 25X1D ATTACHMENT 6 --- SANTA CLARA, AAA DEFENSES

SECRET

Approved For Release 2000/08/04 : CIA-RDP78B04560A001800010047-8



APPROXIMATE TRACK OF BRASS KNOB MISSION 3750, 13 OCTOBER 1963

Approved For Release 2000/08/04 : CIA-RDP78B04560A001800010047-8

SECRET

SECRET

NPIC/R-1571/63

SECRET

-MISSILES-

25X1A

GUANAJAY IRBM SITE 1 2257N 08239W

2.3 NM NE OF GUANAJAY.  
AN ABANDONED IRBM LAUNCH SITE CONSISTING OF 2 PAIR  
(4 POSITIONS) OF PARTIALLY DESTROYED LAUNCH PADS, EACH  
PAIR HAVING AN ASSOCIATED CONTROL BUNKER. ONE LARGE  
AND 2 SMALLER SHED-TYPE BUILDINGS, AND AN ARCH-ROOFED  
BUILDING LOCATED ALONG ACCESS ROAD JUST EAST OF LAUNCH  
AREA. AN UNOCCUPIED 3-GUN AAA SITE IS LOCATED  
APPROXIMATELY 1200 FT NORTH OF THE LAUNCH AREA AT UTM  
17Q LR 303390.  
(AMS SERIES E723, SHEET 3684-I, 3D ED).

25X1D

REMEDIOS IRBM SITE 2225N 07935W

LOCATED 5.2 NM SSW OF REMEDIOS.  
AREA IS OVERGROWN WITH VEGETATION. THE EARTH-  
COVERED ARCH-ROOFED BUILDING REMAINS. NO ACTIVITY  
OBSERVED IN AREA.

25X1D

GUANAJAY IRBM SITE 2 2257N 08237W

4.2 NM ENE OF GUANAJAY.  
AN ABANDONED IRBM LAUNCH SITE CONSISTING OF 2 PAIR  
(4 POSITIONS) OF PARTIALLY CONSTRUCTED LAUNCH PADS,  
EACH PAIR WITH A CONTROL BUNKER WHICH APPEARS TO HAVE  
BEEN ABANDONED IN INITIAL STAGES OF CONSTRUCTION. A  
PARTIALLY CONSTRUCTED SUPPORT BUILDING IS LOCATED

SECRET

SECRET

NPIC/R-1571/63

APPROXIMATELY 2300 FT SW OF THE LAUNCH AREA. THE MAIN SUPPORT AREA IS SITUATED IN A CLEARED AREA 3500 TO 4500 FT EAST OF THE LAUNCH AREA AND CONSISTS OF 7 DOUBLE BARRACKS-TYPE (ONE PARTIALLY ROOFED), ONE THATCHED-ROOF, ONE METAL-ROOF (EQUAL IN SIZE TO THE BARRACKS), AND 10 SMALLER BUILDINGS. AN L-SHAPED BUILDING IS LOCATED ALONG THE ACCESS ROAD APPROXIMATELY 2200 FT WSW OF THE SUPPORT AREA. FIVE SEMI-RETTED OVERGROWN PARKING AREAS AND AT LEAST 2 OVERGROWN AND UNOCCUPIED 3-GUN AAA SITES ARE LOCATED IN THE VICINITY OF THE SUPPORT AREA.

25X1D

25X1A

TAPASTE AREA STORAGE SITES 2302N 08207W

TEN EARTH-MOUNDED STORAGE BUILDINGS OBSERVED IN CLOUD-FREE AREAS.

25X1D

SAN JULIAN AIRFIELD SAM SITE 2205N 08408W

SITE 1 -- 6 RETTED CANVAS-COVERED LAUNCHERS, 7 CANVAS-COVERED MISSILE TRANSPORTERS IN 4 CANVAS-COVERED HOLD POSITIONS (3 RETTED HOLD POSITIONS, ONE PARTIALLY RETTED), 15 CANVAS-COVERED TRACKED PRIME MOVERS, ONE VAN TRUCK, 4 CARGO TRUCKS, 2 UTILITY TRUCKS, 6 SETS OF BOGIE WHEELS, 2 POSSIBLE GENERATOR VANS, ONE CARGO TRAILER, 4 UNIDENTIFIED VEHICLES (2 CANVAS-COVERED), AND AN OCCUPIED GUIDANCE RETTMENT WITH FAN SONG RADAR AND CANVAS-COVERED GUIDANCE EQUIPMENT. FACILITIES INCLUDE 3 BARRACKS-TYPE BUILDINGS, 2 SUPPORT BUILDINGS, ONE LARGE, ONE MEDIUM, AND ONE SMALL TENT. AREA ENCLOSED BY SECURITY FENCE.

SITE 2 -- LOCATED IMMEDIATELY WEST OF SITE 1. SIX UNRETTED LAUNCHERS (ONE CANVAS-COVERED, 5 NET-COVERED, 4 WITH MISSILES), 3 CANVAS-COVERED MISSILE TRANSPORTERS, 15 CANVAS-COVERED TRACKED PRIME MOVERS, 2 VAN TRUCKS, ONE CARGO TRUCK, 3 UNIDENTIFIED VEHICLES, 3 VAN TRAILERS, ONE CARGO TRAILER, AND AN OCCUPIED GUIDANCE AREA WITH FAN SONG RADAR AND CANVAS-COVERED GUIDANCE EQUIPMENT. FACILITIES INCLUDE ONE MEDIUM AND ONE SMALL TENT.

25X1D

SECRET

25X1A

MARIEL SAM SITE 2300N 08249W

SIX REVETTED LAUNCHERS (3 WITH MISSILES), 7 MISSILE TRANSPORTERS (4 CANVAS-COVERED), ONE TRUCK-MOUNTED CRANE, 5 CARGO TRUCKS, ONE VAN TRAILER, AND AN OCCUPIED GUIDANCE AREA CONTAINING RADAR AND 6 VANS OBSERVED. FACILITIES INCLUDE 2 LARGE, ONE MEDIUM, AND 2 SMALL TENTS AND A CANVAS-COVERED PARKING AREA.

25X1D

MATANZAS SAM SITE 2301N 08129W

SIX UNRETTED LAUNCHERS (3 WITH MISSILES), 6 MISSILE TRANSPORTERS (2 CANVAS-COVERED), 14 TRACKED PRIME MOVERS (12 CANVAS-COVERED), 3 POSSIBLE CARGO TRUCKS, ONE TRUCK-MOUNTED CRANE, 5 VAN TRAILERS, 4 UNIDENTIFIED VEHICLES AND AN OCCUPIED GUIDANCE AREA CONTAINING RADAR AND RELATED CANVAS-COVERED EQUIPMENT. FACILITIES CONSIST OF 3 BARRACKS OR STORAGE BUILDINGS, AND 3 LARGE AND ONE SMALL TENT.

25X1D

HAVANA SAM SITE 2309N 08213W

THREE UNRETTED LAUNCHERS (ONE CANVAS-COVERED), ONE CARGO TRUCK, 18 VEHICLES OR PIECES OF EQUIPMENT, 2 CANVAS-COVERED AREAS, ONE BUILDING, AND 5 LARGE TENTS OBSERVED IN CLOUD-FREE AREAS.

25X1A

25X1D

CIENFUEGOS SAM SITE 2202N 08024W

SIX UNRETTED LAUNCHERS (3 WITH MISSILES, 3 CANVAS-COVERED), 3 CANVAS-COVERED HOLD AREAS (ONE WITH PRIME MOVER AND A PORTION OF TRANSPORTER EXPOSED), ONE CARGO TRUCK, 2 PROBABLE GENERATOR VANS, 7 VEHICLES OR PIECES OF EQUIPMENT (5 CANVAS-COVERED), AND AN OCCUPIED GUIDANCE AREA CONTAINING RADAR AND CANVAS-COVERED EQUIPMENT OBSERVED.

25X1A



SECRET

NPIC/R-1571/63

FACILITIES -- 2 BARRACKS OR STORAGE BUILDINGS,  
4 SUPPORT BUILDINGS, ONE TENT OR SHED AND 2 LARGE  
TENTS.

25X1D

25X1A

CAIBARIEN SAM SITE 2228N 07929W

SIX UNRETTED CANVAS-COVERED LAUNCHERS, ONE CANVAS-  
COVERED MISSILE TRANSPORTER, AN UNDETERMINED NUMBER OF  
ADDITIONAL CANVAS-COVERED MISSILE TRANSPORTERS, A  
CANVAS-COVERED VEHICLE PARKING AREA, APPROXIMATELY 4  
VEHICLES, 6 SETS OF BOGIE WHEELS, AND AN OCCUPIED  
GUIDANCE AREA OBSERVED.  
FACILITIES INCLUDE 2 LARGE TENTS AND 3 STRUCTURES.  
SCATTERED CLOUDS AND CLOUD SHADOW LIMIT  
INTERPRETATION.

25X1D

25X1A

SANTIAGO DE LAS VEGAS SAM ASSEMBLY AREA 2257N 08221W

TWENTY-TWO MISSILE TRANSPORTERS (2 WITHOUT PRIME  
MOVERS), 3 POSSIBLE MISSILE TRANSPORTERS (2 WITHOUT  
PRIME MOVERS), 4 TRACTOR-TRAILERS (2 WITH  
PRIME MOVERS), 7 CARGO TRUCKS, 4 POSSIBLE CARGO  
TRUCKS, 4 VAN TRUCKS, ONE UTILITY TRUCK, 7 VAN  
TRAILERS, 3 CARGO TRAILERS, 2 PROBABLE TRACKED PRIME  
MOVERS, AT LEAST 20 MISSILE CANISTERS, AN UNDETERMINED  
NUMBER OF CANVAS-COVERED MISSILE CANISTERS, AND 3  
STACKS OF CANVAS-COVERED MATERIAL OBSERVED.  
FACILITIES INCLUDE 3 LARGE BUILDINGS, AND ONE LARGE  
AND 3 SMALL TENTS.

25X1D

25X1A

PINAR DEL RIO SAM ASSEMBLY AREA 2221N 08339W

NINETEEN MISSILE TRANSPORTERS, 2 PRIME MOVERS, 5  
TRACTOR-TRAILER TRUCKS, 3 TRUCK-MOUNTED CRANES, AND  
APPROXIMATELY 40 MISSILE CANISTERS OBSERVED.  
FACILITIES INCLUDE 2 BARRACKS-TYPE BUILDINGS, AND  
2 LARGE AND ONE MEDIUM TENT.

25X1D

SECRET

25X1A

CAMAGUEY AIRFIELD SAM SITE 2122N 07750W

FOUR UNRETTED CANVAS-COVERED LAUNCHERS, 7 CANVAS-COVERED MISSILE TRANSPORTERS, 6 SETS OF BOGIE WHEELS, 5 TRACKED PRIME MOVERS, 6 TRUCK TRACTORS, 4 CARGO TRUCKS, 2 VAN TRUCKS, 2 UTILITY TRUCKS, ONE CARGO TRAILER AND 3 PROBABLE VAN TRAILERS OBSERVED IN CLOUD-FREE AREAS.  
FACILITIES INCLUDE ONE BARRACKS-TYPE BUILDING, 2 SUPPORT-TYPE BUILDINGS, AND 2 LARGE, 2 MEDIUM (ONE NOT OF A KNOWN SOVIET TYPE), AND 4 SMALL TENTS.  
SCATTERED CLOUDS LIMIT INTERPRETATION.

25X1D

HOLGUIN SAM SITE 2052N 07627W

SITE CONTAINS 6 SEMI-RETTED LAUNCHERS (3 WITH MISSILES), 7 MISSILE TRANSPORTERS (4 CANVAS-COVERED), 11 TRACKED PRIME MOVERS, 2 APC, 2 CARGO TRUCKS, ONE VAN TRUCK, 4 UNIDENTIFIED VEHICLES, AND AN OCCUPIED GUIDANCE AREA.  
FACILITIES INCLUDE 4 BARRACKS, AND ONE LARGE, AND 2 MEDIUM TENTS.

25X1A

25X1D

MANAGUA SAM SITE 2259N 08215W

SIX RETTED, NET-COVERED LAUNCHERS (AT LEAST TWO WITH MISSILES), 5 CANVAS-COVERED MISSILE TRANSPORTERS (ONE IN LAUNCH RETTMENT), ONE CARGO TRUCK, ONE UTILITY TRUCK, ONE VAN TRUCK, ONE TRACKED PRIME MOVER, 4 UNIDENTIFIED VEHICLES OR PIECES OF EQUIPMENT, AND AN OCCUPIED GUIDANCE RETTMENT WITH CANVAS-COVERED RADAR AND AT LEAST 6 NET-COVERED VANS OBSERVED.  
FACILITIES INCLUDE 3 BARRACKS-TYPE BUILDINGS, ONE VEHICLE SHED, 5 SMALL SHEDS OR BUILDINGS, AND ONE MEDIUM AND ONE SMALL TENT.  
(SEE ATTACHMENT 1)

25X1A

25X1D

SECRET

NPIC/R-1571/63

25X1A

LA COLOMA SAM SITE 2 2219N 08334W

SIX UNREVIEWED LAUNCHERS (3 WITH MISSILES, ONE NET-COVERED), 3 CANVAS-COVERED MISSILE TRANSPORTERS, ONE CANVAS-COVERED PROBABLE MISSILE TRANSPORTER, 9 TRACKED PRIME MOVERS, ONE TRUCK-MOUNTED CRANE, ONE CARGO TRUCK, ONE UTILITY TRUCK, 3 VAN TRAILERS, AND AN OCCUPIED GUIDANCE AREA CONTAINING RADAR AND CANVAS-COVERED EQUIPMENT. FACILITIES INCLUDE 6 LARGE, 6 MEDIUM, AND 2 SMALL TENTS.

25X1D

25X1A

SANTA CLARA SAM SITE 2229N 08000W

SIX UNREVIEWED CANVAS-COVERED LAUNCHERS, 3 CANVAS-COVERED HOLD POSITIONS, 7 CARGO TRUCKS, ONE UTILITY TRUCK, 7 TRACKED PRIME MOVERS, ONE OTHER VEHICLE, AND AN OCCUPIED GUIDANCE AREA WITH RADAR AND CANVAS-COVERED EQUIPMENT OBSERVED. FACILITIES INCLUDE 4 BARRACKS-TYPE BUILDINGS, ONE OTHER BUILDING, AND 2 LARGE, 3 MEDIUM, AND 2 SMALL TENTS.

25X1D

25X1A

TORRENS SAM ASSEMBLY AREA 2257N 08227W

APPROXIMATELY 25 MISSILE TRANSPORTERS, APPROXIMATELY 60 OTHER VEHICLES, APPROXIMATELY 40 MISSILE CANISTERS, AND AT LEAST 9 FIN-ASSEMBLY CRATES OBSERVED. FACILITIES INCLUDE ONE MISSILE ASSEMBLY TENT, 3 BARRACKS, AT LEAST 4 OTHER BUILDINGS, ONE SHED, AND ONE MEDIUM TENT. CLOUD SHADOW LIMITS INTERPRETATION.

25X1D

25X1A

BANES CRUISE-MISSILE SITE 2058N 07538W

TWO REVIEWED LAUNCHERS, 5 MISSILE TRANSPORTERS (3 CANVAS-COVERED), 7 CRUISE-MISSILE CRATES, 8 TRACKED PRIME MOVERS, 3 VAN TRUCKS, 7 CARGO TRUCKS, ONE TRUCK-MOUNTED CRANE, AND 11 UNIDENTIFIED VEHICLES. FACILITIES INCLUDE 4 BARRACKS, ONE MAINTENANCE

SECRET

SECRET

NPIC/R-1571/63

BUILDING, AND 2 LARGE (ONE NOT OF A KNOWN SOVIET TYPE), AND ONE MEDIUM TENT OBSERVED IN CLOUD-FREE AREAS.

AN OCCUPIED 3-GUN LIGHT AAA POSITION OBSERVED AT UTM 18Q VU 334199. A LARGE TENT (NOT OF A KNOWN SOVIET TYPE) IS ADJACENT.

(AMS SERIES E723, SHEET 5078-I, 3RD ED).

25X1D



25X1A

GUERRA CRUISE-MISSILE STORAGE 2300N 08250W



FACILITIES INCLUDE ONE H-SHAPED BUILDING, 15 LARGE RECTANGULAR BUILDINGS, 12 SMALL SUPPORT BUILDINGS, AND 2 MEDIUM TENTS (NONE OF A KNOWN SOVIET TYPE). THIRTY-FOUR CRUISE-MISSILE CRATES, 12 CRUISE-MISSILE-RELATED VEHICLES, 8 PROBABLE CRUISE-MISSILE TRANSPORTERS, 2 TRACKED PRIME MOVERS, 33 CARGO TRUCKS, 19 VAN TRUCKS, 14 UTILITY TRUCKS, ONE POL TRUCK, 5 TRUCK-MOUNTED CRANES, 28 UNIDENTIFIED VEHICLES, 3 CARGO TRAILERS, 18 UNIDENTIFIED VEHICLES OR PIECES OF EQUIPMENT, AND ADDITIONAL CANVAS-COVERED VEHICLES OR EQUIPMENT OBSERVED.

25X1D



--AIRFIELDS--

25X1A

CAMILO CIENFUEGOS AIRFIELD 2229N 07955W

AIRCRAFT -- 2 FISHBED, 2 FARMER, AND 3 FAGOT. VEHICLES OBSERVED INCLUDE 16 CARGO TRUCKS, 17 VAN TRUCKS, 14 TRACKED PRIME MOVERS, 13 UNIDENTIFIED VEHICLES, ONE BULLDOZER, AND ONE GRADER. SIX AAA PIECES AND NUMEROUS POL TANKS ARE ALSO OBSERVED IN THE AREA. HEAVY CLOUDS AND CLOUD SHADOW LIMIT INTERPRETATION.

25X1D



CAMAGUEY INTERNATIONAL AIRFIELD 2125N 07751W

9,400 X 200 FT ENE/WSW SERVICEABLE ASPHALT RUNWAY. SOD RUNWAY 5,000 X 200 FT WNW/ESE USED FOR PARKING, AND A TAXIWAY. NO APPARENT CHANGE IN GRADING AT THE

SECRET

SECRET

NPIC/R-1571/63

ENE END OF RUNWAY.  
FACILITIES INCLUDE 3 PARKING APRONS, 6 CIRCULAR  
PARKING HARDSTANDS, 4 REVETTED HANGARETTES AND 5 LINK  
TAXIWAYS. THE ADMINISTRATIVE AREA INCLUDES ONE  
LARGE T-SHAPED, 10 BARRACKS-TYPE, AND 5 OTHER  
BUILDINGS. A MAINTENANCE AREA WITH 2 LARGE AND 5  
SMALLER BUILDINGS, AND ONE MEDIUM TENT IS LOCATED AT  
THE WSW END OF RUNWAY.  
AIRCRAFT -- 2 FISHBED, 2 FARMER, 4 FAGOT, ONE COOT,  
2 CRATE, ONE C-47, 2 HOUND AND ONE LIAISON.  
ELEVEN CARGO TRUCKS AND 6 VAN TRUCKS OBSERVED. AN  
UNOCCUPIED 3-GUN AAA SITE IS LOCATED AT UTM 18Q TU  
033703 AND AN UNOCCUPIED 6-GUN AAA SITE IS LOCATED AT  
UTM 18Q TU 060715.  
(AMS SERIES E723, SHEET 4680-III, 2D ED).

25X1D



25X1A

HOLGUIN AIRFIELD 2047N 07618W



SUPPORT FACILITIES INCLUDE 3 T-SHAPED BARRACKS, 8  
H-SHAPED BARRACKS, 3 ADMINISTRATIVE-TYPE BUILDINGS, 3  
UTILITY BUILDINGS, A MOTOR POOL, 7 EARTH-COVERED  
AIRCRAFT REVETMENTS, ONE TOKEN-TYPE RADAR, AND ONE  
PROBABLE SPOON-REST OR KNIFE-REST RADAR.  
OCCUPIED 6-GUN AAA SITES OBSERVED AT UTM 18Q  
UT 639016, 18Q UT 616977, AND 18Q UT 635990, AND  
ONE UNOCCUPIED 6-GUN AAA SITE AT 18Q UT 618983.  
OCCUPIED 3-GUN AAA SITES ARE LOCATED AT 18Q UV 648007,  
18Q UV 651005, 18Q UT 620990, 18Q UT 622993, 18Q VT  
629983, 18Q VT 635988, AND 18Q VT 637990.  
AIRCRAFT -- 2 FISHBED, 2 FARMER, 8 FAGOT (ONE WITHOUT  
TAIL ASSEMBLY), 3 COLT, ONE CRATE, ONE C-47, 2 HOUND,  
2 HARE, AND 7 LIAISON OBSERVED IN CLOUD-FREE AREAS.  
(AMS SERIES E723, SHEET 4978 III, 1ST ED).

25X1D



25X1A

PRESTON AIRFIELD 2044N 07539W



SINGLE ASPHALT/CONCRETE SURFACED RUNWAY ORIENTED  
ENE/WSW APPROXIMATELY 4,000 X 120 FT. RUNWAY PROBABLY  
SERVICEABLE. ONE SMALL BUILDING ADJACENT TO  
RUNWAY OBSERVED.  
NO AIRCRAFT OBSERVED.

SECRET

SECRET

NPIC/R-1571/63

25X1D

[REDACTED]  
SAN ANTONIO DE LOS BANOS AIRFIELD 2252N 08230W

AIRCRAFT -- 26 FISHBED, ONE PARTIALLY DISASSEMBLED  
FARMER, 13 FAGOT/FRESCO, 4 POSSIBLE DUMMY  
FAGOT/FRESCO, ONE HOUND, AND NUMEROUS DERELICTS.  
SCATTERED CLOUDS AND CLOUD SHADOW LIMIT  
INTERPRETATION.

25X1A  
[REDACTED]

25X1D

[REDACTED]  
SAN JULIAN AIRFIELD 2205N 08409W

TWO SERVICEABLE ASPHALT RUNWAYS 7,000 X 150 FT  
ORIENTED N/S AND E/W WITH PARALLEL ASPHALT TAXIWAY  
CONNECTED BY 3 CROSS-OVER LINK TAXIWAYS. PARKING  
FACILITIES INCLUDE 8 HARD STANDS, AND A PARKING  
APRON 850 X 350 FT. SUPPORT FACILITIES INCLUDE ONE  
H-SHAPED OPERATIONS BUILDING, ONE LARGE 5-BAY SHOP  
BUILDING, AND 6 OTHER BUILDINGS. THE BARRACKS/  
WAREHOUSE AREA NW OF THE SUPPORT AREA CONTAINS 27  
BARRACKS FROM 100 X 25 FT TO 140 X 30 FT, 15  
WAREHOUSES FROM 80 X 35 FT TO 140 X 40 FT, 8  
ADMINISTRATIVE BUILDINGS, ONE ADMINISTRATIVE BUILDING  
UNDER CONSTRUCTION, A MOTOR POOL WITH A VEHICLE  
MAINTENANCE BUILDING, AND SEVERAL MISCELLANEOUS  
SUPPORT BUILDINGS.  
AIRCRAFT -- 2 FAGOT/FRESCO, 2 C-46, ONE HARE.  
THREE OCCUPIED 3-GUN AAA POSITIONS ARE LOCATED AT  
UTM 16Q GV 927474, 16Q GV 928461, AND 16Q GV 939470.  
PERSONNEL TRENCHES AND AUTOMATIC WEAPONS POSITIONS ARE  
SCATTERED THROUGHOUT THE SUPPORT AREA. PERSONNEL  
TRENCHES ARE ALSO LOCATED AROUND THE PERIMETER OF THE  
AIRFIELD.  
SEE ALSO SAN JULIAN AIRFIELD SAM SITES 1 AND 2.  
(AMS SERIES E723, SHEET 3382-11, 1ST ED).

25X1D  
[REDACTED]

SECRET

SECRET

NPIC/R-1571/63

25X1A

JOSE MARTI INTERNATIONAL AIRFIELD 2259N 08224W

AN 11,500 X 190 NE/SW ASPHALT/CONCRETE SERVICEABLE RUNWAY WITH 2 LOOP PARKING APRONS AT THE NE END. FACILITIES INCLUDE ONE LARGE TERMINAL BUILDING, AT LEAST 2 HANGARS AND APPROXIMATELY 20 MISCELLANEOUS SHOPS, MAINTENANCE AND STORAGE BUILDINGS. OPERATIONS AREA -- 2 CLEAT, ONE COOT, 2 BRITANNIA, 3 CONSTELLATION, 3 CRATE, ONE C-46, AND SEVERAL VEHICLES SCATTERED THROUGHOUT AREA. MAINTENANCE AREA -- 2 C-54, ONE B-26, ONE LODESTAR, 3 PROBABLE DERELICT C-46, AND 4 OTHER DERELICT MAJOR AIRCRAFT COMPONENTS. A PROBABLE 4-GUN OCCUPIED AAA SITE IS LOCATED AT UTM 17Q LR 568438. (AMS SERIES E723, SHEET 3784-IV, 4TH ED).

25X1D

CAMPO LIBERTAD AIRFIELD 2305N 08226W

AIRCRAFT -- ONE FAGOT/FRESCO, ONE PBY, ONE C-47, 3 COLT, AND 13 LIAISON OBSERVED IN CLOUD-FREE AREAS. THIRTY-NINE CARGO TRUCKS, 10 VAN TRUCKS, 19 POL TRUCKS, 3 TRUCK-MOUNTED CRANES, 12 CARGO TRAILERS, 4 FLATBED TRAILERS, AND 22 UNIDENTIFIED VEHICLES OR PIECES OF EQUIPMENT LOCATED AT THE SOUTH END OF THE NNW/SSE RUNWAY.

25X1A

25X1D

PLAYA BARACOA AIRFIELD 2302N 08235W

5,400 X 150 FT NNE/SSW SERVICEABLE ASPHALT RUNWAY, 1,200 X 370 FT ASPHALT OPERATIONS APRON CONNECTED BY TWO 35 FT WIDE TAXIWAYS WEST OF CENTER OF RUNWAY, 2 MAINTENANCE APRONS (415 X 345 FT AND 320 X 220 FT) WITH CONNECTING TAXIWAYS JUST EAST OF SOUTH END OF RUNWAY. OPERATIONS APRON CONTAINS AN OPERATIONS BUILDING, 2 LARGE SHOP BUILDINGS AND 7 SMALL HORIZONTAL POL TANKS. OPEN FIELD JUST WEST OF OPERATIONS AREA CONTAINS 4 SMALL BARRACKS-TYPE AND 2 OTHER BUILDINGS, AN OPEN STORAGE AREA WITH 23 HOUND FUSELAGE SHIPPING CRATES, 19 LARGE AND 18 SMALL SHIPPING CRATES, 2 CANVAS-COVERED AREAS AND CANVAS-COVERED MATERIAL.

SECRET

SECRET

NPIC/R-1571/63

MAINTENANCE AREA CONTAINS 2 HANGARS, 2 SHOPS, AND 5 MISCELLANEOUS BUILDINGS.  
 POL STORAGE AREA WEST OF SOUTH END OF RUNWAY CONTAINS 25 HORIZONTAL POL TANKS AND NUMEROUS POL DRUMS.  
 SUPPORT AREA EAST OF NORTH END OF RUNWAY CONTAINS 2 LARGE AND ONE SMALLER BUILDING.  
 PROBABLE ILS SYSTEM OBSERVED OFF THE SOUTH END OF THE RUNWAY AT UTM 17Q LR 378469.  
 AIRCRAFT -- 2 CRATE, ONE C-47, 32 HOUND (23 WITHOUT ROTORS), 2 HARE (ONE WITHOUT ROTOR), AND 2 BELL HELICOPTERS.  
 ONE LARGE (NOT OF A KNOWN SOVIET TYPE), AND ONE MEDIUM TENT, 12 HOUND FUSELAGE CRATES, 18 LARGE AND 2 SMALL SHIPPING CRATES, 16 CARGO TRUCKS, 20 VAN TRUCKS, 8 POL TRUCKS, 6 UTILITY TRUCKS, 6 CARGO TRAILERS, 2 VAN TRAILERS, AND VERTICAL POL TANKS SCATTERED THROUGHOUT THE AIRFIELD AREA.  
 DEFENSES CONSIST OF 3 OCCUPIED 3-GUN AAA SITES AT UTM 17Q LR 381470, 17Q LR 381484, AND 17Q LR 385484. (AMS SERIES E723, SHEET 3685-I, 4TH ED).

25X1D



25X1A

PINAR DEL RIO AIRFIELD 2225N 08341W



SINGLE 8,000 X 100 FT ASPHALT RUNWAY ORIENTED ENE/WSW.  
 SUPPORT FACILITIES INCLUDE ONE OPERATIONS BUILDING, ONE 4-BAY HANGAR, AND 2 SMALL HANGARS.  
 AIRCRAFT -- 3 COLT.

25X1D



25X1A

TRINIDAD AIRFIELD 2147N 07959W



25X1D A SINGLE HARD-SURFACE RUNWAY, APPROXIMATELY 4,000 X 120 FT, ORIENTED NE/SW.  
 25X1D FACILITIES INCLUDE 2 BUILDINGS, 50 X 25 FT AND [REDACTED] X [REDACTED] FT  
 25X1D [REDACTED] AND 2 BUILDINGS UNDER CONSTRUCTION, [REDACTED] FT  
 25X1D AND [REDACTED]  
 TWENTY CARGO TRUCKS (16 WITH FA PIECES IN TOW), OBSERVED PARKED ON RUNWAY.  
 AIRCRAFT -- ONE HOUND.

25X1D



SECRET



SECRET

NPIC/R-1571/63

SANTA FE AIRFIELD 2304N 08230W

LOCATED AT THE SE EDGE OF SANTA FE AT  
23-04-18N 082-30-41W (UTM 17Q LR 453522.)  
3,400 X 225 FT NE/SW RUNWAY OF WHICH 2,700 FT IS  
SOD, WITH 350 FT ASPHALT SECTIONS ON EACH END.  
FACILITIES INCLUDE AN OPERATIONS BUILDING, ONE LONG  
SHED-TYPE HANGAR AND 11 SMALL HANGARS.  
NO AIRCRAFT OBSERVED.  
(AMS SERIES E723, SHEET 3685-II).

25X1D

CAIBARIEN AIRFIELD 2230N 07928W

LOCATED ONE NM SOUTH OF CAIBARIEN.  
2,300 X 50 FT NE/SW HARD-SURFACE RUNWAY, SERVICEABLE  
FOR LIGHT AIRCRAFT.  
NO AIRCRAFT OBSERVED.

25X1D

-PORTS-

25X1A

MARIEL NAVAL BASE AND NAVAL AIR STATION 2259N 08244W

ONE ENE/WSW CONCRETE RUNWAY 11,500 X 150 FT.  
SERVICEABILITY IS LIMITED BY FENCE ERECTED ADJACENT  
TO SOUTH EDGE OF RUNWAY AT INTERSECTION WITH PARKING  
APRON.  
FACILITIES SOUTH OF THE RUNWAY INCLUDE A CONCRETE  
SEAPLANE RAMP, ONE LARGE HANGAR, ONE OPERATIONS  
BUILDING AND CONTROL TOWER, ONE H-SHAPED AND ONE  
QUADRANGULAR-SHAPED ADMINISTRATIVE BUILDING,  
7 BARRACKS, 7 STORAGE BUILDINGS, ONE VEHICLE SHED, ONE  
EQUIPMENT SHED, 7 MISCELLANEOUS SUPPORT BUILDINGS, AND  
ONE LARGE AND ONE MEDIUM TENT (NONE OF A KNOWN SOVIET  
TYPE). ONE VAN TRUCK, 4 CARGO TRUCKS, ONE POL TRUCK,  
ONE PROBABLE MOBILE CRANE, 2 UNIDENTIFIED VEHICLES,  
6 LARGE, 4 MEDIUM AND 5 SMALL POL STORAGE TANKS AND  
NUMEROUS PIECES OF UNIDENTIFIED MATERIAL OBSERVED IN  
AREA.  
A SUPPORT AREA AT THE EAST END OF THE RUNWAY CONTAINS  
ONE LARGE, IRREGULAR-SHAPED BUILDING, 3 BARRACKS,  
11 STORAGE BUILDINGS, ONE LARGE AND ONE MEDIUM TENT  
(NOT OF A KNOWN SOVIET TYPE), ONE VAN TRUCK, 13 CARGO  
TRUCKS, 2 UTILITY TRUCKS, 10 UNIDENTIFIED VEHICLES.

SECRET

SECRET

NPIC/R-1571/63

3 CARGO TRAILERS, ONE PROBABLE GENERATOR, AND UNIDENTIFIED EQUIPMENT OR MATERIAL IN OPEN STORAGE. A SMALL SUPPORT AREA AT WEST END OF RUNWAY INCLUDES ONE ADMINISTRATIVE, 2 STORAGE AND ONE SUPPORT BUILDING AND A SECURED AREA CONTAINING A FLAT-ROOFED BUILDING AND ONE LARGE POL TANK.

LOCATED NORTH OF THE AIRFIELD ARE 3 LARGE AND 4 MEDIUM TENTS (ONE NOT OF A KNOWN SOVIET TYPE), ONE REVETTED STORAGE SHED, ONE ARCH-ROOFED STORAGE BUNKER, ONE SMALL SUPPORT BUILDING AND 3 PIERS. ONE VAN TRUCK AND ONE UNIDENTIFIED PIECE OF EQUIPMENT OBSERVED IN AREA. NO AIRCRAFT OBSERVED.

DEFENSES INCLUDE AN OCCUPIED 6-GUN AAA SITE AT UTM 17Q LR 184449.

OTHER PORT FACILITIES INCLUDE MARANTE WHARF, MARIEL CITY PIER AND NORTH PIER. ONE LARGE MOBILE CRANE OBSERVED AT MARIEL CITY PIER.

VESSLS -- ONE PF [REDACTED] 4 KOMAR-CLASS PGMG, AND 3 SMALL PC.

FOR ADDITIONAL INFORMATION SEE MARIEL MORRO CEMENT PLANT.

(AMS SERIES E 723, SHEET 3685-III, 1ST ED).

25X1D

25X1D

BANES NAVAL BASE 2055N 07542W

25X1A

SIX CARGO TRUCKS, ONE UTILITY TRUCK, THE PREVIOUSLY REPORTED 11 UNIDENTIFIED CRATES, TRENCHWORK ALONG THE WATER FRONT, AND 2 GABLE ROOFED STORAGE/MAINTENANCE BUILDINGS OBSERVED IN CLOUD-FREE AREAS.

AN OCCUPIED 3-GUN LIGHT AAA POSITION IS LOCATED 0.6 NM NORTH AT 18Q VU 267141.

(AMS SERIES E723, SHEET 5078-I, 1ST ED).

25X1D

CIENFUEGOS PORT 2208N 08027W

25X1A

FACILITIES INCLUDE 11 PIERS (ONE RAIL AND 2 PIPELINE), ONE QUAY AND 2 WHARVES, 2 MARINE RAILWAYS AND ASSOCIATED SHIPYARD FACILITIES. PORT IS RAIL- AND ROAD-SERVED. FACILITIES AT THE NAVAL BASE ON CAYO LOCO INCLUDE ONE HEADQUARTERS BUILDING, 3 BARRACKS, ONE STORAGE BUILDING, ONE PROBABLE SHOP BUILDING, 6 SUPPORT BUILDINGS (ONE UNDER CONSTRUCTION) [REDACTED]

25X1D

SECRET

NPIC/R-1571/63

25X1D

[REDACTED]  
VESSELS -- 2 KRONSHADT-CLASS PC, 6 PT, 3 PC, 2 LARGE FREIGHTERS, 4 COASTAL TANKERS AND ONE UNIDENTIFIED VESSEL.

25X1D

[REDACTED]

CASILDA PORT 2145N 07959W

25X1A

ONE MAIN PIER APPROXIMATELY [REDACTED] FT AND ONE WHARF 600 FT LONG. FACILITIES INCLUDE ONE LARGE WAREHOUSE 270 X 35 FT (ON WHARF), 6 LARGE, 9 MEDIUM, AND ONE SMALL STORAGE TANK. THREE MARINE RAILWAYS APPEAR TO BE USED FOR SMALL FISHING CRAFT. AREA IS ROAD- AND RAIL- (5 TRACKS) SERVED. DEFENSES INCLUDE ONE LONG TRENCH 18,400 FT WITH FIRING BAYS, CENTERED AT UTM 17Q PQ 161038, ONE SMALL TRENCH AND 3 UNOCCUPIED FA POSITIONS AT 17Q PQ 046059 AND ONE SMALL TRENCH AT 17Q PQ 048060.

25X1D

VESSELS -- NUMEROUS SMALL FISHING CRAFT. (AMS SERIES E723, SHEET 4281-III, 1ST ED).

25X1D

[REDACTED]

HAVANA PORT 2308N 08221W

25X1A

VESSELS -- ONE PF, 2 KRONSHADT-CLASS PC, 3 PCE (ONE POSSIBLE), 4 KOMAR-CLASS PGMG (ONE ON MARINE RAILWAY), 2 PT, 25 LARGE FREIGHTERS, 2 LARGE TANKERS, 4 COASTAL FREIGHTERS, ONE COASTAL TANKER, AND 10 TRAWLERS OBSERVED IN CLOUD-FREE AREAS.

25X1D

[REDACTED]

CABANAS PORT 2259N 08256W

25X1A

PORT IS ROAD- AND RAIL-SERVED. FACILITIES INCLUDE A 500 FT QUAY, A 160 FT PIER, 4 MINOR FISHING PIERS, A RAIL-SERVED MOLASSES PIER WITH ONE SMALL STORAGE TANK, AND SEVERAL SMALL STORAGE SHEDS. FOUR SMALL CRAFT AND A FLOATING CRANE OBSERVED. INCOMPLETE PHOTOGRAPHIC COVERAGE PRECLUDES FURTHER INTERPRETATION.

25X1D

[REDACTED]

SECRET

NPIC/R-1571/63

ANTILLA PORT FACILITIES 2049N 07544W

FACILITIES INCLUDE 2 PIERS (ONE WITHOUT DECKING AND APPARENTLY UNSERVICEABLE), 2 WHARVES, 3 LARGE WAREHOUSES, 7 MOLASSES TANKS, 2 ELEVATED WATER TANKS, AND 2 LARGE STORAGE TANKS. PORT IS RAIL-SERVED. VESSELS -- ONE SMALL PROBABLE PC, ONE COASTAL FREIGHTER AND ONE TUG BOAT.

25X1D

PRESTON PORT FACILITIES 2046N 07539W

ONE PIER APPROXIMATELY 1,050 FT LONG IS RAIL-SERVED AND HAS A PIPELINE. A SECOND PIER IS APPROXIMATELY 300 FT LONG AND IS RAIL-SERVED BY SINGLE TRACK. OTHER FACILITIES INCLUDE 6 STORAGE TANKS (ONE 125 FT, TWO 100 FT, TWO 50 FT, AND ONE 40 FT IN DIAMETER), ONE RAIL-SERVED WAREHOUSE APPROXIMATELY 450 X 150 FT, A 6-TRACK RAILROAD HOLDING YARD 500 FT LONG, A 7-TRACK CLASSIFICATION YARD 1,600 FT LONG, AND ONE SMALL MARINE RAILWAY.

25X1D

GIBARA PORT FACILITIES 2106N 07607W

PREVIOUSLY REPORTED T-HEAD PIER SUSTAINED HEAVY STORM DAMAGE. PLANKING FROM MAIN SECTION AND ONE ENTIRE END OF T-HEAD ARE TORN AWAY. A LARGE WAREHOUSE AT THE BASE OF THE PIER HAS EXTENSIVE ROOF DAMAGE. HIGHWAY BRIDGE SW OF TOWN AT UTM 18Q UU 821334 IS OUT AND ROAD SE OF BRIDGE HAS EXTENSIVE WASHED-OUT SECTIONS.

APPROXIMATELY 8 SMALL CRAFT OBSERVED. MINOR TRENCHES ARE LOCATED ALONG THE BEACHES NE AND SE OF THE TOWN. TWO OCCUPIED PROBABLE 3-GUN AAA SITES ARE LOCATED AT UTM 18Q UU 820336. (AMS SERIES E723, SHEET 4979 II, 1ST ED). (SEE ATTACHMENT 2)

25X1D

SECRET

SECRET

NPIC/R-1571/63

-ELECTRONICS-

25X1A

HAVANA COMMUNICATIONS CENTER 2301N 08226W

EIGHT BARRACKS BUILDINGS, 5 OTHER BUILDINGS, AND APPROXIMATELY 20 UNIDENTIFIED VEHICLES OBSERVED. CLOUD SHADOW LIMITS INTERPRETATION.

25X1D

BAUTA COMMUNICATIONS STATION 2257N 08232W

TRANSMITTING SITE -- (UTM 17Q LR 415388). LOCATED 2 NM SOUTH OF BAUTA. ROAD-SERVED, SECURED AREA WITH A CONTROL BUILDING AND ADJACENT SELF SUPPORTING LATTICE TOWER, 3 ASSOCIATED BUILDINGS, 4 RHOMBIC ANTENNAS, 4 HORIZONTAL DIPOLE ANTENNAS, 3 GUARD TOWERS, AND 4 UNOCCUPIED AAA POSITIONS OBSERVED IN CLOUD-FREE AREAS. (AMS SERIES E723, SHEET 3684-I, 3D ED).  
RECEIVING SITE -- (UTM 17Q LR 475373). LOCATED 3.2 NM EAST OF TRANSMITTING SITE AT 22-56-18N 82-29-24W. ROAD-SERVED SECURED AREA WITH 2 CONTROL BUILDINGS AND 12 RHOMBIC ANTENNAS OBSERVED IN CLOUD-FREE AREAS. (AMS SERIES E723, SHEET 3784-IV, 4TH ED).

25X1D

BELLAVISTA POSS MICROWAVE STATION 2300N 08136W

LOCATED .2 NM SW OF BELLAVISTA AT 23-00-48N 081-36-24W. A POSSIBLE MICROWAVE STATION CONTAINS ONE BUILDING WITH A SELF-SUPPORTING TOWER. THE AREA IS SECURED BY A SINGLE FENCE. UTM 17Q MR 377446. (AMS SERIES E723, SHEET 3885-II, 3D ED).

25X1D

CAMAGUEY AREA, ELECTRONICS INSTALLATION 2121N 07752W

LOCATED 3.4 NM SSE OF CAMAGUEY. SITE CONTAINS ONE CONTROL BUILDING AND ONE LATTICE TOWER WITH 2 SMALL ASSOCIATED BUILDINGS.

SECRET

SECRET

NPIC/R-1571/63

UTM 18Q TU 020635.  
(AMS SERIES E723, SHEET 4680-III, 2ND ED).

25X1D

CARABALLO RADAR INSTALLATION 2303N 08155W

LOCATED .5 NM SE OF CARABALLO.  
THREE LONGITUDINAL DEPRESSIONS (ONE VAN TRUCK IN  
EACH OF TWO AND AN UNIDENTIFIED PIECE OF EQUIPMENT  
IN THE THIRD), 5 BARRACKS, 2 OTHER BUILDINGS, 2  
ADDITIONAL VAN TRUCKS AND ONE CARGO TRUCK OBSERVED.  
SIX REVETTED AAA GUNS SURROUND THE AREA.

25X1D

COJIMAR PROBABLE ELECTRONICS INSTALLATION 2308N 08219W

LOCATED 1.8 NM WSW OF COJIMAR AND 1.3 NM EAST OF  
CABANA FORTRESS.  
PROBABLE ELECTRONICS INSTALLATION CONSISTING OF 4  
LARGE (NONE OF A KNOWN SOVIET TYPE) AND 3 MEDIUM  
TENTS, 7 VAN TRUCKS, AND 2 UNIDENTIFIED VEHICLES OR  
PIECES OF EQUIPMENT OBSERVED IN CLOUD-FREE AREAS.  
UTM 17Q LR 643604.  
(AMS SERIES E723, SHEET 3785-III, 4TH ED).

25X1D

COLISEO, MICROWAVE TOWER 2255N 08119W

TWO MICROWAVE STATIONS OBSERVED. ONE AT UTM  
17Q MR 685342 CONTAINS ONE FLAT-ROOFED SINGLE-STORIED  
BUILDING, ONE SMALL BUILDING AND TOWER. THE OTHER  
AT UTM 17Q MR 679341 CONTAINS ONE SINGLE-STORIED  
FLAT-ROOFED BUILDING AND TOWER.  
(AMS SERIES E723, SHEET 3984-IV, 2ND ED).

25X1D

CUATRO CAMINOS RADIO STATION 2300N 08213W

LOCATED .7 NM WEST OF CUATRO CAMINAS.  
ONE MICROWAVE TOWER, 2 CONTROL BUILDINGS, 2 FISHBONE  
ANTENNA ARRAYS, AND ONE RHOMBIC ANTENNA OBSERVED IN

SECRET

SECRET

NPIC/R-1571/63

CLOUD-FREE AREAS.

25X1D

EL CANO PROBABLE AIR NAVIGATION AID 2303N 08228W

LOCATED 1.4 NM NW OF EL CANO AT UTM 17Q LR 489498.  
PROBABLE AIR NAVIGATION BEACON CONSISTING OF A  
MASTER CONTROL BUILDING, 2 SELF-SUPPORTING LATTICE  
TOWERS WITH SWITCHING FACILITIES, 2 SELF-SUPPORTING  
LATTICE TOWERS WITH TUNING SHACKS, 2 GUYED VERTICAL  
RADIATORS (PROBABLE HF/DF), AND ONE SELF-SUPPORTING  
LATTICE TOWER WITH TOP-MOUNTED ARRAY (POSSIBLE VHF  
COMMUNICATIONS).

(AMS SERIES E723, SHEET 3785-III, 4TH ED).

25X1D

HAVANA RADIO STATION NARANJITO 2304N 08223W

THREE MAJOR BUILDINGS, ONE SELF-SUPPORTING LATTICE  
TOWER, AND ONE CARGO TRUCK OBSERVED.

UTM 17Q LR 582530.

(AMS SERIES E723, SHEET 3785-III, 4TH ED).

25X1D

HAVANA, TELEVISION STATION REGLA 2307N 08220W

ONE LATTICE TOWER AND 3 BUILDINGS OBSERVED AT UTM  
17Q LR 634572.

(AMS SERIES E723, SHEET 3785-III, 4TH ED).

25X1D

HAVANA, RADIO FACILITY GUANABACOA EAST 2308N 08216W

THREE LATTICE TOWERS AND 3 SMALL BUILDINGS OBSERVED  
AT UTM 17Q LR 694579.

(AMS SERIES E723, SHEET 3785-III, 4TH ED).

25X1D

SECRET

HAVANA RADIO FACILITY REGLA 2307N 08219W

ONE SELF-SUPPORTING LATTICE TOWER WITH AN ASSOCIATED BUILDING OBSERVED AT UTM 17Q LR 652582. (AMS SERIES E723, SHEET 3785-III, 4TH ED).

25X1D

HAVANA RADIO FACILITY GUANABACOA 2307N 08218W

LOCATED JUST SOUTH OF GUANABACOA. A GUYED TOWER WITH A CONTROL BUILDING OBSERVED.

25X1D

HAVANA AREA, COMMUNICATIONS INSTALLATION 2302N 08227W

LOCATED .6 NM NNE OF EL CAND AT 23-02-33N 082-27-24W. ONE CONTROL BUILDING AND ONE GUYED LATTICE TOWER (PROBABLE HF TRANSMISSION TOWER) OBSERVED AT UTM 17Q LR 508489. (AMS SERIES E723, SHEET 3785-III, 4TH ED).

25X1D

HAVANA RADIO STATION SAN AGUSTIN SE 2301N 08225W

LOCATED 1.6 NM NNW OF WAJAY. PARTIALLY FENCED AREA CONTAINING 3 CONTROL BUILDINGS, ONE SUPPORT BUILDING, 2 COOLING PONDS, 2 RHOMBIC ANTENNA ARRAYS (EACH 700 X 270 FT), AND 2 GUYED LATTICE TOWERS. SCATTERED CLOUDS LIMIT FURTHER INTERPRETATION.

25X1D

HAVANA RECEIVING STATION CALABAZAR 2300N 08219W

LOCATED 2.1 NM EAST OF CALABAZAR. STATION CONSISTS OF 2 INTER-CONNECTED CONTROL BUILDINGS (OVERALL DIMENSIONS 220 X 160 FT), 2 SMALLER BUILDINGS, A SELF-SUPPORTING LATTICE TOWER, 4 FISH-BONE ANTENNA ARRAYS, AND 11 RHOMBIC ANTENNA ARRAYS.



SECRET

NPIC/R-1571/63

25X1D

[REDACTED]  
RANCHO BOYEROS, UHF COMMUNICATIONS STN 2259N 08223W

LOCATED JUST SOUTH OF MAIN HANGAR AREA OF JOSE MARTI AIRFIELD.  
ONE GUYED LATTICE TOWER WITH A SMALL BUILDING AT ITS BASE, AT LEAST 3 SMALL LATTICE TOWERS, ONE CONTROL BUILDING AND ONE SMALL BUILDING OBSERVED IN WOODS.

25X1D

[REDACTED]  
SANTA CLARA, PROBABLE RADIO TOWERS 2224N 07957W

ONE SELF-SUPPORTING LATTICE TOWER OBSERVED AT UTM 17Q PQ 086774.  
THE PREVIOUSLY-REPORTED SECOND TOWER AND THE BUILDING HAVE BEEN DISMANTLED.

25X1D

[REDACTED]  
SANTIAGO DE LAS VEGAS RECEIVING STATION 2258N 08225W

LOCATED JUST OFF THE SW END OF JOSE MARTI AIRFIELD AND 2.1 NM WNW OF SANTIAGO DE LAS VEGAS AT UTM 17Q LR 538415.  
TEN RHOMBIC ANTENNA ARRAYS OBSERVED IN CLOUD-FREE AREAS.  
(AMS SERIES E723, SHEET 3784-IV, 4TH ED).

25X1D

-MILITARY ACTIVITY-

25X1A

[REDACTED]  
PINAR DEL RIO MILITARY CAMP 2223N 08342W

FACILITIES CONSIST OF APPROXIMATELY 40 BUILDINGS (AT LEAST 4 BARRACKS-TYPE), ONE OPEN-SIDE SHELTER UNDER CONSTRUCTION, AND 3 LARGE, 2 MEDIUM, AND ONE SMALL TENT.  
THIRTY-NINE CARGO TRUCKS, 3 VAN TRUCKS, 5 UTILITY TRUCKS, AND 2 CARGO TRAILERS OBSERVED.

25X1D

SECRET

SECRET

NPIC/R-1571/63

25X1A

LA FLORA MILITARY STORAGE 2252N 08233W

STORAGE AND VEHICLE PARKING AREA LOCATED IN A WOODED AREA AT 22-52-24N 082-33-30W (UTM 17Q LR 403302) CONTAINS LOOPING ROADS AND NUMEROUS VEHICLE PARKING HARDSTANDS, 8 LARGE SHEDS, 25 MEDIUM SHEDS OR SUPPORT BUILDINGS, 3 SMALL BUILDINGS, 3 LARGE FARM BUILDINGS, AND A PARTIALLY COMPLETED ATHLETIC TRACK. NO VEHICLES OBSERVED.

TEN UNIDENTIFIED VEHICLES ARE PARKED ON A HARDSTAND AMONG THE TREES .4 NM NORTH OF THE MAIN VEHICLE PARKING AREA.

A MOTOR POOL AREA LOCATED AT 22-52-10N 082-33-04W (UTM 17Q LR 409298) CONTAINS ONE LARGE MAINTENANCE SHED, 2 MISCELLANEOUS BUILDINGS, 23 CARGO TRUCKS, AND ONE UNIDENTIFIED VEHICLE.

A SECURED AREA AT 22-52-39N 082-34-00W (UTM 17Q LR 393308) CONTAINS 4 ARCH-ROOFED STRUCTURES APPROXIMATELY 30 X 35 FT, 2 SMALL BUILDINGS AND ONE BUILDING FOUNDATION.

(AMS SERIES E723, SHEET 3684-I, 3RD ED).

25X1D

25X1A

ARTEMISA MILITARY CAMP 2251N 08248W

FACILITIES INCLUDE ONE T-SHAPED BUILDING, 20 BARRACKS, 11 SUPPORT BUILDINGS IN BARRACKS AREA, 10 OTHER SUPPORT BUILDINGS, 9 SMALL SHEDS, 91 LARGE (73 NOT OF A KNOWN SOVIET TYPE) AND 6 MEDIUM TENTS (5 NOT OF A KNOWN SOVIET TYPE). THIRTY-ONE CARGO TRUCKS OBSERVED.

THE 6-GUN AAA SITE REMAINS OCCUPIED.

SCATTERED CLOUDS LIMIT FURTHER INTERPRETATION.

25X1D

MARIEL MILITARY CAMP LOMA GOBERNADORA 2256N 08251W

FACILITIES INCLUDE ONE ADMINISTRATIVE OR WAREHOUSE BUILDING, ONE BARRACKS BUILDING, 2 SHED-TYPE BUILDINGS (400 X 30 FT AND 200 X 30 FT), 4 AMMUNITION STORAGE BUILDINGS WITH BLAST WALLS, AND 5 OTHER BUILDINGS. SIXTEEN CARGO TRUCKS, ONE SEDAN AND 4 FA PIECES OBSERVED.

AN OCCUPIED 3-GUN LIGHT AAA POSITION IS LOCATED AT

SECRET

SECRET

NPIC/R-1571/63

UTM 17Q LR 101371.  
CAMP PERIMETER CONTAINS NUMEROUS TRENCHES AND AW  
POSITIONS.  
(AMS SERIES E723, SHEET 3684-IV, 2D ED.)

25X1D

25X1A

HOLGUIN MILITARY CAMP 2053N 07614W

MAIN CAMP -- FACILITIES INCLUDE 70 LARGE (18 NOT OF A  
KNOWN SOVIET TYPE), 17 MEDIUM (3 NOT OF A KNOWN SOVIET  
TYPE) AND 22 SMALL TENTS.  
TWENTY-NINE T-34/85 TANKS (27 CANVAS-COVERED),  
7 SU-100 SELF-PROPELLED GUNS, ONE BTR-50P  
(PARTIALLY CANVAS-COVERED), 2 CANVAS-COVERED PROBABLE  
TANK RECOVERY VEHICLES, ONE AT-T WITH DOZER BLADE,  
ONE UNIDENTIFIED CANVAS-COVERED TRACKED VEHICLE, 9  
SNAPPERS (8 CANVAS-COVERED), 4 BRDM APC, 154 CARGO  
TRUCKS, 19 VAN TRUCKS, 31 UTILITY TRUCKS, 3 POL  
TRUCKS, 13 PROBABLE MOTORCYCLES, 17 CARGO TRAILERS,  
3 TRUCK-MOUNTED TREADWAY BRIDGES, 10 AAA PIECES, 12  
FA PIECES, AND 16 MORTARS OBSERVED. THE 6-GUN AAA  
SITE IS UNOCCUPIED AND 6 AAA PIECES ARE LOCATED AT THE  
9-GUN AAA SITE.

ENCAMPMENT .6 NM SE -- FACILITIES INCLUDE 8 BARRACKS  
(ONE WITH ROOF PARTIALLY COLLAPSED OR DISMANTLED),  
13 SUPPORT BUILDINGS (2 WITH ROOF DAMAGE), AND 2 LARGE  
(NOT OF A KNOWN SOVIET TYPE) AND 2 MEDIUM TENTS.  
ONE CARGO TRUCK AND ONE PROBABLE TANK TRUCK OBSERVED.  
THE 9-GUN AAA SITE REMAINS UNOCCUPIED. SCATTERED  
CLOUDS LIMIT INTERPRETATION.

ENCAMPMENT 2.2 NM SE -- FACILITIES INCLUDE 4 BARRACKS  
(ONE WITH ROOF DAMAGE), 7 SUPPORT BUILDINGS (ONE WITH  
ROOF DAMAGE), AND 3 LARGE (NONE OF A KNOWN SOVIET  
TYPE) AND 7 SMALL TENTS. ONE CARGO TRUCK AND 15 FA  
PIECES OBSERVED.

(SEE ATTACHMENT 3)

25X1D

25X1A

CAMAGUEY MILITARY CAMP COUNTRY CLUB 2121N 07751W

FOURTEEN BARRACKS (13 WITH ROOF DAMAGE), 3 SUPPORT  
BUILDINGS (2 WITH ROOF DAMAGE), 25 LARGE (5 NOT OF A  
KNOWN SOVIET TYPE), 10 MEDIUM AND 14 SMALL TENTS, 26  
VAN TRUCKS, 2 CARGO TRUCKS, 3 UTILITY TRUCKS AND 3

SECRET

VAN TRAILERS OBSERVED IN CLOUD-FREE AREAS.

25X1D



25X1A



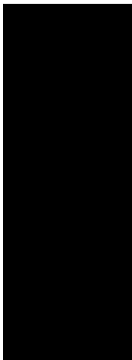
REMEDIOS MILITARY CAMP 2226N 07934W

MAIN CAMP --- 12 BARRACKS, ONE U-SHAPED, ONE T-SHAPED, AND 17 SUPPORT BUILDINGS, 8 LARGE (6 NOT OF A KNOWN SOVIET TYPE) AND 5 MEDIUM (NONE OF A KNOWN SOVIET TYPE) TENTS, 9 SNAPPERS, 241 CARGO TRUCKS, 20 VAN TRUCKS, 25 UTILITY TRUCKS, 9 POL TRUCKS, 3 UNIDENTIFIED VEHICLES, 12 CARGO TRAILERS, AND 13 FA PIECES OBSERVED IN CLOUD-FREE AREAS.  
ENCAMPMENT .8 NM NW --- NO EQUIPMENT OR ACTIVITY OBSERVED IN CLOUD-FREE AREAS. THE 6-GUN AAA SITE IS UNOCCUPIED.  
ENCAMPMENT 2.3 NM SE --- APPROXIMATELY 10 BUILDINGS, 15 LARGE (11 NOT OF A KNOWN SOVIET TYPE), AND 6 MEDIUM (NONE OF A KNOWN SOVIET TYPE) TENTS, AND 3 CARGO TRUCKS OBSERVED IN CLOUD-FREE AREAS. THE 6-GUN AAA SITE HAS 3 OCCUPIED POSITIONS.  
SCATTERED CLOUDS AND CLOUD SHADOW LIMIT INTERPRETATION.

25X1D



25X1A



MINAS AMMUNITION STORAGE AREA 2307N 08211W

NINE EARTH-MOUNDED STORAGE BUILDINGS ENCLOSED BY A SINGLE FENCE.  
NO VEHICLES OR EQUIPMENT OBSERVED.

25X1D



HAVANA AMMUNITION STORAGE AREA 2301N 08226W

SECURED ROAD-SERVED AREA CONTAINS ONE LARGE AND



25X1D  
25X1D

AND ONE SMALL BUILDING. A GUARD SHACK AND A VEHICLE SHED ARE ON ACCESS ROAD ADJACENT TO ENTRANCE GATE. ONE FLATBED TRACTOR-TRAILER TRUCK OBSERVED AT ENTRANCE TO LARGE BUNKER.

25X1D



SECRET

NPIC/R-1571/63

25X1A

SANTIAGO DE LAS VEGAS AREA MILITARY CAMP 2258N 08220W

AT LEAST 31 VARIOUS-SIZE BARRACKS AND MISCELLANEOUS BUILDINGS AND 14 LARGE (3 NOT OF A KNOWN SOVIET TYPE), 3 MEDIUM (ONE NOT OF A KNOWN SOVIET TYPE), AND 4 SMALL TENTS, 7 CANVAS-COVERED TANKS, 7 CANVAS-COVERED SP GUNS, 5 CANVAS-COVERED PROBABLE SP GUNS, 5 FROG MISSILE TRANSPORTERS, 8 PROBABLE FROG MISSILE TRANSPORTERS, 2 PROBABLE FROG LAUNCHERS, 2 UNIDENTIFIED TRACKED VEHICLES, 37 CARGO TRUCKS, 3 VAN TRUCKS, 3 PROBABLE TRUCK-MOUNTED TREADWAY BRIDGES, 17 UNIDENTIFIED VEHICLES, AND TWO CANVAS-COVERED VEHICLE PARKING AREAS OBSERVED. THE 6-GUN AAA SITE IS OCCUPIED AND 4 POSITIONS OF THE 9-GUN AAA SITE ARE OCCUPIED. SCATTERED CLOUDS AND CLOUD SHADOW LIMIT INTERPRETATION.

25X1D

25X1A

TORRENS MILITARY COMPLEX 2259N 08228W

AREA 1 -- 10 MULTI-STORY REFORMATORY BUILDINGS, 4 OTHER BUILDINGS, ONE WATER TOWER, 22 LARGE, 2 MEDIUM AND 2 SMALL TENTS, 12 VAN TRUCKS, 7 CARGO TRUCKS, ONE UTILITY TRUCK, ONE PROBABLE CARGO TRAILER, ONE SWIMMING POOL, ONE BASEBALL DIAMOND, ONE ATHLETIC OVAL, ONE BASKETBALL COURT AND ONE SOCCER FIELD. AREA 2, WEST AREA -- 6 BARRACKS-TYPE BUILDINGS AND 2 SUPPORT BUILDINGS, ONE LARGE TENT AND A VEHICLE PARKING AREA WITH ONE SHED, 39 CARGO TRUCKS, 16 VAN TRUCKS, 4 CARGO TRAILERS, 18 UTILITY TRUCKS AND 3 UNIDENTIFIED VEHICLES. AREA 2, EAST AREA -- 12 PROBABLE BARRACKS, 3 OTHER BUILDINGS, ONE SHED, 8 CARGO TRUCKS (IN FORMATION ON ROAD) AND 7 PROBABLE CARGO TRAILERS OBSERVED IN CLOUD- AND SHADOW-FREE AREAS. AREA 3 -- ONE SMALL STRUCTURE, 2 CANVAS-COVERED AREAS, ONE UNIDENTIFIED VEHICLE, AND 2 VACANT VEHICLE PARKING AREAS. AREA 4 -- PARTIALLY FENCED VEHICLE PARKING AREA CONTAINS 33 CARGO TRUCKS, 10 CARGO TRAILERS, 8 UNIDENTIFIED VEHICLES, AND NUMEROUS STACKS OF LUMBER IN OPEN STORAGE. AREA 5 -- ONE BARRACKS, 2 SMALL BUILDINGS, 4 SHEDS, 2

SECRET

SECRET

NPIC/R-1571/63

LARGE AND 3 SMALL TENTS, 10 CANVAS-COVERED TRACKED PRIME MOVERS, 17 CARGO TRUCKS, AND 3 CARGO TRAILERS. THE 6-GUN AAA SITE IS OCCUPIED. AREA 6 -- 2 LARGE AND ONE SMALL T-SHAPED, 2 ADMINISTRATIVE-TYPE, ONE LARGE AND 7 SMALLER STORAGE-TYPE, AND 9 OTHER BUILDINGS, ONE VEHICLE SERVICE RAMP, 27 CARGO TRUCKS, 2 UNIDENTIFIED VEHICLES, AND 15 HORIZONTAL POSSIBLE POL TANKS. AREA 6, TANK PARKING AREA -- ONE LARGE TENT (NOT OF A KNOWN SOVIET TYPE), 3 HARDSTANDS LOCATED IN TREES CONTAINING 6 PROBABLE T-34/85 TANKS AND 10 SP GUNS. ONE ATHLETIC TRACK, ONE BASEBALL DIAMOND, AND A TANK DRIVING RANGE ARE LOCATED IN THE AREA.  
(SEE ATTACHMENT 4)

25X1D

MADRUGA MILITARY AREA 2256N 08149W

FIVE BARRACKS, ONE ADMINISTRATIVE BUILDING, 3 LARGE STORAGE BUILDINGS, 16 LARGE POL SHEDS, 4 LARGE (NONE OF A KNOWN SOVIET TYPE) AND ONE SMALL TENT, 3 VAN TRUCKS, 4 CARGO TRUCKS, 3 POL TRUCKS, ONE UTILITY TRUCK, AND ONE UNIDENTIFIED VEHICLE OBSERVED. NUMEROUS POL STORAGE TANKS AND POL DRUMS OBSERVED THROUGHOUT AREA. AREA IS SECURED BY A SINGLE FENCE.

25X1A

25X1D

CAMAGUEY MILITARY CAMP 2126N 07753W

25X1D

25X1D

CAMP CONTAINS 4 BARRACKS-TYPE BUILDINGS AND 3 SMALLER SUPPORT BUILDINGS, A MESS AREA WITH ONE BUILDING, A SECURED STORAGE AREA WITH ONE BUILDING AND A WATER TANK, A MOTOR PARK WITH 2 PROBABLE VEHICLE SHEDS. THIRTY-THREE CARGO TRUCKS, ONE UTILITY TRUCK, ONE UNIDENTIFIED VEHICLE, 30 FA PIECES AND 18 MORTARS OBSERVED.

25X1D

SECRET

SECRET

NPIC/R-1571/63

25X1A

MANAGUA MILITARY CAMP 2258N 08217W

ASPHALT/CONCRETE E/W RUNWAY 7,000 X 150 FT WITH A 470 FT GRAVEL EXTENSION OR OVERRUN AT EAST END. RUNWAY IS SERVICEABLE. AIRCRAFT -- 4 HOUND. FACILITIES INCLUDE 19 BARRACKS, 67 OTHER BUILDINGS, 14 LARGE AND 3 MEDIUM TENTS (NONE OF A KNOWN SOVIET TYPE), ONE OUTDOOR THEATER, 2 WATER STORAGE TANKS, ONE TANK DRIVING AND FIRING RANGE, 2 ATHLETIC TRACKS, 2 BASEBALL DIAMONDS, 2 BASKETBALL COURTS, AND 4 TENNIS COURTS. VEHICLES INCLUDE 16 CANVAS-COVERED TANKS, 12 CANVAS-COVERED TANKS/SP GUNS, FORTY-ONE 8-WHEELED APC (BTR-60P, 33 CANVAS-COVERED), 147 CARGO TRUCKS, 32 VAN TRUCKS, 30 UTILITY TRUCKS, 29 UNIDENTIFIED VEHICLES, 10 UNIDENTIFIED CANVAS-COVERED VEHICLES, 6 FLATBED TRAILERS, 16 LOWBOY TRAILERS, ONE ROTARY TRENCH DIGGER, 2 GRADERS, AND 5 TRUCK-MOUNTED TREADWAY BRIDGES. APPROXIMATELY 310 OTHER VEHICLES LOCATED WEST OF THE TANK DRIVING AND FIRING RANGE APPEAR TO BE UNSERVICEABLE. DEFENSES INCLUDE 6 OCCUPIED 3-GUN AAA SITES AT UTM 17Q LR 675395, 677395, 680408, 682409, 692396, 693397, AND ONE UNOCCUPIED 3-GUN AAA SITE AT 676393. (AMS SERIES E723, SHEET 3784-IV, 4TH ED).

25X1D

NAZARENO, MILITARY AREA 2258N 08214W

FACILITIES INCLUDE 4 BARRACKS AND 7 OTHER BUILDINGS (ONE UNDER CONSTRUCTION). TWENTY TANKS/SP GUNS AND AT LEAST 8 OTHER VEHICLES OBSERVED. CLOUD SHADOW LIMITS FURTHER INTERPRETATION.

25X1A

25X1D

GUANABACOA MILITARY AREA 2307N 08215W

EAST AREA -- 6 BARRACKS, 13 OTHER BUILDINGS, ONE VEHICLE SHED, 20 TRACKED PRIME MOVERS, 17 CARGO TRUCKS, 15 UNIDENTIFIED VEHICLES, 7 FA PIECES, AND 3 PROBABLE FA PIECES. WEST AREA -- 14 BARRACKS, 5 OTHER BUILDINGS, 58

SECRET

SECRET

NPIC/R-1571/63

CARGO TRUCKS AND 5 POSSIBLE FA PIECES.  
SCATTERED CLOUDS LIMIT INTERPRETATION.

25X1D

MESTANZA, EXPLOSIVES STORAGE SITE 2228N 08347W

TWO ADJOINING EXPLOSIVE STORAGE BUNKERS  
ENCLOSED BY A SECURITY FENCE. TWO SMALL SHEDS ARE  
LOCATED ON SERVICE ROAD OUTSIDE OF SECURED AREA.

25X1A

25X1D

HAVANA MILITARY CAMP CALABAZAR 2301N 08217W

AREA 1 -- 3 LARGE STORAGE-TYPE BUILDINGS, 6  
BARRACKS-TYPE, AND 15 OTHER BUILDINGS, 10 TANKS/SP  
GUNS, 38 CARGO TRUCKS, AND AN OCCUPIED 6-GUN AAA SITE.

AREA 2 -- PARTIALLY SECURED AREA CONTAINS 4 BARRACKS  
AND APPROXIMATELY 20 MISCELLANEOUS BUILDINGS,  
APPROXIMATELY 55 CARGO TRUCKS, 2 POL TRUCKS,  
APPROXIMATELY 10 UTILITY TRUCKS, APPROXIMATELY 35  
UNIDENTIFIED VEHICLES, 2 SMALL UTILITY TRAILERS,  
AND 7 FA PIECES.

AREA 3 -- 13 BARRACKS (2 UNDER CONSTRUCTION), AT  
LEAST 20 OTHER BUILDINGS, 9 CANVAS-COVERED PROBABLE  
T-34/85 TANKS, AT LEAST 10 PROBABLE T-54 TANKS, 19  
OTHER TANKS (5 CANVAS-COVERED), ONE CANVAS-COVERED  
BTR-50P, AND 9 PROBABLE CARGO TRUCKS.

AREA 4 -- PARTIALLY FENCED AREA CONTAINS 4 BARRACKS,  
ONE LARGE STORAGE BUILDING, ONE T-SHAPED BUILDING  
(PROBABLE MESS HALL), 4 SMALLER BUILDINGS, ONE  
LARGE AND ONE MEDIUM TENT (NEITHER OF A KNOWN SOVIET  
TYPE), ONE CANVAS-COVERED VEHICLE PARKING AREA, 9  
CARGO TRUCKS, 2 UTILITY TRUCKS, AND 2 FA PIECES.

AREA 5 -- 3 LARGE STORAGE BUILDINGS, 4 BARRACKS, 6  
OTHER BUILDINGS, ONE LARGE (NOT OF A KNOWN SOVIET  
TYPE), AND ONE SMALL TENT, 29 CARGO TRUCKS, ONE  
UNIDENTIFIED VEHICLE, AND 4 FA PIECES.

AREA 6 -- 14 BUILDINGS, 14 CARGO TRUCKS, AND 7 UTILITY  
TRUCKS. THE 6-GUN AAA SITE IS UNOCCUPIED.

(SEE ATTACHMENT 5)

25X1D

SECRET



SECRET

NPIC/R-1571/63

25X1A

HOLGUIN MILITARY CAMP SOUTHWEST 2051N 07617W

LOCATED 2.4 NM SW OF HOLGUIN.  
AREA ABANDONED.  
NO EQUIPMENT OR ACTIVITY OBSERVED.

25X1D

SAN JOSE DE LAS LAJAS STORAGE 2257N 08211W

AT LEAST 11 EARTH-MOUNDED STORAGE BUILDINGS AND ONE  
LARGE AND ONE MEDIUM TENT (NEITHER OF A KNOWN SOVIET  
TYPE).  
NO VEHICLES OR EQUIPMENT OBSERVED.  
SCATTERED CLOUDS AND CLOUD SHADOW LIMIT  
INTERPRETATION.

25X1D

LA JUTIA AREA, MILITARY INSTALLATION 2155N 08016W

FIVE PAIR OF REVETTED STORAGE BUILDINGS, ONE  
ADMINISTRATIVE BUILDING, 4 SUPPORT BUILDINGS, AND 12  
SMALL MISCELLANEOUS BUILDINGS, ONE CARGO TRUCK, AND  
ONE UNIDENTIFIED VEHICLE OBSERVED.  
A PROBABLE SMALL-ARMS FIRING RANGE IS LOCATED AT UTM  
17Q NQ 760236.  
NUMEROUS SMALL TRENCHES ARE LOCATED THROUGHOUT AREA.  
(AMS SERIES E723, SHEET 4181-IV, 1ST ED).

25X1D

MINAS AREA, MILITARY CAMP 2306N 08211W

FIVE BARRACKS, 13 OTHER BUILDINGS, 2 LARGE AND 2  
MEDIUM TENTS (NONE OF A KNOWN SOVIET TYPE), 157 CARGO  
TRUCKS, AND 36 FA PIECES OBSERVED.

25X1D

CANTEL MILITARY CAMP 2302N 08119W

FOUR LARGE BARRACKS, 9 SUPPORT-TYPE BUILDINGS, 4  
MISCELLANEOUS BUILDINGS, 12 CANVAS-COVERED TANKS/SP  
GUNS, AND 2 CARGO TRUCKS OBSERVED IN CLOUD-FREE AREAS.

SECRET

25X1D



25X1A

HAVANA VEHICLE PARK 2309N 08215W

FIVE BUILDINGS AND 23 CARGO TRUCKS OBSERVED.  
IMMEDIATELY TO THE WEST IS AN AREA CONTAINING 93  
BUILDINGS (ONE UNDER CONSTRUCTION), 125 CARGO TRUCKS  
AND 17 PROBABLE SEDANS.

25X1D



LOMAS TETAS DE MANAGUA, TANK PARK 2258N 08219W

APPROXIMATELY 30 TANKS/SP GUNS AND 10 VEHICLES OR  
PIECES OF EQUIPMENT OBSERVED.  
CLOUD SHADOW LIMITS FURTHER INTERPRETATION.

25X1D



GUANAJAY MILITARY CAMP MARTIN MESA 2257N 08243W

TWO LARGE WAREHOUSE-TYPE BUILDINGS, 16 BARRACKS-TYPE  
BUILDINGS, 3 TWO-BAY UNCOVERED PROBABLE STORAGE  
BUILDINGS WITH BLAST WALLS, ONE PROBABLE  
AMMUNITION STORAGE BUILDING, ONE LARGE SHED,  
APPROXIMATELY 22 SUPPORT BUILDINGS, 5 LARGE (NONE OF A  
KNOWN SOVIET TYPE) AND 2 SMALL TENTS, 11 TANKS, AT  
LEAST 135 CARGO TRUCKS, AND 26 FA PIECES OBSERVED.

25X1D



25X1A

ALTAGRACIA, MILITARY AREA 2124N 07742W

FIVE BUILDINGS, ONE LARGE TENT (NOT OF A KNOWN  
SOVIET TYPE), 9 TANKS/SP GUNS, ONE UTILITY TRUCK, AND  
ONE PROBABLE VAN TRUCK OBSERVED.

25X1D



25X1A

GUANABANA, MILITARY AREA 2258N 08132W

NORTH AREA --- FACILITIES INCLUDE 3 LARGE BARRACKS-TYPE  
BUILDINGS, ONE LARGE STORAGE BUILDING, 2 LARGE

SECRET

NPIC/R-1571/63

SUPPORT-TYPE BUILDINGS, AND ONE LARGE TENT (NOT OF A KNOWN SOVIET TYPE). TEN CARGO TRUCKS, 5 PROBABLE FA PIECES, AND 13 UNIDENTIFIED VEHICLES OR PIECES OF EQUIPMENT OBSERVED.

SOUTH AREA -- FACILITIES INCLUDE ONE LARGE STORAGE BUILDING, 4 SUPPORT BUILDINGS, 2 MISCELLANEOUS BUILDINGS, 2 LARGE TENTS (NONE OF A KNOWN SOVIET TYPE), AND ONE WATER TANK. SEVENTEEN CARGO TRUCKS, 11 POSSIBLE FA PIECES, AND 2 UNIDENTIFIED VEHICLES OR PIECES OF EQUIPMENT OBSERVED.

25X1D



25X1A

GUANABANA AREA, MILITARY CAMP 2258N 08134W



FACILITIES INCLUDE ONE LARGE BARRACKS OR STORAGE BUILDING, ONE SMALL SUPPORT BUILDING, ONE SHED OR TENT AND A TANK DRIVING RANGE. FOUR TANKS, 5 SP GUNS, AND ONE VEHICLE OR PIECE OF EQUIPMENT OBSERVED.

25X1D



25X1A

GUAYABAL MILITARY CAMP 2254N 08237W



MAIN CAMP -- .9 NM ESE OF GUAYABAL (UTM 17Q LR 333343). CLEARED FIELD CONTAINS ONE MAINTENANCE OR ADMINISTRATIVE BUILDING, ONE SMALL THATCHED-ROOF BUILDING AND ONE PROBABLE SMALL BUILDING IN WOODED AREA JUST WEST OF FIELD. ONE FARM BUILDING, 2 LARGE, AND ONE SMALL SHED JUST EAST OF THE FIELD MAY BE SUPPORT BUILDINGS. PARKING HARDSTAND IN FIELD CONTAINS 18 AT-S TRACKED PRIME MOVERS, 9 CARGO TRUCKS, 4 PROBABLE CARGO TRUCKS, 18 FA PIECES, AND 4 AAA PIECES.

AREA 1 -- 1.5 NM SE OF GUAYABAL (UTM 17Q LR 360340). ONE ADMINISTRATIVE BUILDING, 4 BARRACKS, 5 SUPPORT BUILDINGS, AND A VEHICLE PARKING AREA WITH 29 CARGO TRUCKS, AT LEAST 16 FA PIECES, ONE AAA PIECE, AND 3 PROBABLE AAA PIECES.

AREA 2 -- ONE NM EAST OF GUAYABAL (UTM 17Q LR 358354) ADJACENT TO AND IN AN ORCHARD. AREA CONSISTS OF ONE LARGE PROBABLE FRUIT PROCESSING BUILDING AND 7 SMALL SHED-TYPE BUILDINGS. AT LEAST 13 CARGO TRUCKS, 5 FA PIECES, AND 4 AAA PIECES OBSERVED.

SECRET

AREA 3 --- .7 NM NW OF GUAYABAL (UTM 17Q LR 332368).  
A WOODED AREA CONTAINING 3 PROBABLE BARRACKS,  
2 ADMINISTRATIVE OR SUPPORT BUILDINGS, AND A VEHICLE  
PARKING AREA WITH AT LEAST 18 UNIDENTIFIED VEHICLES.  
FOLIAGE AND SHADOWS LIMIT INTERPRETATION.  
(AMS SERIES E723, SHEET 3684-1, 3RD ED).

25X1D



25X1A



SANTA CLARA AREA, ARTILLERY TRAINING AREA 2224N 08000W

AREA 1 --- 3 BUILDINGS, ONE MEDIUM TENT (NOT OF A  
KNOWN SOVIET TYPE) AND 2 FA PIECES.  
AREA 2 --- 4 DWELLINGS, 7 CARGO TRUCKS, AND AN OCCUPIED  
6-GUN AAA SITE.  
AREA 3 --- AT LEAST 11 BUILDINGS, 2 CARGO TRUCKS, 3  
OTHER VEHICLES, AND 7 POSSIBLE FA PIECES.  
AREA 4 --- 3 BARRACKS-TYPE BUILDINGS, 4 OTHER  
BUILDINGS, AND 18 CARGO TRUCKS.  
AREA 5 --- CLOUD-COVERED.

25X1D



25X1A



TACAJO MILITARY CAMP 2051N 07558W

AREA 1 --- 19 CARGO TRUCKS, ONE POL TRUCK, ONE  
PROBABLE POL TRUCK, ONE UTILITY TRUCK, ONE ROAD  
GRADER, 7 PROBABLE CARGO TRAILERS, AND 2 UNIDENTIFIED  
VEHICLES OBSERVED IN CLOUD-FREE AREAS.  
AREA 2 --- NO VEHICLES OR MILITARY EQUIPMENT OBSERVED.  
AREA 3 --- NO VEHICLES OR MILITARY EQUIPMENT OBSERVED.  
AREA 4 --- 7 BUILDINGS OBSERVED IN CLOUD-FREE AREAS.  
THE TWO 3-GUN AAA SITES ARE UNOCCUPIED.  
AREA 5 --- ONE MEDIUM TENT (NOT OF A KNOWN SOVIET TYPE)  
OBSERVED IN CLOUD-FREE AREAS.  
AREA 6 --- 4 CARGO TRUCKS AND ONE UTILITY TRUCK.  
AREA 7 --- ONE CARGO TRUCK OBSERVED IN CLOUD-FREE  
AREAS.  
AREA 8 --- 22 UNIDENTIFIED VEHICLES OR PIECES OF  
EQUIPMENT.

25X1D



SECRET

NPIC/R-1571/63

25X1A

CABANA FORTRESS 2308N 08220W

WALLED FORT CONTAINING 3 LARGE PROBABLE BARRACKS, 2 ADMINISTRATIVE, AND SEVERAL SMALL BUILDINGS. NO EQUIPMENT OBSERVED.

25X1D

JAGUA, MILITARY AREA 2205N 08029W

FACILITIES INCLUDE 4 BARRACKS, ONE ADMINISTRATIVE BUILDING, 3 STORAGE BUILDINGS, 3 SUPPORT BUILDINGS, ONE BUILDING UNDER CONSTRUCTION, AND ONE LARGE TENT (NOT OF A KNOWN SOVIET TYPE). TWO VAN TRUCKS, 16 CARGO TRUCKS, 2 CARGO TRAILERS, ONE TRACTOR, 4 CANVAS-COVERED VEHICLES OR PIECES OF EQUIPMENT, 18 FA PIECES, AND AT LEAST 15 PERSONNEL OBSERVED IN AREA.

25X1D

LA VEGUITA MILITARY CAMP 2049N 07615W

CAMP CONTAINS FIVE BARRACKS BUILDINGS AND 3 SUPPORT BUILDINGS. TEN CARGO TRUCKS AND 12 FA PIECES OBSERVED.

25X1D

CAMAGUEY MILITARY INSTALLATION SW 2117N 07801W

SEVEN BARRACKS-TYPE BUILDINGS, 6 SUPPORT BUILDINGS, 2 MEDIUM TENTS (NONE OF A KNOWN SOVIET TYPE), 20 CARGO TRUCKS (10 IN CONVOY FORMATION), AND 3 UTILITY TRUCKS OBSERVED IN CLOUD-FREE AREAS.

25X1D

SANTA CLARA, AAA DEFENSES 2225N 07957W

LOCATED 3.1 NM WNW OF SANTA CLARA AT 22-25-02N 080-01-04W, UTM 17Q PQ 011792.

SECRET

SECRET

NPIC/R-1571/63

AN OCCUPIED 6-GUN PROBABLE 57MM AAA SITE. AT LEAST 4 OF THE 6 REVETMENTS CONTAIN WATER AND ALL AAA PIECES ARE ADJACENT TO THE REVETMENTS. CABLE SCARS FROM EACH REVETMENT TO THE JUNCTION BOX ARE EVIDENT. FIRE CAN RADAR, A PROBABLE PUAZO-6 FIRE DIRECTOR, A GENERATOR, AND 2 CARGO TRUCKS ALSO OBSERVED. ENTIRE AREA IS SECURED BY A SINGLE FENCE AND 5 GUARD TOWERS. THREE BARRACKS BUILDINGS, 7 SMALLER BUILDINGS/STRUCTURES AND ONE LARGE TENT (NOT OF A KNOWN SOVIET TYPE) OBSERVED. (AMS SERIES E723, SHEET 4183-II, 2D ED). (SEE ATTACHMENT 6)

25X1D

CEIBA MOCHA, MILITARY AREA 2257N 08142W

LOCATED 1.8 NM SOUTHEAST OF CEIBA MOCHA. ONE LARGE AND ONE SMALL T-SHAPED BUILDING, 2 SMALL L-SHAPED BUILDINGS, 17 LARGE STORAGE BUILDINGS, ONE POSSIBLE MAINTENANCE BUILDING, 20 MISCELLANEOUS SMALLER BUILDINGS, AND 21 CARGO TRUCKS OBSERVED. THE 6-GUN AAA SITE REMAINS OCCUPIED, WITH ONE LARGE (NOT OF A KNOWN SOVIET TYPE) AND ONE SMALL TENT LOCATED NEAR THE SITE.

25X1D

EL CALVARIO, MUNITIONS STORAGE 2303N 08220W

AT LEAST 6 EARTH-COVERED STORAGE BUILDINGS AND APPROXIMATELY 7 SMALL BUILDINGS OBSERVED. NO EQUIPMENT OR ACTIVITY OBSERVED.

25X1D

PLAYA VISTA DEL MAR, MILITARY AREA 2301N 08249W

LOCATED 3 NM WEST OF MARIEL. THREE TANKS AND 2 OTHER VEHICLES OBSERVED ON ROAD IN PLAYA VISTA DEL MAR AT 17Q LR 134469. (AMS SERIES E723, SHEET 3685-III, 1ST ED).

25X1D

SECRET

SECRET

NPIC/R-1571/63

CAMAGUEY AREA, VEHICLE PARK 2123N 07757W

LOCATED 1.5 NM W OF CAMAGUEY.  
FIVE WAREHOUSE-TYPE BUILDINGS (3 ARCHED-ROOF); ONE  
VEHICLE PARK WITH PROBABLE ADMINISTRATIVE BUILDING,  
30 CARGO TRUCKS, 10 UNIDENTIFIED VEHICLES,  
APPROXIMATELY 180 FARM TRACTORS, AND SEVERAL STACKS  
OF UNIDENTIFIED MATERIAL OR EQUIPMENT OBSERVED.  
THIS AREA DOES NOT APPEAR TO BE MILITARY IN NATURE.  
UTM 18Q SU 941683.  
(AMS SERIES E723, SHEET 4680-III, 2D ED).

25X1D

LOMA DE TIERRA MILITARY INSTALLATION 2302N 08214W

LOCATED 1.1 NM NNE OF LOMA DE TIERRA.  
INSTALLATION CONTAINS THREE LARGE STORAGE BUILDINGS,  
9 BARRACKS, AND 6 OTHER BUILDINGS.  
61 CARGO TRUCKS AND 4 FA PIECES OBSERVED.

25X1D

MARIEL, NAVAL ACADEMY 2259N 08244W

LOCATED AT EASTERN EDGE OF MARIEL.  
FACILITIES INCLUDE ONE MULTISTORIED AND ONE SINGLE  
STORY ADMINISTRATIVE BUILDING, 2 SINGLE STORY  
BARRACKS, ONE POSSIBLE DINING HALL, 2 POSSIBLE  
CLASSROOM BUILDINGS, 2 SMALL SUPPORT BUILDINGS, 2  
PROBABLE VEHICLE SHEDS, A SMALL ARMS RANGE,  
BASKETBALL COURT, BASEBALL FIELD, TENNIS COURT, AND  
SWIMMING POOL.  
ONE CARGO TRUCK, 3 PROBABLE CARGO TRUCKS, AND 4 VAN  
TRUCKS OBSERVED.

25X1D

MATANZAS MILITARY HEADQUARTERS 2302N 08131W

LOCATED 3.1 NM ESE OF MATANZAS.  
ROAD-SERVED, SECURED INSTALLATION CONTAINS ONE LARGE  
MULTISTORY BUILDING WITH 5 WINGS, 4 PROBABLE  
ADMINISTRATIVE BUILDINGS, 3 STORAGE-TYPE BUILDINGS,  
7 OTHER BUILDINGS, 3 CARGO TRUCKS, 2 VAN TRUCKS,  
7 UTILITY TRUCKS, AND 12 OTHER VEHICLES.

SECRET

SECRET

NPIC/R-1571/63

25X1D

[REDACTED]  
HAVANA, VEHICLE/EQUIPMENT STORAGE AREA 2307N 08221W

LOCATED JUST S OF HAVANA HARBOR, ADJACENT TO RR YARDS.  
OPEN STORAGE AREA CONTAINS 119 CARGO TRUCKS,  
22 BUSES, 16 POL TRAILERS, AND 5 LOWBOY TRAILERS.

25X1D

[REDACTED]  
MACAGUA, MILITARY CAMP 2050N 07610W

LOCATED 5.2 NM SE OF HOLGUIN.  
CAMP CONTAINS THREE BARRACKS, ONE ADMINISTRATION  
BUILDING, 4 BUILDINGS WITHOUT ROOFS, AND 3 LARGE TENTS  
(NONE OF A KNOWN SOVIET TYPE).  
18 CARGO TRUCKS AND 18 FA/AAA PIECES OBSERVED. AN  
UNOCCUPIED 3-GUN AAA SITE OBSERVED AT UTM 18Q UU  
779059.  
(AMS SERIES E723 SHEET 4978-I, 1ST ED).

25X1D

[REDACTED]  
PUNTA BRAVA AREA, VEHICLE PARK 2301N 08229W

LOCATED 1.1 NM NE OF PUNTA BRAVA AT 23-01-43N  
082-29-05W AT UTM 17Q LR 478474.  
FENCED AREA CONTAINS 2 BUILDINGS ASSOCIATED WITH A  
SWIMMING POOL, 5 BARRACKS AND 2 SUPPORT BUILDINGS, A  
POSSIBLE MOTOR POOL AREA WITH ONE LARGE AND ONE SMALL  
SHED-TYPE BUILDING, AND 2 LARGE STORAGE-TYPE BUILDINGS  
LOCATED IN THE SOUTHERN SECTOR OF THE AREA. TWENTY-  
EIGHT CARGO TRUCKS (27 OF WHICH ARE PARKED IN OPEN  
FIELD), AND ONE UNIDENTIFIED VEHICLE OBSERVED.  
(AMS SERIES E723, SHEET 3685-II, 2D ED).

25X1D

[REDACTED]  
SAN ANTONIO DE LOS BANOS AREA, VEHICLE CON. 2254N 08228W

LOCATED 2.1 NM NE OF SAN ANTONIO DE LOS BANOS (IN AN  
ORCHARD).  
ONE SMALL BUILDING FOUNDATION, ONE SMALL,

SECRET



SECRET

NPIC/R-1571/63

PARTIALLY-COMPLETED BUILDING, 22 CARGO TRUCKS, AND 3 UNIDENTIFIED VEHICLES OBSERVED AT UTM 17Q LR 488338. TWO LARGE, 2 SMALL BUILDINGS, AND ONE LARGE SHED LOCATED AT NORTH EDGE OF ORCHARD ARE PROBABLY ASSOCIATED WITH AREA.  
(AMS SERIES E723, SHEET 3784-IV, 4TH ED).

25X1D

SAN ANTONIO DE LOS BANOS, MILITARY DEFENSES 2254N 08229W

MILITARY INSTALLATION ADJACENT TO AND IN A WOODED AREA LOCATED .9 NM NE OF SAN ANTONIO DE LOS BANOS AT 22-54-05N 082-29-41W AT UTM 17Q LR 467333. FACILITIES INCLUDE 2 LARGE SUPPORT BUILDINGS, 4 BARRACKS, ONE PROBABLE MAINTENANCE BUILDING AND AT LEAST 8 SMALL SUPPORT OR MAINTENANCE BUILDINGS. TWENTY-EIGHT CARGO TRUCKS, 13 UNIDENTIFIED VEHICLES, AND 3 POSSIBLE AAA PIECES OBSERVED. THE ACCESS ROAD HAS A SECURITY GATE.  
(AMS SERIES E723, SHEET 3784-IV, 4TH ED).

25X1D

HAVANA, VEHICLE/EQUIPMENT PARK 2303N 08227W

LOCATED AT THE SW EDGE OF MARIANAO.  
AREA 1 (UTM 17Q LR 507517) -- ONE LARGE, AND 9 SMALLER BUILDINGS, 21 CARGO TRUCKS, 11 VAN TRUCKS, 5 PROBABLE CARGO TRAILERS, AND 2 UNIDENTIFIED VEHICLES.  
AREA 2 (UTM 17Q LR 507514) -- A FENCED AREA WITH 2 ADMINISTRATIVE BUILDINGS, 3 BARRACKS, 2 CARGO TRUCKS, AND 3 UNIDENTIFIED VEHICLES. JUST NORTH OF AND OUTSIDE OF FENCE IS A LARGE MAINTENANCE/STORAGE TENT AND A VEHICLE PARKING AREA WITH 35 UNIDENTIFIED VEHICLES.  
AREA 3 (UTM 17Q LR 509508) -- ONE LARGE MULTIWING, MULTISTORY BUILDING, 4 BARRACKS, ONE PROBABLE MAINTENANCE BUILDING WITH 5 LARGE AND 8 SMALLER BAYS, AND ONE SMALL BUILDING, AT LEAST 48 CARGO TRUCKS, ONE UTILITY TRUCK, AND 20 UNIDENTIFIED VEHICLES. TWO BASEBALL DIAMONDS ARE IN AREA. FOLIAGE AND SHADOWS LIMIT INTERPRETATION.  
AREA 4 (UTM 17Q LR 508504) -- WOODED AREA CONTAINS ONE LARGE MULTIWING AND 2 SMALLER BUILDINGS, AT LEAST 28 CARGO TRUCKS, AND AT LEAST 90 UNIDENTIFIED VEHICLES. FOLIAGE AND SHADOWS LIMIT INTERPRETATION.

SECRET

SECRET

NPIC/R-1571/63

(AMS SERIES E723, SHEET 3785-III, 4TH ED).

25X1D

CAIMITO MILITARY INSTALLATION 2257N 08236W

LOCATED .6 NM WEST OF CAIMITO AND 4.5 NM ENE OF GUANAJAY. PROBABLE FENCED AREA CONTAINS 3 BARRACKS, ONE MAINTENANCE BUILDING, 3 SMALL PROBABLE WAREHOUSES, AND 10 SMALL MISCELLANEOUS BUILDINGS. AN OPEN-AIR THEATER WITH A SMALL STAGE, AND A PROJECTION BUILDING IS ASSOCIATED WITH THE BARRACKS AREA. EIGHT CARGO TRUCKS, ONE VAN TRUCK, ONE TANK TRUCK, ONE PROBABLE CARGO TRAILER, 6 FA PIECES, AND 2 AAA PIECES ARE SCATTERED THROUGHOUT THE AREA. UTM 17Q LR 349388. (AMS SERIES E723, SHEET 3684-I, 3D ED).

25X1D

GUANAJAY AREA, PROBABLE MILITARY SCHOOL 2251N 08238W

LOCATED 5 NM SE OF GUANAJAY. PROBABLE FENCED AREA CONTAINS THE FOLLOWING BUILDINGS -- ONE IRREGULAR-SHAPED MULTI-WING, ONE E-SHAPED MULTISTORY, 7 LARGE U-SHAPED MULTISTORY, 2 LARGE U-SHAPED SINGLE STORY, ONE LARGE MULTISTORY WITH 2 SMALL MULTISTORY INTERCONNECTED BUILDINGS, ONE L-SHAPED MULTISTORY, ONE I-SHAPED MULTISTORY, 2 LARGE MULTISTORY, ONE SMALL U-SHAPED SINGLE STORY, 4 SMALL MISCELLANEOUS BUILDINGS, AND 6 LARGE AND 3 SMALL FRAME STRUCTURES. OTHER FACILITIES INCLUDE A WATER TOWER AND PARKING AREA WITH 2 UNIDENTIFIED VEHICLES (UTM 17Q LR 321290), A PARKING AREA WITH AT LEAST 25 UNIDENTIFIED VEHICLES (UTM 17Q LR 317287), A PARKING AREA WITH APPROXIMATELY 25 UNIDENTIFIED VEHICLES (UTM 17Q LR 317285), A MOTOR POOL WITH 6 LARGE TENTS (NONE OF A KNOWN SOVIET TYPE), AND APPROXIMATELY 40 CARGO TRUCKS (UTM 17Q LR 315283). TWO SWIMMING POOLS, AN ATHLETIC TRACK, AND 3 BASEBALL DIAMONDS ARE SCATTERED THROUGHOUT THE AREA. (AMS SERIES E-723, SHEET 3684-I, 3D ED).

40  
SECRET

SECRET

NPIC/R-1571/63

25X1D

EL CHICO, MILITARY AREAS 2300N 08226W

LOCATED AT EL CHICO AND 3.1 NM ESE OF PUNTA BRAVA AT  
23-00-33N 082-26-36W.  
AREA 1 (UTM 17Q LR 524455) -- 8 LARGE BUILDINGS,  
NUMEROUS SMALL BUILDINGS, AND AT LEAST 2 LARGE TENTS.  
AREA 2 (UTM 17Q LR 519456) -- MOTOR PARK CONTAINING 15  
CARGO TRUCKS, 7 UTILITY TRUCKS, AND APPROXIMATELY 15  
UNIDENTIFIED VEHICLES OR PIECES OF EQUIPMENT.  
AREA 3 (UTM 17Q LR 523451) -- EQUIPMENT PARK LOCATED  
IN HEAVILY WOODED AREA CONTAINS APPROXIMATELY 50  
PROBABLE AAA PIECES AND AN OCCUPIED 6-GUN AAA SITE.  
AREA 4 (UTM 17Q LR 527448) -- MOTOR PARK CONTAINS  
APPROXIMATELY 40 CARGO TRUCKS.  
(AMS SERIES E723, SHEET 3785-III, 4TH ED).

25X1D

RANCHO BOYEROS PROB MIL INSTALLATION 2259N 08222W

LOCATED ONE NM ESE OF RANCHO BOYEROS AT  
UTM 17Q LR 595432.  
CAMP CONTAINS 2 LARGE BUILDINGS, 4 SMALLER BUILDINGS,  
42 PROBABLE STORAGE BUILDINGS, ONE SHED, 25 LARGE  
TENTS (NONE OF A KNOWN SOVIET TYPE), ONE CARGO TRUCK,  
ONE PROBABLE BUS AND ONE UNIDENTIFIED VEHICLE.  
(AMS SERIES E723, SHEET 3784-IV, 4TH ED).

25X1D

SANTIAGO DE LAS VEGAS, MILITARY CAMP 2257N 08223W

FOUR BARRACKS-TYPE BUILDINGS, 2 BUILDING FOUNDATIONS,  
ONE LARGE ADMINISTRATIVE/SUPPORT BUILDING AND A  
SECURED VEHICLE PARKING AREA CONTAINING 29 CARGO  
TRUCKS OBSERVED.

25X1D

HAVANA ARMY HQ CAMPO LIBERTAD 2305N 08225W

TEN T-SHAPED BARRACKS, 5 OPEN-COURT BARRACKS, 2  
ADMINISTRATIVE BUILDINGS, 10 WAREHOUSES, AND

SECRET

SECRET

NPIC/R-1571/63

APPROXIMATELY 100 BUSES OBSERVED IN CLOUD-FREE AREAS.

25X1D



HAVANA, NAVAL ENLISTED TRAINING CENTER 2309N 08221W

THIRTY-ONE SINGLE STORY BARRACKS, 12 T-SHAPED BARRACKS, AT LEAST 11 ADMINISTRATIVE/SUPPORT BUILDINGS, 85 CARGO TRUCKS, AND 10 OTHER VEHICLES OR PIECES OF EQUIPMENT OBSERVED IN CLOUD-FREE AREAS.

25X1D



CAMAGUEY AREA, MILITARY INSTALLATION 2123N 07756W

ONE MULTI-STORIED L-SHAPED BUILDING, 5 TWO-STORIED BUILDINGS, ONE MICROWAVE TOWER WITH ONE ASSOCIATED BUILDING, ONE PROBABLE GYMNASIUM, ONE BUILDING UNDER CONSTRUCTION, 19 OTHER BUILDINGS, 25 BUSES, 5 CARGO TRUCKS, AND 3 UNIDENTIFIED VEHICLES OBSERVED. THE AREA IS SECURED, BUT DOES NOT APPEAR TO BE MILITARY IN NATURE. UTM 18Q SU 950683. (AMS SERIES E723, SHEET 4680-III, 2D ED).

25X1D



ZARAGOZA AREA MILITARY CAMP 2256N 08204W

SEVEN BUILDINGS AND 6 CARGO TRUCKS OBSERVED. CLOUD SHADOW LIMITS INTERPRETATION.

25X1D



-MISCELLANEOUS ACTIVITY-

25X1A



25X1D

SAN FRANCISCO DE PAULA, MUNITIONS STGE SITE 2303N 08218W

25X1D

NINE EARTH-MOUNDED STORAGE BUILDINGS, AND AT LEAST NINE

25X1D

OTHER BUILDINGS OBSERVED. SCATTERED CLOUDS AND CLOUD SHADOW LIMIT INTERPRETATION.

25X1D

25X1D

SECRET

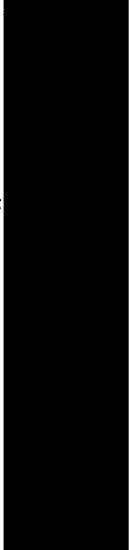
25X1D



25X1A

BEJUCAL MUNITIONS STORAGE SITES NE AND NW 2256N 08223W

SITE NW --- IDENTIFICATION ONLY.  
SITE NE --- CLOUD COVERED.  
HEADQUARTERS AREA --- 3 PROBABLE ADMINISTRATIVE BUILDINGS, 3 LARGE SHED-TYPE BUILDINGS, 2 BARRACKS-TYPE BUILDINGS, 3 OTHER BUILDINGS, 5 LARGE (2 NOT OF A KNOWN SOVIET TYPE) AND 3 MEDIUM TENTS (2 NOT OF A KNOWN SOVIET TYPE), AND A VEHICLE PARKING AREA CONTAINING 41 CARGO TRUCKS, 5 UTILITY TRUCKS, 3 PROBABLE POL TRUCKS, 3 UNIDENTIFIED VEHICLES AND 2 CARGO TRAILERS OBSERVED IN CLOUD-FREE AREAS.



25X1D



SANTA CLARA MILITARY INSTALLATION CUBANACAN 2224N 07953W

FACILITIES INCLUDE ONE LARGE T-SHAPED BUILDING WITH 3 ADJACENT BUILDINGS, 3 SMALLER BUILDINGS, AND 2 LARGE TENTS (NONE OF A KNOWN SOVIET TYPE). FOUR VAN TRUCKS, 7 FA PIECES AND 3 UNIDENTIFIED PIECES OF EQUIPMENT OBSERVED IN AREA.  
NUMEROUS TRENCHES, FOXHOLES, AND AW POSITIONS SCATTERED GENERALLY SOUTH OF THE INSTALLATION.  
THE STORAGE AREA LOCATED NORTH OF THE INSTALLATION IS CLOUD-COVERED.

25X1D

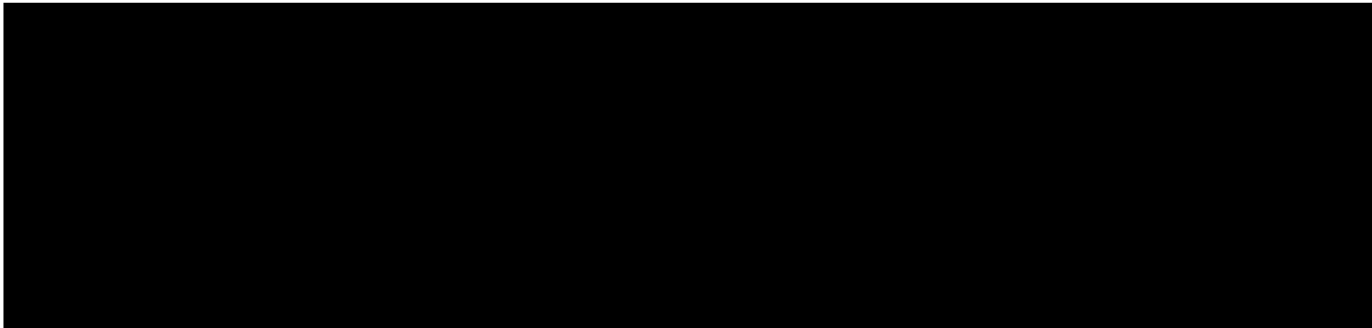


25X1D



SECRET

NPIC/R-1571/63



25X1D

BEJUCAL, STORAGE AREA 2255N 08221W

LOCATED 2.2 NM ESE OF BEJUCAL AT UTM 17Q LR 614349. TWO EARTH-MOUNDED BUILDINGS WITH DOUBLE ENTRANCES AND CORRUGATED ROOFS APPEAR COMPLETE, 3 BUILDINGS UNDER CONSTRUCTION, EXCAVATIONS FOR 2 ADDITIONAL BUILDINGS, 5 CARGO TRUCKS, AND 2 UNIDENTIFIED VEHICLES OBSERVED (AMS SERIES E723, SHEET 3784-IV, 4TH ED).

25X1D



HOLGUIN STORAGE SITE 2058N 07617W

LOCATED 5 NM N OF HOLGUIN. SECURED STORAGE SITE CONTAINS THREE REVETTED BUILDINGS, AND A GUARD HOUSE AT ENTRANCE. ONE UNIDENTIFIED VEHICLE OBSERVED.

25X1D



HOLGUIN AREA, STORAGE SITE 2052N 07618W

LOCATED 1.5 NM WSW OF HOLGUIN. ROAD-SERVED SECURED AREA CONTAINS 6 LARGE STORAGE OR MAINTENANCE BUILDINGS (4 OF WHICH ARE SEPARATELY SECURED WITHIN THE AREA), AND ONE PROBABLE POL SHED. FIVE 8-WHEELED APC, ONE PROBABLE 8-WHEELED APC, 18 CARGO TRUCKS, 2 TANK TRUCKS, ONE UTILITY TRUCK, 2 ROAD GRADERS, 2 UNIDENTIFIED VEHICLES, ONE FLATBED TRAILER, AND 2 CARGO TRAILERS OBSERVED. ALSO ASSOCIATED WITH THE SECURED AREA ARE 2 ADDITIONAL STORAGE OR MAINTENANCE BUILDINGS AND ONE MEDIUM TENT. THREE CARGO TRUCKS, 2 TANK TRUCKS, AND ONE UNIDENTIFIED VEHICLE OBSERVED.

SECRET

SECRET

NPIC/R-1571/63

25X1D

MANAGUA AREA, EXPLOSIVES STORAGE 2256N 08220W

LOCATED 3 NM SW OF MANAGUA.  
FENCED AREA CONTAINS 21 REVETTED EXPLOSIVES-STORAGE  
BUILDINGS, 22 OTHER BUILDINGS, AND 11 HEXAGONAL  
PROBABLE GUARD STRUCTURES SITUATED INSIDE THE  
PERIMETER OF THE FENCE.  
ONE CARGO TRUCK AND ONE OTHER VEHICLE OBSERVED.

25X1D

CAMAGUEY POL STORAGE WEST 2123N 07757W

LOCATED 2 NM W OF CAMAGUEY AT UTM 18Q SU 935681.  
A RAIL- AND ROAD-SERVED STORAGE AREA CONTAINS NINE  
BUILDINGS, 2 LARGE, 3 MEDIUM AND 2 SMALL POL STORAGE  
TANKS.  
TWENTY-FOUR RAILROAD TANK CARS, 6 TRACTOR-TRAILER POL  
TRUCKS, AND ONE CARGO TRUCK OBSERVED.  
(AMS SERIES E723, SHEET 4680-III, 2D ED).

25X1D

CIENFUEGOS, POL STORAGE (SINCLAIR) 2208N 08027W

LOCATED WEST SIDE OF CIENFUEGOS AT UTM 17Q NQ 554489.  
THREE LARGE, ONE MEDIUM, AND ONE SMALL REVETTED  
STORAGE TANK, 2 LARGE STORAGE BUILDINGS, ONE  
ADMINISTRATIVE BUILDING, 5 SMALL ASSOCIATED  
BUILDINGS, 2 POL TANK TRUCKS, AND 8 RAILROAD TANK  
CARS OBSERVED.  
ASSOCIATED WITH STORAGE AREA IS A PIPELINE PIER,  
APPROXIMATELY 785 X 15 FT.  
THE AREA IS ROAD- AND RAIL-SERVED.  
(AMS SERIES E723, SHEET 4182-III, 2D ED).

25X1D

SECRET

CIENFUEGOS, POL STORAGE (TEXACO) 2209N 08028W

LOCATED ON W EDGE OF CIENFUEGOS AT UTM 17Q NQ 550486. RAIL- AND ROAD-SERVED STORAGE AREA CONTAINS ONE LARGE STORAGE TANK, 8 HORIZONTAL TANKS, ONE FUEL TRUCK-LOADING BUILDING, AND 2 SUPPORT BUILDINGS. (AMS SERIES E723, SHEET 4182-III, 2ND ED).

25X1D



CIENFUEGOS POL STORAGE (STANDARD OIL) 2208N 08028W

LOCATED ON THE SOUTHERN END OF PUNTA MAJAGUA. RAIL- AND ROAD-SERVED AREA CONTAINS 2 LARGE STORAGE TANKS, 2 SMALL STORAGE TANKS, 2 SINGLE STORY ARCH-ROOFED BUILDINGS, ONE SINGLE STORY FLAT-ROOFED BUILDING AND ONE SMALL SUPPORT BUILDING. AT LEAST 14 TANK CARS OBSERVED. UTM 17Q NQ 553478. (AMS SERIES E723, SHEET 4182-III, 2ND ED).

25X1D



HAVANA, POL STORAGE REGLA SOUTH 2307N 08220W

TWELVE POL STORAGE TANKS, 4 STORAGE-TYPE BUILDINGS, AND 8 OTHER BUILDINGS, APPROXIMATELY 80 TANK TRAILERS, AND APPROXIMATELY 40 TANK TRUCKS OBSERVED.

25X1D



HAVANA PETROLEUM REFINERY AND STORAGE REGLA 2308N 08220W

TWO DISTILLATION UNITS WITH AT LEAST 3 THERMAL CRACKING UNITS, 134 POL STORAGE TANKS, 2 RAILYARDS (7-TRACK AND 3-TRACK), 2 PIERS, AND ONE WHARF OBSERVED.

25X1D



HAVANA PETROLEUM STORAGE REGLA WEST 2307N 08220W

ELEVEN POL STORAGE TANKS, ONE LARGE STORAGE BUILDING, ONE PROBABLE PUMP HOUSE, AND SEVERAL SMALL



SECRET

NPIC/R-1571/63

BUILDINGS OBSERVED.

25X1D

[REDACTED]

CAMAGUEY THERMAL POWER PLANT 2122N 07754W

LOCATED IN THE CENTER OF CAMAGUEY AT UTM 18Q SU 984672.  
SECURED PLANT IS ROAD-SERVED AND CONTAINS 2 BOILER HOUSES AND 2 GENERATOR HOUSES WITH 5 VENTS, ONE POL STORAGE TANK, ONE WATER TANK, 4 SPRAY PONDS, ONE COOLING TOWER, AND A TRANSFORMER YARD.  
(AMS SERIES E723, SHEET 4680-III, 2ND ED.)

25X1D

[REDACTED]

CIENFUEGOS, THERMAL POWER PLANT 2210N 08027W

LOCATED .5 NM NORTH OF CIENFUEGOS AT UTM 17Q NQ 563503.  
THE MAIN POWER BUILDING CONTAINS ONE MULTISTORY GENERATOR HALL AND BOILER HOUSE. ADDITIONAL FACILITIES INCLUDE A WATER INTAKE SYSTEM, 2 POL TANKS, TRANSFORMER YARD WITH ONE CONTROL BUILDING, ONE PUMP HOUSE, ONE PROBABLE MAINTENANCE BUILDING, AND 2 SINGLE STORY ASSOCIATED BUILDINGS.  
(AMS SERIES E723, SHEET 4182-III, 2ND ED.)

25X1D

[REDACTED]

HAVANA, RINCON DE MELONES POWER PLANT 2307N 08221W

PLANT CONTAINS BOILERHOUSE, GENERATOR HALL, TRANSFORMER YARD, AND 3 POL TANKS.

25X1D

[REDACTED]

HAVANA, TALLAPIEDRA POWER PLANT 2307N 08221W

ONE MAIN BUILDING WITH ONE GENERATOR HALL, ONE BOILER HOUSE, AND 6 POL STORAGE TANKS OBSERVED.

25X1D

[REDACTED]

SECRET

SECRET

NPIC/R-1571/63

PINAR DEL RIO POWER PLANT 2225N 08342W

RAIL-SERVED PLANT CONTAINS A GENERATOR HALL, ONE LARGE POL STORAGE TANK, A TRANSFORMER YARD, A SPRAY POND, AND 2 BUILDINGS.

25X1D

CAMAGUEY RR YARDS & SHOPS 2123N 07755W

CLASSIFICATION YARD WITH 24 TRACKS IS 3,550 X 880 FT, CONTAINS RECEIVING, SORTING, AND FORWARDING FACILITIES WITH AN ENGINE REPAIR YARD, 2 CAR-REPAIR YARDS, AND A FREIGHT TRANSHIPMENT DEPOT.

FACILITIES INCLUDE A ROUNDHOUSE (APPROXIMATELY 28 BAYS) WITH TURNTABLE, 3 LARGE, AND 4 SMALL CAR-REPAIR BUILDINGS, 2 TRANSFER TABLES, 8 SMALL MISCELLANEOUS BUILDINGS, 2 POL PUMP HOUSES, 4 TRANSHIPMENT WAREHOUSES, ONE SMALL PASSENGER TERMINAL, 2 POL STORAGE TANKS, 3 WATER TANKS, 2 OPEN STORAGE AREAS, AND A STOCKYARD WITH 9 PENS AND A LOADING RAMP. ROLLING STOCK INCLUDES APPROXIMATELY 458 FREIGHT CARS, 69 FLATCARS, 68 TANKCARS, 26 PASSENGER CARS, 123 GONDOLAS, AND 48 DIESEL ENGINES.

25X1D

CAMAGUEY RAILROAD YARD NORTHEAST 2123N 07754W

LOCATED 1.2 NM NE OF CAMAGUEY RAILROAD YARDS AND SHOPS AT 21-23-18N 077-54-55W.

THE YARD IS 2,150 X 200 FT AND 7 TRACKS WIDE. FACILITIES CONSIST OF 4 WAREHOUSES, ONE PASSENGER TERMINAL, A TURNING WYE, AND TEAM TRACKS RUNNING THE LENGTH OF YARD. AT LEAST 41 CARGO TRUCKS AND AT LEAST 125 PIECES OF ROLLING STOCK OBSERVED.

(UTM 18Q SU 678977)

(AMS SERIES E723, 4680-III, 2ND ED).

25X1D

HAVANA, RAILROAD YARDS & SHOPS 2308N 08221W

APPROXIMATELY 40 TRACKS, A PASSENGER STATION, 3 TRANS-SHIPMENT SHEDS, ONE TURNTABLE, AT LEAST 75 BOXCARS, AT LEAST 12 FLATCARS, AND AT LEAST 12

PASSENGER CARS OBSERVED IN CLOUD-FREE AREAS.

25X1D



MATANZAS RR YARDS & SHOPS 2303N 08134W

YARD IS 1,365 X 1,150 FT AND CONTAINS AT LEAST 29 TRACKS. FOUR PROBABLE LOCOMOTIVES, ONE PROBABLE SWITCH ENGINE AND 177 UNITS OF ROLLING STOCK OBSERVED AT MAIN RAIL YARD. NO ROLLING STOCK OBSERVED AT HERSHEY YARD.

25X1D



SANTA CLARA RR YARDS & SHOPS 2224N 07957W

FACILITIES CONSIST OF A 10-STALL ROUNDHOUSE WITH TURNTABLE, 2 CLASSIFICATION YARDS, A RECEIVING AND PASSENGER YARD, A PASSENGER STATION, NUMEROUS WAREHOUSES, 2 LARGE WATER TANKS, A PROBABLE POL STORAGE AREA WITH 4 TANKS AND APPROXIMATELY 40 POL TRUCKS. ROLLING STOCK TOTALS APPROXIMATELY 380 PIECES.

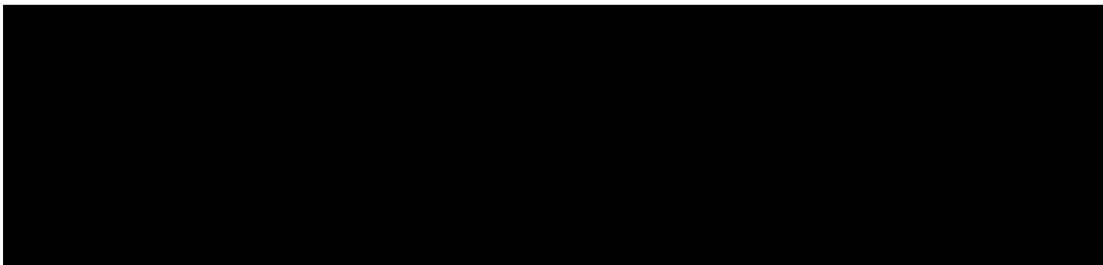
25X1D



BAUTA AREA, ARIGUANABO TEXTILE PLANT 2256N 08233W

LOCATED 2.8 NM SOUTH OF BAUTA AT 22-56-13N 082-33-07W (UTM 17Q LR 409373). PLANT CONTAINS 5 LARGE CONNECTED PROCESSING BUILDINGS, 2 SMALLER ASSOCIATED BUILDINGS, 2 LARGE WAREHOUSES, POWER PLANT AND 3 SMALL STORAGE BUILDINGS, ONE WATER TOWER, 3 VERTICAL AND 2 HORIZONTAL STORAGE TANKS. ROAD SERVED. (AMS SERIES E723, SHEET 3684-I, 3RD ED).

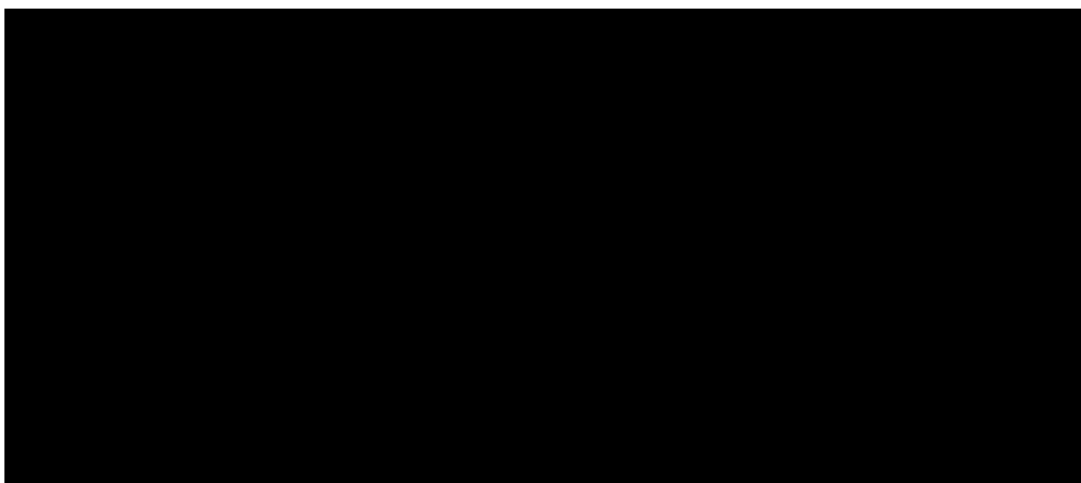
25X1D



SECRET

NPIC/R-1571/63

25X1D



HAVANA, ANTILLANA DE ACERO STEEL PLANT 2302N 08216W

LOCATED 5 NM SE OF HAVANA AT 23-02-10N 082-16-18W  
AT UTM 17Q LR 696480.  
ROAD- AND RAIL-SERVED PLANT.  
FACILITIES INCLUDE A FURNACE BUILDING WITH 3 STACKS  
(ONE EMITTING SMOKE), A BLOOMING MILL, APPROXIMATELY  
20 MISCELLANEOUS BUILDINGS, AT LEAST 5 ADDITIONAL  
BUILDINGS UNDER CONSTRUCTION, A WATER TOWER, AND A  
SPRAY POND. NUMEROUS STACKS OF MATERIAL OBSERVED  
IN OPEN STORAGE.  
(AMS SERIES E723, SHEET 3785-III, 4TH ED).

25X1D



HAVANA, GAS WORKS 2307N 08221W

FACILITY CONTAINS SIX BUILDINGS, 2 LARGE AND  
2 MEDIUM-SIZED WET GASOMETERS, 2 LARGE POSSIBLE POL  
TANKS, AND A COAL YARD.

25X1D



SAN JOSE DE LAS LAJAS, COPPER FABRICATION PL 2256N 08208W

A SECURED ROAD- AND RAIL-SERVED AREA AT  
UTM 17Q LR 838372 CONTAINS ONE MAIN FABRICATION  
BUILDING, AT LEAST 5 OTHER BUILDINGS, 2 HORIZONTAL  
STORAGE TANKS, 2 VERTICAL STORAGE TANKS, 8 CARGO  
TRUCKS, AND ONE DOZER. A CONSTRUCTION AREA IS  
LOCATED SOUTH OF MAIN BUILDING.  
(AMS SERIES E723, SHEET 3784-I, 34 ED).

50

SECRET

SECRET

NPIC/R-1571/63

25X1D

MARIEL MORRO CEMENT PLANT 2301N 08245W

LOCATED 1.3 NM NORTH OF MARIEL.  
PLANT CONSISTS OF A LARGE PROCESSING BUILDING WITH  
4 STACKS, 2 SUPPORT BUILDINGS, ONE POWER PLANT WITH  
A SMALL POL STORAGE TANK, 2 LARGE AND 2 SMALL STORAGE  
TANKS, ONE CHEMICAL STORAGE TANK, A LARGE  
WATER RESERVOIR, 8 STORAGE SILOS, 2 SLURRY TANKS, ONE  
HEAD FRAME, 2 QUAYS (ONE WITH POL PIPELINE), A LARGE  
QUARRY, AND AN INTERNAL RAIL SYSTEM WITH 2 SMALL  
ENGINES AND 31 ORE CARS.

25X1D

MATANZAS, CHEMICAL PLANT 2304N 08132W

PLANT AT UTM 17Q MR 442507 CONTAINS 3 LARGE  
PROCESSING BUILDINGS CONNECTED BY A PROBABLE  
CONVEYER SYSTEM, 3 PROBABLE ADMINISTRATIVE BUILDINGS,  
2 LARGE STORAGE BUILDINGS, ONE HEATING BUILDING, 17  
ASSOCIATED BUILDINGS, 2 LARGE SPHERICAL STORAGE  
TANKS, 10 LARGE STORAGE TANKS, 27 SMALLER STORAGE  
TANKS, 2 WATER COOLING BUILDINGS, ONE POSSIBLE WATER  
COOLING BUILDING, AND 3 VEHICLES. HAZE PRECLUDES  
FURTHER INTERPRETATION.  
(AMS SERIES E723, SHEET 3885-II, 3D ED).

25X1D

MATANZAS, TEXTILE MILL 2304N 08133W

LOCATED 2 NM NE OF MATANZAS AT UTM 17Q MR 432507.  
MILL CONTAINS ONE LARGE PROBABLE MILL BUILDING, 23  
SMALLER ASSOCIATED BUILDINGS, 2 WATER COOLING  
BUILDINGS, ONE LARGE, ONE MEDIUM, AND 2 SMALL  
VERTICAL STORAGE TANKS, 4 HORIZONTAL STORAGE TANKS,  
ONE WATER TANK, AND NUMEROUS PIECES OF MATERIAL  
IN OPEN STORAGE. A PROBABLE HOUSING AREA LOCATED JUST  
EAST OF TEXTILE MILL CONTAINS 8 LIVING QUARTERS, ONE  
ADMINISTRATIVE BUILDING, AND ONE SMALL ASSOCIATED  
BUILDING.  
A 6-GUN AAA SITE IS LOCATED AT 17Q MR 438511.  
SCATTERED CLOUDS PRECLUDE FURTHER INTERPRETATION.

SECRET

SECRET

NPIC/R-1571/63

(AMS SERIES E723, SHEET 3885-II, 3D ED).

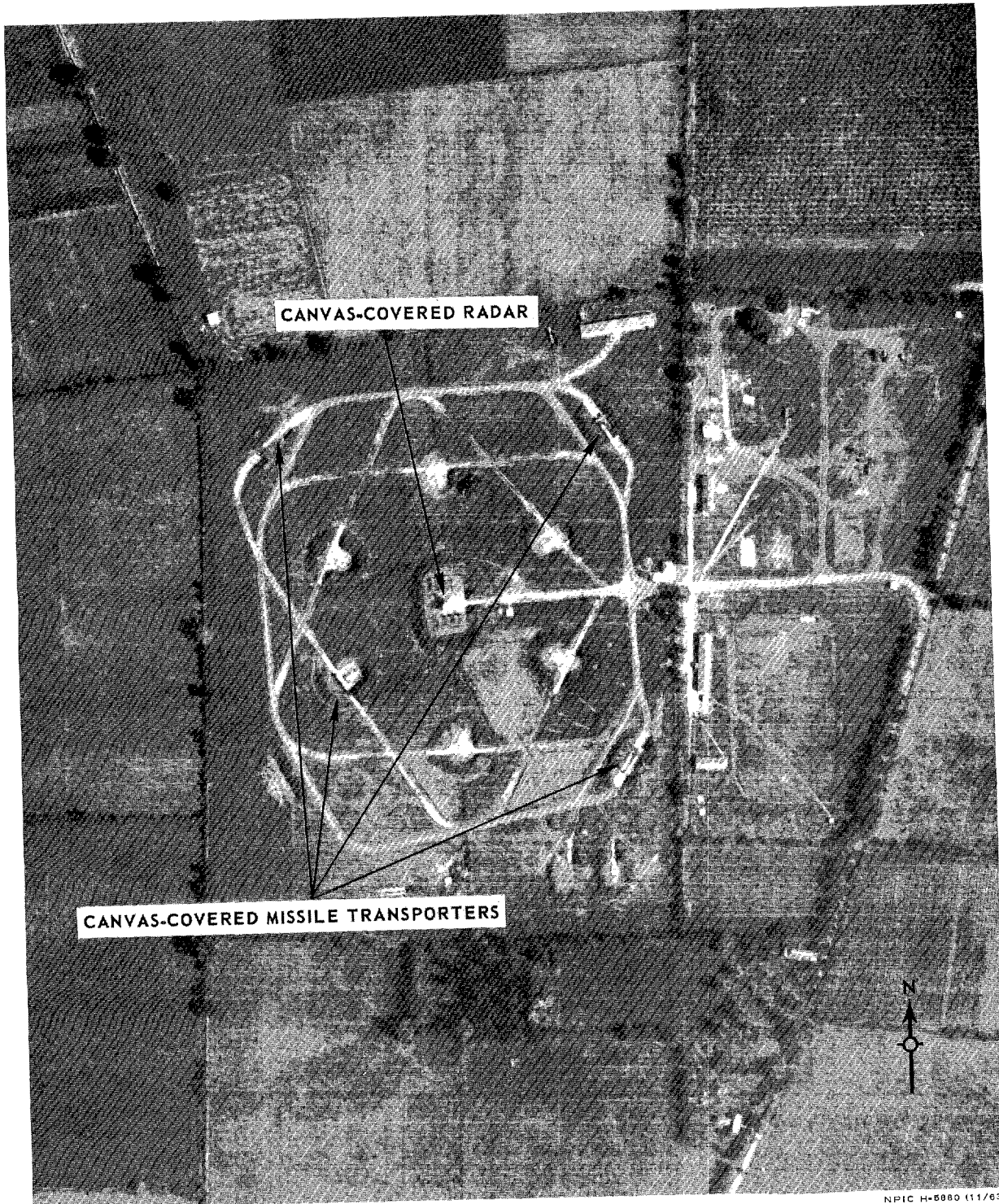
25X1D



52  
SECRET

SECRET

NPIC/R-1571/63  
ATTACHMENT 1

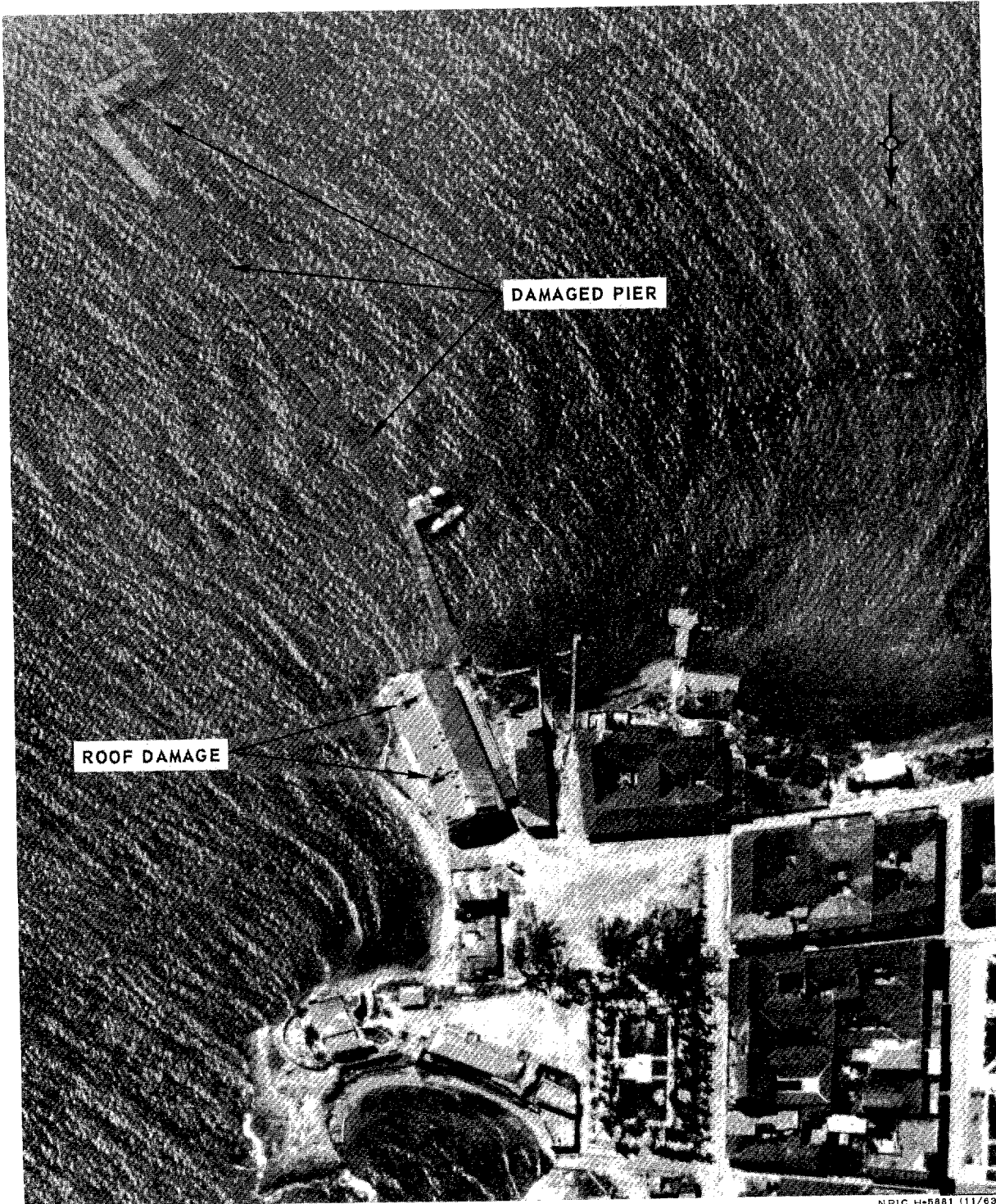


MANAGUA SAM SITE.

SECRET

SECRET

NPIC/R-1571/63  
ATTACHMENT 2



GIBARA PORT FACILITIES.

NPIC H-6881 (11/63)

SECRET





HOLGUIN MILITARY CAMP (MOTOR PARK).

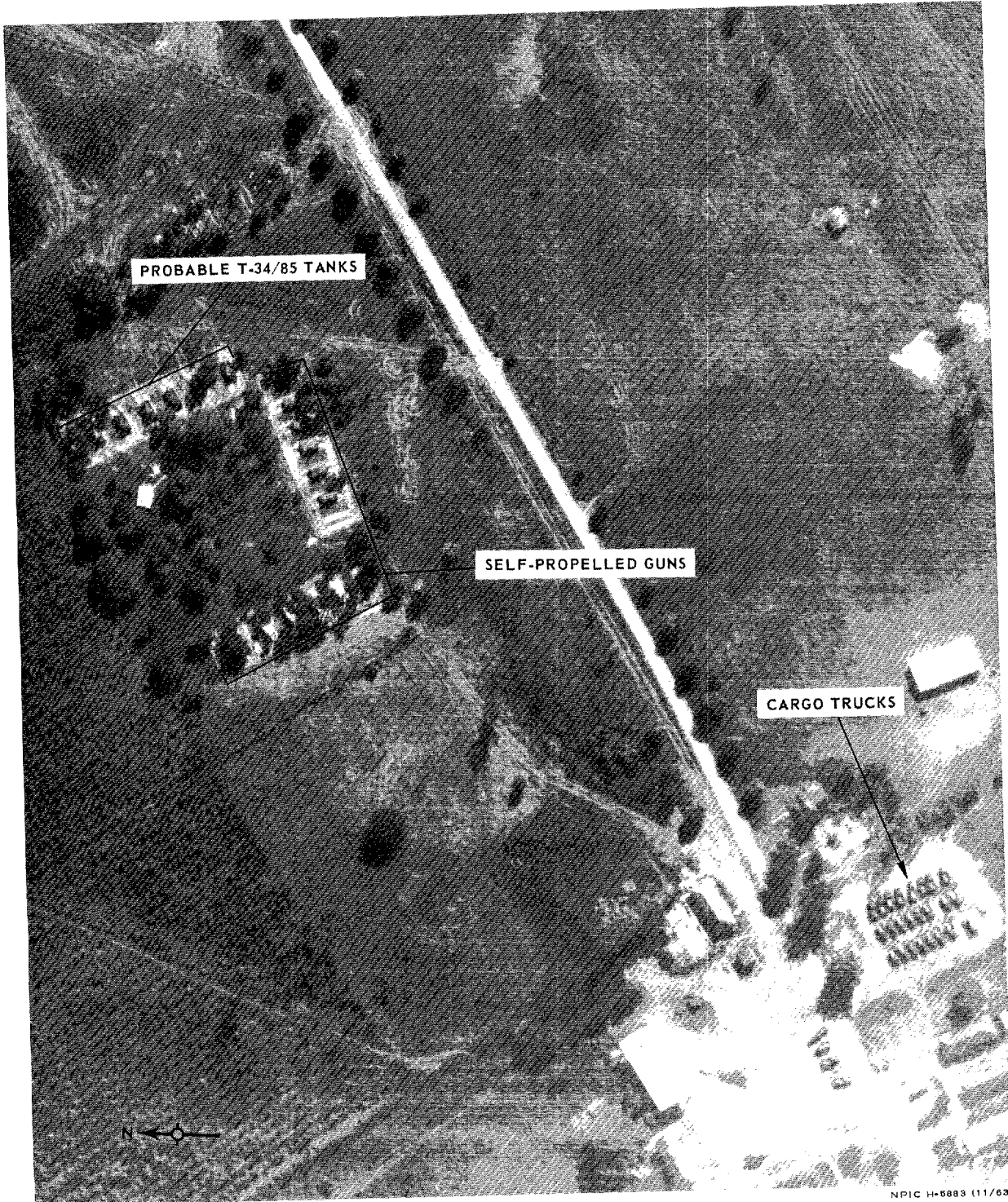
SECRET

SECRET

NPIC/R-1571/63  
ATTACHMENT 3

SECRET

NPIC/R-1571/63  
ATTACHMENT 4

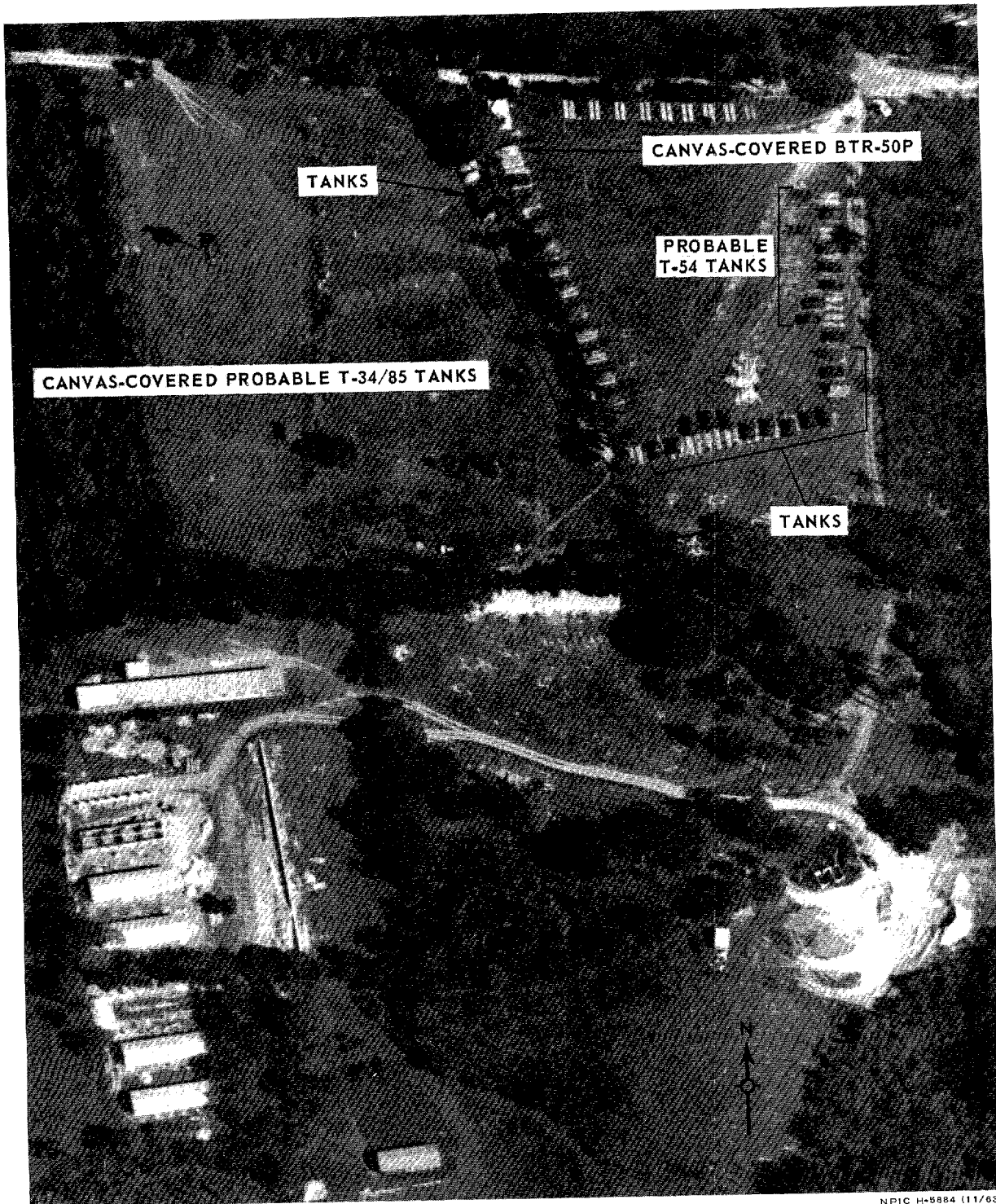


TORRENS MILITARY COMPLEX (AREA 6).

SECRET

SECRET

NPIC/R-1571/63  
ATTACHMENT 5



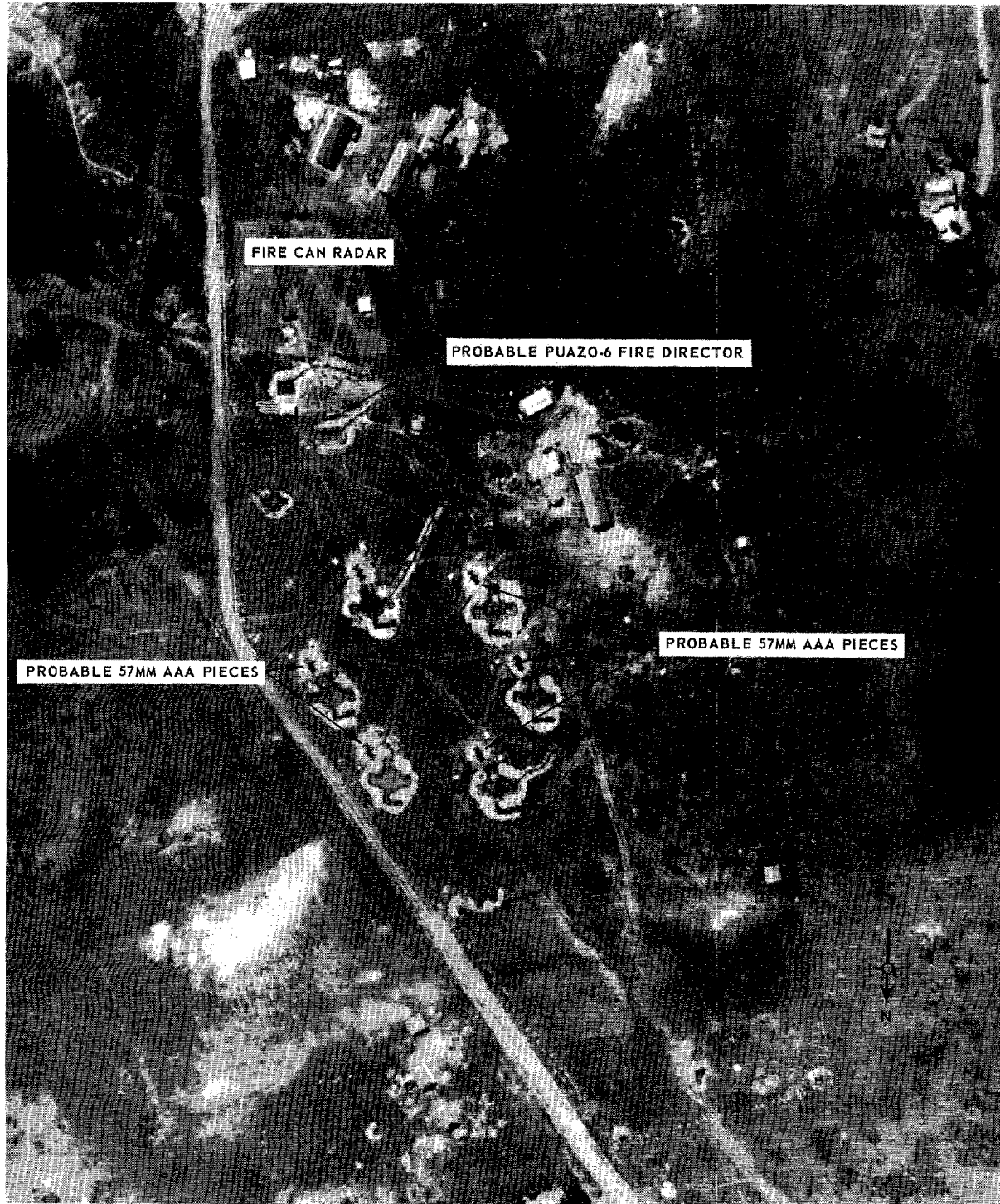
NPIC H-5884 (11/63)

HAVANA MILITARY CAMP CALABAZAR (AREA 3).

SECRET

SECRET

NPIC/R-1571/63  
ATTACHMENT 6



SANTA CLARA, AAA DEFENSES.

NPIC H-5885 (11/63)

SECRET

Approved For Release 2000/08/04 : CIA-RDP78B04560A001800010047-8

SECRET

Approved For Release 2000/08/04 : CIA-RDP78B04560A001800010047-8

SECRET