

SECRET

NPIC/R-1620/63

December 1963

PHOTOGRAPHIC INTERPRETATION REPORT

IPIR

MISSION 3802

28 DECEMBER 1963



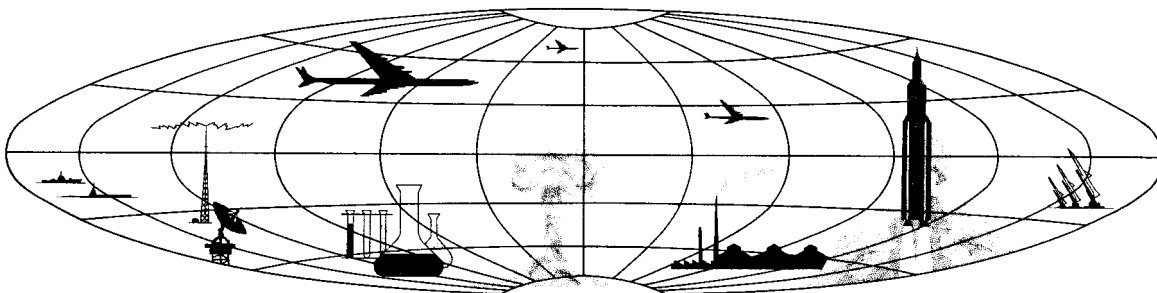
CIA



DIA

25X1A

NATIONAL PHOTOGRAPHIC INTERPRETATION CENTER



SECRET



WARNING

This document contains information affecting the national defense of the United States, within the meaning of Title 18, sections 793 and 794, of the U.S. Code, as amended. Its transmission or revelation of its contents to or receipt by an unauthorized person is prohibited by law.

~~SECRET~~

NPIC/R-1620/63

PREFACE

THE FOLLOWING INFORMATION REPRESENTS A PRELIMINARY ANALYSIS OF AERIAL PHOTOGRAPHY FROM [REDACTED] 25X1A MISSION 3802, DATED 28 DEC 1963. THE NUMBER APPEARING AT THE END OF THE HEADER LINE IS THE COMOR TARGET NUMBER.

SYMBOLS USED TO INDICATE CONDITIONS WHICH AFFECT THE APPEARANCE OF THE TARGET ON THE PHOTOGRAPHY ARE AS FOLLOWS -- C (CLEAR), SC (SCATTERED CLOUDS), HC (HEAVY CLOUDS), H (HAZE), CS (CLOUD SHADOW), SD (SEMIDARKNESS), O (OBLIQUITY), PQ (POOR IMAGE QUALITY).

FOR ITEMS OF SPECIAL INTEREST SEE --
ATTACHMENT 1 -- JOSE MARTI INTERNATIONAL AIRFIELD [REDACTED] 25X1A
ATTACHMENTS 2-4 -- HAVANA AREA, MILITARY ACTIVITY

~~SECRET~~

~~SECRET~~

January 1964

[REDACTED]

NATIONAL PHOTOGRAPHIC INTERPRETATION CENTER

ERRATUM FOR NPIC/R-1620/63

25X1A

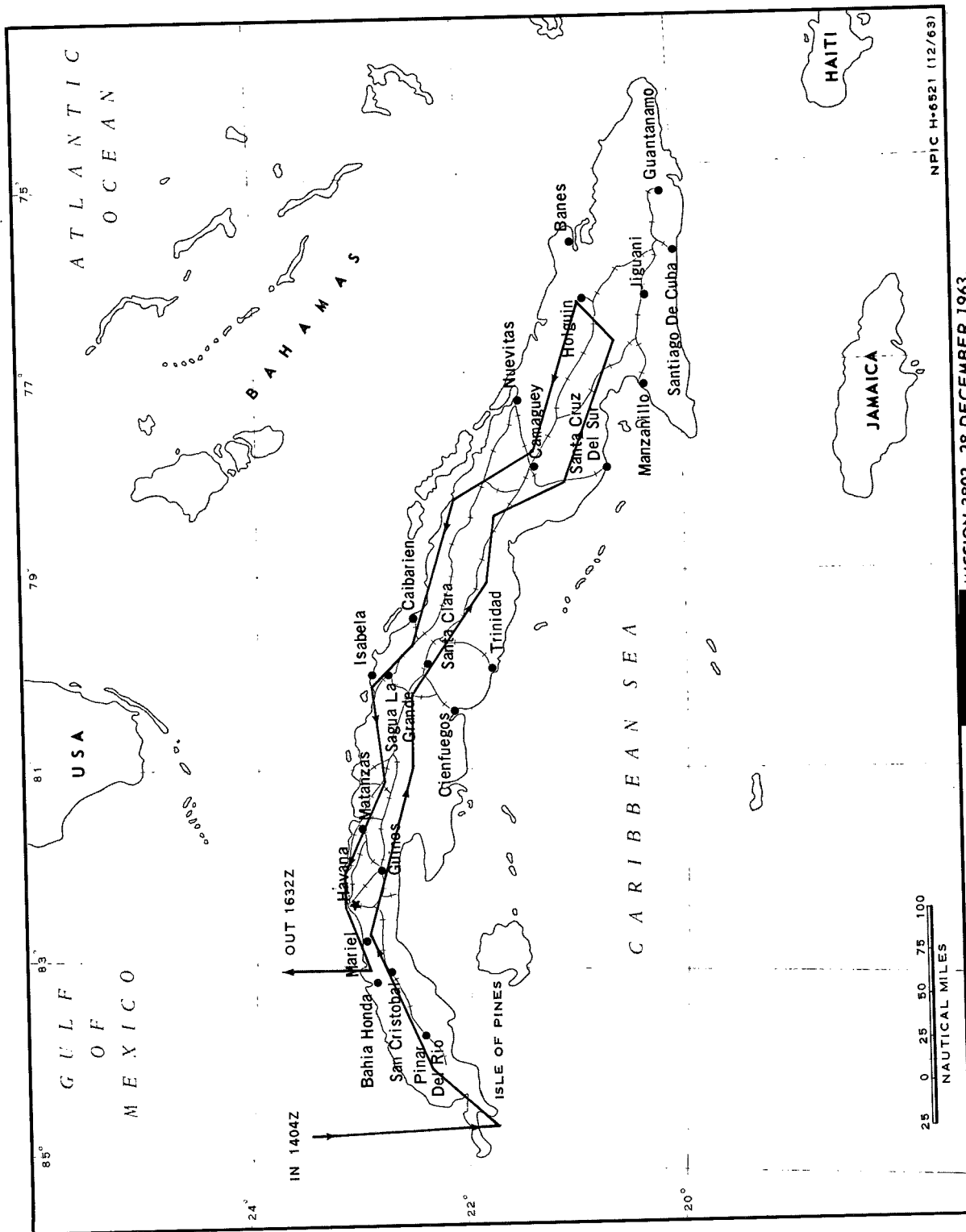
In the IPIR on [REDACTED] MISSION 3802, 28 December 1963,
change the report on Mariel Naval Base and Naval Air Station (page 11) to
read:

ONE S.O.1 CLASS SC (instead of ONE KRONSTADT-CLASS PC).

~~SECRET~~

SECRET

NPIC/R-1620/63



25X1A

SECRET

~~SECRET~~

NPIC/R-1620/63

-MISSILES-

25X1A

SAN CRISTOBAL MRBM SITE 1 2240N 08317W

SITE ABANDONED.
NO ACTIVITY OBSERVED.

25X1D

SAN CRISTOBAL MRBM SITE 3 2242N 08308W

SITE ABANDONED.
NO ACTIVITY OBSERVED.

25X1D

GUANAJAY IRBM SITE 1 2257N 08239W

NO MILITARY ACTIVITY OR EQUIPMENT OBSERVED.

25X1D

SAGUA LA GRANDE MRBM SITE 1 2244N 08002W

SITE ABANDONED.
NO ACTIVITY OBSERVED.

25X1D

~~SECRET~~

~~SECRET~~

NPIC/R-1620/63

25X1A

SAGUA LA GRANDE MRBM SITE 2 2239N 07951W

SITE ABANDONED.
NO ACTIVITY OBSERVED IN CLOUD-FREE AREAS.

25X1D

SAN CRISTOBAL MRBM SITE 4 2246N 08258W

SITE ABANDONED.
NO ACTIVITY OBSERVED.

25X1D

GUANAJAY IRBM SITE 2 2257N 08237W

NO MILITARY ACTIVITY OR EQUIPMENT OBSERVED.

25X1D

TAPASTE AREA STORAGE SITES 2302N 08207W

NO APPARENT CHANGE IN FACILITIES.
NO VEHICLES OBSERVED.

25X1D

SANTA LUCIA SAM SITE 2241N 08355W

SITE ABANDONED.

25X1D

SAN JULIAN AIRFIELD SAM SITE 2205N 08408W

SITE 1 -- 6 REVETTED CANVAS-COVERED LAUNCHERS, 7
CANVAS-COVERED MISSILE TRANSPORTERS, 5 UNIDENTIFIED
VEHICLES (2 CANVAS-COVERED), AND AN OCCUPIED GUIDANCE
REVETMENT WITH CANVAS-COVERED EQUIPMENT.
NO APPARENT CHANGE IN PERMANENT FACILITIES. ONE
LARGE, ONE MEDIUM, AND ONE SMALL TENT.
SITE 2 -- ABANDONED.

25X1D

~~SECRET~~

~~SECRET~~

NPIC/R-1620/63

25X1A

MARIEL SAM SITE 2300N 08249W

SIX REVETTED LAUNCHERS (5 CANVAS-COVERED), 6 CANVAS-COVERED MISSILE TRANSPORTERS, A CANVAS-COVERED PARKING AREA, AND AN OCCUPIED NET-COVERED GUIDANCE REVETMENT OBSERVED. FACILITIES INCLUDE 9 LARGE (7 NON-SOVIET), 2 MEDIUM, AND 2 SMALL TENTS.

25X1D

MATANZAS SAM SITE 2301N 08129W

SIX UNRETTED LAUNCHERS (2 WITH MISSILES, 2 CANVAS-COVERED), 5 PROBABLE MISSILE TRANSPORTERS, 3 CANVAS-COVERED MISSILE TRANSPORTERS, 3 CANVAS-COVERED TRACKED PRIME MOVERS, 13 POSSIBLE CANVAS-COVERED TRACKED PRIME MOVERS, 4 PROBABLE VAN TRAILERS, ONE CARGO TRUCK, AND AN OCCUPIED GUIDANCE AREA OBSERVED. FACILITIES INCLUDE 8 BARRACKS, 2 OTHER BUILDINGS, 2 LARGE, 3 MEDIUM, AND 3 SMALL TENTS, AND 2 SMALL CANVAS-COVERED PROBABLE ELECTRONICS AREAS.

25X1D

25X1A

SAGUA LA GRANDE SAM SITE 2251N 08005W

SIX REVETTED CANVAS-COVERED LAUNCHERS, 2 PROBABLE CANVAS-COVERED MISSILE TRANSPORTERS, ONE CANVAS-COVERED PARKING AREA, ONE TRUCK-MOUNTED CRANE, 2 PROBABLE VAN TRAILERS, ONE VAN TRUCK, ONE CARGO TRUCK, 2 UNIDENTIFIED VEHICLES, 4 CANVAS-COVERED VEHICLES OR PIECES OF EQUIPMENT, AND AN OCCUPIED GUIDANCE AREA OBSERVED. FACILITIES INCLUDE ONE STORAGE BUILDING, 3 SHEDS, 5 LARGE (4 NON-SOVIET) TENTS, AND A SOCCER FIELD.

25X1D

CAIBARIEN SAM SITE 2228N 07929W

SIX UNRETTED LAUNCHERS (AT LEAST ONE WITH MISSILE, 2 CANVAS-COVERED), ONE CANVAS-COVERED HOLD AREA, ONE CANVAS-COVERED PARKING AREA, AT LEAST 3 CANVAS-COVERED

~~SECRET~~

~~SECRET~~

NPIC/R-1620/63

VEHICLES OR PIECES OF EQUIPMENT, AND AN OCCUPIED GUIDANCE AREA OBSERVED. FACILITIES INCLUDE 2 STORAGE BUILDINGS, 3 SMALLER BUILDINGS, AT LEAST 5 OTHER BUILDINGS OR SHEDS, AND 9 LARGE (3 NON-SOVIET), ONE MEDIUM, AND 4 SMALL TENTS OBSERVED IN CLOUD-FREE AREAS.

25X1D



25X1A



DELEITE SAM SITE 2259N 08045W

SIX REVETTED LAUNCHERS (AT LEAST 3 WITH MISSILES, ONE CANVAS-COVERED), ONE MISSILE TRANSPORTER, ONE CANVAS-COVERED HOLD AREA, AT LEAST 12 CANVAS-COVERED TRACKED PRIME MOVERS, 3 VAN TRAILERS, ONE CARGO TRUCK, 5 CANVAS-COVERED VEHICLES OR PIECES OF EQUIPMENT, 2 UNIDENTIFIED VEHICLES, AND AN OCCUPIED GUIDANCE AREA OBSERVED. FACILITIES INCLUDE 5 BUILDINGS, AT LEAST 8 SHEDS, AND 3 LARGE (2 NON-SOVIET) AND 3 MEDIUM (2 NON-SOVIET) TENTS.

25X1D



25X1A

SANTIAGO DE LAS VEGAS SAM ASSEMBLY AREA 2257N 08221W

TWENTY-SIX MISSILE TRANSPORTERS, 6 FLATBED TRAILERS AND AT LEAST 25 CARGO TRUCKS OBSERVED. FACILITIES INCLUDE 3 LARGE BUILDINGS, 7 LARGE (5 NON-SOVIET) TENTS, AND 3 CANVAS-COVERED EQUIPMENT AREAS. FOLIAGE LIMITS INTERPRETATION.

25X1D



CIFUENTES SAM ASSEMBLY AREA 2236N 08005W

AT LEAST 12 PROBABLE MISSILE TRANSPORTERS, 2 PROBABLE TRUCK-MOUNTED CRANES, AND ONE CARGO TRUCK OBSERVED. FACILITIES INCLUDE 2 LARGE NON-SOVIET AND ONE MEDIUM TENT, A LONG SHED-TYPE VEHICLE SHELTER, AND SEVERAL TENTS OR HUTS THROUGHOUT A WOODED AREA. FOLIAGE PRECLUDES FURTHER INTERPRETATION.

25X1D



~~SECRET~~

~~SECRET~~

NPIC/R-1620/63

25X1A

CAMAGUEY AIRFIELD SAM SITE 2122N 07750W

SIX UNRENETTED LAUNCHERS (4 CANVAS-COVERED), ONE MISSILE TRANSPORTER, ONE CANVAS-COVERED HOLD AREA, ONE CANVAS-COVERED PARKING AREA, 4 CANVAS-COVERED VEHICLES OR PIECES OF EQUIPMENT, ONE UNIDENTIFIED VEHICLE, AND AN OCCUPIED GUIDANCE AREA OBSERVED IN CLOUD-FREE AREAS.

25X1D

MANAGUA SAM SITE 2259N 08215W

SIX REVETTED LAUNCHERS, 3 CANVAS-COVERED MISSILE TRANSPORTERS, 3 REVETTED HOLD POSITIONS, 2 NET-COVERED EQUIPMENT REVETMENTS, 3 UNIDENTIFIED VEHICLES, AND AN OCCUPIED GUIDANCE REVETMENT OBSERVED. FACILITIES INCLUDE 9 LARGE NON-SOVIET AND ONE MEDIUM TENT.

25X1D

MAJANA SAM SITE 2241N 08249W

SIX UNRENETTED LAUNCHERS (3 CANVAS-COVERED), ONE UNCOVERED MISSILE ON TRANSPORTER, 3 COVERED HOLD AREAS, AND AN OCCUPIED GUIDANCE AREA OBSERVED. NO APPARENT CHANGE IN PERMANENT FACILITIES. FOUR LARGE (3 NON-SOVIET) AND ONE MEDIUM NON-SOVIET TENT OBSERVED.

25X1D

LA SALUD SAM SITE 2253N 08224W

SIX UNRENETTED LAUNCHERS (3 WITH MISSILES), 4 MISSILE TRANSPORTERS, 11 TRACKED PRIME MOVERS, ONE TRUCK-MOUNTED CRANE, 3 VAN TRAILERS, 10 VEHICLES OR PIECES OF EQUIPMENT, AND AN OCCUPIED GUIDANCE AREA WITH RADAR AND CANVAS-COVERED EQUIPMENT OBSERVED. FACILITIES INCLUDE 4 BARRACKS, 2 SUPPORT BUILDINGS, AND 8 LARGE NON-SOVIET AND ONE MEDIUM TENT.

25X1D

~~SECRET~~

~~SECRET~~

NPIC/R-1620/63

25X1A

SANTA CLARA SAM SITE 2229N 08000W

SIX UNREVIEWED LAUNCHERS (2 CANVAS-COVERED), 2 CANVAS-COVERED HOLD AREAS (ONE CONTAINING 7 PROBABLE MISSILE TRANSPORTERS), 8 TRACKED PRIME MOVERS, 6 CARGO TRUCKS, ONE TRUCK-MOUNTED CRANE, AND AN OCCUPIED GUIDANCE AREA CONTAINING RADAR AND CANVAS-COVERED VANS OR EQUIPMENT OBSERVED. FACILITIES INCLUDE 4 BARRACKS OR STORAGE BUILDINGS, 3 SMALL SUPPORT-TYPE BUILDINGS, AND 4 LARGE (3 NON-SOVIET), 2 MEDIUM (ONE NON-SOVIET), AND 2 SMALL TENTS.

25X1D

25X1A

PUNTA BRAVA SAM SITE 2301N 08231W

SIX UNREVIEWED LAUNCHERS, 4 CANVAS-COVERED MISSILE TRANSPORTERS, A CANVAS-COVERED HOLD AREA, 8 TRACKED PRIME MOVERS, 3 VAN TRAILERS, ONE TRUCK-MOUNTED CRANE, 2 VEHICLES OR PIECES OF EQUIPMENT, 3 CANVAS-COVERED VEHICLES OR PIECES OF EQUIPMENT, 3 CANVAS-COVERED EQUIPMENT AREAS, AND A GUIDANCE AREA WITH RADAR AND 6 NET- OR CANVAS-COVERED VAN TRAILERS OBSERVED. FACILITIES INCLUDE 5 BUILDINGS, AT LEAST 4 LARGE NON-SOVIET TENTS, AND 2 SMALL TENTS.

25X1D

25X1A

GUARA SAM SITE 2248N 08213W

SIX UNREVIEWED LAUNCHERS (3 CANVAS-COVERED), 4 CANVAS-COVERED MISSILE TRANSPORTERS, 9 TRACKED PRIME MOVERS, AND A GUIDANCE AREA WITH RADAR AND CANVAS-COVERED EQUIPMENT OBSERVED. FACILITIES INCLUDE 4 BARRACKS, 2 SMALL SUPPORT BUILDINGS, AND 6 LARGE NON-SOVIET AND 2 MEDIUM TENTS.

25X1D

~~SECRET~~

~~SECRET~~

NPIC/R-1620/63

25X1A

TORRENS SAM ASSEMBLY AREA 2257N 08227W

TWENTY-NINE MISSILE TRANSPORTERS, AT LEAST 30 OTHER VEHICLES, 10 CANVAS-COVERED VEHICLES OR PIECES OF EQUIPMENT, AND NUMEROUS MISSILE CANISTERS OBSERVED. NO APPARENT CHANGE IN FACILITIES.

25X1D

CABANAS SAM SITE 2258N 08258W

SIX UNREVIEWED CANVAS-COVERED LAUNCHERS, 2 VAN TRUCKS, ONE TRACKED PRIME MOVER, 3 VAN TRAILERS, 2 CARGO TRUCKS, AND AN OCCUPIED GUIDANCE AREA OBSERVED. FACILITIES INCLUDE 9 LARGE (6 NON-SOVIET), 7 MEDIUM, AND 2 SMALL TENTS.

25X1D

CAMPO FLORIDO CRUISE-MISSILE SITE 2306N 08211W

TWO UNREVIEWED PROBABLE LAUNCHERS, 5 POSSIBLE MISSILE TRANSPORTERS, AND A CANVAS-COVERED GUIDANCE AREA OBSERVED. OBLIQUITY PRECLUDES FURTHER INTERPRETATION.

25X1D

GUERRA CRUISE-MISSILE STORAGE 2300N 08250W

TEN CRUISE-MISSILE-RELATED VEHICLES, 4 POSSIBLE CRUISE-MISSILE TRANSPORTERS, NUMEROUS CANVAS-COVERED MISSILE CRATES, 3 TRUCK-MOUNTED CRANES, AND APPROXIMATELY 95 OTHER VEHICLES OBSERVED.

25X1D

-AIRFIELDS-

CAMILO CIENFUEGOS AIRFIELD 2229N 07955W

AIRCRAFT -- 4 FAGOT/FRESCO AND 2 HOUND.

25X1D

~~SECRET~~

~~SECRET~~

NPIC/R-1620/63

25X1A

CAMAGUEY INTERNATIONAL AIRFIELD 2125N 07751W

AIRCRAFT -- ONE CRATE OBSERVED IN CLOUD-FREE AREAS. THREE LARGE SOVIET TENTS OBSERVED AT THE WEST END OF THE ENE/WSW RUNWAY. THE PREVIOUSLY REPORTED NON-SOVIET TENTS IN THIS AREA HAVE BEEN REMOVED.

25X1D

25X1D

25X1A

HOLGUIN AIRFIELD 2047N 07618W

AIRCRAFT -- 4 FAGOT/FRESCO AND ONE CRATE OBSERVED IN CLOUD-FREE AREAS.

25X1D

CORONEL PASCUAL AIRFIELD 2307N 08117W

AIRCRAFT -- 2 HOUND AND 3 LIAISON.

25X1D

SAN ANTONIO DE LOS BANOS AIRFIELD 2252N 08230W

AIRCRAFT -- 38 FISHBED, 3 FARMER, 13 FAGOT/FRESCO, ONE HARE, AND 2 LIAISON. A 750 X 150 FT CRUSHED ROCK OR GRAVEL EXTENSION HAS BEEN ADDED TO THE WNW END OF THE ESE/WWN RUNWAY. GRADING CONTINUES BEYOND THIS POINT.

25X1D

SAN JULIAN AIRFIELD 2205N 08409W

AIRCRAFT -- 10 FAGOT/FRESCO, 16 ZLIN TRENER, 7 LIAISON, AND 7 PROBABLE ZLIN TRENER FUSELAGES. NO APPARENT CHANGE IN PERMANENT FACILITIES. FIFTY-TWO LARGE (49 NON-SOVIET) TENTS AND APPROXIMATELY 60 VEHICLES OBSERVED.

25X1D

~~SECRET~~

~~SECRET~~

NPIC/R-1620/63

25X1A

JOSE MARTI INTERNATIONAL AIRFIELD 2259N 08224W

PARKING AREA IMMEDIATELY WEST OF SW END OF RUNWAY
CONTAINS 15 FAGOT/FRESCO, 4 PROBABLE POL TRUCKS,
ONE SEMI-TRAILER POL TRUCK, 3 PROBABLE VAN TRUCKS,
AND 11 CARGO TRUCKS.
OPERATIONS AREA -- ONE CLEAT, ONE CUB, ONE COOT,
2 BRITANNIA, ONE C-54, 3 CRATE (ONE WITHOUT WINGS),
2 C-46, AND ONE C-47.
MAINTENANCE AREA -- ONE B-26, 3 CONSTELLATION,
2 C-54, 4 C-46 (ONE WITHOUT WINGS) AND ONE LODESTAR
(SEE ATTACHMENT 1)

25X1D

CAMPO LIBERTAD AIRFIELD 2305N 08226W

AIRCRAFT -- 3 CRATE, ONE C-54, 2 C-46, 2 C-47,
9 COLT, AND 39 LIAISON.

25X1D

PLAYA BARACOA AIRFIELD 2302N 08235W

AIRCRAFT -- 2 CRATE, 21 HOUND, 3 HARE, AND ONE
LIAISON.

25X1D

PINAR DEL RIO AIRFIELD 2225N 08341W

AIRCRAFT -- 2 COLT AND 2 LIAISON.

25X1D

-PORTS-

MARIEL NAVAL BASE AND NAVAL AIR STATION 2259N 08244W

VESSELS -- ONE KOMAR-CLASS PGMG (ON MARINE RAILWAY),
ONE PF (), ONE KRONSTADT-CLASS PC, AND 2
SMALL PC AT NAVAL AIR STATION, AND ONE LARGE
FREIGHTER UNLOADING AT CITY PIER.
APPROXIMATELY 16 UNIDENTIFIED CRATES AND APPROXIMATELY
30 VEHICLES AT NAVAL AIR STATION.

25X1A

~~SECRET~~

SECRET

NPIC/R-1620/63

25X1D

THE 6-GUN AAA SITE REMAINS OCCUPIED.

25X1A

CABANAS NAVAL FACILITY 2258N 08258W

VESSELS -- 9 KOMAR-CLASS PGMG (2 AT PRINCIPAL PIER)
AND 2 PC.
AREA 1 -- NO APPARENT CHANGE IN PERMANENT FACILITIES.
ONE LARGE, 3 MEDIUM, AND ONE SMALL TENT AND
APPROXIMATELY 35 VEHICLES.
AREA 2 -- NO APPARENT CHANGE.
AREA 3 -- NO APPARENT CHANGE IN FACILITIES.
APPROXIMATELY 20 VEHICLES. THE 7 UNIDENTIFIED
CRATES REMAIN.
AREA 4 -- NO APPARENT CHANGE IN PERMANENT FACILITIES.
ONE LARGE TENT. NO VEHICLES OBSERVED.
AREA 5 -- NO APPARENT CHANGE.
AREA 6 -- ONE BARRACKS-TYPE BUILDING, 4 REVETMENTS
(ONE WITH BUILDING UNDER CONSTRUCTION, ONE WITH
BUILDING FOUNDATION), AND ONE MEDIUM TENT.
PRINCIPAL PIER -- NO APPARENT CHANGE IN FACILITIES.
THREE UNIDENTIFIED VEHICLES.

25X1D

25X1A

PUNTA ALEGRE PORT 2223N 07847W

25X1D

NO LARGE VESSELS OBSERVED.

LA ISABELA PORT 2256N 08001W

25X1D

VESSELS -- 2 SMALL PC, ONE LARGE FREIGHTER, AND
ONE LARGE TANKER.

CAIBARIEN PORT 2232N 07928W

25X1D

NO LARGE VESSELS OBSERVED IN CLOUD-FREE AREAS.

SECRET

~~SECRET~~

NPIC/R-1620/63

25X1A

CARDENAS PORT 2302N 08112W

NO LARGE VESSELS OBSERVED.

25X1D

SANTA LUCIA PORT 2240N 08358W

NO APPARENT CHANGE IN FACILITIES.
ONE LARGE FREIGHTER OBSERVED ANCHORED APPROXIMATELY
3 NM OFFSHORE WITH 3 LIGHTERS ALONGSIDE.

25X1D

25X1A

MATANZAS PORT 2303N 08134W

VESSELS -- 3 LARGE FREIGHTERS.

25X1D

SURGIDERO DE BATABANO PORT 2241N 08212W

NO LARGE VESSELS OBSERVED.

25X1D

HAVANA PORT 2308N 08221W

VESSELS -- 2 PF, ONE KRONSTADT-CLASS PC, 2 KOMAR-
CLASS PGMG, 6 POSSIBLE P-4 MTB, 21 LARGE FREIGHTERS,
AND 10 COASTAL FREIGHTERS OR TRAWLERS.
OBLIQUITY AND POOR IMAGE QUALITY PRECLUDE FURTHER
INTERPRETATION.

25X1D

25X1A

CABANAS PORT 2259N 08256W

NO LARGE VESSELS OBSERVED.

25X1D

~~SECRET~~

~~SECRET~~

NPIC/R-1620/63

25X1A

BAHIA HONDA PORT 2255N 08311W

25X1D

NO LARGE VESSELS OBSERVED.

-ELECTRONICS-

HAVANA COMMUNICATIONS CENTER 2301N 08226W

SEVEN PROBABLE TANKS/SP GUNS OBSERVED AT EDGE OF WOODED AREA.

SEVEN POSSIBLE TRACKED PRIME MOVERS, 13 CARGO TRUCKS, 2 VAN TRUCKS, 3 PROBABLE VAN TRAILERS, AND 10 UNIDENTIFIED CANVAS-COVERED VEHICLES ALSO OBSERVED. THE 3-GUN AND 6-GUN AAA SITES REMAIN OCCUPIED.

25X1D

-MILITARY ACTIVITY-

HAVANA AREA, MILITARY ACTIVITY 2302N 08228W

ON SW EDGE OF HAVANA NEAR ROUTE 2-32.

NINETY-THREE CARGO TRUCKS (89 WITH FA PIECES IN TOW), 15 UTILITY TRUCKS, AND 27 UNIDENTIFIED TRUCKS PARKED IN CONVOY FORMATION HEADED SOUTHWEST ALONG ROUTE 2-32 FROM UTM [REDACTED]

25X1D

(SEE ATTACHMENT 2)

OTHER MILITARY ACTIVITY ADJACENT TO ROUTE 2-32 INCLUDES THE FOLLOWING --

25X1D

AREA 1 [REDACTED] -- 21 LARGE NON-SOVIET TENTS, 14 CARGO TRUCKS, AND 70 OTHER VEHICLES.

(SEE ATTACHMENT 3)

25X1D

AREA 2 [REDACTED] -- 32 LARGE NON-SOVIET AND ONE SMALL TENT. TWENTY-TWO TRACKED PRIME MOVERS, 145 CARGO TRUCKS, AT LEAST 47 FA PIECES, AND NUMEROUS GROUPS OF UNIDENTIFIED MATERIAL.

(SEE ATTACHMENT 3)

25X1D

AREA 3 [REDACTED] -- 8 LARGE NON-SOVIET AND 4 MEDIUM (2 NON-SOVIET) TENTS, 66 PROBABLE CARGO TRUCKS, 9 UNIDENTIFIED VEHICLES, AND 23 FA PIECES.

(SEE ATTACHMENT 4)

(AMS SERIES E723, SHEET 3785-III, 4TH ED).

25X1D

~~SECRET~~

~~SECRET~~

NPIC/R-1620/63

25X1A

LA FLORA MILITARY STORAGE 2252N 08233W

NO APPARENT CHANGE IN FACILITIES.
ELEVEN PROBABLE TANKS/SP GUNS AND AT LEAST 20 OTHER
VEHICLES OBSERVED.
THE 6-GUN AAA SITE REMAINS OCCUPIED.

25X1D

25X1A

ARTEMISA MILITARY CAMP 2251N 08248W

25X1D

NO APPARENT CHANGE SINCE

25X1D

MARIEL MILITARY CAMP LOMA GOBERNADORA 2256N 08251W

THIRTEEN CARGO TRUCKS OBSERVED.
SHADOWS PRECLUDE DETAILED INTERPRETATION.

25X1D

SANTIAGO DE LAS VEGAS AREA MILITARY CAMP 2258N 08220W

TWELVE PROBABLE FROG MISSILE TRANSPORTERS, 4 TANKS/SP
GUNS, 11 UNIDENTIFIED TRACKED VEHICLES, APPROXIMATELY
40 CARGO TRUCKS, 8 UTILITY TRUCKS, 2 VAN TRUCKS, 15
PROBABLE CARGO TRAILERS, 7 UNIDENTIFIED VEHICLES,
AND NUMEROUS STACKS OF UNIDENTIFIED MATERIAL OBSERVED
ON PARADE FIELD.
THE 6-GUN AAA SITE REMAINS OCCUPIED. AT LEAST 4
POSITIONS OF THE 9-GUN AAA SITE ARE OCCUPIED.

25X1D

25X1A

SAN JOSE DE LAS LAJAS CAMP AND DEPOT 2255N 08210W

NO APPARENT CHANGE IN FACILITIES.
THREE CARGO TRUCKS OBSERVED.

25X1D

~~SECRET~~

~~SECRET~~

NPIC/R-1620/63

25X1A

TORRENS MILITARY COMPLEX 2259N 08228W

AREA 1 -- 3 LARGE AND ONE SMALL TENT, 3 VAN TRUCKS, 3 POSSIBLE VAN TRAILERS, 6 CARGO TRUCKS, AND ONE UTILITY TRUCK.

AREA 2 -- NO APPARENT CHANGE IN FACILITIES. APPROXIMATELY 40 CARGO TRUCKS, 19 UTILITY TRUCKS, AND 20 PROBABLE VAN TRUCKS.

AREA 3 -- ONE VAN TRUCK AND 2 CANVAS-COVERED EQUIPMENT AREAS.

AREA 4 -- 24 CARGO TRUCKS AND 4 UNIDENTIFIED VEHICLES.

AREA 5 -- NO APPARENT CHANGE IN FACILITIES. TEN PROBABLE TRACKED PRIME MOVERS, 14 CARGO TRUCKS, 3 CARGO TRAILERS, AND AN OCCUPIED 6-GUN AAA SITE.

AREA 6 -- 17 TANKS/SP GUNS, 25 CARGO TRUCKS, AND 8 UNIDENTIFIED VEHICLES.

25X1D

25X1A

SANTA CLARA AREA, MILITARY ACTIVITY 2221N 07957W

NO APPARENT CHANGE IN FACILITIES.
EIGHTEEN TANKS/SP GUNS OBSERVED IN CLOUD-FREE AREAS.

25X1D

MADRUGA MILITARY AREA 2256N 08149W

NO APPARENT CHANGE IN FACILITIES.
ONE CARGO TRUCK AND ONE UTILITY TRUCK OBSERVED IN CLOUD-FREE AREAS.

25X1D

LIMONAR MILITARY CAMP SE 2255N 08124W

MAIN CAMP -- NO APPARENT CHANGE IN PERMANENT FACILITIES. NINETEEN LARGE (15 NON-SOVIET), 5 MEDIUM, AND 6 SMALL TENTS, 23 CARGO TRUCKS, 6 UTILITY TRUCKS, AND 7 VAN TRUCKS.

AREA .5 NM WEST -- ONE LARGE NON-SOVIET AND 2 MEDIUM (ONE NON-SOVIET) TENTS, 18 VAN TRUCKS AND ONE UNIDENTIFIED VEHICLE.

25X1D

~~SECRET~~

~~SECRET~~

NPIC/R-1620/63

25X1A

CAMAGUEY MILITARY CAMP 2126N 07753W

NO APPARENT CHANGE IN FACILITIES IN CLOUD-FREE AREAS
SIXTY-FIVE CARGO TRUCKS, 8 PROBABLE CARGO TRUCKS,
AND 47 FA PIECES OBSERVED IN CLOUD-FREE AREAS.

25X1D

MANAGUA MILITARY CAMP 2258N 08217W

AIRCRAFT -- 23 HOUND.
THREE TANKS/SP GUNS, 37 PROBABLE TANKS/SP GUNS,
APPROXIMATELY 100 CARGO TRUCKS, 35 LOWBOY TRAILERS,
AND AT LEAST 25 UNIDENTIFIED VEHICLES OR PIECES OF
EQUIPMENT OBSERVED NORTH OF RUNWAY.
APPROXIMATELY 100 VEHICLES OBSERVED IN PARKING AREA
IMMEDIATELY EAST OF BARRACKS AND APPROXIMATELY 200
OTHER VEHICLES OBSERVED SCATTERED THROUGHOUT
BARRACKS AREA.

25X1D

25X1A

GUANE AREA, PROBABLE TANK TRAINING COURSE 2215N 08409W

NO ACTIVITY OBSERVED.

25X1D

NAZARENO, MILITARY AREA 2258N 08214W

AT LEAST 15 VEHICLES OBSERVED.
FOLIAGE AND SHADOWS LIMIT INTERPRETATION.

25X1D

CAMPO FLORIDO MILITARY CAMP 2307N 08206W

NO APPARENT CHANGE IN FACILITIES.
AT LEAST 11 TANKS/SP GUNS AND 15 CARGO TRUCKS
OBSERVED.
HAZE PRECLUDES FURTHER INTERPRETATION.

25X1D

~~SECRET~~

~~SECRET~~

NPIC/R-1620/63

25X1A

LOMA DE TIERRA, MILITARY CAMP 2301N 08213W

MAIN CAMP -- ONE LARGE BUILDING, 2 SMALL BUILDINGS,
AND 9 LARGE NON-SOVIET TENTS.
AREA NORTH ALONG ROUTE 2-19 -- 13 LARGE NON-SOVIET
TENTS, APPROXIMATELY 175 PROBABLE TANKS, 13 POSSIBLE
TANKS, AT LEAST 30 PROBABLE CARGO TRUCKS, AND
APPROXIMATELY 30 PROBABLE UTILITY TRUCKS.
OBLIQUITY PRECLUDES FURTHER INTERPRETATION.

25X1D

25X1A

HAVANA MILITARY CAMP CALABAZAR 2301N 08217W

AREA 1 -- 12 TANKS/SP GUNS, 5 POSSIBLE TANKS/SP GUNS,
AND 12 CARGO TRUCKS.
AREA 2 -- AT LEAST 42 CARGO TRUCKS AND 3 UTILITY
TRUCKS.
AREA 3 -- NO VEHICLES OR EQUIPMENT.
AREA 4 -- 5 VAN TRUCKS.
AREA 5 -- 16 CARGO TRUCKS, 7 FA PIECES, AND 7
UNIDENTIFIED VEHICLES.
AREA 6 -- NO VEHICLES OR EQUIPMENT OBSERVED. THE
6-GUN AAA SITE REMAINS OCCUPIED.

25X1D

25X1A

GUANE, MILITARY CAMP 2212N 08408W

25X1D

25X1D

NO APPARENT CHANGE IN FACILITIES EXCEPT FOR A
NEWLY COMPLETED TANK FIRING RANGE AT

25X1D

ELEVEN TANKS/SP GUNS AND AT LEAST 22 CARGO TRUCKS
OBSERVED.

25X1D

AN OCCUPIED 3-GUN AAA SITE OBSERVED AT
(AMS SERIES E723, SHEET 3382-I, 1ST ED).

25X1D

HOLGUIN MILITARY CAMP NW 2057N 07616W

NO APPARENT CHANGE IN FACILITIES.
TWENTY-ONE TANKS/SP GUNS, 3 CARGO TRUCKS, AND 10 VAN
TRUCKS (3 WITH SMALL TRAILERS) OBSERVED.

~~SECRET~~

~~SECRET~~

NPIC/R-1620/63

25X1D

[REDACTED]

25X1A

SAN JOSE DE LAS LAJAS STORAGE 2257N 08211W

NO APPARENT CHANGE IN FACILITIES.
NO VEHICLES OBSERVED.

25X1D

[REDACTED]

EL CRIOLLO MILITARY CAMP 2259N 08225W

AT LEAST 20 PROBABLE VAN TRUCKS AND 8 PROBABLE
CARGO TRUCKS OBSERVED.

25X1D

[REDACTED]

CANTEL MILITARY CAMP 2302N 08119W

FACILITIES INCLUDE 4 LARGE AND 5 SMALL BARRACKS, ONE
ADMINISTRATION BUILDING, 4 LARGE STORAGE OR
MAINTENANCE BUILDINGS, 5 OTHER BUILDINGS, AND ONE
MEDIUM NON-SOVIET TENT.
ONE TANK/SP GUN, 7 UTILITY VEHICLES, AND AT LEAST
20 UNIDENTIFIED VEHICLES OBSERVED.
THE 3-GUN AAA SITE APPEARS OCCUPIED.

25X1D

[REDACTED]

25X1A

LOMAS TETAS DE MANAGUA, TANK PARK 2258N 08219W

FIVE TANKS/SP GUNS, 9 PROBABLE TRACKED PRIME MOVERS,
AND 9 POSSIBLE FA PIECES OBSERVED.

25X1D

[REDACTED]

GUANAJAY MILITARY CAMP MARTIN MESA 2257N 08243W

NO APPARENT CHANGE IN PERMANENT FACILITIES.
TWO LARGE NON-SOVIET AND 2 SMALL TENTS.
TWELVE TANKS/SP GUNS, 111 CARGO TRUCKS (3 PULLING
SMALL TRAILERS), 2 UTILITY TRUCKS, AND 10 FA PIECES
OBSERVED.

~~SECRET~~

~~SECRET~~

NPIC/R-1620/63

25X1D

[REDACTED]

25X1A

ALTAGRACIA, MILITARY AREA 2124N 07742W

TWELVE TANKS/SP GUNS OBSERVED IN CLOUD-FREE AREAS.

25X1D

[REDACTED]

GUANABANA, MILITARY AREA 2258N 08132W

NORTH AREA -- 24 CARGO TRUCKS AND 18 UNIDENTIFIED VEHICLES OR PIECES OF EQUIPMENT.

SOUTH AREA -- 21 CARGO TRUCKS AND 18 UNIDENTIFIED VEHICLES OR PIECES OF EQUIPMENT.

25X1D

[REDACTED]

LIMONAR, TANK TRAINING AREA 2254N 08122W

FACILITIES INCLUDE 12 BARRACKS, ONE PROBABLE ADMINISTRATION BUILDING, 4 LARGE STORAGE BUILDINGS, 7 SUPPORT BUILDINGS, 2 MISCELLANEOUS BUILDINGS, AND 2 LARGE NON-SOVIET TENTS.

AT LEAST 14 UNIDENTIFIED VEHICLES OBSERVED.

NINE SMALL SHEDS ARE LOCATED ON A TANK-DRIVER TRAINING AREA IMMEDIATELY SOUTH OF THE BARRACKS AREA.

25X1D

[REDACTED]

25X1A

SAN DIEGO DE NUNEZ, MILITARY CAMP 2255N 08305W

EIGHT CARGO TRUCKS OBSERVED.

25X1D

[REDACTED]

GUANABANA AREA, MILITARY CAMP 2258N 08134W

NO APPARENT CHANGE IN FACILITIES.

THIRTEEN TANKS/SP GUNS OBSERVED.

25X1D

[REDACTED]

~~SECRET~~

~~SECRET~~

NPIC/R-1620/63

25X1A

MARTI AREA, ARMOR TRAINING AREA 2258N 08059W

EIGHT TANKS/SP GUNS, ONE PROBABLE TANK/SP GUN, 2 CARGO TRUCKS, AND 2 UNIDENTIFIED VEHICLES OBSERVED.

25X1D

GUAYABAL MILITARY CAMP 2254N 08237W

MAIN CAMP -- 3 TRACKED PRIME MOVERS, 11 CARGO TRUCKS, 2 FA PIECES, 6 POSSIBLE FA PIECES, AND 4 PROBABLE AAA PIECES.

AREA 1 -- 13 CARGO TRUCKS, 4 PROBABLE FA PIECES, AND 4 PROBABLE AAA PIECES.

AREA 2 -- AT LEAST 10 VEHICLES OR PIECES OF EQUIPMENT.

AREA 3 -- FOLIAGE PRECLUDES INTERPRETATION.

25X1D

25X1A

SANTA CLARA AREA, ARTILLERY TRAINING AREA 2224N 08000W

AREA 1 -- 6 UNIDENTIFIED VEHICLES.

AREA 2 -- 6 CARGO TRUCKS. THE 6-GUN AAA SITE REMAINS OCCUPIED.

AREA 3 -- 5 CARGO TRUCKS.

AREA 4 -- 21 CARGO TRUCKS.

AREA 5 -- 22 TANKS/SP GUNS AND 2 CARGO TRUCKS. THE TWO 3-GUN AAA SITES APPEAR TO BE OCCUPIED.

25X1D

25X1A

SPECIAL AREA ALPHA 2259N 08225W

NO MILITARY ACTIVITY OBSERVED.

25X1D

SPECIAL AREA HOTEL 2301N 08248W

NO NEW MILITARY EQUIPMENT OR ACTIVITY OBSERVED.

25X1D

~~SECRET~~

~~SECRET~~

NPIC/R-1620/63

25X1A

SPECIAL AREA BRAVO BLUE 2253N 08232W

25X1D

NO NEW MILITARY ACTIVITY OBSERVED.

SPECIAL AREA BRAVO RED 2254N 08228W

25X1D

NO NEW MILITARY ACTIVITY OBSERVED.

SPECIAL AREA VICTOR 2302N 08235W

25X1D

SEE PLAYA BARACOA AIRFIELD.

SPECIAL AREA TANGO 2259N 08244W

25X1D

NO NEW MILITARY ACTIVITY OBSERVED.

SPECIAL AREA JULIET 2301N 08240W

25X1D

NO NEW MILITARY ACTIVITY OBSERVED.

MATANZAS LANDING BEACH 2301N 08126W

25X1D

NO NEW MILITARY ACTIVITY OBSERVED IN CLOUD-FREE AREAS.

-MISCELLANEOUS ACTIVITY-

25X1A

MANAGUA MUNITIONS STORAGE SITE 2258N 08218W

NO APPARENT CHANGE IN FACILITIES.

~~SECRET~~

~~SECRET~~

NPIC/R-1620/63

25X1D



25X1A

BEJUCAL MUNITIONS STORAGE SITES NE AND NW 2256N 08223W



HEADQUARTERS AREA CONTAINS 23 LARGE (12 NON-SOVIET)
AND ONE MEDIUM TENT, 8 VAN TRUCKS, 5 VAN TRAILERS, 14
CARGO TRUCKS, 2 UTILITY TRUCKS, AND 9 UNIDENTIFIED
VEHICLES OR PIECES OF EQUIPMENT.

25X1D



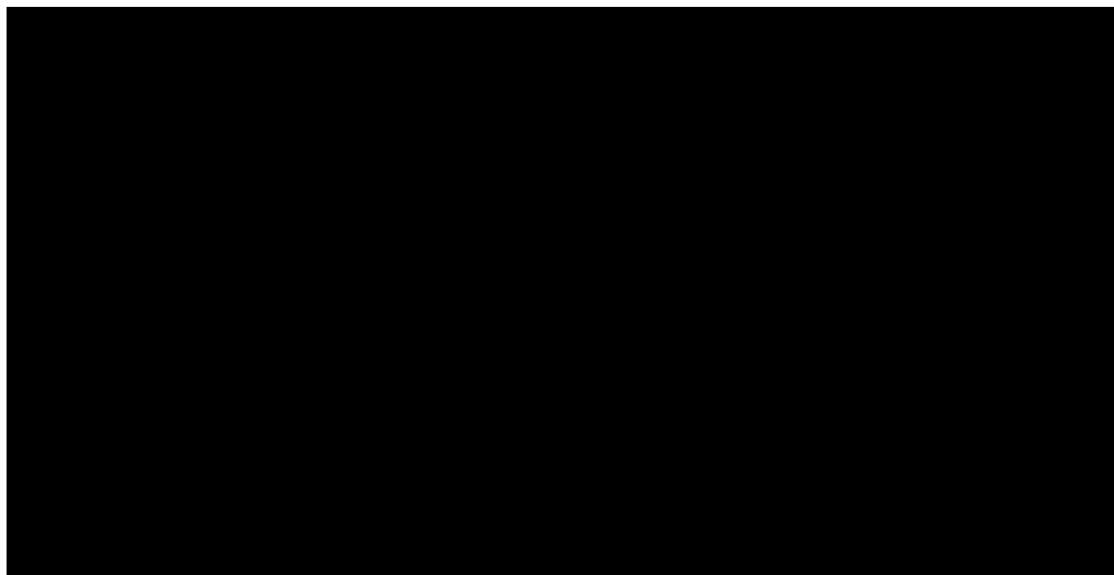
25X1A

SANTA CLARA MILITARY INSTALLATION CUBANACAN 2224N 07953W



CLUB CUBANACAN -- 28 CARGO TRUCKS, 4 UTILITY TRUCKS,
2 CARGO TRAILERS, AND 2 VAN TRAILERS.
STORAGE AREA NORTH -- 6 UNIDENTIFIED VEHICLES.
ESCUELA TECNOLOGICA -- NO MILITARY ACTIVITY OBSERVED.

25X1D



25X1A



-STATUS OF OTHER TARGETS-

THE FOLLOWING TARGETS SHOW NO APPARENT CHANGE
SINCE LAST COVERAGE--

25X1A

HAVANA AMMUNITION STORAGE AREA	2301N 08226W
MESTANZA, EXPLOSIVES STORAGE SITE	2228N 08347W
CONSOLACION DEL SUR MILITARY CAMP	2230N 08331W
SAN FRANCISCO DE PAULA, MUNITIONS STORAGE SITE	2303N 08218W



~~SECRET~~

SECRET

NPIC/R-1620/63

25X1D

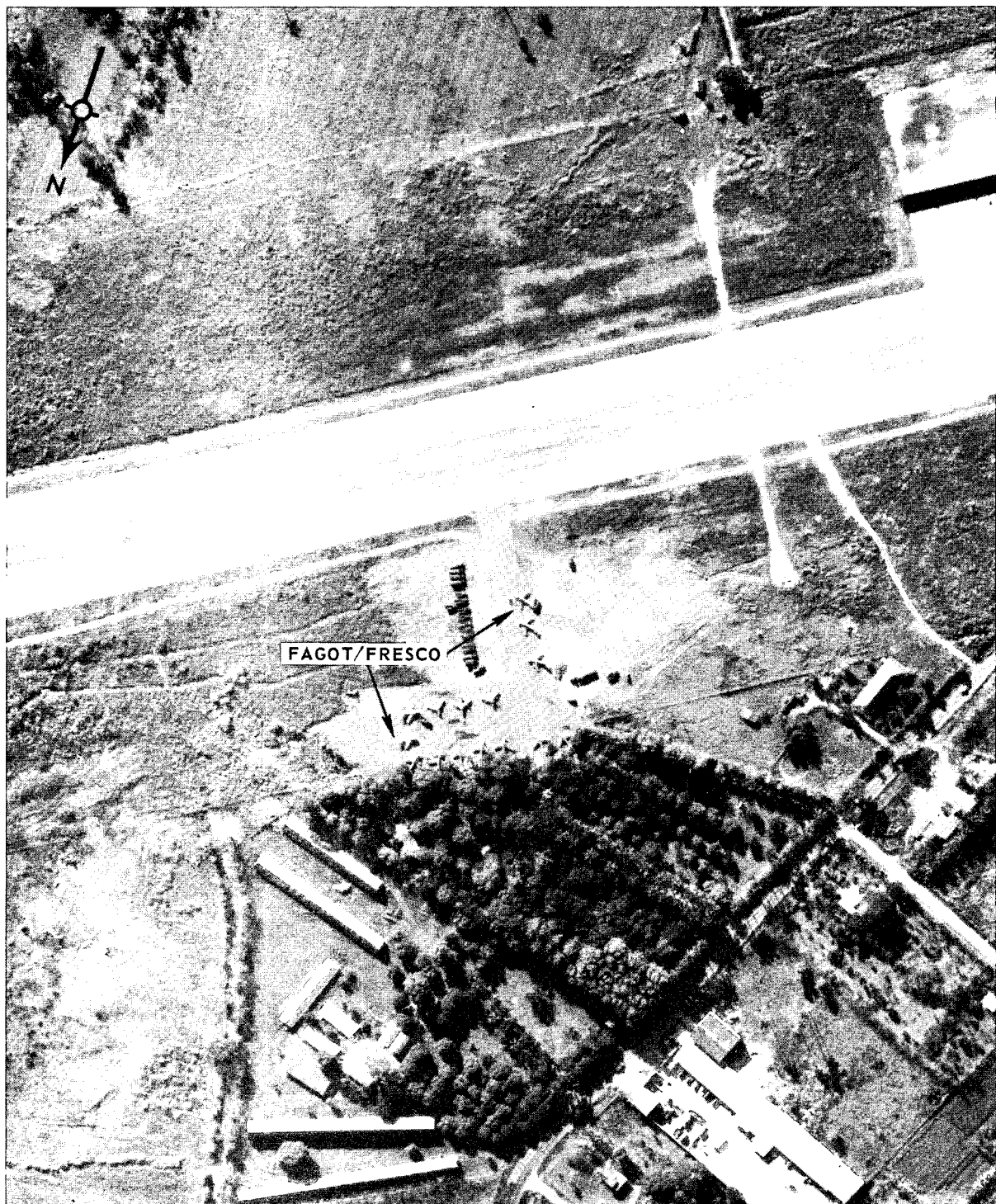
25X1A

THE FOLLOWING TARGETS COULD BE IDENTIFIED BUT
NOT INTERPRETED --

HAVANA SAM SITE	2309N 08213W
CIENFUEGOS SAM SITE	2202N 08024W
PINAR DEL RIO SAM ASSEMBLY AREA	2221N 08339W
LA COLOMA SAM SITE 2	2219N 08334W
SANTA CRUZ DEL NORTE CRUISE-MISSILE SITE	2309N 08156W
JAIME GONZALES AIRFIELD	2209N 08025W
CIENFUEGOS PORT	2208N 08027W
PINAR DEL RIO, MILITARY CAMP	2223N 08342W
BAHIA HONDA, MILITARY CAMP	2258N 08311W
HOLGUIN MILITARY CAMP	2053N 07615W
CAMAGUEY COUNTRY CLUB MILITARY CAMP	2121N 07751W
REMEDIOS AREA, MILITARY CAMP	2227N 07934W
BAJURAYABO AREA MILITARY CAMP	2308N 08210W
GUANABACOA, MILITARY AREA	2307N 08215W
MINAS AREA, MILITARY CAMP	2306N 08211W
HAVANA VEHICLE PARK	2309N 08215W
ANTON RECIO, MILITARY INSTALLATION	2211N 08036W
CABANA FORTRESS	2308N 08220W
JAGUA, MILITARY AREA	2205N 08029W
TARARA LANDING BEACH	2310N 08212W
VARADERO LANDING BEACH	2308N 08118W
CIENFUEGOS LANDING BEACH	2202N 08036W
ENSENADA COLORADO LANDING BEACH	2202N 08025W
CAYO FRANCES ENGINEERING SITE	2238N 07914W

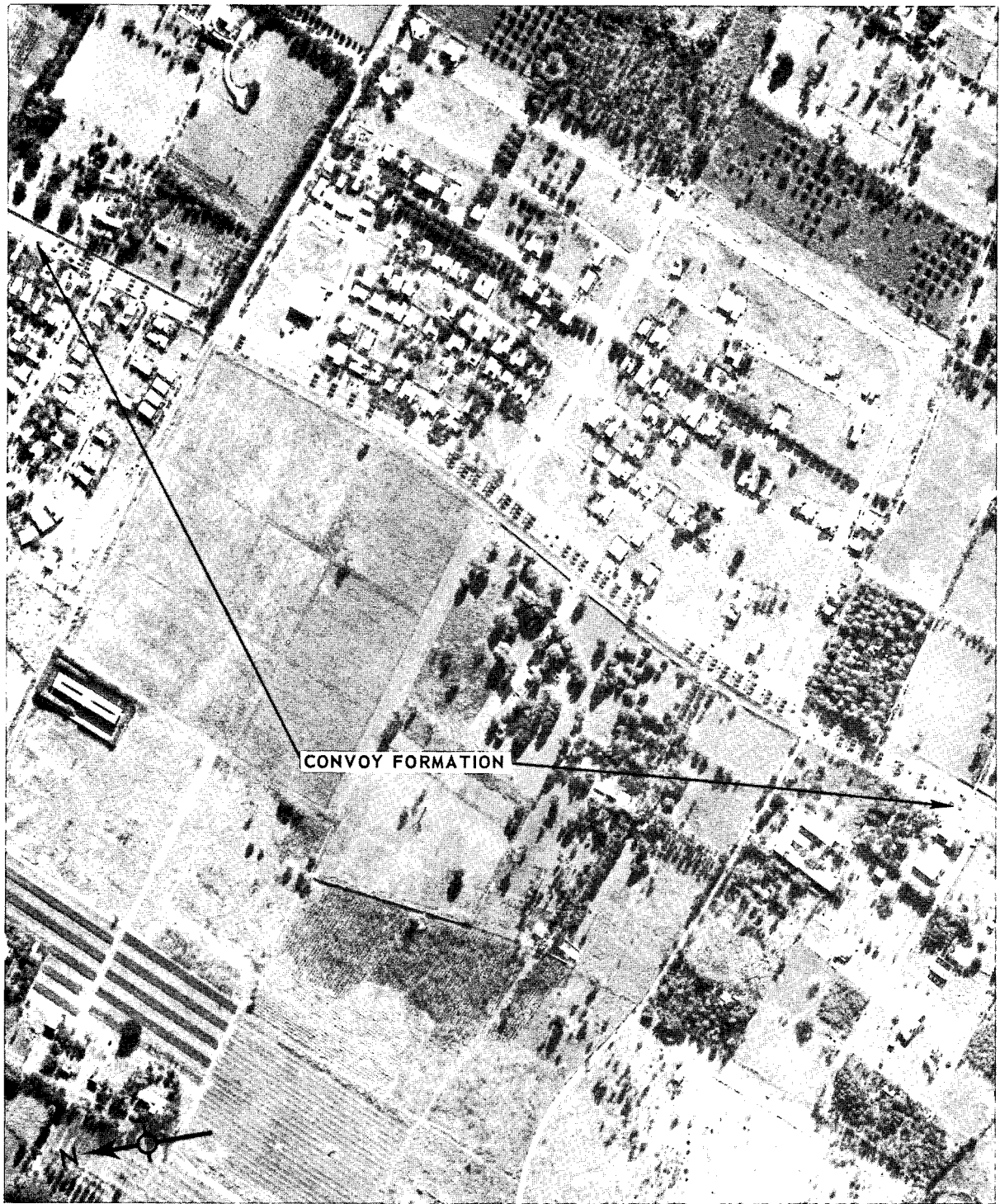
25X1D

SECRET



JOSE MARTI INTERNATIONAL AIRFIELD.

NPIC H-6529 (12/63)

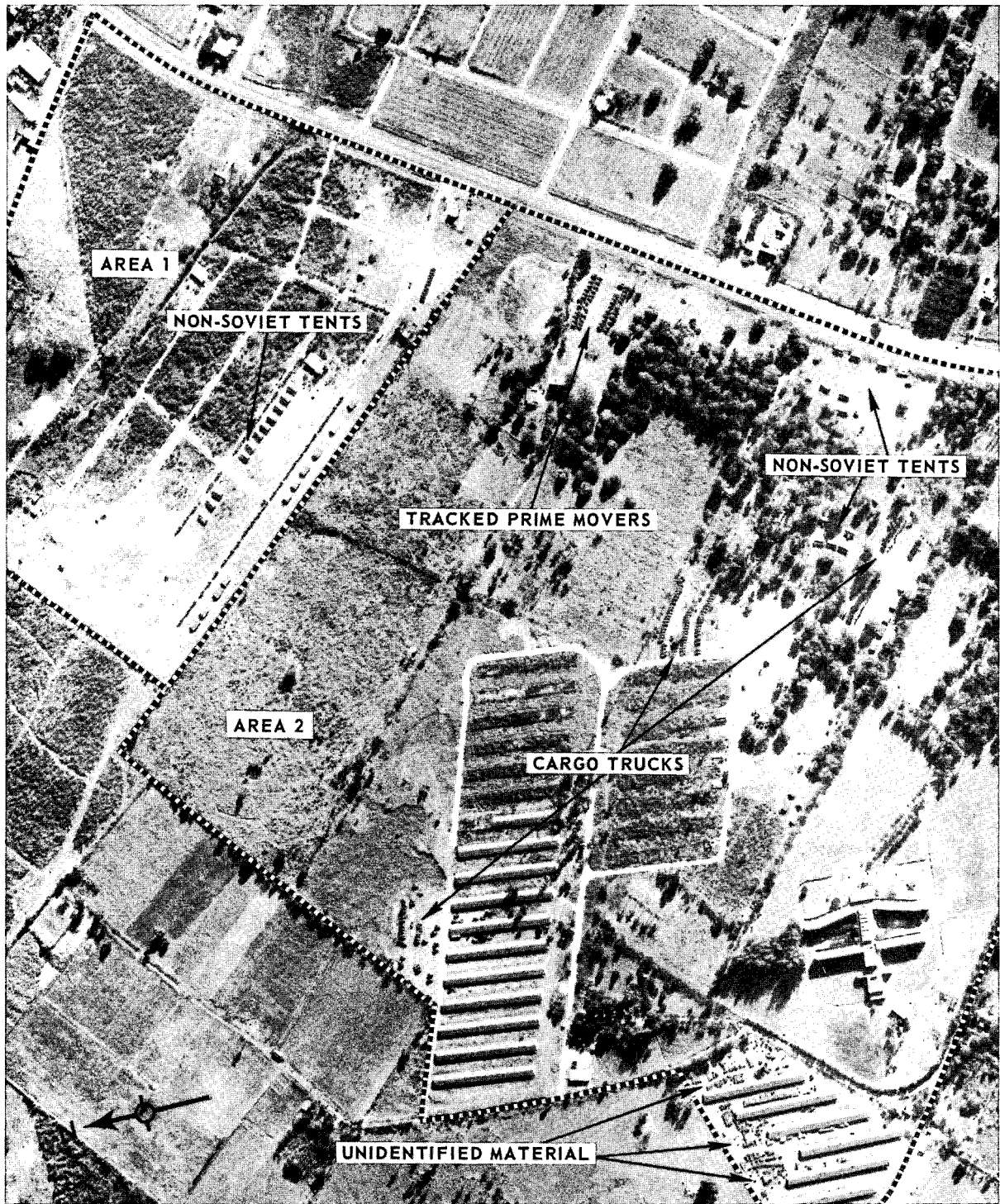


HAVANA AREA MILITARY ACTIVITY.

NPIC H-6830 (12/63)

SECRET

NPIC/R-1620/63
ATTACHMENT 3



HAVANA AREA MILITARY ACTIVITY.

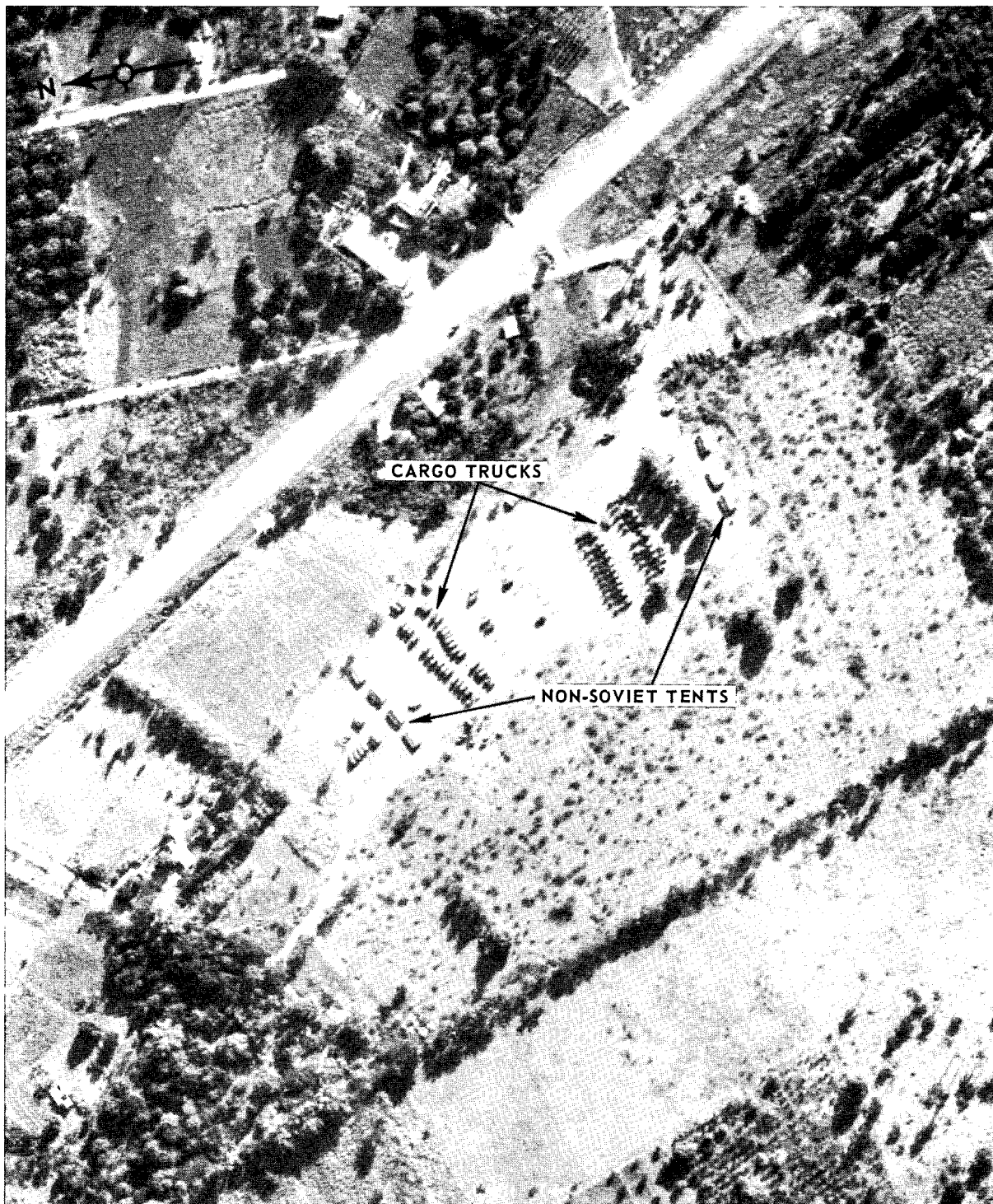
NPIC H-6531 (12/63)

SECRET

SECRET

NPIC/R-1620/63

ATTACHMENT 4



NPIC H-6532 (12/63)

HAVANA AREA MILITARY ACTIVITY.

SECRET

~~SECRET~~

~~SECRET~~