

Copy 145

3 Pages

NPIC/R-97/64

February 1964

PHOTOGRAPHIC INTERPRETATION REPORT

UKMERGE MRBM COMPLEX, USSR



CIA



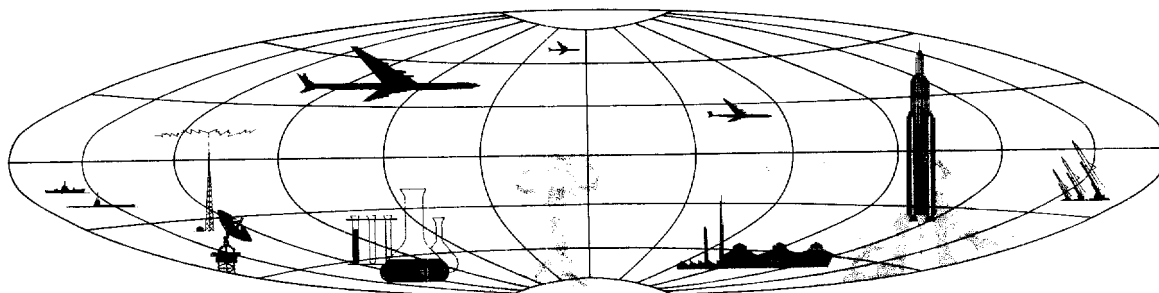
DIA

Handle Via **TALENT - KEYHOLE** Control Only

WARNING

This document contains classified information affecting the national security of the United States within the meaning of the espionage laws U. S. Code Title 18, Sections 793 and 794. The law prohibits its transmission or the revelation of its contents in any manner to an unauthorized person, as well as its use in any manner prejudicial to the safety or interest of the United States or for the benefit of any foreign government to the detriment of the United States. It is to be seen only by personnel especially indoctrinated and authorized to receive TALENT-KEYHOLE information. Its security must be maintained in accordance with KEYHOLE and TALENT regulations.

NATIONAL PHOTOGRAPHIC INTERPRETATION CENTER



TOP SECRET

GROUP 1
Excluded from automatic
downgrading and declassification

NPIC/R-97/64

UKMERGE MRBM COMPLEX, USSR

LAUNCH AREA NO 1 (TYPE I)

COORDS: 55-08-00N 24-38-45E

25X1A

ASSOC AREAS: Launch Area No 2, 3.9 nm to NE; Ukmerge Fixed Field-Type Site, 2.9 nm to ESE

TDI NAME: Vepriai Launch Site

LOCATION: 8.6 nm SW of Ukmerge

FIRST APPEARED: [REDACTED]
CONSTRUCTION STATUS: Complete [REDACTED]

Launch Site

TERRAIN: Rolling VEGETATION: Wooded
SECURITY: Double fence

PADS: Four circular pads (190' diameter) with 460' separation and oriented on an azimuth of 35°

READY BLDGS: Four drive-through type (190' x 45')

CONTROL BLDGS: Two possible (size undetermined because of poor image quality)

OTHER: One small possible guardhouse (size undetermined) next to main access road to launch site and immediately inside the security fence

Site Support Facility

TECHNICAL SECTION: Location 1,200' SSW of launch site. Consists of 3 loop roads with several clearings located along 2 of the loop roads. Third loop road has the following bldgs

along it: one bldg approx 190' x 50', one bldg 65' x 65', and 6 other possible bldgs of undetermined size. In addition, 2 bldgs 125' x 60' and a clearing or parking area are located [REDACTED]

25X9
25X9

ADMINISTRATION & HOUSING SECTION: Located 2,500' S of launch site, on a branch road to the E of the main access road. Area contains 9 barracks-type bldgs (145' x 40') and 3 other possible bldgs of undetermined size.

25X9

Rail-to-Road Transfer Point

Probably the facilities at Ukmerge or Jonava. Roads to launch area from both cities are improved.

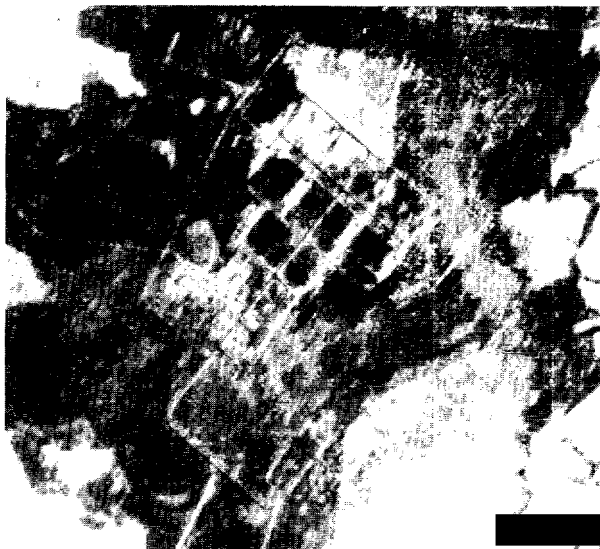
Other MRBM Activity Within 25 NM Radius of Launch Area

Jonava MRBM Complex is located 18.5 nm to the SW

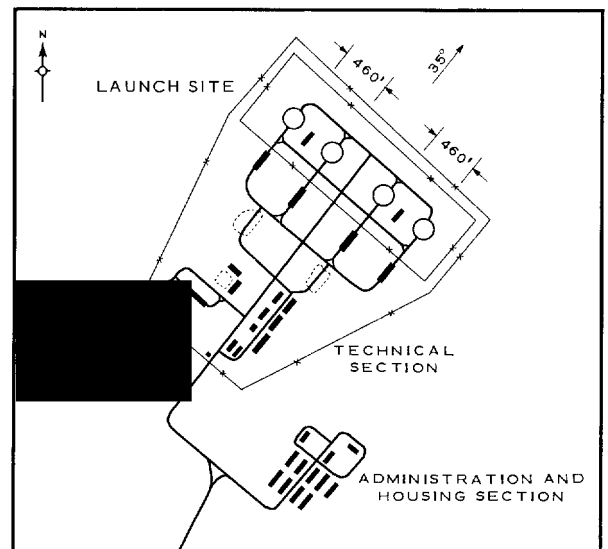
REFERENCES

MAPS: AMS, N501-NN 35-1
USATC-200, Sheet 0168-8

25X1D



25X1D



25X9

FIGURE 1. UKMERGE MRBM LAUNCH AREA NO 1.

NPIC H-7369 (2/64)

- 1 -

TOP SECRET RUFF

NPIC R-97/64

LAUNCH AREA NO 2 (TYPE I)

COORDS: 55-11-15N 24-42-30E

25X1A

ASSOC AREAS: Launch Area No 1, 3.9 nm to SW;

Ukmerge Fixed Field-Type Site, 3.9 nm to S

TDI NAME: Ukmerge Launch Site

LOCATION: 4.7 nm SW of Ukmerge

25X1D

FIRST APPEARED:

25X1D

CONSTRUCTION STATUS: Complete
Launch Site

TERRAIN: Rolling VEGETATION: Wooded

SECURITY: Double fence

PADS: Four circular pads (approx 180' diameter) with 490' separation and oriented on an azimuth of 215°

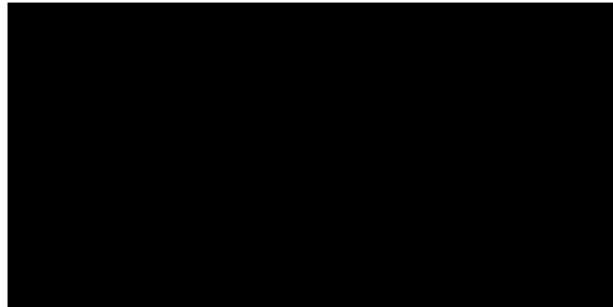
READY BLDGS: Two drive-through type (size undetermined)

Site Support Facility

TECHNICAL SECTION: Located 850' NNE of launch site. Consists of 3 loop roads with several clearings located along 2 of the loop roads. Third loop road has the following bldgs along it: 3 bldgs approx 150' x 65', one bldg, and one possible bldg of undetermined size.

ADMINISTRATION & HOUSING SECTION: Lo-

cated 2,200' NE of launch site. Contains at least 10 barracks-type bldgs (approx 145' x 45'), one bldg approx 60' x 60', and several cleared areas.



25X9

Rail-to-Road Transfer Point

Probably the facilities at Ukmerge or Jonava. Roads to launch area from both cities are improved.

Other MRBM Activity Within 25 NM

Radius of Launch Area

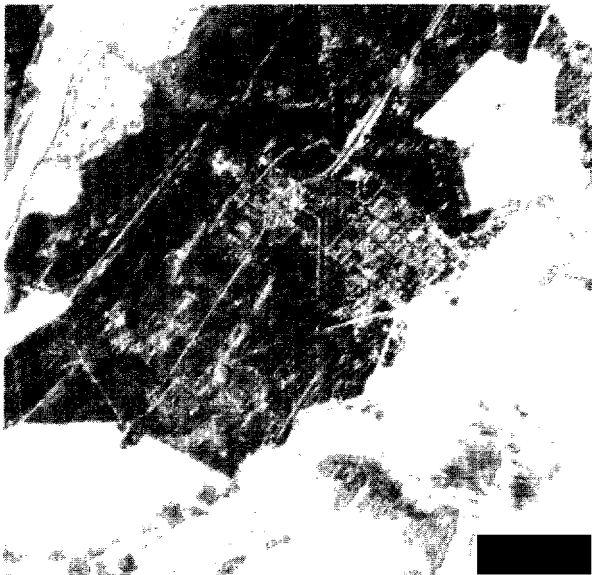
Jonava MRBM Complex is located 22.0 nm to the SW

REFERENCES

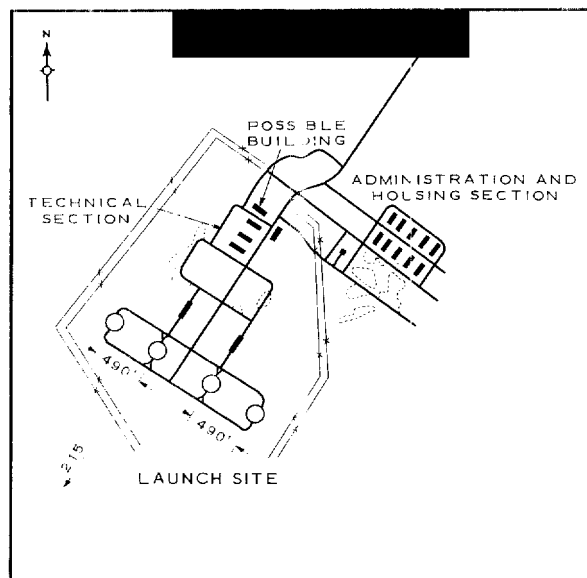


25X1D

MAPS: AMS, N501-NN 35-1
USATC-200, Sheet C-68-8



25X1D



25X9

FIGURE 2. UKMERGE MRBM LAUNCH AREA NO 2.

NPIC H-7870 (2/64)

UKMERGE FIXED FIELD-TYPE LAUNCH SITE

COORDS: 55-07-15N 24-43-45E
BE NO: (Not available)
ASSOC AREAS: Launch Area No 1, 2.9 nm to WNW; Launch Area No 2, 3.9 nm to N
TDI NAME: (Not available)
LOCATION: 8.2 nm SSW of Ukmerge
FIRST APPEARED: [REDACTED]
CONSTRUCTION STATUS: Undetermined

Launch Site

TERRAIN: Rolling VEGETATION: Wooded
SECURITY: None discernible
COMPONENTS: Site consists of an outer loop road, an internal connecting road, and a single launch pad clearing. Just E of the launch site are 2 additional cleared areas which are considered candidates for launch pad clearings. They appear to have a square or slightly rec-

tangular outline and are connected to the launch site by a poorly defined road network. The site is connected to Ukmerge Launch Areas No 1 and 2 by improved roads. It is oriented on an azimuth of 35°.

Rail-to-Road Transfer Point

Probably the facilities at Ukmerge or Jonava. Roads to Field Site from both cities are improved.

Other MRBM Activity Within 25 NM

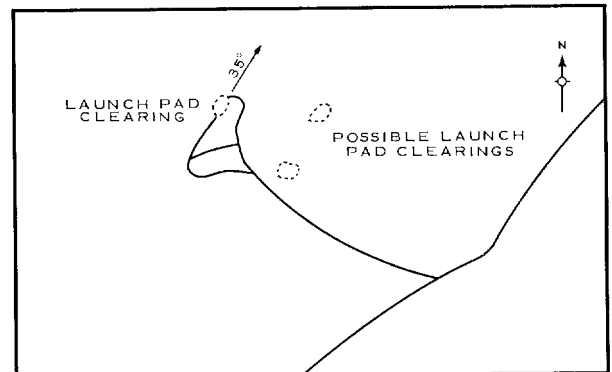
Radius of Launch Area

Jonava MRBM Complex is 20.8 nm to the SW

REFERENCES

MAPS: AMS, N501-NN 35-1
USATC-200, Sheet 0168-8

25X1D



NPIC H-7971 (2/64)

FIGURE 3. UKMERGE FIXED FIELD-TYPE LAUNCH SITE.

TOP SECRET