

TOP SECRET

Copy 106

2 Pages

NPIC/R-150/64

February 1964



PHOTOGRAPHIC INTERPRETATION REPORT

MILITARY TRAINING AREAS OSIPOVICH, USSR BELORUSSIAN MD



CIA



DIA

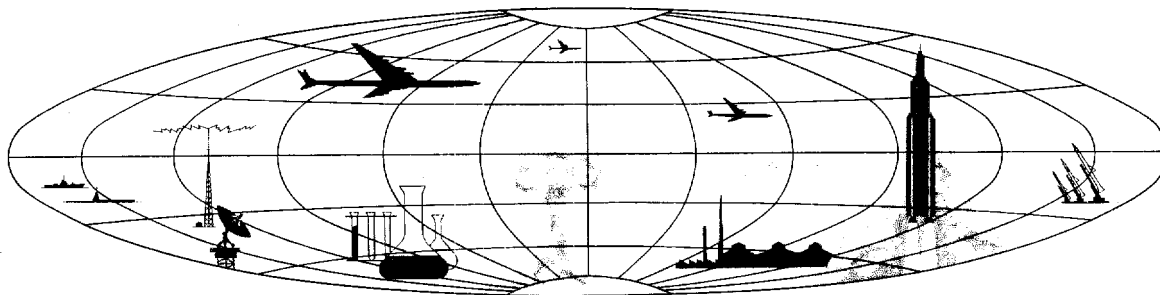
Handle Via **TALENT - KEYHOLE** Control Only

WARNING

DECLASS REVIEW BY NIMA / DoD

This document contains classified information affecting the national security of the United States within the meaning of the espionage laws U. S. Code Title 18, Sections 793 and 794. The law prohibits its transmission or the revelation of its contents in any manner to an unauthorized person, as well as its use in any manner prejudicial to the safety or interest of the United States or for the benefit of any foreign government to the detriment of the United States. It is to be seen only by personnel especially indoctrinated and authorized to receive TALENT-KEYHOLE information. Its security must be maintained in accordance with KEYHOLE and TALENT regulations.

NATIONAL PHOTOGRAPHIC INTERPRETATION CENTER



TOP SECRET

GROUP 1
Excluded from automatic
downgrading and declassification

MILITARY TRAINING AREAS
OSIPOVICH, USSR
BELORUSSIAN MD

Training Area A

25X1A

This 15,420-acre installation (Osipovichi Army Training Area NW [REDACTED]) is located 7 miles (11.1 kilometers) west of Osipovichi at 53-17N 028-28E (Figure 1). Facilities include a tracked-vehicle driver training course, and a moving target tank firing range with a target distance of 4,100 feet (from static firing line to target) and six 2,800-foot firing lanes. Portions of the training area other than the above appear lightly utilized.

Training Area B

This installation covers approximately 560 acres and is located one mile (1.6 kilometers) southeast of Osipovichi at 53-16N 028-40E.

It contains a wheeled-vehicle driver training course and open areas for combat training.

A comparative study of KEYHOLE photography from [REDACTED] revealed that at both areas activity was consistently heavy during the summer with little activity during the winter. No expansion of either area has been observed. Both have good access roads but no direct rail service.

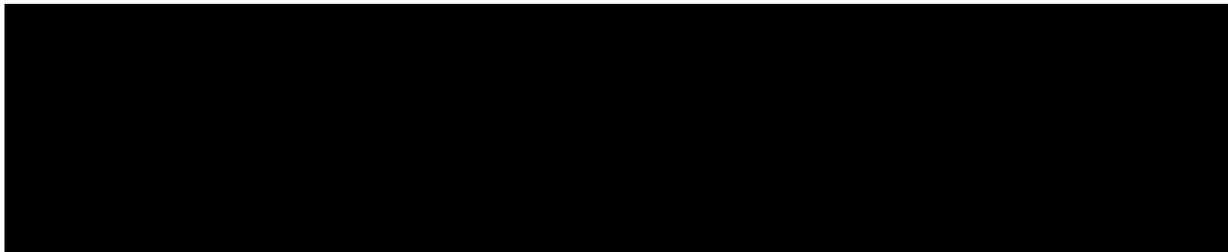
25X1D

No artillery firing positions or impact areas, bivouac areas, tent camps, engineer training or water-crossing training sites, or airborne or air transportability training facilities were observed.

REFERENCES

PHOTOGRAPHY

25X1D



MAPS OR CHARTS

ACIC. US Air Target Chart, Series 200, Sheet 0168-20HL, 2d ed, Oct 62, scale 1:200,000 (SECRET)

DOCUMENTS

OACSI, Army. PIB-TK-28-63, Osipovichi Military Complex, USSR, 18 Apr 63 (TOP SECRET RUFF)

REQUIREMENT

DIAXX 63-99 (partial answer)

NPIC PROJECT

J-446/63

NPIC/R-150/64

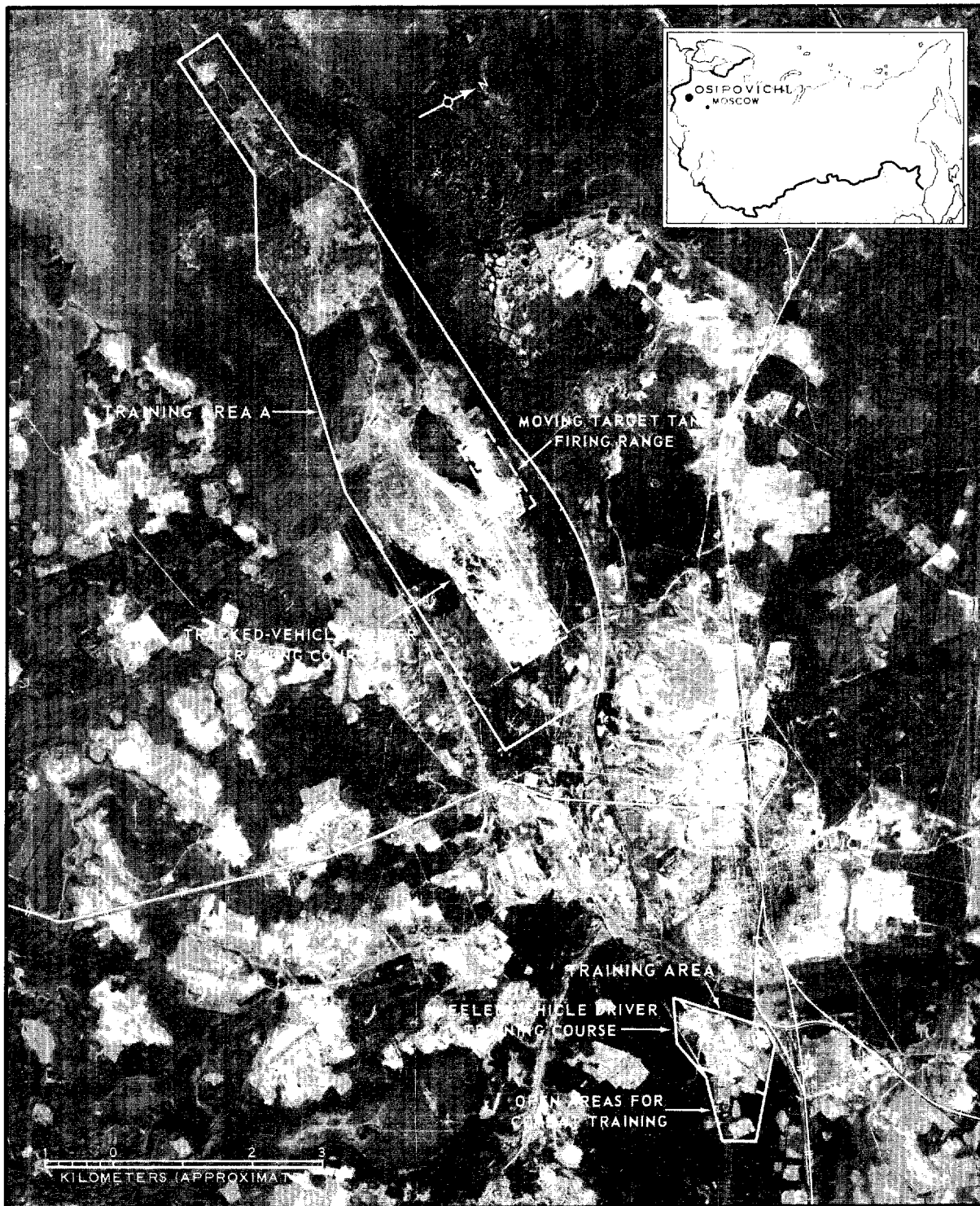


FIGURE 1. MILITARY TRAINING AREAS, OSIPOVICH, USSR

TOP SECRET

Approved For Release 2001/03/03 : CIA-RDP78B04560A002100010089-8

TOP SECRET

Approved For Release 2001/03/03 : CIA-RDP78B04560A002100010089-8