



PHOTOGRAPHIC INTERPRETATION REPORT

SEVEROMORSK NAVAL BASE SEVEROMORSK, USSR



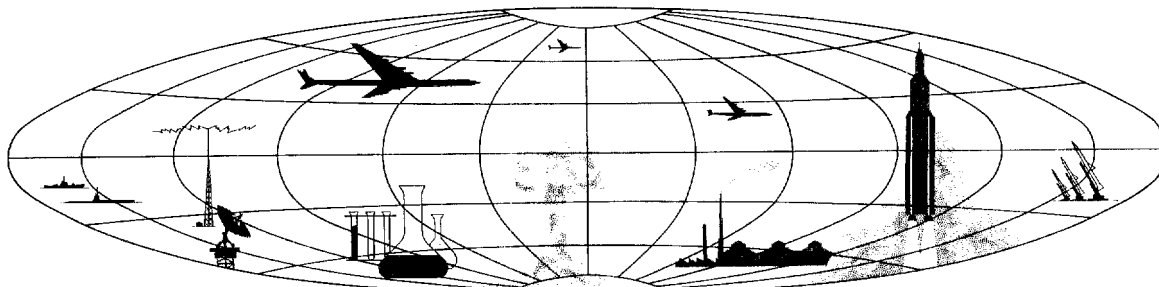
CIA



DIA



NATIONAL PHOTOGRAPHIC INTERPRETATION CENTER



Declass Review by NGA/DOD

25x1

SEVEROMORSK NAVAL BASE, SEVEROMORSK, USSR

25X1A INTRODUCTION

25X1A

Severomorsk Naval Base [redacted] is situated at the head of Vayenga Bay on the southeast shore of Kolskiy Bay one nautical mile (nm) northeast of Severomorsk and 10 nm northeast of Murmansk at 69-05N 033-25E (Figure 1).

25X1A

The Severomorsk Naval Complex (Figure 2) consists of: 1) Severomorsk Naval Base, 2) Severomorsk Petroleum Storage Kolskiy Bay [redacted] at 69-04-45N 033-25-47E, a support area for the naval base, 3) the naval base storage area, 4) the naval base housing

area, 5) Severomorsk Naval Headquarters Submarines Northern Fleet [redacted] probably located at 69-04-25N 033-25-15E, 6) Severomorsk Naval Headquarters Northern Fleet [redacted] at 69-04-24N 033-25-46E, 7) Severomorsk Petroleum Storage Kolskiy Bay East [redacted] at 69-05-22N 033-27-43E, 8) Severomorsk Naval Missile Support Facility Okalna [redacted] at 69-05-30N 033-27-30E, 9) Severomorsk Naval Missile Storage [redacted] at 69-05-20N 033-27-03E, 10) Naval Munitions Storage

25X1A

25X1A

25X1A

25X1A

25X1A

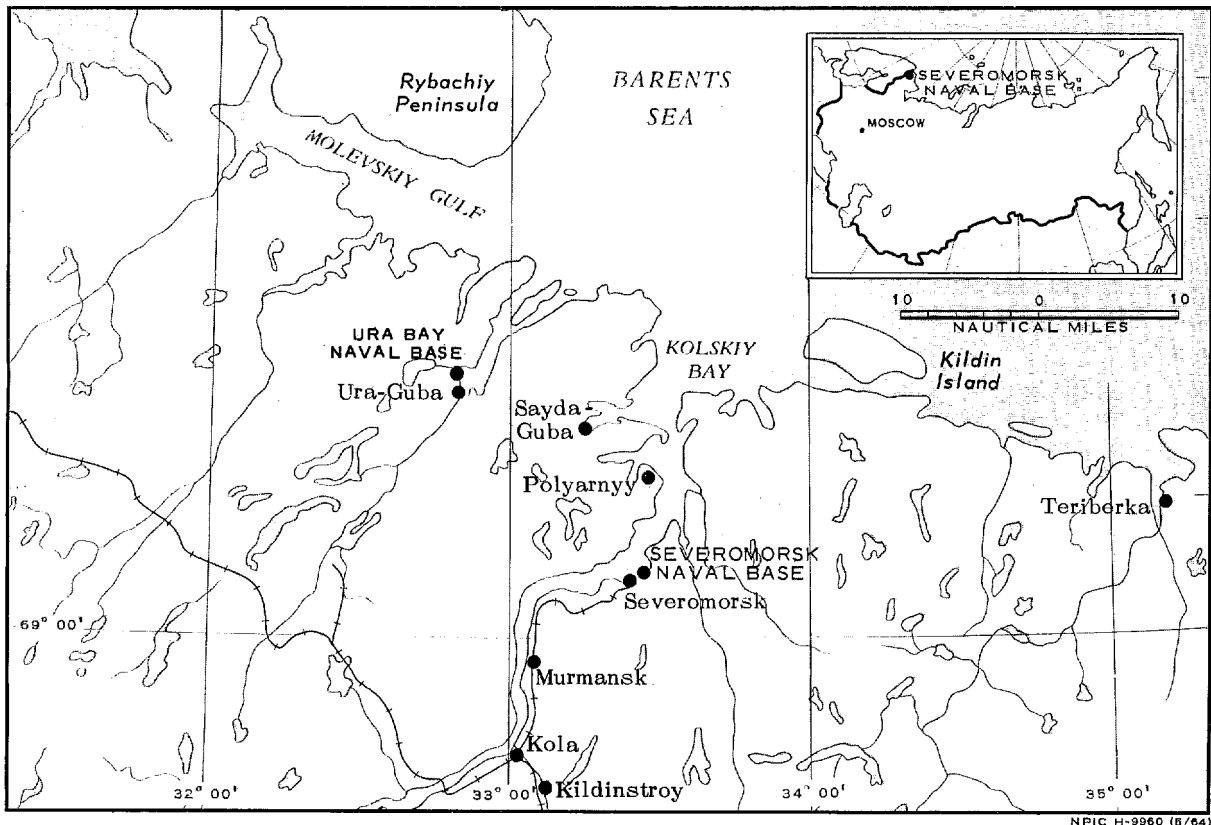


FIGURE 1. GENERAL LOCATION MAP.

NPIC/R-304/64

Depot at 69-09-50N 033-28-50E and 11) pos-

2 consist primarily of logistics and residential areas.

Other naval associated activities in the immediate area which are not indicated on Figure

25X1C

NAVAL BASE

Severomorsk Naval Base facilities include eight piers, two quays, a small boat landing, support, storage and housing areas.

Operations Area. The eight piers are road served (Area 1, Figure 2). Piers I, II and VII are L-head piers 230 by 40 feet*, 230 by 15 feet and 200 by 15 feet on the head. Piers IV, V and VIII have rock-filled approaches and extensions of 605 by 35 feet. Pier III has a rock-filled approach with an extension of 280 by 35 feet. Pier VI is a finger pier 380 by 10 feet. The small boat landing (IX) has a rock-filled approach with a 45-foot extension and is 40 by 30 feet on the head.

The quays are 800 and 735 feet long. Other facilities in this area include two barracks containing 45,200 square feet of floor space and fifteen miscellaneous support buildings.

Support Area. Facilities (Area 2, Figure 2) include Severomorsk Petroleum Storage Kolskiy Bay (Area 2A, Figure 2) with a rail-served walled area containing two semiburied POL

*Dimensions in this report are accurate to within 5 feet.

tanks 45 feet in diameter and a bunkered POL reservoir 75 by 75 feet, a thermal power plant (Area 2B, Figure 2) 145 by 60 feet with associated coal storage, three two-story barracks containing 36,000 square feet of floor space, 31 storage/support buildings and six buildings in a construction area.

Storage Area. Facilities (Area 3, Figure 2) consist of 52 storage buildings with approximately 488,000 square feet of floor space, one two-story barracks containing 32,000 square feet, two H-shaped administration buildings containing 22,500 square feet, one T-shaped administration building with 29,500 square feet and nine miscellaneous buildings.

Housing Area. Facilities (Area 4, Figure 2) consist of five two-story barracks containing 120,000 square feet of floor space, two T-shaped administration buildings with 23,500 square feet, an L-shaped building with 8,300 square feet, five storage buildings with 26,600 square feet, two probable storage tanks, two vehicle sheds and 12 miscellaneous buildings.

SEVEROMORSK NAVAL HEADQUARTERS SUBMARINES NORTHERN FLEET (PROBABLE LOCATION)

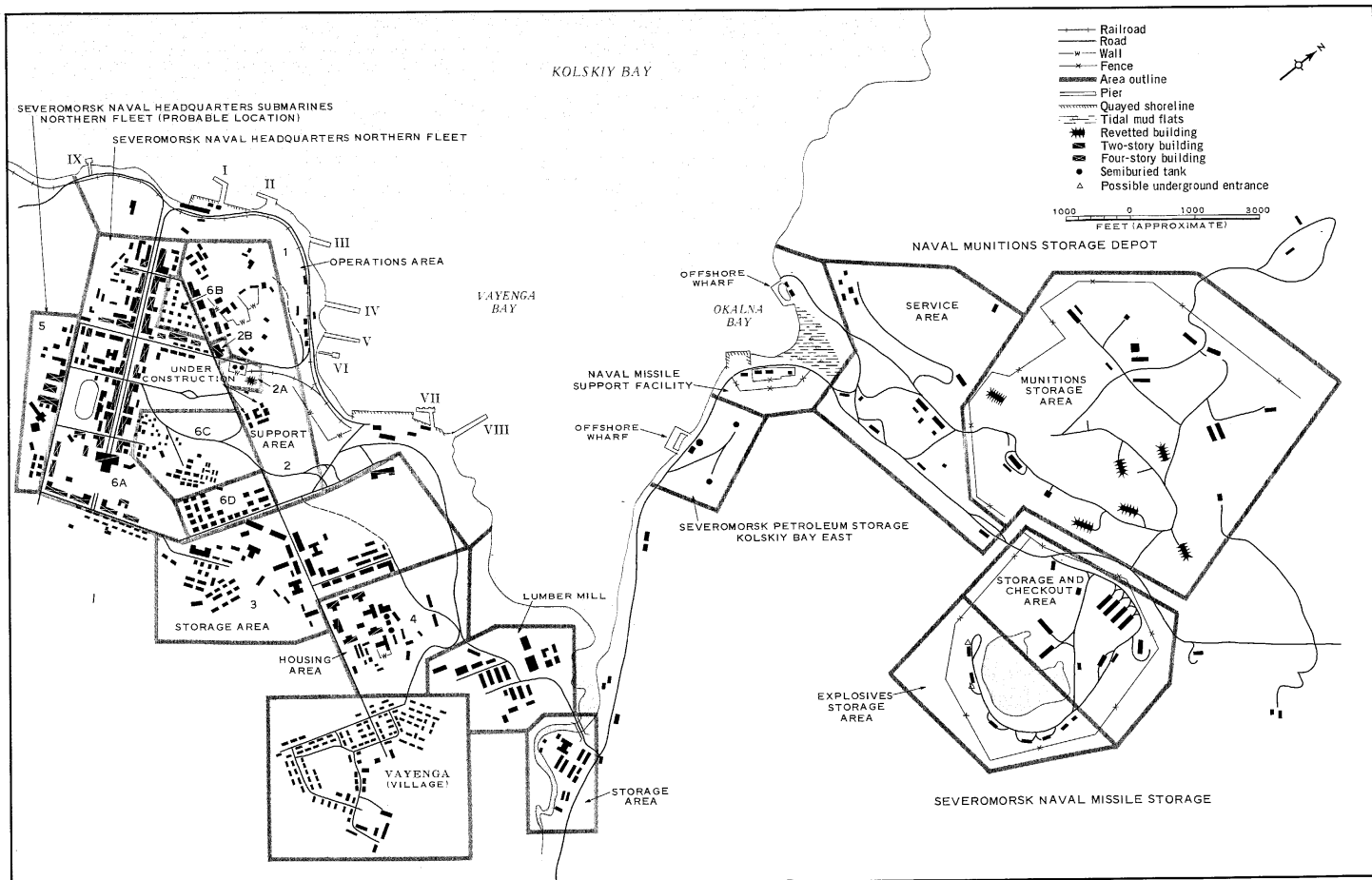
Three four-story administration buildings with 217,000 square feet of floor space, nine

single dwellings and nine storage/support buildings are located in this area (Area 5, Figure 2).

SEVEROMORSK NAVAL HEADQUARTERS NORTHERN FLEET

Facilities consist of a two-story administration building, 29 four-story barracks/train-

ing buildings, five two-story administrative-type buildings, 43 miscellaneous support buildings



NPIC/R-304/64

and two probable vehicle sheds (Area 6A, Figure 2).

Other facilities (Area 6B, Figure 2) consist of 18 single dwellings and one support-type building.

Facilities in Area 6C are 50 single dwellings and one multistory support-type building.

Facilities in Area 6D are 19 duplex-type dwellings, four storage buildings and three small miscellaneous buildings.

SEVEROMORSK PETROLEUM STORAGE KOLSKIY BAY EAST

Facilities include one offshore wharf, 295 by 95 feet on the head with 180- by 20-foot approaches, three semiburied POL tanks 65 feet in diameter and a small support building.

A lumber mill, a small storage area and the village of Vayenga are associated with the naval base.

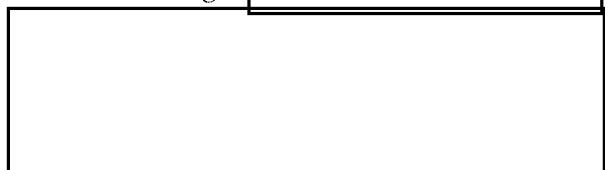
NAVAL MISSILE SUPPORT FACILITY

The Severomorsk Naval Missile Support Facility Okalna is located on the south shore of Okalna Bay at 69-05-30N 033-27-30E.

The facility was built between [redacted] concurrently with the Naval Missile Storage. The facility is fenced; however, it is traversed by the coastal road which runs between the wharf area and an inner fenced area.

The wharf area contains a quay 350 feet long, a crane and a support building. Missile submarines have been seen at the quay.

The inner fenced area is built on a ledge at the base of a cliff and secured by a fence, lights and watch towers. It contains three buildings including an arch-roofed structure from 80 to 90 by 30 feet and a high, industrial-type 50- by 30-foot building. [redacted]



NAVAL MISSILE STORAGE

The Severomorsk Naval Missile Storage is located 1.5 nm east-northeast of the naval base at 69-05-20N 033-27-03E. The facility was built between [redacted] It is separately fenced and contains two sections.

Storage and Checkout Area. The storage and checkout area contains four 210- by 50-foot drive-in storage-type buildings set parallel to each other with V-shaped driveways, a 100- by

60-foot drive-through building, two 240- by 40-foot drive-in storage buildings and five other buildings.

Explosives Storage Area. This area contains five 160- by 50-foot storage buildings cut into the hillside. Two possible underground entrances adjoin two of the buildings. Two other buildings are located in the area.

NAVAL MUNITIONS STORAGE DEPOT

The naval munitions storage depot immediately north of the missile facilities was in a late stage of construction in [redacted]

It consists of a wharf area, a munitions storage area and a service area.

25X1D

NPIC/R-304/64

25X1D

25X1D Wharf Area. The wharf area is at 69-05-40N 033-27-20E on the north shore of Okalna Bay. It consists of an offshore wharf [redacted] feet with two approaches, each 25 feet wide, two cranes and two sheds. Destroyers and tenders have been seen here.

and contains six 160- by 50-foot bunkers with 42,000 square feet of interior floor space, eight inert [redacted]-foot storage bunkers with 66,000 square feet total floor space and five other buildings.

Munitions Storage Area. The munitions storage area at 69-05-50N 033-28-50E is fenced

Service Area. The service area contains 18 buildings including at least two barracks.

REFERENCES

25X1D

[redacted]

MAPS OR CHARTS

25X1C

[redacted]

DOCUMENTS

25X1C

[redacted]

25X9

NPIC. R-98/63, *Naval Missile Facilities, USSR*, Jun 63 (TOP SECRET [redacted])

25X1

[redacted]

REQUIREMENT

C-C14-81,001 (partial answer)

NPIC PROJECT

N-119/64

TOP SECRET

Approved For Release 2006/01/17 : CIA-RDP78B04560A002200010064-4

Approved For Release 2006/01/17 : CIA-RDP78B04560A002200010064-4
TOP SECRET