

SECRET

NPIC/R-1261/64

June 1964

25X1

PHOTOGRAPHIC INTERPRETATION REPORT

BOMB DAMAGE ASSESSMENT  
KHANG KHAI MILITARY COMPLEX AND  
BAN BAN MILITARY CAMP, LAOS  
MISSION LUCKY DRAGON

25X1

25X1



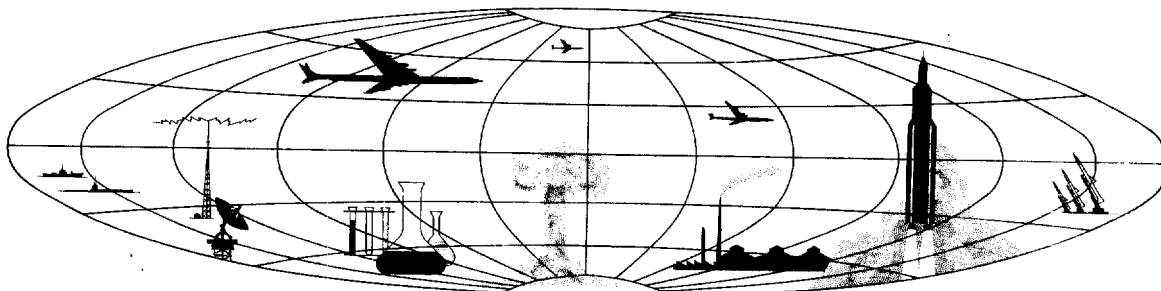
CIA



DIA

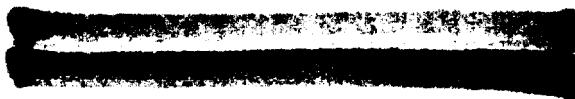
Declass Review by  
NIMA/DOD

NATIONAL PHOTOGRAPHIC INTERPRETATION CENTER



SECRET

25X1



W A R N I N G

This document contains information affecting the national defense of the United States, within the meaning of Title 18, sections 793 and 794, of the U.S. Code, as amended. Its transmission or revelation of its contents to or receipt by an unauthorized person is prohibited by law.

SECRET

25X1

NPIC/R-1261/64

PREFACE

The following bomb damage assessment report is based on a review of post-strike Mission LUCKY DRAGON [ ] dated [ ] covering the Plaine des Jarres area, Laos.

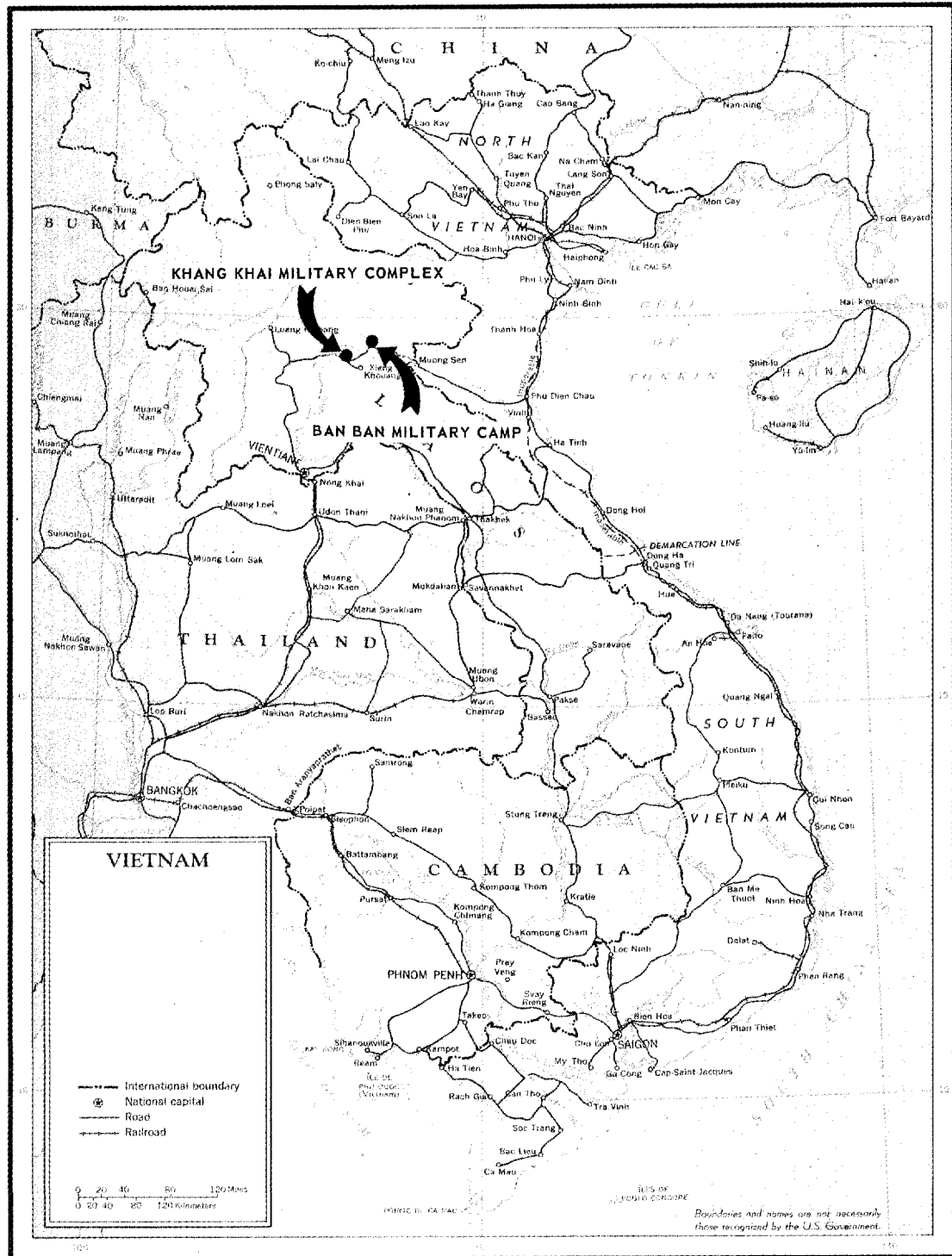
25X1

The bomb crater and rocket damage tabulation for the Khang Khai military complex is based upon distance and direction from a road junction of route 7 and an unnumbered route, located in the center of the Khang Khai military complex at 19-28-55N 103-15-25E, UTM UG174551. Pre-strike and post-strike photos on Khang Khai are Attachments 1 and 2, respectively. Pre-reported strike and post-reported strike photos on Ban Ban are Attachments 3 and 4, respectively.

SECRET

25X1

NPIC/R-1261/64



LOCATION MAP

SECRET


Approved For Release 2003/01/28 : CIA-RDP78B04560A003400010037-1

25X1

NPIC/R-1261/64

Khang Khai Military Complex is located along route 7 in the Plaine des Jarres area. It consists of a military barracks area, a military headquarters area, a small civilian community, and several other miscellaneous areas. In and around the military complex are numerous strongpoints, AW positions, training areas, and miscellaneous trenching. See attachment 1.

Khang Khai Military Complex was reportedly attacked by one T-28-type aircraft on 11 June 1964; the amount of expended ordnance was, reportedly, one 250-pound bomb and 4 rockets, size unknown. Two large administration-type buildings in the military headquarters area were severely damaged, one by a blast from a bomb whose crater is rubble filled and one by fire, to the extent that they are probably unusable. In the military barracks area one administration-type building and 3 barracks were completely destroyed by fire, probably caused by rocket hits. One additional barracks has sustained some roof damage, but is probably still usable. No additional bomb craters have been identified, and there is no other apparent damage to other facilities or equipment within the complex. See attachment 2.

Damaged Building	Type	Damaged Area	% of Bldg	Distance	Direction
1	Barracks		100	2470	ENE
2	Barracks		100	2350	ENE
*3	Barracks		25	2250	ENE
4	Admin		100	2150	ENE
5	Barracks		100	1900	ENE
6	Admin	80 x 50 ft	50	625	NW
**7	Admin	55 x 50 ft	35	750	West

25X1

\* Observed roof damage.  
 \*\* Observed blast damage.

The village of Ban Ban and the Ban Ban Military Camp at 19-39N 103-33E were reviewed for evidence of reported bomb and rocket attack and the results were negative. See attachments 3 and 4. A review of the area along route 7 between Khang Khai Military Complex and Ban Ban Military Camp was also conducted with the following preliminary results:

SECRET

Approved For Release 2003/01/28 : CIA-RDP78B04560A003400010037-1

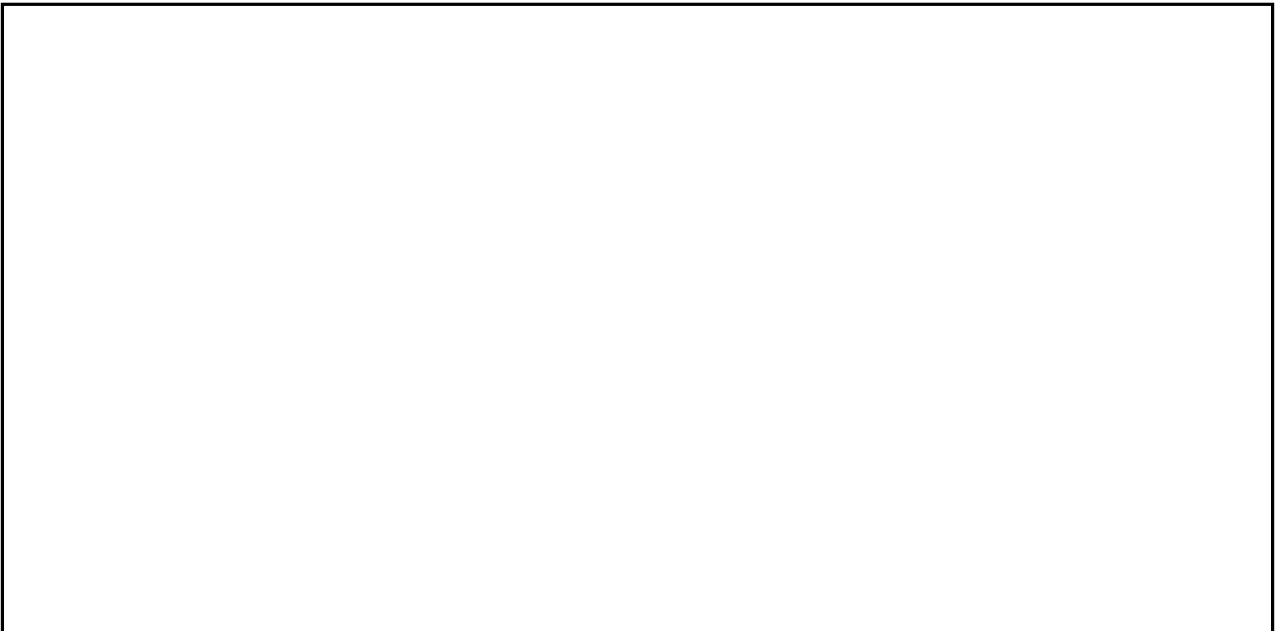
25X1

NPIC/R-1261/64

In the vicinity of Ban Ken, 19-35N 103-40E, and 6.7 nm ESE of Ban Ban, 8 small bomb craters are observed as follows from Ban Ken:

Two on northern edge, four are .2 nm ESE, and two are .4 ne ESE.

There was no apparent damage resulting from these bombs; however, their apparent objectives were occupied AAA positions and a road bridge on route 7 in the general vicinity of Ban Ken.



25X1

AMS Series L004, Sheet 5669-II, 1st ed (FE),  
Scale 1:50,000.

SECRET

25X1

SECRET

25X1

NPIC/R-1261/64

ATTACHMENT 1



KHANG KHAI MILITARY COMPLEX, LAOS

25X1

SECRET

25X1

SECRET

25X1

NPIC R-1261.64

ATTACHMENT 2



KHANG KHAI MILITARY COMPLEX, LAOS

25X1

SECRET

25X1

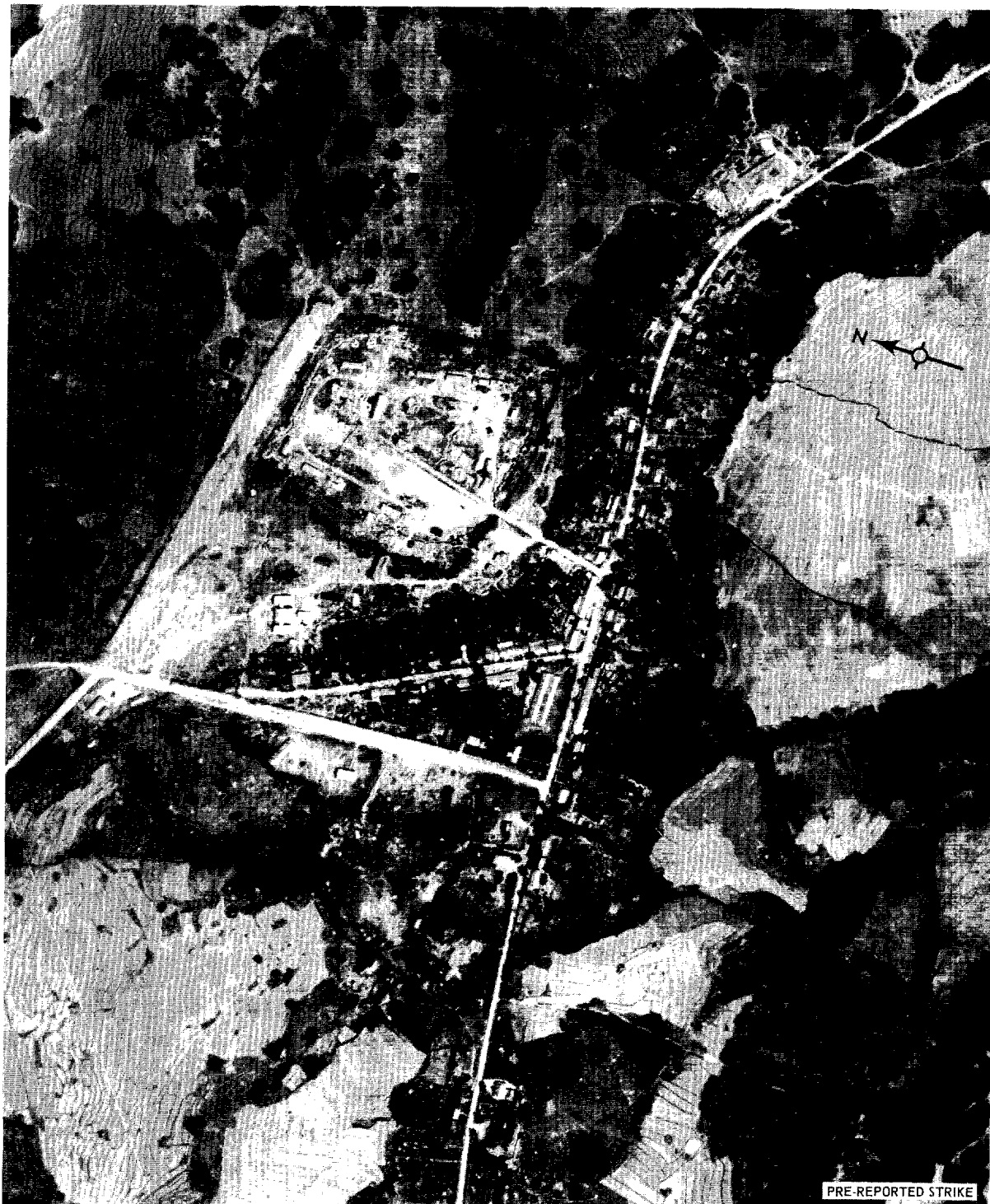


SECRET

Approved For Release 2003/01/28 : CIA-RDP78B04560A003400010037-1

25X1

NPIC/R-1261/64  
ATTACHMENT 3



PRE-REPORTED STRIKE

BAN BAN MILITARY CAMP, LAOS

25X1

Approved For Release 2003/01/28 : CIA-RDP78B04560A003400010037-1

SECRET

25X1



BAN BAN MILITARY CAMP, LAOS

25X1

Approved For Release 2003/01/28 : CIA-RDP78B04560A003400010037-1

Approved For Release 2003/01/28 : CIA-RDP78B04560A003400010037-1