

SECRET



NPIC/R-1492/64

September 1964

PHOTOGRAPHIC INTERPRETATION BRIEF

NATUNA AIRFIELD GREAT NATUNA ISLAND INDONESIA

25X1C

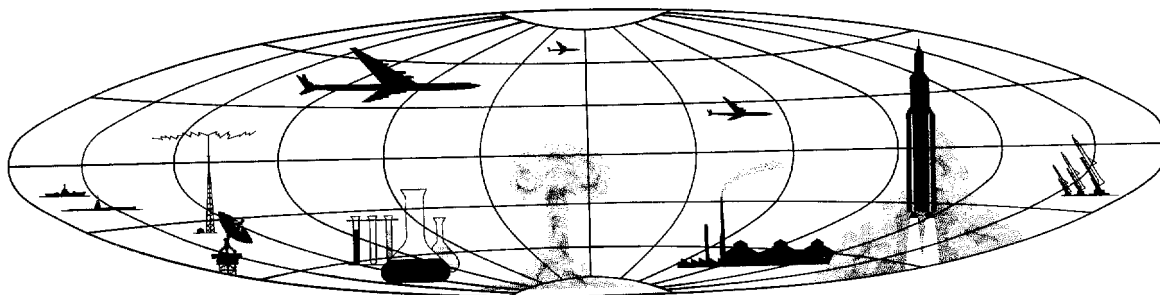


CIA



DIA

NATIONAL PHOTOGRAPHIC INTERPRETATION CENTER



25X1C

SECRET

GROUP 1
Excluded from automatic
downgrading and declassification



WARNING

This document contains information affecting the national defense of the United States, within the meaning of Title 18, sections 793 and 794, of the U.S. Code, as amended. Its transmission or revelation of its contents to or receipt by an unauthorized person is prohibited by law.

NATIONAL PHOTOGRAPHIC INTERPRETATION CENTER PHOTO INTERPRETATION BRIEF

| | | | |
|---|-------------------------------|------------|-----------------------------------|
| Title: Natuna Airfield Great Natuna Island, Indonesia | Geo Coords: 03-54N 108-23E | [REDACTED] | Publication No: NPIC/R-1492/64 |
| | NPIC Target No: 861-1 | | Date: September 1964 |

Photo Data: Mission LEAD SEAT 6047, [REDACTED] (S/No Foreign [REDACTED])

References: AMS Series T503, Sheet NA 49-1, 1st ed, Mar 62 (U)
NPIC Project N-961/64 (USIB 68-64)

Natuna Airfield (Figure 1), 2.5 nm south of Ranai, consists of one 5,000- by 120-foot N/S graded coral, serviceable runway. Facilities include one small parking apron and a control tower, both east of the runway. The support area along the east edge of the field contains

one administration building, 2 possible mess-halls, one large barracks-type building, 4 duplex-type buildings, 3 small barracks-type buildings, and approximately 9 support buildings.

One apparently disabled C-130 is located midfield.

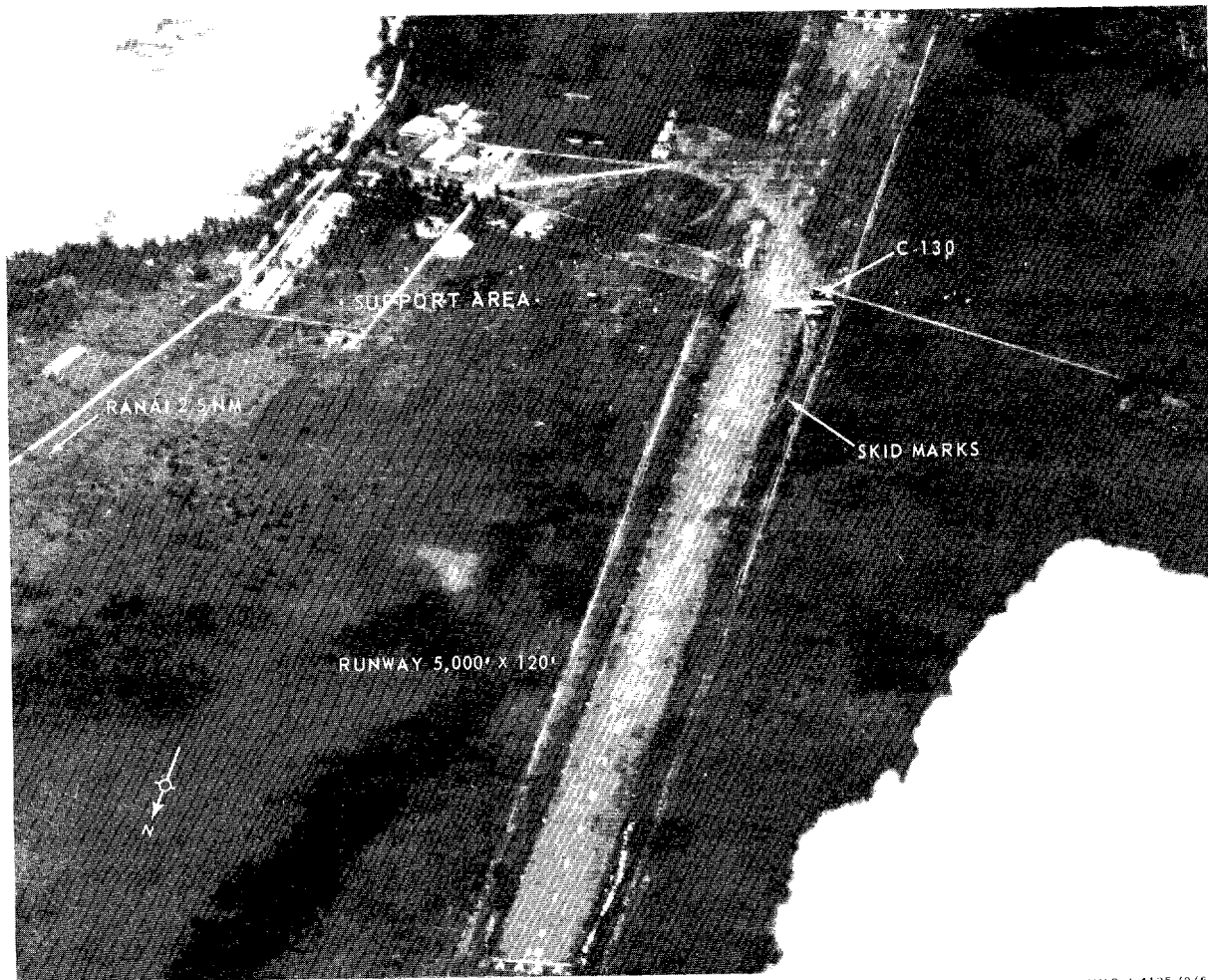


FIGURE 1. NATUNA AIRFIELD, GREAT NATUNA ISLAND, INDONESIA, [REDACTED]

NPIC J-4135 (9/64)

Approved For Release 2000/04/17 : CIA-RDP78B04560A003800010043-0
25X1C

Approved For Release 2000/04/17 : CIA-RDP78B04560A003800010043-0