



PHOTOGRAPHIC INTERPRETATION REPORT

SOVIET MILITARY ORDER OF BATTLE KIYEV MD

Declass Review by NIMA/DOD



CIA



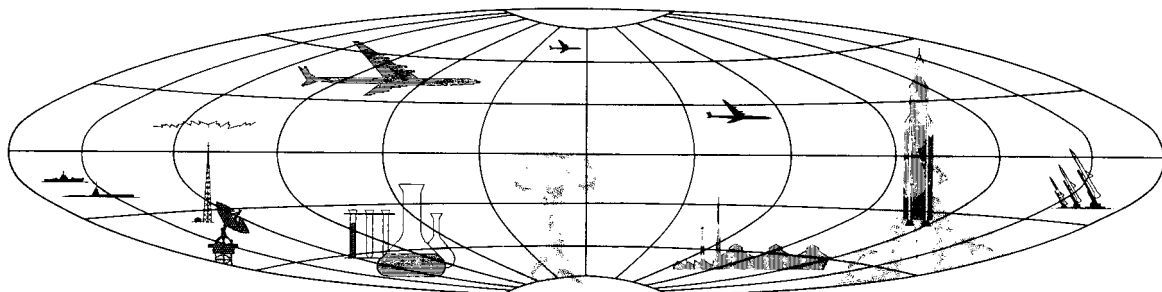
DIA

Handle Via **TALENT-KEYHOLE** Control Only

WARNING

This document contains classified information affecting the national security of the United States within the meaning of the espionage laws U. S. Code Title 18, Sections 793 and 794. The law prohibits its transmission or the revelation of its contents in any manner to an unauthorized person, as well as its use in any manner prejudicial to the safety or interest of the United States or for the benefit of any foreign government to the detriment of the United States. It is to be seen only by personnel especially indoctrinated and authorized to receive TALENT-KEYHOLE information. Its security must be maintained in accordance with KEYHOLE and TALENT regulations.

NATIONAL PHOTOGRAPHIC INTERPRETATION CENTER



~~TOP SECRET~~

GROUP 1
Excluded from automatic
downgrading and declassification

Handle Via
TALENT-KEYHOLE
Control System Only

TCS-10635/64
NPIC/R-5098/64

PREFACE

This report is one in a series on Soviet Ground Force and logistic installations being prepared for a DIA/CIA Panel. The series is being coordinated, published and disseminated by NPIC. The photographic analysis is being performed by the NPIC Photographic Analysis Group, the CIA Photographic Intelligence Division (NPIC), and the Production Center 1P1c (DIA). The photographic analysis for this particular report was performed by the NPIC Photographic Analysis Group.

In the interest of uniformity, the titles and letter designators for the facilities observed at these installations are identical with those appearing in the project requirement. When a specific facility is not observed both its title and letter designator are omitted in the report.

Titles and letter designators for the various facilities are as follows: (A) railroad service, (B) road service, (C) landing strips, (D) administrative and troop housing areas, (E) storage areas, (F) ammunition storage areas, (G) POL storage areas, (H) other buildings and facilities, (J) equipment storage/maintenance areas, (K) athletic fields, (L) small arms firing ranges, (M) driver training areas, (N) tank/assault gun firing ranges, (P) flat trajectory firing ranges, (Q) artillery emplacements (batteries), (R) infantry or combined arms field training area or courses, (S) special training facilities, (T) unidentified facilities or tracking activity.

Handle Via
TALENT-KEYHOLE

TOP SECRET CHESS RUFF

Handle Via
TALENT-KEYHOLE
Control System Only

TCS-10635/64
NPIC/R-5098/64

LOZOVAYA AMMUNITION DEPOT RAILROAD STATION NORTHEAST

(48-55N 036-22E)

LOZOVAYA, KHAROVSKAYA OBLAST, USSR

KIYEV MD

25X1A

AL No:

25X1C

COMOR No:

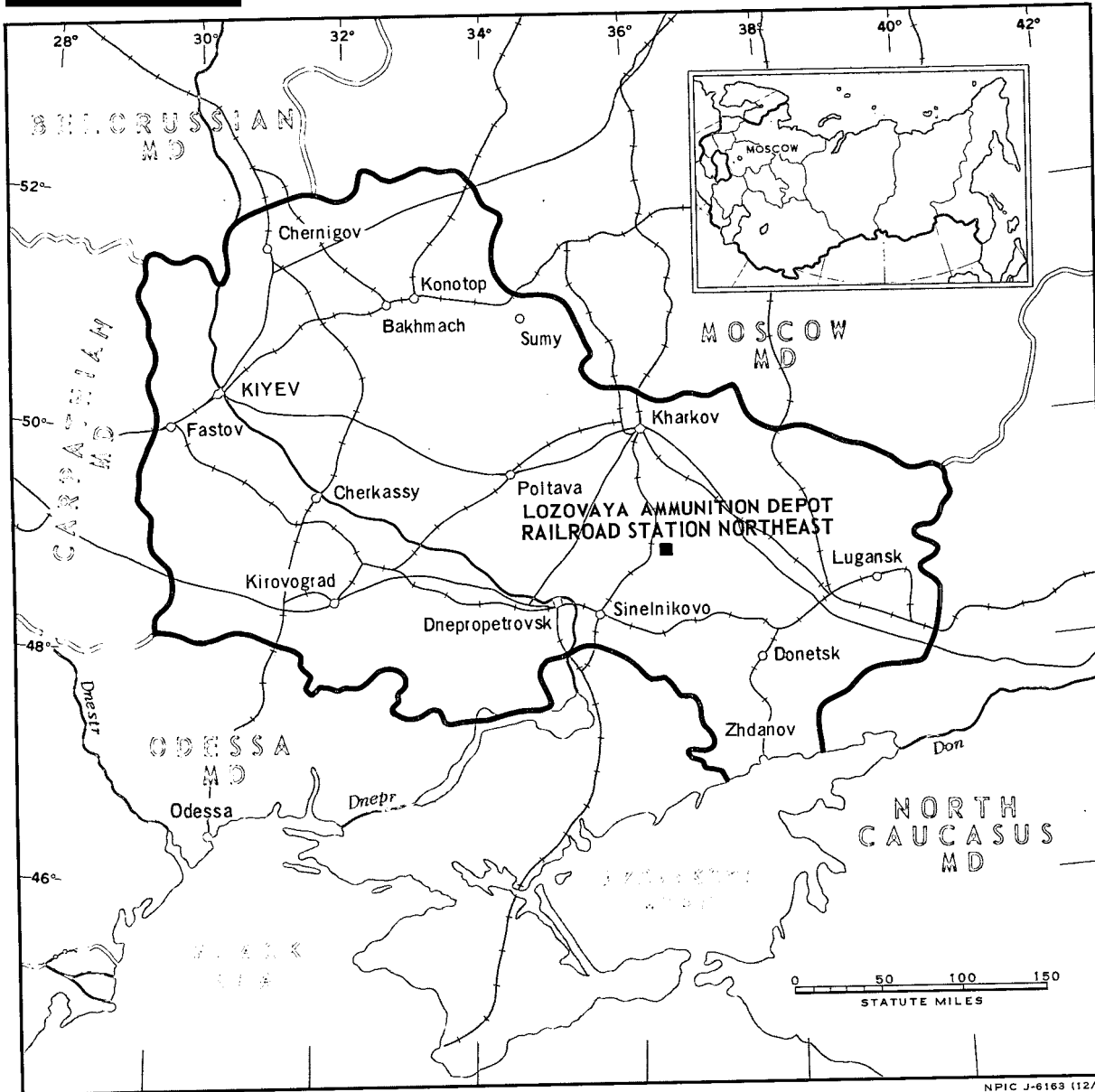


FIGURE 1. LOCATION OF LOZOVAYA AMMUNITION DEPOT RAILROAD STATION NORTHEAST.

Handle Via
TALENT-KEYHOLE
Control System Only

TOP SECRET CHESS RUFF

Handle Via
TALENT-KEYHOLE
Control System Only

TCS-10635/64
NPIC/R-5098/64

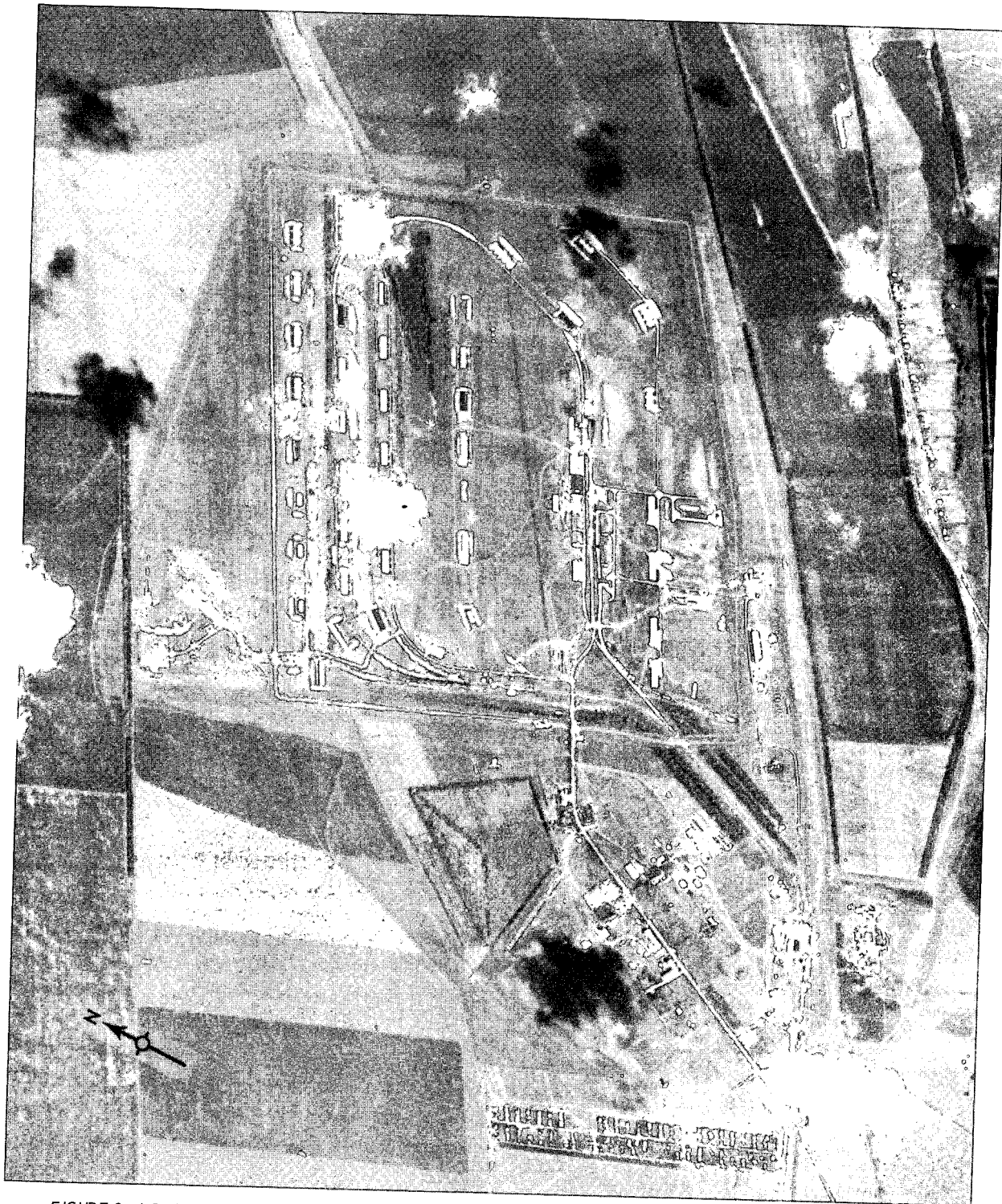


FIGURE 2. LOZOVAYA AMMUNITION DEPOT RAILROAD STATION NORTHEAST, LOZOVAYA, USSR, NPIC 1-5164 (12/64)

25X1D

Handle Via
TALENT-KEYHOLE
Control System Only

TOP SECRET CHESS RUFF

Handle Via
TALENT-KEYHOLE
Control System Only

TCS-10635/64
NPIC/R-5098/64

SUMMARY

Lozovaya Ammunition Depot Railroad Station Northeast is located 2 kilometers (km) northeast of Lozovaya (Figure 1).

The installation covers approximately 490 acres and contains 37 ammunition storage buildings, 3 earth-mounded probable drive-in buildings, 1 drive-through revetted building, and 14 support/storage buildings. A support area is located adjacent to the southwest edge of the storage area and contains 3 probable administration/barracks buildings and 15 support/

storage buildings (Figures 2 and 3).

The installation was covered on 1 TALENT mission of ██████████ KEYHOLE missions between ██████████. Changes between ██████████ included the addition of a ██████████ and 4 small buildings, the revetting of 5 buildings, and the earth mounding of 2 buildings. The installation appears active on all photography.

25X1D
25X1D
25X1D
25X9
25X9

DESCRIPTION OF INSTALLATION

Railroad Service

The installation is served by 5 rail spurs and contains a 150- by 35-foot trackside dock.

Road Service

A secondary road connects the installation to Lozovaya.

Administrative and Troop Housing Area

Area D contains 3 administration/barracks and 15 support/storage buildings. This is a support area for the ammunition storage facility.

Ammunition Storage Area

Area F contains 37 revetted ammunition

storage buildings, 14 support/storage buildings, 1 large earth-mounded probable drive-in building ██████████ located in a separately secured area on the northwest side of the ammunition storage area, 1 drive-through revetted building and 2 earth-mounded probable drive-in buildings located in the southern portion of the ammunition storage area. The ammunition storage area is doubly secured on 3 sides and singly secured on the side adjacent to the main road. Four small buildings were constructed, revetments were added around 5 buildings, and 2 drive-in buildings were earth mounded between ██████████

25X9

25X1D

Handle Via
TALENT-KEYHOLE
Control System Only

TOP SECRET CHESS RUFF

Handle Via
TALENT-KEYHOLE
Control System Only

TOP SECRET CHESS RUFF

TCS-10635/64
NPIC/R-5098/64

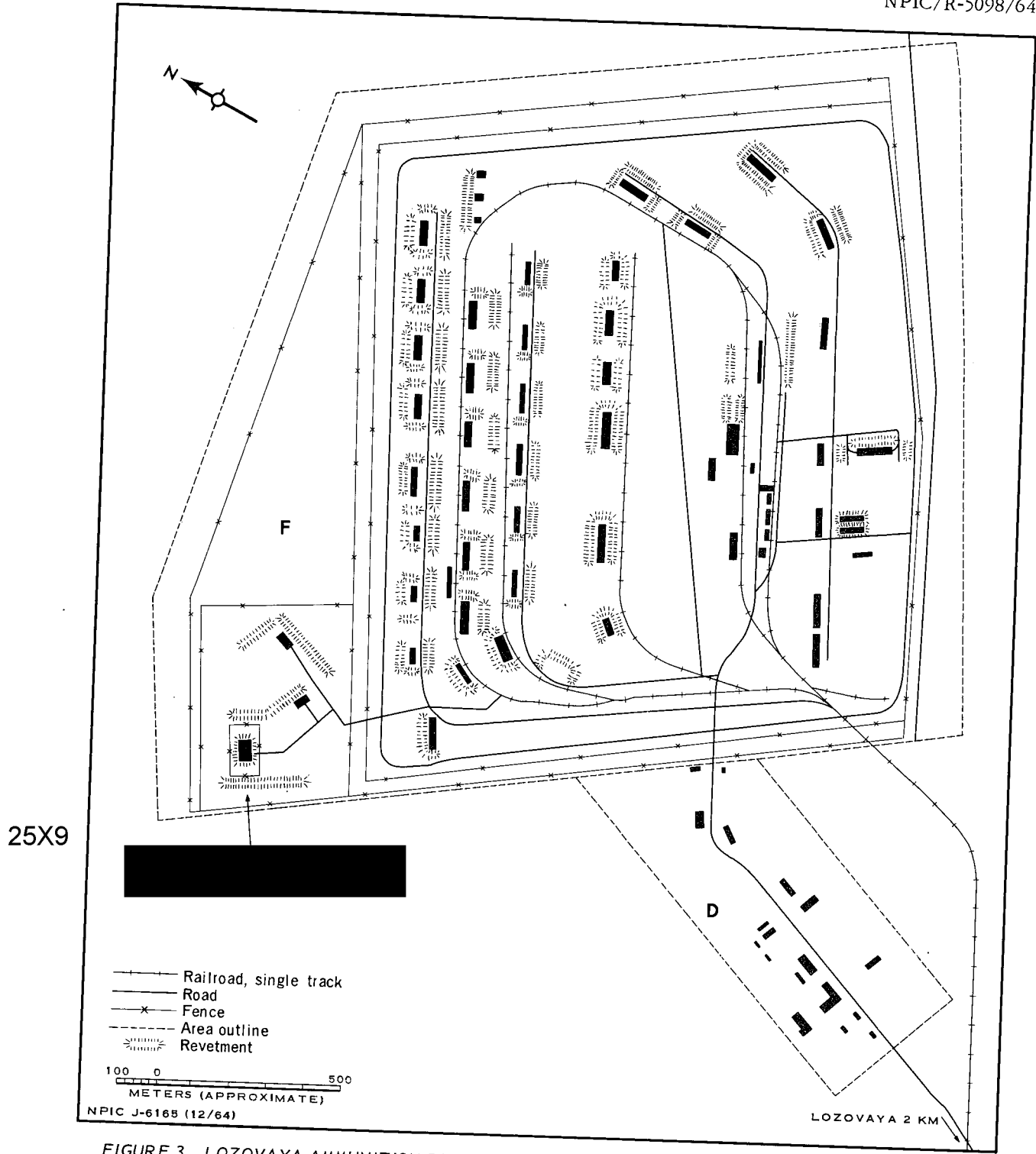


FIGURE 3. LOZOVAYA AMMUNITION DEPOT RAILROAD STATION NORTHEAST. Sketch compiled from

25X1D

Handle Via
TALENT-KEYHOLE
Control System Only

TOP SECRET CHESS RUFF

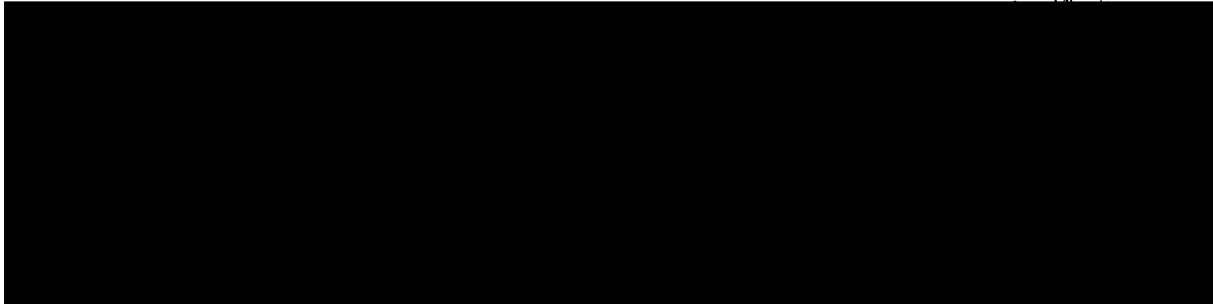
Handle Via
TALENT-KEYHOLE
Control System Only

TCS-10635/64
NPIC/R-5098/64

REFERENCES

PHOTOGRAPHY

25X1D



MAPS OR CHARTS

US Air Target Chart, Series 200, Sheet 0234-17HL, 2d ed, Apr 63 (SECRET)

DOCUMENTS

25X1C

NPIC. R-5115/64, *Arch-roofed Storage Buildings at Lozovaya Ammunition Depot*, Dec 64 (TOP SECRET CHESS RUFF)

REQUIREMENT

C-RR4-81,614 (partial answer)

NPIC PROJECT

11627/64

Handle Via
TALENT-KEYHOLE
Control System Only

TOP SECRET CHESS RUFF

~~TOP SECRET~~

~~TOP SECRET~~