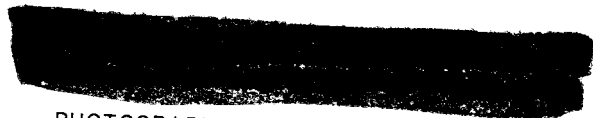


NPIC/R-5135/64
December 1964

TCS-10656/64
Copy 108
6 Pages



PHOTOGRAPHIC INTERPRETATION REPORT

SOVIET MILITARY ORDER OF BATTLE BALTIC MD

Declass Review by NIMA/DOD



CIA



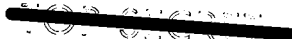
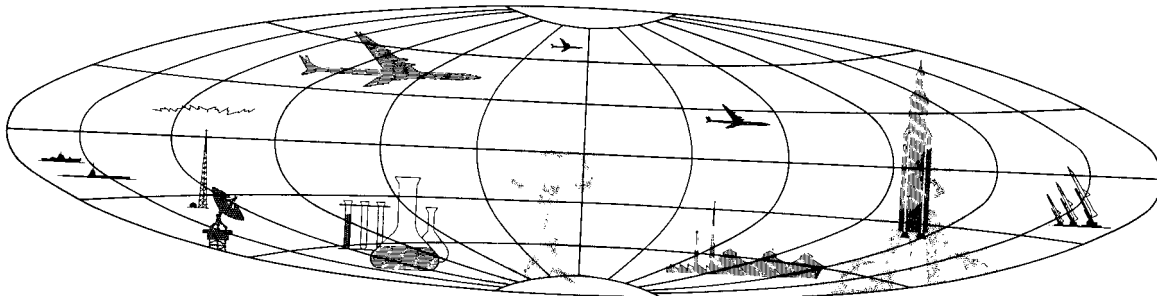
DIA

Handle Via **TALENT-KEYHOLE** Control Only

WARNING

This document contains classified information affecting the national security of the United States within the meaning of the espionage laws U. S. Code Title 18, Sections 793 and 794. The law prohibits its transmission or the revelation of its contents in any manner to an unauthorized person, as well as its use in any manner prejudicial to the safety or interest of the United States or for the benefit of any foreign government to the detriment of the United States. It is to be seen only by personnel especially indoctrinated and authorized to receive TALENT-KEYHOLE information. Its security must be maintained in accordance with KEYHOLE and TALENT regulations.

NATIONAL PHOTOGRAPHIC INTERPRETATION CENTER



GROUP 1
EXCLUDED FROM AUTOMATIC DOWNGRADING AND
DECLASSIFICATION

Handle Via
TALENT-KEYHOLE
Control System Only

TCS-10656/64
NPIC/R-5135/64

PREFACE

This report is one in a series on Soviet Ground Force and Logistic installations being prepared for a DIA/CIA Panel. The series is being coordinated, published and disseminated by NPIC. The photographic analysis is being performed by the NPIC Photographic Analysis Group, the CIA Photographic Intelligence Division (NPIC), and the Production Center 1P1c (DIA). The photographic analysis for this particular report was performed by the Production Center 1P1c.

In the interest of uniformity, the titles and letter designators for the facilities observed at these installations are identical with those appearing in the project requirement. When a specific facility is not observed both its title and letter designator are omitted in the report.

Titles and letter designators for the various facilities are as follows: (A) railroad service, (B) road service, (C) landing strips, (D) administrative and troop housing areas, (E) storage areas, (F) ammunition storage areas, (G) POL storage areas, (H) other buildings and facilities, (J) equipment storage/maintenance areas, (K) athletic fields, (L) small arms firing ranges, (M) driver training areas, (N) tank/assault gun firing ranges, (P) flat trajectory firing ranges, (Q) artillery emplacements (batteries), (R) infantry or combined arms field training areas or courses, (S) special training facilities, (T) unidentified facilities or tracking activity.

Handle Via
TALENT-KEYHOLE
Control System Only

Handle Via
TALENT-KEYHOLE
Control System Only

TCS-10656/64
NPIC/R-5135/64

KALININGRAD ARMY BARRACKS ROTHENSTEIN
(54-45N 020-33E)
KALININGRAD, LATVIYSKAYA OBLAST, USSR
BALTIC MD

25X1A

AL No:

25X1C

25X1A

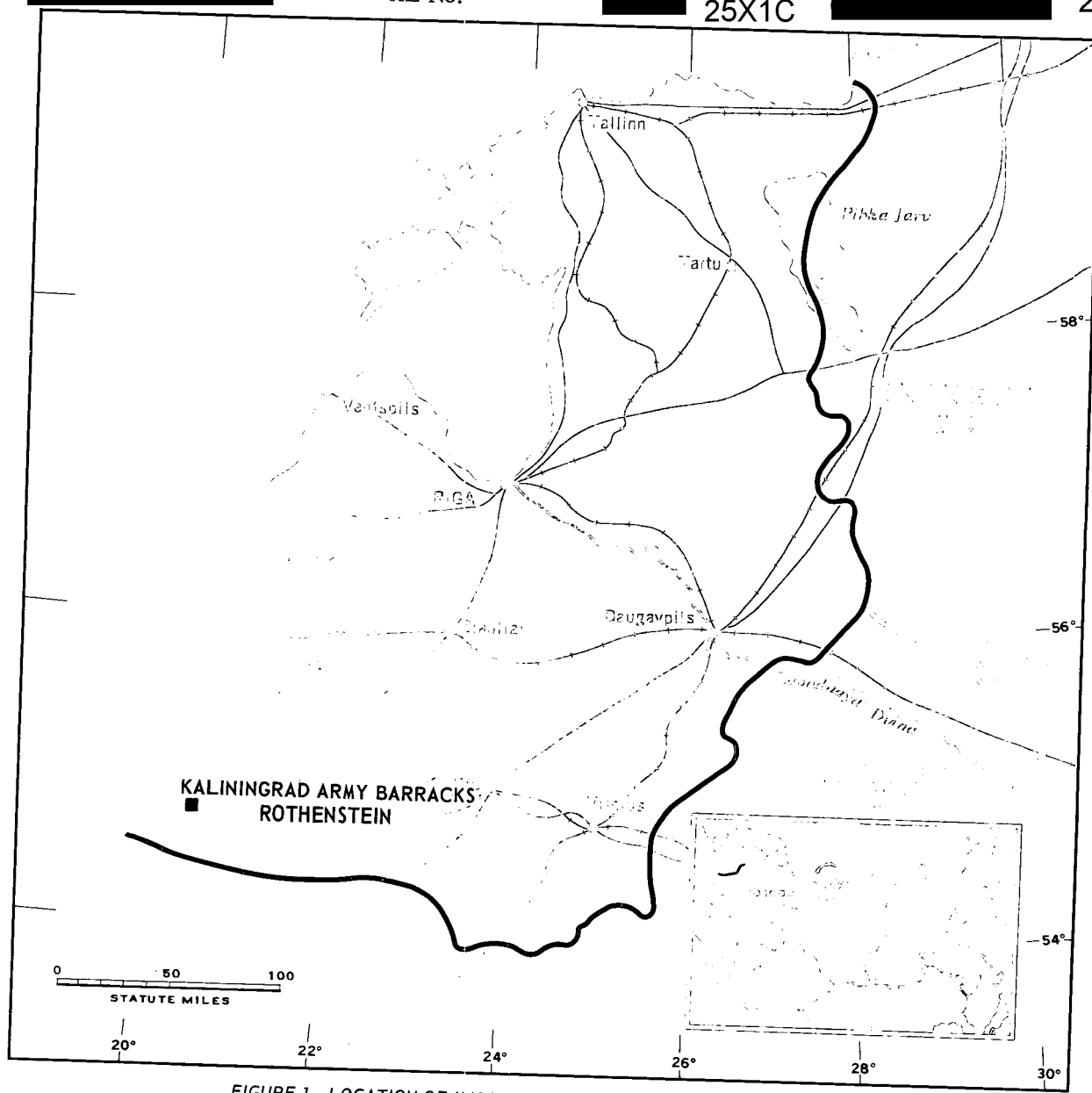


FIGURE 1. LOCATION OF KALININGRAD ARMY BARRACKS ROTHENSTEIN.

NPIC J-6288 (1/65)

Handle Via
TALENT-KEYHOLE
Control System Only

Handle Via
TALENT-KEYHOLE
Control System Only

TCS-10656/64
NPIC/R-5135/64

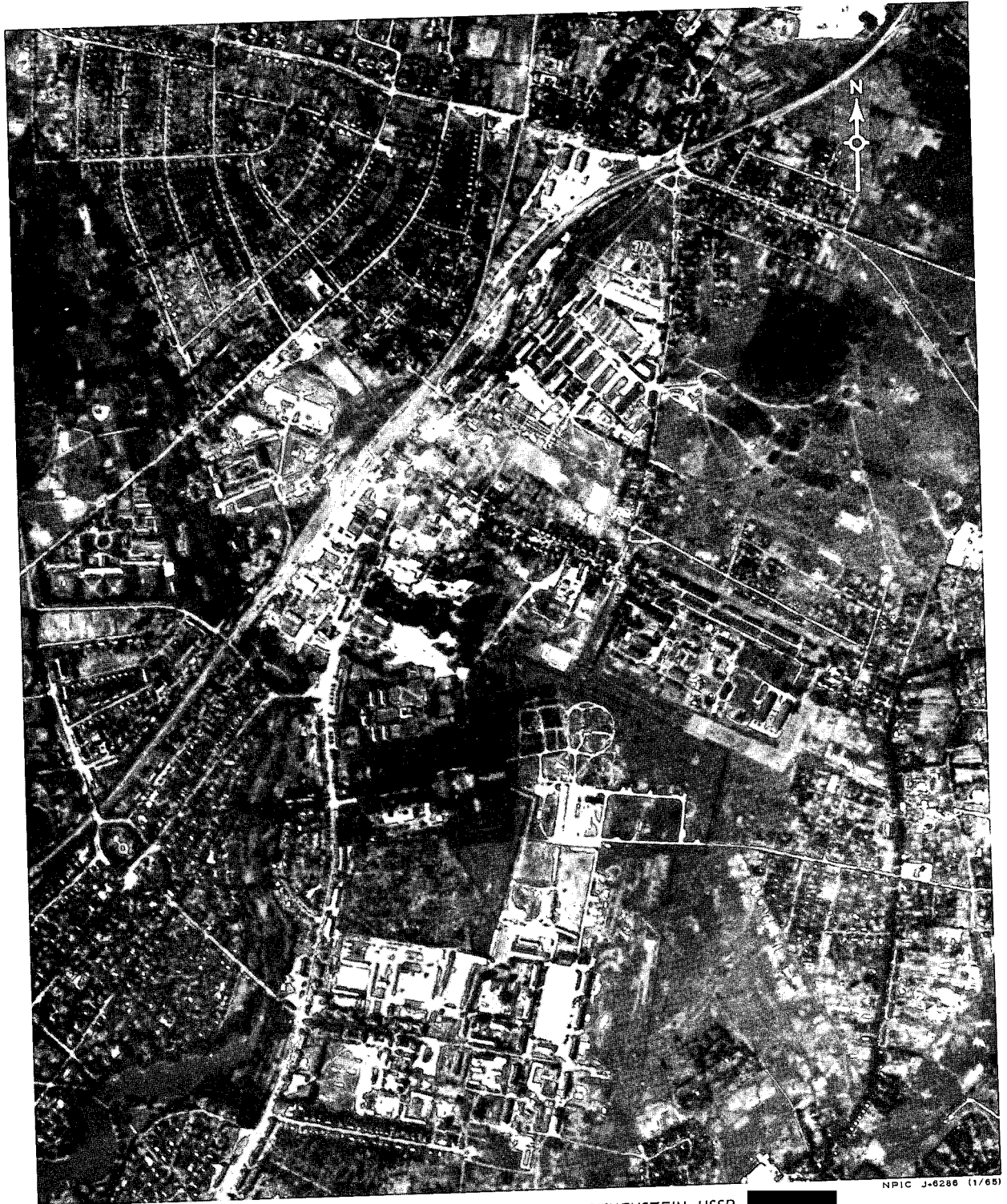


FIGURE 2. KALININGRAD ARMY BARRACKS ROTHENSTEIN, USSR, [REDACTED]

25X1D

Handle Via
TALENT-KEYHOLE
Control System Only

Handle Via
TALENT-KEYHOLE
Control System Only

TCS-10656/64
NPIC/R-5135/64

SUMMARY

25X1D

Kaliningrad Army Barracks Rothenstein is located in the northeast portion of Kaliningrad, approximately 1 kilometer (km) north of Kaliningrad Army Barracks Kummerav, and 3 km northwest of Kaliningrad/Devau Airfield (Figure 1).

The installation covers approximately 60 acres and contains 7 barracks, 3 probable administration buildings, 8 vehicle/equipment

sheds, 2 vehicle maintenance buildings, 3 storage buildings, and 10 support buildings (Figures 2 and 3).

KEYHOLE missions of interpretable quality between [redacted] were used in the preparation of this report. Comparative analysis revealed no major changes to the installation during this period.

25X1D

DESCRIPTION OF INSTALLATION

Railroad Service

Kaliningrad Railroad Station and Yards Rothenstein [redacted] is located adjacent to the northwest portion of the area. Two rail spurs appear to serve the installation.

3 probable administration, 3 storage, and 7 support buildings.

Other Buildings and Facilities

Area H contains one long, narrow 500- by 15-foot building and 2 smaller, probably associated buildings.

Road Service

Area is served by city streets of Kaliningrad.

Equipment Storage/Maintenance Area

Eight vehicle/equipment sheds (one L-shaped 200 by 40 by 200 by 40 feet, one 300 by 50 feet, one 250 by 50 feet, and five 230 by 70 feet) and 2 vehicle maintenance buildings (one 150 by 80 feet, the other 200 by 40 feet) are located in Area J.

Aircraft Landing Strips

Kaliningrad/Devau Airfield [redacted] is 3 km southeast of the installation.

Administrative and Troop Housing Area

Area D contains 7 multistory barracks,

Handle Via
TALENT-KEYHOLE
Control System Only

Handle Via
TALENT-KEYHOLE
Control System Only

TCS-10656/64
NPIC/R-5135/64

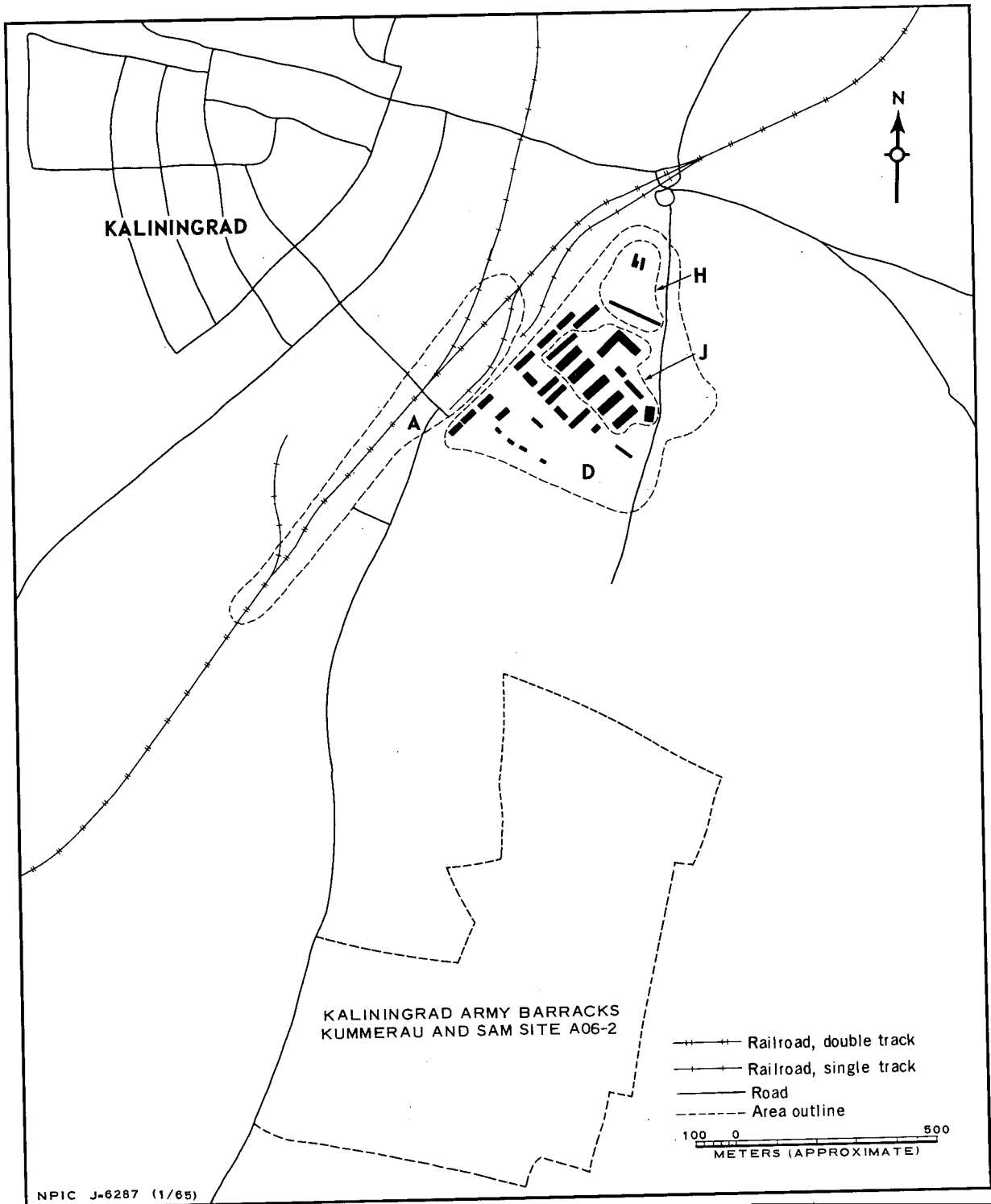


FIGURE 3. KALININGRAD ARMY BARRACKS ROTHENSTEIN. Sketch compiled from [REDACTED]

25X1D

Handle Via
TALENT-KEYHOLE
Control System Only

Handle Via
TALENT-KEYHOLE
Control System Only

TCS-10656/64
NPIC/R-5135/64

REFERENCES

PHOTOGRAPHY

25X1D

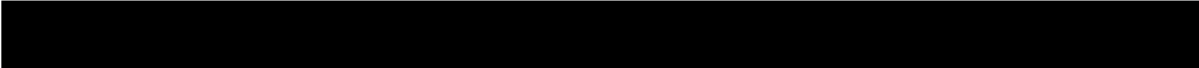


MAPS OR CHARTS

US Air Target Chart, Series 200, Sheet 0169-10HL, 2d ed, Nov 63 (SECRET)

DOCUMENTS

25X1C



REQUIREMENT

DIAAP-1-15-64 (partial answer)

NPIC PROJECT

11904/64

Handle Via
TALENT-KEYHOLE
Control System Only

~~TOP SECRET~~

~~TOP SECRET~~