

~~TOP SECRET~~

NPIC/R-5152/64

December 1964

TCS-11041/64

Copy 107

6 Pages



PHOTOGRAPHIC INTERPRETATION REPORT

# SOVIET MILITARY ORDER OF BATTLE BALTIC MD

## Declass Review by NIMA/DOD



CIA



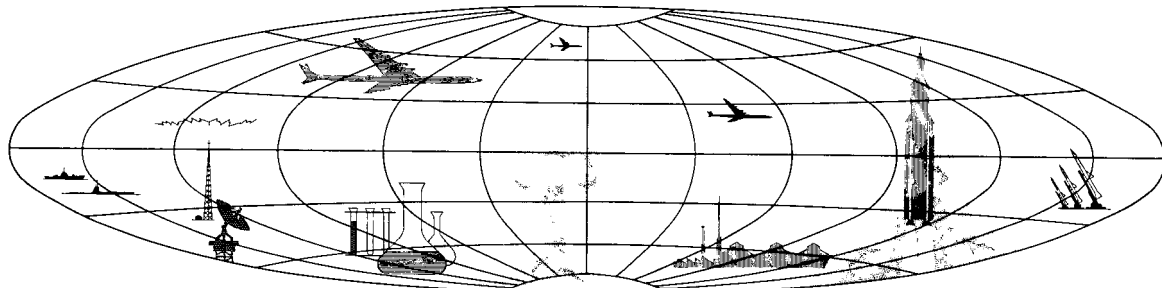
DIA

Handle Via **TALENT-KEYHOLE** Control Only

WARNING

This document contains classified information affecting the national security of the United States within the meaning of the espionage laws U. S. Code Title 18, Sections 793 and 794. The law prohibits its transmission or the revelation of its contents in any manner to an unauthorized person, as well as its use in any manner prejudicial to the safety or interest of the United States or for the benefit of any foreign government to the detriment of the United States. It is to be seen only by personnel especially indoctrinated and authorized to receive TALENT-KEYHOLE information. Its security must be maintained in accordance with KEYHOLE and TALENT regulations.

NATIONAL PHOTOGRAPHIC INTERPRETATION CENTER



~~TOP SECRET~~

GROUP 1  
Excluded from automatic  
downgrading and declassification

Handle Via  
TALENT-KEYHOLE  
Control System Only

TCS-11041/64  
NPIC/R-5152/64

### PREFACE

This report is one in a series on Soviet Ground Force and Logistic installations being prepared for a DIA/CIA Panel. The series is being coordinated, published and disseminated by NPIC. The photographic analysis is being performed by the NPIC Photographic Analysis Group, the CIA Photographic Intelligence Division (NPIC), and the Production Center 1P1a (DIA). The photographic analysis for this particular report was performed by the Production Center 1P1a.

In the interest of uniformity, the titles and letter designators for the facilities observed at these installations are identical with those appearing in the project requirement. When a specific facility is not observed both its title and letter designator are omitted in the report.

Titles and letter designators for the various facilities are as follows: (A) railroad service, (B) road service, (C) landing strips, (D) administrative and troop housing areas, (E) storage areas, (F) ammunition storage areas, (G) POL storage areas, (H) other buildings and facilities, (J) equipment storage/maintenance areas, (K) athletic fields, (L) small arms firing ranges, (M) driver training areas, (N) tank/assault gun firing ranges, (P) flat trajectory firing ranges, (Q) artillery emplacements (batteries), (R) infantry or combined arms field training areas or courses, (S) special training facilities, (T) unidentified facilities or tracking activity.

Handle Via  
TALENT-KEYHOLE  
Control System Only

Handle Via  
TALENT-KEYHOLE  
Control System Only

TCS-11041/64  
NPIC/R-5152/64

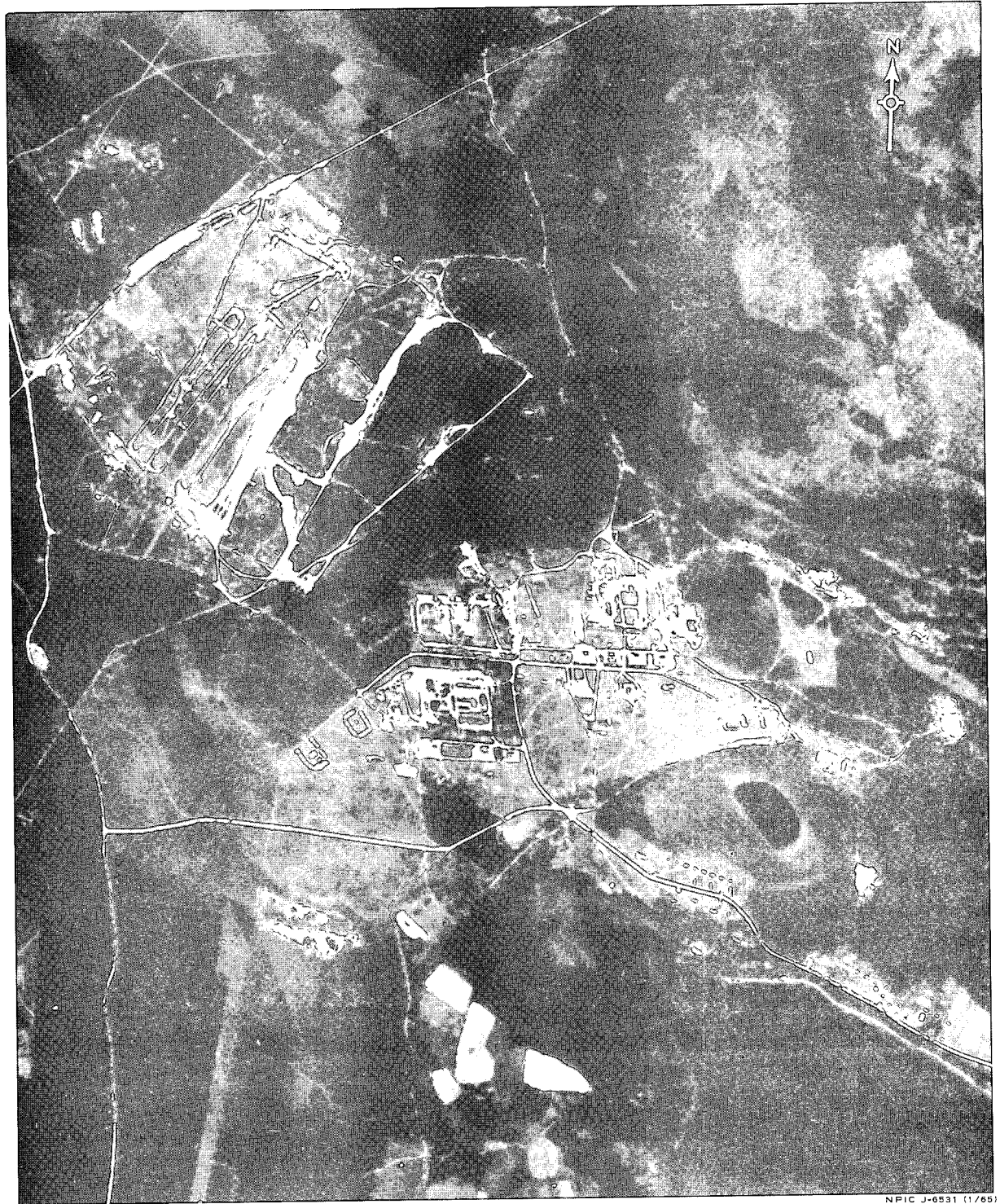


FIGURE 2. MILITARY INSTALLATION AND TRAINING AREA, SAAREMAA ISLAND, USSR, [REDACTED]

25X1D

Handle Via  
TALENT-KEYHOLE  
Control System Only

Handle Via  
TALENT-KEYHOLE  
Control System Only

TCS-11041/64  
NPIC/R-5152/64

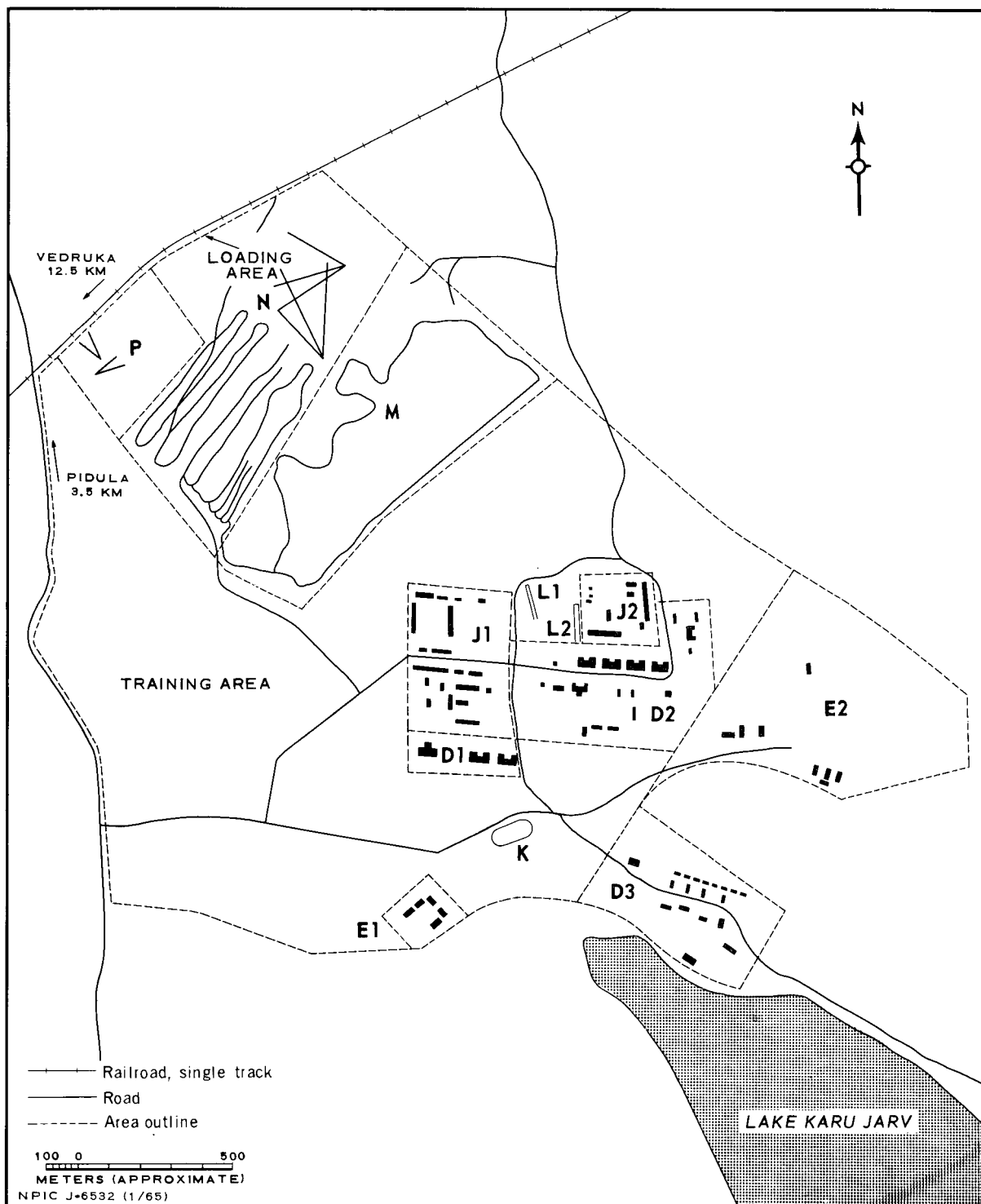


FIGURE 3. MILITARY INSTALLATION AND TRAINING AREA. Sketch compiled from [redacted]

25X1D

Handle Via  
TALENT-KEYHOLE  
Control System Only

Approved For Release 2000/06/14 : CIA-RDP78B04560A004300010060-5

Approved For Release 2000/06/14 : CIA-RDP78B04560A004300010060-5