

SECRET

PHOTOGRAPHIC INTERPRETATION REPORT



25X1A

MISSION 8075

15 FEBRUARY 1966

NPIC/R-77/66
FEBRUARY 1966

GROUP 1 EXCLUDED FROM
AUTOMATIC DOWNGRADING
AND DECLASSIFICATION

SECRET

MISSION 8075 15 FEB 66

NPIC/R-77/66

25X1A

PREFACE

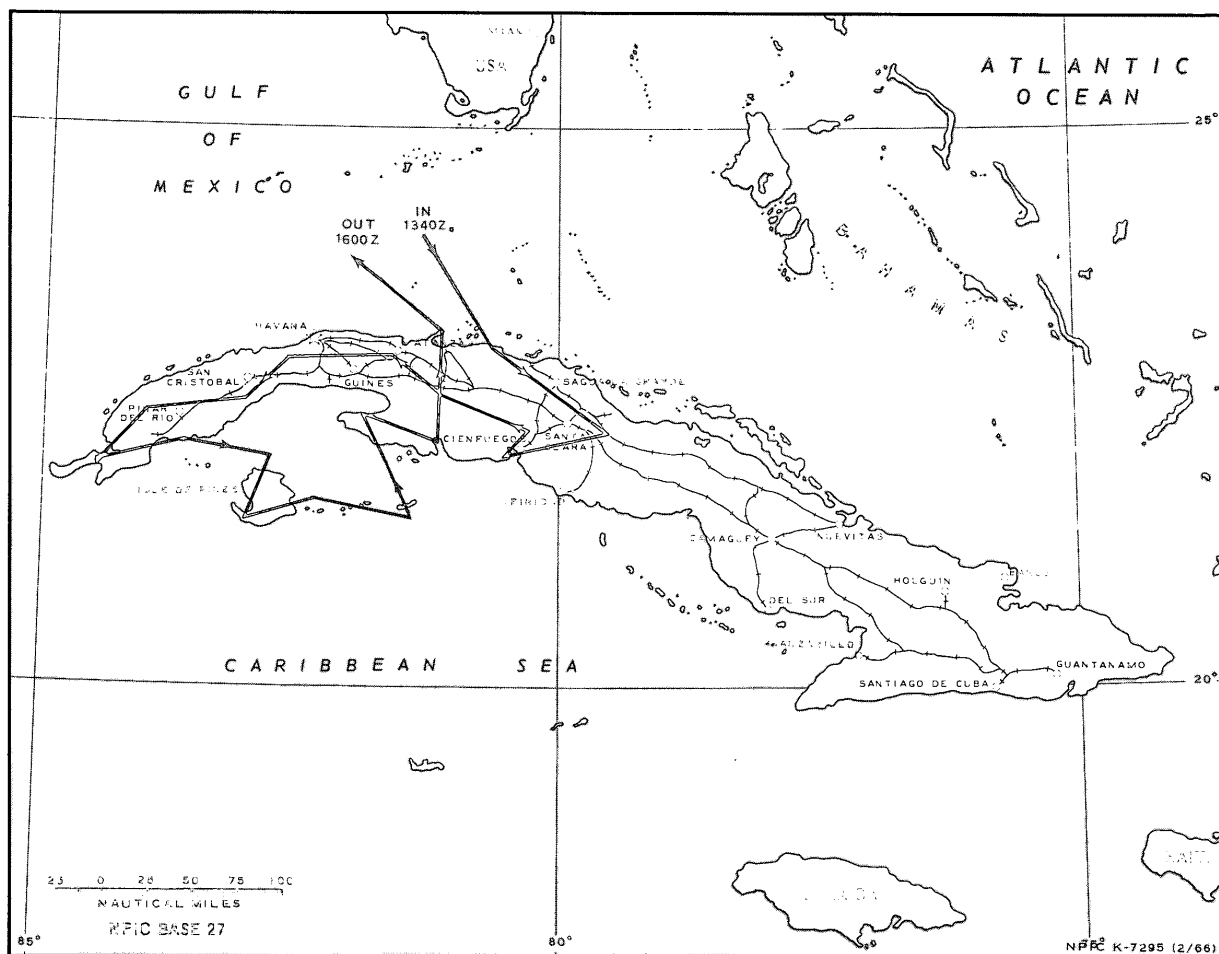
THE FOLLOWING INFORMATION REPRESENTS A PRELIMINARY ANALYSIS OF AERIAL PHOTOGRAPHY FROM [REDACTED] MISSION 8075, 15 FEB 66. THE NUMBER AT THE RIGHT MARGIN OF THE HEADER LINE IS THE COMOR TARGET NUMBER.

SYMBOLS USED TO INDICATE CONDITIONS WHICH AFFECT THE APPEARANCE OF THE TARGET ON PHOTOGRAPHY ARE AS FOLLOWS--
C (CLEAR), SC (SCATTERED CLOUD COVER), HC (HEAVY CLOUD COVER), H (HAZE), CS (CLOUD SHADOW), SD (SEMIDARKNESS), GC (GROUND COVER), CF (CAMOUFLAGE), O (OBLIQUITY), AND GR (GROUND RESOLUTION).

INTERPRETABILITY OF THE PHOTOGRAPHY IS CATEGORIZED AS G (GOOD), F (FAIR), OR P (POOR). THE EXTENT OF TARGET COVERAGE IS DENOTED BY THE SYMBOLS T (TOTAL) OR PT (PARTIAL). THE MODE OF COVERAGE IS SIGNIFIED BY ST (STEREO), NS (NONSTEREO), OR PS (PARTIAL STEREO).

AAA DEFENSES ARE DIVIDED INTO THREE BASIC CATEGORIES -- LIGHT (ZPU-2, ZPU-4, AND 37MM), MEDIUM (57MM AND 85MM), AND HEAVY (100MM AND LARGER). WHERE SUCH A CATEGORY CANNOT BE DETERMINED, THE SITE WILL BE LISTED AS AN AAA SITE AND THE NUMBER OF GUNS INDICATED (EXAMPLE 6-GUN AAA SITE, OCCUPIED/UNOCCUPIED).

Approved For Release 2000/04/17 : CIA-RDP78B04560A005400010032-4



APPROXIMATE TRACK OF [REDACTED] MISSION 8075, 15 FEBRUARY 1966

25X1A

Approved For Release 2000/04/17 : CIA-RDP78B04560A005400010032-4

SECRET

2

SECRET

NPIC/R-77/66

MISSION 8075 15 FEB 66

NPIC/R-77/66

ITEM OF SPECIAL INTEREST

CONSTANCIA SAM SITE IS NOW OCCUPIED. SUPPORT FACILITIES ARE COMPLETED, HOWEVER, THE SITE REMAINS UNREVIEWED.

MISSILES

25X1A

ALQUIZAR SAM SITE

CU 2249N 08238W

OB -- AT LEAST 5 EMPLACED LAUNCHERS WITH MISSILES, AND GUIDANCE RADAR WITH 5 VANS AND ASSOCIATED EQUIPMENT. NO APPARENT CHANGE IN LAUNCH AND SUPPORT FACILITIES.

25X1D

CAMPO FLORIDO SAM SITE

CU 2309N 08202W

OB -- 6 EMPLACED LAUNCHERS (2 WITH MISSILES), 5 MISSILE TRANSPORTERS (3 CANVAS-COVERED), GUIDANCE RADAR WITH 4 ASSOCIATED PROBABLE VAN TRAILERS, 9 POSSIBLE TRACKED PRIME MOVERS, AND 4 OTHER VEHICLES. ACTIVITY -- 2 OCCUPIED 6-GUN AAA SITES. NO APPARENT CHANGE IN LAUNCH AND SUPPORT FACILITIES.

25X1D

CIFUENTES SAM ASSEMBLY AREA

CU 2236N 08005W

OB -- AT LEAST 8 MISSILE TRANSPORTERS AND NUMEROUS MISSILE CANISTERS. ACTIVITY -- 20 CARGO TRUCKS, 7 UTILITY TRUCKS, AND 12 CARGO TRAILERS. NO APPARENT CHANGE IN FACILITIES.

25X1D

EL CANO SAM TRAINING AREA

CU 2303N 08229W

OB -- 3 PROBABLE SA-2 LAUNCHERS, 4 MISSILE TRANSPORTERS, AND 15 VAN TRAILERS. ACTIVITY -- 5 CARGO TRUCKS, 17 VAN TRUCKS, AND 4 OTHER VEHICLES. NO APPARENT CHANGE IN FACILITIES.

25X1D

MISSION 8075 15 FEB 66

NPIC/R-77/66

25X1A

GUANABACOA SAM SITE

CU 2305N 08216W

OB -- 6 EMPLACED LAUNCHERS WITH MISSILES, 7 MISSILE TRANSPORTERS (4 WITH CANVAS-COVERED MISSILES), AND PROBABLE FAN SONG RADAR WITH ASSOCIATED EQUIPMENT. ACTIVITY -- AT LEAST 16 UNIDENTIFIED VEHICLES. NO APPARENT CHANGE IN LAUNCH AND SUPPORT FACILITIES.

25X1D

25X1A

GUARA SAM SITE

CU 2248N 08213W

OB -- 6 EMPLACED LAUNCHERS WITH MISSILES, 6 POSSIBLE MISSILE TRANSPORTERS (1 WITH EXPOSED MISSILE) AND GUIDANCE RADAR WITH 4 VAN TRAILERS AND ASSOCIATED EQUIPMENT. NO APPARENT CHANGE IN LAUNCH AND SUPPORT FACILITIES.

25X1D

25X1A

LA CACHIMBA SAM SITE

CU 2245N 08227W

OB -- 6 EMPLACED LAUNCHERS (3 WITH MISSILES), AT LEAST 4 CANVAS-COVERED MISSILE TRANSPORTERS, AND GUIDANCE RADAR WITH 6 ASSOCIATED VAN TRAILERS. NO APPARENT CHANGE IN LAUNCH AND SUPPORT FACILITIES.

25X1D

25X1A

LA SALUD SAM SITE

CU 2253N 08224W

OB -- 6 EMPLACED LAUNCHERS (3 WITH MISSILES), 7 MISSILE TRANSPORTERS (4 CANVAS COVERED), GUIDANCE RADAR WITH 6 ASSOCIATED VAN TRAILERS, 2 ADDITIONAL VAN TRAILERS, AND 3 TRACKED PRIME MOVERS. ACTIVITY -- 2 CARGO TRUCKS AND 2 OCCUPIED 6-GUN AAA SITES. NO APPARENT CHANGE IN LAUNCH AND SUPPORT FACILITIES.

25X1D

25X1A

MAJANA SAM SITE

CU 2241N 08249W

OB -- LAUNCH AREA -- 6 EMPLACED LAUNCHERS, 6 MISSILE TRANSPORTERS, AND GUIDANCE RADAR WITH 4 ASSOCIATED VAN

25X1A

MISSION 0875 15 FEB 66

NPIC/R-77/66

TRAILERS. ASSEMBLY AND SUPPORT AREA -- 19 MISSILE
TRANSPORTERS (16 WITH EXPOSED MISSILES).
ACTIVITY -- 3 UNIDENTIFIED VEHICLES.
NO APPARENT CHANGE IN LAUNCH AND SUPPORT FACILITIES.

25X1D

MAJANA SAM SITE 2

CU 2241N 08249W

25X1A

OB -- 6 LAUNCHERS (ALL PROBABLY EMPLACED, 1 WITH A
POSSIBLE MISSILE) AND GUIDANCE RADAR WITH 6 ASSOCIATED
VAN TRAILERS.
ACTIVITY -- 1 POSSIBLE CARGO TRUCK AND ONE 6-GUN AAA
SITE WITH 4 POSITIONS OCCUPIED.
NO APPARENT CHANGE IN LAUNCH FACILITIES.

25X1D

MANAGUA SAM SITE

CU 2259N 08215W

25X1A

OB -- 6 EMPLACED LAUNCHERS (3 WITH MISSILES), 7 MISSILE
TRANSPORTERS (3 WITH EXPOSED MISSILES AND 2 CANVAS
COVERED), FAN SONG RADAR WITH 6 ASSOCIATED VAN
TRAILERS, 3 ADDITIONAL VAN TRAILERS, AND 8 TRACKED
PRIME MOVERS.
ACTIVITY -- 3 OTHER VEHICLES.
NO APPARENT CHANGE IN LAUNCH AND SUPPORT FACILITIES.

25X1D

MARIEL SAM SITE 2

CU 2300N 08248W

25X1A

OB -- 6 EMPLACED LAUNCHERS (3 WITH MISSILES), 7 MISSILE
TRANSPORTERS (3 CANVAS COVERED), FAN SONG RADAR WITH 6
ASSOCIATED VAN TRAILERS, AND 3 ADDITIONAL VAN TRAILERS.
ACTIVITY -- 1 CARGO TRUCK, 1 TRUCK-MOUNTED CRANE, AND 1
UTILITY TRUCK.
NO APPARENT CHANGE IN LAUNCH AND SUPPORT FACILITIES.

25X1D

PUNTA BRAVA SAM SITE

CU 2301N 08231W

25X1A

OB -- 6 EMPLACED LAUNCHERS (3 WITH MISSILES), 6 MISSILE
TRANSPORTERS (4 WITH EXPOSED MISSILES), GUIDANCE RADAR

25X1A

MISSION 8075 15 FEB 66

NPIC/R-77/66

WITH 6 ASSOCIATED VAN TRAILERS, AND 2 OTHER VAN TRAILERS.
NO APPARENT CHANGE IN LAUNCH AND SUPPORT FACILITIES.

25X1D

RANCHUELO SAM SITE

CU 2223N 08010W

25X1A

OB -- 5 EMPLACED LAUNCHERS (2 WITH MISSILES), 4 MISSILE TRANSPORTERS (ALL WITH EXPOSED MISSILES), AND FAN SONG RADAR WITH 4 ASSOCIATED VAN TRAILERS.
ACTIVITY -- 1 OCCUPIED 6-GUN AAA SITE.
NO APPARENT CHANGE IN LAUNCH AND SUPPORT FACILITIES.

25X1D

SAN DIEGO DEL VALLE SAM SITE

CU 2232N 08003W

25X1A

OB -- 4 EMPLACED LAUNCHERS AND 1 CARGO TRUCK.
NO APPARENT CHANGE IN LAUNCH AND SUPPORT FACILITIES.

25X1D

SANTA CLARA SAM SITE

CU 2229N 08000W

25X1A

OB -- AT LEAST 4 EMPLACED LAUNCHERS (2 WITH MISSILES), 2 POSSIBLE MISSILE TRANSPORTERS, AND GUIDANCE RADAR.
ACTIVITY -- 7 POSSIBLE CARGO TRUCKS.
NO APPARENT CHANGE IN LAUNCH AND SUPPORT FACILITIES.

25X1D

SIGUANEA SAM SITE

CU 2137N 08257W

25X1A

OB -- 6 EMPLACED LAUNCHERS (1 WITH MISSILE), 17 CANVAS-COVERED MISSILE TRANSPORTERS, GUIDANCE RADAR WITH SHED-COVERED GUIDANCE EQUIPMENT AND 3 ASSOCIATED VAN TRAILERS, 23 TRACKED PRIME MOVERS, AND 9 FA PIECES.
ACTIVITY -- 17 CARGO TRUCKS, 5 UTILITY TRUCKS, AND 2 CARGO TRAILERS.
NO APPARENT CHANGE IN LAUNCH AND SUPPORT FACILITIES.

25X1D

MISSION 8075 15 FEB 66

NPIC/R-77/66

25X1A

TAPASTE SAM ASSEMBLY AREA

CU 2301N 08204W

OB -- 18 MISSILE TRANSPORTERS (3 CANVAS COVERED), 5
FLATBED TRAILERS, 1 POSSIBLE FLATBED TRAILER, 3
TRUCK-MOUNTED CRANES, 7 CARGO TRUCKS, AND NUMEROUS
MISSILE CANISTERS.

ACTIVITY -- 1 OCCUPIED 6-GUN MEDIUM AAA SITE.
NO APPARENT CHANGE IN FACILITIES.

25X1D

25X1A

TORRENS SAM ASSEMBLY AREA

CU 2257N 08227W

OB -- 13 MISSILE TRANSPORTERS (4 WITH EXPOSED MISSILES)
AND NUMEROUS MISSILE CANISTERS.

ACTIVITY -- 2 CARGO TRUCKS, 4 VAN TRUCKS, AND 9 LOWBOY
TRAILERS.

NO APPARENT CHANGE IN FACILITIES.

25X1D

25X1A

SANTA ISABEL DE LAS LAJAS SAM SITE

CU 2228N 08018W

CONSTRUCTION CONTINUES ON PERMANANT SAM SITE.
OB (AT ADJACENT TEMPORARY SITE) -- 5 EMPLACED LAUNCHERS
(3 WITH MISSILES) AND FAN SONG RADAR WITH 3 ASSOCIATED
VAN TRAILERS.

ACTIVITY -- 6 PROBABLE SMALL CARGO TRUCKS, 3 PROBABLE
VAN TRUCKS, AND 1 OCCUPIED 6-GUN AAA SITE.

NO APPARENT CHANGE IN LAUNCH AND SUPPORT FACILITIES.

25X1D

25X1A

LA CATALINA SAM SITE

CU 2258N 08200W

OB -- 6 EMPLACED LAUNCHERS (5 WITH MISSILES), 7 MISSILE
TRANSPORTERS (1 WITH EXPOSED MISSILE AND 1 WITHOUT
PRIME MOVER), 1 FAN SONG RADAR WITH ASSOCIATED
EQUIPMENT AND 4 VAN TRAILERS, AND 3 ADDITIONAL VAN
TRAILERS.

ACTIVITY -- 11 CARGO TRUCKS AND ONE 6-GUN MEDIUM AAA
SITE WITH 5 POSITIONS OCCUPIED.

NO APPARENT CHANGE IN LAUNCH AND SUPPORT FACILITIES.

25X1D

MISSION 8075 15 FEB 66

NPIC/R-77/66

25X1A

SANTIAGO DE LAS VEGAS SAM ASSEMBLY AREA CU 2257N 08221W

OB -- 12 MISSILE TRANSPORTERS, 7 TRACKED PRIME MOVERS,
AND APPROXIMATELY 75 MISSILE CANISTERS.
NO APPARENT CHANGE IN FACILITIES.

25X1D

CONSTANCIA SAM SITE

CU 2214N 08030W

25X1A

OB -- 6 EMPLACED LAUNCHERS (2 WITH MISSILES), 5 MISSILE
TRANSPORTERS, AND FAN SONG RADAR WITH 6 VAN TRAILERS.
ACTIVITY -- 7 PROBABLE CARGO TRUCKS AND 6 OTHER
VEHICLES/PIECES OF EQUIPMENT.
NO APPARENT CHANGE IN LAUNCH AND SUPPORT FACILITIES.
(SEE ATTACHMENT 1)

25X1D

SIGUANEA CRUISE-MISSILE SITE

CU 2137N 08258W

25X1A

OB -- 2 EMPLACED LAUNCHERS WITH MISSILES, 5
CANVAS-COVERED CRUISE-MISSILE TRANSPORTERS, 9
CRUISE-MISSILE CRATES, AND A GUIDANCE RADAR WITH 4 VAN
TRUCKS AND ASSOCIATED EQUIPMENT.
ACTIVITY -- 1 TRUCK-MOUNTED CRANE, 8 CARGO TRUCKS, AND
1 CARGO TRAILER.
NO APPARENT CHANGE IN LAUNCH AND SUPPORT FACILITIES.

25X1D

SANTA CRUZ DEL NORTE CRUISE-MISSILE SITE CU 2309N 08156W

25X1A

OB -- 2 EMPLACED LAUNCHERS, 10 CRUISE-MISSILE CRATES,
PROBABLE GUIDANCE EQUIPMENT, AND AT LEAST 8
UNIDENTIFIED VEHICLES.
NO APPARENT CHANGE IN LAUNCH AND SUPPORT FACILITIES.

25X1D

SAN JOSE DE LAS LAJAS CRUISE-MSL STORAGE CU 2255N 08210W

25X1A

OB -- 76 CRUISE-MISSILE CRATES, 40 CRUISE-MISSILE
TRANSPORTER-LAUNCHERS, AND 3 CRUISE-MISSILE RELATED
VEHICLES.

MISSION 8075 15 FEB 66

NPIC/R-77/66

ACTIVITY -- 88 CARGO TRUCKS, 37 VAN TRUCKS, 1 TRUCK-MOUNTED CRANE, 9 UTILITY TRUCKS, 1 BULLDOZER, 2 CARGO TRAILERS, 11 OTHER VEHICLES, AND ONE 6-GUN MEDIUM AND ONE 3-GUN LIGHT AAA SITE (BOTH OCCUPIED). NO APPARENT CHANGE IN FACILITIES.

25X1D

GUANAJAY CRUISE-MISSILE SITE

CU 2256N 08239W

25X1A

OB -- 2 EMPLACED LAUNCHERS, 4 MISSILE TRANSPORTERS, AN OCCUPIED GUIDANCE AREA, AND 8 TRACKED PRIME MOVERS. ACTIVITY -- 4 CARGO TRUCKS, 2 VAN TRUCKS, 15 OTHER VEHICLES, AND 1 OCCUPIED 6-GUN AAA SITE. NO APPARENT CHANGE IN LAUNCH AND SUPPORT FACILITIES.

25X1D

GUANABO CRUISE-MISSILE SITE

CU 2309N 08203W

25X1A

OB -- 2 EMPLACED LAUNCHERS AND AN OCCUPIED GUIDANCE AREA. ACTIVITY -- AT LEAST 10 UNIDENTIFIED VEHICLES/PIECES OF EQUIPMENT. NO APPARENT CHANGE IN LAUNCH AND SUPPORT FACILITIES.

25X1D

AIR FACILITIES

CAMILO CIENFUEGOS AIRFIELD

CU 2229N 07956W

25X1A

OB -- AT LEAST 13 FAGOT/FRESCO OBSERVED IN CLOUD-FREE AREAS.

25X1D

CORONEL PASCUAL AIRFIELD

CU 2307N 08117W

25X1A

OB -- 1 PROBABLE DC-7.

25X1D

MISSION 8075 15 FEB 66

NPIC/R-77/66

25X1A

SAN ANTONIO DE LOS BANOS AIRFIELD

CU 2252N 08230W

OB -- 31 FISHBED, 7 FARMER, 18 FAGOT/FRESCO, AND 1 HOUND.

25X1D

25X1A

SAN JULIAN AIRFIELD

CU 2205N 08409W

OB -- 5 FAGOT/FRESCO, 22 ZLIN TRENER, 1 CRATE, 3 COLT, 4 LIAISON, AND 1 HOUND.

25X1D

25X1A

JOSE MARTI INTERNATIONAL AIRFIELD

CU 2259N 08224W

OB -- OPERATIONS AREA -- 2 BRITANNIA, 2 COOT, 1 CUB, 1 C-54, 3 CRATE, 4 C-46, AND 5 LIAISON.
MAINTENANCE AREA -- 7 CRATE, 1 C-47, AND 4 LIAISON.
GRAVEYARD AREA -- 3 CONSTELLATION, 1 C-54, AND 5 LIAISON.

25X1D

25X1A

CAMPO LIBERTAD AIRFIELD

CU 2305N 08226W

OB -- 7 COLT AND 10 LIAISON.

25X1D

25X1A

PLAYA BARACOA AIRFIELD

CU 2302N 08234W

OB -- 1 CRATE, 1 LIAISON, 24 HOUND (9 WITHOUT ROTORS), 1 HARE, AND 2 BELL HELICOPTERS.

25X1D

25X1A

COLONEL MARTIN MARRERRO AIRFIELD

CU 2150N 08246W

OB -- 2 COLT AND 1 LIAISON.
ACTIVITY -- 1 OCCUPIED 6-GUN AAA SITE. SIX ADDITIONAL AAA PIECES ARE ADJACENT TO THE SITE.

MISSION 8075 15 FEB 66

NPIC/R-77/66

25X1D

JAIME GONZALES AIRFIELD

CU 2209N 08024W

OB -- NONE OBSERVED.

25X1A

25X1D

PINAR DEL RIO AIRFIELD

CU 2225N 08340W

OB -- 2 LIAISON AND 1 POSSIBLE HOUND.

25X1A

25X1D

NAVAL ACTIVITY/PORTS

MARIEL NAVAL BASE AND NAVAL AIR STATION

CU 2259N 08244W

OB -- 3 KRONSHADT-CLASS PC, 5 S.O.1-CLASS SC (1 IN DRYDOCK), 1 PCE, AND 2 YP.
OTHER VESSELS -- 1 LARGE FREIGHTER, 2 COASTAL FREIGHTERS, AND 1 UNIDENTIFIED VESSEL.

25X1A

25X1D

CABANAS NAVAL BASE

CU 2258N 08258W

OB -- 8 KOMAR-CLASS PTG, 2 YP, 5 CARGO TRUCKS, 2 VAN TRUCKS, AND 22 UTILITY TRUCKS.
NO APPARENT CHANGE IN FACILITIES.

25X1A

25X1D

CIENFUEGOS NAVAL BASE

CU 2208N 08027W

OB -- 1 KRONSHADT-CLASS PC, 1 PCE, 7 P-6-CLASS PT, AND 1 POSSIBLE P-6-CLASS PT.
OTHER VESSELS -- 3 LARGE FREIGHTERS AND 2 COASTAL FREIGHTERS.

25X1A

25X1D

MISSION 8075 15 FEB 66

NPIC/R-77/66

25X1A

LA ISABELA PORT

CU 2256N 08000W

VESSELS -- 3 LARGE FREIGHTERS.

25X1D

CARDENAS PORT

CU 2302N 08111W

VESSELS -- NONE OBSERVED.

25X1D

CASILDA PORT

CU 2145N 07959W

VESSELS -- NONE OBSERVED.

25X1D

MATANZAS PORT

CU 2302N 08134W

VESSELS -- 2 LARGE FREIGHTERS.

25X1D

HAVANA PORT

CU 2307N 08220W

OB -- 2 PF, 1 PROBABLE KRONSTADT-CLASS PC, 4 KOMAR-CLASS PTG, 2 P-6-CLASS PT, AND 3 POSSIBLE P-4-CLASS PT AT SEA.
OTHER VESSELS -- 16 LARGE FREIGHTERS (1 IN DRYDOCK), 6 COASTAL FREIGHTERS, 2 LARGE TANKERS (1 LEAVING PORT), 3 FISH FACTORY TRAWLERS (BMRT) MAYAKOVSKIY CLASS, AND 12 TRAWLERS.

25X1D

ELECTRONICS/COMMUNICATIONS

SAN JULIAN EW/GCI RADAR SITE

CU 2206N 08409W

OB -- 1 BAR LOCK, 1 PROBABLE ROCK CAKE/STONE CAKE, AND 1 PROBABLE FLAT FACE RADAR.
ACTIVITY -- 12 PROBABLE VAN TRUCKS AND 4 PROBABLE VAN

MISSION 8075 15 FEB 66

NPIC/R-77/66

TRAILERS.

25X1D

25X1A

SAGUA LA GRANDE EW/GCI RADAR SITE 2

CU 2248N 08006W

25X1D NO APPARENT CHANGE SINCE

25X1D

25X1D

25X1A

CAYO LARGO RADAR SITE

CU 2137N 08133W

NO MILITARY VEHICLES OR PIECES OF EQUIPMENT OBSERVED.

25X1D

MILITARY ACTIVITY

25X1A

ARTEMISA MILITARY CAMP

CU 2250N 08248W

OB -- AT LEAST 7 TANKS/SP GUNS AND APPROXIMATELY 75
OTHER VEHICLES.

ACTIVITY -- 1 OCCUPIED 6-GUN AAA SITE.

25X1D

25X1A

HAVANA MILITARY CAMP CALABAZAR

CU 2300N 08218W

OB -- 11 FA PIECES, 5 AAA PIECES, 7 MORTARS, 1
TRACTOR-TRAILER CARGO TRUCK, 169 OTHER CARGO TRUCKS, 9
PROBABLE BRDM APC, 10 UTILITY TRUCKS, AND 49 OTHER
VEHICLES.

NO APPARENT CHANGE IN FACILITIES.

25X1D

25X1A

REMEDIOS MILITARY AREA

CU 2227N 07935E

OB -- 7 TANKS/SP GUNS, 9 FA PIECES/MORTARS, 5 CARGO
TRUCKS, AND 186 OTHER VEHICLES OBSERVED IN CLOUD-FREE
AREAS.

NO APPARENT CHANGE IN FACILITIES.

MISSION 8075 15 FEB 66

NPIC/R-77/66

25X1D

SANTIAGO DE LAS VEGAS MILITARY CAMP

CU 2258N 08220W

25X1A

OB -- 4 FROG TRANSPORTERS, 30 TANKS/SP GUNS, 9 VAN TRUCKS WITH VAN TRAILERS, 22 CARGO TRUCKS, AND APPROXIMATELY 75 UNIDENTIFIED VEHICLES. NO APPARENT CHANGE IN FACILITIES.

25X1D

SANTIAGO DE LAS VEGAS MIL CAMP SOUTH

CU 2257N 08223W

25X1A

OB -- 2 TANKS/SP GUNS, 8 BTR 60-P (6 ARRANGED IN AAA FORMATION WITH 2 OTHERS IN THE CENTER), AND 2 CARGO TRUCKS. NO APPARENT CHANGE IN FACILITIES.

25X1D

TORRENS MILITARY COMPLEX

CU 2259N 08227W

25X1A

OB -- 6 TANKS/SP GUNS, 7 MORTARS, 15 BTR 60-P, 37 VAN TRUCKS, 32 CARGO TRUCKS, AND 18 UNIDENTIFIED VEHICLES. NO APPARENT CHANGE IN FACILITIES.

25X1D

ANTON RECIO MILITARY INSTALLATION

CU 2211N 08036W

25X1A

OB -- 6 PROBABLE TANKS/SP GUNS, 10 FA PIECES, AND 10 CARGO TRUCKS. ACTIVITY -- 1 OCCUPIED 6-GUN MEDIUM AAA SITE. NO APPARENT CHANGE IN FACILITIES.

25X1D

CAMPO FLORIDO MILITARY CAMP WSW

CU 2306N 08211W

25X1A

OB -- 8 POSSIBLE AAA PIECES/MORTARS AND 39 CARGO TRUCKS. NO APPARENT CHANGE IN FACILITIES.

MISSION 8075 15 FEB 66

NPIC/R-77/66

25X1D

CANTEL MILITARY CAMP

CU 2302N 08119W

25X1A

SIX EXCAVATIONS (3 WITH EARTH-COVERED ARCH-ROOFED BUILDINGS AND 3 WITH PARTIALLY COMPLETED ARCH-ROOFED BUILDINGS) OBSERVED IN CLOUD-FREE AREAS. NO OTHER CHANGES IN FACILITIES, MILITARY VEHICLES OR PIECES OF EQUIPMENT OBSERVED IN CLOUD-FREE AREAS.

25X1D

CAYO LARGO MILITARY AREA

25X1D

CU 2137N 08133W

25X1A

25X1D NO APPARENT CHANGE SINCE

25X1D

CEIBA MOCHA MILITARY AREA

CU 2257N 08142W

25X1A

OB -- 5 TANKS/SP GUNS, 2 CARGO TRUCKS, AND 1 OTHER VEHICLE.
NO APPARENT CHANGE IN FACILITIES.

25X1D

CORRALILLO MILITARY AREA

CU 2301N 08038W

25X1A

OB -- 5 TANKS/SP GUNS AND 10 PROBABLE UTILITY TRUCKS.
NO APPARENT CHANGE IN FACILITIES.

25X1D

GUANABACOA MILITARY AREA

CU 2307N 08215W

25X1A

OB -- 16 FA PIECES, 16 CARGO TRUCKS, AND AT LEAST 25 OTHER VEHICLES.
NO APPARENT CHANGE IN FACILITIES.

25X1D

MISSION 8075 15 FEB 66

NPIC/R-77/66

25X1A

GUANAJAY MILITARY CAMP MARTIN MESA

CU 2257N 08243W

OB -- 13 TANKS/SP GUNS, 39 FA PIECES, 9 AAA PIECES, 25 MORTARS, AND 106 CARGO TRUCKS.
ACTIVITY -- 1 OCCUPIED 6-GUN AAA SITE. SIX CARGO TRUCKS ARE ADJACENT TO THE SITE.
NO APPARENT CHANGE IN FACILITIES.

25X1D

JIBACOA STORAGE AREA

CU 2306N 08154W

OB -- NONE OBSERVED.
NO APPARENT CHANGE IN FACILITIES SINCE

25X1D

25X1A

25X1D

JURAGUA MILITARY ACTIVITY

CU 2209N 08035W

OB -- 18 FA PIECES AND 32 CARGO TRUCKS.
NO APPARENT CHANGE IN FACILITIES.

25X1A

25X1D

LA FLORA MILITARY CAMP

CU 2252N 08233W

OB -- 25 PROBABLE TANKS/SP GUNS AND AT LEAST 6 CARGO TRUCKS.
NO APPARENT CHANGE IN FACILITIES.

25X1A

25X1D

LIMONAR MILITARY CAMP SE

CU 2255N 08124W

OB -- APPROXIMATELY 30 UNIDENTIFIED VEHICLES.
ACTIVITY -- 1 OCCUPIED 6-GUN AAA SITE.
NO APPARENT CHANGE IN FACILITIES.

25X1A

25X1D

MISSION 8075 15 FEB 66

NPIC/R-77/66

25X1A

LIMONAR TANK TRAINING AREA

CU 2254N 08121W

OB -- 16 PROBABLE TANKS/SP GUNS.
ACTIVITY -- 2 OCCUPIED 6-GUN AAA SITES.
NO APPARENT CHANGE IN FACILITIES.

25X1D

25X1A

LOMAS TETAS DE MANAGUA TANK PARK

CU 2258N 08219W

OB -- 3 TANKS/SP GUNS.
NO APPARENT CHANGE IN FACILITIES.

25X1D

25X1A

MANAGUA MILITARY CAMP

CU 2258N 08217W

OB -- 11 HOUND, 21 SA-2 MISSILE TRANSPORTERS, 14
TANKS/SP GUNS, 7 BTR 60-P, 7 FLATBED TRAILERS (4 WITH
PRIME MOVERS), APPROXIMATELY 115 CARGO TRUCKS, 4 CARGO
TRAILERS, 29 TRACKED PRIME MOVERS, AND 23 OTHER
VEHICLES.
NO APPARENT CHANGE IN FACILITIES.

25X1D

25X1A

MINAS MILITARY CAMP JESUS MARIA FINCA

CU 2306N 08211W

OB -- 27 FA PIECES, 3 POSSIBLE AAA PIECES, 41 CARGO
TRUCKS, AND 9 OTHER VEHICLES.
NO APPARENT CHANGE IN FACILITIES.

25X1D

25X1A

NAZARENO MILITARY CAMP

CU 2257N 08213W

OB -- 15 TANKS/SP GUNS, 29 BTR 60-P, AND 20 CARGO
TRUCKS.
NO APPARENT CHANGE IN FACILITIES.

25X1D

MISSION 8075 15 FEB 66

NPIC/R-77/66

25X1A

SANTA CLARA ARTILLERY TRAINING AREA

CU 2222N 08000W

OB -- 10 POSSIBLE TANKS/SP GUNS AND 7 CARGO TRUCKS
OBSERVED IN CLOUD-FREE AREAS.
NO APPARENT CHANGE IN FACILITIES.

25X1D

25X1A

SANTA FE MILITARY CAMP LA CLARITA

CU 2144N 08247W

MAIN CAMP -- OB -- AT LEAST 12 PROBABLE FA PIECES AND
10 PROBABLE CARGO TRUCKS.
CAMP 1.5 NM WNW -- OB -- 5 AAA PIECES, 6 AAA
PIECES/MORTARS, AND 9 CARGO TRUCKS. ACTIVITY -- ONE
6-GUN AAA SITE WITH 5 POSITIONS OCCUPIED.
CAMP 4.8 NM NW -- OB -- 5 AAA PIECES, 6 UNIDENTIFIED
PIECES OF EQUIPMENT, 9 CARGO TRUCKS, AND 2 UTILITY
TRUCKS.
ACTIVITY -- 1 OCCUPIED 6-GUN AAA SITE.
ALL AREAS -- NO APPARENT CHANGE IN FACILITIES.

25X1D

25X1A

ENSENADA COLORADO LANDING BEACH

CU 2202N 08025W

MILITARY ACTIVITY CONSISTS OF ZIGZAG PERSONNEL TRENCHES
AND SINE WAVE TRENCHES AT THE EAST END OF THE BEACH
AREA.

25X1D

SANTA MARIA DEL ROSARIO VEHICLE PARK

CU 2303N 08215W

NO COMOR

OB -- 8 FROG TRANSPORTERS, 3 POSSIBLE FROG LAUNCHERS,
AND 3 OTHER VEHICLES.
NO APPARENT CHANGE IN FACILITIES.

25X1D

MISSION 8075 15 FEB 66

NPIC/R-77/66

-STATUS OF OTHER TARGETS OBSERVED-

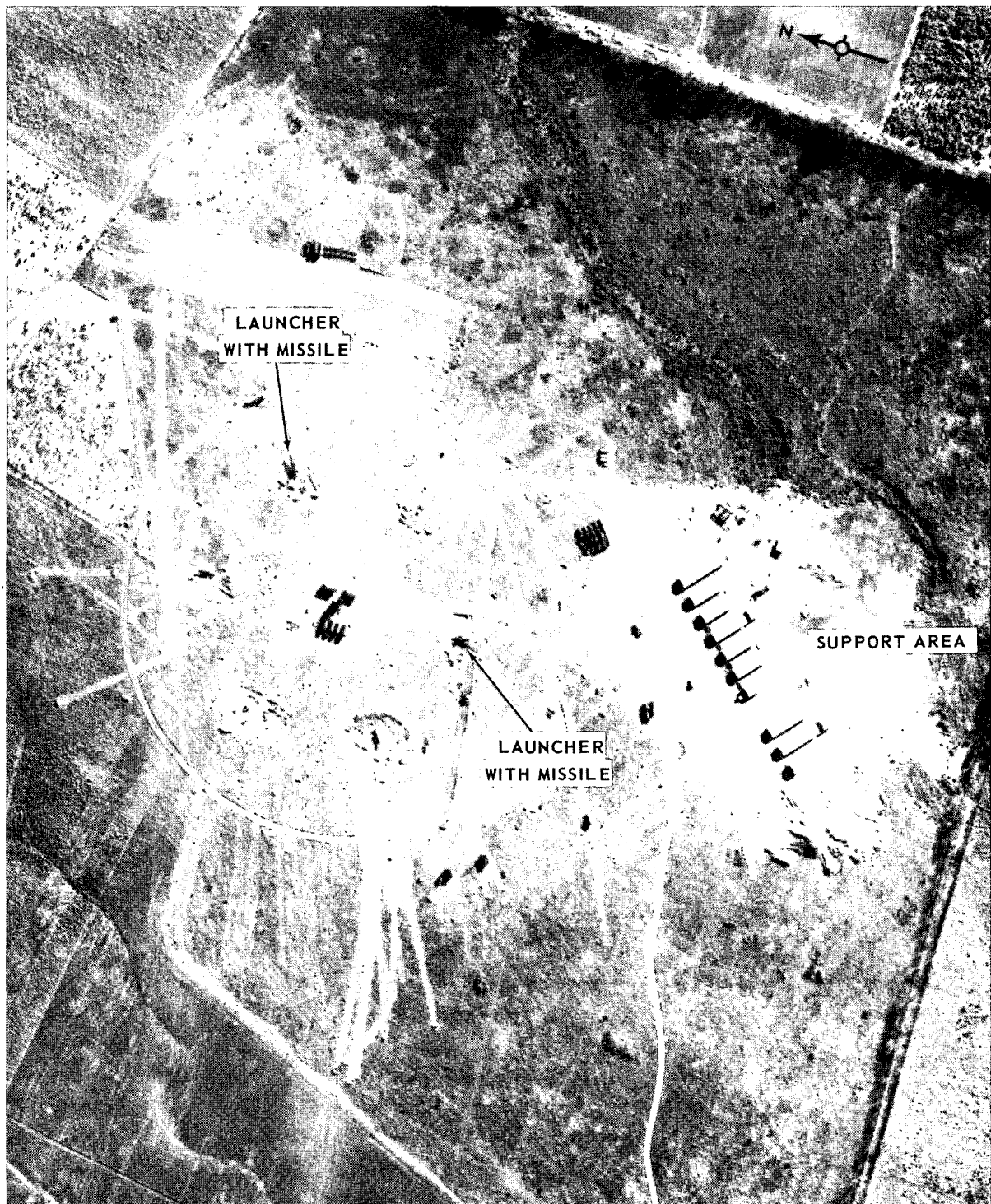
25X1A THE FOLLOWING TARGETS SHOW NO APPARENT CHANGE SINCE LAST COVERAGE--

SIGUANEA AIRFIELD	2138N 08257W
NUEVA GERONA PORT	2153N 08248W
CAIBARIEN PORT	2231N 07928W
SURGIDERO DE BATABANO PORT	2241N 08217W
BAHIA HONDA PORT	2255N 08310W
SAN ANTONIO DE LOS BANOS EW/GCI RDR SITE	2252N 08230W
SANTA FE EW/GCI RADAR SITE	2139N 08245W
CABANAS LOW SIEVE RADAR SITE	2259N 08259W
VARADERO LOW SIEVE RADAR SITE	2311N 08108W
RANCHO LUNA LOW SIEVE RADAR SITE	2202N 08025W
SANTA FE MILITARY CAMP LUMUMBA	2142N 08249W
ZARAGOZA MILITARY CAMP	2256N 08204W
SPECIAL AREA VERMONT	2301N 08248W
SPECIAL AREA OREGON	2259N 08244W
SPECIAL AREA WHITE	2254N 08232W
SPECIAL AREA TEXAS	2302N 08235W
SPECIAL AREA OHIO	2301N 08239W
SPECIAL AREA GREEN	2255N 08242W
SPECIAL AREA PURPLE	2254N 08228W
CIENFUEGOS LANDING BEACH	2202N 08036W
PLAYA COLOMBO LANDING BEACH	2154N 08246W
PLAYA DE FLAMENCOS LANDING BEACH	2153N 08243W

THE FOLLOWING TARGETS COULD BE IDENTIFIED BUT NOT INTERPRETED--

25X1A

SIGUANEA NAVAL BASE	2136N 08258W
SANTA CLARA EW/GCI RADAR SITE	2229N 07956W
HAVANA EW/GCI RADAR SITE COJIMAR	2308N 08219W
CABO SAN ANTONIO LOW SIEVE RADAR SITE	2152N 08457W
MATANZAS SUSPECT LOW SIEVE RADAR SITE	2307N 08138W
SAN MIGUEL EW/GCI RADAR SITE	2229N 07953W
HAVANA MILITARY CAMP COJIMAR	2309N 08215W
BAJURAYABO MILITARY CAMP	2308N 08210W
CAMPO FLORIDO MILITARY CAMP EAST	2307N 08206W
MARTI ARMOR TRAINING AREA	2258N 08059W
SAN DIEGO DE NUNEZ MILITARY CAMP	2254N 08305W
SANTA CLARA MILITARY CAMP CUBANACAN	2224N 07952W
TARARA LANDING BEACH	2310N 08211W
MATANZAS LANDING BEACH	2301N 08126W



CONSTANCIA SAM SITE, CUBA

NPIC K-7325 (2/66)

[illegible]

