

CONFIDENTIAL

Approved For Release 2001/03/30 : CIA-RDP78B04560A006200010025-3
NO FOREIGN DISSEM [REDACTED]

25X1C

PHOTOGRAPHIC INTERPRETATION REPORT



PHNOM PENH
PORT COMPLEX
CAMBODIA

NPIC/R-27/68

FEBRUARY 1968

GROUP 1 EXCLUDED FROM
AUTOMATIC DOWNGRADING
AND DECLASSIFICATION

CONFIDENTIAL

Approved For Release 2001/03/30 : CIA-RDP78B04560A006200010025-3

NO FOREIGN DISSEM [REDACTED]

25X1C

WARNING

This document contains information affecting the national defense of the United States, within the meaning of Title 18, sections 793 and 794, of the U.S. Code, as amended. Its transmission or revelation of its contents to or receipt by an unauthorized person is prohibited by law.

RECORD COPY	COPY NO.	PUB. DATE	LOCATION	MASTER	DATE RECEIVED	LOCATION
DISPOSITION DATE(S) Approved For Release 2001/03/30 : CIA-RDP78B04560A006200010025-3				STOCK	MINIMUM	MAXIMUM 10
CUT TO COPIES 25	DATE 7-70	CUT TO COPIES	DATE	COPIES DESTROYED		
CUT TO COPIES 10	DATE 7-72	CUT TO COPIES	DATE			
CUT TO COPIES 0	DATE 7-74	MASTER	DATE			
DATE			NUMBER OF COPIES			DATE
MO.	DAY	YR.	RECEIVED OR ISSUED			DATE
			REC'D	ISS'D	BAL	
3	6	68	Dist Unit			51
3	10	69	NPIC			1 50
3	16	70	CRS/NSB			1 49
5	6	70	NPIC			1 48
1	22	71	INVENTORY			10
8	22	73	Total # 10 copies.			10 0
Approved For Release 2001/03/30 : CIA-RDP78B04560A006200010025-3						

[illegible]

TITLE	NPIC	C/NFOFORN EXCEPT	
	07-68	Feb 1968	25X1C

The Phnom Penh Port Facilities not only serve the national capital, but are a major transshipment point along the Mekong River. The berthing facilities, cargo handling equipment, and storage are limited, probably because of the major emphasis on the expansion of Shihanoukville, Cambodia's major deep water port. The Phnom Penh Naval Base is located 1.0 nm east of Phnom Penh.



NATIONAL PHOTOGRAPHIC INTERPRETATION CENTER

NAME

Phnom Penh Port Facilities

25X1A

COUNTRY

GEO COORDINATES

WAC

BE NO

NPIC NO

COMOR NO

CB

11-36N 104-55E

46B

REFERENCES

[REDACTED] (C/No Forn Dissem [REDACTED])
[REDACTED] AMS Series 1501A, NC 48Z, 13 Jun 66, (U); NPIC Project
11486AC/8

Along the Tonle Sap at Phnom Penh.

Facilities include 1 offshore wharf, 4 offshore floating wharves, 3 small T-head piers, 2 POL piers, 1 longitudinal finger pier, approximately 26 buildings of sufficient size to serve as warehouses/transit sheds, 2 small POL storage depots, and a small railyard adjacent to the longitudinal pier.

CONFIDENTIAL
NO FOREIGN DISSEM

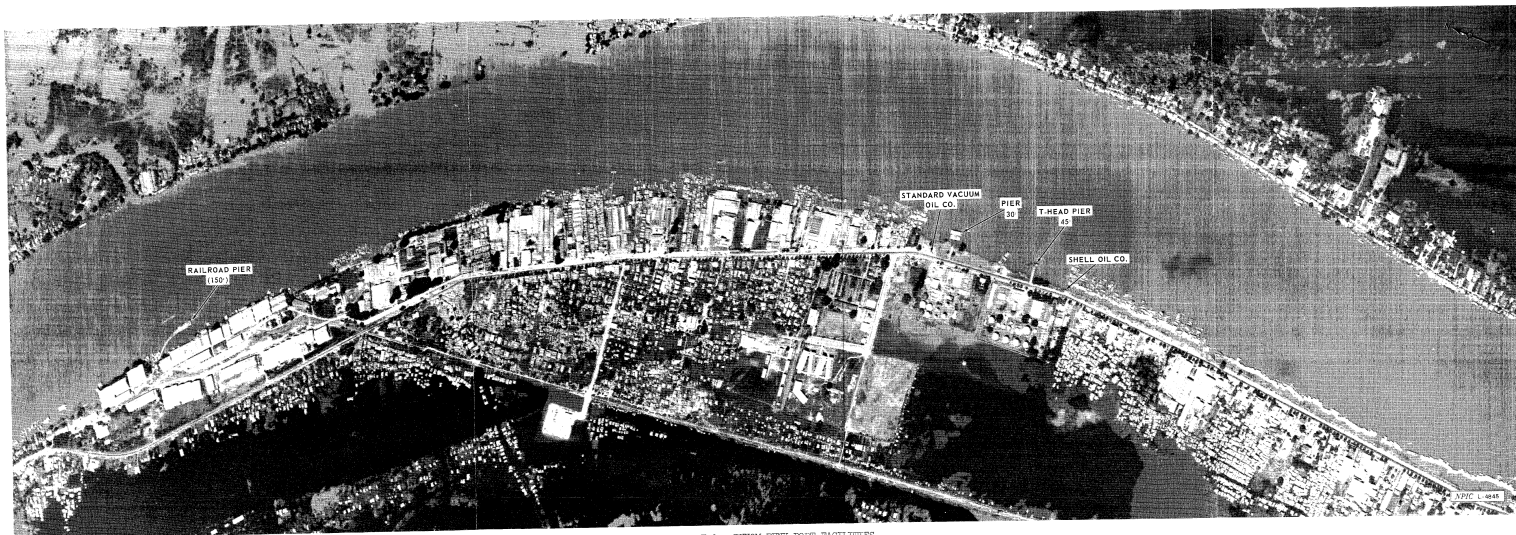


FIGURE 2. PHNOM PENH PORT FACILITIES

- 3 -

CONFIDENTIAL
NO FOREIGN DISSEM

NO FOREIGN DISSEM
CONFIDENTIAL

25X1D

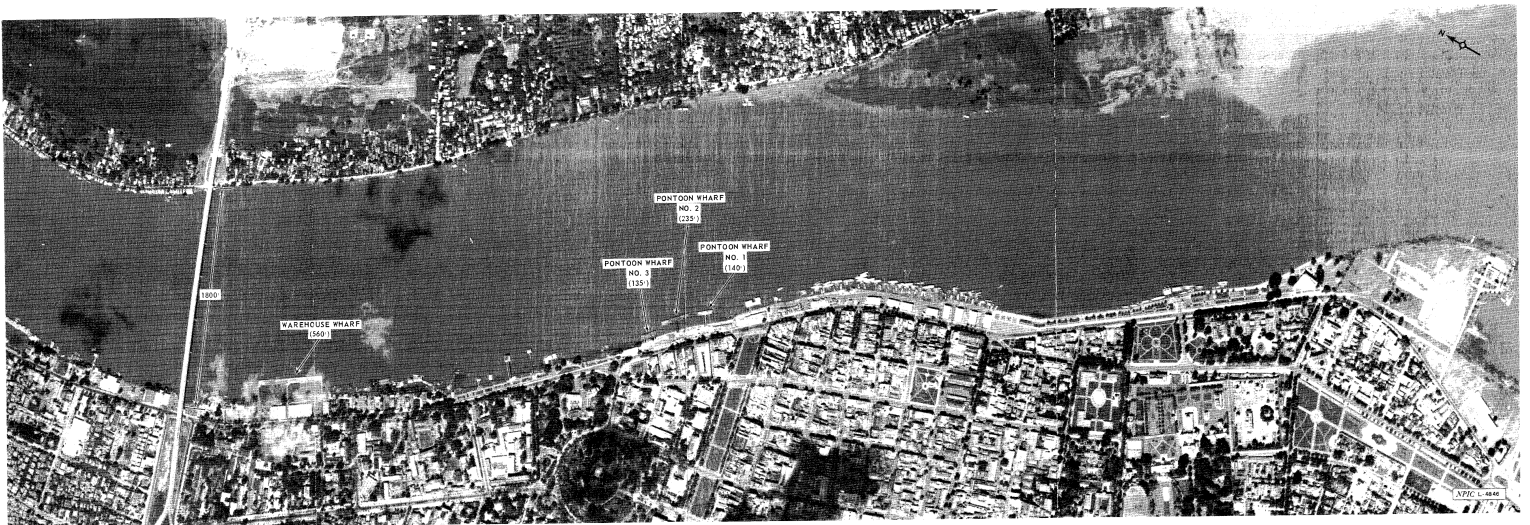


FIGURE 3. PHNOM PENH PORT FACILITIES

- 4 -

NO FOREIGN DISSEM
CONFIDENTIAL

25X1C

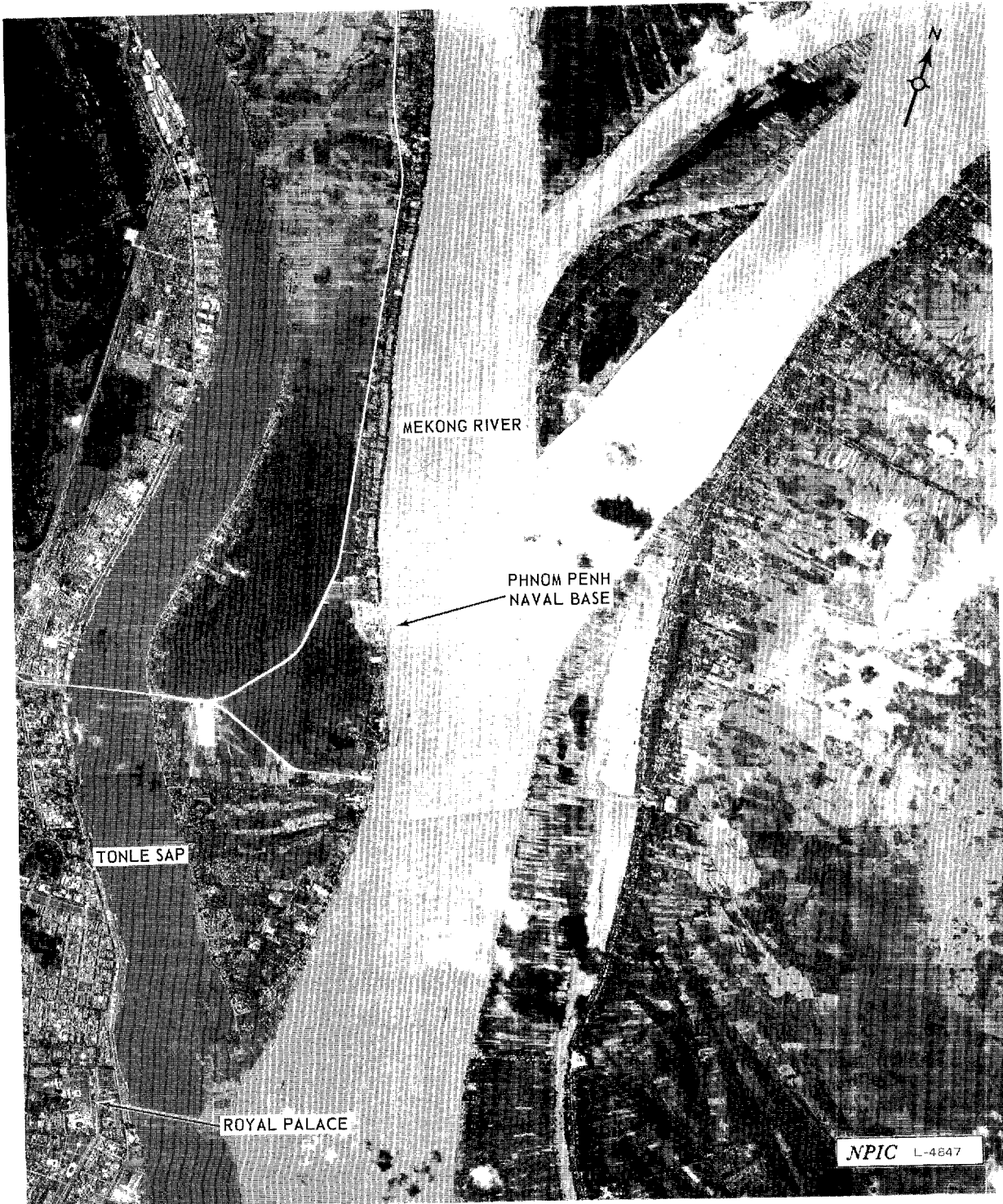


FIGURE 4. AREA PHOTOGRAPH OF PHNOM PENH PORT COMPLEX

NATIONAL PHOTOGRAPHIC INTERPRETATION CENTER

NAME

Phnom Penh Naval Base 25X1D 25X1D

25X1D

COUNTRY	GEO COORDINATES	WAC	REF NO	NPIC NO	COMOR NO
CB	11-35- 104-56-	0739		46M	

25X1C

(C/No For Dissem)
 AMS Series 1501A, NC 48-Z, 13 June 1966, (U) NPIC Project
 11486AC/8

25X1C

On the west bank of the Mekong River on the Chruai Changvar approximately 1.0 nm east of Phnom Penh.

This installation is Cambodia's second most important naval base, capable of providing logistic support and limited repairs to the units normally based at Phnom Penh.

Facilities include 1 T-head pier, 2 quays, 2 small marine railways, 5 storage buildings, 1 H-shaped administration building, and 9 additional support buildings.

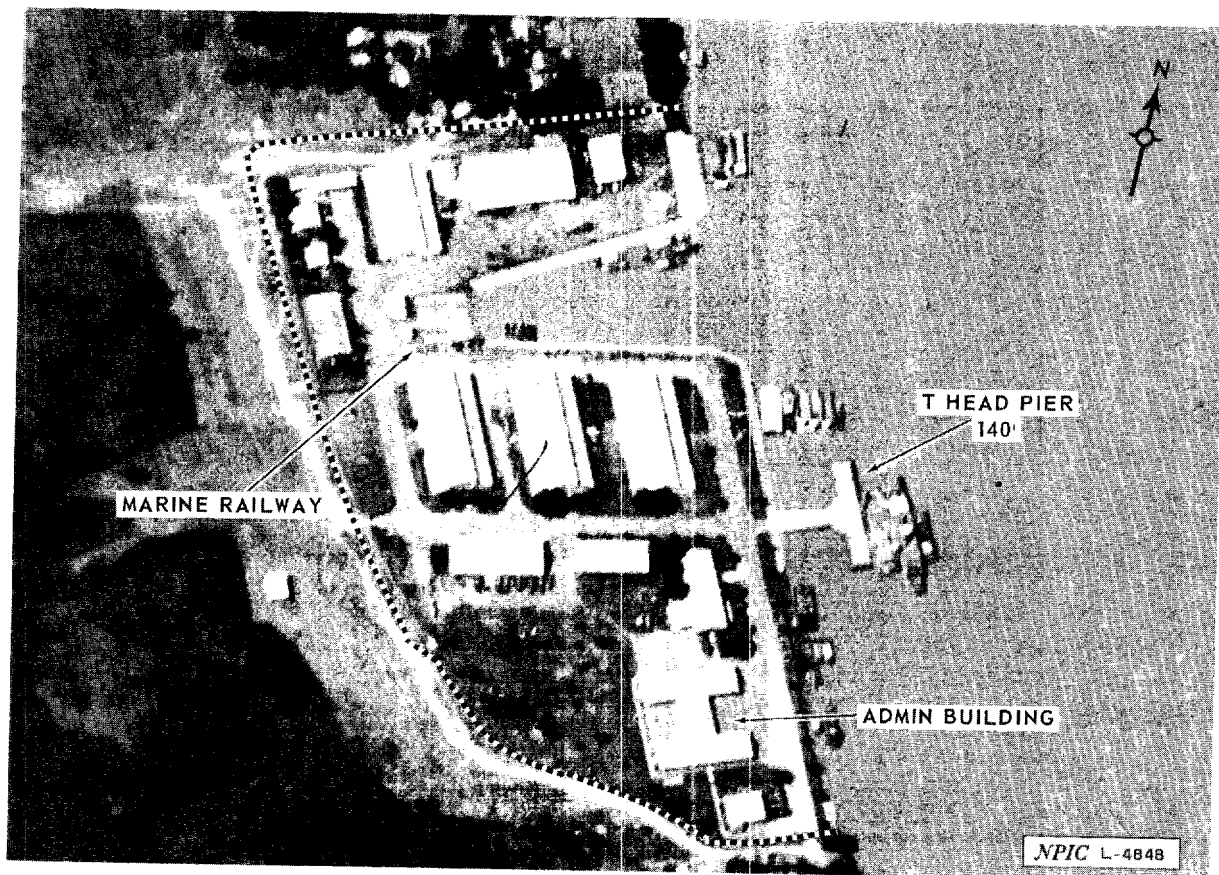


FIGURE 5. PHNOM PENH NAVAL BASE

CONFIDENTIAL
Approved For Release 2001/03/30 : CIA-RDP78B04560A006200010025-3
NO FOREIGN DISSEM [REDACTED] 25X1C

CONFIDENTIAL
Approved For Release 2001/03/30 : CIA-RDP78B04560A006200010025-3
NO FOREIGN DISSEM [REDACTED] 25X1C