

NO FOREIGN DISSEM [REDACTED]
CONFIDENTIAL
LIMITED DISTRIBUTION

PIM

PHOTOGRAPHIC INTERPRETATION MEMORANDUM



PROBABLE VC/NVA ACTIVITY PARROT'S BEAK AREA CAMBODIA

NPIC/R-29/69
MARCH 1969

GROUP 1: EXCLUDED FROM
AUTOMATIC DOWNGRADING
AND DECLASSIFICATION

CONFIDENTIAL 25X1C
NO FOREIGN DISSEM [REDACTED]
LIMITED DISTRIBUTION

WARNING

This document contains information affecting the national defense of the United States, within the meaning of Title 18, sections 793 and 794, of the U.S. Code, as amended. Its transmission or revelation of its contents to or receipt by an unauthorized person is prohibited by law.

PROBABLE VC/NVA ACTIVITY, PARROT'S BEAK AREA, CAMBODIA

25X1D
25X1D The Parrot's Beak area of Cambodia, 41 nautical miles (nm) northwest of Saigon and 14 nm south of Tay Ninh, South Vietnam, has repeatedly been used as a major support and staging area for Communist troops operating in adjacent South Vietnam.* A comparison of photography of [redacted] with photography of [redacted] reveals seven areas of increased probable VC/NVA activity in the northern portion of the Parrot's Beak (Figure 1).

These seven areas are dispersed along a 7-nm segment of the border and penetrate up to 2.6 nm into Cambodia. They contain over 500 buildings, numerous foxholes, automatic weapons (AW) positions, storage pits, probable bunkers, and row crops. An extensive trail network and a system of small waterways provide access between this area of Cambodia and South Vietnam.

25X1D One of the areas is a probable VC/NVA camp (Figures 2 and 3) in a heavily wooded area 4.5 nm northwest of Ph Bavet (1). It contains over 125 [redacted] 25X1D buildings with a perimeter defense of foxholes and AW positions. Heavy ground scars and approximately 55 personnel are also observed. 25X1D A second area is a probable camp just north of Ph O Sam and contains approximately 70 buildings and a triangular probable training site, all constructed since [redacted]

*NPIC R-138/68, Communist Insurgency Parrot's Beak, Cambodia, December 1968, (CONFIDENTIAL/No Foreign Dissem [redacted]) 25X1C



FIGURE 1. LOCATOR MAP WITH TRAILS, ROADS, AND STRONGPOINT.

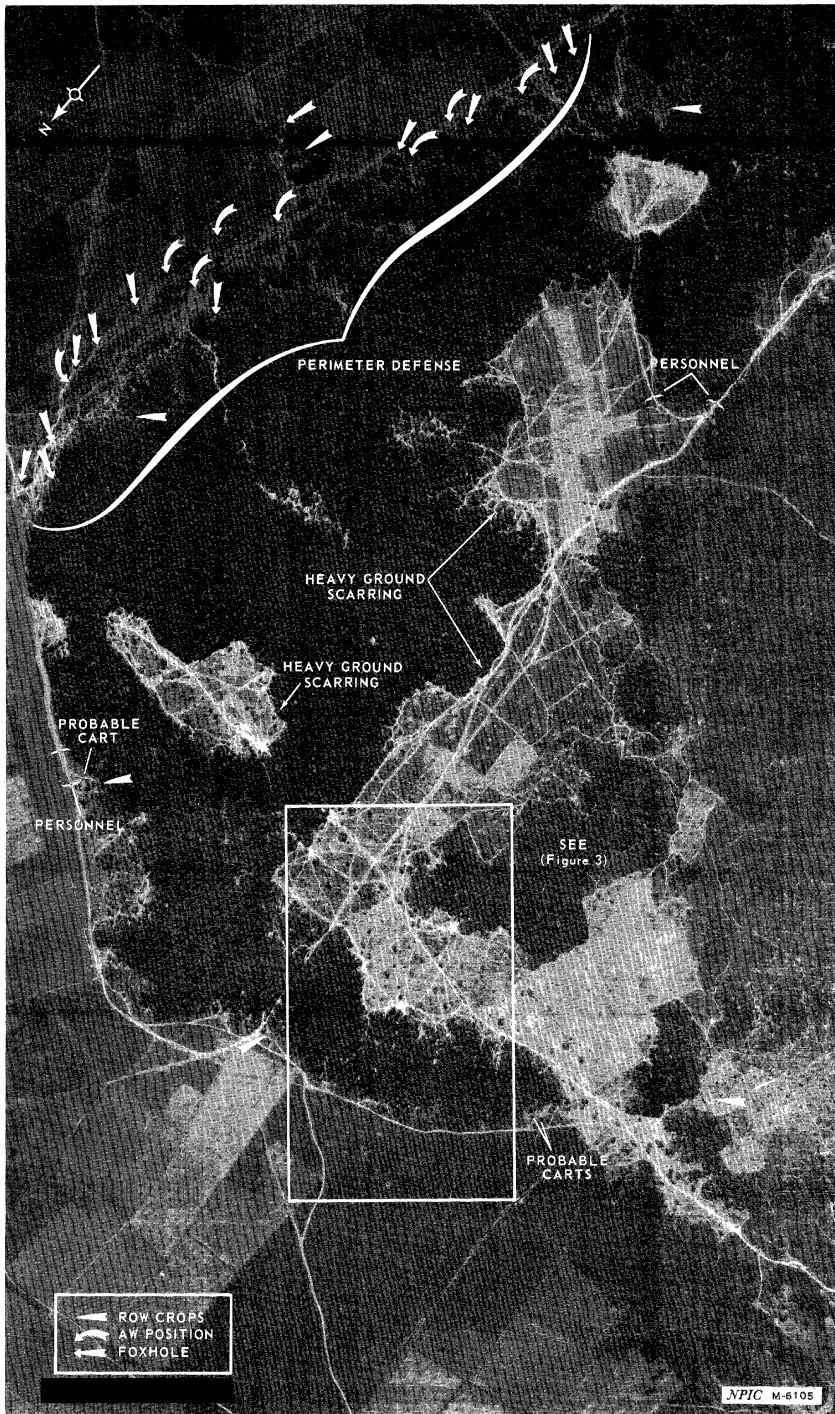
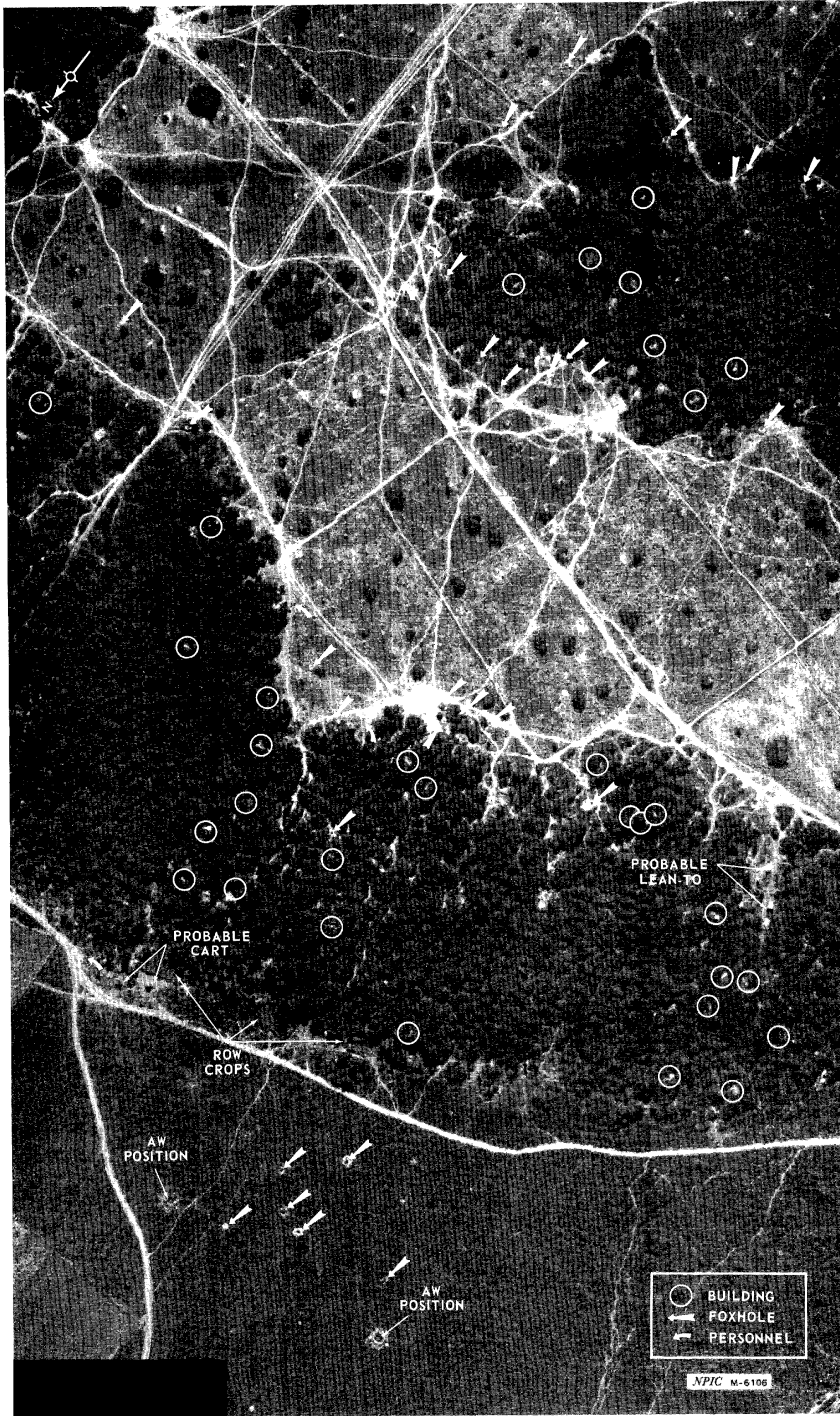


FIGURE 2. PROBABLE VC/NVA CAMP, PARROT'S BEAK AREA, CAMBODIA.

- 2 -

<u>RECIPIENT</u>	<u>NUMBER OF COPIES</u>
JCS/SACSA	1
JCS/J-3	1
DIAXX-1	1
DIAXX-2	1
DIAAP-4A (AHS)	1
DIAAP-4A (PENTAGON)	1
DIAAP-4C	2
DIAAP-9X	1
ACSI DA	1
ONI WATCH OFFICER	1
AFNIECA	1
CINCPAC	3
COMUSMACV	10
7TH AF	1
DIAAP-9C3	1
CHIEF OER/I/L	1
CIA/IAS	1
STATE RM 7812	1
NSA	1
SPAD	1
NPIC	3



25X1D

FIGURE 3. PROBABLE VC/NVA CAMP, PARROT'S BEAK AREA, CAMBODIA.

- 3 -

