

STATINTL

Approved For Release 2000/05/10 : CIA-RDP78B04747A000100120024-2

Approved For Release 2000/05/10 : CIA-RDP78B04747A000100120024-2

- D-19
HTA-5
13 Nov

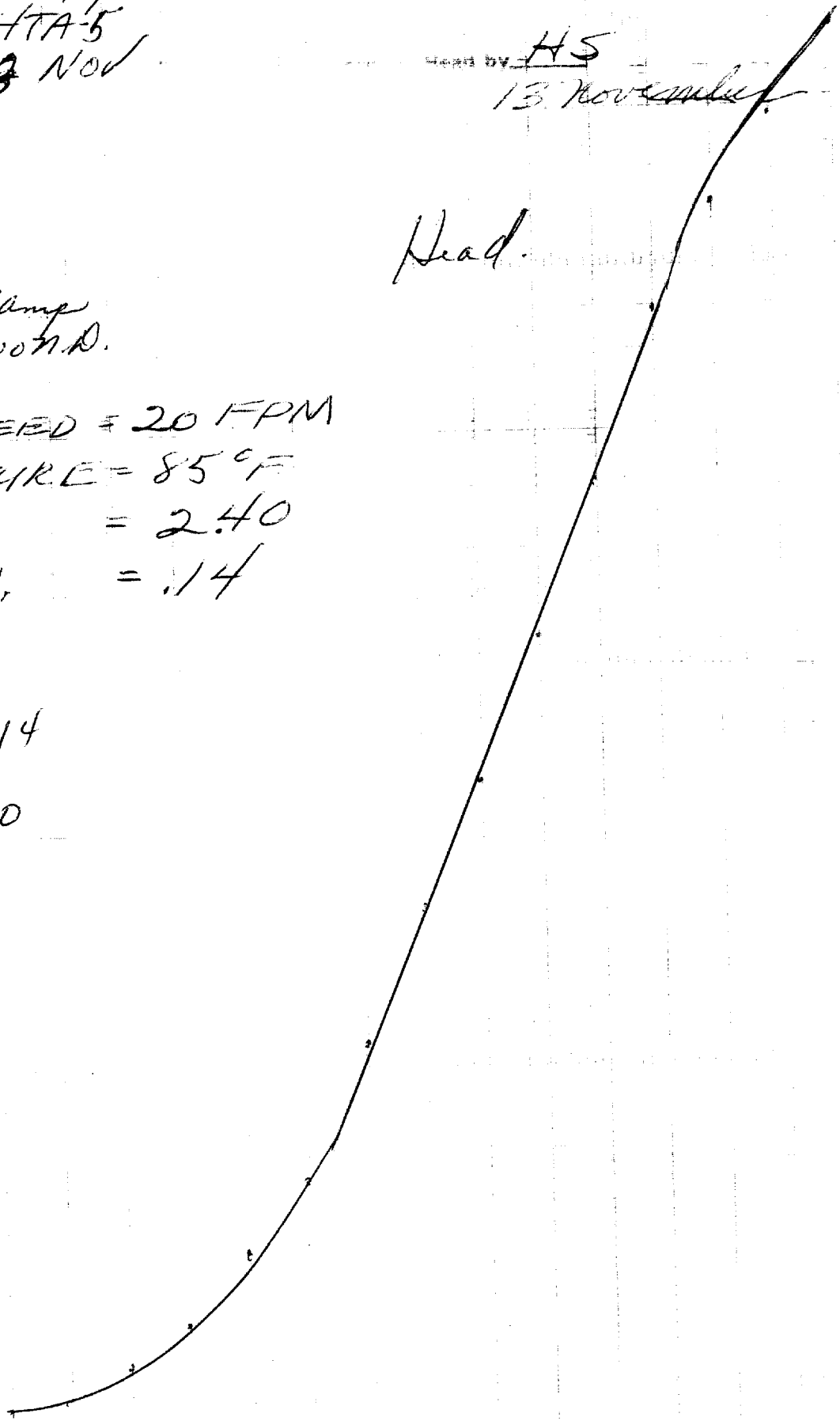
HEAD BY HS
13 November

Emul.: 8402
printed @ .655 amp
with 2.00 A.D.

Head.

MACHINE SPEED = 20 FPM
TEMPERATURE = 85°F
ARC LENGTH = 2.40
BASE DEN. = .14

Base = .14
t = 2.40



STEP #	Strip #1	Strip #2	Strip #3	Strip #4	Strip #5
1	D-19 8402 Strip # 3.60				
2	3.38				
3	3.16				
4	2.89				
5	2.47				
6	2.08				
7	1.72				
8	1.41				
9	1.07				
10	1.72				
11	.55				
12	.36				
13	.27				
14	.18				
15	.16				
16	.14				
17	.14				
18					
19					
20					
21					

HTA-5
D-19
6 NOV 63

6 Nov 63

Film used: 50 8401

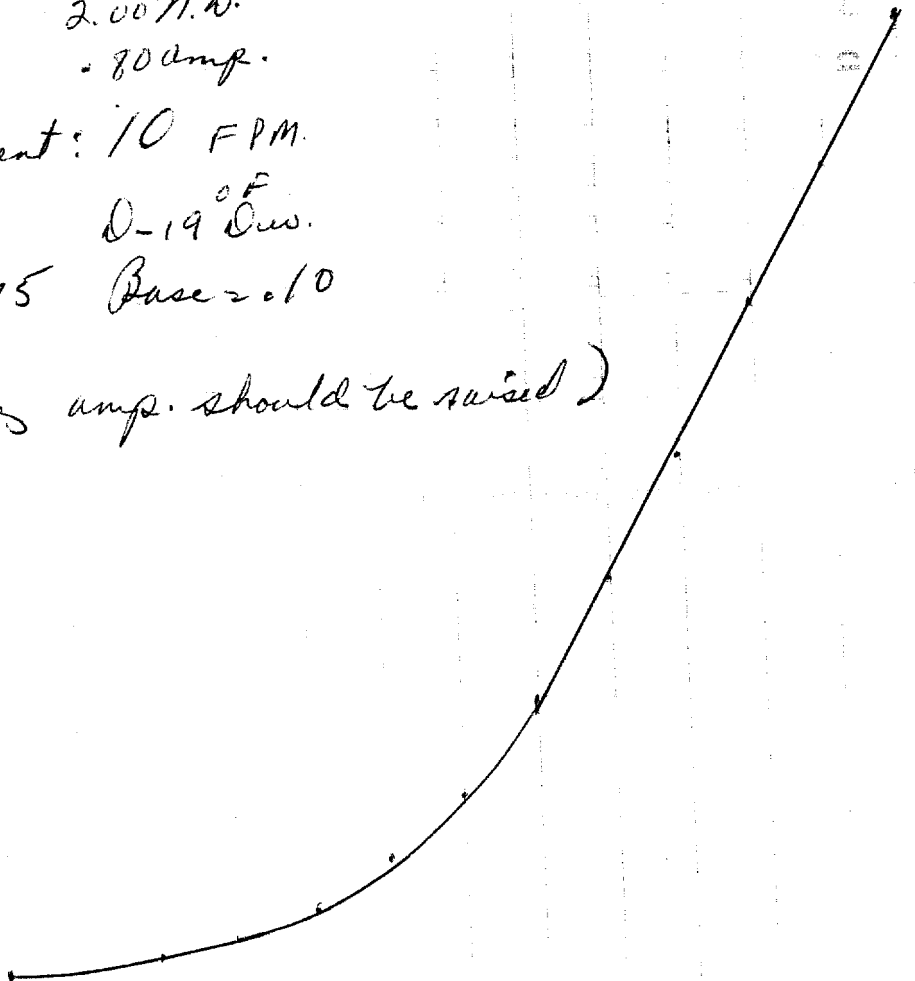
Exposure: M-101 Sensitometer
1/5 Sec.
2.0071 D.
80 amp.

Development: 10 FPM.

D-19^{0F} Dev.

to 1.75 Base = 10

(printing amp. should be raised)



D-19
HTA-5
6 Nov

16 Nov 63.

Film used: Kodak Super XX (SO 5425)

Exposure: M-101 densitometer

1/5 sec.

2.00 m.d.

.80 amp.

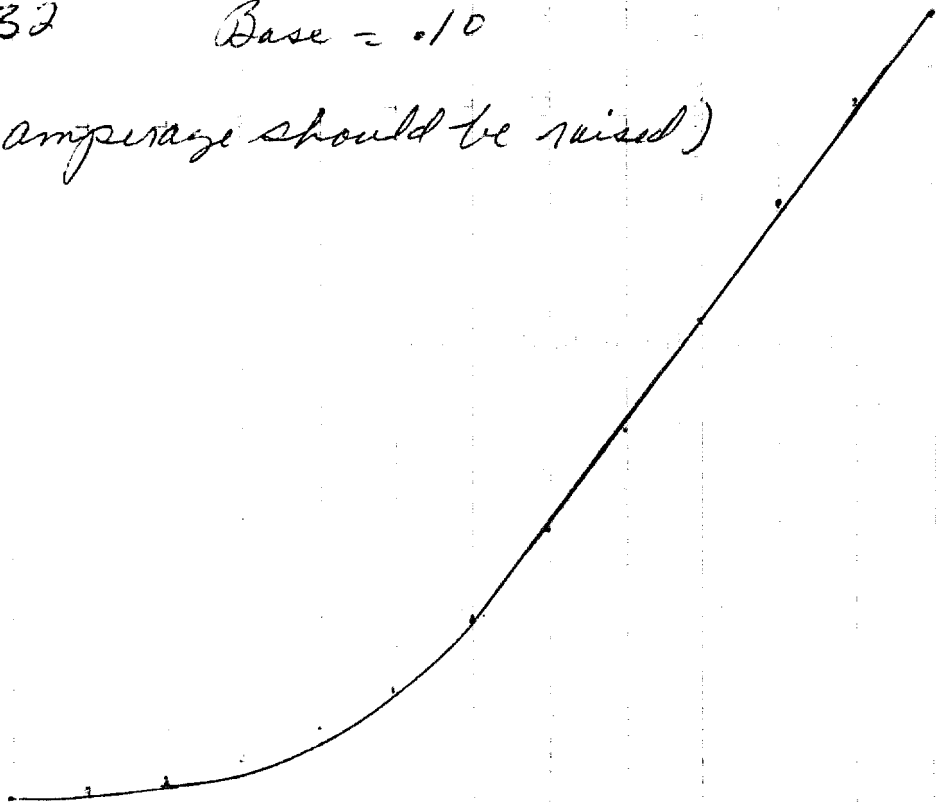
Development: 10 F.P.M.

D-19^{°F.} Dev.

$t = 1.32$

Base = .10

(printing ampersage should be raised)



50-278

M101

HTA-5

0230

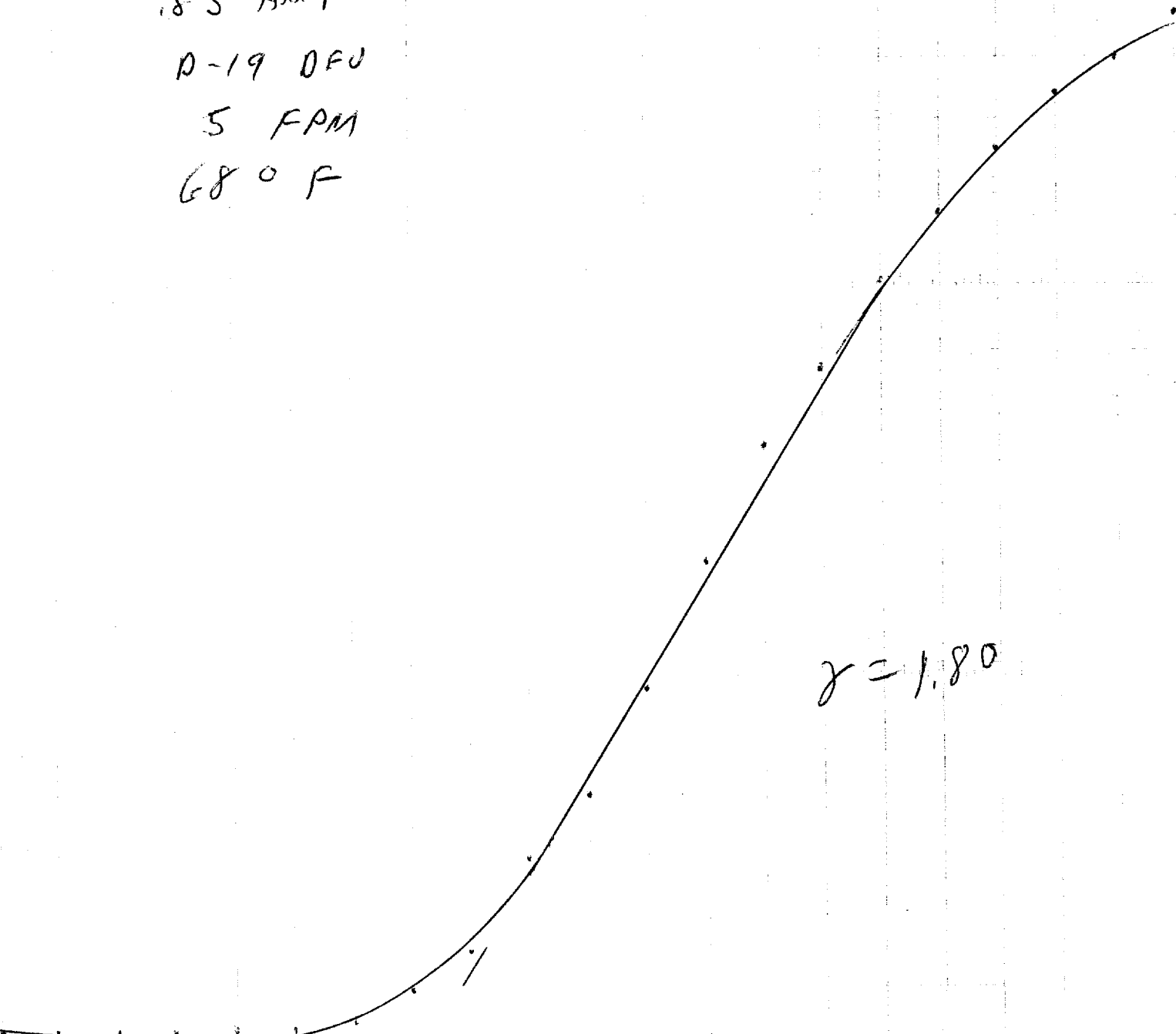
.2

2 NOV 63

STATOTHR

2 NOV 63

50 278
.10 ND
.85 AMP
D-19 OFU
5 FPM
68° F



50-8402

M101

HTA-5
0230

.2
2 NOV 63

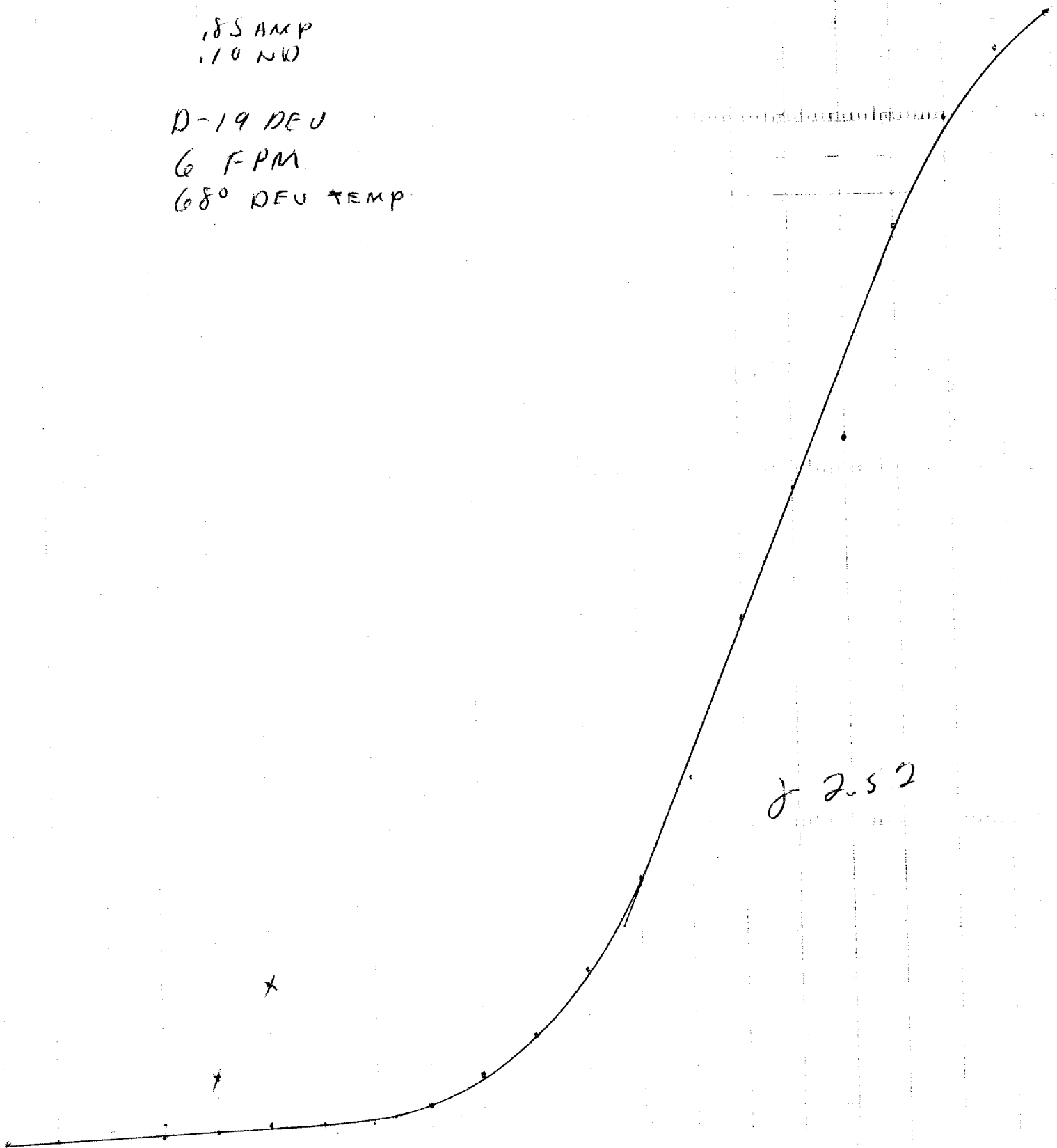
STATOTHR



2 NOV 63

.85 AMP
.10 NW

D-19 DEU
6 FPM
68° DEU TEMP

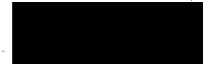


50-278

HTA-5
0130

12
2 NOV 63

STATOTHR



2 NOV 63

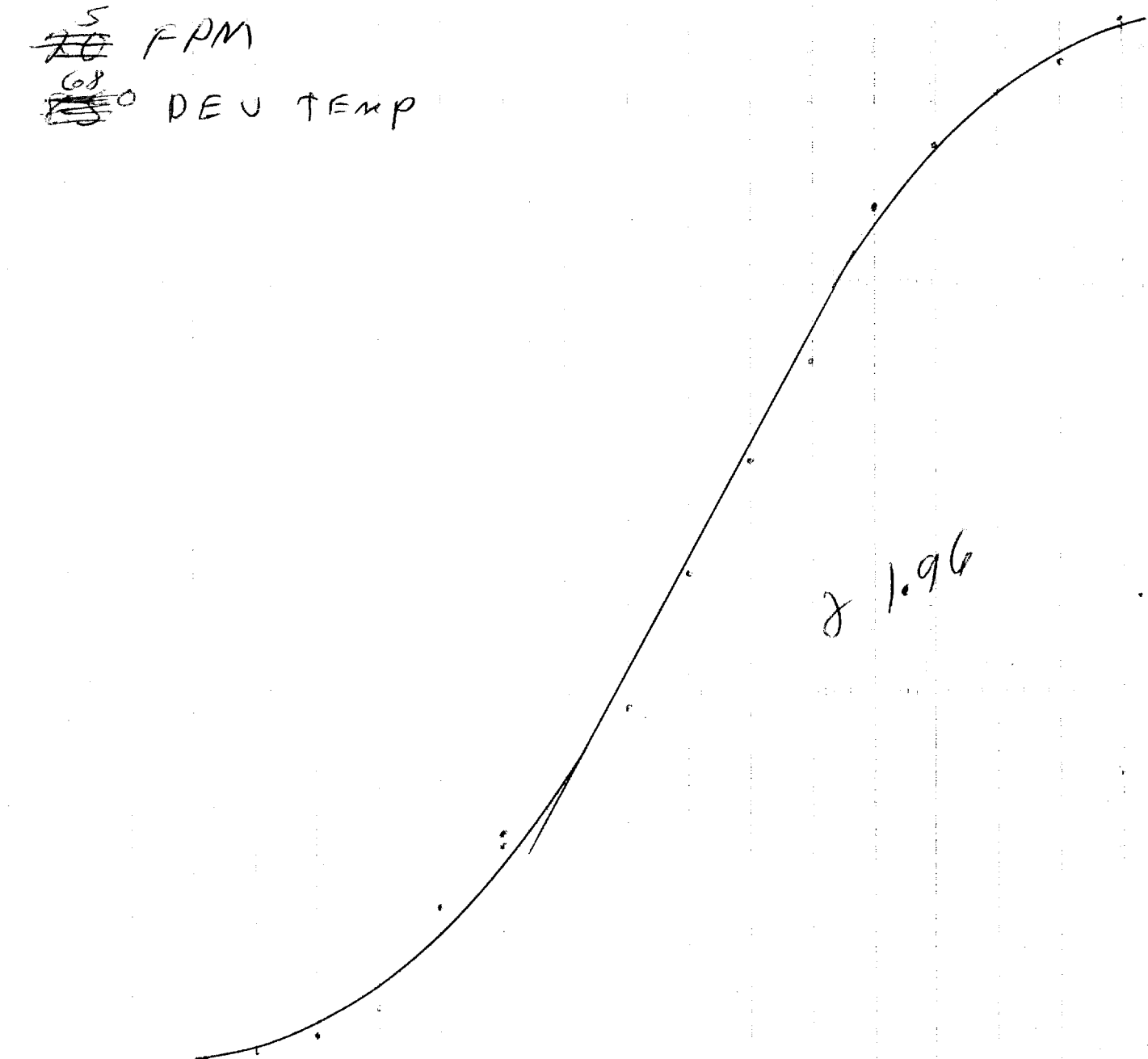
.85 AMP

.10 ND

D-19 DEU

~~70~~⁵ FPM

~~68~~⁵ DEU TEMP



2 1.96

50-8402

M161

HTA/S

0130

.2

2 NOV 63

STATOTHR

2 NOV 63

.85 AMP

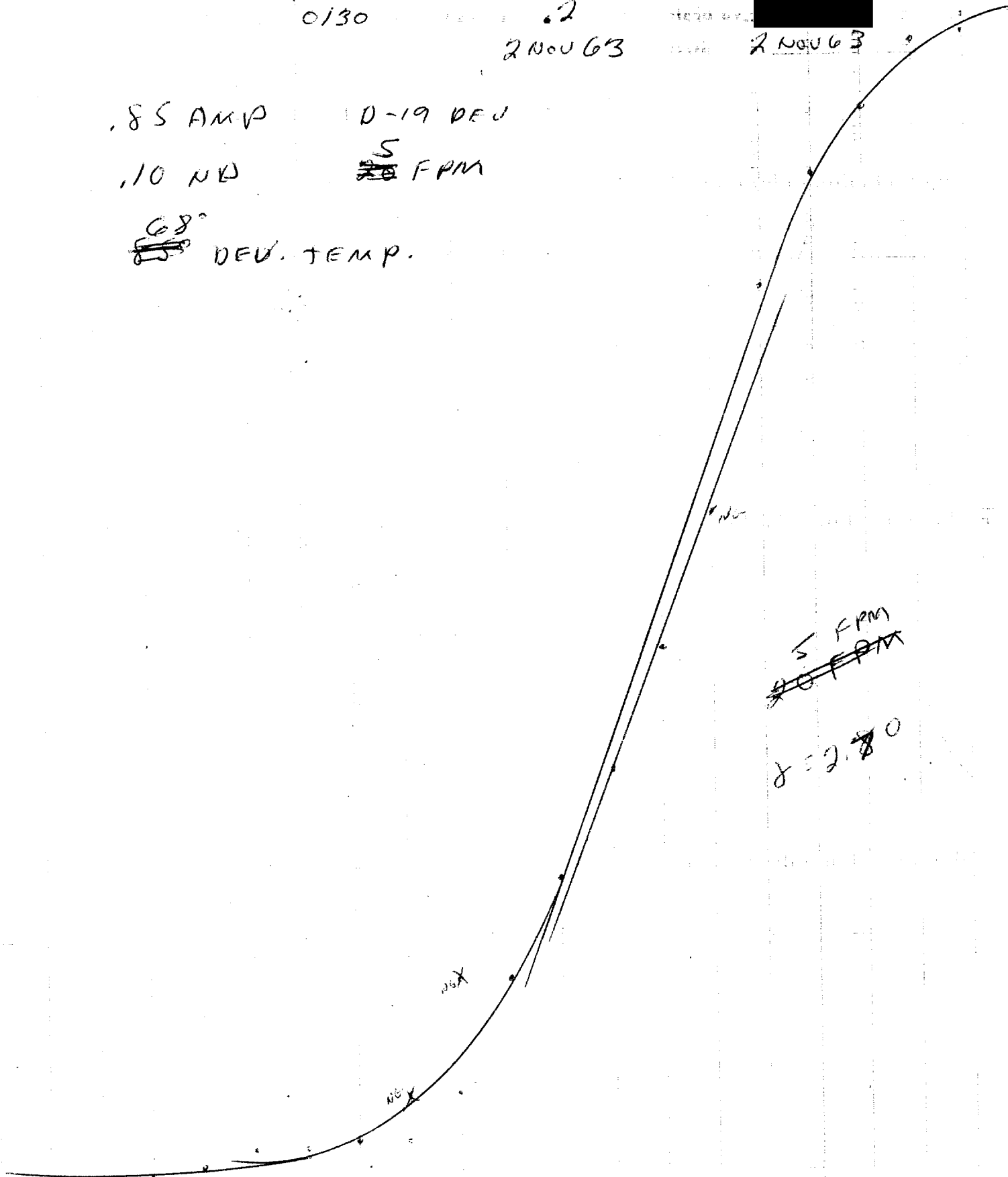
D-19 DEV

.10 NB

~~20~~ 5 FPM

~~68~~

DEV. TEMP.



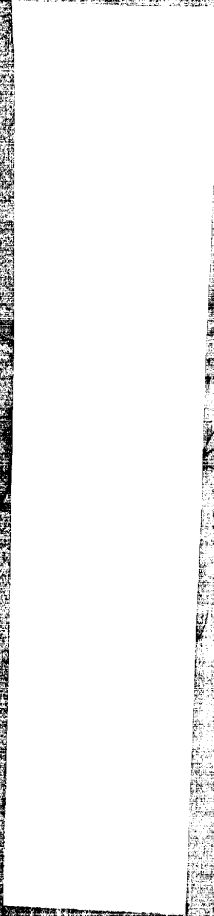
STATOTHR

D-19 DEVELOPER 2400 hr 2 Nov To 1200hr 3 Nov

QC	QC	QC	QC	QC
8402 = 0130	278 - 0130	8402 = 0230	278 = 0230	
Strip # 2.47	Strip # 2.66	Strip # 23.30	Strip # 12.70	Strip # 5
3.46	2.56	3.20	2.60	
3.43	2.46	3.00	2.40	
3.23	2.35	2.70	2.36	
3.03	2.20	2.10	2.20	
2.51	1.82	1.96	2.02	
2.05	1.57	1.60	1.80	
1.65	1.30	1.12	1.60	
1.30	.97	.86	1.30	
.98	.78	.60	.98	
.68	.63	.42	.70	
.34	.47	.30	.52	
.33	.23	.22	.30	
.20	.16	.19	.20	
.18	.11	.18	.12	
.18	.10	.17	.10	
.12	.09	.15	.10	
.11	.08	.15	.10	
.10	.08	.14	.10	
.10	.08	.14	.10	
.10	.08	.13	.10	

BEST COPY

AVAILABLE



2 NOV 63

ALTA

SOX

SEED

MIAMI PROFESSOR
IN HTA-5 - D-19 SOL
2 NOV 63
STATIE CHEM

50-8402

1 NOV

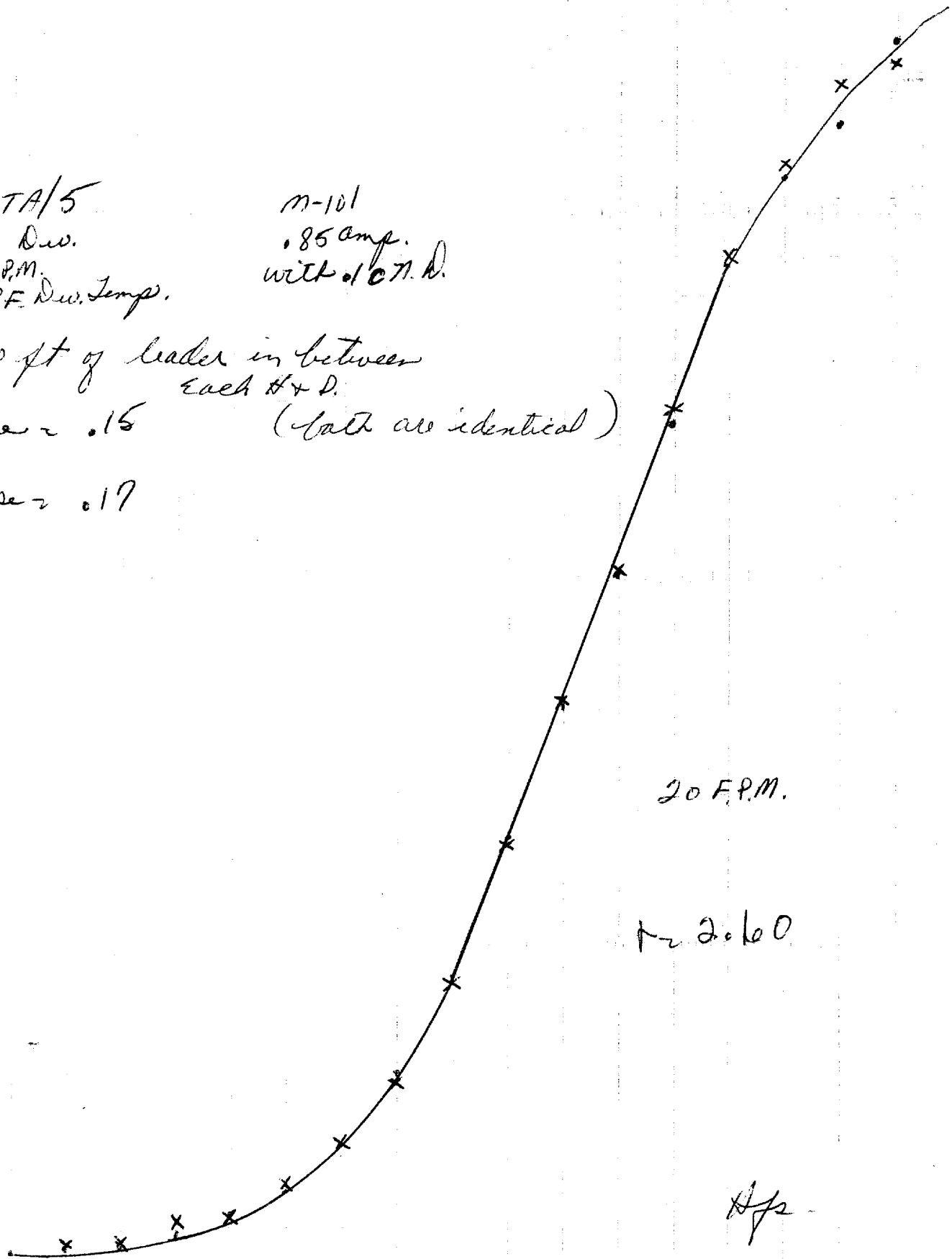
HTA/5
D-19 Div.
20 F.P.M.
85°F Div. Temp.

m-101
.85 amp.
with .107 D.

200 ft of leader in between
each #4 D.

Base ~ .15 (both are identical)

Base ~ .17



20 F.P.M.

$t \approx 2.60$

Hjs

S.O. 278

M-101

• 85 amp.

• 107. D.

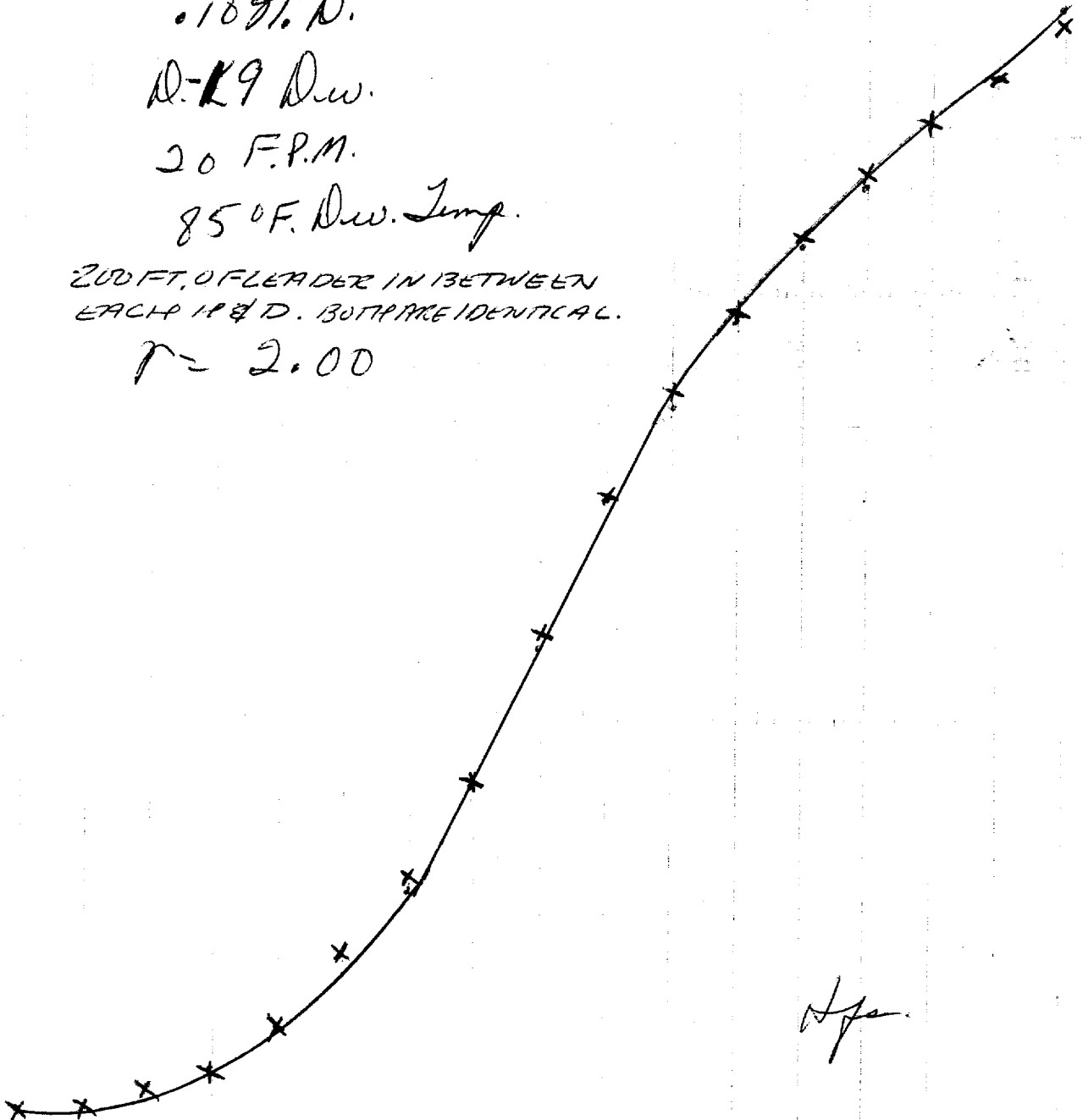
D-19 Dw.

20 F.P.M.

85° F. Dw. Temp.

200 FT. OF LEADER IN BETWEEN
EACH 1/8" D. BOTH ARE IDENTICAL.

$r = 2.00$



Handwritten signature

D-19 DEVELOPER 1200 hrs To 2400 1 Nov
 STATZER QC

	279 = 2400 Strip # 2	8402 = 2400 Strip # 5	Strip # 3	Strip # 4	Strip # 5
1	2.65	3.50			
2	2.52	3.26			
3	2.40	3.12			
4	2.25	2.88			
5	2.12	2.43			
6	1.97	2.02			
7	1.75	1.64			
8	1.53	1.30			
9	1.18	.90			
10	.86	.65			
11	.60	.44			
12	.45	.32			
13	.25	.24			
14	.18	.20			
15	.12	.16			
16	.09	.15			
17	.09	.14			
18	.09	.14			
19	.09	.14			
20	.09	.14			
21	.09	.14			

Oct 30

HTA/5

M-101

.85 amp.

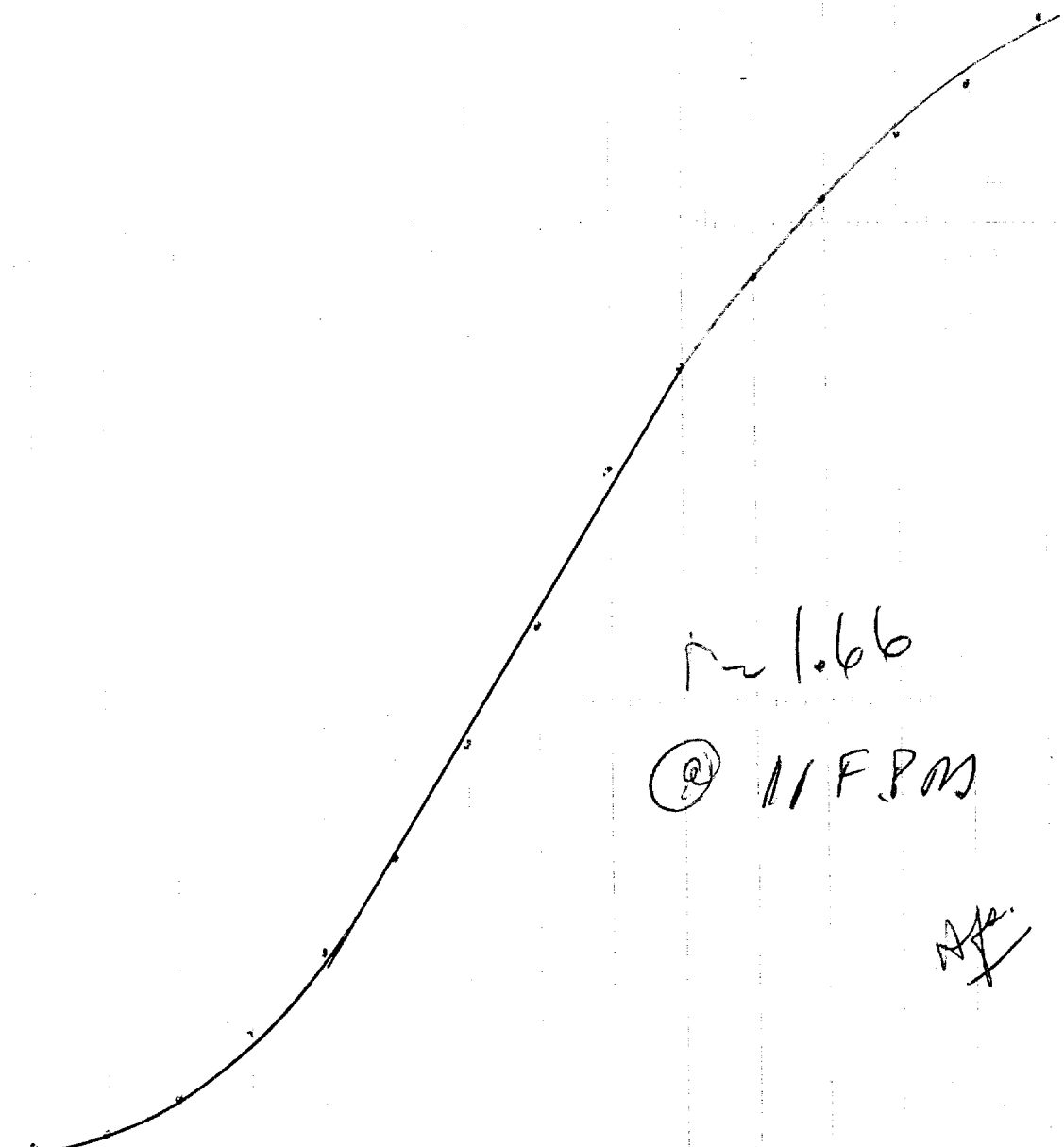
1/5 sec.

10 M.D.

SO 278

75° F Dew Temp.

AK-50



$r = 1.66$

⊙ 11 FPM

[Handwritten signature]

30 041

HTA/S

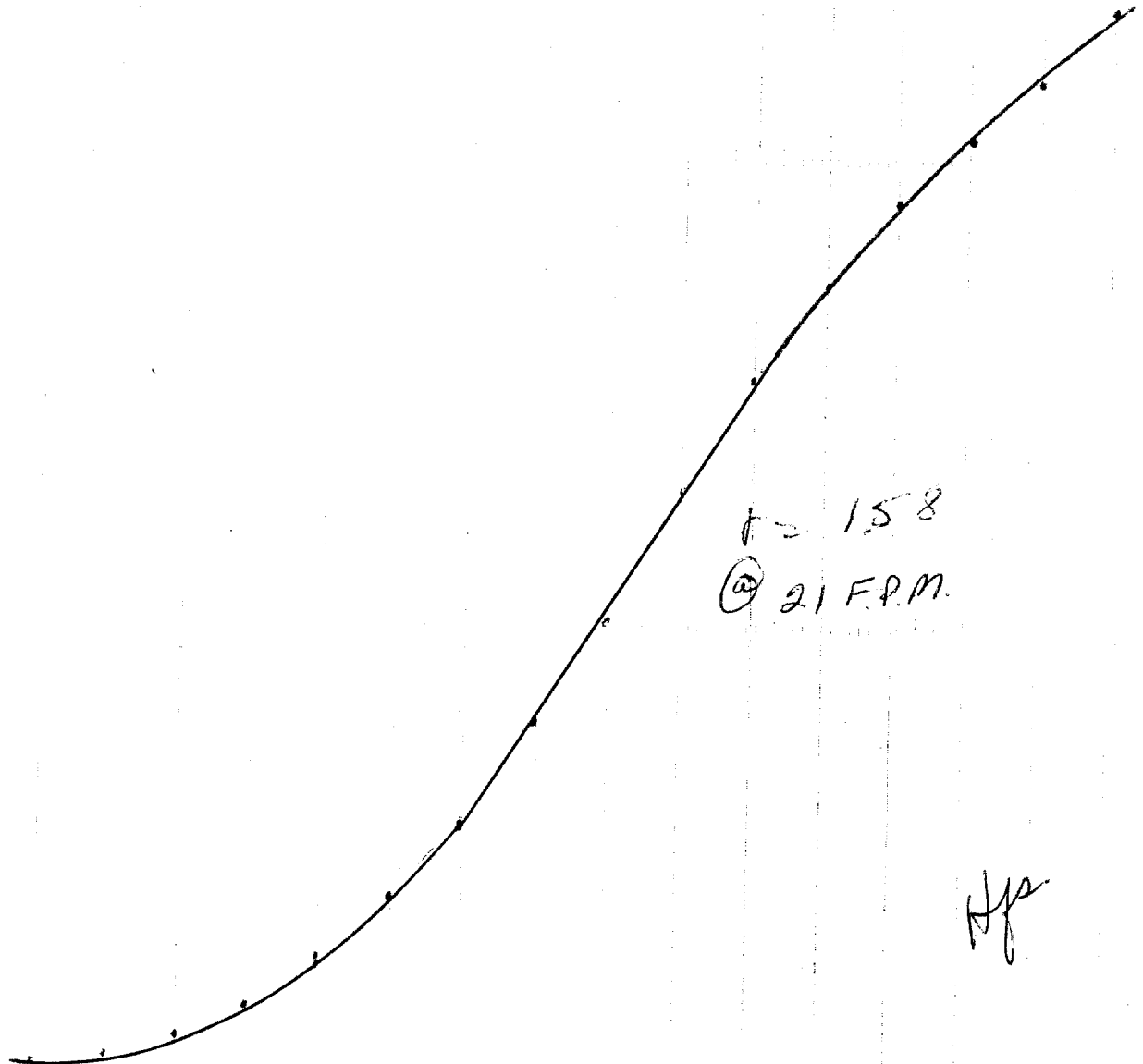
n-101

85 amp

1/5 sec

0.1077 D.

75° Dew Temp.
S.O. 278
D.K. 50
21 F.P.M.



30 Oct.

17A/5

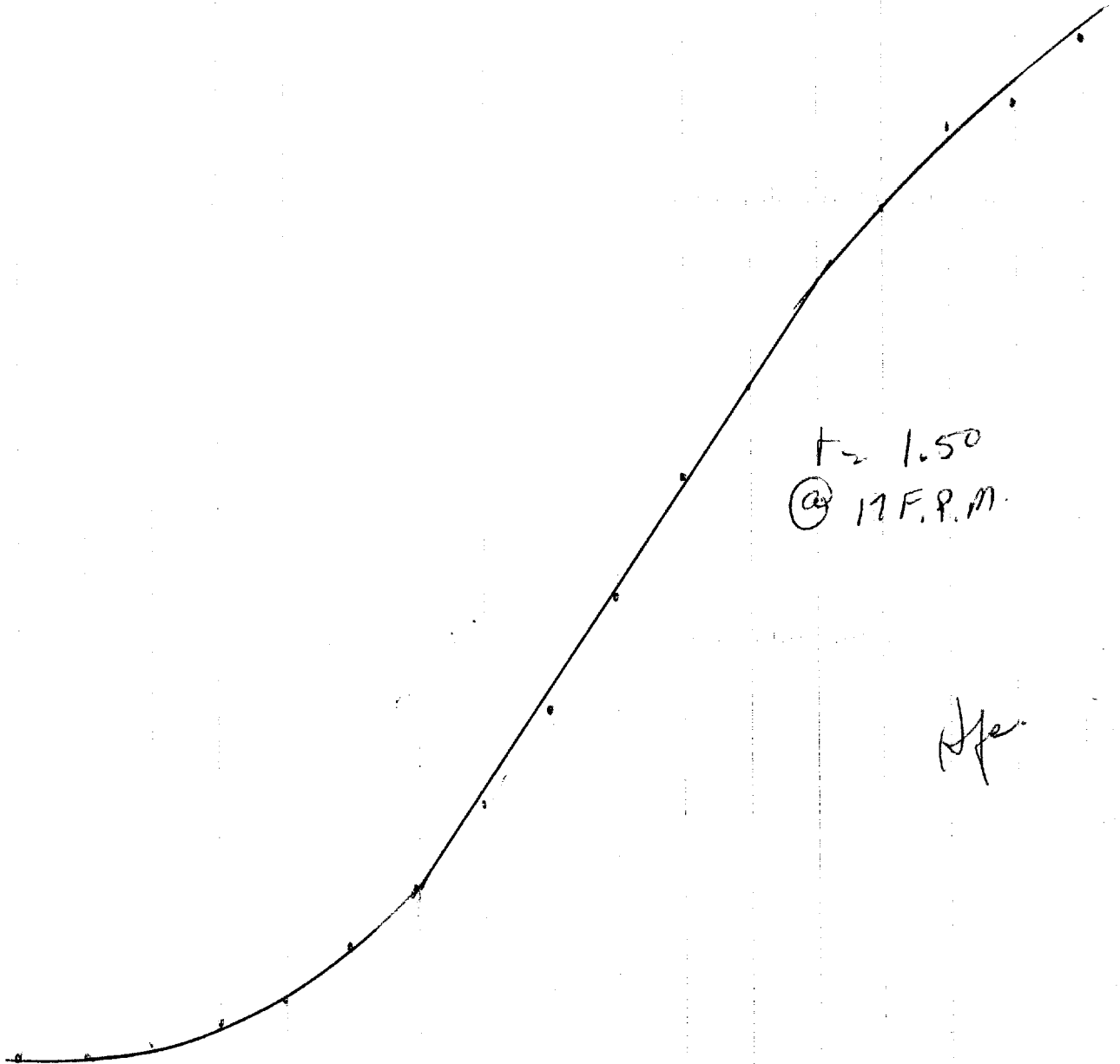
m-101

.85 Amp.

1/5 sec

— .1077 D.

75° Dew. Temp.
S.O. 279
D.K-50
17 F.P.M.



$t = 1.50$
① 17 F.P.M.

Aje.

	Strip # 1	Strip # 2	Strip # 3	Average Strip # 4	Strip # 5
1	2.38	2.37	2.38	2.38	
2	2.22	2.22	2.24	2.23	
3	2.16	2.19	2.16	2.18	
4	1.98	1.98	2.00	1.99	
5	1.81	1.80	1.82	1.81	
6	1.58	1.57	1.62	1.59	
7	1.38	1.39	1.40	1.39	
8	1.10	1.11	1.12	1.11	
9	.85	.85	.86	.85	
10	.63	.62	.64	.63	
11	.40	.45	.46	.44	
12	.30	.30	.31	.30	
13	.18	.16	.19	.18	
14	.12	.13	.13	.13	
15	.08	.09	.09	.09	
16	.06	.06	.06	.06	
17	.05	.05	.05	.05	
18					
19					
20					
21					
22					
23					
24					
25					

30 Oct

M-101

85 Amp.

1/5 sec

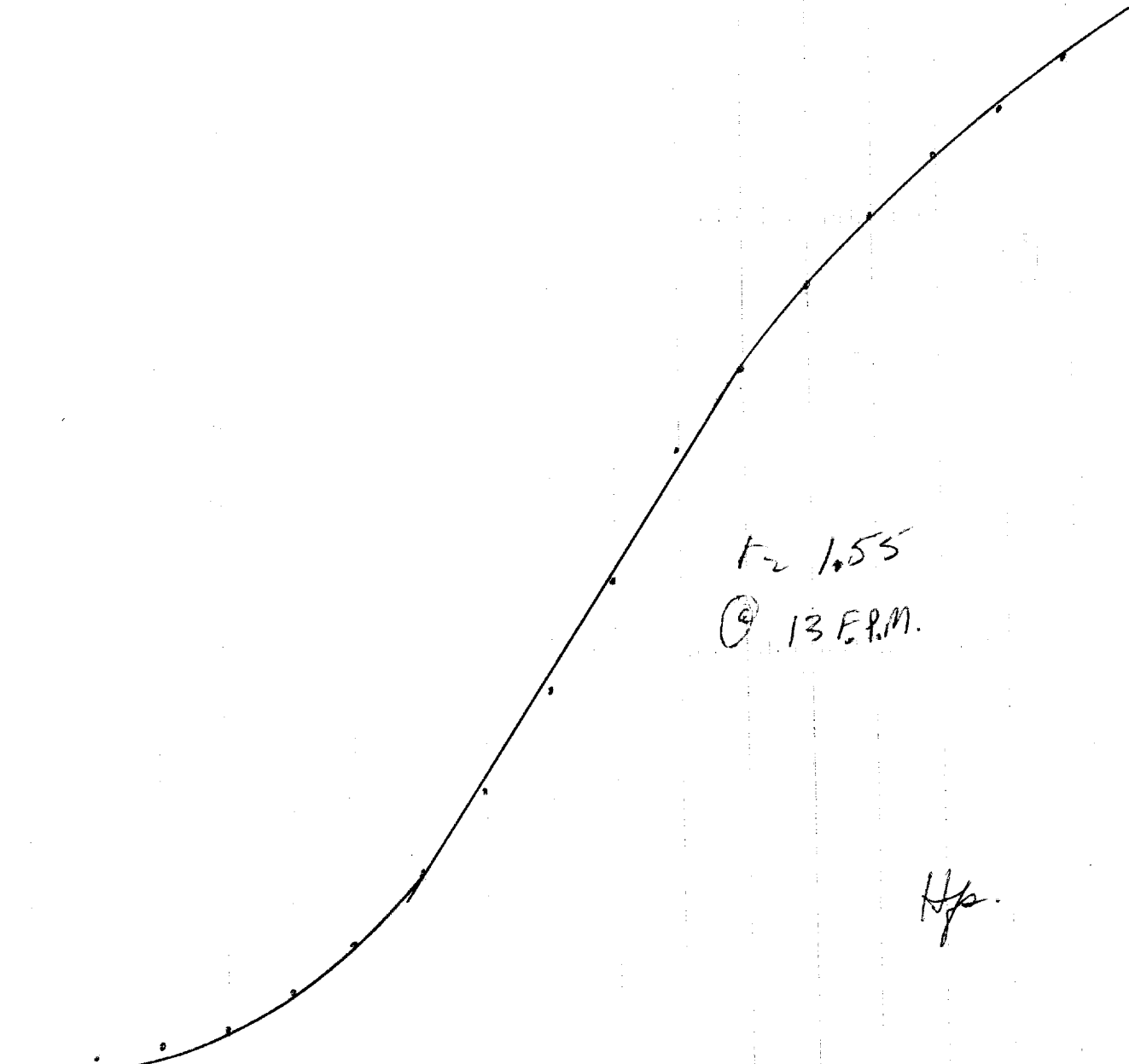
— 107.0.

75° Dew. Temp.

S.O. 278

D. K-50

13 FPM



F = 1.55
© 13 F.P.M.

H.P.

	Strip # 1	Strip # 2	Strip # 3	Average Strip # 4	Strip # 5
1	2.35	2.38	2.40	2.38	.
2	2.24	2.26	2.28	2.26	.
3	2.14	2.14	2.18	2.16	.
4	2.00	2.00	2.02	2.01	.
5	1.85	1.85	1.88	1.86	.
6	1.68	1.66	1.65	1.66	.
7	1.48	1.46	1.48	1.48	.
8	1.18	1.19	1.15	1.18	.
9	.90	.92	.95	.92	.
10	.70	.69	.68	.69	.
11	.50	.50	.50	.50	.
12	.34	.34	.35	.34	.
13	.24	.22	.23	.23	.
14	.14	.13	.14	.14	.
15	.10	.10	.10	.10	.
16	.08	.07	.08	.08	.
17	.06	.05	.06	.06	.
18
19
20
21
22
23
24
25

30 Oct

HTA/5

m-101

.25 amp

15 sec

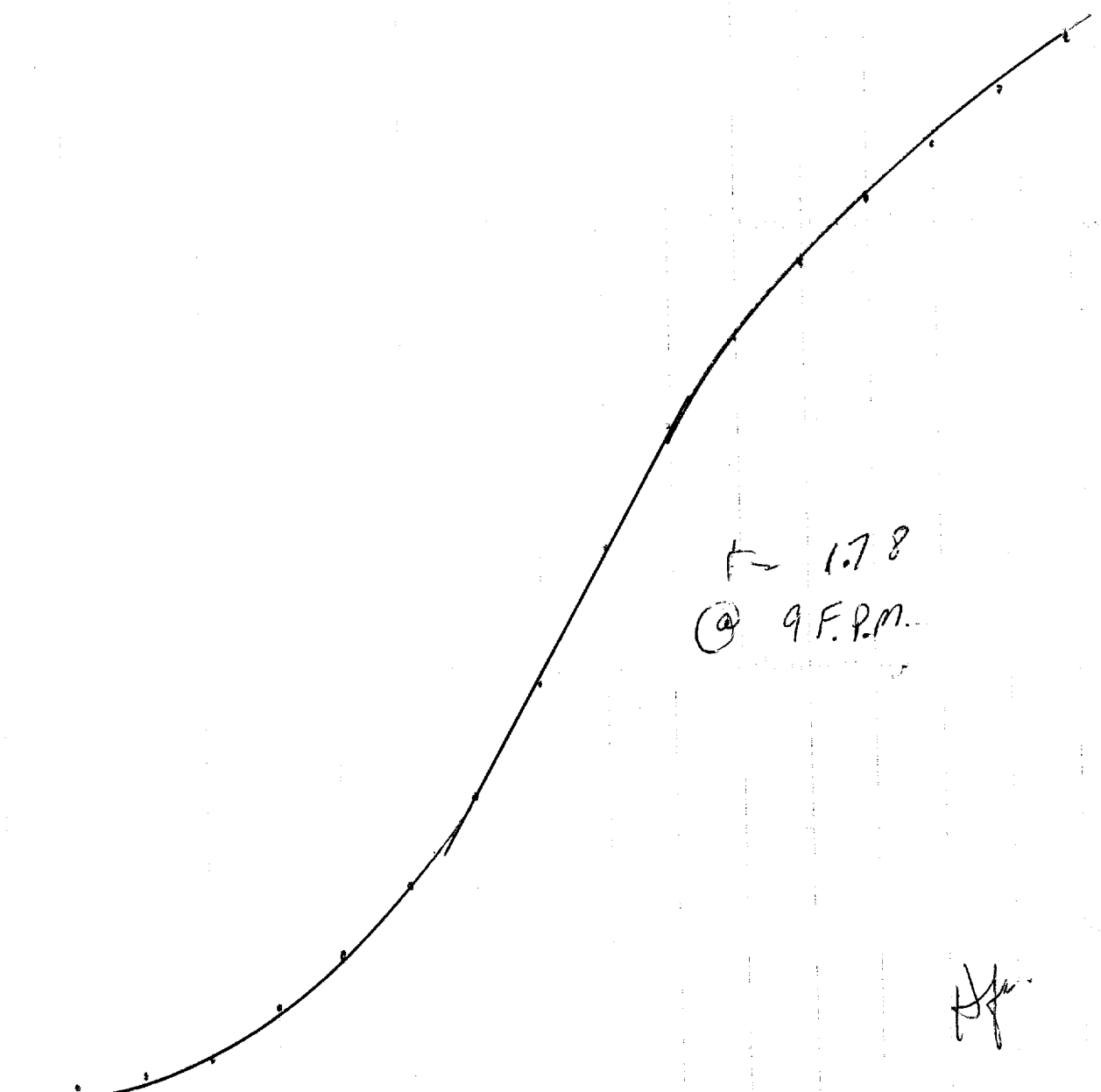
.1077 D.

75° Dev. Temp.

S. O. 278

D. K. 50

9 F.P.M.



f = 1.78
@ 9 F.P.M.

H. J.

Strip # 1	Strip # 2	Strip # 3	Average Strip # 4	Strip # 5
2.38	2.37	2.46	2.42	
2.28	2.30	2.34	2.31	
2.18	2.18	2.22	2.19	
2.06	2.05	2.11	2.07	
1.91	1.92	1.95	1.92	
1.74	1.75	1.77	1.76	
1.55	1.55	1.58	1.56	
1.28	1.29	1.29	1.29	
.98	.98	.98	.98	
.72	.72	.72	.72	
.53	.52	.52	.53	
.36	.37	.38	.37	
.24	.25	.25	.25	
.14	.12	.16	.14	
.10	.09	.11	.10	
.08	.07	.08	.08	
.05	.06	.06	.06	

HTA/5

m-101

.85 amp.

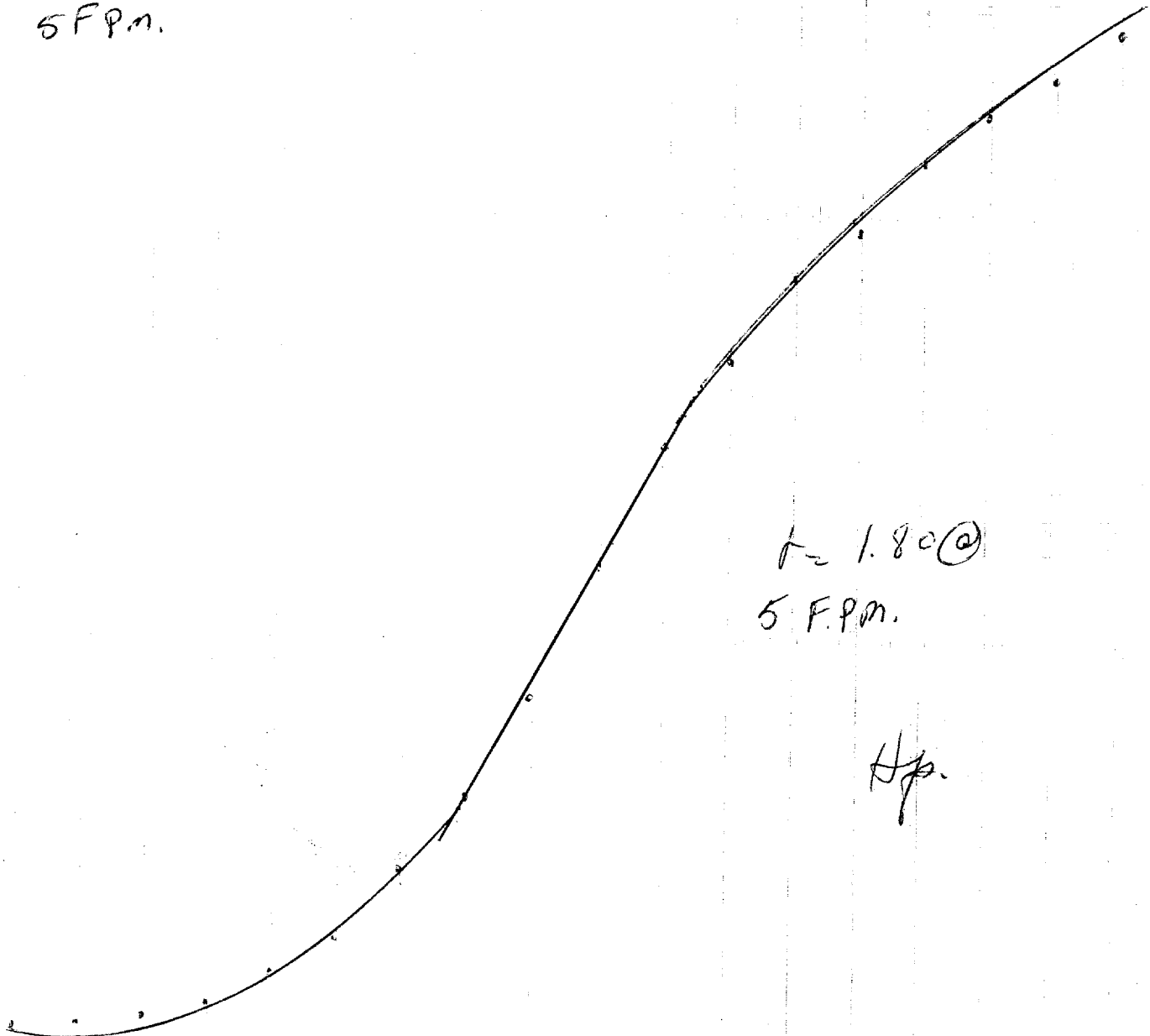
1/5 sec.

— .1077.D.

95° Duv. Temp.
S.O. 278

D.K-50

5 F.P.M.



t = 1.80 @
5 F.P.M.

Hpa.

	Strip # 244	Strip # 247	Strip # 245	Average Strip # 245	Strip # 5
1					
2	2.33	2.35	2.36	2.35	
3	2.20	2.22	2.28	2.25	
4	2.14	2.14	2.16	2.15	
5	1.96	2.02	2.02	1.98	
6	1.85	1.86	1.88	1.87	
7	1.66	1.66	1.68	1.67	
8	1.58	1.74			
9	1.46	1.48	1.44	1.46	
10	1.19	1.18	1.16	1.18	
11	.89	.87	.85	.87	
12	.62	.64	.62	.63	
13	.46	.46	.46	.46	
14	.30	.28	.29	.29	
15	.21	.22	.21	.21	
16	.13	.14	.13	.13	
17	.10	.10	.11	.10	
18	.07	.08	.08	.08	
19	.06	.07	.07	.07	
20					
21					

29 Oct.

HTA/S

nt-10

85 Amp

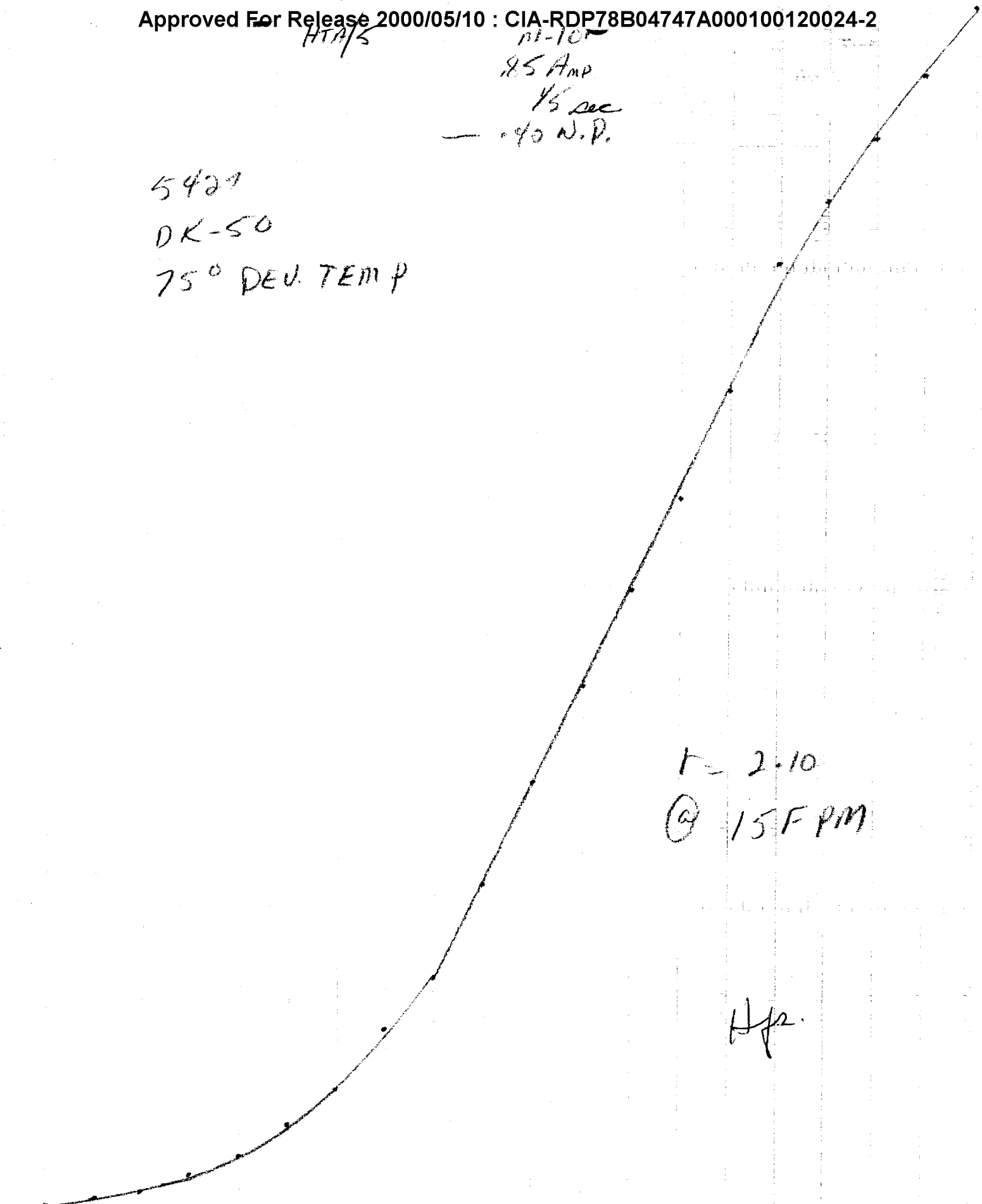
1/5 sec

- 40 N.P.

5427

DK-50

75° DEV. TEMP



T = 2.10

Ⓞ 15 FPM

Hpr.

15 FPM

5427

DK-50

	Strip #1	Strip #2	Strip #3	Strip #4	Strip #5
1	3.82	3.84	3.82	3.83	
2	3.62	3.64	3.58	3.62	
3	3.42	3.46	3.40	3.42	
4	3.22	3.24	3.18	3.22	
5	3.06	3.02	2.98	3.02	
6	2.60	2.66	2.61	2.63	
7	2.28	2.31	2.28	2.29	
8	2.00	2.01	1.99	2.00	
9	1.70	1.71	1.68	1.70	
10	1.40	1.41	1.38	1.40	
11	1.06	1.10	1.06	1.08	
12	.78	.83	.82	.79	
13	.60	.63	.62	.62	
14	.42	.40	.43	.43	
15	.32	.32	.31	.32	
16	.22	.22	.21	.22	
17	.16	.16	.14	.16	
18	.10	.10	.10	.10	
19	.08	.08	.08	.08	
20	.06	.06	.06	.06	
21	.06	.06	.06	.06	

29 Oct.

HIP/S

m-101

85 amp.

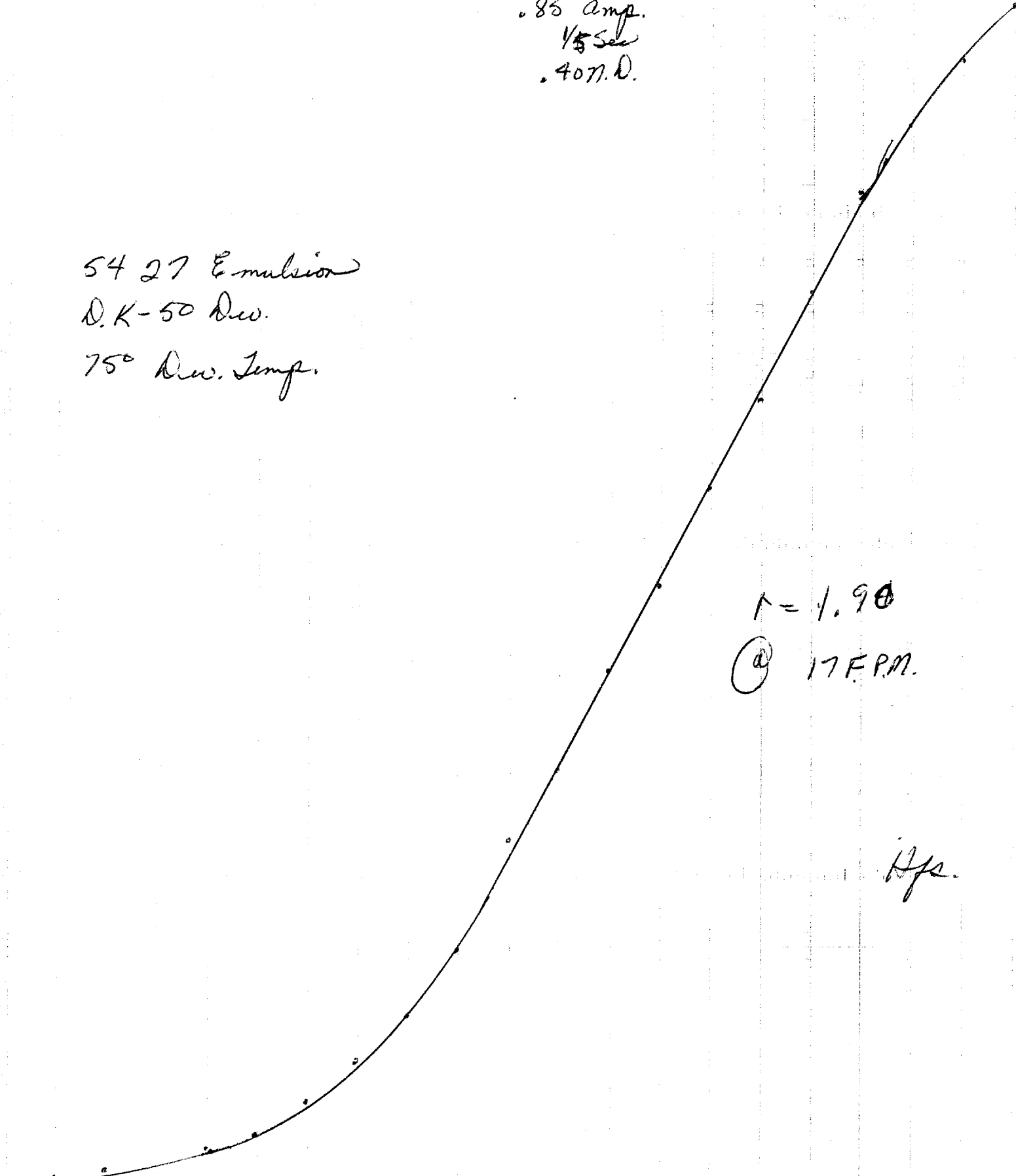
1/5 Sec

407.0.

54 27 Emulsion

D.K-50 Dev.

75° Dev. Temp.



$r = 1.90$

ⓐ 17 F.P.M.

Hys.

750 D.T.

779247M

5427
OK-50
Strip # 5

Strip #	Strip #1	Strip #2	Strip #3	Strip #4	Strip #5
1	3.72	3.64	3.64	3.65	
2	3.52	3.42	3.50	3.49	
3	3.34	3.22	3.32	3.28	
4	3.12	3.04	3.10	3.08	
5	2.85	2.72	2.84	2.78	
6	2.52	2.42	2.48	2.46	
7	2.22	2.16	2.18	2.18	
8	1.92	1.88	1.88	1.89	
9	1.66	1.62	1.62	1.63	
10	1.38	1.32	1.30	1.33	
11	1.14	1.12	1.10	1.12	
12	.78	.78	.77	.78	
13	.60	.58	.57	.58	
14	.44	.44	.43	.44	
15	.32	.32	.30	.32	
16	.22	.21	.21	.22	
17	.17	.18	.18	.18	
18	.11	.10	.10	.10	
19	.08	.09	.08	.08	
Base	.06	.06	.06	.06	

29 Oct.

H77/5

m-10'

1.85 Amp.

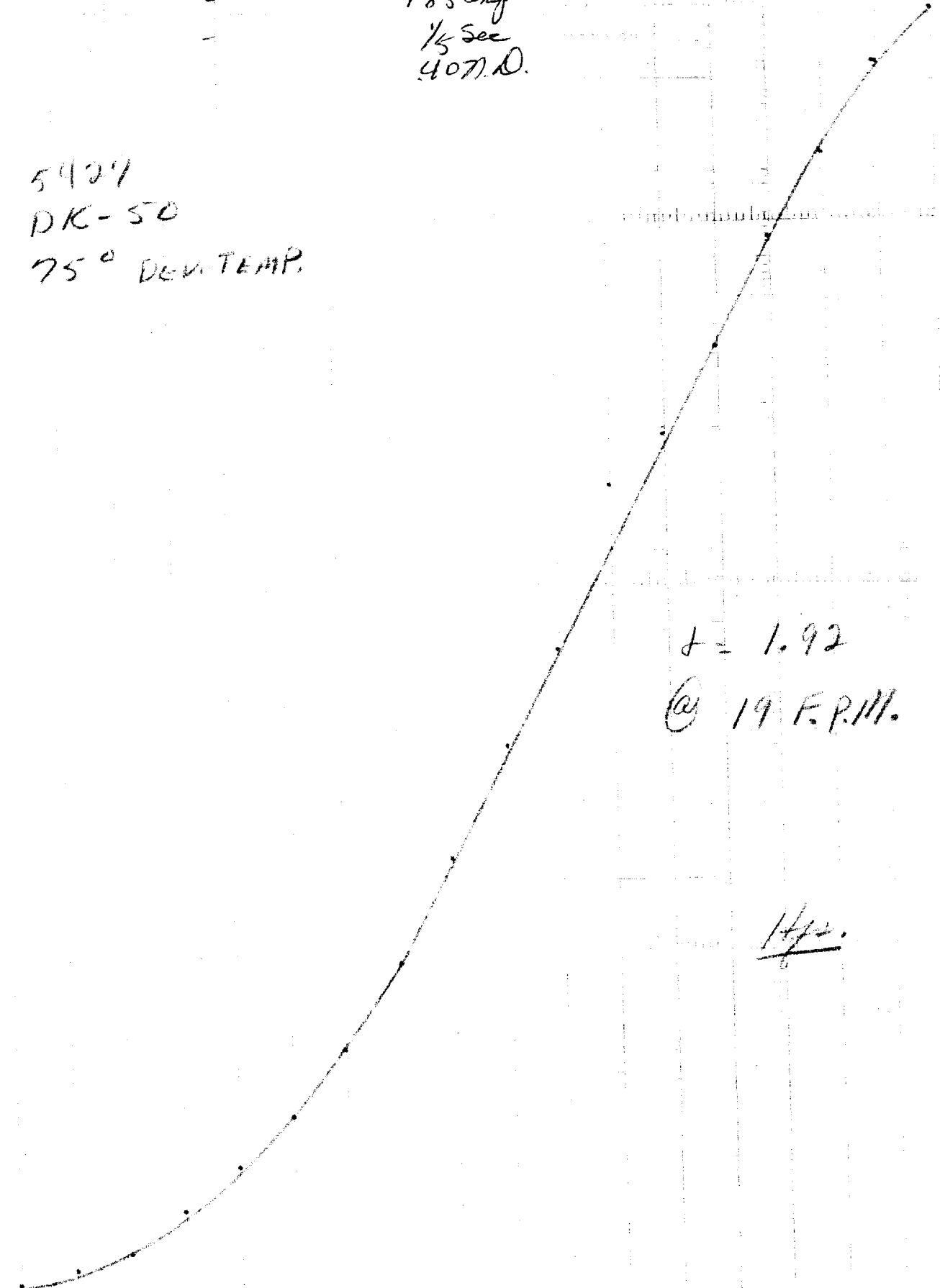
1/5 Sec

407.0.

5427

DK-50

75° DEV. TEMP.



$f = 1.92$

@ 19 F.P.M.

Hyp.

19 FPM DK-50

3427

75° D.T.

	Strip # 1	Strip # 2	Strip # 3	Strip # 4	Strip # 5
1	3.56	3.62	3.55	3.58	
2	3.41	3.45	3.40	3.43	
3	3.20	3.22	3.15	3.19	
4	3.02	3.02	2.92	2.96	
5	2.72	2.64	2.62	2.66	
6	2.40	2.42	2.41	2.42	
7	2.30	2.28	2.32	2.28	
8	1.82	1.85	1.80	1.83	
9	1.56	1.58	1.56	1.57	
10	1.28	1.26	1.24	1.26	
11	.98	.98	.97	.98	
12	.74	.74	.73	.74	
13	.56	.57	.56	.56	
14	.42	.42	.42	.42	
15	.30	.31	.30	.30	
16	.18	.19	.20	.19	
17	.14	.15	.13	.14	
18	.10	.11	.10	.10	
19					
20					
21					
22					
23					
24					
25					
26					
27					
28					
29					
30					