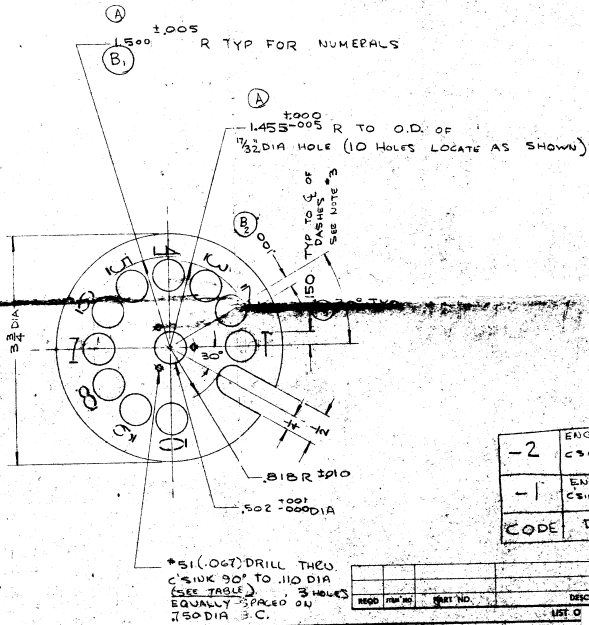


- NOTES!**
- NUMERALS SHALL BE STENCIL TYPE (.200" HIGH X APPROX .100" WIDE) SIMILAR TO GORTON TYPE #87-1
  - CUTTER TO HAVE A 45° POINT AND SHALL PENETRATE THRU THE 1/32" THICK STOCK TO GIVE NUMERALS A LINE THICKNESS OF .020"
  - DASHES TO BE .020" WIDE (45° TAPER) AND .060" LONG (CENTRALIZE UNDER NUMERAL)
  - ALL NUMERALS AND DASHES TO HAVE A CLEAN BURR-FREE OUTLINE.
  - SEE TABLE FOR PROPER ENGRAVING INFORMATION

REVISIONS				
ZONE	SYM	DESCRIPTION	DATE	BY
A		DATE 1 WAS 1477. DATE 2 WAS 1477. ADD .030 WIDE DATE 2 WAS 1477. DATE 3 WAS 1477. DATE 4 WAS 1477. DATE 5 WAS 1477. DATE 6 WAS 1477. DATE 7 WAS 1477. DATE 8 WAS 1477. DATE 9 WAS 1477. DATE 10 WAS 1477. DATE 11 WAS 1477. DATE 12 WAS 1477. DATE 13 WAS 1477. DATE 14 WAS 1477. DATE 15 WAS 1477. DATE 16 WAS 1477. DATE 17 WAS 1477. DATE 18 WAS 1477. DATE 19 WAS 1477. DATE 20 WAS 1477. DATE 21 WAS 1477. DATE 22 WAS 1477. DATE 23 WAS 1477. DATE 24 WAS 1477. DATE 25 WAS 1477. DATE 26 WAS 1477. DATE 27 WAS 1477. DATE 28 WAS 1477. DATE 29 WAS 1477. DATE 30 WAS 1477. DATE 31 WAS 1477. DATE 32 WAS 1477. DATE 33 WAS 1477. DATE 34 WAS 1477. DATE 35 WAS 1477. DATE 36 WAS 1477. DATE 37 WAS 1477. DATE 38 WAS 1477. DATE 39 WAS 1477. DATE 40 WAS 1477. DATE 41 WAS 1477. DATE 42 WAS 1477. DATE 43 WAS 1477. DATE 44 WAS 1477. DATE 45 WAS 1477. DATE 46 WAS 1477. DATE 47 WAS 1477. DATE 48 WAS 1477. DATE 49 WAS 1477. DATE 50 WAS 1477. DATE 51 WAS 1477. DATE 52 WAS 1477. DATE 53 WAS 1477. DATE 54 WAS 1477. DATE 55 WAS 1477. DATE 56 WAS 1477. DATE 57 WAS 1477. DATE 58 WAS 1477. DATE 59 WAS 1477. DATE 60 WAS 1477. DATE 61 WAS 1477. DATE 62 WAS 1477. DATE 63 WAS 1477. DATE 64 WAS 1477. DATE 65 WAS 1477. DATE 66 WAS 1477. DATE 67 WAS 1477. DATE 68 WAS 1477. DATE 69 WAS 1477. DATE 70 WAS 1477. DATE 71 WAS 1477. DATE 72 WAS 1477. DATE 73 WAS 1477. DATE 74 WAS 1477. DATE 75 WAS 1477. DATE 76 WAS 1477. DATE 77 WAS 1477. DATE 78 WAS 1477. DATE 79 WAS 1477. DATE 80 WAS 1477. DATE 81 WAS 1477. DATE 82 WAS 1477. DATE 83 WAS 1477. DATE 84 WAS 1477. DATE 85 WAS 1477. DATE 86 WAS 1477. DATE 87 WAS 1477. DATE 88 WAS 1477. DATE 89 WAS 1477. DATE 90 WAS 1477. DATE 91 WAS 1477. DATE 92 WAS 1477. DATE 93 WAS 1477. DATE 94 WAS 1477. DATE 95 WAS 1477. DATE 96 WAS 1477. DATE 97 WAS 1477. DATE 98 WAS 1477. DATE 99 WAS 1477. DATE 100 WAS 1477.	12 MAR 64	H.A.
B		1.500 WAS 1.477		
		1.600 WAS .172		
		.150 WAS .187		
		DATE 1 WAS 1477. DATE 2 WAS 1477.		



601560-1  
SHEET OF 1

-2	ENGRAVE FLEM OPPOSITE SIDE
-1	ENGRAVE FROM THIS SIDE
CODE	DESCRIPTION

REGD. FIRM NO.	UNIT NO.	DESCRIPTION	GOVERNMENT NO.	COMP. ON SPEC.

UNLESS OTHERWISE SPECIFIED		DIMENSIONS ARE IN INCHES		FRACTIONS OR DECIMALS		ANGLES	
DO NOT SCALE THIS DRAWING							
MATERIAL: ALUMINUM ALLOY				SPEC: 3024-T3			
FINISH: BRASS ASSIZE				SPEC: 152			
PROCESS: MACHINING				SPEC: 152			

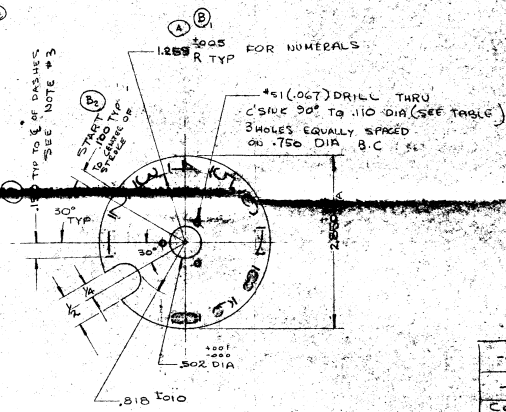
DRAWN: H.A.				DATE: 12 MAR 64			
CHECKED: H.A.				SCALE: 1:1			
APPROVED: H.A.				UNIT WT: 0.1918			
PART NO: 601560-1				REV: 2			
SHEET: 1				OF: 1			

REMOVE ALL BURS AND SHARP EDGES

APPLICATION	QTY	USED ON

- NOTES:
- NUMERALS SHALL BE STENCIL TYPE SIMILAR TO GORTON TYPE #87-1 (208 HIGH X APPROX .100" WIDE)
  - CUTTER TO HAVE A 45° POINT AND SHALL PENETRATE THRU THE 1/32 THICK STOCK TO GIVE NUMERALS A LINE THICKNESS OF .020"
  - DASHES TO BE .020" WIDE (45° TAPER) AND .005" HIGH (CENTRALIZE UNDER NUMERAL)
  - ALL DASHES AND NUMERALS TO HAVE A CLEAN BURR-FREE OUTLINE
  - SEE TABLE FOR PROPER ENGRAVING INFORMATION

REV	DATE	DESCRIPTION	BY	APP
A	12/14/59	ENGR. WAS 1.25" (MTC) THE NUMERALS WERE CUTTER WAS OBSOLETE NUMERALS WERE REWORKED (SEE #3)	HA	
B	12/14/59	1.25" STAMP WAS 1.25" STAMP AND THE STAMP WAS FTE TWO .50" DIA WAS 1.07" DIA .50" DIA WAS 1.07" DIA	HA	



601559  
SHEET 1 OF 1

-2	ENGRAVE FROM THIS SIDE
-1	ENGRAVE FROM OPPOSITE SIDE
000	DESCRIPTION

PROD. ITEM NO.	PART NO.	DESCRIPTION	GOVERNMENT NO.	CODE OF SPEC.

UNLESS OTHERWISE SPECIFIED	
DIMENSIONS ARE IN INCHES	
FRACTIONS ON DECIMALS ANGLES	
DO NOT SCALE THIS DRAWING	
MATERIAL	ALLOY
SPEC	FINISH
BEFORE ANODIZING	AFTER MACHINING

QTY	USED ON	APPLICATION
1	552	
1	552	

DRAWN	BY	DATE	DATE	NO.	SIZE	DWG NO.	REV
HA	HA	12/14/59		01973	C	601559-1	B

MASK

REMOVE ALL BURS AND SHARP EDGES