

RECEIVED  
August 9, 1968  
AUG 19 3 13 PM '68  
DEVELOPMENT STAFF  
105

Attention: Mr. Ed D.  
Subject: Control #02228

Dear Sir:

STAT STAT  
In response to your request in a meeting at the   
 on 1 August we are submitting a list of the instrument controls  
we presently expect to employ on the console for the twin stage comparator  
furnished under control number 02228.

1. One joystick to control direction of stage motions
2. One knob for selecting ratio of motor speeds between the two stage motions
3. Three push switches for selecting left, right, or simultaneous stage motion in response to actuation of the joystick control. A three position rocker switch may finally be substituted to replace these three push switches, as suggested at the meeting of 1 August 1968.
4. Eight indicator lamps to provide visual indication that a stage motion has reached its safe limit of travel and stopped. It is intended that the eight indicator lamps be arranged on the console to form two crosses, located side by side. The cross to the left will be associated with the left hand stage motions. The vertical leg of each cross will represent extreme Y axis stage motions. That for the X axis will be represented by the horizontal leg of each cross.

Whenever a stage motion reaches its safe limit of travel an electric limit switch is activated. This action simultaneously de-energizes the motor circuit to prevent damage to the comparator, and illuminates the indicator lamp associated with the extreme end of travel for this stage motion.

5. Two knobs to position the rheostats employed to set the level of illumination for each leg of the viewing system.
6. One toggle switch to control the substage illumination lamps located beneath the X and Y axis stages.

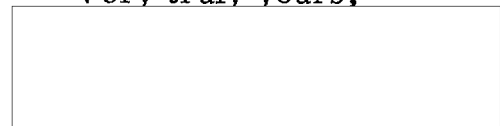
Mr. E.D.

August 9, 1968

Information pertaining to the physical size and weight of the joystick control assembly has not been included in this letter because our present model may not be suitable for use with the motor drive units which will be designed for use on the twin stage comparator. This information can, however, be submitted when the final joystick design is completed.

A scale drawing of the twin stage comparator and instrument console will be started the week of 11 August 1968. A print of this drawing will be forwarded as soon as it is completed.

Very truly yours,

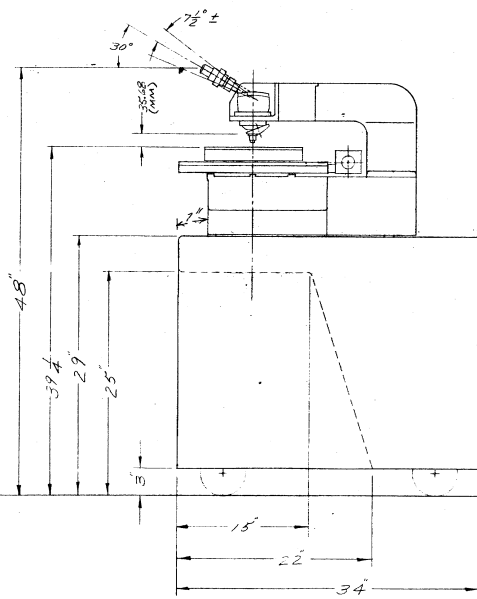
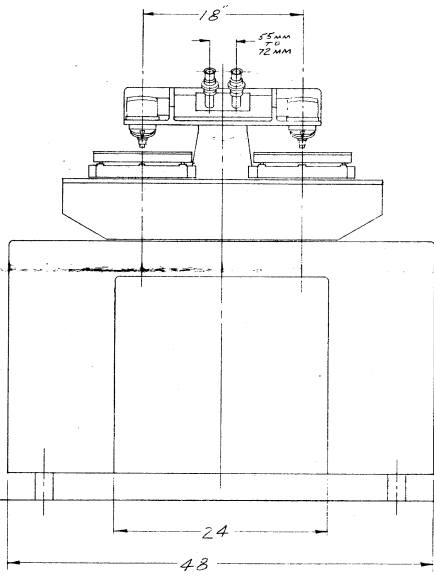
A rectangular box with a thin black border, used to redact the signature of the sender.

Assistant Manager  
Engineering

STAT

HBB/ed

SYM.	WKS.	BY	DATE
------	------	----	------



REV. 13  
 13 OCT 1978  
 DESIGNED BY  
 DRAWN BY

UNLESS OTHERWISE SPECIFIED		DR. <i>B.M.</i>	TITLE 6 IN. X 6 IN STEREO COMPARATOR PRELIMINARY OVERALL PHYSICAL CONSIDERATIONS
DIMENSIONS ARE IN INCHES		CHK.	
TOLERANCES ON FRAC. ±		APP.	
DEC. ±		QTY. UNIT	
MACHINE FINISH		PATTERN NO.	
MATERIAL		SCALE 1/2" = 1"	DWG. NO. # 1740-P1
FINISH		DO NOT SCALE PRINT	
APPLICATION	QTY.	REMOVE ALL BURRS & SHARP EDGES MAX. FLAT .008	